



**TRILOBITE TESTING, INC.**

# DRILL STEM TEST REPORT

Shakespeare Oil Company, Inc.

**28-16s-34w Scott Co, KS**

202 W Main ST  
Salem IL, 62881-1519

**Blakey 1-28**

Job Ticket: 61591

**DST#: 1**

ATTN: Tim Priest

Test Start: 2015.07.27 @ 10:02:00

## GENERAL INFORMATION:

Formation: **Kansas City 'I'**

Deviated: No Whipstock: ft (KB)

Time Tool Opened: 14:06:30

Time Test Ended: 18:06:30

Test Type: Conventional Bottom Hole (Initial)

Tester: Jace McKinney

Unit No: 75

**Interval: 4276.00 ft (KB) To 4300.00 ft (KB) (TVD)**

Reference Elevations: 3150.00 ft (KB)

Total Depth: 4300.00 ft (KB) (TVD)

3143.00 ft (CF)

Hole Diameter: 7.88 inches Hole Condition: Poor

KB to GR/CF: 7.00 ft

**Serial #: 8675**

**Inside**

Press @ Run Depth: 19.90 psig @ 4277.00 ft (KB)

Capacity: 8000.00 psig

Start Date: 2015.07.27 End Date: 2015.07.27

Last Calib.: 2015.07.27

Start Time: 10:02:15 End Time: 18:06:30

Time On Btm: 2015.07.27 @ 14:06:15

Time Off Btm: 2015.07.27 @ 16:37:00

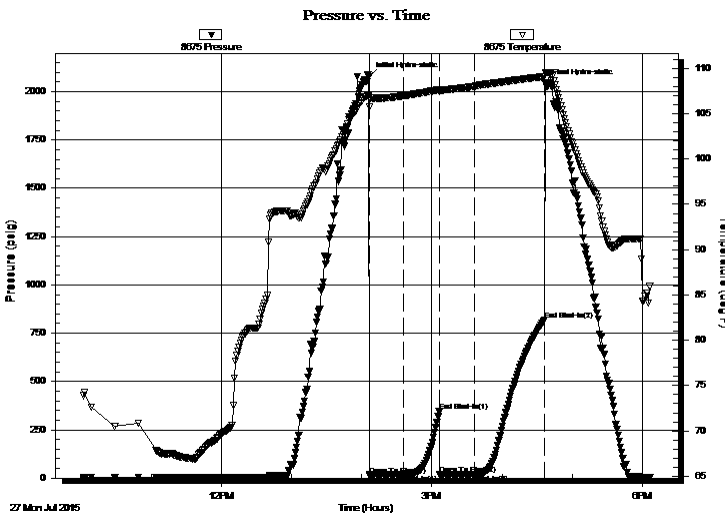
**TEST COMMENT:** Weak surface, died in 15 min.

No return blow

No blow

No return blow

## PRESSURE SUMMARY



Time (Min.)	Pressure (psig)	Temp (deg F)	Annotation
0	2078.88	107.11	Initial Hydro-static
1	16.19	105.72	Open To Flow (1)
30	20.29	106.96	Shut-In(1)
60	343.97	107.63	End Shut-In(1)
61	18.44	107.48	Open To Flow (2)
90	19.90	108.00	Shut-In(2)
150	818.66	109.09	End Shut-In(2)
151	2041.66	109.49	Final Hydro-static

## Recovery

Length (ft)	Description	Volume (bbl)
5.00	100% Mud	0.02

## Gas Rates

Choke (inches)	Pressure (psig)	Gas Rate (Mcf/d)



**TRILOBITE  
TESTING, INC.**

# DRILL STEM TEST REPORT

**FLUID SUMMARY**

Shakespeare Oil Company, Inc.

**28-16s-34w Scott Co, KS**

202 W Main ST  
Salem IL, 62881-1519

**Blakey 1-28**

Job Ticket: 61591

**DST#: 1**

ATTN: Tim Priest

Test Start: 2015.07.27 @ 10:02:00

## Mud and Cushion Information

Mud Type: Gel Chem

Cushion Type:

Oil API:

deg API

Mud Weight: 9.00 lb/gal

Cushion Length:

ft

Water Salinity:

ppm

Viscosity: 52.00 sec/qt

Cushion Volume:

bbf

Water Loss: 7.20 in<sup>3</sup>

Gas Cushion Type:

Resistivity: ohm.m

Gas Cushion Pressure:

psig

Salinity: 5000.00 ppm

Filter Cake: 1.00 inches

## Recovery Information

Recovery Table

Length ft	Description	Volume bbf
5.00	100% Mud	0.025

Total Length: 5.00 ft      Total Volume: 0.025 bbf

Num Fluid Samples: 0

Num Gas Bombs: 0

Serial #:

Laboratory Name:

Laboratory Location:

Recovery Comments:

