

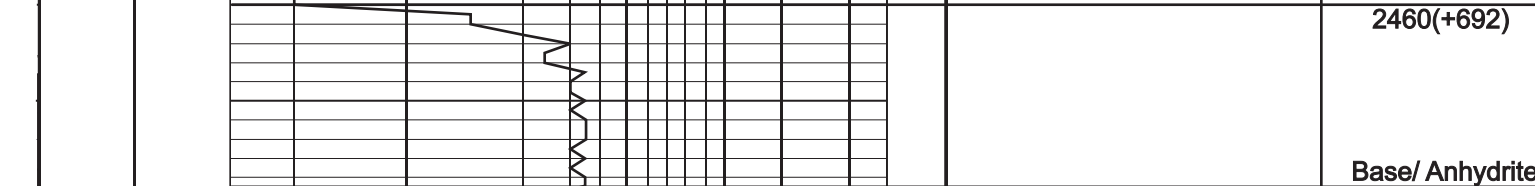
**GEOLOGIST'S REPORT**  
**DRILLING TIME AND SAMPLE LOG**

COMPANY **SHAKESPEAR OIL CO.** ELEVATIONS **KG 3152'**  
 LEASE **Blakey 1-28** DF **\_\_\_\_\_**  
 FIELD **Wildcat** SEC **\_\_\_\_\_** GL **3143'**  
 LOCATION **2190' FSL, 350' FWL** COUNTY **Scott** STATE **Kansas**  
 CONTRACTOR **HD Rig #3** From **KB**  
 SPUD **7-21-15** COMP **8-1-15** CASING **N/A**  
 RTD **4910'** LTD **4908'** CONDUCTION **N/A**  
 MUD UP **3600'** TYPE MUD **Chemical** SURFACE **8-5/8" @ 25'**  
 SAMPLES SAVED FROM **3800'** to RTD PRODUCTION **None**  
 DRILLING TIME KEPT FROM **3800'** to RTD ELECTRICAL SURVEYS **CND/D/SP/PE**  
 SAMPLES EXAMINED FROM **3800'** to RTD GEOLOGICAL SUPERVISION FROM **3900'** to RTD  
 GEOLOGIST ON WELL **Tim Priest** By: **Weatherford**

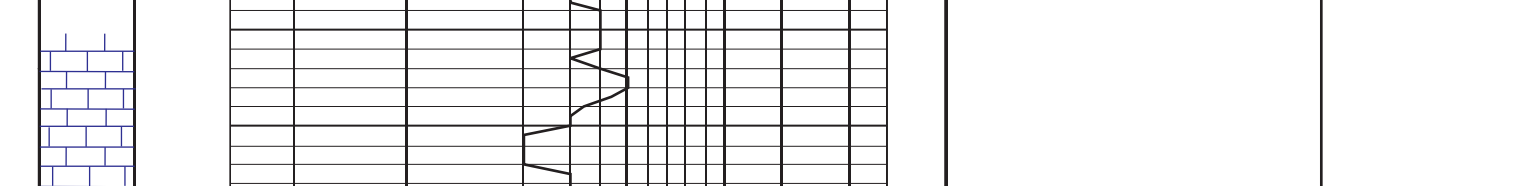
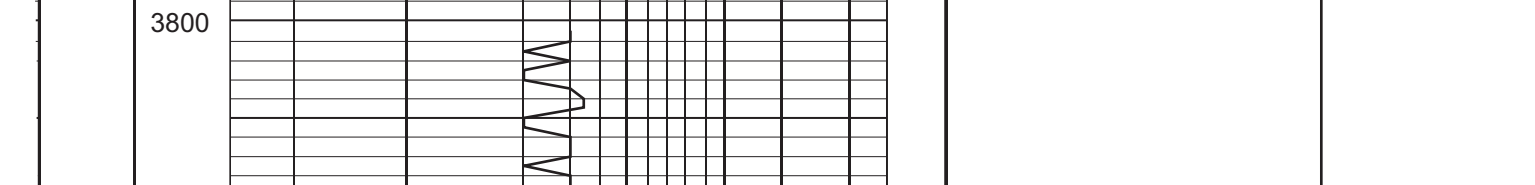
REMARKS **Due to the negative results of DSTs, it was decided to plug and abandon the well.**

Respectfully Submitted,  
 Tim Priest  
 Petroleum Geologist

API #15-171-21145-00-00



FORMATION TOPS	ELECTRIC LOG	SAMPLE
Anyvrite	2458 (+694)	2460 (+692)
Heebner Shale	4001 (-849)	4003 (-851)
Austinrg	4046 (-894)	4047 (-895)
SBRK	4330 (-1178)	4333 (-1181)
B/K.C.	4422 (-1270)	4424 (-1272)
Fort Scott	4597 (-1445)	4599 (-1447)
Cherokee Shale	4624 (-1472)	4627 (-1475)
Mississippian	4835 (-1683)	4836 (-1684)



DEPTH	SAMPLE DESCRIPTION	REMARKS
2450		Anhydrite 2460(+692)
2450-2479		Base/ Anhydrite 2479(+673)
2479-2500	Ls crm-tan, fn xtl, fos, chky, f-gd int xtl & int frag por, NS	
2500-2550	Sh gry	
2550-2600	Ls crm-tan, fn xtl, sil fos, chky, arg in prt	
2600-2650	Sh blk, carb	
2650-2700	SS lt gry, vfn gm, fiable, w/gry Sh	
2700-2750	Ls crm-tan-gry, fn xtl, fos, chky, p-f int xtl-pp por, NS	
2750-2800	Ls crm-tan, fn xtl, sil fos, chky, arg in prt	
2800-2850	Sh gry-blk	
2850-2900	Ls crm-tan, fn xtl, fos, chky, f-gd int xtl-pp por, NS	
2900-2950	Ls crm-t gry, vfn xtl, sil chty, dnse	
2950-3000	Ls crm-t gry, fn xtl, fos, chky, f int xtl por, NS	
3000-3050	Ls crm-t gry, fn xtl, dnse	
3050-3100	Sh blk, carb	Heebner 4003 (-851)
3100-3150	Sh gry-dk gry, calc	Toronto 4016 (-866)
3150-3200	Ls crm-t gry, fn xtl, fos, chky, f int xtl-pp por, NS	
3200-3250	Ls crm, fn xtl, fos, v chky, p-f int xtl-pp por, NS	
3250-3300	Sh gm-gry	Lansing 4047 (-895)
3300-3350	Ls crm-t gry, fos, chky, p-f int xtl por, NS	
3350-3400	Ls crm, fn xtl, ool, v chky, p-f int xtl & int ool por, NS	
3400-3450	Sh red-gry	
3450-3500	Ls crm-t gry, ool, vfn xtl, dnse	
3500-3550	Ls crm-t gry, dolo, fn xtl, p-f int xtl por, NS	
3550-3600	Ls crm-t gry, fn xtl, sil chty, dnse	
3600-3650	Ls crm-t gry, dolo, fn xtl, p-f int xtl por, NS	
3650-3700	Sh blk, carb	
3700-3750	Ls crm-tan, fn xtl, sil fos, p-f int xtl-pp por, sptd-sil sat stn, SSFO, f odor, dull-f fluor	
3750-3800	Sh gm-gry	
3800-3850	Ls/Dol crm, fn xtl, chky, f-gd int xtl por, NS	
3850-3900	Ls crm-t gry, fos, chky, dnse	
3900-3950	Sh gry-dk gry	
3950-4000	Ls crm-t gry, fn xtl, fos, sil chky, f int xtl-pp por w/scat vugs, NS	
4000-4050	Ls crm-t gry, fn xtl, fos-ool, chky, p-f int xtl & ooc por, NS	
4050-4100	Ls crm-t gry, vfn xtl, sil chty, dnse	
4100-4150	Ls crm-t gry, fn xtl, fos, chky, p int xtl-pp por, NS	
4150-4200	Ls crm-t gry, vfn xtl, chty, dnse	Muncie Creek 4232 (-1080)
4200-4250	Sh blk, carb	
4250-4300	Ls crm-t gry, vfn xtl, chty, dnse	
4300-4350	Ls crm-t gry, vfn xtl, chty, dnse	
4350-4400	Sh blk, carb	DST # 1 (4276'-4300') FF: Died in 15', no return FF: No blow, no return Rec: 5' OSM Fps: 16-20/19-20# SIPs: 344/819# HSPs: 2079/2042# BHT: 109 deg F
4400-4450	Ls crm-tan, fn xtl, fos, chky, p-f int xtl-pp por w/few vugs, sptd-sil sat stn, SSFO, f odor, dull-f fluor	DST # 2 (4206'-4320') FF: 8' OOB 5', no return FF: No blow, no return Rec: 219' MW viscum of oil (50% M.S.P.W), 252' MW (20% M.S.P.W), 438' W/ Total fluid: 910' Fps: 16-20/19-20# SIPs: 1214/1211# HSPs: 2258/2164# BHT: 110 deg F
4450-4500	Sh gm-gry	
4500-4550	Ls/Dol crm, fn xtl, chky, f-gd int xtl por, NS	
4550-4600	Ls crm-t gry, fos, chky, dnse	
4600-4650	Sh gry-dk gry	
4650-4700	Ls crm-t gry, fn xtl, fos, sil chky, f int xtl-pp por w/scat vugs, NS	
4700-4750	Ls crm-t gry, fn xtl, fos-ool, chky, p-f int xtl & ooc por, NS	
4750-4800	Ls crm-t gry, vfn xtl, sil chty, dnse	
4800-4850	Ls crm-t gry, fn xtl, fos, chky, p int xtl-pp por, NS	
4850-4900	Ls crm-t gry, vfn xtl, chty, dnse	Marmaton 4476 (-1324)
4900-4950	Sh blk, carb	DST # 3 (4473'-4508') FF: Died in 12', no return FF: No blow, no return Rec: 5' OSM Fps: 19-20/19-20# SIPs: 298/429# HSPs: 2258/2164# BHT: 110 deg F
4950-5000	Ls crm-tan, fn xtl, sil fos, sil chky, p-f int xtl-pp por, sptd-sil sat stn, SSFO, f odor, dull fluor	DST # 4 (4515'-4550') FF: Died in 20', no return FF: No blow, no return Rec: 5' OSM Fps: 18-10/19-20# SIPs: 268/279# HSPs: 2258/2156# BHT: 111 deg F
5000-5050	Ls crm-t gry, vfn xtl, sil chky, dnse	
5050-5100	Sh blk, carb	Pawnee 4549 (-1397)
5100-5150	Ls lt gry-gry, vfn xtl, arg in prt	
5150-5200	Ls crm-tan, vfn xtl, sil chty, dnse	
5200-5250	Ls crm-tan, vfn xtl, sil chty, dnse	
5250-5300	Sh blk, carb	
5300-5350	Ls lt gry-gry, vfn xtl, arg in prt	Myric Station 4584 (-1432)
5350-5400	Sh blk, carb	
5400-5450	Ls tan-gry mtd, fn xtl, ool, dnse	F599 (-1447)
5450-5500	Sh gm-gry-dk gry	
5500-5550	Ls crm-gry, fn xtl, fos, sil chty, mostly dnse	
5550-5600	Sh blk, carb	Cherokee Shale 4627 (-1475)
5600-5650	Ls crm-tan-gry mtd, fn xtl, fos, chky, f int frag por, NS	
5650-5700	Sh gm-gry	
5700-5750	Ls crm-t gry, fn xtl, p-f int xtl por, NS	
5750-5800	Ls tan-gry, vfn xtl, w/int bed blk carb Sh	
5800-5850	Sh gm-gry	Johnson Zone 4671 (-1519)
5850-5900	Ls crm-t gry, vfn xtl, dnse	
5900-5950	Sh gry-dk gry	
5950-6000	Ls crm-gry, vfn xtl, sil fos, sil chty, dnse	
6000-6050	Sh blk	
6050-6100	Ls crm-gry, vfn xtl, sil fos, sil chty, dnse	
6100-6150	Ls crm-t gry, fn-vfn xtl, sil fos, p int xtl-pp por, sptd-sil sat stn, SSFO, sil odor, no fluor	
6150-6200	Ls crm-tan-gry, vfn xtl, sil chky, dnse	
6200-6250	Ls crm-t gry, fn-vfn xtl, sil fos, quartz, p-f int xtl-pp por, sptd-sil sat stn on few pcs, SSFO, vsil odor, no fluor	
6250-6300	Sh gry-dk gry	
6300-6350	SS crm-t gry, fn gm, sil fria, NS	
6350-6400	Sh var col	
6400-6450	SS lt gry, fn-med gm, sil fria, NS	
6450-6500	Sh var col	
6500-6550	Sh var col	
6550-6600	SS clear-lt gry, fn-med gm, sil fria, NS	
6600-6650	SS clear-lt gry, fn-med gm, sil fria, NS	Mississippian 4836 (-1684)
6650-6700	Ls crm-t gry, sandy, sil chky, dnse	
6700-6750	Ls crm-tan, vfn xtl, sil sandy, dnse	
6750-6800	Ls crm-tan, vfn xtl, sil sandy, dnse	
6800-6850	Ls crm-t gry, vfn xtl, dnse	
6850-6900	Ls crm-tan, vfn xtl, sil sandy, dnse	
6900-6950	Ls crm-t gry, vfn xtl, dnse	Total Depth 4910' (-1758)