



**TRILOBITE  
TESTING, INC**

# DRILL STEM TEST REPORT

Herman L. Loeb LLC.  
P.O. Box 838  
Lawrenceville, IL 62439  
ATTN: Jon Christensen

**21-27s-18w**  
**BANTA "F" 1-21**  
Job Ticket: 57876 **DST#: 1**  
Test Start: 2015.06.10 @ 03:32:54

## GENERAL INFORMATION:

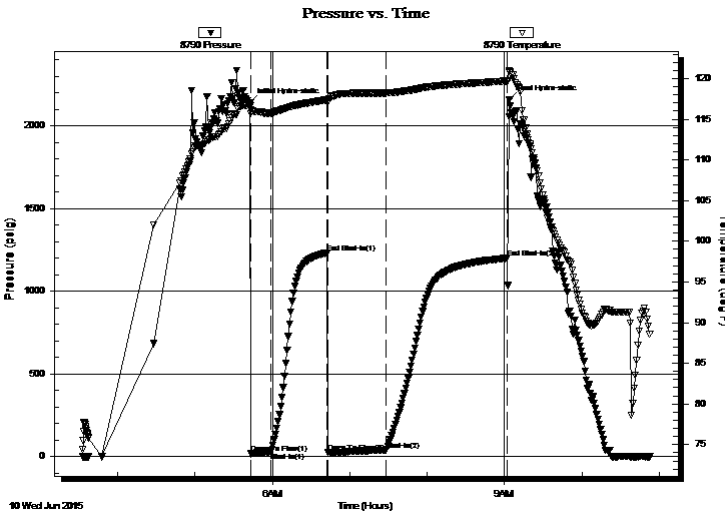
Formation: **KC "I"**  
Deviated: No Whipstock: 0.00 ft (KB)  
Time Tool Opened: 05:43:09  
Time Test Ended: 10:53:09  
Interval: **4414.00 ft (KB) To 4431.00 ft (KB) (TVD)**  
Total Depth: 4431.00 ft (KB) (TVD)  
Hole Diameter: 7.88 inches Hole Condition: Fair  
Test Type: Conventional Bottom Hole (Initial)  
Tester: Ryan Reynolds  
Unit No: 68  
Reference Elevations: 2224.00 ft (KB)  
2211.00 ft (CF)  
KB to GR/CF: 13.00 ft

## Serial #: 8790

Press@RunDepth: 38.68 psig @ 4420.00 ft (KB) Capacity: 8000.00 psig  
Start Date: 2015.06.10 End Date: 2015.06.10 Last Calib.: 2015.06.10  
Start Time: 03:32:59 End Time: 10:53:08 Time On Btm: 2015.06.10 @ 05:42:54  
Time Off Btm: 2015.06.10 @ 09:03:54

TEST COMMENT: IF: Good blow . surf. - 11"  
IS: No blow .  
FF: Strong blow . BOB immed. No GTS.  
FS: No blow .

## PRESSURE SUMMARY



Time (Min.)	Pressure (psig)	Temp (deg F)	Annotation
0	2142.42	116.67	Initial Hydro-static
1	16.66	115.73	Open To Flow (1)
16	26.52	115.71	Shut-In(1)
60	1231.52	117.38	End Shut-In(1)
61	22.76	117.08	Open To Flow (2)
106	38.68	118.21	Shut-In(2)
200	1199.71	119.71	End Shut-In(2)
201	2159.31	120.86	Final Hydro-static

## Recovery

Length (ft)	Description	Volume (bbl)
60.00	GWOCM 33%g, 17%w, 20%o, 30%m	0.30
45.00	GOWCM 22%g, 10%o, 17%w, 51%m	0.63
0.00	1685' GIP	0.00

## Gas Rates

	Choke (inches)	Pressure (psig)	Gas Rate (Mcf/d)



**TRILOBITE  
TESTING, INC**

# DRILL STEM TEST REPORT

## FLUID SUMMARY

Herman L. Loeb LLC.

**21-27s-18w**

P.O. Box 838  
Lawrenceville, IL 62439

**BANTA "F" 1-21**

Job Ticket: 57876

**DST#: 1**

ATTN: Jon Christensen

Test Start: 2015.06.10 @ 03:32:54

### Mud and Cushion Information

Mud Type: Gel Chem

Cushion Type:

Oil API:

deg API

Mud Weight: 10.00 lb/gal

Cushion Length:

ft

Water Salinity:

42000 ppm

Viscosity: 67.00 sec/qt

Cushion Volume:

bbbl

Water Loss: 9.19 in<sup>3</sup>

Gas Cushion Type:

Resistivity: ohm.m

Gas Cushion Pressure:

psig

Salinity: 8000.00 ppm

Filter Cake: 0.08 inches

### Recovery Information

Recovery Table

Length ft	Description	Volume bbl
60.00	GWOcm 33%g, 17%w, 20%o, 30%m	0.304
45.00	GOWcm 22%g, 10%o, 17%w, 51%m	0.631
0.00	1685' GIP	0.000

Total Length: 105.00 ft

Total Volume: 0.935 bbl

Num Fluid Samples: 0

Num Gas Bombs: 0

Serial #: none

Laboratory Name:

Laboratory Location:

Recovery Comments:

