



## DRILL STEM TEST REPORT

Prepared For: **StrataKan Expl. LLC**

204 W. Mill  
Plainville KS 67663

ATTN: Chris Bean

**BNE #19-22**

**19-17s-9w Ellsworth,KS**

Start Date: 2015.05.24 @ 14:05:58

End Date: 2015.05.24 @ 19:04:13

Job Ticket #: 59777                      DST #: 1

Trilobite Testing, Inc  
1515 Commerce Parkway Hays, KS 67601  
ph: 785-625-4778 fax: 785-625-5620

Printed: 2015.05.28 @ 13:35:54



**TRILOBITE TESTING, INC**

# DRILL STEM TEST REPORT

StrataKan Expl. LLC  
 204 W. Mill  
 Plainville KS 67663  
 ATTN: Chris Bean

**19-17s-9w Ellsworth, KS**  
**BNE #19-22**  
 Job Ticket: 59777 **DST#: 1**  
 Test Start: 2015.05.24 @ 14:05:58

## GENERAL INFORMATION:

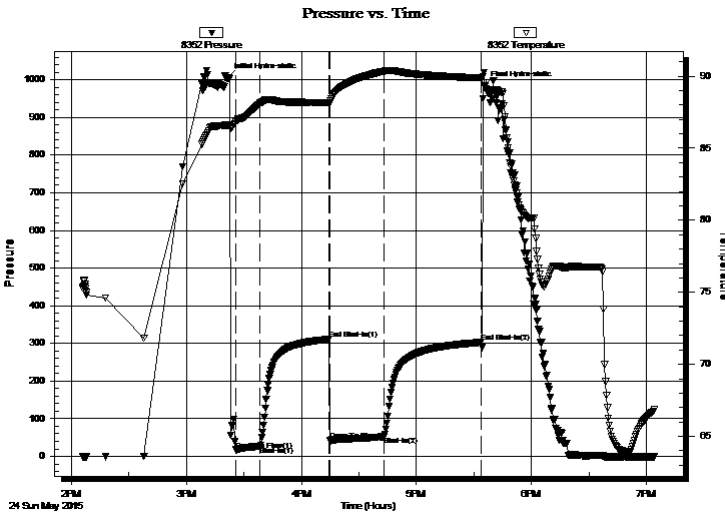
Formation: **Grand Haven**  
 Deviated: No Whipstock: ft (KB)  
 Time Tool Opened: 15:25:43  
 Time Test Ended: 19:04:13  
 Interval: **2124.00 ft (KB) To 2150.00 ft (KB) (TVD)**  
 Total Depth: 2150.00 ft (KB) (TVD)  
 Hole Diameter: 7.88 inches Hole Condition: Fair  
 Test Type: Conventional Bottom Hole (Initial)  
 Tester: Gary Pevoteaux  
 Unit No: 80  
 Reference Elevations: 1788.00 ft (KB)  
 1778.00 ft (CF)  
 KB to GR/CF: 10.00 ft

## Serial #: 8352 Outside

Press@RunDepth: 52.30 psig @ 2125.00 ft (KB) Capacity: 8000.00 psig  
 Start Date: 2015.05.24 End Date: 2015.05.24 Last Calib.: 2015.05.24  
 Start Time: 14:06:03 End Time: 19:04:12 Time On Btm: 2015.05.24 @ 15:21:28  
 Time Off Btm: 2015.05.24 @ 17:35:28

TEST COMMENT: IF:Strong blow . B.O.B. in 2 1/2 mins.  
 IS:No blow .  
 FF:Strong blow . B.O.B. in 6 mins.  
 FS:No blow .

## PRESSURE SUMMARY



Time (Min.)	Pressure (psig)	Temp (deg F)	Annotation
0	1004.71	86.56	Initial Hydro-static
5	17.33	86.82	Open To Flow (1)
17	27.17	88.13	Shut-In(1)
53	311.05	88.19	End Shut-In(1)
54	42.03	88.12	Open To Flow (2)
82	52.30	90.35	Shut-In(2)
133	303.09	89.89	End Shut-In(2)
134	983.32	89.37	Final Hydro-static

## Recovery

Length (ft)	Description	Volume (bbl)
0.00	378 ft.of GIP	0.00
20.00	Drig.mud	0.28
62.00	SW	0.87

## Gas Rates

	Choke (inches)	Pressure (psig)	Gas Rate (Mcf/d)



# DRILL STEM TEST REPORT

StrataKan Expl. LLC  
 204 W. Mill  
 Plainville KS 67663  
 ATTN: Chris Bean

**19-17s-9w Ellsworth, KS**

**BNE #19-22**

Job Ticket: 59777 **DST#: 1**  
 Test Start: 2015.05.24 @ 14:05:58

## GENERAL INFORMATION:

Formation: **Grand Haven**  
 Deviated: No Whipstock: ft (KB)  
 Test Type: Conventional Bottom Hole (Initial)  
 Time Tool Opened: 15:25:43 Tester: Gary Pevoteaux  
 Time Test Ended: 19:04:13 Unit No: 80  
 Interval: **2124.00 ft (KB) To 2150.00 ft (KB) (TVD)** Reference Elevations: 1788.00 ft (KB)  
 Total Depth: 2150.00 ft (KB) (TVD) 1778.00 ft (CF)  
 Hole Diameter: 7.88 inches Hole Condition: Fair KB to GR/CF: 10.00 ft

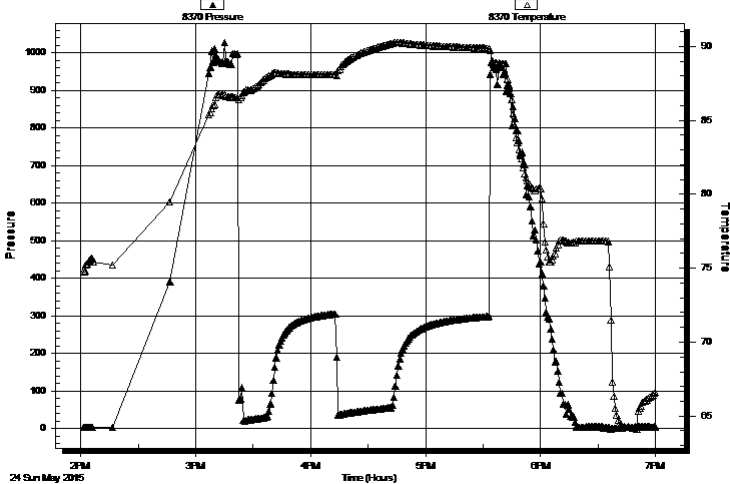
## Serial #: 8370

Inside

Press@RunDepth: psig @ 2125.00 ft (KB)	Capacity: 8000.00 psig
Start Date: 2015.05.24 End Date: 2015.05.24	Last Calib.: 2015.05.24
Start Time: 14:01:33 End Time: 19:00:27	Time On Btm: Time Off Btm:

TEST COMMENT: IF:Strong blow . B.O.B. in 2 1/2 mins.  
 IS:No blow .  
 FF:Strong blow . B.O.B. in 6 mins.  
 FS:No blow .

Pressure vs. Time



## PRESSURE SUMMARY

Time (Min.)	Pressure (psig)	Temp (deg F)	Annotation

## Recovery

Length (ft)	Description	Volume (bbl)
0.00	378 ft.of GIP	0.00
20.00	Drig.mud	0.28
62.00	SW	0.87

## Gas Rates

	Choke (inches)	Pressure (psig)	Gas Rate (Mcf/d)



**TRILOBITE  
TESTING, INC**

# DRILL STEM TEST REPORT

**TOOL DIAGRAM**

StrataKan Expl. LLC

**19-17s-9w Ellsworth,KS**

204 W. Mill  
Plainville KS 67663

**BNE #19-22**

Job Ticket: 59777

**DST#: 1**

ATTN: Chris Bean

Test Start: 2015.05.24 @ 14:05:58

## Tool Information

Drill Pipe:	Length: 2101.00 ft	Diameter: 3.80 inches	Volume: 29.47 bbl	Tool Weight: 2400.00 lb
Heavy Wt. Pipe:	Length: 0.00 ft	Diameter: 0.00 inches	Volume: 0.00 bbl	Weight set on Packer: 24000.00 lb
Drill Collar:	Length: 0.00 ft	Diameter: 0.00 inches	Volume: 0.00 bbl	Weight to Pull Loose: 44000.00 lb
			<u>Total Volume: 29.47 bbl</u>	Tool Chased 0.00 ft
Drill Pipe Above KB:	7.00 ft			String Weight: Initial 31000.00 lb
Depth to Top Packer:	2124.00 ft			Final 31000.00 lb
Depth to Bottom Packer:	ft			
Interval between Packers:	26.00 ft			
Tool Length:	56.00 ft			
Number of Packers:	2	Diameter: 6.75 inches		

Tool Comments:

Tool Description	Length (ft)	Serial No.	Position	Depth (ft)	Accum. Lengths
------------------	-------------	------------	----------	------------	----------------

Change Over Sub	1.00			2095.00	
Shut In Tool	5.00			2100.00	
Sampler	2.00			2102.00	
Hydraulic tool	5.00			2107.00	
Jars	5.00			2112.00	
Safety Joint	3.00			2115.00	
Packer	4.00			2119.00	30.00 Bottom Of Top Packer
Packer	5.00			2124.00	
Stubb	1.00			2125.00	
Recorder	0.00	8352	Outside	2125.00	
Recorder	0.00	8370	Inside	2125.00	
Perforations	20.00			2145.00	
Bullnose	5.00			2150.00	26.00 Bottom Packers & Anchor

**Total Tool Length: 56.00**



**TRILOBITE  
TESTING, INC**

# DRILL STEM TEST REPORT

## FLUID SUMMARY

StrataKan Expl. LLC

**19-17s-9w Ellsworth,KS**

204 W. Mill  
Plainville KS 67663

**BNE #19-22**

Job Ticket: 59777

**DST#: 1**

ATTN: Chris Bean

Test Start: 2015.05.24 @ 14:05:58

### Mud and Cushion Information

Mud Type: Gel Chem

Cushion Type:

Oil API:

deg API

Mud Weight: 9.00 lb/gal

Cushion Length:

ft

Water Salinity:

125000 ppm

Viscosity: 82.00 sec/qt

Cushion Volume:

bbbl

Water Loss: 6.37 in<sup>3</sup>

Gas Cushion Type:

Resistivity: 0.00 ohm.m

Gas Cushion Pressure:

psig

Salinity: 800.00 ppm

Filter Cake: 0.20 inches

### Recovery Information

Recovery Table

Length ft	Description	Volume bbbl
0.00	378 ft.of GIP	0.000
20.00	Drig.mud	0.281
62.00	SW	0.870

Total Length: 82.00 ft      Total Volume: 1.151 bbl

Num Fluid Samples: 0

Num Gas Bombs: 0

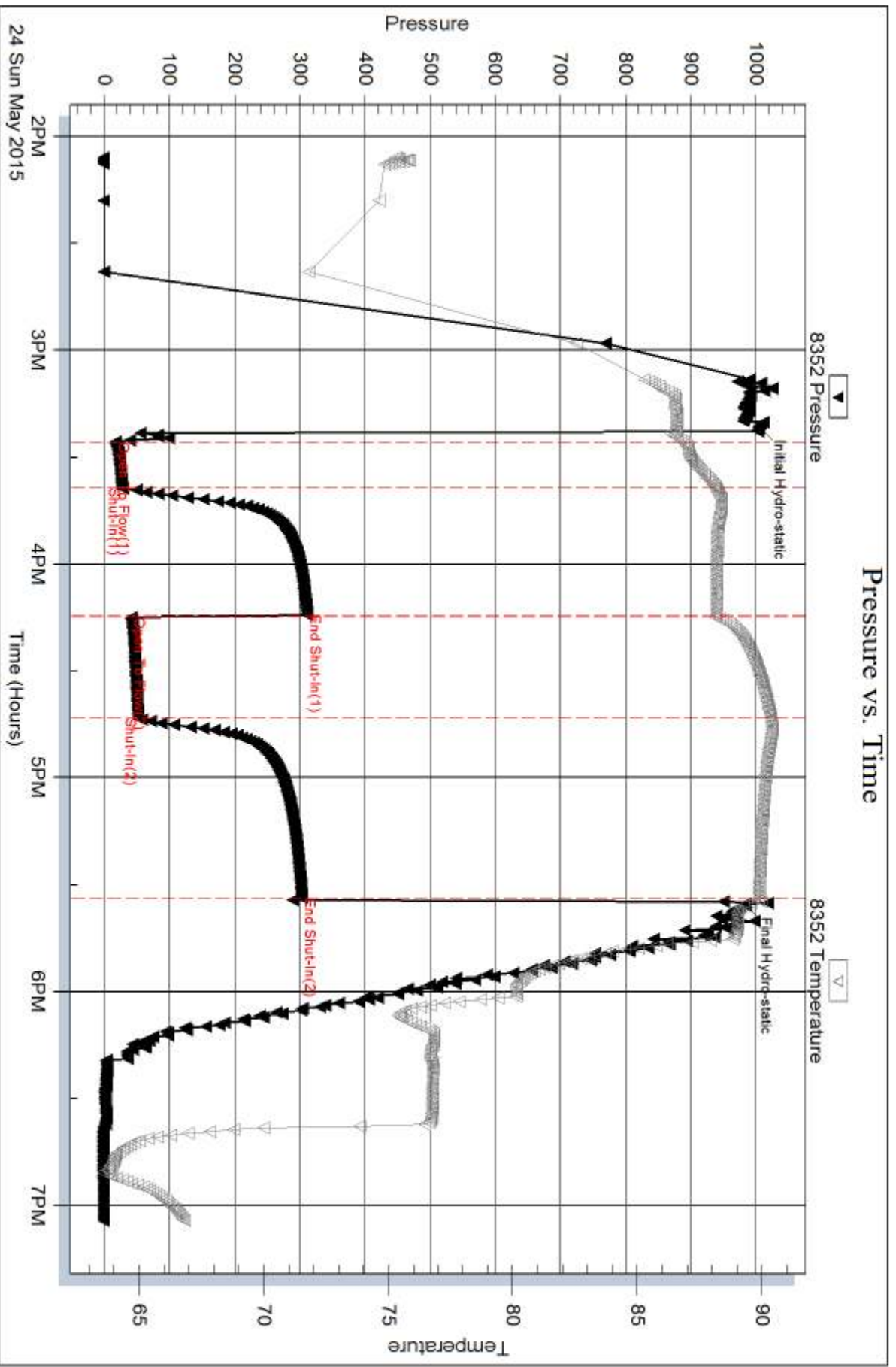
Serial #: Gp-1

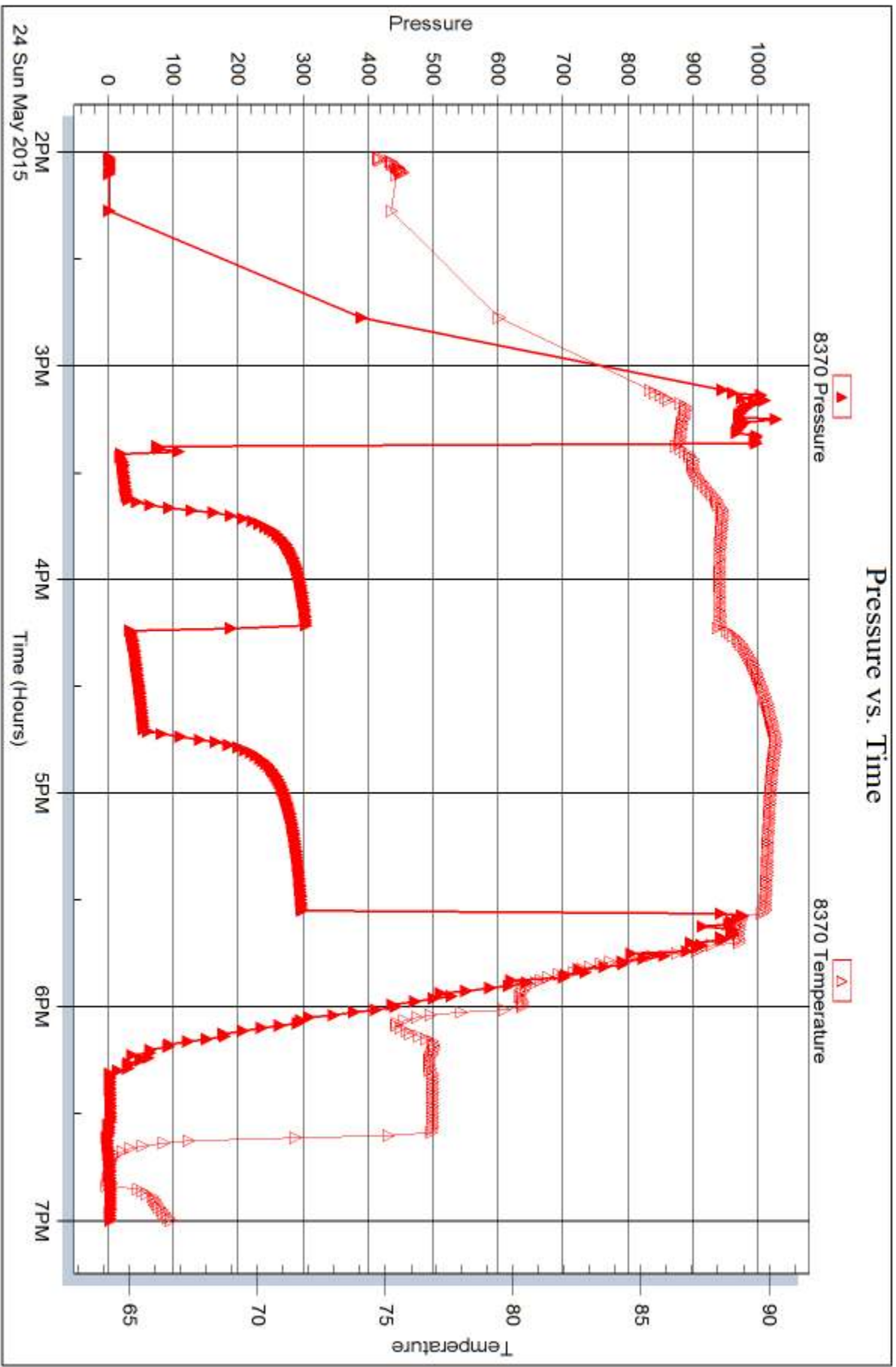
Laboratory Name: Caraway

Laboratory Location: Liberal, KS

Recovery Comments: Smpler Data: .75 cubic ft. Gas/ 1715 ML. SW/ trce of mud/ 222 psi

Rw .075ohms@65 deg







## DRILL STEM TEST REPORT

Prepared For: **StrataKan Expl. LLC**

204 W. Mill  
Plainville KS 67663

ATTN: Chris Bean

**BNE #19-22**

**19-17s-9w Ellsworth,KS**

Start Date: 2015.05.25 @ 09:27:01

End Date: 2015.05.25 @ 15:30:01

Job Ticket #: 59779                      DST #: 2

Trilobite Testing, Inc  
1515 Commerce Parkway Hays, KS 67601  
ph: 785-625-4778 fax: 785-625-5620

Printed: 2015.05.28 @ 13:45:37





**TRILOBITE TESTING, INC**

# DRILL STEM TEST REPORT

StrataKan Expl. LLC  
 204 W. Mill  
 Plainville KS 67663  
 ATTN: Chris Bean

**19-17s-9w Ellsworth, KS**  
**BNE #19-22**  
 Job Ticket: 59779 **DST#: 2**  
 Test Start: 2015.05.25 @ 09:27:01

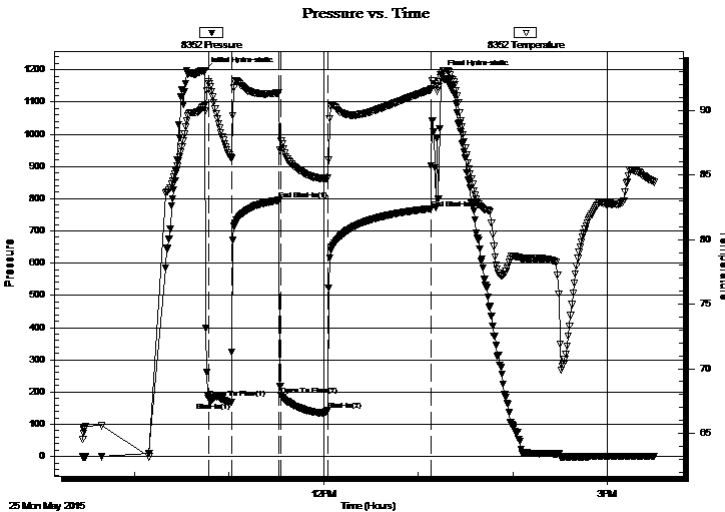
## GENERAL INFORMATION:

Formation: **Severy Shale**  
 Deviated: No Whipstock: ft (KB)  
 Time Tool Opened: 10:46:46  
 Time Test Ended: 15:30:01  
 Interval: **2487.00 ft (KB) To 2513.00 ft (KB) (TVD)**  
 Total Depth: 2513.00 ft (KB) (TVD)  
 Hole Diameter: 7.88 inches Hole Condition:  
 Test Type: Conventional Bottom Hole (Reset)  
 Tester: Gary Pevoteaux  
 Unit No: 80  
 Reference Elevations: 1788.00 ft (KB)  
 1778.00 ft (CF)  
 KB to GR/CF: 10.00 ft

**Serial #: 8352 Outside**  
 Press@RunDepth: 144.27 psig @ 2488.00 ft (KB) Capacity: 8000.00 psig  
 Start Date: 2015.05.25 End Date: 2015.05.25 Last Calib.: 2015.05.25  
 Start Time: 09:27:06 End Time: 15:30:00 Time On Btm: 2015.05.25 @ 10:44:16  
 Time Off Btm: 2015.05.25 @ 13:14:16

TEST COMMENT: IF:Strong blow . GTS in 2 mins. (see gas flow report)  
 IS:No blow .  
 FF:Strong blow . (see gas flow report)  
 FS:Weak blow . 1 - 3"

## PRESSURE SUMMARY



Time (Min.)	Pressure (psig)	Temp (deg F)	Annotation
0	1195.96	90.38	Initial Hydro-static
3	180.42	92.19	Open To Flow (1)
17	167.63	86.28	Shut-In(1)
48	795.32	91.36	End Shut-In(1)
49	189.76	87.65	Open To Flow (2)
79	144.27	84.77	Shut-In(2)
144	768.80	91.61	End Shut-In(2)
150	1184.83	92.56	Final Hydro-static

## Recovery

Length (ft)	Description	Volume (bbl)
40.00	Drig.mud	0.56
0.00	GTS	0.00

\* Recovery from multiple tests

## Gas Rates

	Choke (inches)	Pressure (psig)	Gas Rate (Mcf/d)
First Gas Rate	0.75	43.00	896.58
Last Gas Rate	0.75	45.00	927.82
Max. Gas Rate	0.75	45.00	927.82



**TRILOBITE  
TESTING, INC**

# DRILL STEM TEST REPORT

StrataKan Expl. LLC

**19-17s-9w Ellsworth,KS**

204 W. Mill  
Plainville KS 67663

**BNE #19-22**

ATTN: Chris Bean

Job Ticket: 59779

**DST#: 2**

Test Start: 2015.05.25 @ 09:27:01

## GENERAL INFORMATION:

Formation: **Severy Shale**

Deviated: No Whipstock: ft (KB)

Time Tool Opened: 10:46:46

Time Test Ended: 15:30:01

Test Type: Conventional Bottom Hole (Reset)

Tester: Gary Pevoteaux

Unit No: 80

**Interval: 2487.00 ft (KB) To 2513.00 ft (KB) (TVD)**

Reference Elevations: 1788.00 ft (KB)

Total Depth: 2513.00 ft (KB) (TVD)

1778.00 ft (CF)

Hole Diameter: 7.88 inchesHole Condition:

KB to GR/CF: 10.00 ft

**Serial #: 8370**

**Inside**

Press@RunDepth: psig @ 2488.00 ft (KB)

Capacity: 8000.00 psig

Start Date: 2015.05.25

End Date: 2015.05.25

Last Calib.: 2015.05.25

Start Time: 09:21:03

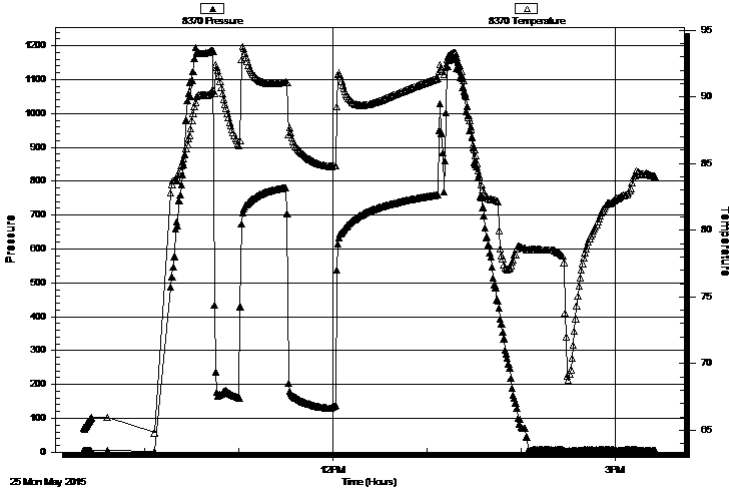
End Time: 15:25:57

Time On Btm:

Time Off Btm:

TEST COMMENT: IF:Strong blow . GTS in 2 mins. (see gas flow report)  
IS:No blow .  
FF:Strong blow . (see gas flow report)  
FS:Weak blow . 1 - 3"

Pressure vs. Time



### PRESSURE SUMMARY

Time (Min.)	Pressure (psig)	Temp (deg F)	Annotation

### Recovery

Length (ft)	Description	Volume (bbl)
40.00	Drig.mud	0.56
0.00	GTS	0.00

### Gas Rates

	Choke (inches)	Pressure (psig)	Gas Rate (Mcf/d)
First Gas Rate	0.75	43.00	896.58
Last Gas Rate	0.75	45.00	927.82
Max. Gas Rate	0.75	45.00	927.82

\* Recovery from multiple tests



**TRILOBITE  
TESTING, INC**

# DRILL STEM TEST REPORT

**TOOL DIAGRAM**

StrataKan Expl. LLC

**19-17s-9w Ellsworth,KS**

204 W. Mill  
Plainville KS 67663

**BNE #19-22**

Job Ticket: 59779

**DST#: 2**

ATTN: Chris Bean

Test Start: 2015.05.25 @ 09:27:01

## Tool Information

Drill Pipe:	Length: 2479.00 ft	Diameter: 3.80 inches	Volume: 34.77 bbl	Tool Weight: 2400.00 lb
Heavy Wt. Pipe:	Length: 0.00 ft	Diameter: 0.00 inches	Volume: 0.00 bbl	Weight set on Packer: 24000.00 lb
Drill Collar:	Length: 0.00 ft	Diameter: 0.00 inches	Volume: 0.00 bbl	Weight to Pull Loose: 74000.00 lb
			<u>Total Volume: 34.77 bbl</u>	Tool Chased 12.00 ft
Drill Pipe Above KB:	22.00 ft			String Weight: Initial 33000.00 lb
Depth to Top Packer:	2487.00 ft			Final 33500.00 lb
Depth to Bottom Packer:	ft			
Interval between Packers:	26.00 ft			
Tool Length:	56.00 ft			
Number of Packers:	2	Diameter: 6.75 inches		

Tool Comments:

## Tool Description

Tool Description	Length (ft)	Serial No.	Position	Depth (ft)	Accum. Lengths
Change Over Sub	1.00			2458.00	
Shut In Tool	5.00			2463.00	
Sampler	2.00			2465.00	
Hydraulic tool	5.00			2470.00	
Jars	5.00			2475.00	
Safety Joint	3.00			2478.00	
Packer	4.00			2482.00	30.00 Bottom Of Top Packer
Packer	5.00			2487.00	
Stubb	1.00			2488.00	
Recorder	0.00	8352	Outside	2488.00	
Recorder	0.00	8370	Inside	2488.00	
Perforations	20.00			2508.00	
Bullnose	5.00			2513.00	26.00 Bottom Packers & Anchor

**Total Tool Length: 56.00**



**TRILOBITE  
TESTING, INC**

# DRILL STEM TEST REPORT

## FLUID SUMMARY

StrataKan Expl. LLC

**19-17s-9w Ellsworth, KS**

204 W. Mill  
Plainville KS 67663

**BNE #19-22**

Job Ticket: 59779

**DST#: 2**

ATTN: Chris Bean

Test Start: 2015.05.25 @ 09:27:01

### Mud and Cushion Information

Mud Type: Gel Chem

Cushion Type:

Oil API:

deg API

Mud Weight: 9.00 lb/gal

Cushion Length:

ft

Water Salinity:

4000 ppm

Viscosity: 48.00 sec/qt

Cushion Volume:

bbbl

Water Loss: 7.96 in<sup>3</sup>

Gas Cushion Type:

Resistivity: 0.00 ohm.m

Gas Cushion Pressure:

psig

Salinity: 4000.00 ppm

Filter Cake: 0.20 inches

### Recovery Information

Recovery Table

Length ft	Description	Volume bbl
40.00	Drig.mud	0.561
0.00	GTS	0.000

Total Length: 40.00 ft      Total Volume: 0.561 bbl

Num Fluid Samples: 0

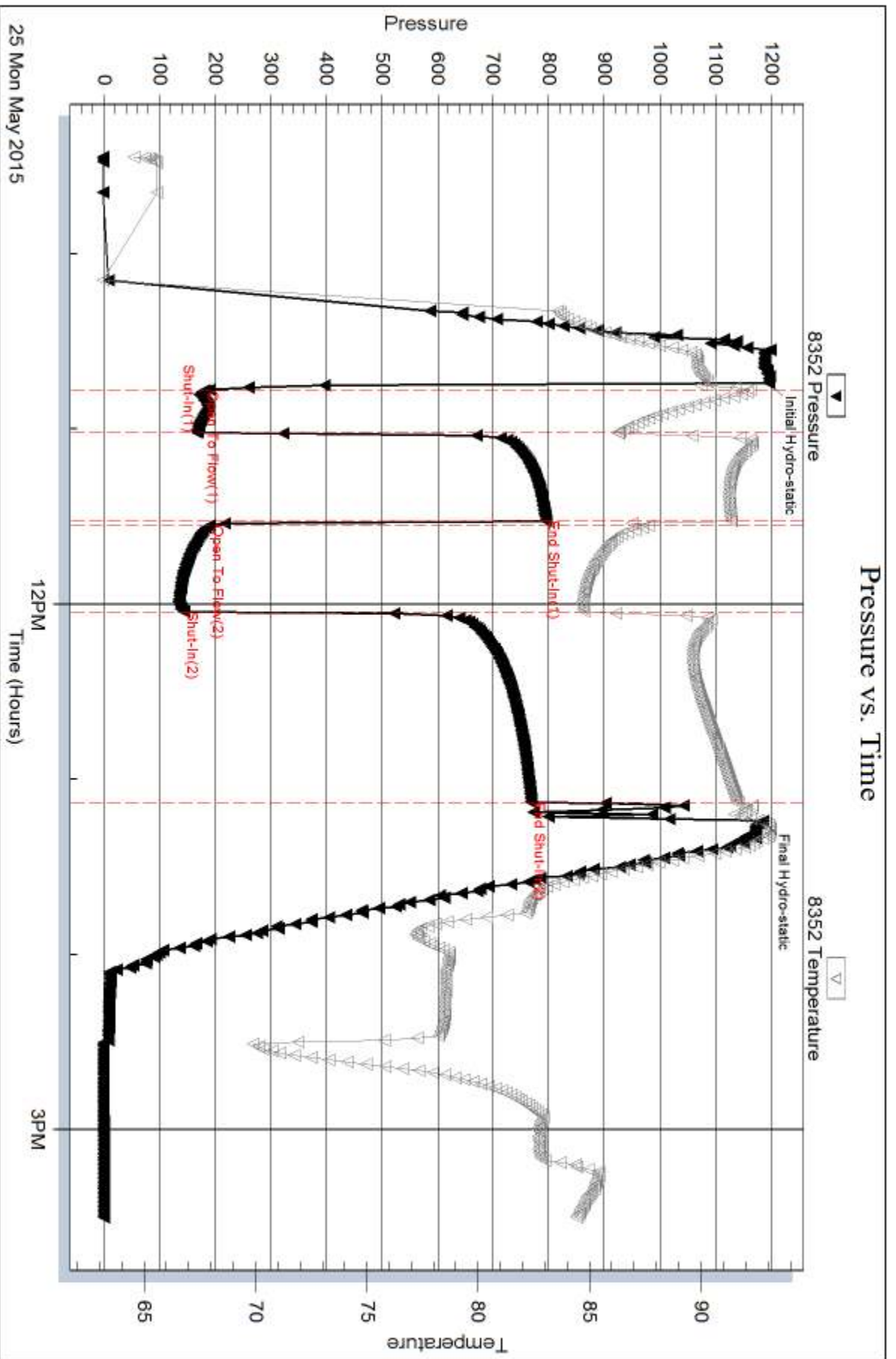
Num Gas Bombs: 3

Serial #: GP-2

Laboratory Name: Caraway

Laboratory Location: Liberal, KS

Recovery Comments: Sampler data: 9.7 cubic ft. Gas/ 100 ML. Mud/ Cuttings  
/ 290 psi.



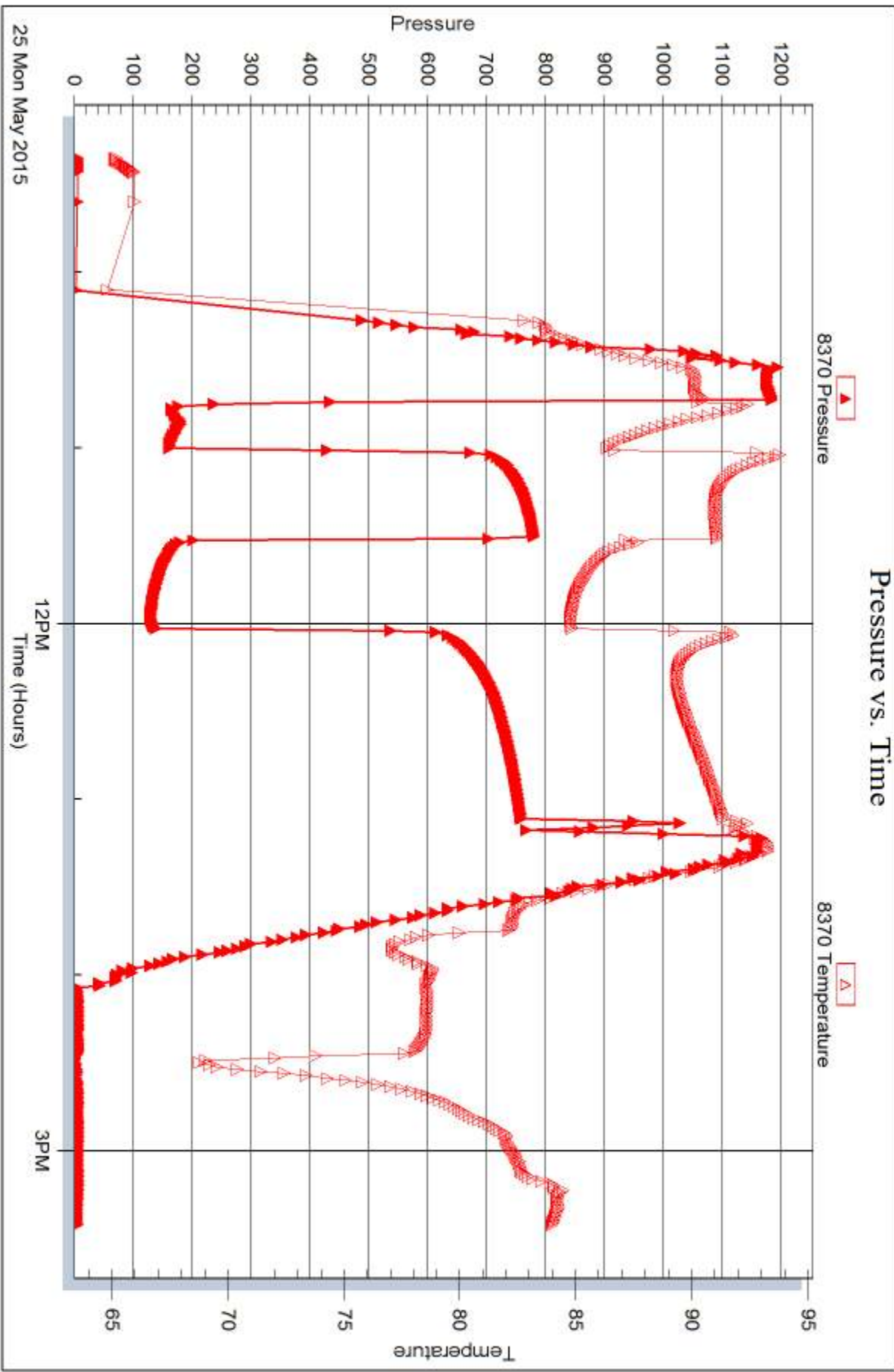
Serial #: 8370

Inside

StrataKan Expl. LLC

BNE#19-22

DST Test Number: 2



Triobite Testing, Inc

Ref. No: 59779

Printed: 2015.05.28 @ 13:45:39



## DRILL STEM TEST REPORT

Prepared For: **StrataKan Expl. LLC**

204 W. Mill  
Plainville KS 67663

ATTN: Chris Bean

**BNE #19-22**

**19-17s-9w Ellsworth,KS**

Start Date: 2015.05.26 @ 21:52:00

End Date: 2015.05.27 @ 01:43:30

Job Ticket #: 63032                      DST #: 3

Trilobite Testing, Inc  
1515 Commerce Parkway Hays, KS 67601  
ph: 785-625-4778 fax: 785-625-5620

Printed: 2015.05.28 @ 13:37:20



**TRILOBITE  
TESTING, INC**

# DRILL STEM TEST REPORT

StrataKan Expl. LLC

**19-17s-9w Ellsworth, KS**

204 W. Mill  
Plainville KS 67663

**BNE #19-22**

Job Ticket: 63032

**DST#: 3**

ATTN: Chris Bean

Test Start: 2015.05.26 @ 21:52:00

## GENERAL INFORMATION:

Formation: **LKC J**

Deviated: No Whipstock: ft (KB)

Time Tool Opened: 23:06:30

Time Test Ended: 01:43:30

Test Type: Conventional Bottom Hole (Initial)

Tester: Ken Swinney

Unit No: 58

**Interval: 3080.00 ft (KB) To 3103.00 ft (KB) (TVD)**

Reference Elevations: 1788.00 ft (KB)

Total Depth: 3103.00 ft (KB) (TVD)

1778.00 ft (CF)

Hole Diameter: 7.88 inches Hole Condition: Fair

KB to GR/CF: 10.00 ft

**Serial #: 6838**

**Inside**

Press@RunDepth: 19.34 psig @ 3099.00 ft (KB)

Capacity: 8000.00 psig

Start Date: 2015.05.26

End Date:

2015.05.27

Last Calib.:

2015.05.27

Start Time: 21:53:00

End Time:

01:43:30

Time On Btm:

2015.05.26 @ 23:05:00

Time Off Btm:

2015.05.27 @ 00:38:30

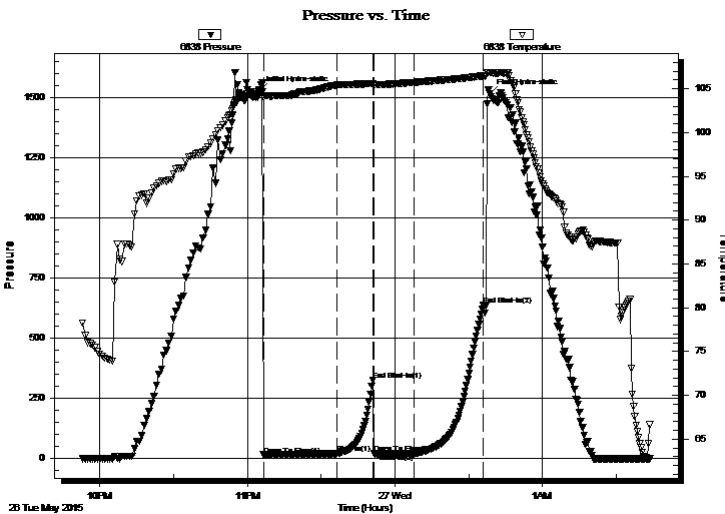
**TEST COMMENT:** IFP 30 Minutes Weak blow/Blow built to 1/4 inch then started to die after 23 minutes

ISI 15 Minutes No blow back

FFP 15 Minutes Weak surface blow/Blow died after 10 minutes

FSI 30 Minutes No blow back

## PRESSURE SUMMARY



Time (Min.)	Pressure (psig)	Temp (deg F)	Annotation
0	1531.63	104.62	Initial Hydro-static
2	14.91	104.03	Open To Flow (1)
32	20.62	105.42	Shut-In(1)
46	326.70	105.60	End Shut-In(1)
47	20.73	105.49	Open To Flow (2)
63	19.34	105.71	Shut-In(2)
91	638.97	106.46	End Shut-In(2)
94	1516.73	106.83	Final Hydro-static

## Recovery

Length (ft)	Description	Volume (bbl)
10.00	Mud with show of oil/Mud 100%	0.14

## Gas Rates

	Choke (inches)	Pressure (psig)	Gas Rate (Mcf/d)





**TRILOBITE  
TESTING, INC**

# DRILL STEM TEST REPORT

StrataKan Expl. LLC

**19-17s-9w Ellsworth, KS**

204 W. Mill  
Plainville KS 67663

**BNE #19-22**

Job Ticket: 63032

**DST#: 3**

ATTN: Chris Bean

Test Start: 2015.05.26 @ 21:52:00

## GENERAL INFORMATION:

Formation: **LKC J**

Deviated: No Whipstock: ft (KB)

Time Tool Opened: 23:06:30

Time Test Ended: 01:43:30

Test Type: Conventional Bottom Hole (Initial)

Tester: Ken Swinney

Unit No: 58

**Interval: 3080.00 ft (KB) To 3103.00 ft (KB) (TVD)**

Reference Elevations: 1788.00 ft (KB)

Total Depth: 3103.00 ft (KB) (TVD)

1778.00 ft (CF)

Hole Diameter: 7.88 inches Hole Condition: Fair

KB to GR/CF: 10.00 ft

**Serial #: 6663 Outside**

Press@RunDepth: 639.69 psig @ 3100.00 ft (KB)

Capacity: 8000.00 psig

Start Date: 2015.05.26

End Date:

2015.05.27

Last Calib.:

2015.05.27

Start Time: 21:53:00

End Time:

01:44:00

Time On Btm:

2015.05.26 @ 23:05:30

Time Off Btm:

2015.05.27 @ 00:39:30

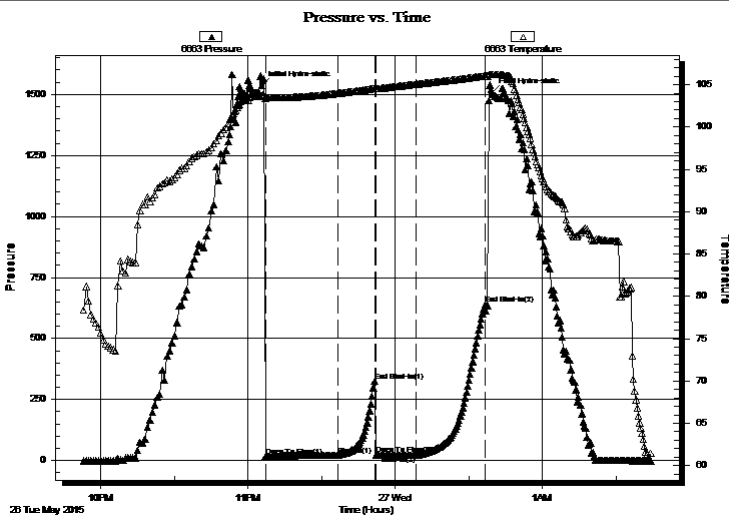
**TEST COMMENT:** IFP 30 Minutes Weak blow/Blow built to 1/4 inch then started to die after 23 minutes

ISI 15 Minutes No blow back

FFP 15 Minutes Weak surface blow/Blow died after 10 minutes

FSI 30 Minutes No blow back

## PRESSURE SUMMARY



Time (Min.)	Pressure (psig)	Temp (deg F)	Annotation
0	1536.17	103.76	Initial Hydro-static
2	17.05	103.36	Open To Flow (1)
31	22.79	103.98	Shut-In(1)
46	324.63	104.59	End Shut-In(1)
47	24.09	104.51	Open To Flow (2)
63	22.72	105.07	Shut-In(2)
91	639.69	106.03	End Shut-In(2)
94	1508.75	106.20	Final Hydro-static

## Recovery

Length (ft)	Description	Volume (bbl)
10.00	Mud with show of oil/Mud 100%	0.14

## Gas Rates

	Choke (inches)	Pressure (psig)	Gas Rate (Mcf/d)



**TRILOBITE  
TESTING, INC**

# DRILL STEM TEST REPORT

**TOOL DIAGRAM**

StrataKan Expl. LLC

**19-17s-9w Ellsworth,KS**

204 W. Mill  
Plainville KS 67663

**BNE #19-22**

Job Ticket: 63032

**DST#: 3**

ATTN: Chris Bean

Test Start: 2015.05.26 @ 21:52:00

## Tool Information

Drill Pipe:	Length: 3081.00 ft	Diameter: 3.80 inches	Volume: 43.22 bbl	Tool Weight: 2000.00 lb
Heavy Wt. Pipe:	Length: 0.00 ft	Diameter: 0.00 inches	Volume: 0.00 bbl	Weight set on Packer: 20000.00 lb
Drill Collar:	Length: 0.00 ft	Diameter: 0.00 inches	Volume: 0.00 bbl	Weight to Pull Loose: 40000.00 lb
			<u>Total Volume: 43.22 bbl</u>	Tool Chased 0.00 ft
Drill Pipe Above KB:	28.00 ft			String Weight: Initial 34000.00 lb
Depth to Top Packer:	3080.00 ft			Final 34000.00 lb
Depth to Bottom Packer:	ft			
Interval between Packers:	23.00 ft			
Tool Length:	50.00 ft			
Number of Packers:	2	Diameter: 6.75 inches		

Tool Comments:

## Tool Description

Tool Description	Length (ft)	Serial No.	Position	Depth (ft)	Accum. Lengths
Shut-In Tool	5.00			3058.00	
Hydraulic tool	5.00			3063.00	
Jars	5.00			3068.00	
Safety Joint	2.00			3070.00	
Top Packer	5.00			3075.00	
Packer	5.00			3080.00	27.00 Bottom Of Top Packer
Anchor	18.00			3098.00	
Recorder	1.00	6838	Inside	3099.00	
Recorder	1.00	6663	Outside	3100.00	
Bullnose	3.00			3103.00	23.00 Anchor Tool
<b>Total Tool Length:</b>	<b>50.00</b>				



**TRILOBITE  
TESTING, INC**

# DRILL STEM TEST REPORT

## FLUID SUMMARY

StrataKan Expl. LLC

**19-17s-9w Ellsworth,KS**

204 W. Mill  
Plainville KS 67663

**BNE #19-22**

Job Ticket: 63032

**DST#: 3**

ATTN: Chris Bean

Test Start: 2015.05.26 @ 21:52:00

### Mud and Cushion Information

Mud Type: Gel Chem

Cushion Type:

Oil API:

deg API

Mud Weight: 9.00 lb/gal

Cushion Length:

ft

Water Salinity:

ppm

Viscosity: 53.00 sec/qt

Cushion Volume:

bbbl

Water Loss: 7.18 in<sup>3</sup>

Gas Cushion Type:

Resistivity: ohm.m

Gas Cushion Pressure:

psig

Salinity: 4000.00 ppm

Filter Cake: 1.00 inches

### Recovery Information

Recovery Table

Length ft	Description	Volume bbl
10.00	Mud with show of oil/Mud 100%	0.140

Total Length: 10.00 ft      Total Volume: 0.140 bbl

Num Fluid Samples: 0

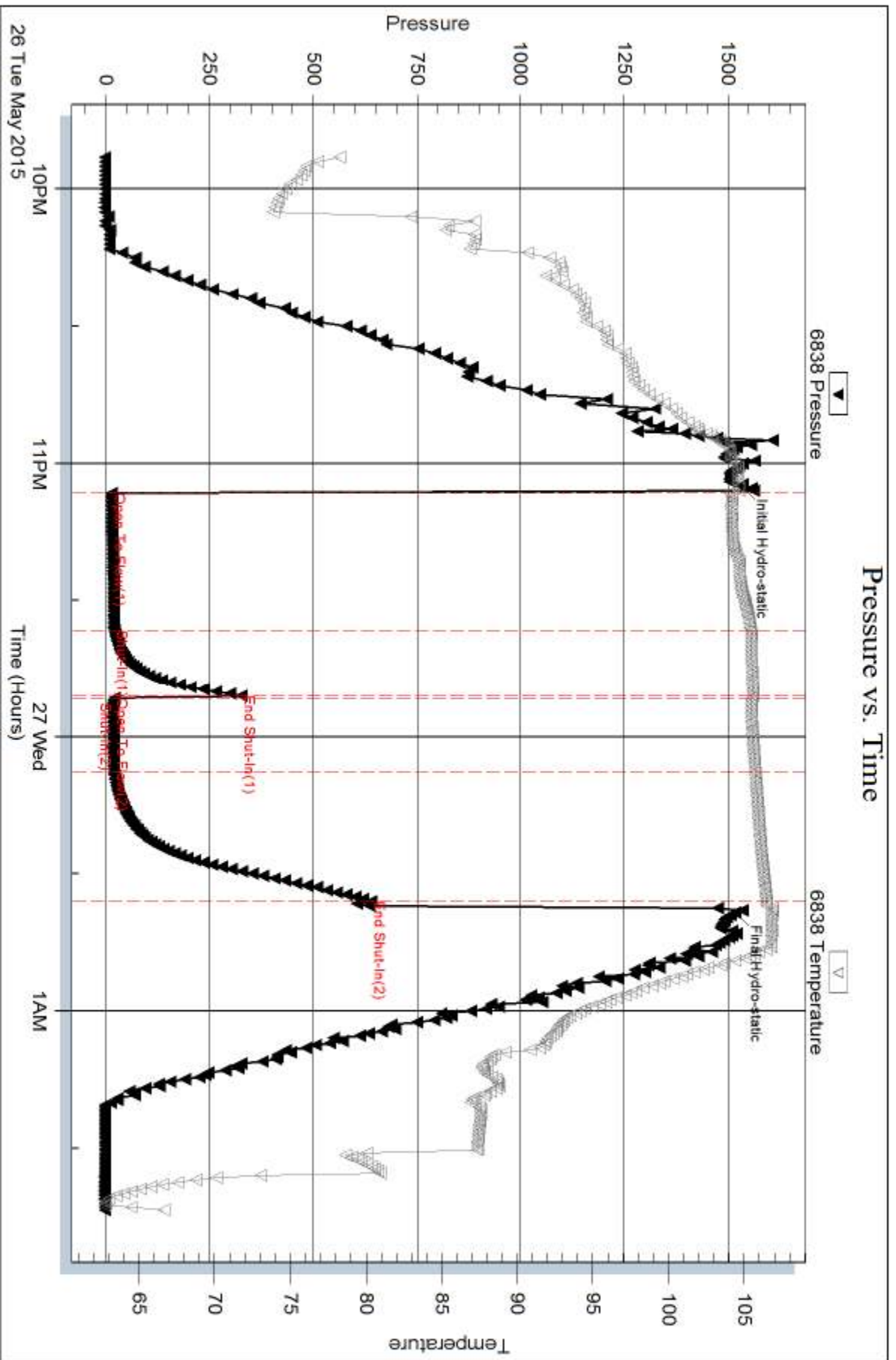
Num Gas Bombs: 0

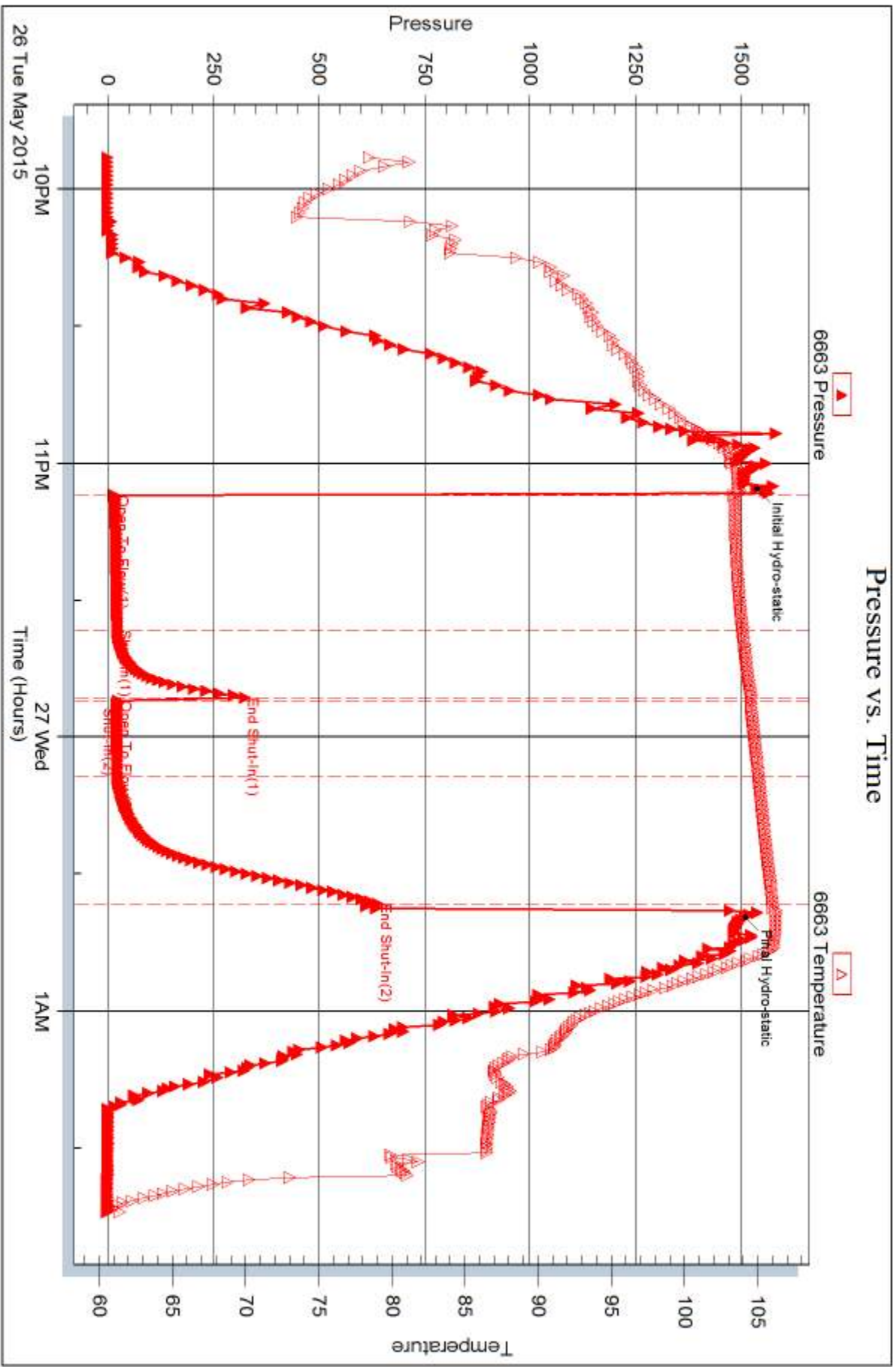
Serial #:

Laboratory Name:

Laboratory Location:

Recovery Comments:







## DRILL STEM TEST REPORT

Prepared For: **StrataKan Expl. LLC**

204 W. Mill  
Plainville KS 67663

ATTN: Chris Bean

**BNE #19-22**

**19-17s-9w Ellsworth,KS**

Start Date: 2015.05.27 @ 17:00:00

End Date: 2015.05.27 @ 22:38:30

Job Ticket #: 63033                      DST #: 4

Trilobite Testing, Inc  
1515 Commerce Parkway Hays, KS 67601  
ph: 785-625-4778 fax: 785-625-5620

Printed: 2015.05.28 @ 13:36:55



**TRILOBITE TESTING, INC**

# DRILL STEM TEST REPORT

StrataKan Expl. LLC  
 204 W. Mill  
 Plainville KS 67663  
 ATTN: Chris Bean

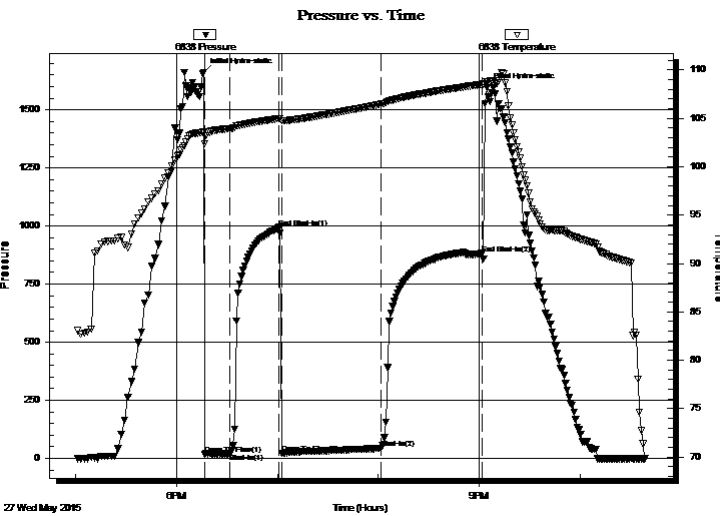
**19-17s-9w Ellsworth, KS**  
**BNE #19-22**  
 Job Ticket: 63033 **DST#: 4**  
 Test Start: 2015.05.27 @ 17:00:00

## GENERAL INFORMATION:

Formation: **Arbuckle**  
 Deviated: No Whipstock: ft (KB)  
 Time Tool Opened: 18:16:30  
 Time Test Ended: 22:38:30  
 Interval: **3220.00 ft (KB) To 3227.00 ft (KB) (TVD)**  
 Total Depth: 3227.00 ft (KB) (TVD)  
 Hole Diameter: 7.88 inches Hole Condition: Poor  
 Test Type: Conventional Bottom Hole (Initial)  
 Tester: Ken Swinney  
 Unit No: 58  
 Reference Elevations: 1788.00 ft (KB)  
 1778.00 ft (CF)  
 KB to GR/CF: 10.00 ft

**Serial #: 6838 Outside**  
 Press@RunDepth: 43.69 psig @ 3224.00 ft (KB) Capacity: 8000.00 psig  
 Start Date: 2015.05.27 End Date: 2015.05.27 Last Calib.: 2015.05.27  
 Start Time: 17:01:00 End Time: 22:38:30 Time On Btm: 2015.05.27 @ 18:16:00  
 Time Off Btm: 2015.05.27 @ 21:04:30

**TEST COMMENT:** IFP 15 Minutes Good blow built to 11"  
 ISI 30 Minutes Light surface blow back throughout  
 FFP 60 Minutes BOB in 14 minutes  
 FSI 60 Minutes Very light surface blow back throughout



## PRESSURE SUMMARY

Time (Min.)	Pressure (psig)	Temp (deg F)	Annotation
0	1659.76	103.56	Initial Hydro-static
1	16.62	102.35	Open To Flow (1)
16	20.59	103.94	Shut-In(1)
45	993.43	104.98	End Shut-In(1)
47	21.39	104.75	Open To Flow (2)
106	43.69	106.45	Shut-In(2)
166	881.29	108.51	End Shut-In(2)
169	1595.24	108.81	Final Hydro-static

## Recovery

Length (ft)	Description	Volume (bbl)
15.00	GWMCeO 20% M 10% W 20% G 50% Err0.21)	
93.00	SMCGO 5% M 10% G 85% O	1.30
0.00	449' GIP	0.00

## Gas Rates

	Choke (inches)	Pressure (psig)	Gas Rate (Mcf/d)



**TRILOBITE TESTING, INC**

# DRILL STEM TEST REPORT

StrataKan Expl. LLC  
 204 W. Mill  
 Plainville KS 67663  
 ATTN: Chris Bean

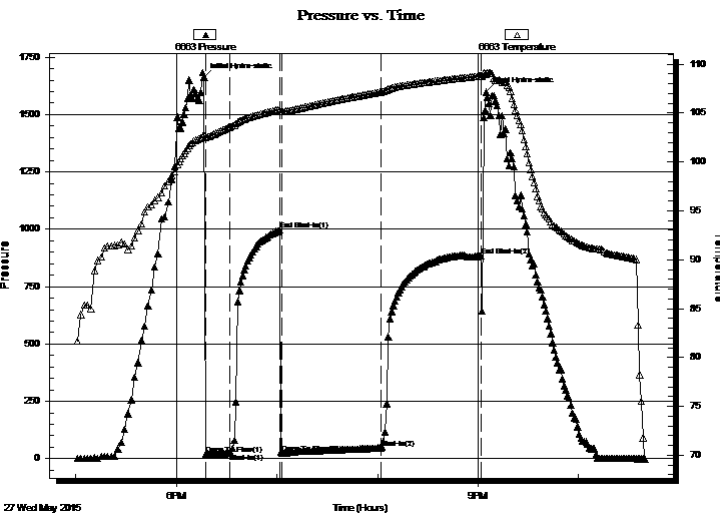
**19-17s-9w Ellsworth, KS**  
**BNE #19-22**  
 Job Ticket: 63033 **DST#: 4**  
 Test Start: 2015.05.27 @ 17:00:00

## GENERAL INFORMATION:

Formation: **Arbuckle**  
 Deviated: No Whipstock: ft (KB)  
 Time Tool Opened: 18:16:30  
 Time Test Ended: 22:38:30  
 Interval: **3220.00 ft (KB) To 3227.00 ft (KB) (TVD)**  
 Total Depth: 3227.00 ft (KB) (TVD)  
 Hole Diameter: 7.88 inches Hole Condition: Poor  
 Test Type: Conventional Bottom Hole (Initial)  
 Tester: Ken Swinney  
 Unit No: 58  
 Reference Elevations: 1788.00 ft (KB)  
 1778.00 ft (CF)  
 KB to GR/CF: 10.00 ft

**Serial #: 6663 Inside**  
 Press@RunDepth: 883.81 psig @ 3223.00 ft (KB) Capacity: 8000.00 psig  
 Start Date: 2015.05.27 End Date: 2015.05.27 Last Calib.: 2015.05.27  
 Start Time: 17:01:00 End Time: 22:39:30 Time On Btm: 2015.05.27 @ 18:16:30  
 Time Off Btm: 2015.05.27 @ 21:05:00

**TEST COMMENT:** IFP 15 Minutes Good blow built to 11"  
 ISI 30 Minutes Light surface blow back throughout  
 FFP 60 Minutes BOB in 14 minutes  
 FSI 60 Minutes Very light surface blow back throughout



## PRESSURE SUMMARY

Time (Min.)	Pressure (psig)	Temp (deg F)	Annotation
0	1663.05	102.82	Initial Hydro-static
1	20.89	102.54	Open To Flow (1)
16	23.65	103.58	Shut-In(1)
45	996.38	105.37	End Shut-In(1)
47	23.52	105.14	Open To Flow (2)
106	46.97	107.17	Shut-In(2)
166	883.81	108.81	End Shut-In(2)
169	1597.89	109.05	Final Hydro-static

## Recovery

Length (ft)	Description	Volume (bbl)
15.00	GWMCeO 20% M 10% W 20% G 50% Br 0.21	
93.00	SMCGO 5% M 10% G 85% O	1.30
0.00	449' GIP	0.00

## Gas Rates

Choke (inches)	Pressure (psig)	Gas Rate (Mcf/d)





**TRILOBITE  
TESTING, INC**

# DRILL STEM TEST REPORT

**TOOL DIAGRAM**

StrataKan Expl. LLC

**19-17s-9w Ellsworth,KS**

204 W. Mill  
Plainville KS 67663

**BNE #19-22**

Job Ticket: 63033

**DST#: 4**

ATTN: Chris Bean

Test Start: 2015.05.27 @ 17:00:00

## Tool Information

Drill Pipe:	Length: 3208.00 ft	Diameter: 3.80 inches	Volume: 45.00 bbl	Tool Weight: 2000.00 lb
Heavy Wt. Pipe:	Length: 0.00 ft	Diameter: 0.00 inches	Volume: 0.00 bbl	Weight set on Packer: 20000.00 lb
Drill Collar:	Length: 0.00 ft	Diameter: 0.00 inches	Volume: 0.00 bbl	Weight to Pull Loose: 40000.00 lb
			<u>Total Volume: 45.00 bbl</u>	Tool Chased 0.00 ft
Drill Pipe Above KB:	15.00 ft			String Weight: Initial 36000.00 lb
Depth to Top Packer:	3220.00 ft			Final 37000.00 lb
Depth to Bottom Packer:	ft			
Interval between Packers:	7.00 ft			
Tool Length:	34.00 ft			
Number of Packers:	2	Diameter: 6.75 inches		

Tool Comments:

## Tool Description

Tool Description	Length (ft)	Serial No.	Position	Depth (ft)	Accum. Lengths
Shut-In Tool	5.00			3198.00	
Hydraulic tool	5.00			3203.00	
Jars	5.00			3208.00	
Safety Joint	2.00			3210.00	
Top Packer	5.00			3215.00	
Packer	5.00			3220.00	27.00 Bottom Of Top Packer
Anchor	2.00			3222.00	
Recorder	1.00	6663	Inside	3223.00	
Recorder	1.00	6838	Outside	3224.00	
Bullnose	3.00			3227.00	7.00 Anchor Tool
<b>Total Tool Length:</b>	<b>34.00</b>				



**TRILOBITE  
TESTING, INC**

# DRILL STEM TEST REPORT

**FLUID SUMMARY**

StrataKan Expl. LLC

**19-17s-9w Ellsworth,KS**

204 W. Mill  
Plainville KS 67663

**BNE #19-22**

Job Ticket: 63033

**DST#: 4**

ATTN: Chris Bean

Test Start: 2015.05.27 @ 17:00:00

## Mud and Cushion Information

Mud Type: Gel Chem

Cushion Type:

Oil API:

44 deg API

Mud Weight: 9.00 lb/gal

Cushion Length:

ft

Water Salinity:

ppm

Viscosity: 54.00 sec/qt

Cushion Volume:

bbbl

Water Loss: 7.98 in<sup>3</sup>

Gas Cushion Type:

Resistivity: ohm.m

Gas Cushion Pressure:

psig

Salinity: 4000.00 ppm

Filter Cake: 1.00 inches

## Recovery Information

Recovery Table

Length ft	Description	Volume bbl
15.00	GWMCeO 20% M 10% W 20% G 50% Emuls	0.210
93.00	SMCGO 5% M 10% G 85% O	1.305
0.00	449' GIP	0.000

Total Length: 108.00 ft

Total Volume: 1.515 bbl

Num Fluid Samples: 0

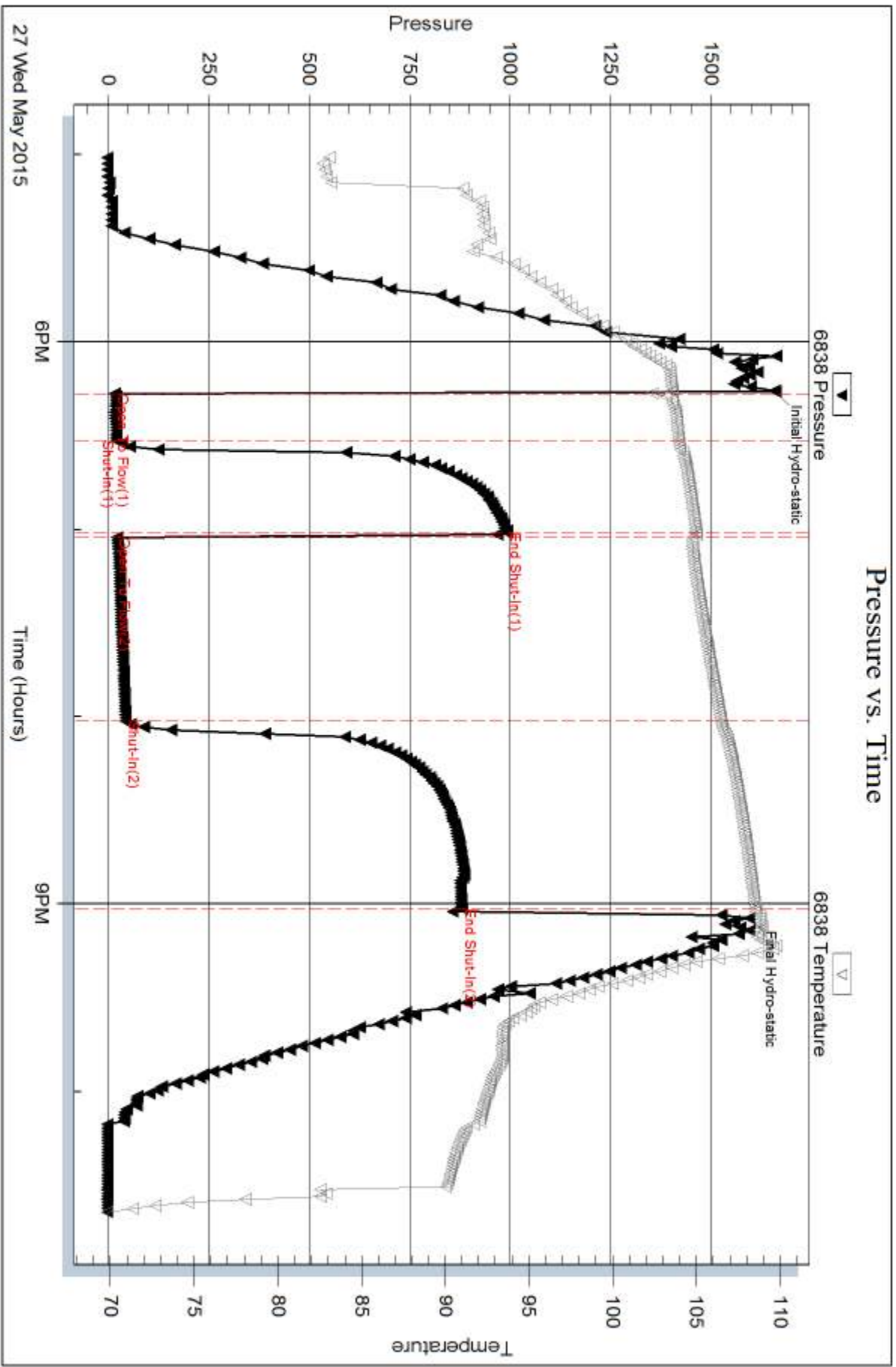
Num Gas Bombs: 0

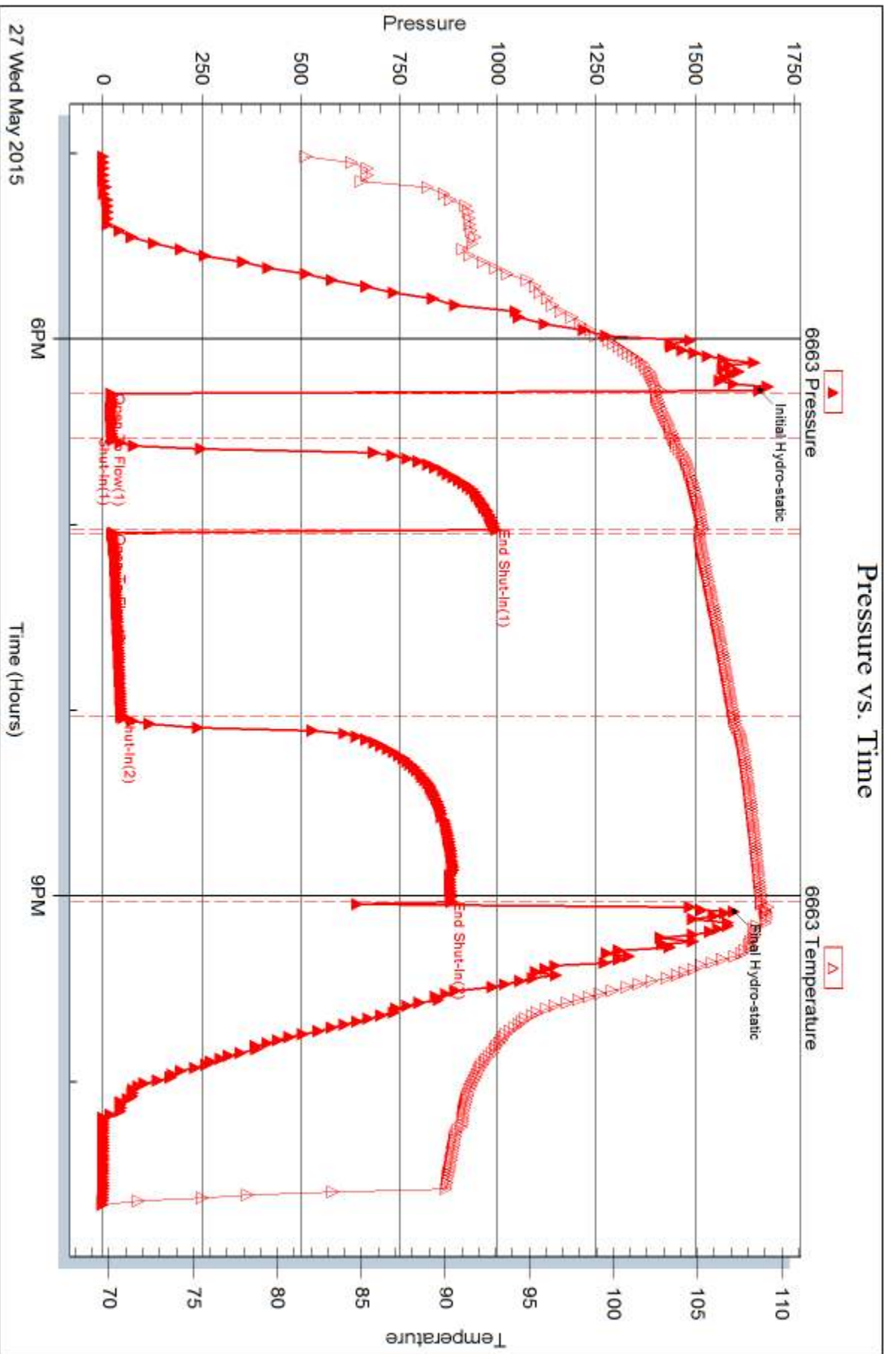
Serial #:

Laboratory Name:

Laboratory Location:

Recovery Comments:







# TRILOBITE TESTING INC.

1515 Commerce Parkway • Hays, Kansas 67601

## Test Ticket

NO. 59777

4/10

Well Name & No. BNE # 19-22 Test No. 1 Date 5-24-15  
 Company STRATAKAN EXPL. LLC Elevation 1788 KB 1778 GL  
 Address 204 W. MILL, PLAINVILLE Ks. 67663  
 Co. Rep / Geo. CHRIS B Rig SOUTHWIND DRLG. #1  
 Location: Sec. 19 Twp. 17S Rge. 9W Co. ELLSWORTH State Ks.

Interval Tested 2124-2150' Zone Tested CORONA HAVEN  
 Anchor Length 26' Drill Pipe Run 2101' Mud Wt. 8.7  
 Top Packer Depth 2119' Drill Collars Run 0 Vis 82  
 Bottom Packer Depth 2124' Wt. Pipe Run 0 WL 6.4cc  
 Total Depth 2150' Chlorides 800 ppm System LCM 4#  
 Blow Description IF: Strong blow. B.O.B. in 2 1/2 mins. ISI: No blow.  
FF: Strong blow. B.O.B. in 6 mins. FSI: No blow.

Rec	Feet of	%gas	%oil	%water	%mud
<u>378</u>	<u>Gas in pipe</u>				
<u>20</u>	<u>Dry Mud</u>				
<u>62</u>	<u>SW.</u>				

Rec Total 82 Fluid BHT 910 Gravity N/A API RW .095 @ 65 °F Chlorides 125,000 ppm

(A) Initial Hydrostatic	<u>1005</u>	<input checked="" type="checkbox"/> Test	<u>1050</u>	T-On Location	<u>1220</u>
(B) First Initial Flow	<u>17</u>	<input checked="" type="checkbox"/> Jars	<u>250</u>	T-Started	<u>1405</u>
(C) First Final Flow	<u>27</u>	<input checked="" type="checkbox"/> Safety Joint	<u>75</u>	T-Open	<u>1525</u>
(D) Initial Shut-In	<u>311</u>	<input type="checkbox"/> Circ Sub		T-Pulled	<u>1729</u>
(E) Second Initial Flow	<u>42</u>	<input type="checkbox"/> Hourly Standby	<u>63</u>	T-Out	<u>1904</u>
(F) Second Final Flow	<u>52</u>	<input checked="" type="checkbox"/> Mileage	<u>63 FROM GT B.W.</u>	Comments	
(G) Final Shut-In	<u>303</u>	<input checked="" type="checkbox"/> Sampler	<u>250</u>		
(H) Final Hydrostatic	<u>983</u>	<input type="checkbox"/> Straddle		<input type="checkbox"/> Ruined Shale Packer	
Initial Open	<u>15</u>	<input type="checkbox"/> Shale Packer		<input type="checkbox"/> Ruined Packer	
Initial Shut-In	<u>30</u>	<input type="checkbox"/> Extra Packer		<input type="checkbox"/> Extra Copies	
Final Flow	<u>30</u>	<input type="checkbox"/> Extra Recorder		Sub Total	<u>0</u>
Final Shut-In	<u>45</u>	<input type="checkbox"/> Day Standby		Total	<u>1688</u>
		<input type="checkbox"/> Accessibility		MP/DST Disc't	
		Sub Total	<u>1688</u>		

Approved By \_\_\_\_\_ Our Representative Cory Piotrowski  
 Trilobite Testing Inc. shall not be liable for damaged of any kind of the property or personnel of the one for whom a test is made, or for any loss suffered or sustained, directly or indirectly, through the use of its equipment, or its statements or opinion concerning the results of any test, tools lost or damaged in the hole shall be paid for at cost by the party for whom the test is made.



# TRILOBITE TESTING, INC.

P.O. Box 362 • Hays, Kansas 67601

## FLUID SAMPLER DATA

Ticket No. 59777 Date 5-24-15  
 Company Name STRATAKAN EXPL. LLC  
 Lease BNE # 19-22 Test No. 1  
 County ELLSWORTH KS Sec. 19 Twp. 17 Rng. 9W

### SAMPLER RECOVERY

Gas .76 ColuFl ML  
 Oil --- ML  
 Mud ~~---~~ Trace ML  
 Water 1715 ML  
 Other --- ML  
 Pressure 222 PSI ML  
 Total 1715 ML

### PIT MUD ANALYSIS

Chlorides 800 ppm.  
 Resistivity N.C. ohms @ --- F  
 Viscosity 82  
 Mud Weight 8.7  
 Filtrate 6.4 cc  
 Other LCM 4<sup>th</sup> / 800

### SAMPLER ANALYSIS

Resistivity .075 ohms @ 65 F  
 Chlorides 125,000 ppm.  
 Gravity N/A corrected @60F

### PIPE RECOVERY

**TOP** 378 GIP  
 Resistivity 65 ohms @ --- F  
 Chlorides --- ppm.  
**MIDDLE** 20' Delay Mud.  
 Resistivity N/A ohms @ --- F  
 Chlorides N.C. ppm.  
**BOTTOM** 62' S.W.  
 Resistivity .075 ohms @ 65 F  
 Chlorides 125,000 ppm.





# TRILOBITE TESTING INC.

1515 Commerce Parkway • Hays, Kansas 67601

## Test Ticket

NO. 59778

Well Name & No. BNE # 19-22 Test No. 2 Date 5-25-15  
 Company STRATAKAN EXPL. LLC Elevation 1788 KB 1778 GL  
 Address 204 W. MILL, PLAINVILLE KS. 67663  
 Co. Rep / Geo. CHRIS BEAN Rig SOUTHWIND DIRIG #1  
 Location: Sec. 19 Twp. 17S Rge. 9W Co. ENSWORTH State Ks.

Interval Tested 2487-2513' Zone Tested SEVERY SHALES  
 Anchor Length 26' Drill Pipe Run 2479' Mud Wt. 8.9  
 Top Packer Depth 2482' Drill Collars Run 0 Vis 48  
 Bottom Packer Depth 2487' Wt. Pipe Run 0 WL 8.0  
 Total Depth 2513' Chlorides 4,000 ppm System LCM 2#

Blow Description IF: Strong blow. GTS in 2 mins. (see gas flow report)  
ISI: No blow.  
FF: Strong blow. (see gas flow report) FSI: Weak blow. 1-3"

Rec	Feet of	%gas	%oil	%water	%mud
<u>40</u>	<u>Dry. Mud.</u>				
Rec	Feet of	%gas	%oil	%water	%mud
Rec	Feet of	%gas	%oil	%water	%mud
Rec	Feet of	%gas	%oil	%water	%mud

Rec Total 40 Fluid BHT 92° Gravity N/A API RW NC. @ — °F Chlorides 4,000 ppm

(A) Initial Hydrostatic <u>1196</u>	<input checked="" type="checkbox"/> Test <u>1050</u>	T-On Location <u>0900</u>
(B) First Initial Flow <u>180</u>	<input checked="" type="checkbox"/> Jars <u>250</u>	T-Started <u>0927</u>
(C) First Final Flow <u>168</u>	<input checked="" type="checkbox"/> Safety Joint <u>75</u>	T-Open <u>1046</u>
(D) Initial Shut-In <u>795</u>	<input type="checkbox"/> Circ Sub	T-Pulled <u>1309</u>
(E) Second Initial Flow <u>190</u>	<input type="checkbox"/> Hourly Standby <u>63</u>	T-Out <u>1530</u>
(F) Second Final Flow <u>144</u>	<input checked="" type="checkbox"/> Mileage <u>63 FROM GT. BEAN</u>	Comments <u>* STAYED IN MOTEL (X1)</u>
(G) Final Shut-In <u>769</u>	<input checked="" type="checkbox"/> Sampler <u>250</u>	
(H) Final Hydrostatic <u>1185</u>	<input type="checkbox"/> Straddle	<input type="checkbox"/> Ruined Shale Packer

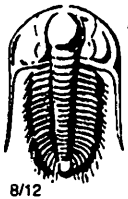
Initial Open 15  
 Initial Shut-In 30  
 Final Flow 30  
 Final Shut-In 60

Sub Total 1688

MP/DST Disc't \_\_\_\_\_

Approved By \_\_\_\_\_ Our Representative Chris Bean

Trilobite Testing Inc. shall not be liable for damaged of any kind of the property or personnel of the one for whom a test is made, or for any loss suffered or sustained, directly or indirectly, through the use of its equipment, or its statements or opinion concerning the results of any test, tools lost or damaged in the hole shall be paid for at cost by the party for whom the test is made.



# TRILOBITE TESTING INC.

1515 Commerce Parkway • Hays, Kansas 67601

## Gas Volume Report

STRATAKAN EXPL

BNE # 19-22

2

Operator  
INITIAL OPEN

Well Name and No.

FINAL OPEN

DST No.

Min.	Ins. of Water PSIG	Orifice Size	M <sup>3</sup> CF/D	Min.	Ins. of Water PSIG	Orifice Size	M <sup>3</sup> CF/D
<u>2</u>	<u>~</u>	<u>1/2"</u>	<u>GTS</u>	<u>10</u>	<u>46 PSI</u>	<u>3/4"</u>	<u>943</u>
<u>10</u>	<u>43 PSI</u>	<u>3/4"</u>	<u>897</u>	<u>20</u>	<u>44 PSI</u>	<u>3/4"</u>	<u>912</u>
<u>15</u>	<u>45 PSI</u>	<u>3/4"</u>	<u>928</u>	<u>30</u>	<u>41 PSI</u>	<u>3/4"</u>	<u>865</u>

Remarks:





# TRILOBITE TESTING, INC.

P.O. Box 362 • Hays, Kansas 67601

## FLUID SAMPLER DATA

Ticket No. 59778 Date 5-25-13

Company Name STRATAKAN EXPL.

Lease BNE # 19-22 Test No. 2

County ELLSWORTH KS. Sec. 19 Twp. 17<sup>s</sup> Rng. 9w

### SAMPLER RECOVERY

Gas 9.7 cubic ft. ML

Oil ~ ML

Mud 100 ML

Water ~ ML

Other cuttings ML

Pressure 290 PSI. ML

Total \_\_\_\_\_ ML

### PIT MUD ANALYSIS

Chlorides 4,000 ppm.

Resistivity NC. ohms @ ~ F

Viscosity 48

Mud Weight 8.9

Filtrate 8.0cc

Other LCM 2<sup>#</sup> / BBL

### SAMPLER ANALYSIS

Resistivity N/A ohms @ ~ F

Chlorides N/A ppm.

Gravity N/A corrected @60F

### PIPE RECOVERY

**TOP**  
Resistivity \_\_\_\_\_ ohms @ \_\_\_\_\_ F

Chlorides \_\_\_\_\_ ppm.

**MIDDLE**  
Resistivity \_\_\_\_\_ ohms @ \_\_\_\_\_ F

Chlorides \_\_\_\_\_ ppm.

**BOTTOM**  
Resistivity \_\_\_\_\_ ohms @ \_\_\_\_\_ F  
40" of Dirty Mud.

Chlorides \_\_\_\_\_ ppm.



# TRILOBITE TESTING INC.

1515 Commerce Parkway • Hays, Kansas 67601

## Test Ticket

NO. **63032**

Well Name & No. BNE #19-20 Test No. 3 Date 26 MAY 15  
 Company Stratagan Exploration LLC Elevation 1788 KB 1778 GL  
 Address 204 W Mill, Plainville Kansas 67663  
 Co. Rep / Geo. Chris Bean Rig Southwind Rig #2  
 Location: Sec. 19 Twp. 17S Rge. 9W Co. Ellsworth State KS

Interval Tested 3080-3103 Zone Tested Lansing/Kansas City zone J  
 Anchor Length 23 Drill Pipe Run 3081 Mud Wt. 9.2  
 Top Packer Depth 3075 Drill Collars Run 0 Vis 53  
 Bottom Packer Depth 3080 Wt. Pipe Run 0 WL 7.2  
 Total Depth 3103 Chlorides 4000 ppm System LCM 2#

Blow Description Weak blow / Blow built to 1/4 inch then started to die after 25 min  
No blow back  
Weak surface blow / Blow died after 10 minutes  
No blow back

Rec	Feet of	%gas	%oil	%water	%mud
<u>10</u>	<u>Mud with show of oil</u>			<u>100</u>	
Rec	Feet of	%gas	%oil	%water	%mud
Rec	Feet of	%gas	%oil	%water	%mud
Rec	Feet of	%gas	%oil	%water	%mud
Rec	Feet of	%gas	%oil	%water	%mud

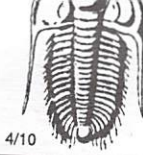
Rec Total 10 BHT 106 Gravity \_\_\_\_\_ API RW \_\_\_\_\_ @ \_\_\_\_\_ °F Chlorides \_\_\_\_\_ ppm

(A) Initial Hydrostatic 1531  Test 1050 T-On Location 9:19 pm  
 (B) First Initial Flow 14  Jars 250 T-Started 9:52 pm  
 (C) First Final Flow 20  Safety Joint 75 T-Open 11:07 pm  
 (D) Initial Shut-In 326  Circ Sub \_\_\_\_\_ T-Pulled 12:37 am  
 (E) Second Initial Flow 20  Hourly Standby \_\_\_\_\_ T-Out 1:44 am  
 (F) Second Final Flow 19  Mileage 64 63 Comments \_\_\_\_\_  
 (G) Final Shut-In 638  Sampler \_\_\_\_\_  
 (H) Final Hydrostatic 1516  Straddle \_\_\_\_\_  
 Shale Packer \_\_\_\_\_  
 Ruined Shale Packer \_\_\_\_\_  
 Ruined Packer \_\_\_\_\_

Initial Open 30  Extra Packer \_\_\_\_\_  
 Initial Shut-In 15  Extra Recorder \_\_\_\_\_  
 Final Flow 15  Day Standby \_\_\_\_\_  
 Final Shut-In 30  Accessibility \_\_\_\_\_  
 Sub Total 1438 MP/DST Disc't \_\_\_\_\_

Approved By \_\_\_\_\_ Our Representative [Signature]

Trilobite Testing Inc. shall not be liable for damaged of any kind of the property or personnel of the one for whom a test is made, or for any loss suffered or sustained, directly or indirectly, through the use of its equipment, or its statements or opinion concerning the results of any test, tools lost or damaged in the hole shall be paid for at cost by the party for whom the test is made.



# TRILOBITE TESTING INC.

1515 Commerce Parkway • Hays, Kansas 67601

## Test Ticket

NO. 63033

Well Name & No. BNE #19-20 Test No. 4 Date 27 MAY.  
 Company Stratokan Exploration LLC Elevation 1788 KB 1778  
 Address 204 W Mill Plainville Kansas 67663  
 Co. Rep / Geo. Chris Bean Rig Southwind Rig #1  
 Location: Sec. 19 Twp. 17S Rge. 9W Co. Ellsworth State KS

Interval Tested 3220-3227 Zone Tested Arbuckle  
 Anchor Length 7 Drill Pipe Run 3208 Mud Wt. 9.3  
 Top Packer Depth 3215 Drill Collars Run 0 Vis 54  
 Bottom Packer Depth 3220 Wt. Pipe Run 0 WL 8.0  
 Total Depth 3227 Chlorides 4000 ppm System LCM 2.5 #

Blow Description Good blow/Blow built to 11 inches  
light surface blowback throughout  
Good blow/Blow built to bottom of bucket in 14 minutes  
Very light surface blowback throughout

Rec	Feet of	%gas	%oil	%water
<u>449</u>	<u>Gas in Pipe</u>	<u>100</u>		
<del>10</del>	<del>Feet of</del>	<del>%gas</del>	<del>%oil</del>	<del>%water</del>
<u>15</u>	<u>Water cut muddy gassy Emuls. P. oil</u>	<u>20</u>	<u>50</u>	<u>10</u>
<u>93</u>	<u>Slightly mud cut gassy Oil</u>	<u>10</u>	<u>85</u>	<u>5</u>

Rec Total 108 BHT 109 Gravity 44 API RW @ °F Chlorides

(A) Initial Hydrostatic 1659  Test 1050 T-On Location 3:05 pm  
 (B) First Initial Flow 16  Jars 250 T-Started 5:00 pm  
 (C) First Final Flow 20  Safety Joint 75 T-Open 6:17 pm  
 (D) Initial Shut-In 993  Circ Sub \_\_\_\_\_ T-Pulled 9:02 pm  
 (E) Second Initial Flow 21  Hourly Standby \_\_\_\_\_ T-Out 10:39 pm  
 (F) Second Final Flow 43  Mileage 64 63 Comments \_\_\_\_\_  
 (G) Final Shut-In 881  Sampler \_\_\_\_\_  
 (H) Final Hydrostatic 1595  Straddle \_\_\_\_\_  Ruined Shale Packer \_\_\_\_\_  
 Shale Packer \_\_\_\_\_  Ruined Packer \_\_\_\_\_  
 Extra Packer \_\_\_\_\_  Extra Copies \_\_\_\_\_  
 Extra Recorder \_\_\_\_\_ Sub Total 0  
 Day Standby \_\_\_\_\_ Total 1438  
 Accessibility \_\_\_\_\_ MP/DST Disc't \_\_\_\_\_  
 Sub Total 1438

Initial Open 15  
 Initial Shut-In 30  
 Final Flow 60  
 Final Shut-In 60

Approved By \_\_\_\_\_ Our Representative [Signature]  
 Trilobite Testing Inc. shall not be liable for damaged of any kind of the property or personnel of the one for whom a test is made, or for any loss suffered or sustained, directly or indirectly, through the use of its equipment, or its statements or opinion concerning the results of any test, tools lost or damaged in the hole shall be paid for at cost by the party for whom the test is made.