



Current

Spud: 6/14/2014

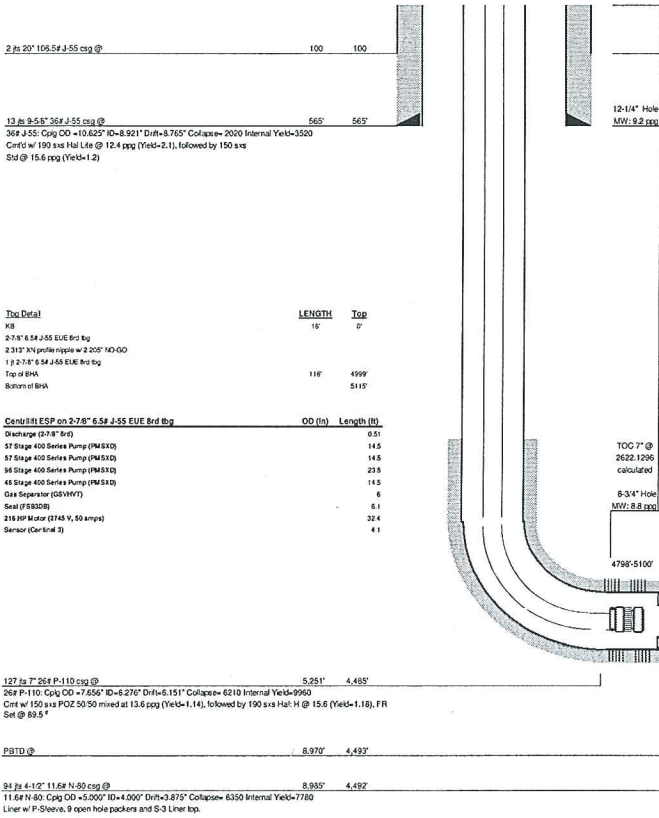
Field: Gerberding
 County: Sumner
 State: KS
 Well: SUBERA 3404 2-18H
 SH Location: SEC 18, TWP 34S, RNG 4W
 Elevations: 1248' KB; 1232' GL

Wellbore Schematic

15-101-22753
 API No.

Original Completion	<input type="checkbox"/>
Current	<input checked="" type="checkbox"/>
Workover	<input type="checkbox"/>
Proposed	<input type="checkbox"/>

Well Bore Data



Top Detail

LENGTH	Top
15'	0'
116'	499'
	511'

Casing/EOP on 2-7/8" 6.5# J-55 EUE End Bg

OD (in)	Length (ft)
	0.51
	14.5
	14.5
	23.5
	14.5
	6
	6.1
	22.4
	4.1

lead	tail
150 sxs	190 sxs
1.14 yield	1.18 yield
2622.1296 calculated	395.2 total ft ³
	6.652 conversion
	2628.87 linear ft of cmt coverage behind 7"

127 1/2" 20# P-110 Csg @

MD	TVD
5,251'	4,485'

20# P-110 Csg OD = 7.850" ID = 6.270" DRH = 6.151" Collapse = 6310 Internal Yield = 9960 Cmt w/ 150 sxs POZ 50/50 mixed at 13.6 ppg (Yield = 1.14), followed by 190 sxs Hal H @ 15.8 (Yield = 1.18), FR Set @ 89.5'

FBTD @

MD	TVD
8,970'	4,492'

81 1/2" 4-1/2" 11.6# N-80 Csg @

MD	TVD
8,935'	4,492'

11.6# N-80 Csg OD = 5.000" ID = 4.000" DRH = 3.875" Collapse = 6350 Internal Yield = 7780 Liner w/ P-Sleeve, 9 open hole packers and S-3 Liner top.