

**CHARLES SCHMALTZ**  
CONSULTING GEOLOGIST  
WICHITA, KANSAS

REPORT LOG

COMPANY: **MUSEUM DRILLING CO., INC.**  
WELL: **FRISBIE #1 #2-6**

LOCATION: **BRUHN NORTHEAST**  
FIELD: **2005 FSL 2150 FEL**

PRODUCTION: **3313**  
SEC: **6** TWP: **25** R. **36 W**  
COUNTY: **RAWLINS**  
STATE: **KANSAS**

LAND OWNERS: **WILLIAM D. MULLIN, JR. & SONS**  
ADDRESS: **15 MAIN ST. LAWRENCE, MO. 64503**  
OWNER: **WILLIAM D. MULLIN, JR. & SONS**  
DATE: **5/12/67**

LOG NUMBER: **4490**  
TRAIL HEAD: **4490**

FORMATION TOPS & STRUCTURAL POSITIONS

FORMATION	DEPTH	ELEVATION	STR. POS.	STRUCTURAL POSITION
ANHYDRITE - TOP	3246	3246	4-10	
ANHYDRITE - BASE	3279	3279	4-10	
NEVA	3181	3181	4-10	
FORAKER	3086	3086	4-10	
TOPEKA	4185	4185	4-10	
LANESING	4191	4191	4-10	
STARK	4491	4491	4-10	
BKC	4543	4543	4-10	
PAWNEE	4667	4667	4-10	
CHEEROCKE	4745	4745	4-10	
TOTAL DEPTH	4800	4800	4-10	

REFERENCE WELL FOR STRUCTURE: **MUSEUM DRILLING CO. LOG FRISBIE #1 #1-6**  
210 FSL, 350 FEL, SEC. 6, T. 25, R. 36 W, RAWLINS CO., KS

**DRILL STEEL TESTS**

NO.	DEPTH	HTC	DPH	DPH	DPH	HTC	REMARKS
1	4190	14" T	28"	15" (8")	25"	1910° F	5' MUD
2	4185	45" T	115"	106" (31")	115"	1910° F	20' MUD, 18' SHTMCM
3	4180	45" T	115"	106" (31")	115"	1910° F	18' SHTMCM
4	4172	45" T	115"	106" (31")	115"	1910° F	18' SHTMCM
5	4170	45" T	115"	106" (31")	115"	1910° F	18' SHTMCM
6	4165	45" T	115"	106" (31")	115"	1910° F	18' SHTMCM
7	4160	45" T	115"	106" (31")	115"	1910° F	18' SHTMCM
8	4155	45" T	115"	106" (31")	115"	1910° F	18' SHTMCM
9	4150	45" T	115"	106" (31")	115"	1910° F	18' SHTMCM
10	4145	45" T	115"	106" (31")	115"	1910° F	18' SHTMCM
11	4140	45" T	115"	106" (31")	115"	1910° F	18' SHTMCM
12	4135	45" T	115"	106" (31")	115"	1910° F	18' SHTMCM
13	4130	45" T	115"	106" (31")	115"	1910° F	18' SHTMCM
14	4125	45" T	115"	106" (31")	115"	1910° F	18' SHTMCM
15	4120	45" T	115"	106" (31")	115"	1910° F	18' SHTMCM
16	4115	45" T	115"	106" (31")	115"	1910° F	18' SHTMCM
17	4110	45" T	115"	106" (31")	115"	1910° F	18' SHTMCM
18	4105	45" T	115"	106" (31")	115"	1910° F	18' SHTMCM
19	4100	45" T	115"	106" (31")	115"	1910° F	18' SHTMCM
20	4095	45" T	115"	106" (31")	115"	1910° F	18' SHTMCM
21	4090	45" T	115"	106" (31")	115"	1910° F	18' SHTMCM
22	4085	45" T	115"	106" (31")	115"	1910° F	18' SHTMCM
23	4080	45" T	115"	106" (31")	115"	1910° F	18' SHTMCM
24	4075	45" T	115"	106" (31")	115"	1910° F	18' SHTMCM
25	4070	45" T	115"	106" (31")	115"	1910° F	18' SHTMCM
26	4065	45" T	115"	106" (31")	115"	1910° F	18' SHTMCM
27	4060	45" T	115"	106" (31")	115"	1910° F	18' SHTMCM
28	4055	45" T	115"	106" (31")	115"	1910° F	18' SHTMCM
29	4050	45" T	115"	106" (31")	115"	1910° F	18' SHTMCM
30	4045	45" T	115"	106" (31")	115"	1910° F	18' SHTMCM
31	4040	45" T	115"	106" (31")	115"	1910° F	18' SHTMCM
32	4035	45" T	115"	106" (31")	115"	1910° F	18' SHTMCM
33	4030	45" T	115"	106" (31")	115"	1910° F	18' SHTMCM
34	4025	45" T	115"	106" (31")	115"	1910° F	18' SHTMCM
35	4020	45" T	115"	106" (31")	115"	1910° F	18' SHTMCM
36	4015	45" T	115"	106" (31")	115"	1910° F	18' SHTMCM
37	4010	45" T	115"	106" (31")	115"	1910° F	18' SHTMCM
38	4005	45" T	115"	106" (31")	115"	1910° F	18' SHTMCM
39	4000	45" T	115"	106" (31")	115"	1910° F	18' SHTMCM

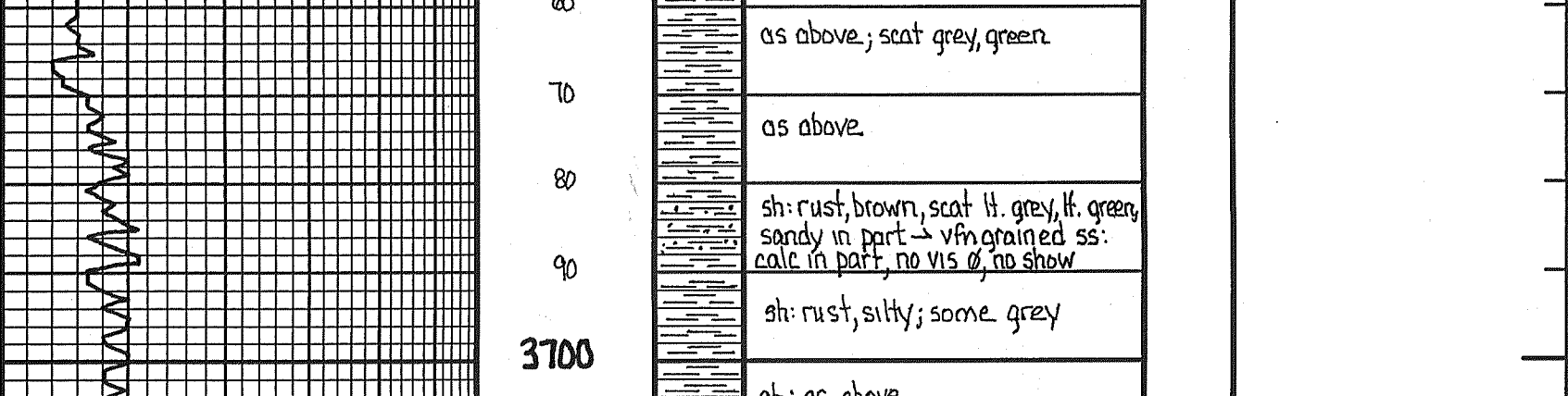
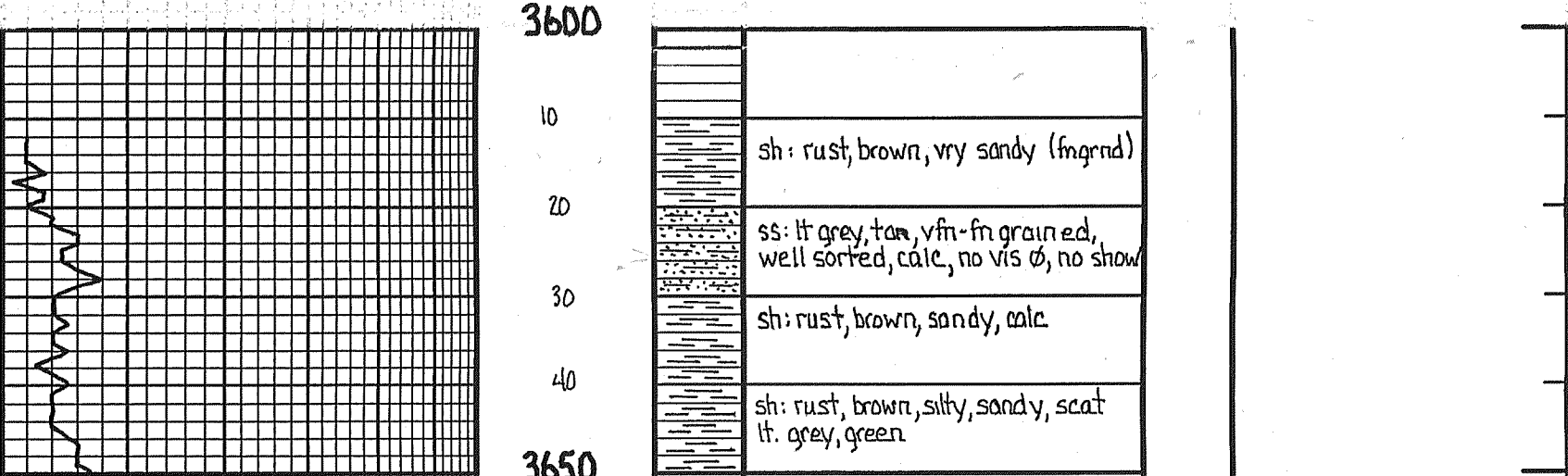
**LOG DATA**

NO.	SIZE	MAKE	TYPE	DEPTH	FEET	HOURS	PIPE STRAIN	REMARKS
1	1 1/4"	HTC	DPH	305	2 1/2		305' @ 31.1" DIA. SUCT	
2	1 1/8"	HTC	DPH	4800	289 1/2		4800' @ 41.0" DIA. SUCT	

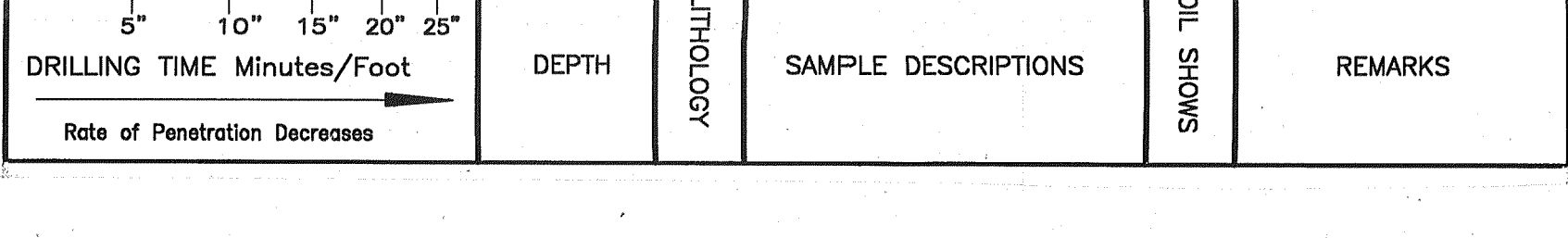
**FORMATION TOPS & STRUCTURAL POSITIONS**

FORMATION	DEPTH	ELEVATION	STR. POS.	STRUCTURAL POSITION
ANHYDRITE - TOP	3246	3246	4-10	
ANHYDRITE - BASE	3279	3279	4-10	
NEVA	3181	3181	4-10	
FORAKER	3086	3086	4-10	
TOPEKA	4185	4185	4-10	
LANESING	4191	4191	4-10	
STARK	4491	4491	4-10	
BKC	4543	4543	4-10	
PAWNEE	4667	4667	4-10	
CHEEROCKE	4745	4745	4-10	
TOTAL DEPTH	4800	4800	4-10	

**LEGEND**



DEPTH	LITHOLOGY	SAMPLE DESCRIPTIONS	REMARKS
3200			ANHYDRITE - TOP (497)
3250			ANHYDRITE - BASE (474)
3600		sh: rusty brown, vry sandy (fragrd)	
3650		ss: lt grey, tan, vfn-fn grain ed, well sorted, calc, no vis 0, no show	
3700		sh: rust, brown, sandy, calc	
3750		sh: rust, brown, silty, sandy, scat lt. grey, green	
3800		sh: rust, brown, sandy, calc in pt	
3850		as above; scat grey, green	
3900		as above	
3950		sh: rust, brown, scat lt. grey, lt. green, sandy in part, no vfn-fn, no ss; calc in part, no vis 0, no show	
4000		sh: rust, silty, some grey	
4050		sh: as above	
4100		sh: rust, brown, silty, sandy -> ss: rust (shale matrix), fragrd, no vis 0, no show	
4150		sh: rust, brown, silty, sandy; scat grey sh	
4200		ls: offwh tan, fr-med xtn, silty, v. sh. foss. sh. chalc. no vis 0, no show	
4250		sh: rust, brown, silty, some grey	
4300		sh: as above	
4350		sh: rust, brown, silty, sandy -> ss: rust (shale matrix), fragrd, no vis 0, no show	
4400		sh: rust, brown, silty, sandy; scat grey sh	
4450		ls: offwh tan, fr-med xtn, silty, v. sh. foss. sh. chalc. no vis 0, no show	
4500		sh: rust, brown, silty, some grey	
4550		sh: as above	
4600		sh: rust, brown, silty, sandy -> ss: rust (shale matrix), fragrd, no vis 0, no show	
4650		sh: rust, brown, silty, sandy; scat grey sh	
4700		ls: offwh tan, fr-med xtn, silty, v. sh. foss. sh. chalc. no vis 0, no show	
4750		sh: rust, brown, silty, some grey	
4800		sh: as above	



LOG 7710