

GEOLOGIC REPORT

DAVID J. GOLDAK

WICHITA, KANSAS
Scale 1:240 (5"=100') Imperial
Measured Depth Log

Well Name: Ellis #3-12
Location: Section 12 - T17S - R33W
License Number: API: 15-171-21144
Spud Date: 08 / 07 / 2015
Surface Coordinates: 2305' FNL and 1939' FWL
NE - SW - SE - NW
Region: Scott Co., KS
Drilling Completed: 08 / 14 / 2015
Bottom Hole Coordinates:
Ground Elevation (ft): 2980' K.B. Elevation (ft): 2993'
Logged Interval (ft): 3700' To: 4810' Total Depth (ft): 4810'
Formation: Mississippian - St Louis
Type of Drilling Fluid: Chemical - Mud-Co

Printed by MUD.LOG from WellSight Systems 1-800-447-1534 www.WellSight.com

OPERATOR

Company: Stelbar Oil Corporation
Address: 1625 N. Waterfront Pkwy., Suite 200
Wichita, Kansas 67206-6602

GEOLOGIST

Name: David J. Goldak
Company: D. J. GOLDAK, INC.
Address: 155 N. Market, Suite 710
Wichita, Kansas 67202

General Info

CONTRACTOR: Sterling Drilling, Rig #5

BIT RECORD:

No.	Size	Make	Jets	Out	Feet	Hours
1	12-1/4	JZ-HAOTC	3-16s	319	319	2.25
2	7-7/8	JZ-HAIPG	3-15s	371	52	0.50
3	7-7/8	Ulterra-U516M	5-15s	4810	4439	66.75

SURVEYS: 319'-0.25, 3510'-1.00, 4484'-1.00, 4810'-0.75

GENERAL DRILLING & PUMP INFORMATION:

Drilling with 14,000-17,000 lbs on bit and 90-100 RPM.
Drilling with 9 stands of collars (6.25"x2.25"): 536.21'
Pumping 60-66 S/M; 9.2-10.2 B/M; 900-1000 psi at standpipe.

Daily Status

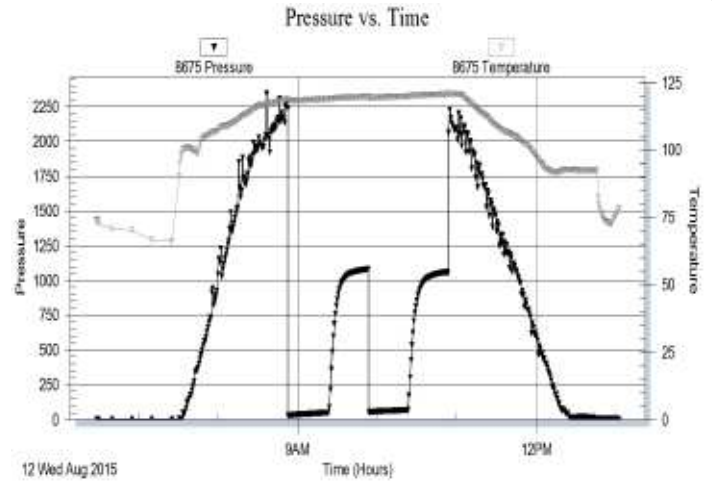
08/07/15 - Spud at 7:30 PM; Set 8-5/8" csg at 314'
08/08/15 - 319' WOC; DP at 12:30 PM; Bit trip at 371'
09/09/15 - 2,353' Drilling; Displace mud @ 3,000'; ST @ 3,510'
08/10/15 - 3,580' Drilling
08/11/15 - 4,263' Drilling; Wiper trip @ 4,330'; Bit trip @ 4,397'
08/12/15 - 4,484' Prep for DST #1
08/13/15 - 4,665' DST #2 in progress; Log well
08/14/15 - 4,810' DST #3 in progress

DST #1: 4,354' - 4,484' (Pleasanton & Marmaton)
30" - 30" - 30" - 30"

IF: Weak blow building to 1-1/4 inches
ISI: No blow back
FF: No blow
FSI: No blow back

RECOVERY: 75' Total Fluid, consisting of:
75' Mud (100% M)
Sampler: 1000 ml Mud @ 75 psi

SIP: 1082-1062; FP: 29-51, 55-68; HP: 2236-2061; BHT: 121

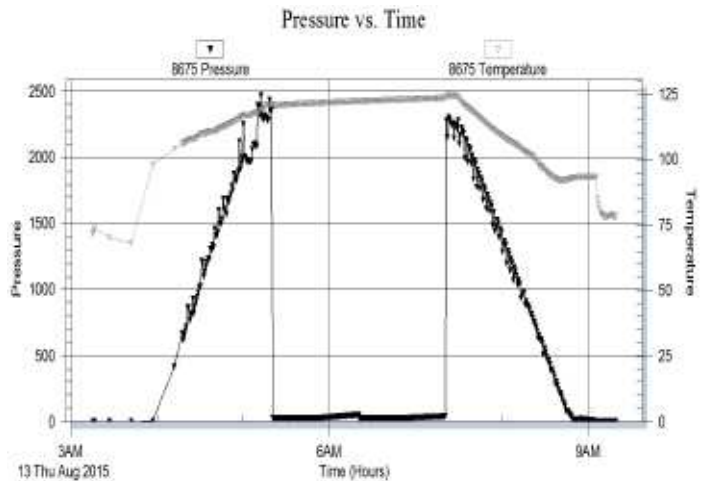


DST #2: 4,600' - 4,665' (Johnson Zone)
30" - 30" - 30" - 30"

IF: Weak blow building to 1/4 inch
ISI: No blow back
FF: No blow
FSI: No blow back

RECOVERY: 10' Total Fluid, consisting of:
10' OSM (100% M)
Sampler: 1000 ml OSM @ 25 psi

SIP: 53-40; FP: 28-28, 29-28; HP: 2255-2295; BHT: 124

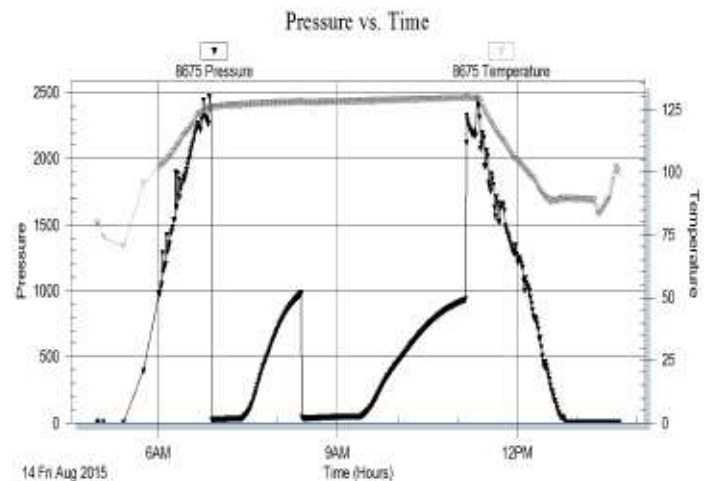


DST #3: 4,718' - 4,740' (Mississippian ?)
(Straddle test) 30" - 60" - 60" - 90"

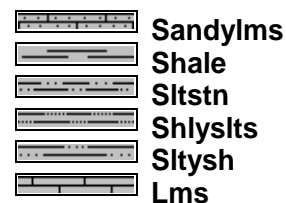
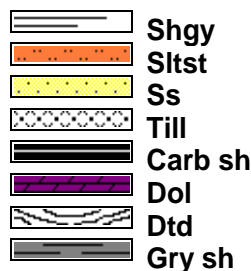
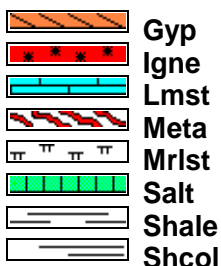
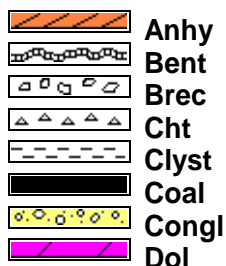
IF: Weak blow building to 3-3/4 inches
ISI: No blow back
FF: Fair blow building to BOB in 48 minutes
FSI: No blow back

RECOVERY: 292' GIP & 80' TF, consisting of:
40' GCO (10% G, 90% O); Gravity: 25 API
40' OCM (10% O, 90% M)
Sampler: 1500 ml Oil @ 150 psi

SIP: 975-935; FP: 24-33, 39-49; HP: 2381-2321; BHT: 129



ROCK TYPES

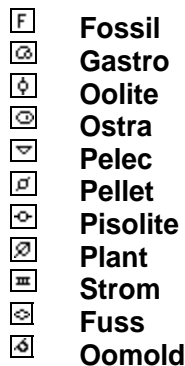
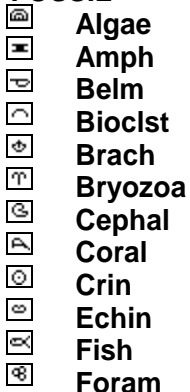


ACCESSORIES

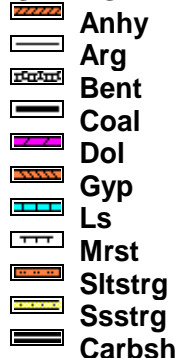
MINERAL



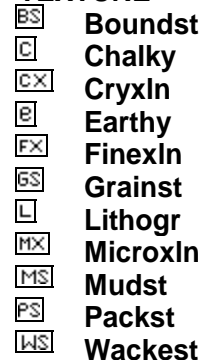
FOSSIL



STRINGER

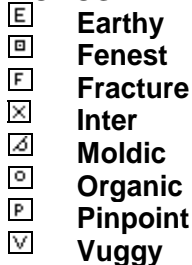


TEXTURE



OTHER SYMBOLS

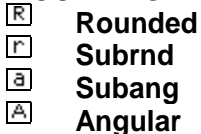
POROSITY TYPE



SORTING



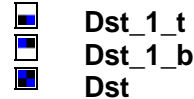
ROUNDING



OIL SHOWS

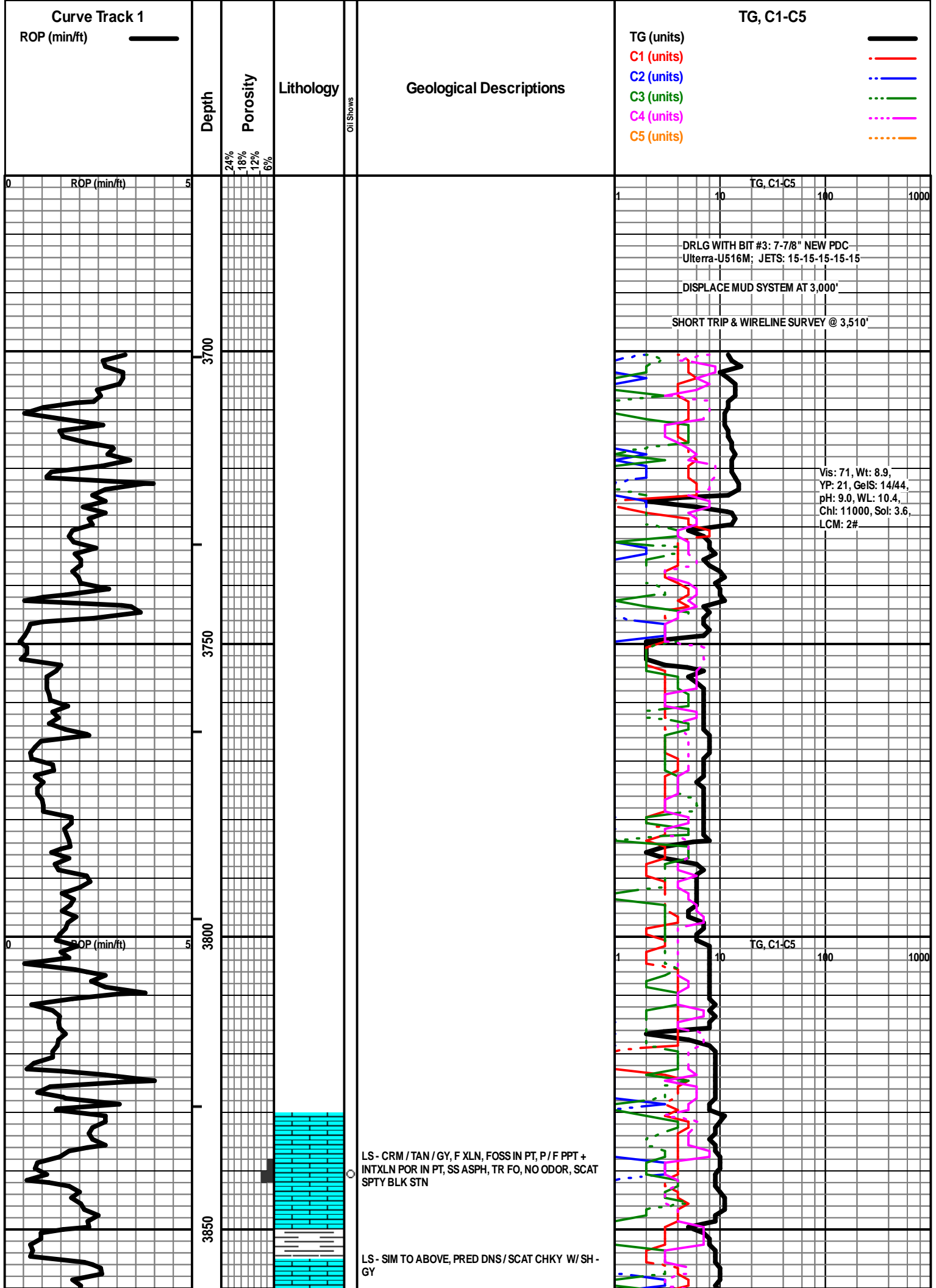


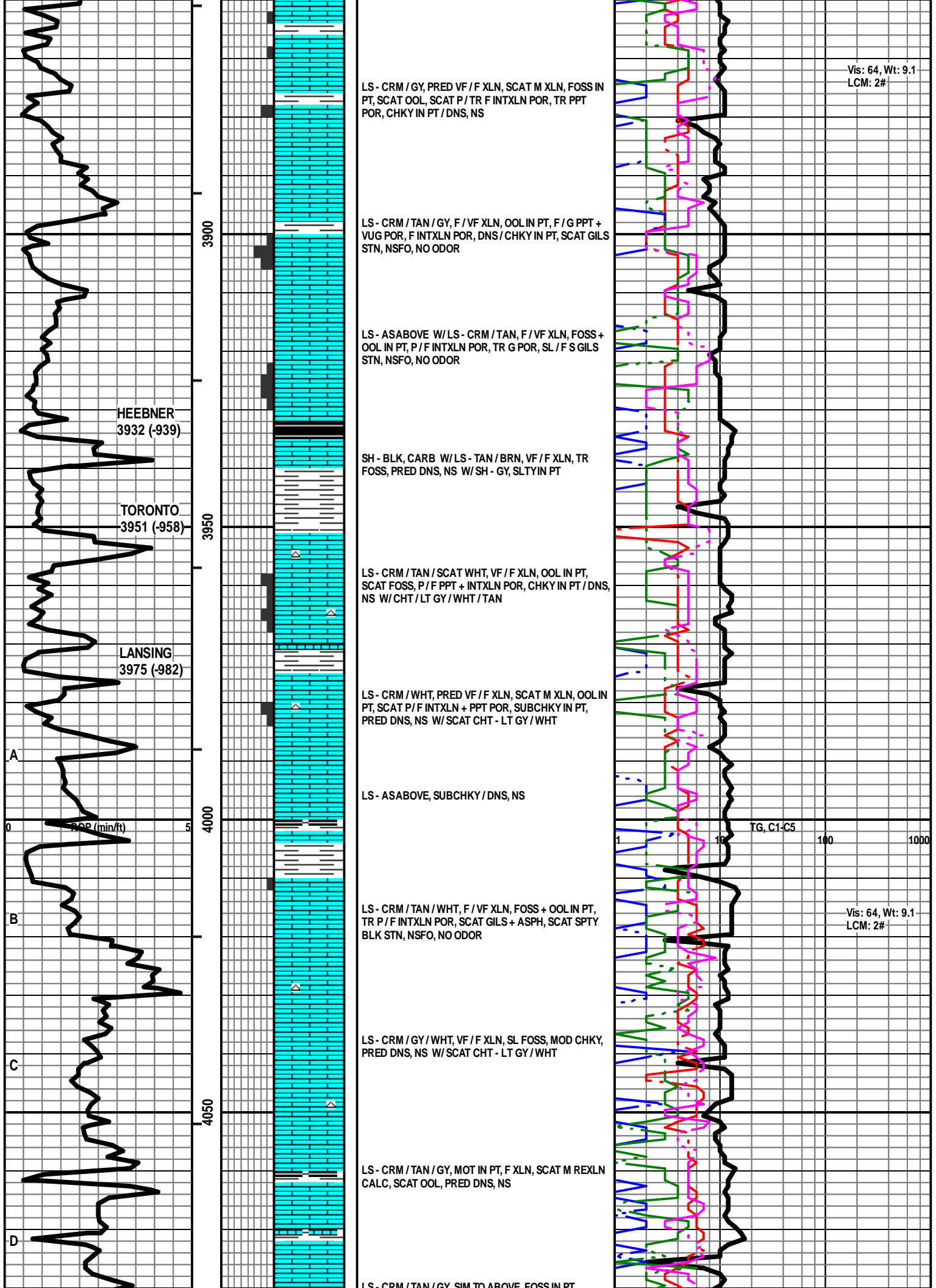
INTERVALS



EVENTS







Vis: 64, Wt: 9.1
LCM: 2#

LS - CRM / GY, PRED VF / F XLN, SCAT M XLN, FOSS IN PT, SCAT OOL, SCAT P / TR F INTXLN POR, TR PPT POR, CHKY IN PT / DNS, NS

LS - CRM / TAN / GY, F / VF XLN, OOL IN PT, F / G PPT + VUG POR, F INTXLN POR, DNS / CHKY IN PT, SCAT GILS STN, NSFO, NO ODOR

LS - ASABOVE W / LS - CRM / TAN, F / VF XLN, FOSS + OOL IN PT, P / F INTXLN POR, TR G POR, SL / F S GILS STN, NSFO, NO ODOR

SH - BLK, CARB W / LS - TAN / BRN, VF / F XLN, TR FOSS, PRED DNS, NS W / SH - GY, SLTY IN PT

LS - CRM / TAN / SCAT WHT, VF / F XLN, OOL IN PT, SCAT FOSS, P / F PPT + INTXLN POR, CHKY IN PT / DNS, NS W / CHT / LT GY / WHT / TAN

LS - CRM / WHT, PRED VF / F XLN, SCAT M XLN, OOL IN PT, SCAT P / F INTXLN + PPT POR, SUBCHKY IN PT, PRED DNS, NS W / SCAT CHT - LT GY / WHT

LS - ASABOVE, SUBCHKY / DNS, NS

LS - CRM / TAN / WHT, F / VF XLN, FOSS + OOL IN PT, TR P / F INTXLN POR, SCAT GILS + ASPH, SCAT SPTY BLK STN, NSFO, NO ODOR

LS - CRM / GY / WHT, VF / F XLN, SL FOSS, MOD CHKY, PRED DNS, NS W / SCAT CHT - LT GY / WHT

LS - CRM / TAN / GY, MOT IN PT, F XLN, SCAT M REXLN CALC, SCAT OOL, PRED DNS, NS

LS - CRM / TAN / GY SIM TO ABOVE FOSS IN PT

HEEBNER
3932 (-939)

TORONTO
3951 (-958)

LANSING
3975 (-982)

A

B

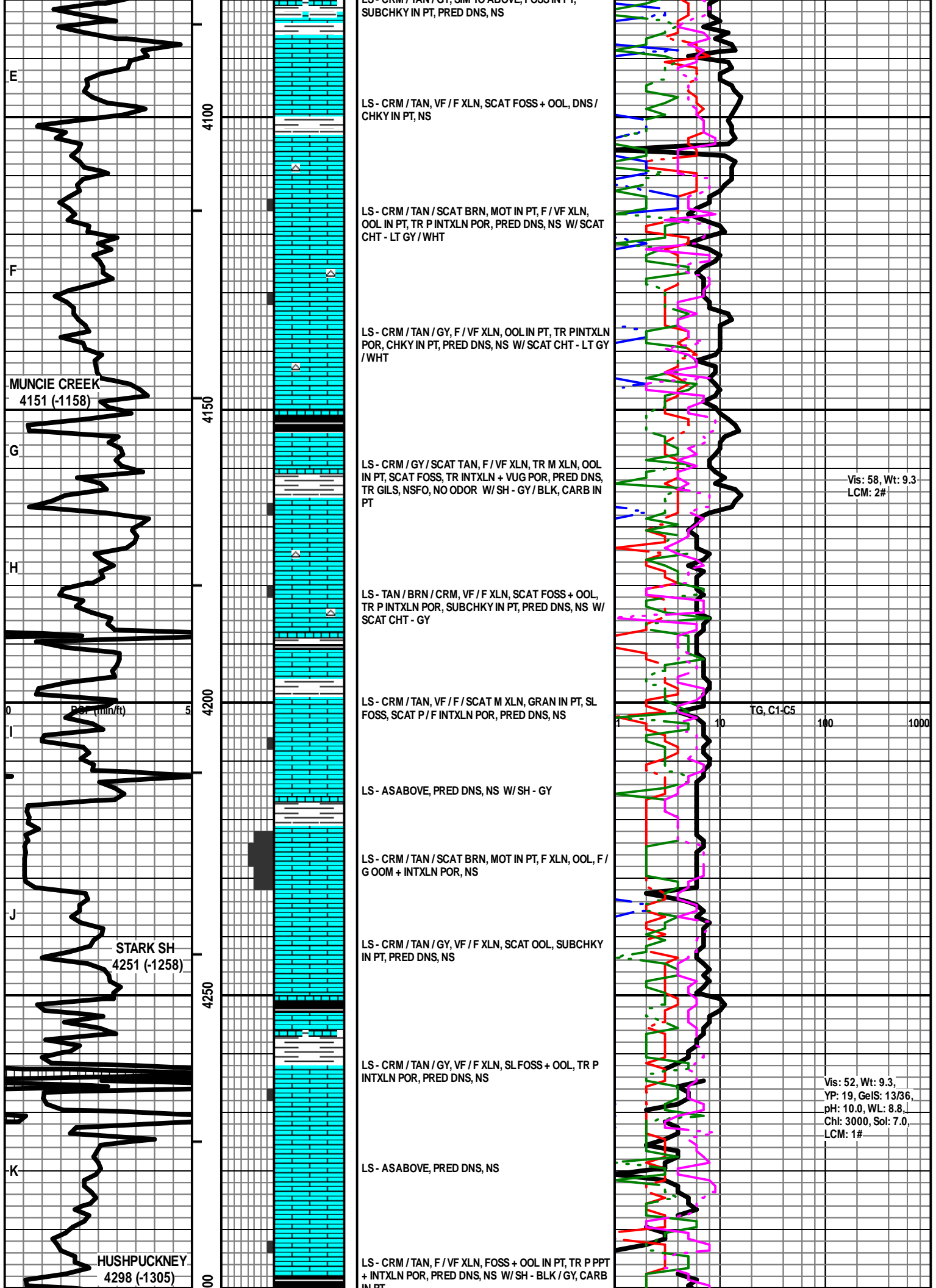
C

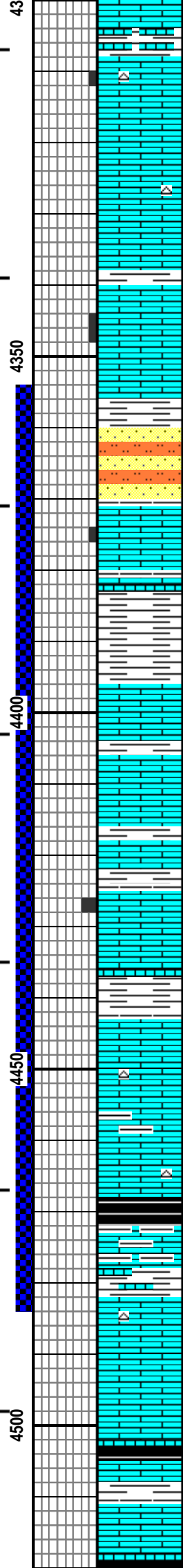
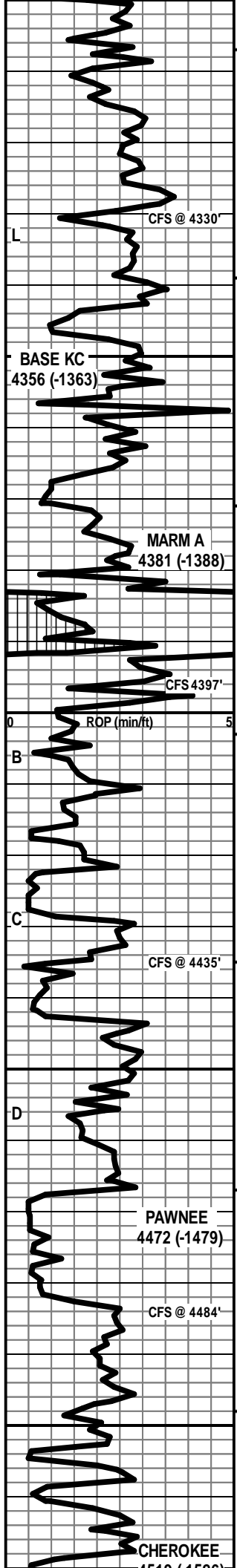
D

0 5
POR (min/ft)

TG, C1-C5
1 10 100 1000

Vis: 64, Wt: 9.1
LCM: 2#





LS - CRM / GY / SCAT TAN, VF / F XLN, OOL IN PT, SL FOSS, TR P INTXN POR, CHKY IN PT, PRED DNS, NS W / SCAT CHT - GY / WHT

LS - CRM / TAN / GY, F / VF XLN, SCAT OOL, P / F INTXN POR IN PT, PRED SUBCHKY / DNS, NS

LS - ASABOVE W / SH - GY / GRN W / SLTST + SS - LT / MED GY, SLT / VF QTZ GR, MIC, NS

LS - CRM / SCAT TAN, F / SCAT M XLN, OOL IN PT, SCAT P PPT + INTXN POR, SUBCHKY IN PT, SSFO, NO ODOR, SCAT SPTY STN, P / G FLUOR + CUT

LS - ASABOVE W / SH - GY / GRN W / TR LS - GY / TAN, MOT, F XLN, OOL, PRED DNS, NS

LS - TAN / CRM / GY, F / VF XLN, FOSS + OOL IN PT, SUBCHKY IN PT, PRED DNS, NS

LS - TAN / CRM, F / SCAT M XLN, SL FOSS, F INTXN + PPT POR IN PT, TR VUG POR, TR FO, NO ODOR, TR SPTY STN, NO / TR P FLUOR, NO CUT

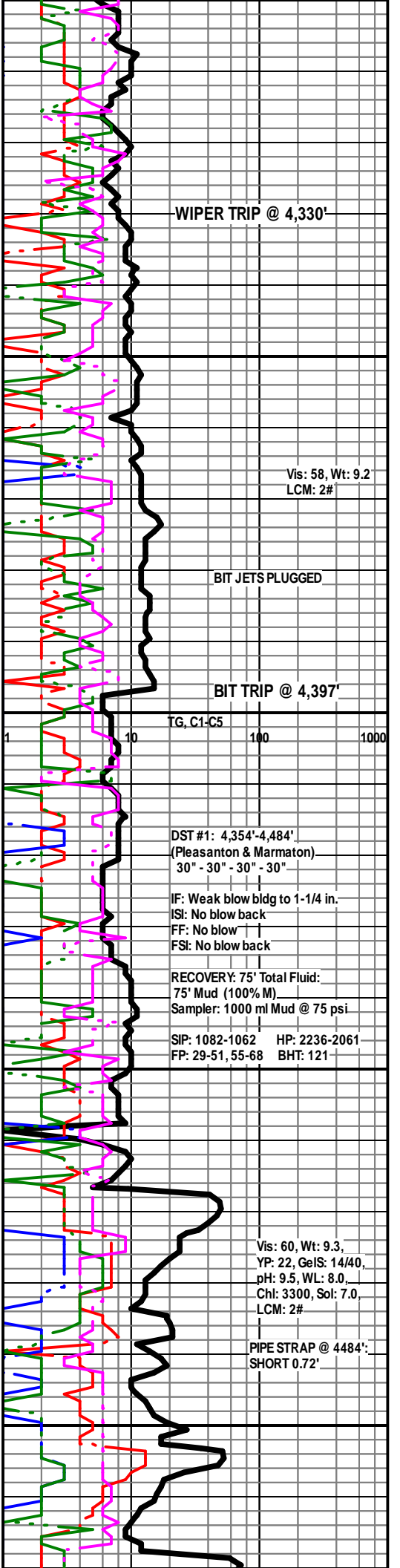
LS - TAN / BRN, MOT IN PT, VF / F XLN, SCAT CRYPTO XLN, OOL IN PT, SL FOSS, PRED DNS, NS W / SCAT CHT - GY / TAN

LS - ASABOVE, NS

SH - BLK, CARB W / LS - CRM / TAN, VF / F XLN, OOL IN PT, ARGIL IN PT, PRED DNS, NS W / SH - GY / GRN W / SCAT CHT - LT GY

LS - CRM / TAN / SCAT BRN, VF / F XLN, SCAT CRYPTO XLN, FOSS IN PT, SCAT OOL, PRED DNS, NS W / SH - BLK, CARB

LS - CRM / TAN / BRN, VF / F XLN, FOSS + OOL IN PT, SUBCHKY IN PT, PRED DNS, NS W / SH - BLK / GY / GRN



4519 (-1526)

4550

LS - TAN / BRN / GY, MOT IN PT, VF / F XLN, SL FOSS, PRED DNS, NS W/ SCAT CHT - GY / BRN

LS - GY / BRN / TAN, MOT IN PT, VF / F XLN, SL FOSS, SUBCHKY IN PT, PRED DNS, NS W/ SH - BLK

LS - LT / DK GY / TAN / BRN, VF / F XLN, SCAT M REXLN CALC, SL FOSS, CHKY IN PT, PRED DNS, NS W/ SH - BLK / GY

JOHNSON ZN
4586 (-1593)

LS - CRM / TAN, F / VF XLN, SL FOSS, PRED DNS, SUBCHKY IN PT, TR OILY FILM, NO ODOR, TR SPTY STN, PRED NS W/ SCAT CHT - BRN / GY

LS - CRM / TAN, F / VF XLN, SL FOSS, SCAT OOL, TR P INTXLN + PPT POR, SUBCHKY IN PT / PRED DNS, VSSFO, V FT ODOR, TR SPTY STN, P FLUOR, P / F CUT W/ SCAT CHT - BRN / GY

LS - V SIM TO ABOVE, SCAT P INTXLN + PPT POR, SSSG, SSFO IN SMPL, FSFO FLOAT IN TRAY, G ODOR, SCAT SPTY STN, F / G FLUOR + CUT W/ SCAT CHT - BRN / GY

LS - V SIM TO ABOVE, SCAT P INTXLN + PPT POR, TR GB, SL / F SFO, FT ODOR, SCAT SPTY STN, F / G FLUOR + CUT W/ SCAT AREN, PRED DNS W/ SCAT SH - GY / GRN W/ TR SLTST + SS - GY / GRN, VF QTZ GR, NO VIS POR, NS

MORROW SH
4660 (-1667)

CFS @ 4665'

PRED SH - GY / GRN W/ MOD AMT LS - AS ABOVE W/ SCAT SS - LT GY, VF / F QTZ GR, W SRTD, SA / SR, SIL CEM, TR GLAUC, F INTGR POR, SLTY IN PT, NS, NO ODOR

ABNT SS - AS ABOVE, F / G INTGR POR, MOD FRI IN PT, NS, NO ODOR

CFS @ 4686'

4700

ABNT SH - GY / GRN / BLK W/ SS - AS ABOVE, ARGIL IN PT, NS W/ SCAT COAL + PYR W/ TR LS - CRM / TAN, VF XLN, FOSS, AREN, DNS, NS

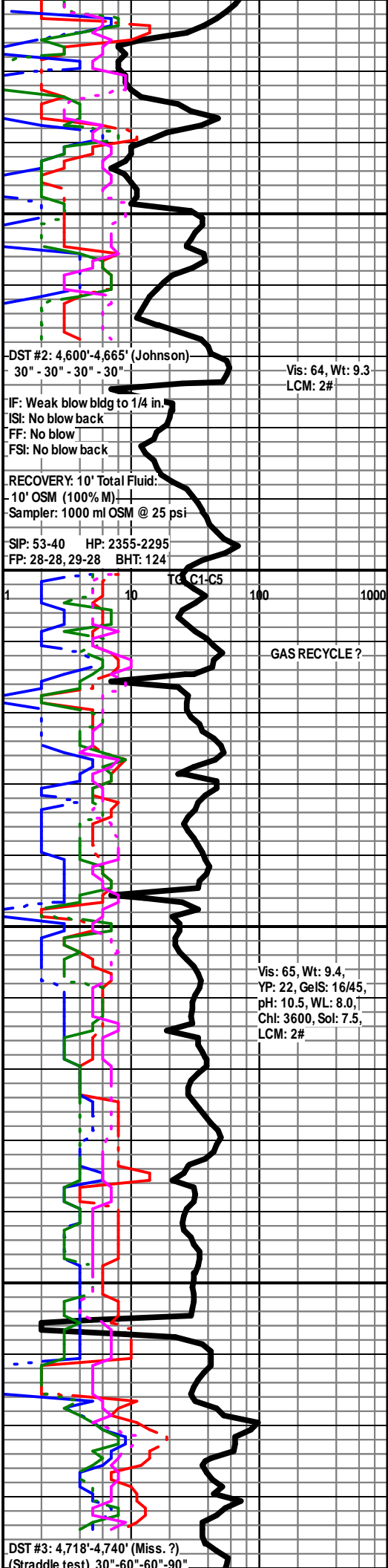
LS - WHT / CRM, VF XLN, OOL, V AREN, CHKY IN PT, PRED DNS, NS W/ SCAT CHT - GY

MISS ST GEN
4725 (-1732)

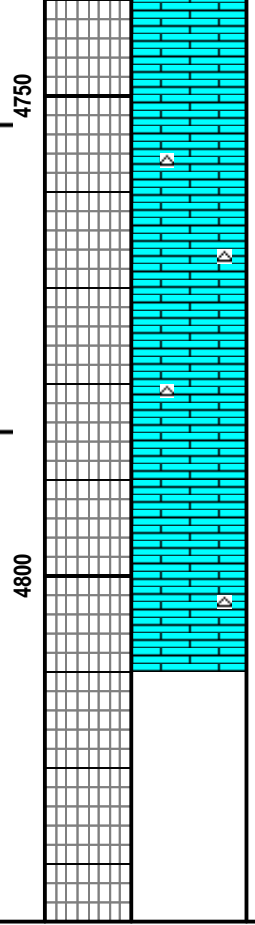
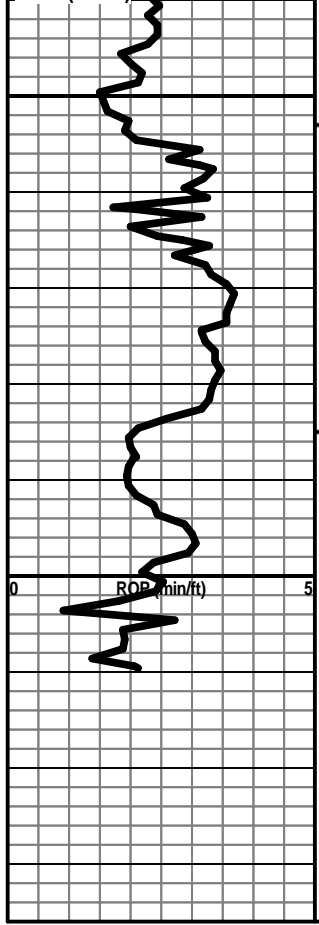
CFS @ 4731'

ST LOUIS
4734 (-1741)

LS - CRM / TAN, VF / F XLN, SCAT OOL, SUBCHKY IN



Vis: 65, Wt: 9.4,
YP: 22, GelS: 16/45,
pH: 10.5, WL: 8.0,
Ch: 3600, Sol: 7.5,
LCM: 2#



PT, PRED DNS, NS W/ SCAT LS - AS ABOVE

LS - CRM / WHT / TAN, VF / F XLN, OOL IN PT, MOD
CHKY, PRED DNS, NS W/ CHT - LT GY / WHT

LS - CRM / TAN, PRED VF / F XLN, SCAT CRYPTO XLN,
OOL IN PT, SUBCHKY IN PT, PRED DNS, NS W/ SCAT
CHT - LT GY / WHT

LS - CRM / TAN / WHT, PRED VF / F XLN, SCAT CRYPTO
XLN, OOL IN PT CHKY IN PT, PRED DNS, NS W/ TR CHT
- LT GY

TOTAL DEPTH 4810 (-1817)

