



**TRILOBITE
TESTING, INC**

DRILL STEM TEST REPORT

Culbreath Oil & Gas Company, Inc.

33-11s-32w, Logan Co, KS

3501 S Yale AVE
Tusla, OK 74135 - 8015

Golden Bear 2-33

Job Ticket: 61581

DST#: 1

ATTN: Steve Murphy

Test Start: 2015.06.02 @ 07:25:00

GENERAL INFORMATION:

Formation: **Johnson Zone**

Deviated: No Whipstock: ft (KB)

Time Tool Opened: 09:29:30

Time Test Ended: 13:00:30

Test Type: Conventional Bottom Hole (Initial)

Tester: Jace McKinney

Unit No: 75

Interval: 4630.00 ft (KB) To 4674.00 ft (KB) (TVD)

Reference Elevations: 3062.00 ft (KB)

Total Depth: 4674.00 ft (KB) (TVD)

3057.00 ft (CF)

Hole Diameter: 7.88 inches Hole Condition: Poor

KB to GR/CF: 5.00 ft

Serial #: 8675 Inside

Press@RunDepth: 27.99 psig @ 4635.00 ft (KB)

Capacity: 8000.00 psig

Start Date: 2015.06.02

End Date:

2015.06.02

Last Calib.:

2015.06.02

Start Time: 07:27:15

End Time:

13:00:30

Time On Btm:

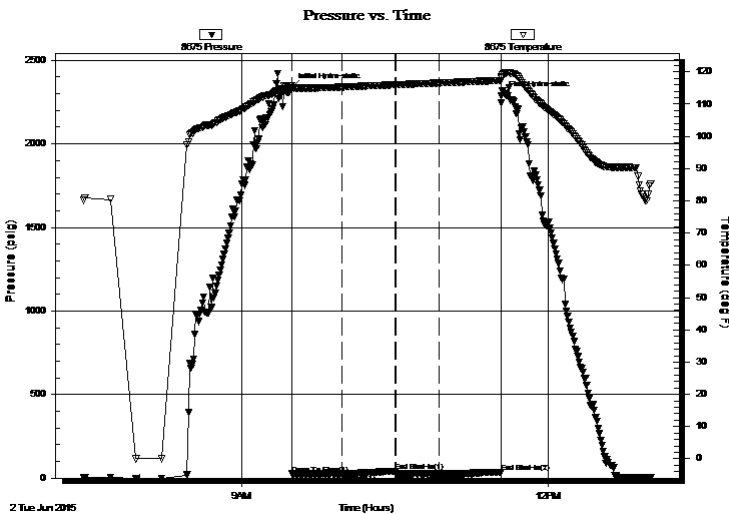
2015.06.02 @ 09:29:15

Time Off Btm:

2015.06.02 @ 11:32:45

TEST COMMENT: Built to 1/4" blow
No return blow
No blow
No return blow

PRESSURE SUMMARY



Time (Min.)	Pressure (psig)	Temp (deg F)	Annotation
0	2336.43	115.77	Initial Hydro-static
1	24.81	114.89	Open To Flow (1)
30	26.11	115.31	Shut-In(1)
61	42.76	116.02	End Shut-In(1)
62	26.15	116.01	Open To Flow (2)
87	27.99	116.58	Shut-In(2)
123	36.09	117.37	End Shut-In(2)
124	2288.50	118.44	Final Hydro-static

Recovery

Length (ft)	Description	Volume (bbl)
5.00	100% Mud w with few oil spots	0.02

Gas Rates

	Choke (inches)	Pressure (psig)	Gas Rate (Mcf/d)



**TRILOBITE
TESTING, INC**

DRILL STEM TEST REPORT

FLUID SUMMARY

Culbreath Oil & Gas Company, Inc.

33-11s-32w, Logan Co, KS

3501 S Yale AVE
Tusla, OK 74135 - 8015

Golden Bear 2-33

Job Ticket: 61581

DST#: 1

ATTN: Steve Murphy

Test Start: 2015.06.02 @ 07:25:00

Mud and Cushion Information

Mud Type: Gel Chem

Cushion Type:

Oil API:

deg API

Mud Weight: 9.00 lb/gal

Cushion Length:

ft

Water Salinity:

ppm

Viscosity: 59.00 sec/qt

Cushion Volume:

bbbl

Water Loss: 5.60 in³

Gas Cushion Type:

Resistivity: ohm.m

Gas Cushion Pressure:

psig

Salinity: 2000.00 ppm

Filter Cake: 1.00 inches

Recovery Information

Recovery Table

Length ft	Description	Volume bbl
5.00	100% Mud w ith few oil spots	0.025

Total Length: 5.00 ft Total Volume: 0.025 bbl

Num Fluid Samples: 0

Num Gas Bombs: 0

Serial #:

Laboratory Name:

Laboratory Location:

Recovery Comments:

Serial #: 8675

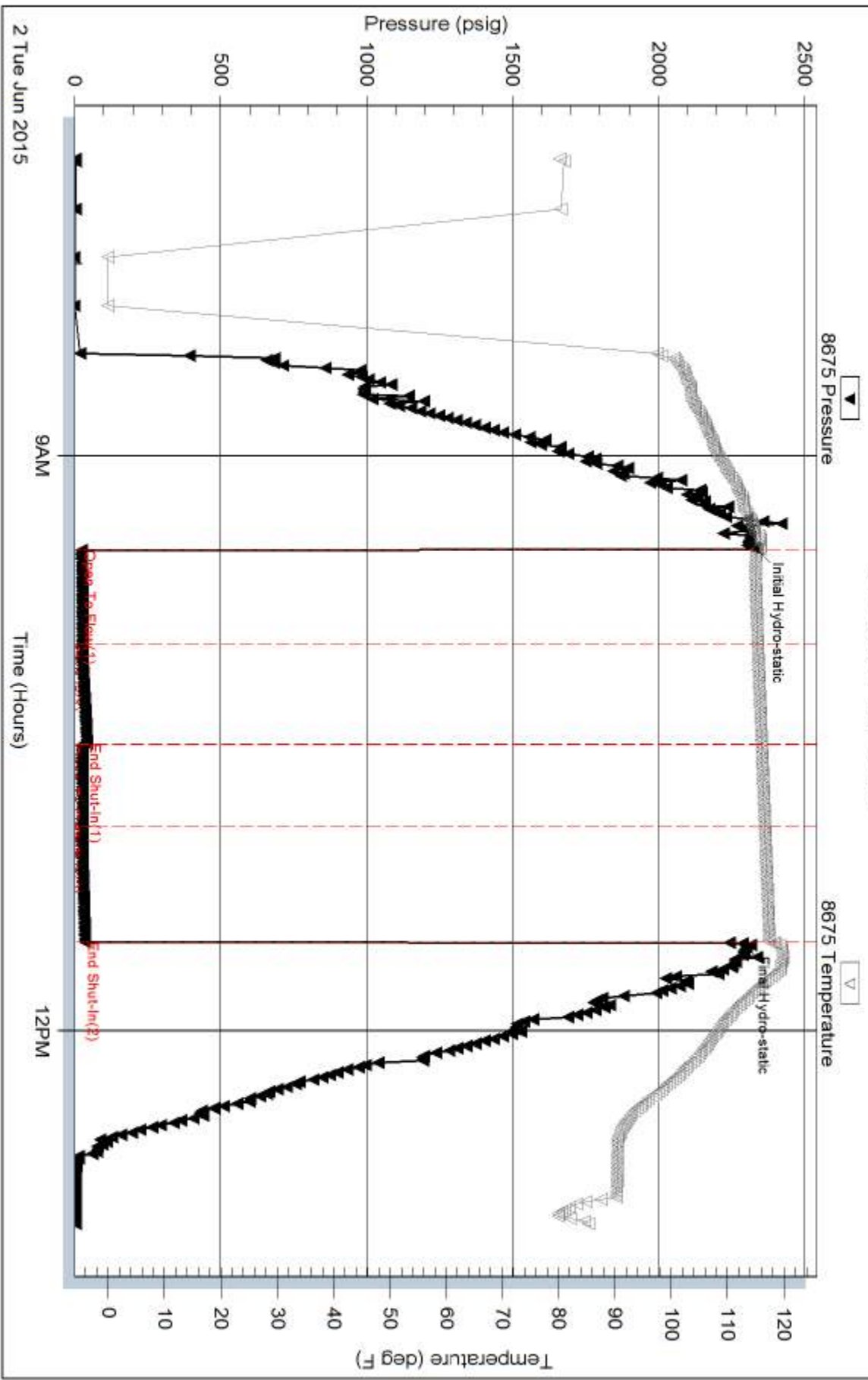
Inside

Culbreath Oil & Gas Company, Inc.

Golden Bear 2-33

DST Test Number: 1

Pressure vs. Time



Trilobite Testing, Inc

Ref. No: 61581

Printed: 2015.06.02 @ 13:15:18