



Scale 1:240 Imperial

Well Name: McCurry #1-24
 Surface Location: 808' FSL, 1169 'FEL, Sec. 24-18S-14W
 Bottom Location:
 API: 15-009-26114-0000
 License Number:
 Spud Date: 7/27/2015 Time: 7:00 PM
 Region: Barton County
 Drilling Completed: 8/3/2015 Time: 3:45 PM
 Surface Coordinates:
 Bottom Hole Coordinates:
 Ground Elevation: 1897.00ft
 K.B. Elevation: 1908.00ft
 Logged Interval: 2850.00ft To: 3500.00ft
 Total Depth: 3500.00ft
 Formation: Lansing Kansas-City
 Drilling Fluid Type: Chemical/Fresh Water Gel

OPERATOR

Company: Shelby Resources, LLC
 Address: 621 17th St, Ste 1155
 Denver, CO 80293
 Contact Geologist: Janine Sturdavant
 Contact Phone Nbr: 303-907-2209 / 720-274-4682
 Well Name: McCurry #1-24
 Location: 808' FSL, 1169 'FEL, Sec. 24-18S-14W
 API: 15-009-26114-0000
 Pool:
 State: Kansas Field: Wildcat
 Country: USA

LOGGED BY



Company: Shelby Resources, LLC
 Address: 621 17th St. Suite 1155
 Denver, CO. 80293
 Phone Nbr: 203-671-6034
 Logged By: Geologist Name: Jeremy Schwartz

NOTES

The Shelby Resources, LLC McCurry #1-24 was drilled to a total depth of 3500', bottoming in the Arbuckle. A TookeDaq gas detector was employed in the drilling of said well.

Five DST's were conducted throughout the Lansing-Kansas City and Arbuckle Zones. The DST Reports can be found at the bottom of this log.

Due to DST Results, sample shows, gas kicks, and log analysis it was determined by all parties involved to further test the well through production casing. The dry samples were saved and will be available for further review at the Kansas Geological Society Well Sample Library, located in Wichita, KS.

Respectfully Submitted,
Jeremy Schwartz
Geologist

CONTRACTOR

Contractor: Sterling Drilling Co
 Rig #: 4

Rig Type: mud rotary
 Spud Date: 7/27/2015
 TD Date: 8/3/2015
 Rig Release:

Time: 7:00 PM
 Time: 3:45 PM
 Time:

ELEVATIONS


K.B. Elevation: 1908.00ft Ground Elevation: 1897.00ft
 K.B. to Ground: 11.00ft

DATE	DEPTH	ACTIVITY
Thursday, July 30, 2015	3060'	Geologists Jeremy Schwartz on location @ 1445hrs, ~3060', DRLG ahead through Heebner, Toronto, Douglas Shale, Brown Lime, CFS @ 3153', Drop Survey,
	3180'	Strap Out, Conduct Bit Trip, Swap PDC for Button Bit, Resume Drlg, CFS @ 3180',
Friday, July 31, 2015	3180'	Resume Drlg, CFS @ 3220', Resume Drlg, CFS @ 3240', Conduct DST #1 in the
	3240'	Lansing "A-F", Successful Test, Resume Drlg ahead, CFS @ 3248', Resume Drlg,
	3322'	CFS @ 3322', Drop Survey, Conduct DST #2 in the Lansing "H-I",
Saturday, August 01, 2015	3322'	Successful Test, Resume Drlg ahead, CFS @ 3383', Resume Drlg, CFS @ 3397'
	3397'	Conduct DST #3 in the Arbuckle, Successful Test, Resume Drlg, CFS @ 3403'
Sunday, August 02, 2015	3415'	Resume Drlg, CFS @ 3409', Resume Drlg, CFS @ 3415', Conduct DST #4 in the Arbuckle,
		Successful Test, Resume Drlg, CFS @ 3425', Conduct DST #5 in the Arbuckle
Wednesday, August 03, 2005	3425'	Successful Test, Resume Drlg ahead to TD, TD of 3500' reached @ 1545hrs
	3500'	CTCH 1 hour, TOH, Conduct Logging Operations, Logging Operations Complete @ 2215hrs
		Geologist Jeremy Schwartz off location @ 2245hrs

CLIENT:	SHELBY RESOURCES, LLC
WELL NAME:	MCCURRY 1-24
LEGAL:	SW NW SE SE 24-T18S-R14W
COUNTY:	BARTON
API :	15-009-26114-00-00
DRLG CONTRACTOR:	STERLING DRILLING CO.
RIG #:	4
DOGHOUSE #:	620-388-4192
TOOLPUSHER:	LANNY SALOGA
CELL #:	620-388-4193

FORMATION	D&A																					
	KLIMA OIL, INC						ABERCROMBIE DRILLING, INC			PALOMINO PETROLEUM, INC												
	JOHNSON #1						FOSTER "C" 1			STOSS #1												
	C SW SE SW 24-18S-14W						NW NE NW 30-18S-13W			SW NE NW 24-18S-14W												
DEPTH	MCCURRY 1-24		1908		1903		1914		1902		1902											
	LOG TOPS	SAMPLE TOPS	COMP. CARD	LOG	SMPL.	COMP. CARD	LOG	SMPL.	COMP. CARD	LOG	SMPL.											
DATUM	DEPTH	DATUM	DEPTH	DATUM	DEPTH	DATUM	DEPTH	DATUM	DEPTH	DATUM	DEPTH	DATUM										
ANHYDRITE TOP	832	1076	832	1076	821	1082	-	6	-	6	823	1091	-	15	-	15	836	1066	+	10	+	10
BASE	859	1049	859	1049	850	1053	-	4	-	4	855	1049	+	0	+	0	858	1044	+	5	+	5
TOPEKA	2852	-944	2852	-944	2846	-943	-	1	-	1	2857	-943	-	1	-	1						
HEEBNER SHALE	3075	-1167	3074	-1166	3066	-1163	-	4	-	3	3081	-1167	+	0	+	1	3078	-1176	+	9	+	10
TORONTO	3082	-1174	3083	-1175	3076	-1173	-	1	-	2	3089	-1175	+	1	+	0						
DOUGLAS SHALE	3095	-1187	3094	-1186	3092	-1189	+	2	+	3	3104	-1190	+	3	+	4						
BROWN LIME	3151	-1243	3150	-1242	3146	-1243	+	0	+	1	3162	-1248	+	5	+	6	3158	-1256	+	13	+	14
LKC	3162	-1254	3164	-1256	3156	-1253	-	1	-	3	3175	-1261	+	7	+	5	3168	-1266	+	12	+	10
LKC G Porosity	3244	-1336	3253	-1345	3250	-1347	+	11	+	2	3258	-1344	+	8	-	1						
MUNCIE CREEK	3288	-1380	3285	-1377	3279	-1376	-	4	-	1	3299	-1385	+	5	+	8						
LKC H	3294	-1386	3292	-1384	3289	-1386	+	0	+	2	3306	-1392	+	6	+	8						
STARK SHALE	3349	-1441	3340	-1432	3336	-1433	-	8	+	1	3359	-1445	+	4	+	13						
BKC	3366	-1458	3372	-1464	3372	-1469	+	11	+	5	3392	-1478	+	20	+	14	3368	-1466	+	8	+	2
CONGLOMERATE					3380	-1477					3396	-1482										
ARBuckle	3390	-1482	3392	-1484	3392	-1489	+	7	+	5	3403	-1489	+	7	+	5	3396	-1494	+	12	+	10
RTD			3500	-1592	3402	-1499				93	3450	-1536				56	3495	-1593				1
LTD	3502	-1594			3400	-1497	-	97			3446	-1532	-	62			3493	-1591	-	3		

ROCK TYPES


 Dolprim  Lmst fw<7  shale, gry  Carbon Sh

ACCESSORIES

FOSSIL
 F Fossils < 20%

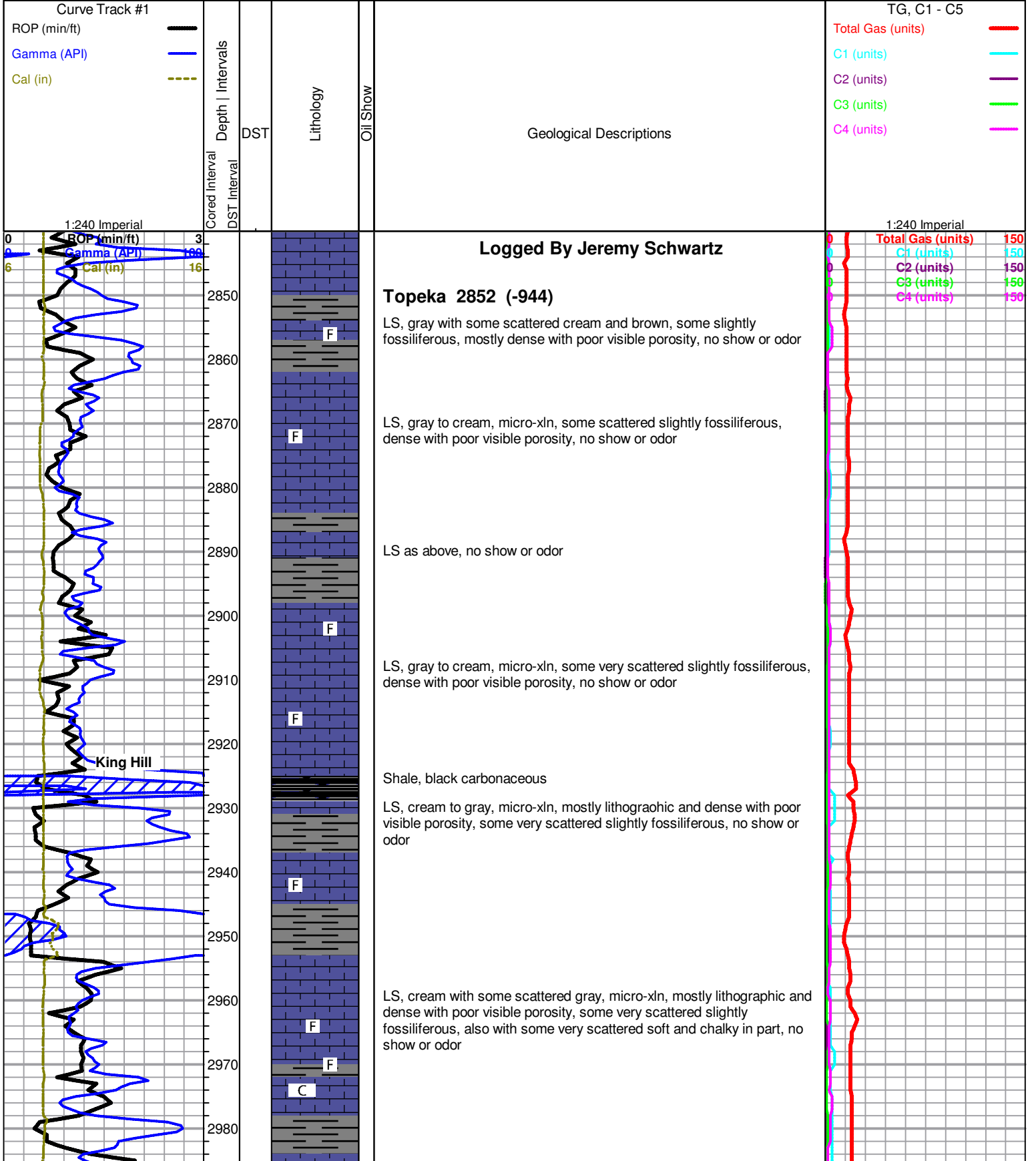
TEXTURE
 C Chalky

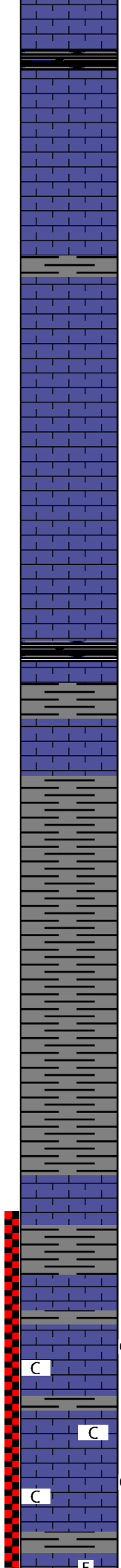
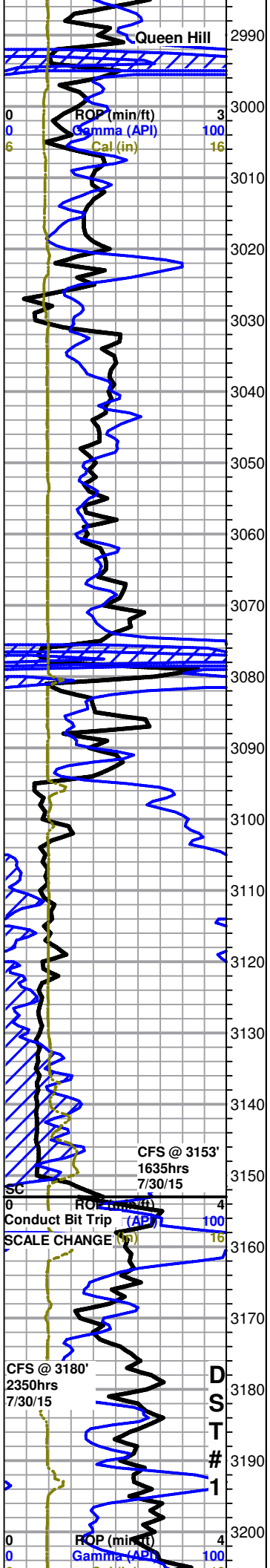
OTHER SYMBOLS

MISC
 Daily Report
 Digital Photo

DST
 DST Int
 DST alt

- Document
- Folder
- Link
- Vertical Log File
- Horizontal Log File
- Core Log File
- Drill Cuttings Rpt





Shale, black carbonaceous

LS, cream with some very scattered gray, micro-xln, mostly lithographic and dense with poor visible porosity, some very scattered slightly fossiliferous, no show or odor

LS, cream to light gray, micro-xln, mostly lithographic and dense with poor visible porosity, some scattered slightly fossiliferous, some scattered oomoldic with poor visible oomold porosity, with some very scattered soft and chalky in part, no show or odor

LS as above, no show or odor

LS, cream to gray, micro-xln, mostly lithographic and dense with poor visible porosity, some very scattered soft and chalky in part, no show or odor

Heebner 3074 (-1166)

Shale, black carbonaceous

LS, cream with some very scattered white, mostly dense with poor visible porosity, some scattered soft and chalky in part, no show or odor

Douglas Shale 3094 (-1186)

Shale, mostly gray with some scattered red and trace green, no show or odor

Shale as above, no show or odor

Brown Lime 3150 (-1242)

LS, brown, micro-xln, fossiliferous and dense with no visible porosity, no show or odor

Lansing 3164 (-1256)

MCCURRY 1-24 DST-1.jpg

3180' 30" LS, cream, micro-xln, mostly lithographic with poor visible porosity, some scattered (<25%) with scattered to very slightly vuggy edges with black stain in and around porosity only,

3180' 60" LS, cream with some scattered white, micro-xln, mostly lithographic with poor visible porosity, some very scattered with scattered poor to fair pinpoint porosity with scattered stain in and around porosity only, SSFO upon break in few chips, with some scattered soft and chalky in part, slightly chalky, NSFO in tray, poor odor

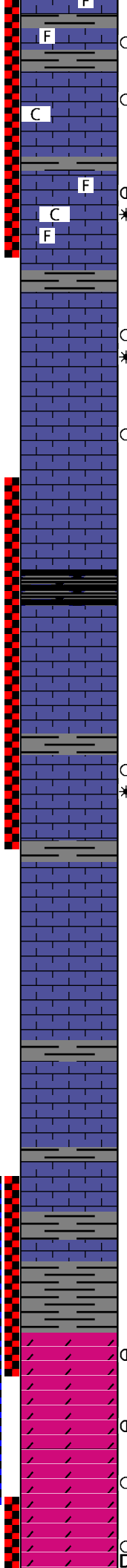
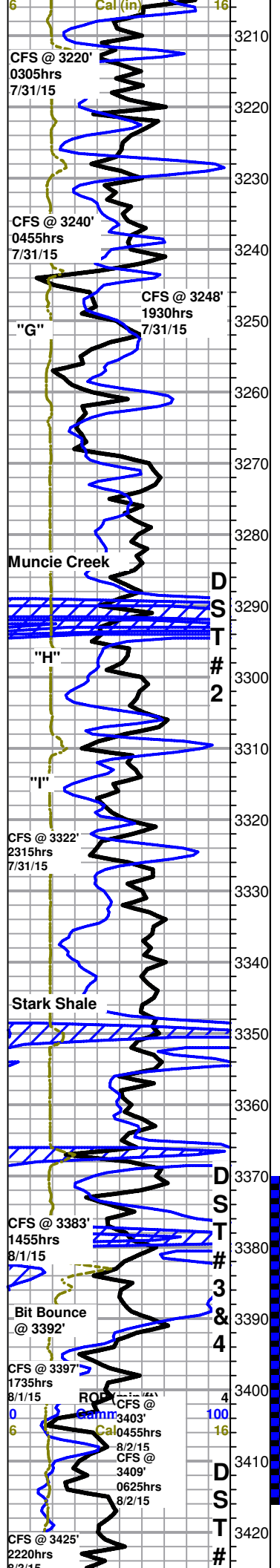
LS, cream to gray, micro-xln, mostly lithographic and dense with poor visible porosity, some scattered (<25%) with some scattered pinpoint porosity and black stain in porosity, upon break chips show poor to fair visible inter-xln porosity with VSSFO in few chips, slightly chalky, NSFO in tray, poor fleeting odor

Total Gas (units) 150
 C1 (units) 150
 C2 (units) 150
 C3 (units) 150
 C4 (units) 150

Survey @ 3153' = 1/4Deg

Mud-Co Mud chk
 3240'

Total Gas Vis: 59 Wt: 9.2
 C1 (units) PV: 16 YP: 16
 Wt: 9.2



LS, cream to gray, micro-xln, mostly lithographic and dense with poor visible porosity, some scattered fossiliferous with trace sub-oolitic, some very scattered chips with one to two edge vugs to very slightly vuggy edges with black stain in porosity only, upon break SSFO, VSSFO in tray, poor odor

LS, cream to gray, micro-xln, mostly lithographic and dense with poor visible porosity, some very scattered with slightly vuggy edges and black stain in porosity, slightly chalky, NSFO, no odor

3240' 30" LS, cream, micro-xln, mostly lithographic and dense with poor visible porosity, some very scattered fossiliferous with some scattered inter-fossil staining as well as very slightly to slightly vuggy edges with stain and slight to fair show gas bubbles in porosity, fair show free oil upon break, NSFO in tray, slightly chalky, poor odor

3240' 60" Mostly same as above, with some very scattered shows, NSFO in tray, poor odor

LS, cream to gray, micro-xln, mostly lithographic with poor visible porosity, some scattered oomoldic with poor to fair visible oomold porosity, some barren, some with scattered stain mostly confined to oomolds, few chips with fair show gas bubbles in porosity, upon break slight to fair show free oil, fairly chalky, NSFO in tray, fair odor

LS, cream to gray, micro-xln, mostly lithographic with poor visible porosity, with some scattered oomoldic, mostly poor visible oomold porosity with some scattered fair, mostly barren, few chips with scattered stain in porosity, fairly chalky, NSFO in tray, poor odor

LS, cream to gray, micro-xln, mostly lithographic and dense with poor visible porosity, some very scattered oomoldic with poor to fair visible porosity with scattered stain mostly in oomolds only, slightly chalky, NSFO in tray, poor odor

MCCURRY 1-24 DST-2.jpg

LS, cream to gray, micro-xln, lithographic and dense with poor visible porosity, with some scattered white sub-oomoldic to oomoldic with poor visible porosity, barren, NSFO, no odor

LS, cream to gray, micro-xln, lithographic and dense with poor visible porosity, no show or odor

3322' 20" LS, cream to gray with some scattered white, micro-xln, mostly lithographic and dense with poor visible porosity, some soft and chalky in part, trace sub-oolitic with slight poor inter-oolite stain, NSFO, no odor

3322' 40" LS, mostly same as above, with some scattered sub-oolitic with scattered inter-oolite stain, few chips with one to two small vugs and stain inside only, some chips fairly gassy, NSFO, no odor

3322' 60" LS, cream to gray, micro-xln, mostly lithographic with poor visible porosity, no show or odor

LS, cream to gray with some scattered brown, lithographic and dense with poor visible porosity, no show or odor

LS as above, no show or odor

LS, cream to gray, micro-xln, lithographic and dense with poor visible porosity, no show or odor

LS as above, with trace sub-oolitic to sub-oomoldic, dense with poor visible porosity, no show or odor

B/KC 3366 (-1458)

3383' 30" LS, cream to gray with some very scattered white, micro-xln, lithographic and dense with poor visible porosity, with some scattered gray and red shale, no show or odor

3383' 60" Mostly same as above, no show or odor

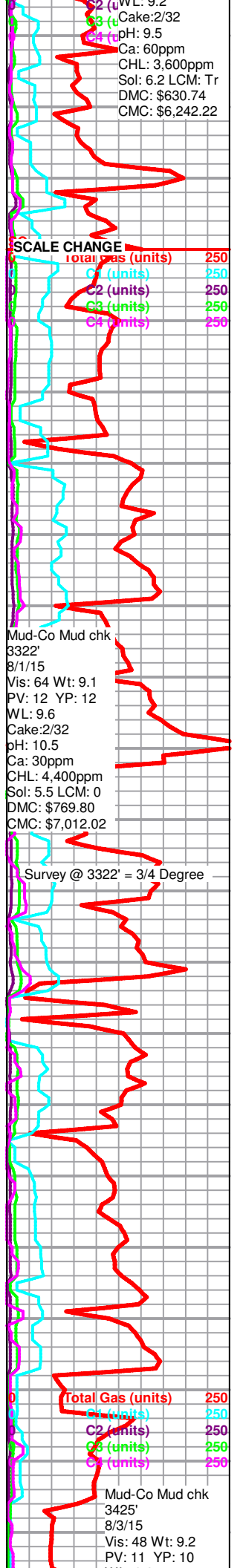
Arbuckle 3392 (-1484)

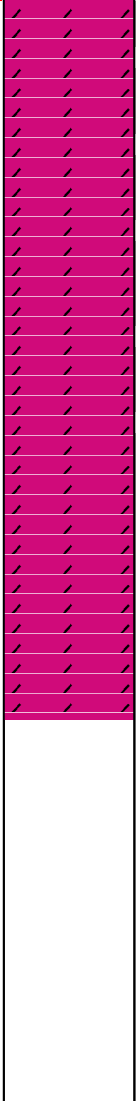
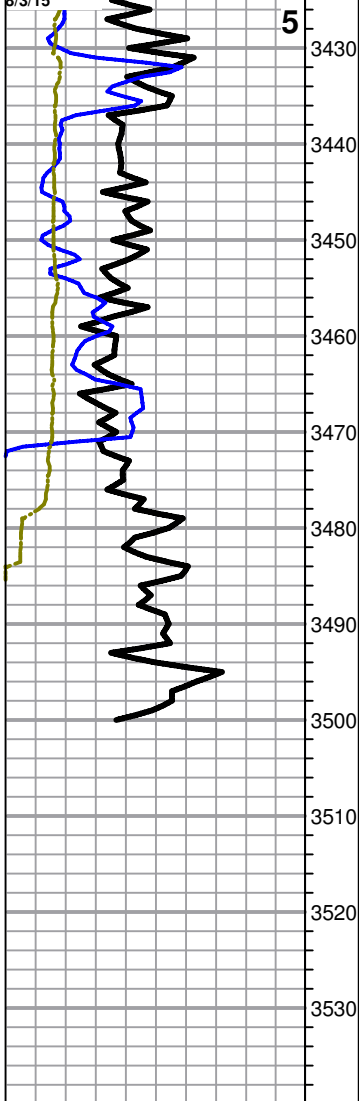
3397' 30" LS, cream to gray, micro-xln, lithographic and dense with poor visible porosity, with some very scattered dolomite, cream to light brown, micro-xln, some dense with poor visible porosity, some sub-rhombic with very scattered poor stain, upon break chips show some scattered inter-xln porosity with slight to fair show free oil, few chips also with slightly vuggy edges and scattered stain that increases to mostly saturated under lamp, NSFO in tray, no odor

3397' 60" Dolomite, cream to white with some scattered light brown, micro-xln, mostly sub-rhombic, some barren, some with scattered stain, mostly poor with some scattered fair visible inter-xln porosity, few very scattered chips rhombic with good visible porosity, some pyritic, upon break most chips have fair to good show free oil, NSFO in tray, fair odor

MCCURRY 1-24 DST-3.jpg

3403' 30" Dolomite, white with some scattered light brown, mostly sub-rhombic, some dense with poor visible porosity, some fairly friable, few chips with one to two small vugs, some barren, some with scattered stain, upon break most chips give up slight to fair show free oil and show poor to fair visible inter-xln stain and porosity. NSFO in tray, no odor





3403' 60" Mostly the same as above, NSFO in tray, no odor

3409' 60" Dolomite, white with some scattered light brown, micro-xln, mostly sub-rhombic, some dense, some fairly friable, some barren, some with scattered stain, few chips with one to two small vugs, upon break most chips give up slight to fair show free oil, NSFO in tray, poor odor

3415' 60" Dolomite, white, micro-xln, mostly sub-rhombic with some very scattered rhombic development, mostly poor visible porosity, some very scattered chips with fair visible porosity, some friable, some with scattered stain, upon break SSFO, NSFO in tray, poor odor

MCCURRY 1-24 DST-4.jpg

3425' 30" Dolomite, white, micro-med-xln, mostly sub-rhombic with poor visible porosity, some scattered rhombic with fair visible inter-xln porosity, some barren, some with scattered stain, most fairly dense, some fairly friable, some very scattered also with gilsonitic stain, upon break fair to good show free oil in most chips, NSFO in tray, poor odor

3425' 60" Dolomite, white, micro-xln, mostly sub-rhombic and dense with poor visible porosity, some very scattered rhombic, fairly dense, mostly barren, some with very scattered stain, some also with very scattered gilsonitic stain, upon break SSFO in some chips, NSFO in tray, poor fleeting odor

MCCURRY 1-24 DST-5.jpg

~3430' Dolomite, white, micro-xln, sub-rhombic and fairly dense with poor visible porosity, some scattered with scattered to very scattered gilsonitic stain, also with abundant shale, no shows or odor

~3440' Dolomite, mostly same as above, with some scattered rhombic, med-xln, mostly poor visible porosity with some very scattered fair, some very scattered with very scattered gilsonitic stain, also with abundant shale, no show or odor

~3450' Dolomite, white, micro-xln, sub-rhombic and fairly dense with poor visible porosity, some very scattered med-xln, rhombic as above, some very scattered gilsonitic stain, also with abundant shale, no show or odor

~3460' Dolomite as above, some very scattered with very scattered gilsonitic stain, also with abundant shale, no show or odor

~3470' Dolomite, white, micro-xln, mostly sub-rhombic and fairly dense with poor visible porosity, some very scattered with scattered rhombic development and scattered fair visible porosity, with scattered black stain, upon break fair show very heavy black free oil, sample cleaned up is mostly dolomite, NSFO in tray, poor odor

~3480-3500' Dolomite, white, micro-med xln, mostly sub-rhombic and dense with poor visible porosity, with some scattered sub-rhombic to rhombic with fair visible porosity, fairly friable, barren, no show or odor



WL: 9.2
 Cake: 2/32
 pH: 11.5
 Ca: 30ppm
 CHL: 4,800ppm
 Sol: 6.1 LCM: 0
 DMC: \$536.05
 CMC: \$7,685.27

Rotary TD 3500' @ 1545hrs 8/3/15
Nabors Well Services Logging TD @ 3502'
Complete Logging Operations @ 2215hrs 8/3/15
Geologist Jeremy Schwartz off location @ 2245hrs 8/3/15

DRILL STEM TEST REPORT



SHELBY RESOURCES LLC

24-18S-14W BARTON

2717 CANAL BLVD SUITE C
HAYS, KANSAS 67601

McCURRY 1-24

Job Ticket: 010050

DST#: 1

ATTN: JEFREMY SCHWARTZ

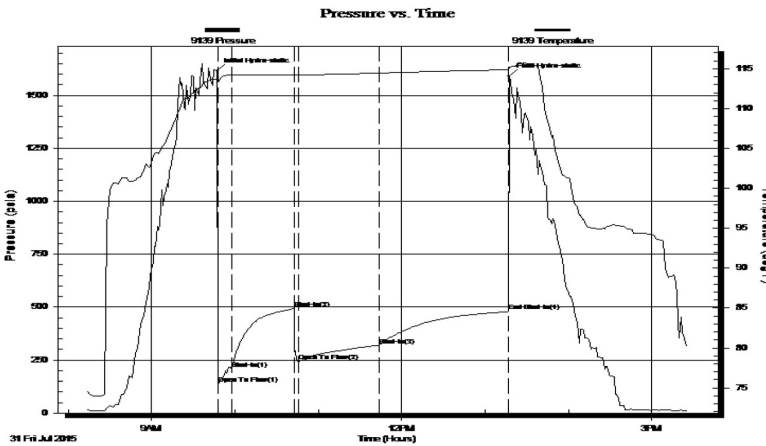
Test Start: 2015.07.31 @ 08:13:00

GENERAL INFORMATION:

Formation: **LANSING 'A-F'**
 Deviated: No Whipstock: ft (KB)
 Test Type: Conventional Bottom Hole (Initial)
 Time Tool Opened: 00:00:00
 Tester: GENE BUDIG
 Time Test Ended: 00:00:00
 Unit No: 1
Interval: 3155.00 ft (KB) To 3140.00 ft (KB) (TVD)
 Reference Elevations: 1908.00 ft (KB)
 Total Depth: 3140.00 ft (KB) (TVD)
 1897.00 ft (CF)
 Hole Diameter: 7.88 inches
 Hole Condition: Fair
 KB to GR/CF: 11.00 ft

Serial #: 9139 **Inside**
 Press@RunDepth: 480.49 psia @ 3235.06 ft (KB) Capacity: 5000.00 psia
 Start Date: 2015.07.31 End Date: 2015.07.31 Last Calib.: 2015.07.31
 Start Time: 08:13:00 End Time: 15:26:30 Time On Btm: 2015.07.31 @ 09:47:00
 Time Off Btm: 2015.07.31 @ 13:17:30

TEST COMMENT: 1ST OPENING 10 MINUTES-GOOD BLOW BUILT TO THE BOTTOM OF A 5 GALLON BUCET IN 3 MINUTES
 1ST SHUT-IN 45 MINUTES-WEAK BLOW BACK FOR 10 MINUTES AND DIED
 2ND OPENING 60 MINUTES-GOOD BLOW BUILT TO THE BOTTOM OF BUCKET BUCKET IN 90 SECONDS
 2ND SHUT-IN 90 MINUTES-



PRESSURE SUMMARY

Time (Min.)	Pressure (psia)	Temp (deg F)	Annotation
0	1615.78	113.76	Initial Hydro-static
1	137.66	113.33	Open To Flow (1)
11	206.43	114.19	Shut-In(1)
56	493.09	114.29	Shut-In(2)
59	242.67	114.20	Open To Flow (2)
117	319.87	114.46	Shut-In(3)
210	480.49	114.89	End Shut-In(1)
211	1592.07	115.24	Final Hydro-static

Recovery

Length (ft)	Description	Volume (bbl)
60.00	OIL AND GAS CUT MUDDY WATER	0.30
0.00	5 GAS 5 OIL 40 MUD 40 WATER	0.00
120.00	HEAVY OIL AND GAS CUT MUDDY WATER	0.59
0.00	40 GAS 30 OIL 10 MUD 20 WATER	0.00
120.00	GASSY FROTHY OIL	1.41
0.00	60 GAS 30 OIL 6 MUD 4 water	0.00

Gas Rates

Choke (inches)	Pressure (psia)	Gas Rate (Mcf/d)



DRILL STEM TEST REPORT

SHELBY RESOURCES LLC

24-18S-14W BARTON

2717 CANAL BLVD SUITE C
HAYS, KANSAS 67601

MCCURRY 1-24

Job Ticket: 01225

DST#: 2

ATTN: JEFREMY SCHWARTZ

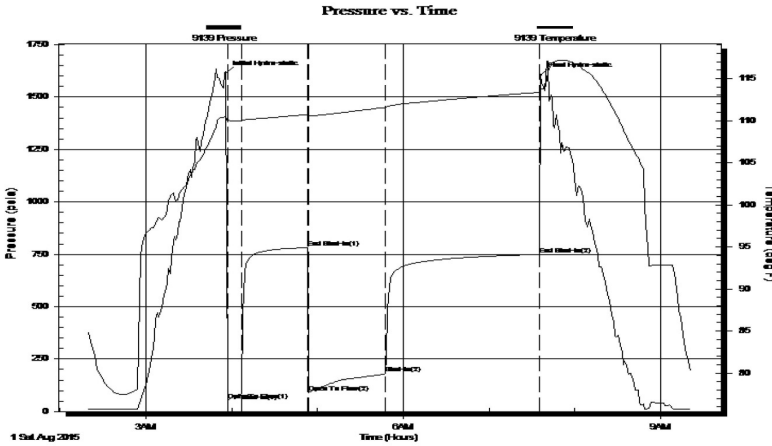
Test Start: 2015.08.01 @ 02:19:00

GENERAL INFORMATION:

Formation: **LANSING 'H'**
 Deviated: No Whipstock: ft (KB)
 Time Tool Opened: 00:00:00
 Time Test Ended: 00:00:00
 Interval: **3272.00 ft (KB) To 3322.00 ft (KB) (TVD)**
 Total Depth: 3322.00 ft (KB) (TVD)
 Hole Diameter: 7.88 inches Hole Condition: Fair
 Test Type: Inflate Bottom Hole (Initial)
 Tester: GENE BUIDIG
 Unit No: 1
 Reference Elevations: 1908.00 ft (KB)
 1897.00 ft (CF)
 KB to GR/CF: 11.00 ft

Serial #: 9139 Outside
 Press@RunDepth: 749.57 psia @ 3317.37 ft (KB) Capacity: 5000.00 psia
 Start Date: 2015.08.01 End Date: 2015.08.01 Last Calib.: 2015.08.01
 Start Time: 02:19:00 End Time: 09:21:30 Time On Btm: 2015.08.01 @ 03:56:00
 Time Off Btm: 2015.08.01 @ 07:36:00

TEST COMMENT: 1ST OPENING 10 MINUTES WEAK BUILDING BLOW BUILT TO 4 1/2 INCHES INTO THE WATER
 1ST SHUT-IN 45 MINUTES-NO BLOW BACK
 2ND OPENING 60 MINUTES-WEAK BUILDING BLOW BUILT TO THE BOTTOM OF THE BUCKET IN 55 MIN.
 2ND SHUT-IN 105 MINUTES-NO BLOW BACK



PRESSURE SUMMARY

Time (Min.)	Pressure (psia)	Temp (deg F)	Annotation
0	1614.98	110.44	Initial Hydro-static
1	52.01	109.89	Open To Flow (1)
11	84.75	109.92	Shut-In(1)
58	781.54	110.74	End Shut-In(1)
58	90.22	110.40	Open To Flow (2)
112	180.37	111.56	Shut-In(2)
219	749.57	113.36	End Shut-In(2)
220	1603.98	113.66	Final Hydro-static

Recovery

Length (ft)	Description	Volume (bbl)
55.00	VERY SLIGHTLY OIL CUT MUDDY WATER	0.27
0.00	35 MUD 64 WATER 1 OIL	0.00
150.00	WATER 5 MUD 95 WATER	0.74
0.00	CHLORIDES 62000	0.00

Gas Rates

Choke (inches)	Pressure (psia)	Gas Rate (Mcf/d)



DRILL STEM TEST REPORT

SHELBY RESOURCES LLC

24-18S-14W BARTON

2717 CANAL BLVD SUITE C
HAYS, KANSAS 67601

MCCURRY 1-24

Job Ticket: 01227

DST#: 3

ATTN: JEFREMY SCHWARTZ

Test Start: 2015.08.01 @ 08:45:00

GENERAL INFORMATION:

Formation: **ARBUCKLE**

Deviated: No Whipstock: ft (KB)

Time Tool Opened: 00:00:00

Time Test Ended: 00:00:00

Test Type: Conventional Bottom Hole (Initial)

Tester: GENE BUDIG

Unit No: 1

Interval: 3370.00 ft (KB) To 3397.00 ft (KB) (TVD)

Reference Elevations: 1908.00 ft (KB)

Total Depth: 3397.00 ft (KB) (TVD)

1897.00 ft (CF)

Hole Diameter: 7.88 inches Hole Condition: Fair

KB to GR/CF: 11.00 ft

Serial #: 9139

Outside

Press@RunDepth: 1648.91 psia @ 3392.00 ft (KB)

Capacity: 5000.00 psia

Start Date: 2015.08.01

End Date: 2015.08.02

Last Calib.: 2015.08.02

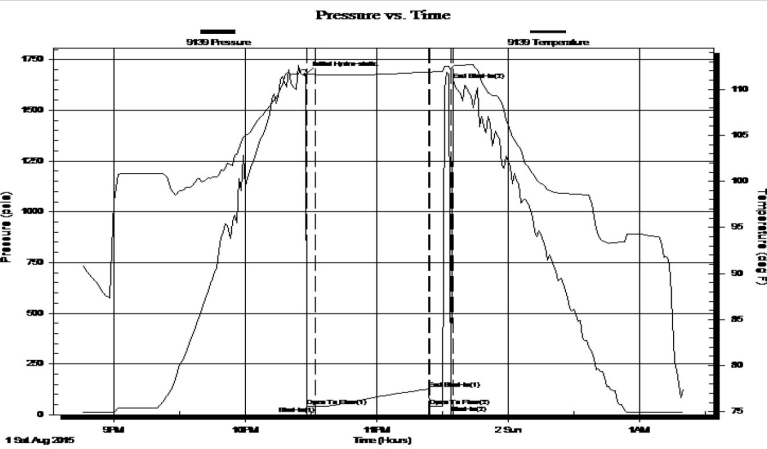
Start Time: 20:45:00

End Time: 01:20:00

Time On Btm: 2015.08.01 @ 22:27:30

Time Off Btm:

TEST COMMENT: 1ST OPENING 10 MINUTES- VERY WEAK SURFACE BLOW
 1ST SHUT-IN 45 MINUTES-NO BLOW BACK
 2ND OPENING 15 MIN NO BLOW FLUSHED TOOL GOOD SURGE NO HELP PULLED TOOL



PRESSURE SUMMARY

Time (Min.)	Pressure (psia)	Temp (deg F)	Annotation
0	1678.34	112.18	Initial Hydro-static
1	42.90	111.66	Open To Flow (1)
5	42.09	111.61	Shut-In(1)
56	125.75	111.89	End Shut-In(1)
57	42.16	111.88	Open To Flow (2)
67	47.50	112.10	Shut-In(2)
68	1648.91	112.53	End Shut-In(2)

Recovery

Length (ft)	Description	Volume (bbl)
5.00	OIL CUT MUD	0.02

Gas Rates

Choke (inches)	Pressure (psia)	Gas Rate (Mcf/d)

DRILL STEM TEST REPORT



SHELBY RESOURCES LLC

24-18S-14W BARTON

2717 CANAL BLVD SUITE C
HAYS, KANSAS 67601

McCURRY 1-24

Job Ticket: 01228

DST#: 4

ATTN: JEFREMY SCHWARTZ

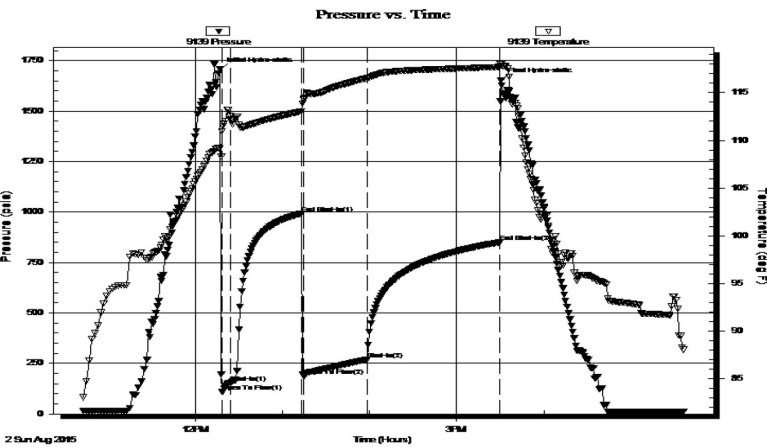
Test Start: 2015.08.02 @ 10:42:00

GENERAL INFORMATION:

Formation: **ARBUCKLE**
 Deviated: No Whipstock: ft (KB)
 Time Tool Opened: 00:00:00
 Time Test Ended: 00:00:00
 Test Type: Conventional Bottom Hole (Initial)
 Tester: GENE BUDIG
 Unit No: 1
 Interval: **3370.00 ft (KB) To 3415.00 ft (KB) (TVD)**
 Total Depth: 3415.00 ft (KB) (TVD)
 Reference Elevations: 1908.00 ft (KB)
 1897.00 ft (CF)
 Hole Diameter: 7.88 inches Hole Condition: Fair
 KB to GR/CF: 11.00 ft

Serial #: 9139 Outside
 Press@RunDepth: 850.13 psia @ 3410.00 ft (KB) Capacity: 5000.00 psia
 Start Date: 2015.08.02 End Date: 2015.08.02 Last Calib.: 2015.08.02
 Start Time: 10:43:00 End Time: 17:36:00 Time On Btm: 2015.08.02 @ 12:17:00
 Time Off Btm: 2015.08.02 @ 15:30:30

TEST COMMENT: 1ST OPENING 10 MINUTES GOOD BLOW BUILT TO THE BOTTOM OF A 5 GALLON BUCKET IN 3 1/2 MIN.
 1ST SHUT-IN 45 MINUTES-NO BLOW BACK
 2ND OPENING 45 MINUTES-GOOD BLOW BUILT TO THE BOTTOM OF A 5 GALLON BUCKET IN 5 MINUTES
 2ND SHUT-IN 90 MINUTES- NO BLOW BACK



PRESSURE SUMMARY

Time (Min.)	Pressure (psia)	Temp (deg F)	Annotation
0	1705.80	109.12	Initial Hydro-static
2	109.85	110.97	Open To Flow (1)
8	152.55	112.20	Shut-In(1)
56	993.02	113.04	End Shut-In(1)
58	187.41	114.29	Open To Flow (2)
102	269.55	116.53	Shut-In(2)
193	850.13	117.70	End Shut-In(2)
194	1654.20	117.98	Final Hydro-static

Recovery

Length (ft)	Description	Volume (bbl)
60.00	SLIGHTLY MUD CUT OIL	0.30
0.00	10 GAS 80 OIL 5 MUD 5 w ater	0.00
120.00	CLEAN GASSY OIL 10 GAS 90 OIL	0.59
120.00	SLIGHTLY MUD CUT GASSY OIL	1.35
0.00	10 GAS 70 OIL 20 MUD	0.00
180.00	MUD CUT GASSY OIL	2.52

Gas Rates

	Choke (inches)	Pressure (psia)	Gas Rate (Mcf/d)



DRILL STEM TEST REPORT

SHELBY RESOURCES LLC

24-18S-14W BARTON

2717 CANAL BLVD SUITE C
HAYS, KANSAS 67601

McCURRY 1-24

Job Ticket: 01229

DST#: 5

ATTN: JEFREMY SCHWARTZ

Test Start: 2015.08.03 @ 02:41:00

GENERAL INFORMATION:

Formation: **ARBUCKLED**

Deviated: No Whipstock: ft (KB)

Time Tool Opened: 00:00:00

Time Test Ended: 00:00:00

Test Type: Conventional Bottom Hole (Initial)

Tester: GENE BUDIG

Unit No: 1

Interval: **3415.00 ft (KB) To 3425.00 ft (KB) (TVD)**

Reference Elevations: 1908.00 ft (KB)

Total Depth: 3425.00 ft (KB) (TVD)

1897.00 ft (CF)

Hole Diameter: 7.88 inches Hole Condition: Fair

KB to GR/CF: 11.00 ft

Serial #: 9119

Inside

Press@RunDepth: 855.83 psia @ 3420.00 ft (KB)

Capacity: 5000.00 psia

Start Date: 2015.08.03

End Date: 2015.08.03

Last Calib.: 2015.08.03

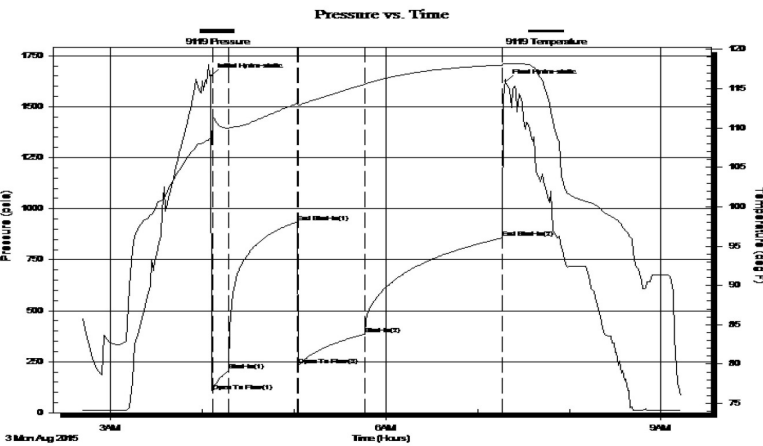
Start Time: 02:41:00

End Time: 09:13:30

Time On Btm: 2015.08.03 @ 04:05:30

Time Off Btm: 2015.08.03 @ 07:18:30

TEST COMMENT: 1ST OPENING 10 MINUTES- BUILT TO THE BOTTOM OF A 5 GALLON BUCKET IN 2 MINUTES
 1ST SHUT-IN 45 MINUTES-NO BLOW BACK
 2ND OPENING 45 MINUTES-BUILT TO THE BOTTOM OF A 5 GALLON BUCKET IN 3 MINUTES
 2ND SHUT-IN 90 MINUTES-



PRESSURE SUMMARY

Time (Min.)	Pressure (psia)	Temp (deg F)	Annotation
0	1650.47	108.65	Initial Hydro-static
2	104.82	111.42	Open To Flow (1)
12	208.16	109.95	Shut-In(1)
57	934.23	113.10	End Shut-In(1)
57	231.51	112.90	Open To Flow (2)
101	384.75	115.53	Shut-In(2)
191	855.83	117.99	End Shut-In(2)
193	1624.01	118.17	Final Hydro-static

Recovery

Length (ft)	Description	Volume (bbl)
720.00	SALT WATER CHLORIDES26000	8.12

Gas Rates

Choke (inches)	Pressure (psia)	Gas Rate (Mcf/d)