

# KITT NOAH

PETROLEUM GEOLOGIST  
Kansas License #229



## GEOLOGIST'S REPORT

DRILLING TIME AND SAMPLE LOG

ELEVATION: **KB 2153**  
GL: **2143**  
MEASURED FROM: **KB**

#15-065-24.102

OPERATOR: **Russell Oil, Inc.**

LEASE: **Rita Law "A"** WELL NO: **#24-1**

LOCATION: **1259'FN & 913'FE**

SEC: **24** TWP: **8S** RNG: **23W**

COUNTY: **Graham** STATE: **Kansas**

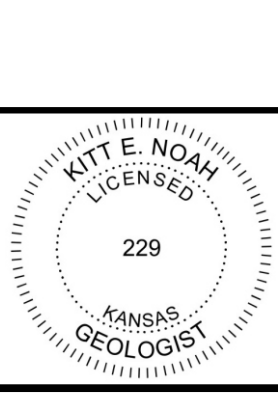
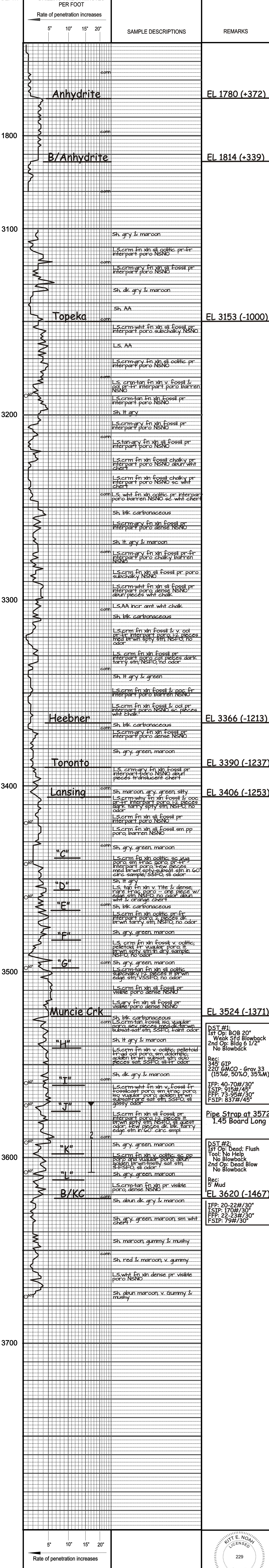
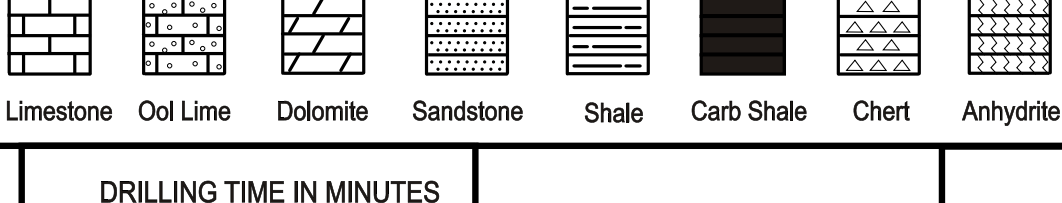
CASING RECORD:  
SURFACE: **8 5/8" set at 335 w/150 sx.**  
PRODUCTION: **4 1/2" set at 3668 w/125 sx.**  
DV TOOL: **PC set at 1814'**

CONTRACTOR: **Southwind Rig #1**  
COMM: **6-17-2015** COMPL: **6-24-2015**  
RTD: **3675** LT: **3677**

SAMPLES SAVED FROM: **3100 to TD**  
DRILLING TIME SAVED FROM: **3100 to TD**  
SAMPLES EXAMINED FROM: **3100 to TD**  
GEOLOGICAL SUPERVISION FROM: **3100 to TD**  
MUD UP: **3000** MUD TYPE: **chemical**  
Mudco - **Geary Schmidtberger**  
DRILL STEM TESTS TAKEN: **2**  
**Trilobite - Brennan Lonsdale**

SURVERS: **Pioneer Energy Services**  
**Dual Computerized Porosity**  
**Microlog**

### LEGEND



ELEVATION: **KB 2153**

OPERATOR: **Russell Oil, Inc.** LOCATION: **1259'FN & 913'FE**  
LEASE: **Rita Law "A"** WELL NO: **#24-1** SEC: **24** TWP: **8S** RNG: **23W**  
API: **15-065-24.102** FIELD: **Wildcat** COUNTY: **Graham** STATE: **Kansas**