

Scale 1:240 (5"=100') Imperial
Measured Depth Log

Well Name: MARLENE #1
API: 15-051-26796-00-00
Location: NW NE SE NE SECTION 25 13S 19W
License Number: 5663
Spud Date: 8/23/2015
Surface Coordinates: 1605' FROM NORTH LINE OF SECTION 588' FROM EAST LINE OF SECTION
Bottom Hole Coordinates: 1605' FROM NORTH LINE OF SECTION 588' FROM EAST LINE OF SECTION
Ground Elevation (ft): 2014' **K.B. Elevation (ft):** 2019'
Logged Interval (ft): 2900' **To:** 3675 **Total Depth (ft):** 3675
Formation: ARBUCKLE
Type of Drilling Fluid: CHEMICAL, MUD-CO
Region: ELLIS CO. KS.
Drilling Completed: 8/3/2015

Printed by WellSight Log Viewer from WellSight Systems 1-800-447-1534 www.WellSight.com

OPERATOR

Company: Hess Oil Company
Address: PO Box 1009
 Mcpherson, KANSAS 67460 1009
 (620) 241-4640

GEOLOGIST

Name: DAVID GOULD (LOGGER)
Company: DMT COMPANY
Address: 532 SUNRISE
 PRATT, KANSAS 67124
 (620) 388-2847

Comments

CONTRACTOR:
 Mallard J.V. Inc. Rig #1

BIT RECORD:
 12 1/4", RR, RT, 0-208'
 7 7/8", SMITH, RD6366, 208 TO 3675'

SURVEYS:
 208' 3/4 DEGREE
 3254' 3/4 DEGREE
 3670' 1 1/4 DEGREE

DAILY STATUS: (6:30 AM)
 7/26/2015, 1680 DRILL
 7/27/2015, 2653 DRILL
 7/28/2015, 3254 CTCH
 7/29/2015, 3325 TIH / DST #2
 7/30/2015, 3393 DRILL
 7/31/2015, 3426 TOH FOR DST #5
 8/1/2015, 3530 TOH WITH DST #6
 8/2/2015, 3530 DRILL
 8/3/2015, 3670 CTCH AFTER DST #7
 8/4/2015, RUN CASING

Well Name & No.: Marlene #1 **Company:** Hess Oil Co. **Test No.:** 1 **Interval Tested:** 3207 - 3254

Zone Tested: Shaw **Times:** 45-45-45-45

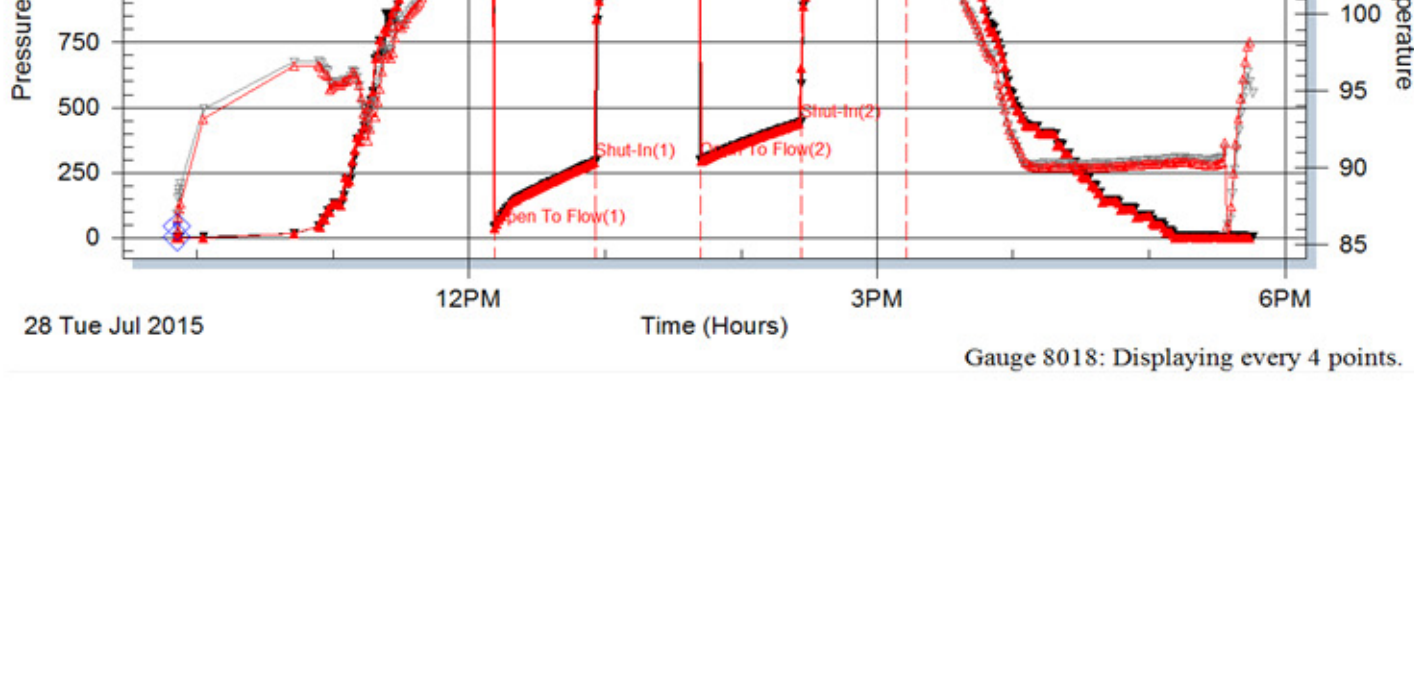
Blow Description: IFF: Weak blow to Strong in 8 Min. **ISI:** No Blow Back **FFP:** Weak blow to Strong in 30 Min. **FSI:** No Blow Back

Rec: 3 Feet of CO 0% Gas 100% Oil, 195 Feet of MW/Show of Oil 0% Gas 0% Oil 75% Water 25% Mud, 620 Feet of Water 0% Gas 0% Oil 100% Water 0% Mud, **Rec. Total:** 817', **BHT:** 111 Gravity: N/A

Initial Hydrostatic: 1533 **First Initial Flow:** 41 **First Final Flow:** 293 **Initial Shut-In:** 1053

Second Initial Flow: 299 **Second Final Flow:** 443 **Final Shut-In:** 1041 **Final Hydrostatic:** 1504

Pressure vs. Time



Gauge 8018: Displaying every 4 points.

Well Name & No.: Marlene #1 **Company:** Hess Oil Co. **Test No.:** 2 **Interval Tested:** 3290 - 3325

Zone Tested: Toronto **Times:** 30-30-30-30

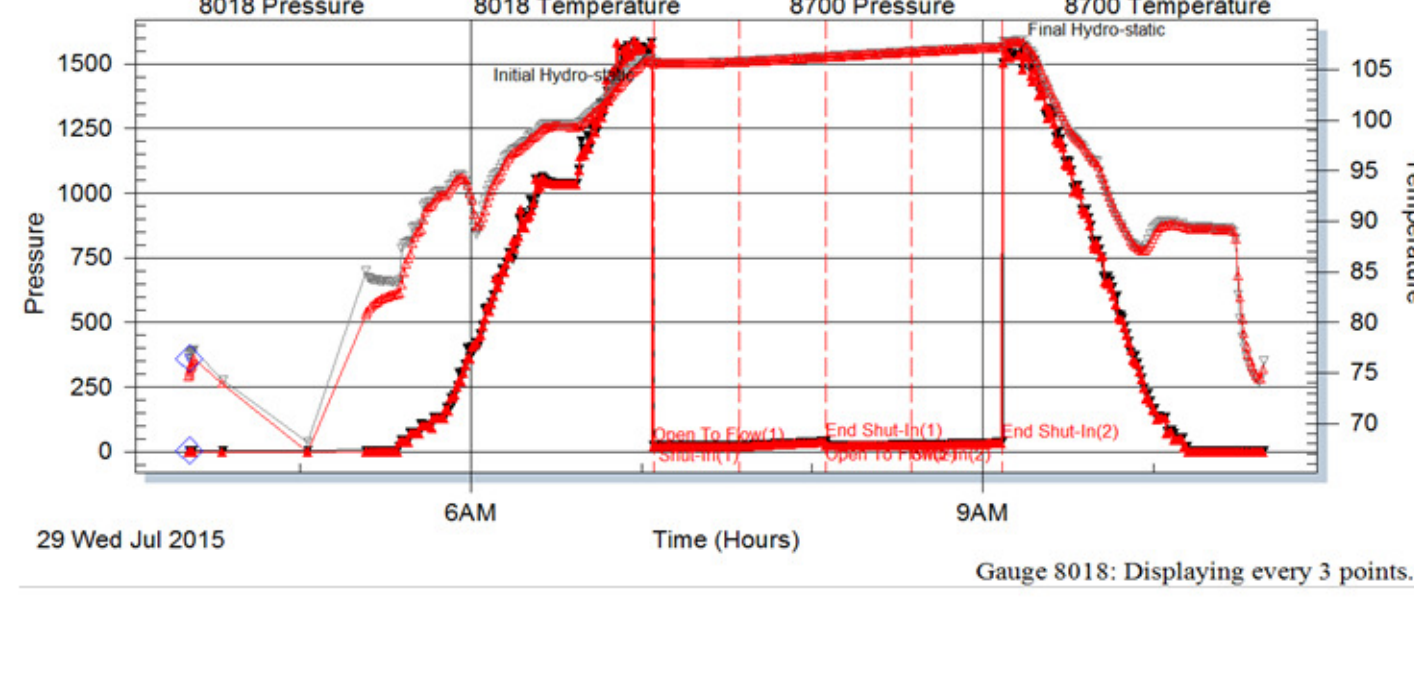
Blow Description: IFF: Surface Blow, Died in 10 Min. **ISI:** No Blow Back **FFP:** No Blow **FSI:** No Blow Back

Rec: 5 Feet of Mud 0% Gas 0% Oil 100% Mud, **Rec. Total:** 5', **BHT:** 107 Gravity: N/A

Initial Hydrostatic: 1546 **First Initial Flow:** 24 **First Final Flow:** 24 **Initial Shut-In:** 39

Second Initial Flow: 26 **Second Final Flow:** 26 **Final Shut-In:** 34 **Final Hydrostatic:** 1536

Pressure vs. Time



Gauge 8018: Displaying every 3 points.

Well Name & No.: Marlene #1 **Company:** Hess Oil Co. **Test No.:** 3 **Interval Tested:** 3336 - 3360

Zone Tested: LKC **Times:** 30-30-30-30

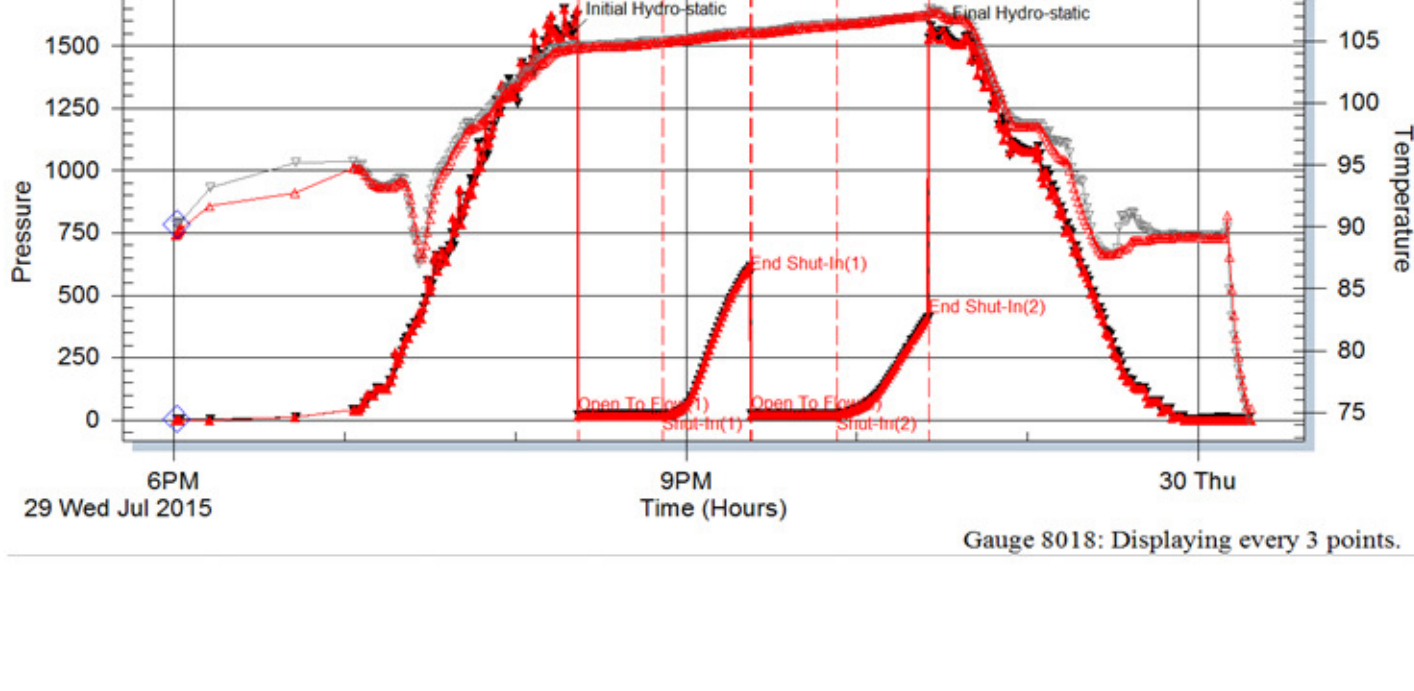
Blow Description: IFF: Surface Blow Thru Out **ISI:** No Blow Back **FFP:** No Blow **FSI:** No Blow Back

Rec: 5 Feet of Mud W/Show of Oil 0% Gas 0% Oil, 100% Mud, **Rec. Total:** 5', **BHT:** 107 Gravity: N/A

Initial Hydrostatic: 1551 **First Initial Flow:** 20 **First Final Flow:** 22 **Initial Shut-In:** 586

Second Initial Flow: 23 **Second Final Flow:** 23 **Final Shut-In:** 413 **Final Hydrostatic:** 1533

Pressure vs. Time



Gauge 8018: Displaying every 3 points.

Well Name & No.: Marlene #1 **Company:** Hess Oil Co. **Test No.:** 4 **Interval Tested:** 3365 - 3414

Zone Tested: LKC **Times:** 45-60-45-60

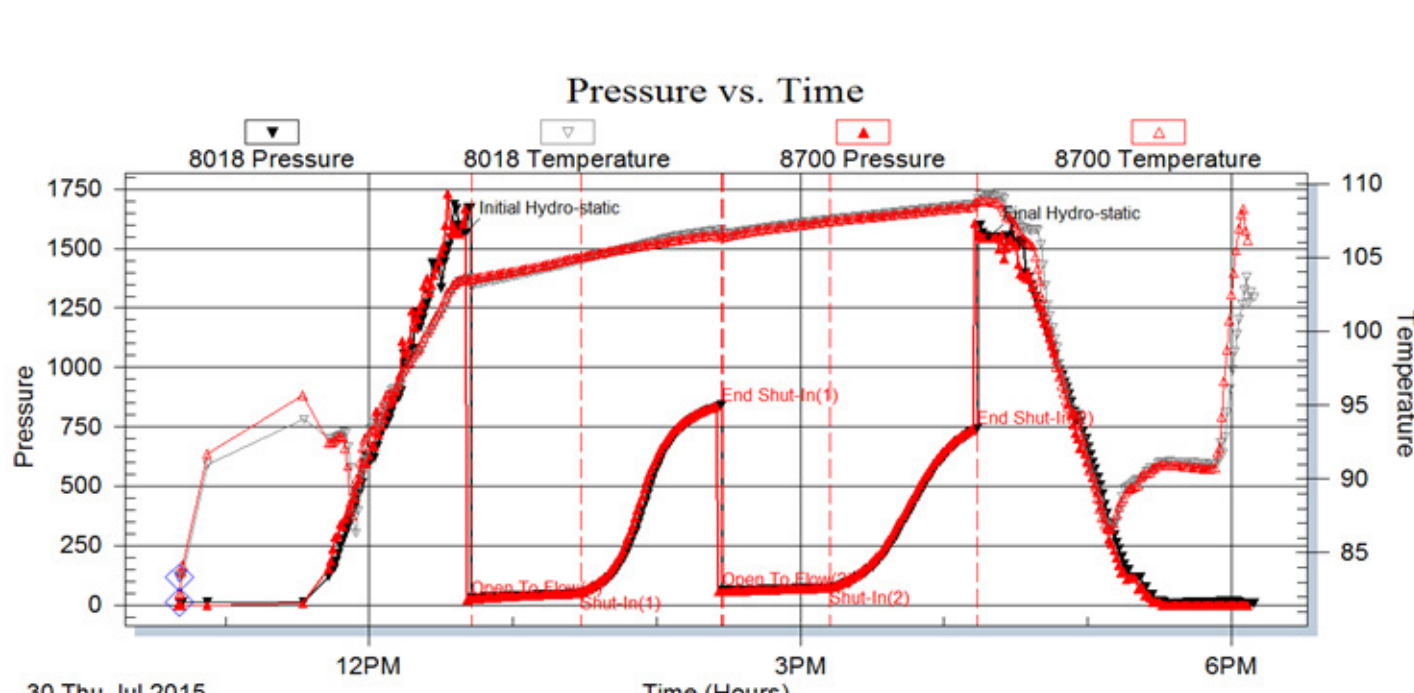
Blow Description: IFF: Weak Blow Thru Out 1/2 to 1" Blow **ISI:** No Blow Back **FFP:** No Blow 1st 5 Min. Then Weak Blow Thru Out 1/2" Blow **FSI:** No Blow Back

Rec: 60 Feet of O&GCM 5% Gas 8% Oil 87% Mud, 60 Feet of O&GCM 5% Gas 12% Oil 83% Mud, **Rec. Total:** 120', **BHT:** 108 Gravity: N/A

Initial Hydrostatic: 1568 **First Initial Flow:** 28 **First Final Flow:** 48 **Initial Shut-In:** 840

Second Initial Flow: 61 **Second Final Flow:** 73 **Final Shut-In:** 743 **Final Hydrostatic:** 1546

Pressure vs. Time



Gauge 8018: Displaying every 4 points.

Well Name & No.: Marlene #1 **Company:** Hess Oil Co. **Test No.:** 5 **Interval Tested:** 3413 - 3426

Zone Tested: LKC **Times:** 45-60-45-60

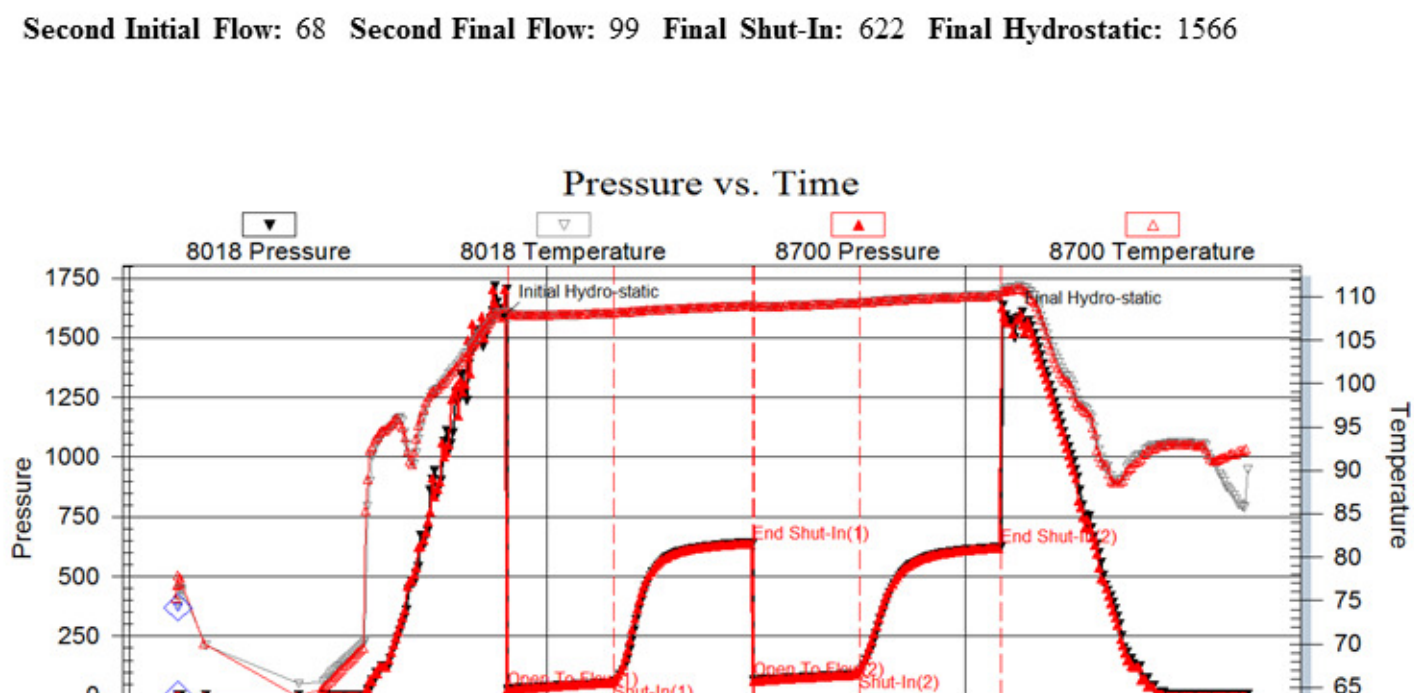
Blow Description: IFF: Weak Blow Thru Out 1/4 to 2" Blow **ISI:** No Blow Back **FFP:** Weak Blow Thru Out 1/4 to 2" Blow **FSI:** No Blow Back

Rec: 240 Feet of GIP, 35 Feet of MGO 15% Gas 45% Oil 0% Water 40% Mud, 30 Feet of HO&GCWM 10% Gas 20% Oil 20% Water 50% Mud, 60 Feet of O&GCMW 10% Gas 10% Oil 70% Water 10% Mud **Rec. Total:** 125', **BHT:** 110 Gravity: N/A

Initial Hydrostatic: 1592 **First Initial Flow:** 27 **First Final Flow:** 56 **Initial Shut-In:** 638

Second Initial Flow: 68 **Second Final Flow:** 99 **Final Shut-In:** 622 **Final Hydrostatic:** 1566

Pressure vs. Time



Gauge 8018: Displaying every 4 points.

Well Name & No.: Marlene #1 **Company:** Hess Oil Co. **Test No.:** 6 **Interval Tested:** 3448 - 3530

Zone Tested: LKC **Times:** 45-45-45-45

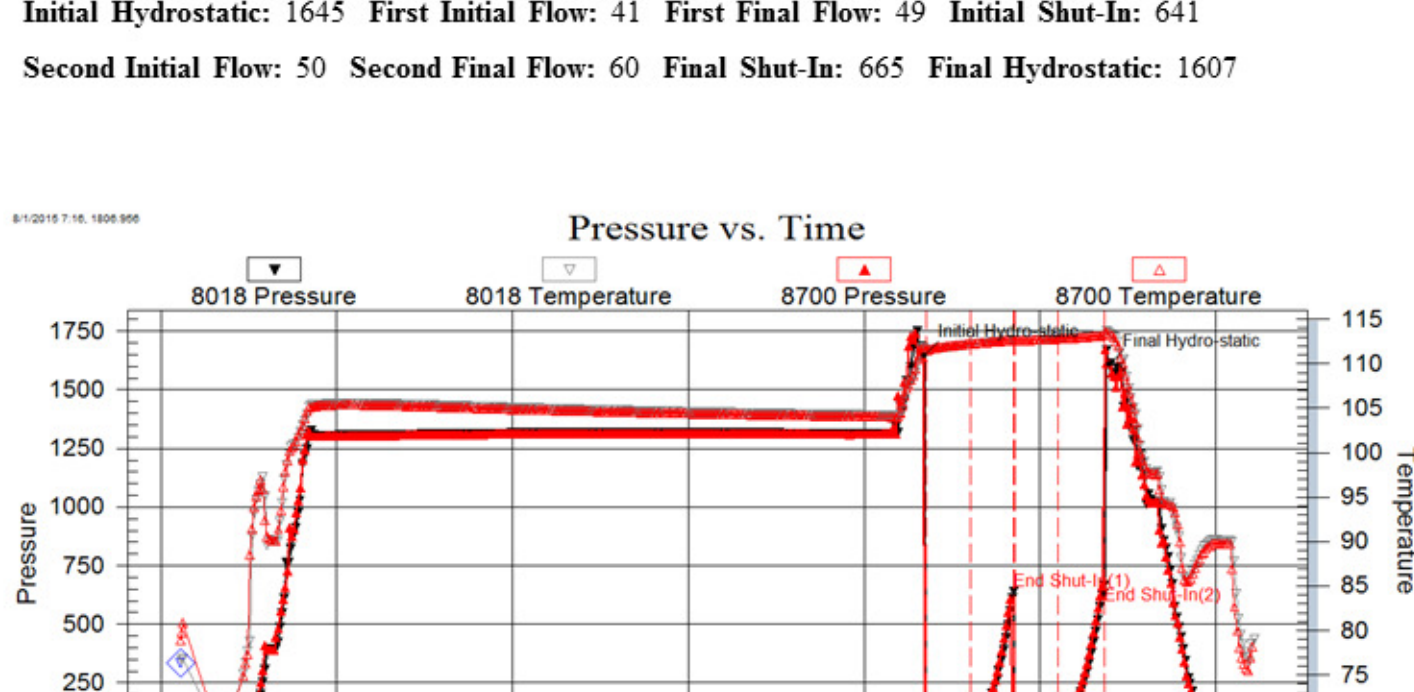
Blow Description: IFF: Weak Blow Thru Out 1/8 to 1/2" Blow **ISI:** No Blow Back **FFP:** Weak Blow Thru Out 1/2" to 1" Blow **FSI:** No Blow Back

Rec: 90 GIP, 30 Feet of O&GCM 5% Gas 10% Oil 85% Mud, 60 Feet of MGO 40% Gas 40% Oil 20% Mud **Rec. Total:** 90', **BHT:** 113 Gravity: N/A

Initial Hydrostatic: 1645 **First Initial Flow:** 41 **First Final Flow:** 49 **Initial Shut-In:** 641

Second Initial Flow: 50 **Second Final Flow:** 60 **Final Shut-In:** 665 **Final Hydrostatic:** 1607

Pressure vs. Time



Gauge 8018: Displaying every 9 points.

Well Name & No.: Marlene #1 **Company:** Hess Oil Co. **Test No.:** 7 **Interval Tested:** 3643 - 3670

Zone Tested: Arbuckle **Times:** 30-30-30-30

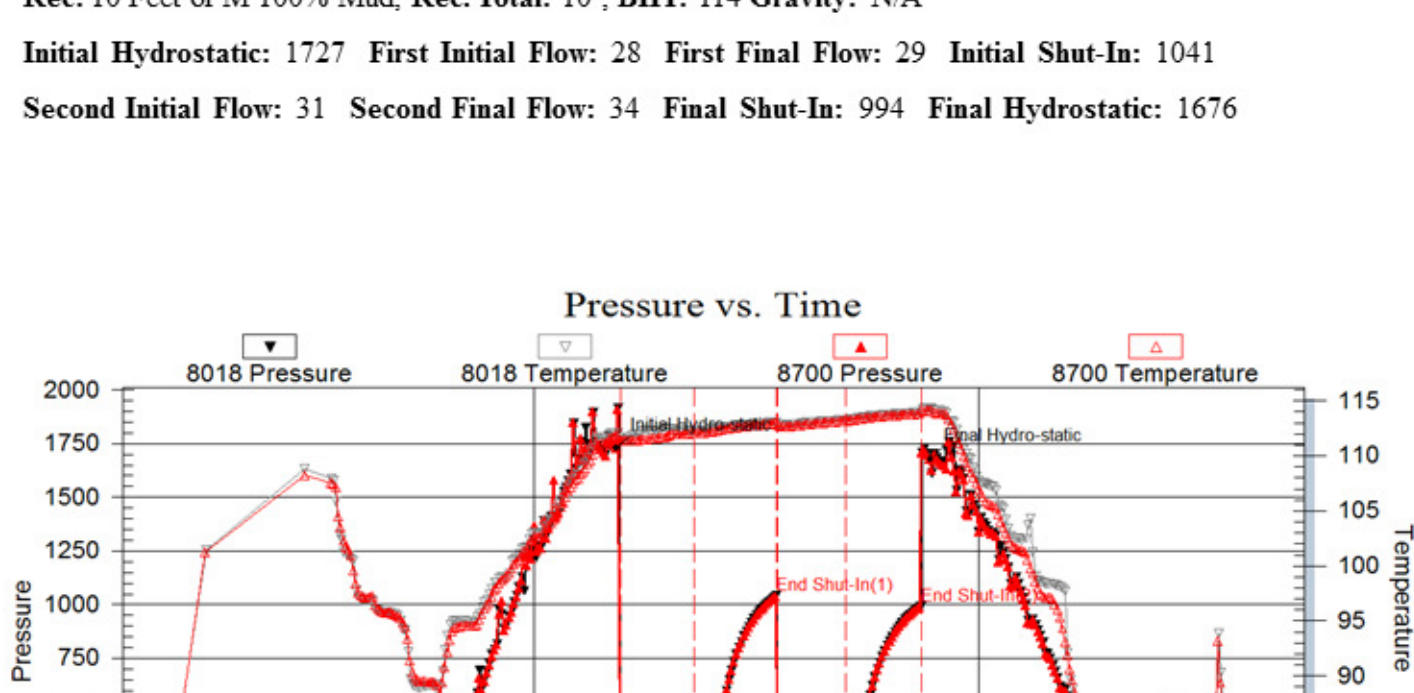
Blow Description: IFF: Surface Blow Died in 5 Min. **ISI:** No Blow Back **FFP:** No Blow **FSI:** No Blow Back

Rec: 10 Feet of M 100% Mud, **Rec. Total:** 10', **BHT:** 114 Gravity: N/A

Initial Hydrostatic: 1727 **First Initial Flow:** 28 **First Final Flow:** 29 **Initial Shut-In:** 1041

Second Initial Flow: 31 **Second Final Flow:** 34 **Final Shut-In:** 994 **Final Hydrostatic:** 1676

Pressure vs. Time



Gauge 8018: Displaying every 4 points.

Well Name & No.: Marlene #1 **Company:** Hess Oil Co. **Test No.:** 8 **Interval Tested:** 3643 - 3675

Zone Tested: Arbuckle **Times:** 30-30-30-30

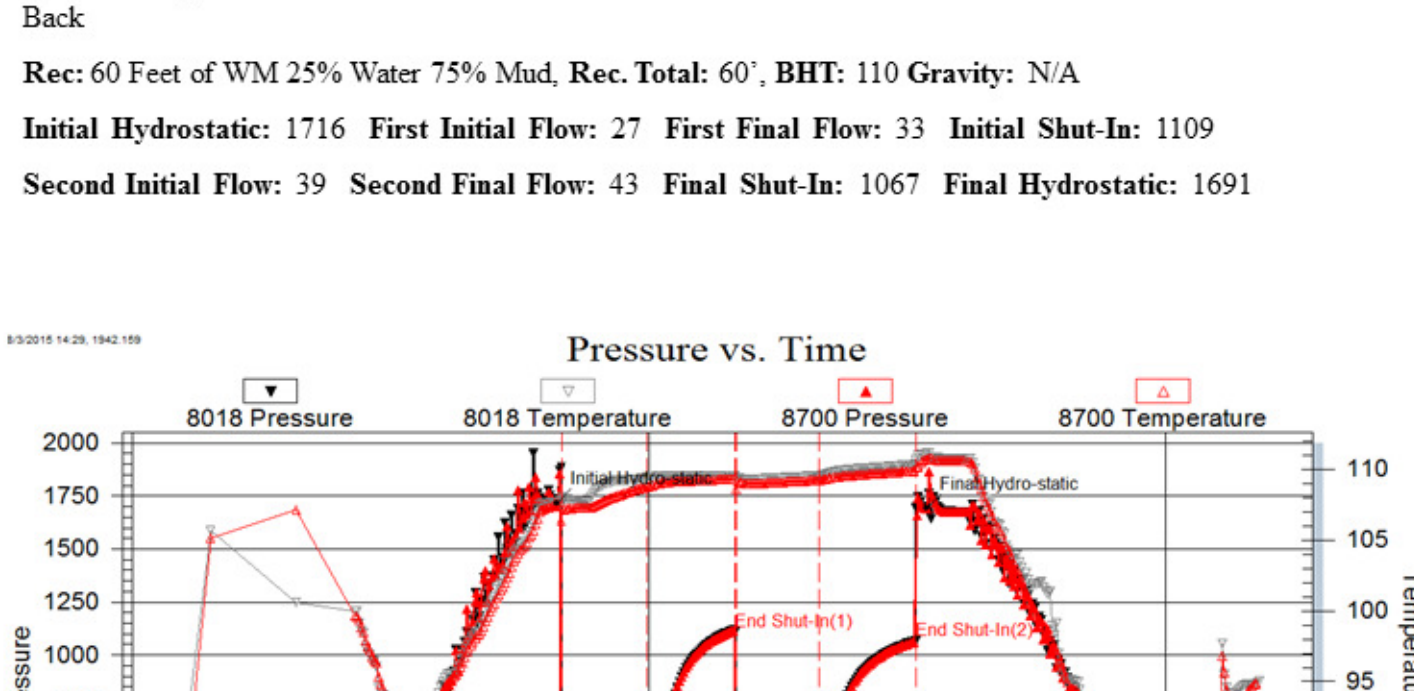
Blow Description: IFF: Weak Blow Thru Out 1/4" Blow **ISI:** No Blow Back **FFP:** No Blow **FSI:** No Blow Back

Rec: 60 Feet of WM 25% Water 75% Mud, **Rec. Total:** 60', **BHT:** 110 Gravity: N/A

Initial Hydrostatic: 1716 **First Initial Flow:** 27 **First Final Flow:** 33 **Initial Shut-In:** 1109

Second Initial Flow: 39 **Second Final Flow:** 43 **Final Shut-In:** 1067 **Final Hydrostatic:** 1691

Pressure vs. Time



Gauge 8018: Displaying every 3 points.

ROCK TYPES

Anhy	Bent	Clyst	Coal	Gyp	Igne	Lmst	Meta	Mrlst	Salt	Shale	Shcol	Shst	Siltst	Ss	Till
------	------	-------	------	-----	------	------	------	-------	------	-------	-------	------	--------	----	------

