

KIM B. SHOEMAKER
CONSULTING GEOLOGIST
316-884-9709 * WICHITA, KS

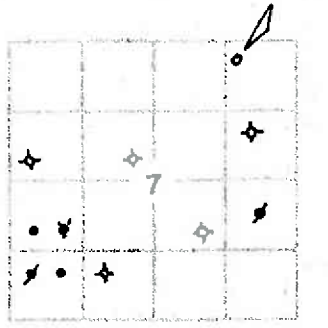
GEOLOGIST'S REPORT
DRILLING TIME AND SAMPLE LOG

COMPANY L. D. DRILLING, INC.
LEASE *1-7 SCHLESSIGER / HICKEL
FIELD WILDCAT
LOCATION 361' FNL & 1236' FEL
SEC 7 TWP 17s RGE 12W
COUNTY BARTON STATE KANSAS
CONTRACTOR ROYAL DRILLING
SPUD 8-4-15 COMP 8-11-15
RTD 3550 LTD 3553
MUD UP 2600 TYPE MUD CHEMICAL

ELEVATIONS
KB 1970
DF _____
CL 1964
Measurements Are All
From 1970 KB
CASING
SURFACE 8 5/8" @ 432'
PRODUCTION 5 1/2" @
ELECTRICAL SURVEYS
DUAL IND., DENS-N., MICRO

SAMPLES SAVED FROM 2800 TO 3550
DRILLING TIME KEPT FROM 2700 TO 3550
SAMPLES EXAMINED FROM 2800 TO 3550
GEOLOGICAL SUPERVISION FROM 3100 TO 3550
GEOLOGIST ON WELL KIM B. SHOEMAKER

FORMATION TOPS	LOG	SAMPLES
ANHYDRITE	858+1112	860+1110
BLANK	883+1087	885+1085
HOWARD	2770-800	2769-799
TOPEKA	2808-838	2808-838
HEEBNER	3094-1129	3093-1123
BROWN LIME	3184-1214	3182-1212
LANSING	3204-1234	3199-1229
B/KC	3430-1460	3428-1458
ARBUCKLE	3444-1474	3438-1468

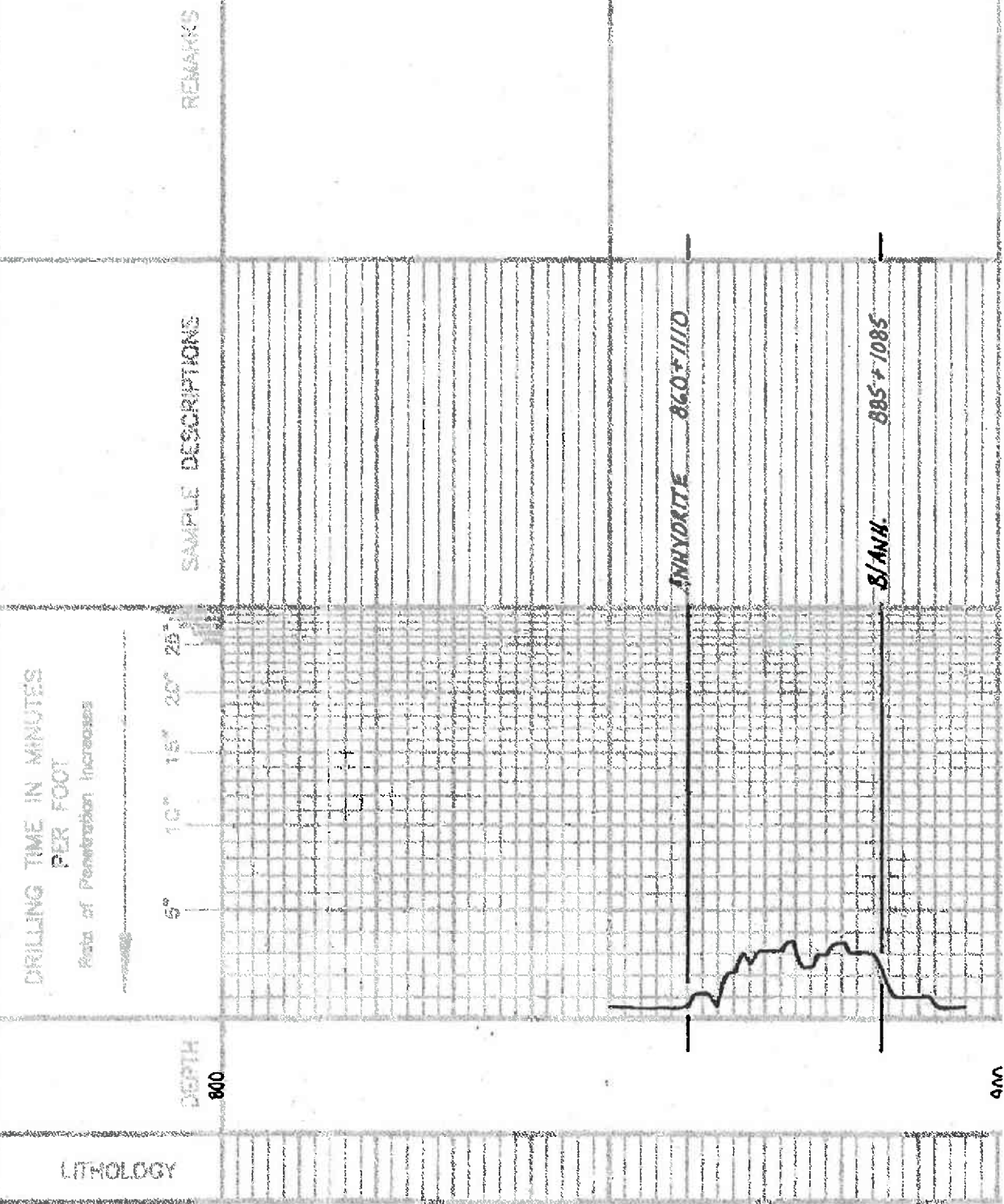


API: 15-009-26106

REMARKS
8-4-15 SPUD
8-5 @ 432'
8-4 @ 1500'
8-7 @ 2375'
8-8 @ 2955'
8-9 @ 3280'
8-10 @ 3424'
8-11 @ 3550'

LEGEND

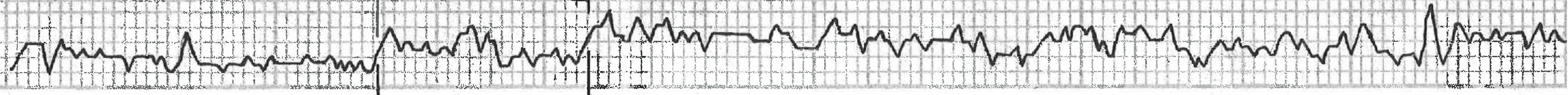
- Dolomite
- Chert
- Col. Lime
- Limestone
- Carb. sh.
- Shale
- Sandstone
- Salt
- Anhydrite



Vis. Co. WTR. 87

W.C. 102 CR 1000
@ 7632

2700



2800

2900

HOWARD 2769-791

Samples are logged

Sh. clay Silty

TOPEKA 2808-838

ls. clay. St. foss.

ls. wt. foss. St. foss. Srd

ls. wt. foss. Sh. clay

ls. wt. clay

ls. wt. foss. clay

Sh. clay

ls. clay. 150-160

ls. wt. foss. 1 in. foss.

St. clay

Sh. clay

ls. To. Aquat. St. foss.

Sh. clay

ls. To. clay. 1 St. foss.

Sh. clay

3000

3100

3200

3300

VIS: 47
WT: 9.2
NL: 8.8
CIR: 400

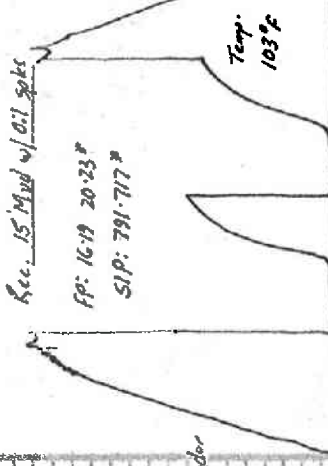
VIS: 50
WT: 3.4
NL: 2.8
CIR: 5000

TORONTO

PARIS

DST (1)

DST (2)



LS. T.OL. Bl. Sil. Pass.

Sh. Brk. G. A. 4.

LS. T.OL. and Sil. G. Lith.

LS. T.OL. Sil. Pass.

LS. T.OL. Bl. and

LS. wt. XSLI. Pass. Sil. Call.

LS. T.OL. VS. H. A.

LS. wt. Sil. Pass. w/ Fe. spots

HEEBNER 3093-1123
SH. BL. Cong.

LS. G. Bl. VS. Sil. Pass.

Sh. Sil. G.

LS. wt. VS. Sil. Pass. Sil. A.

Sh. H. Bl. R.

Sh. H. G. Sil. H.

Sh. H. G. Sil. H. Sil.

BROWN LIME 3182-1212

LS. G. Bl. VS. Sil. Pass.

Sh. Bl. G. Sil.

LANSING 3199-1212

LS. T.OL. and Sil. Pass. Sil. Pass.

LS. T.OL. Sil. Pass. Sil. Call. R. V. G. No Floor. No Oil.

LS. T.OL. Sil. Call.

Sh. Sil. G.

LS. wt. VS. Sil. Pass. Sil. Call. R. V. G. No Floor. No Oil.

LS. T.OL. Sil. Pass.

LS. H. Bl. R. Sil. Pass.

LS. H. Bl. R. Sil. Pass.

LS. wt. Sil. Pass. Sil. Call. R. V. G. No Floor. No Oil.

LS. G. Sil. Pass. w/ Bl. G. Pass.

Sh. Sil. G.

LS. G. VS. Sil. Pass.

LS. wt. Call.

LS. T.OL. and Sil. Pass. Sil. Pass. NS.

LS. wt. Call.

LS. Call. VS. Sil. Pass.

Sh. Bl. G.

Sh. Sil. G.

SL 6142

ES. wt. 144. 4.688. si. call

569

ES. wt. 144. 4.688. si. call
150000 Blow trial 10 min.
20000 No Blow

30-30-30-30

Rec. 15' Heavy Oil Saturated

Mud

ES. wt. 144. 4.688. si. call
150000 Blow trial 10 min.
20000 No Blow

ES. wt. 144. 4.688. si. call

Sh. 6. 61

ES. wt. 144. 4.688. si. call
150000 Blow trial 10 min.
20000 No Blow

3400

DST (3)

DST (2) 3122-3150

15000 Bottom bucket 10 min.

20000 " " 22 "

ES. 108°

SS. 88°

30-15-45-60

Rec. 310' CGO

FP: 25-80 92-140°

SIP: 780-669°

Temp. 108° F

BKIC 3122-1158

ES. wt. 144. 4.688. si. call
150000 Blow trial 10 min.
20000 No Blow

ES. wt. 144. 4.688. si. call

ES. wt. 144. 4.688. si. call

ES. wt. 144. 4.688. si. call

ES. wt. 144. 4.688. si. call

ES. wt. 144. 4.688. si. call

ES. wt. 144. 4.688. si. call

ES. wt. 144. 4.688. si. call

ES. wt. 144. 4.688. si. call

ES. wt. 144. 4.688. si. call

ES. wt. 144. 4.688. si. call

ES. wt. 144. 4.688. si. call

ES. wt. 144. 4.688. si. call

ES. wt. 144. 4.688. si. call

ES. wt. 144. 4.688. si. call

ES. wt. 144. 4.688. si. call

ES. wt. 144. 4.688. si. call

ES. wt. 144. 4.688. si. call

ES. wt. 144. 4.688. si. call

ES. wt. 144. 4.688. si. call

ES. wt. 144. 4.688. si. call

ES. wt. 144. 4.688. si. call

ES. wt. 144. 4.688. si. call

ES. wt. 144. 4.688. si. call

ES. wt. 144. 4.688. si. call

ES. wt. 144. 4.688. si. call

ES. wt. 144. 4.688. si. call

ES. wt. 144. 4.688. si. call

ES. wt. 144. 4.688. si. call

ES. wt. 144. 4.688. si. call

ES. wt. 144. 4.688. si. call

ES. wt. 144. 4.688. si. call

ES. wt. 144. 4.688. si. call

ES. wt. 144. 4.688. si. call

ES. wt. 144. 4.688. si. call

ES. wt. 144. 4.688. si. call

ES. wt. 144. 4.688. si. call

ES. wt. 144. 4.688. si. call

ES. wt. 144. 4.688. si. call

ES. wt. 144. 4.688. si. call

ES. wt. 144. 4.688. si. call

ES. wt. 144. 4.688. si. call

ES. wt. 144. 4.688. si. call

ES. wt. 144. 4.688. si. call

ES. wt. 144. 4.688. si. call

ES. wt. 144. 4.688. si. call

ES. wt. 144. 4.688. si. call

ES. wt. 144. 4.688. si. call

ES. wt. 144. 4.688. si. call

ES. wt. 144. 4.688. si. call

ES. wt. 144. 4.688. si. call

ES. wt. 144. 4.688. si. call

RTD 3550-1580

3500