



TEMPORARY ABANDONMENT WELL APPLICATION

OPERATOR: License# _____
 Name: _____
 Address 1: _____
 Address 2: _____
 City: _____ State: _____ Zip: _____ + _____
 Contact Person: _____
 Phone: (_____) _____
 Contact Person Email: _____
 Field Contact Person: _____
 Field Contact Person Phone: (_____) _____

API No. 15- _____
 Spot Description: _____
 _____ - _____ - _____ - _____ Sec. _____ Twp. _____ S. R. _____ E W
 _____ feet from N / S Line of Section
 _____ feet from E / W Line of Section
 GPS Location: Lat: _____, Long: _____
(e.g. xx.xxxxx) (e.g. -xxx.xxxxx)
 Datum: NAD27 NAD83 WGS84
 County: _____ Elevation: _____ GL KB
 Lease Name: _____ Well #: _____
 Well Type: (check one) Oil Gas OG WSW Other: _____
 SWD Permit #: _____ ENHR Permit #: _____
 Gas Storage Permit #: _____
 Spud Date: _____ Date Shut-In: _____

	Conductor	Surface	Production	Intermediate	Liner	Tubing
Size						
Setting Depth						
Amount of Cement						
Top of Cement						
Bottom of Cement						

Casing Fluid Level from Surface: _____ How Determined? _____ Date: _____

Casing Squeeze(s): _____ to _____ w / _____ sacks of cement, _____ to _____ w / _____ sacks of cement. Date: _____
(top) (bottom) (top) (bottom)

Do you have a valid Oil & Gas Lease? Yes No

Depth and Type: Junk in Hole at _____ Tools in Hole at _____ Casing Leaks: Yes No Depth of casing leak(s): _____
(depth) (depth)

Type Completion: ALT. I ALT. II Depth of: DV Tool: _____ w / _____ sacks of cement Port Collar: _____ w / _____ sack of cement
(depth) (depth)

Packer Type: _____ Size: _____ Inch Set at: _____ Feet

Total Depth: _____ Plug Back Depth: _____ Plug Back Method: _____

Geological Data:

Formation Name	Formation Top	Formation Base	Completion Information
1. _____	At: _____	to _____ Feet	Perforation Interval _____ to _____ Feet or Open Hole Interval _____ to _____ Feet
2. _____	At: _____	to _____ Feet	Perforation Interval _____ to _____ Feet or Open Hole Interval _____ to _____ Feet

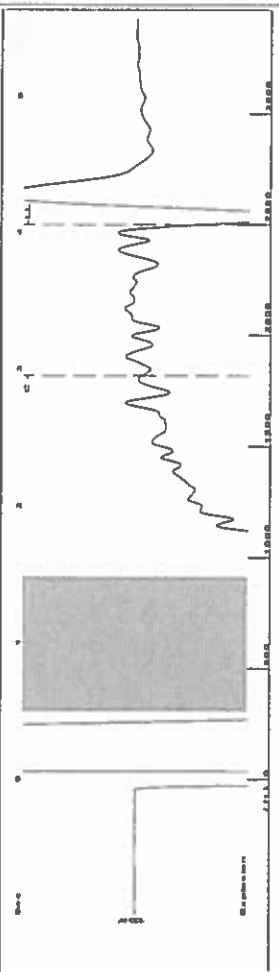
~~UNDER PENALTY OF PERJURY I HEREBY ATTEST THAT THE INFORMATION CONTAINED HEREIN IS TRUE AND CORRECT TO THE BEST OF MY KNOWLEDGE~~

Submitted Electronically

Do NOT Write in This Space - KCC USE ONLY	Date Tested: _____	Results: _____	Date Plugged: _____	Date Repaired: _____	Date Put Back in Service: _____
	Review Completed by: _____ Comments: _____				
TA Approved: <input type="checkbox"/> Yes <input type="checkbox"/> Denied Date: _____					

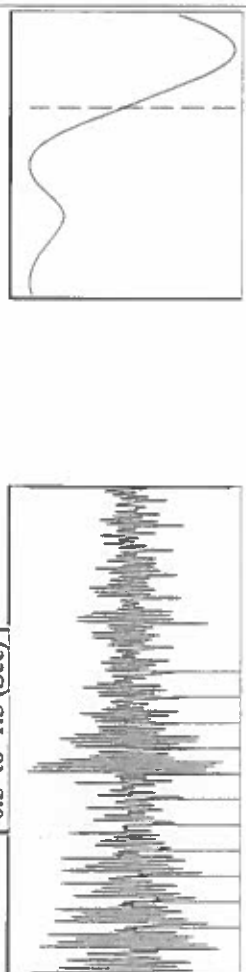
Mail to the Appropriate KCC Conservation Office:

	KCC District Office #1 - 210 E. Frontview, Suite A, Dodge City, KS 67801	Phone 620.225.8888
	KCC District Office #2 / UPGS - 3450 N. Rock Road, Building 600, Suite 601, Wichita, KS 67226	Phone 316.630.4000
	KCC District Office #3 - 1500 SW Seventh Steet, Chanute, KS 66720	Phone 620.432.2300
	KCC District Office #4 - 2301 E. 13th Street, Hays, KS 67601-2651	Phone 785.625.0550



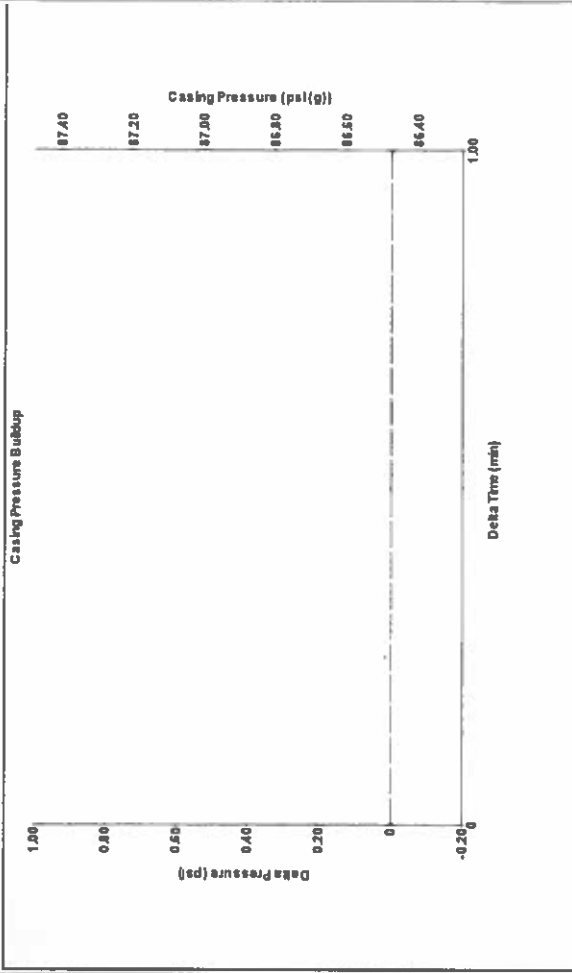
Filter Type High Pass Automatic Collar Count Yes Time 4.057 sec
 Manual Acoustic Veloc 1205.32 ft/s Manual JTS/sec 19.0114 Joints 78.8356 Jts
 Depth 2499.09 ft

0.5 to 1.5 (Sec)

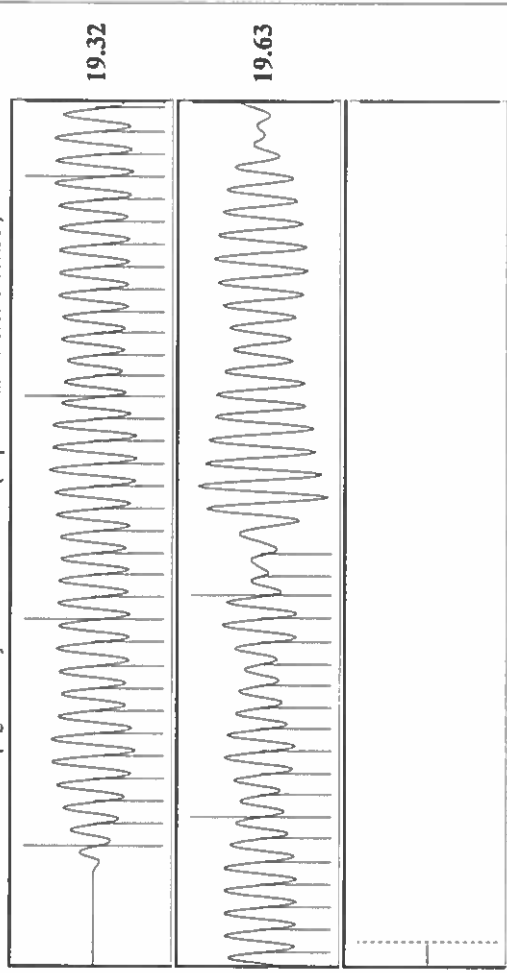


Analysis Method: Automatic

Production	Potential	Casing Pressure	Producing
Oil - * -	86.5 psi (g)	0 Mscf/D	Annular Gas Flow
Water - * -	-0.001 psi	% Liquid	100 %
Gas - * -	1.00 min		
IPR Method Vogel	Gas/Liquid Interface Pressure		Pump Intake
PBHP/SBHP - * -	93.2 psi (g)		137.0 psi (g)
Production Efficiency 0.0			Producing BHP
Oil 40 deg API	Liquid Level Depth		93.1 psi (g)
Water 1.05 Sp.Gr.H2O	2499.09 ft		Static BHP
Gas 0.76 Sp.Gr.AIR	Pump Intake Depth		- * - psi (g)
Acoustic Velocity 1231.99 ft/s	2629.00 ft		
	Formation Depth		
	2482.00 ft		
Formation Submergence			
Total Gaseous Liquid Column HT (TVD)	130 ft		
Equivalent Gas Free Liquid HT (TVD)	130 ft		
Acoustic Test			



Change in Pressure -0.00 psi PT8746 Range
 Change in Time 1.00 min



Acoustic Velocity 1231.99 ft/s Joints counted 52
 Joints Per Second 19.432 Jts/sec 78.8356
 Depth to liquid level 2499.09 ft Filter Width 17.0114
 Automatic Collar Count Yes Time to 1st Collar 0.276 2.952

Conservation Division
District Office No. 1
210 E. Frontview, Suite A
Dodge City, KS 67801



Phone: 620-225-8888
Fax: 620-225-8885
<http://kcc.ks.gov/>

Shari Feist Albrecht, Chair
Jay Scott Emler, Commissioner
Pat Apple, Commissioner

Sam Brownback, Governor

September 08, 2015

Katherine MCClurkan
Merit Energy Company, LLC
13727 NOEL RD STE 1200
DALLAS, TX 75240

Re: Temporary Abandonment
API 15-093-00065-00-00
SCHAAF A 1
NE/4 Sec.02-23S-35W
Kearny County, Kansas

Dear Katherine MCClurkan:

"Your temporary abandonment (TA) application for the well listed above has been approved. In accordance with K.A.R. 82-3-111 the TA status of this well will expire 09/08/2016.

- * If you return this well to service or plug it, please notify the District Office.
- * If you sell this well you are required to file a Transfer of Operator form, T-1.
- * If the well will remain temporarily abandoned, you must submit a new TA application, CP-111, before 09/08/2016.

You may contact me at the number above if you have questions.

Very truly yours,

Michael Maier"