



# TEMPORARY ABANDONMENT WELL APPLICATION

OPERATOR: License# \_\_\_\_\_  
 Name: \_\_\_\_\_  
 Address 1: \_\_\_\_\_  
 Address 2: \_\_\_\_\_  
 City: \_\_\_\_\_ State: \_\_\_\_\_ Zip: \_\_\_\_\_ + \_\_\_\_\_  
 Contact Person: \_\_\_\_\_  
 Phone: ( \_\_\_\_\_ ) \_\_\_\_\_  
 Contact Person Email: \_\_\_\_\_  
 Field Contact Person: \_\_\_\_\_  
 Field Contact Person Phone: ( \_\_\_\_\_ ) \_\_\_\_\_

API No. 15- \_\_\_\_\_  
 Spot Description: \_\_\_\_\_  
 \_\_\_\_\_ - \_\_\_\_\_ - \_\_\_\_\_ - \_\_\_\_\_ Sec. \_\_\_\_\_ Twp. \_\_\_\_\_ S. R. \_\_\_\_\_  E  W  
 \_\_\_\_\_ feet from  N /  S Line of Section  
 \_\_\_\_\_ feet from  E /  W Line of Section  
 GPS Location: Lat: \_\_\_\_\_, Long: \_\_\_\_\_  
(e.g. xx.xxxxx) (e.g. -xxx.xxxxx)  
 Datum:  NAD27  NAD83  WGS84  
 County: \_\_\_\_\_ Elevation: \_\_\_\_\_  GL  KB  
 Lease Name: \_\_\_\_\_ Well #: \_\_\_\_\_  
 Well Type: (check one)  Oil  Gas  OG  WSW  Other: \_\_\_\_\_  
 SWD Permit #: \_\_\_\_\_  ENHR Permit #: \_\_\_\_\_  
 Gas Storage Permit #: \_\_\_\_\_  
 Spud Date: \_\_\_\_\_ Date Shut-In: \_\_\_\_\_

	Conductor	Surface	Production	Intermediate	Liner	Tubing
Size						
Setting Depth						
Amount of Cement						
Top of Cement						
Bottom of Cement						

Casing Fluid Level from Surface: \_\_\_\_\_ How Determined? \_\_\_\_\_ Date: \_\_\_\_\_

Casing Squeeze(s): \_\_\_\_\_ to \_\_\_\_\_ w / \_\_\_\_\_ sacks of cement, \_\_\_\_\_ to \_\_\_\_\_ w / \_\_\_\_\_ sacks of cement. Date: \_\_\_\_\_  
(top) (bottom) (top) (bottom)

Do you have a valid Oil & Gas Lease?  Yes  No

Depth and Type:  Junk in Hole at \_\_\_\_\_  Tools in Hole at \_\_\_\_\_ Casing Leaks:  Yes  No Depth of casing leak(s): \_\_\_\_\_  
(depth) (depth)

Type Completion:  ALT. I  ALT. II Depth of:  DV Tool: \_\_\_\_\_ w / \_\_\_\_\_ sacks of cement  Port Collar: \_\_\_\_\_ w / \_\_\_\_\_ sack of cement  
(depth) (depth)

Packer Type: \_\_\_\_\_ Size: \_\_\_\_\_ Inch Set at: \_\_\_\_\_ Feet

Total Depth: \_\_\_\_\_ Plug Back Depth: \_\_\_\_\_ Plug Back Method: \_\_\_\_\_

**Geological Data:**

Formation Name	Formation Top	Formation Base	Completion Information
1. _____	At: _____	to _____ Feet	Perforation Interval _____ to _____ Feet or Open Hole Interval _____ to _____ Feet
2. _____	At: _____	to _____ Feet	Perforation Interval _____ to _____ Feet or Open Hole Interval _____ to _____ Feet

~~UNDER PENALTY OF PERJURY I HEREBY ATTEST THAT THE INFORMATION CONTAINED HEREIN IS TRUE AND CORRECT TO THE BEST OF MY KNOWLEDGE~~

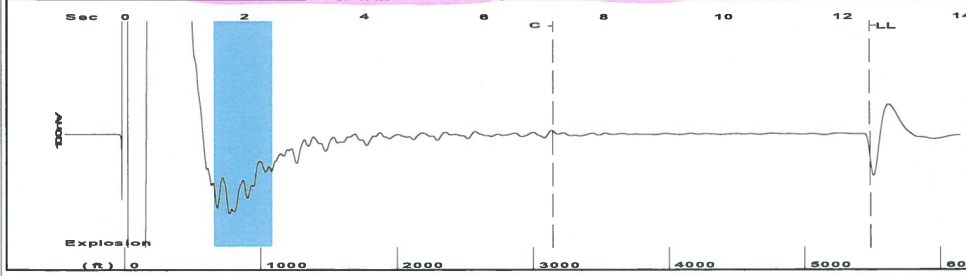
Submitted Electronically

<b>Do NOT Write in This Space - KCC USE ONLY</b>	Date Tested: _____	Results: _____	Date Plugged: _____	Date Repaired: _____	Date Put Back in Service: _____
	Review Completed by: _____ Comments: _____				
TA Approved: <input type="checkbox"/> Yes <input type="checkbox"/> Denied Date: _____					

**Mail to the Appropriate KCC Conservation Office:**

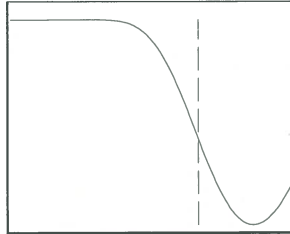
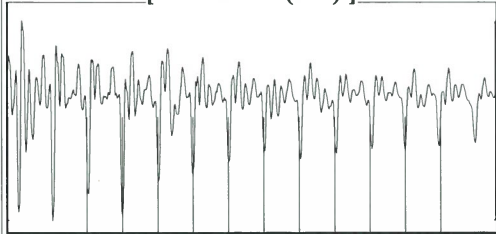
	KCC District Office #1 - 210 E. Frontview, Suite A, Dodge City, KS 67801	Phone 620.225.8888
	KCC District Office #2 / UPGS - 3450 N. Rock Road, Building 600, Suite 601, Wichita, KS 67226	Phone 316.630.4000
	KCC District Office #3 - 1500 SW Seventh Steet, Chanute, KS 66720	Phone 620.432.2300
	KCC District Office #4 - 2301 E. 13th Street, Hays, KS 67601-2651	Phone 785.625.0550

Group: TA'D WELLS Well: YEAGER B-4 (acquired on: 09/10/15 09:42:25 )



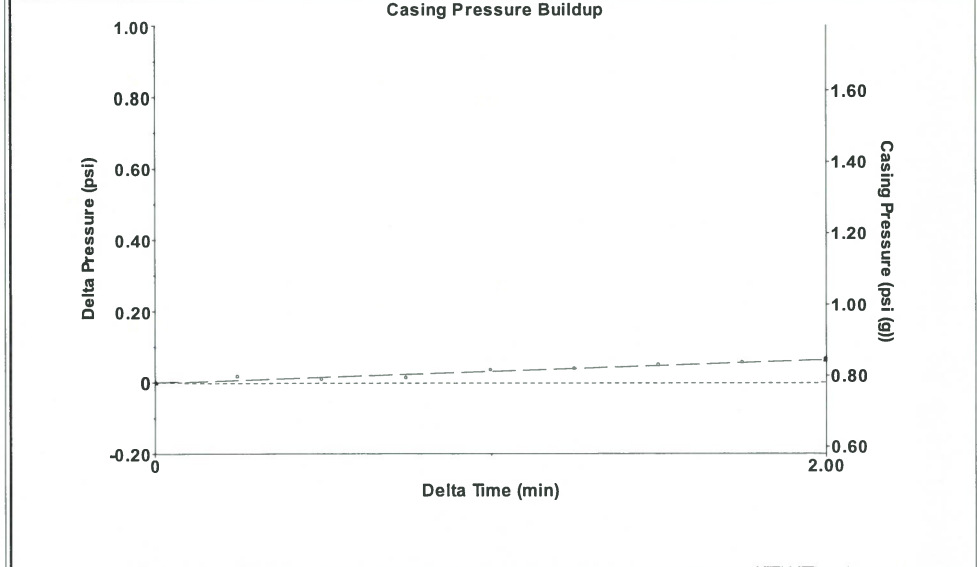
Filter Type High Pass Automatic Collar Count Yes Time 12.475 sec  
 Manual Acoustic Velo 875.691 ft/s Manual JTS/sec 13.8122 Joints 172.96 Jts  
 Depth 5482.85 ft

[ 1.5 to 2.5 (Sec) ]



Analysis Method: Automatic

Group: TA'D WELLS Well: YEAGER B-4 (acquired on: 09/10/15 09:42:25 )



Change in Pressure 0.06 psi PT10411  
 Change in Time 2.00 min Range 0 - ? psi

Group: TA'D WELLS Well: YEAGER B-4 (acquired on: 09/10/15 09:42:25 )

Production			Casing Pressure	Producing
Current	Potential		0.8 psi (g)	
Oil - * -	- * - BBL/D		Casing Pressure Buildup	Annular
Water - * -	- * - BBL/D		0.064 psi	Gas Flow
Gas - * -	- * - Mscf/D		2.00 min	2 Mscf/D
IPR Method	Vogel		Gas/Liquid Interface Pressure	% Liquid
PBHP/SBHP	- * -		4.2 psi (g)	93 %
Production Efficiency	0.0		Liquid Level Depth	
Oil 40 deg.API			5482.85 ft	
Water 1.05 Sp.Gr.H2O			Pump Intake Depth	
Gas 1.10 Sp.Gr.AIR			5555.00 ft	
Acoustic Velocity	879.013 ft/s		Formation Depth	
			5935.00 ft	

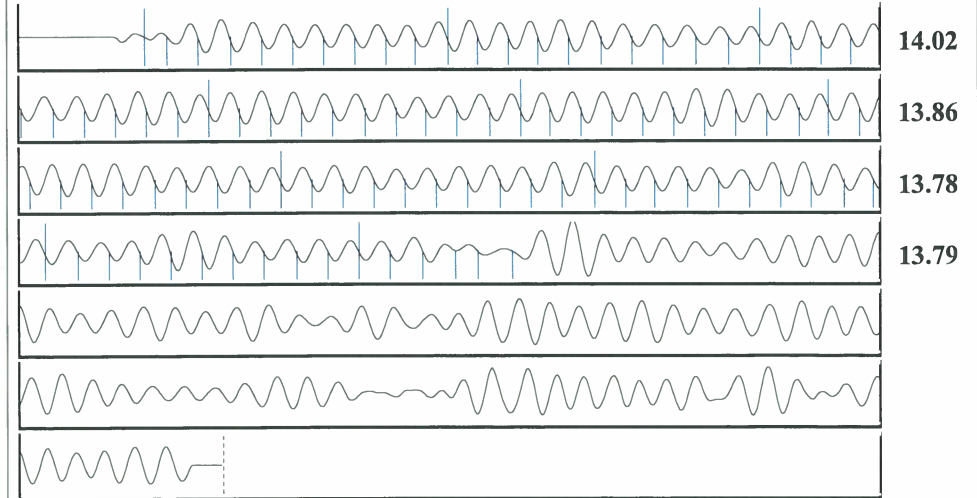


Pump Intake 27.4 psi (g)  
 Producing BHP 190.9 psi (g)  
 Static BHP - \* - psi (g)

Formation Submergence  
 Total Gaseous Liquid Column HT (TVD) 72 ft  
 Equivalent Gas Free Liquid HT (TVD) 67 ft

Acoustic Test

Group: TA'D WELLS Well: YEAGER B-4 (acquired on: 09/10/15 09:42:25 )



Acoustic Velocity	879.013 ft/s	Joints counted	95
Joints Per Second	13.8646 jts/sec	Joints to liquid level	172.96
Depth to liquid level	5482.85 ft	Filter Width	11.8122 15.8122
Automatic Collar Count	Yes	Time to 1st Collar	0.292 7.144

Conservation Division  
District Office No. 1  
210 E. Frontview, Suite A  
Dodge City, KS 67801



Phone: 620-225-8888  
Fax: 620-225-8885  
<http://kcc.ks.gov/>

Shari Feist Albrecht, Chair  
Jay Scott Emler, Commissioner  
Pat Apple, Commissioner

Sam Brownback, Governor

September 14, 2015

Katherine McClurkan  
Merit Energy Company, LLC  
13727 NOEL RD STE 1200  
DALLAS, TX 75240

Re: Temporary Abandonment  
API 15-129-21057-00-00  
YEAGER B 4  
NW/4 Sec.05-32S-39W  
Morton County, Kansas

Dear Katherine McClurkan:

"Your temporary abandonment (TA) application for the well listed above has been approved. In accordance with K.A.R. 82-3-111 the TA status of this well will expire 09/14/2016.

- \* If you return this well to service or plug it, please notify the District Office.
- \* If you sell this well you are required to file a Transfer of Operator form, T-1.
- \* If the well will remain temporarily abandoned, you must submit a new TA application, CP-111, before 09/14/2016.

You may contact me at the number above if you have questions.

Very truly yours,

Michael Maier"