



# TEMPORARY ABANDONMENT WELL APPLICATION

OPERATOR: License# \_\_\_\_\_  
 Name: \_\_\_\_\_  
 Address 1: \_\_\_\_\_  
 Address 2: \_\_\_\_\_  
 City: \_\_\_\_\_ State: \_\_\_\_\_ Zip: \_\_\_\_\_ + \_\_\_\_\_  
 Contact Person: \_\_\_\_\_  
 Phone: ( \_\_\_\_\_ ) \_\_\_\_\_  
 Contact Person Email: \_\_\_\_\_  
 Field Contact Person: \_\_\_\_\_  
 Field Contact Person Phone: ( \_\_\_\_\_ ) \_\_\_\_\_

API No. 15- \_\_\_\_\_  
 Spot Description: \_\_\_\_\_  
 \_\_\_\_\_ - \_\_\_\_\_ - \_\_\_\_\_ - \_\_\_\_\_ Sec. \_\_\_\_\_ Twp. \_\_\_\_\_ S. R. \_\_\_\_\_  E  W  
 \_\_\_\_\_ feet from  N /  S Line of Section  
 \_\_\_\_\_ feet from  E /  W Line of Section  
 GPS Location: Lat: \_\_\_\_\_, Long: \_\_\_\_\_  
(e.g. xx.xxxxx) (e.g. -xxx.xxxxx)  
 Datum:  NAD27  NAD83  WGS84  
 County: \_\_\_\_\_ Elevation: \_\_\_\_\_  GL  KB  
 Lease Name: \_\_\_\_\_ Well #: \_\_\_\_\_  
 Well Type: (check one)  Oil  Gas  OG  WSW  Other: \_\_\_\_\_  
 SWD Permit #: \_\_\_\_\_  ENHR Permit #: \_\_\_\_\_  
 Gas Storage Permit #: \_\_\_\_\_  
 Spud Date: \_\_\_\_\_ Date Shut-In: \_\_\_\_\_

	Conductor	Surface	Production	Intermediate	Liner	Tubing
Size						
Setting Depth						
Amount of Cement						
Top of Cement						
Bottom of Cement						

Casing Fluid Level from Surface: \_\_\_\_\_ How Determined? \_\_\_\_\_ Date: \_\_\_\_\_

Casing Squeeze(s): \_\_\_\_\_ to \_\_\_\_\_ w / \_\_\_\_\_ sacks of cement, \_\_\_\_\_ to \_\_\_\_\_ w / \_\_\_\_\_ sacks of cement. Date: \_\_\_\_\_  
(top) (bottom) (top) (bottom)

Do you have a valid Oil & Gas Lease?  Yes  No

Depth and Type:  Junk in Hole at \_\_\_\_\_  Tools in Hole at \_\_\_\_\_ Casing Leaks:  Yes  No Depth of casing leak(s): \_\_\_\_\_  
(depth) (depth)

Type Completion:  ALT. I  ALT. II Depth of:  DV Tool: \_\_\_\_\_ w / \_\_\_\_\_ sacks of cement  Port Collar: \_\_\_\_\_ w / \_\_\_\_\_ sack of cement  
(depth) (depth)

Packer Type: \_\_\_\_\_ Size: \_\_\_\_\_ Inch Set at: \_\_\_\_\_ Feet

Total Depth: \_\_\_\_\_ Plug Back Depth: \_\_\_\_\_ Plug Back Method: \_\_\_\_\_

**Geological Data:**

Formation Name	Formation Top	Formation Base	Completion Information
1. _____	At: _____	to _____ Feet	Perforation Interval _____ to _____ Feet or Open Hole Interval _____ to _____ Feet
2. _____	At: _____	to _____ Feet	Perforation Interval _____ to _____ Feet or Open Hole Interval _____ to _____ Feet

~~UNDER PENALTY OF PERJURY I HEREBY ATTEST THAT THE INFORMATION CONTAINED HEREIN IS TRUE AND CORRECT TO THE BEST OF MY KNOWLEDGE~~

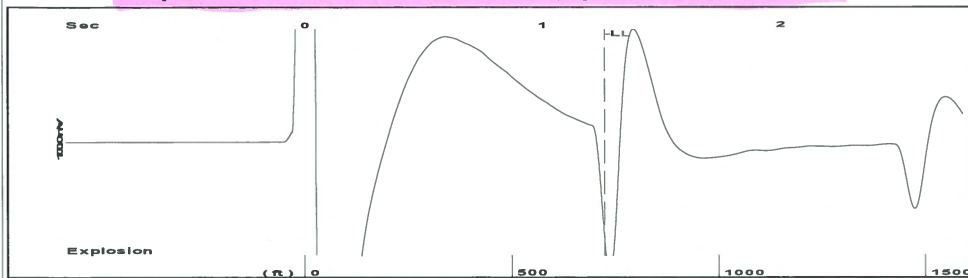
Submitted Electronically

<b>Do NOT Write in This Space - KCC USE ONLY</b>	Date Tested: _____	Results: _____	Date Plugged: _____	Date Repaired: _____	Date Put Back in Service: _____
	Review Completed by: _____ Comments: _____				
TA Approved: <input type="checkbox"/> Yes <input type="checkbox"/> Denied Date: _____					

**Mail to the Appropriate KCC Conservation Office:**

	KCC District Office #1 - 210 E. Frontview, Suite A, Dodge City, KS 67801	Phone 620.225.8888
	KCC District Office #2 / UPGS - 3450 N. Rock Road, Building 600, Suite 601, Wichita, KS 67226	Phone 316.630.4000
	KCC District Office #3 - 1500 SW Seventh Steet, Chanute, KS 66720	Phone 620.432.2300
	KCC District Office #4 - 2301 E. 13th Street, Hays, KS 67601-2651	Phone 785.625.0550

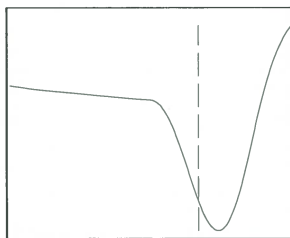
Group: TA'D WELLS Well: CENTRAL LIFE B-2 (acquired on: 09/10/15 10:24:44)



Time 1.259 sec  
 Joints 22.9381 Jts  
 Depth 723.92 ft

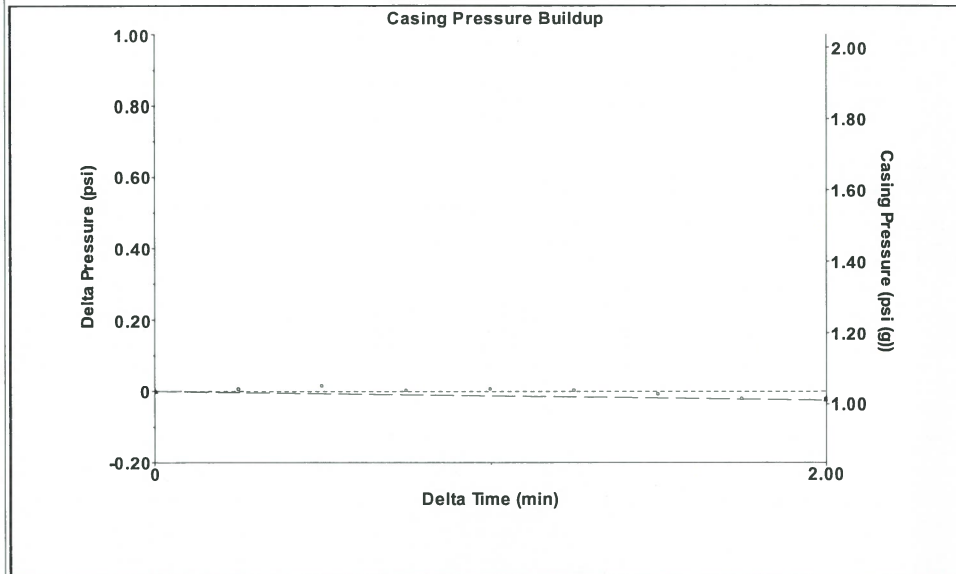
Liquid level calculated with user supplied Acoustic Velocity

Acoustic Velocity 1150 ft/s



**Analysis Method: Acoustic Velocity**

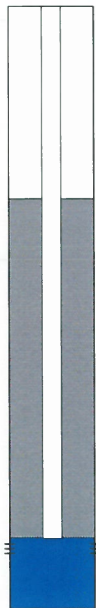
Group: TA'D WELLS Well: CENTRAL LIFE B-2 (acquired on: 09/10/15 10:24:44)



Change in Pressure -0.02 psi PT10411  
 Change in Time 2.00 min Range 0 - ? psi

Group: TA'D WELLS Well: CENTRAL LIFE B-2 (acquired on: 09/10/15 10:24:44)

Production					
Current	Potential	Casing Pressure		Producing	
Oil - * -	- * - BBL/D	1.0 psi (g)		Annular	
Water - * -	- * - BBL/D	Casing Pressure Buildup		Gas Flow	
Gas - * -	- * - Mscf/D	-0.023 psi		0 Mscf/D	
		2.00 min		% Liquid	
IPR Method	Vogel	Gas/Liquid Interface Pressure		100 %	
PBHP/SBHP	- * -	1.4 psi (g)			
Production Efficiency	0.0				
		Liquid Level Depth			
Oil 40 deg.API		723.92 ft			
Water 1.05 Sp.Gr.H2O					
Gas 0.85 Sp.Gr.AIR		Pump Intake Depth			
		2588.00 ft			
Acoustic Velocity	1150 ft/s	Formation Depth			
		2645.00 ft			
Formation Submergence				Pump Intake	
Total Gaseous Liquid Column HT (TVD)	1864 ft			628.0 psi (g)	
Equivalent Gas Free Liquid HT (TVD)	1864 ft			Producing BHP	
				653.9 psi (g)	
Acoustic Test				Static BHP	
				- * - psi (g)	



Group: TA'D WELLS Well: CENTRAL LIFE B-2 (acquired on: 09/10/15 10:24:44)

**Entered Acoustic Velocity for Liquid Level depth determination**

Conservation Division  
District Office No. 1  
210 E. Frontview, Suite A  
Dodge City, KS 67801



Phone: 620-225-8888  
Fax: 620-225-8885  
<http://kcc.ks.gov/>

Shari Feist Albrecht, Chair  
Jay Scott Emler, Commissioner  
Pat Apple, Commissioner

Sam Brownback, Governor

September 14, 2015

Katherine McClurkan  
Merit Energy Company, LLC  
13727 NOEL RD STE 1200  
DALLAS, TX 75240

Re: Temporary Abandonment  
API 15-129-21145-00-00  
CENTRAL LIFE B 2  
SE/4 Sec.07-34S-40W  
Morton County, Kansas

Dear Katherine McClurkan:

"Your temporary abandonment (TA) application for the well listed above has been approved. In accordance with K.A.R. 82-3-111 the TA status of this well will expire 09/14/2016.

- \* If you return this well to service or plug it, please notify the District Office.
- \* If you sell this well you are required to file a Transfer of Operator form, T-1.
- \* If the well will remain temporarily abandoned, you must submit a new TA application, CP-111, before 09/14/2016.

You may contact me at the number above if you have questions.

Very truly yours,

Michael Maier"