



TEMPORARY ABANDONMENT WELL APPLICATION

OPERATOR: License# _____
 Name: _____
 Address 1: _____
 Address 2: _____
 City: _____ State: _____ Zip: _____ + _____
 Contact Person: _____
 Phone: (_____) _____
 Contact Person Email: _____
 Field Contact Person: _____
 Field Contact Person Phone: (_____) _____

API No. 15- _____
 Spot Description: _____
 _____ - _____ - _____ - _____ Sec. _____ Twp. _____ S. R. _____ E W
 _____ feet from N / S Line of Section
 _____ feet from E / W Line of Section
 GPS Location: Lat: _____, Long: _____
(e.g. xx.xxxxx) (e.g. -xxx.xxxxx)
 Datum: NAD27 NAD83 WGS84
 County: _____ Elevation: _____ GL KB
 Lease Name: _____ Well #: _____
 Well Type: (check one) Oil Gas OG WSW Other: _____
 SWD Permit #: _____ ENHR Permit #: _____
 Gas Storage Permit #: _____
 Spud Date: _____ Date Shut-In: _____

	Conductor	Surface	Production	Intermediate	Liner	Tubing
Size						
Setting Depth						
Amount of Cement						
Top of Cement						
Bottom of Cement						

Casing Fluid Level from Surface: _____ How Determined? _____ Date: _____

Casing Squeeze(s): _____ to _____ w / _____ sacks of cement, _____ to _____ w / _____ sacks of cement. Date: _____
(top) (bottom) (top) (bottom)

Do you have a valid Oil & Gas Lease? Yes No

Depth and Type: Junk in Hole at _____ Tools in Hole at _____ Casing Leaks: Yes No Depth of casing leak(s): _____
(depth) (depth)

Type Completion: ALT. I ALT. II Depth of: DV Tool: _____ w / _____ sacks of cement Port Collar: _____ w / _____ sack of cement
(depth) (depth)

Packer Type: _____ Size: _____ Inch Set at: _____ Feet

Total Depth: _____ Plug Back Depth: _____ Plug Back Method: _____

Geological Data:

Formation Name	Formation Top	Formation Base	Completion Information
1. _____	At: _____	to _____ Feet	Perforation Interval _____ to _____ Feet or Open Hole Interval _____ to _____ Feet
2. _____	At: _____	to _____ Feet	Perforation Interval _____ to _____ Feet or Open Hole Interval _____ to _____ Feet

~~UNDER PENALTY OF PERJURY I HEREBY ATTEST THAT THE INFORMATION CONTAINED HEREIN IS TRUE AND CORRECT TO THE BEST OF MY KNOWLEDGE~~

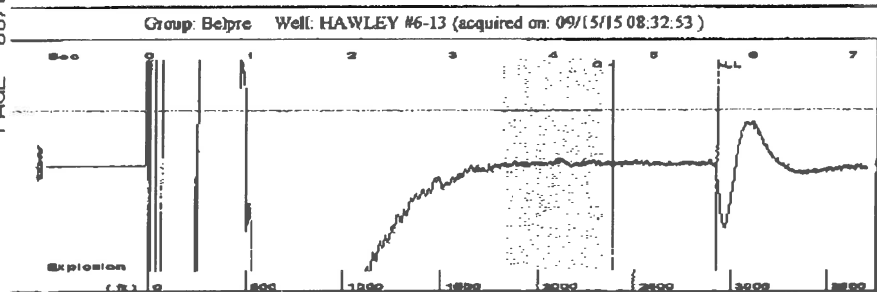
Submitted Electronically

Do NOT Write in This Space - KCC USE ONLY	Date Tested: _____	Results: _____	Date Plugged: _____	Date Repaired: _____	Date Put Back in Service: _____
	Review Completed by: _____ Comments: _____				
TA Approved: <input type="checkbox"/> Yes <input type="checkbox"/> Denied Date: _____					

Mail to the Appropriate KCC Conservation Office:

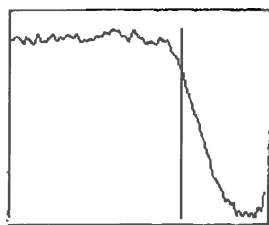
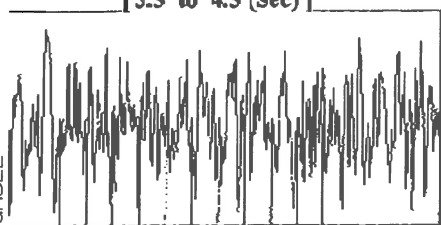
	KCC District Office #1 - 210 E. Frontview, Suite A, Dodge City, KS 67801	Phone 620.225.8888
	KCC District Office #2 / UPGS - 3450 N. Rock Road, Building 600, Suite 601, Wichita, KS 67226	Phone 316.630.4000
	KCC District Office #3 - 1500 SW Seventh Steet, Chanute, KS 66720	Phone 620.432.2300
	KCC District Office #4 - 2301 E. 13th Street, Hays, KS 67601-2651	Phone 785.625.0550

PAGE 06/08



Filter Type High Pass Automatic Collar Count Yes Time 5.645 sec
 Manual Acoustic Velocity 0.5127 ft/s Manual JTS/sec 16.9779 Joints 94.6017 Jts
 Depth 2928.87 ft

[3.5 to 4.5 (Sec)]

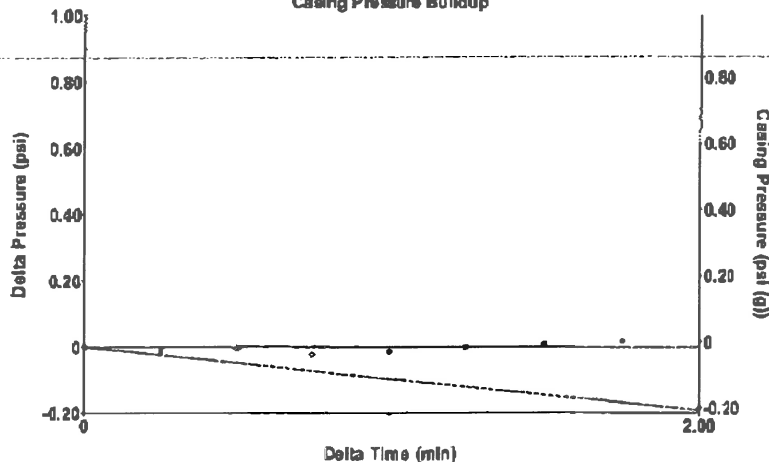


Analysis Method: Automatic



Group: Belpre Well: HAWLEY #6-13 (acquired on: 09/15/15 08:32:53)

Casing Pressure Buildup



Change in Pressure -0.19 psi FT13440
 Change in Time 2.00 min Range 0 -7 psi

FGHLL

Group: Belpre Well: HAWLEY #6-13 (acquired on: 09/15/15 08:32:53)

Production Current Potential
 Oil -*- BBL/D
 Water -*- BBL/D
 Gas -*- Mscf/D

IPR Method Vogel
 PBHP/SBHP -*-
 Production Efficiency 0.0

Oil 40 deg API
 Water 1.05 Sp.Gr.H2O
 Gas 0.94 Sp.Gr.AIR

Acoustic Velocity 1037.69 ft/s

Casing Pressure -0.0 psi (g)
 Casing Pressure Buildup -0.192 psi
 2.00 min
 Gas/Liquid Interface Pressure 1.4 psi (g)

Liquid Level Depth 2928.87 ft

Pump Intake Depth 4304.00 ft
 Formation Depth 4332.00 ft



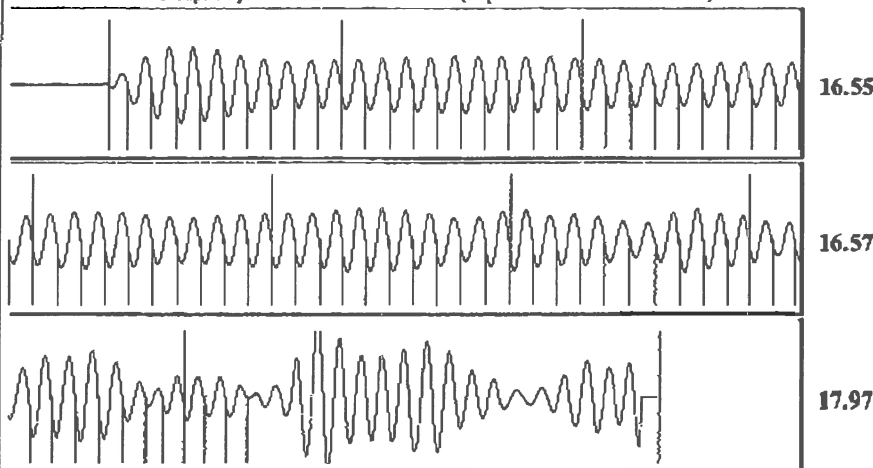
Producing Annular Gas Flow 0 Mscf/D
 % Liquid 100 %

Pump Intake 465.1 psi (g)
 Producing BHP 477.9 psi (g)
 Static BHP -*- psi (g)

Formation Submergence
 Total Gaseous Liquid Column HT (TVD) 1375 ft
 Equivalent Gas Free Liquid HT (TVD) 1375 ft

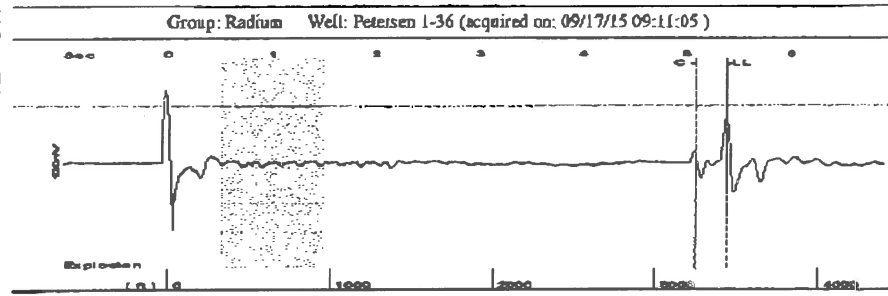
Acoustic Test

Group: Belpre Well: HAWLEY #6-13 (acquired on: 09/15/15 08:32:53)

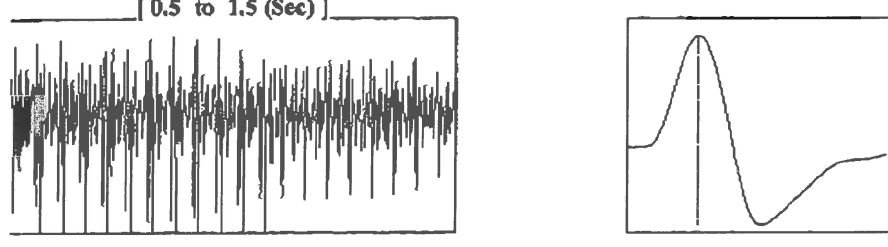


Acoustic Velocity 1037.69 ft/s Joints counted 73
 Joints Per Second 16.7585 jts/sec Joints to liquid level 94.6017
 Depth to liquid level 2928.87 ft Filter Width 14.9779 18.9779
 Automatic Collar Count Yes Time to 1st Collar 0.248 4.604

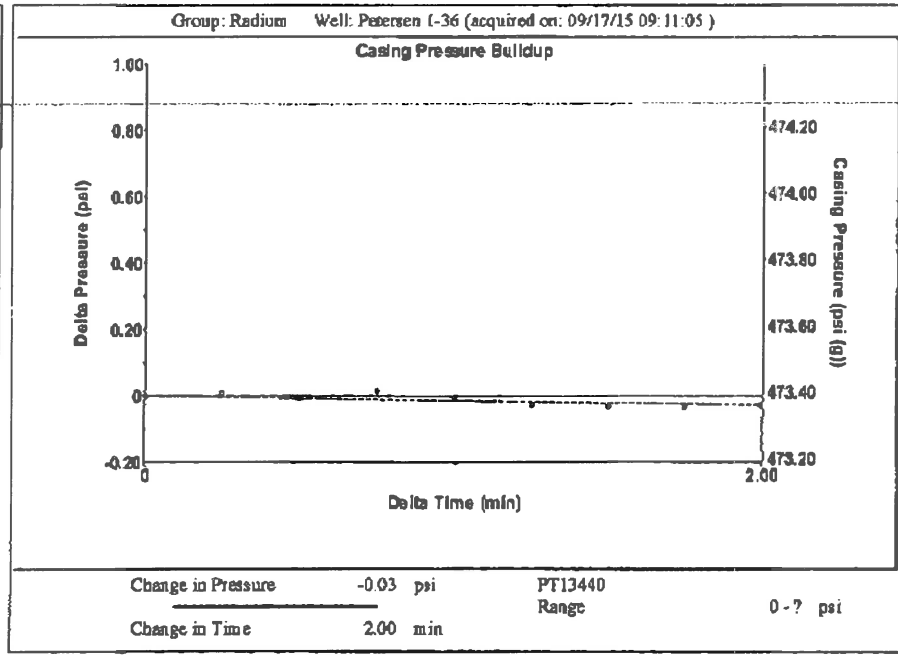
09/17/2015 15:08



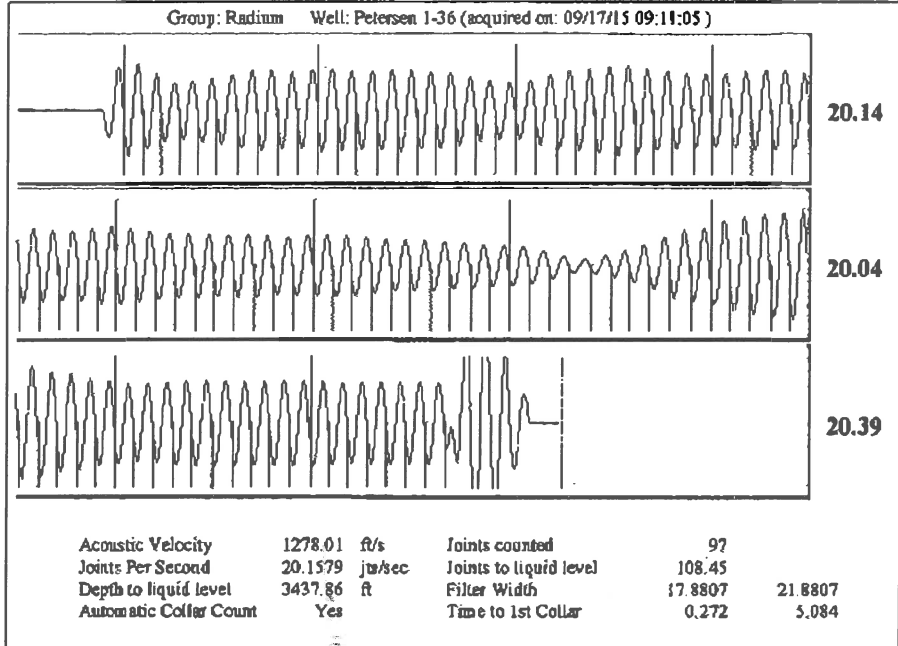
Filter Type High Pass Automatic Collar Count Yes Time 5.38 sec
 Manual Acoustic Velo 1260.44 ft/s Manual JTS/sec 19.8807 Joints 108.45 JTS
 Depth 3437.86 ft



Analysis Method: Automatic



Production		Potential	Casing Pressure	Producing
Oil	-	-	473.4 psi (g)	Annular Gas Flow 1 Mscf/D
Water	-	-	Casing Pressure Buildup -0.028 psi	
Gas	-	-	2.00 min	
IPR Method	Vogel		Gas/Liquid Interface Pressure 516.1 psi (g)	% Liquid 98 %
PBHP/SBHP	-		Liquid Level Depth 3437.86 ft	
Production Efficiency	0.0		Pump Intake Depth 3640.00 ft	
Oil 40 deg API			Formation Depth 3630.00 ft	
Water 1.05 Sp.Gr.H2O				
Gas 0.68 Sp.Gr.AIR				
Acoustic Velocity 1278.01 ft/s				
Formation Submergence		202 ft		Pump Intake 580.5 psi (g)
Total Gaseous Liquid Column HT (TVD)		198 ft		Producing BHP 577.3 psi (g)
Equivalent Gas Free Liquid HT (TVD)				Static BHP - psi (g)
Acoustic Text				



Conservation Division
District Office No. 1
210 E. Frontview, Suite A
Dodge City, KS 67801



Phone: 620-225-8888
Fax: 620-225-8885
<http://kcc.ks.gov/>

Shari Feist Albrecht, Chair
Jay Scott Emler, Commissioner
Pat Apple, Commissioner

Sam Brownback, Governor

September 22, 2015

Loveness Mpanje
F. G. Holl Company L.L.C.
9431 E CENTRAL STE 100
WICHITA, KS 67206-2563

Re: Temporary Abandonment
API 15-047-21077-00-00
HAWLEY 6-13
NE/4 Sec.13-24S-17W
Edwards County, Kansas

Dear Loveness Mpanje:

"Your temporary abandonment (TA) application for the well listed above has been approved. In accordance with K.A.R. 82-3-111 the TA status of this well will expire 09/22/2016.

- * If you return this well to service or plug it, please notify the District Office.
- * If you sell this well you are required to file a Transfer of Operator form, T-1.
- * If the well will remain temporarily abandoned, you must submit a new TA application, CP-111, before 09/22/2016.

You may contact me at the number above if you have questions.

Very truly yours,

Michael Maier"