



TEMPORARY ABANDONMENT WELL APPLICATION

OPERATOR: License# _____
 Name: _____
 Address 1: _____
 Address 2: _____
 City: _____ State: _____ Zip: _____ + _____
 Contact Person: _____
 Phone: (_____) _____
 Contact Person Email: _____
 Field Contact Person: _____
 Field Contact Person Phone: (_____) _____

API No. 15- _____
 Spot Description: _____
 _____ - _____ - _____ - _____ Sec. _____ Twp. _____ S. R. _____ E W
 _____ feet from N / S Line of Section
 _____ feet from E / W Line of Section
 GPS Location: Lat: _____, Long: _____
(e.g. xx.xxxxx) (e.g. -xxx.xxxxx)
 Datum: NAD27 NAD83 WGS84
 County: _____ Elevation: _____ GL KB
 Lease Name: _____ Well #: _____
 Well Type: (check one) Oil Gas OG WSW Other: _____
 SWD Permit #: _____ ENHR Permit #: _____
 Gas Storage Permit #: _____
 Spud Date: _____ Date Shut-In: _____

	Conductor	Surface	Production	Intermediate	Liner	Tubing
Size						
Setting Depth						
Amount of Cement						
Top of Cement						
Bottom of Cement						

Casing Fluid Level from Surface: _____ How Determined? _____ Date: _____

Casing Squeeze(s): _____ to _____ w / _____ sacks of cement, _____ to _____ w / _____ sacks of cement. Date: _____
(top) (bottom) (top) (bottom)

Do you have a valid Oil & Gas Lease? Yes No

Depth and Type: Junk in Hole at _____ Tools in Hole at _____ Casing Leaks: Yes No Depth of casing leak(s): _____
(depth) (depth)

Type Completion: ALT. I ALT. II Depth of: DV Tool: _____ w / _____ sacks of cement Port Collar: _____ w / _____ sack of cement
(depth) (depth)

Packer Type: _____ Size: _____ Inch Set at: _____ Feet

Total Depth: _____ Plug Back Depth: _____ Plug Back Method: _____

Geological Data:

Formation Name	Formation Top	Formation Base	Completion Information
1. _____	At: _____	to _____ Feet	Perforation Interval _____ to _____ Feet or Open Hole Interval _____ to _____ Feet
2. _____	At: _____	to _____ Feet	Perforation Interval _____ to _____ Feet or Open Hole Interval _____ to _____ Feet

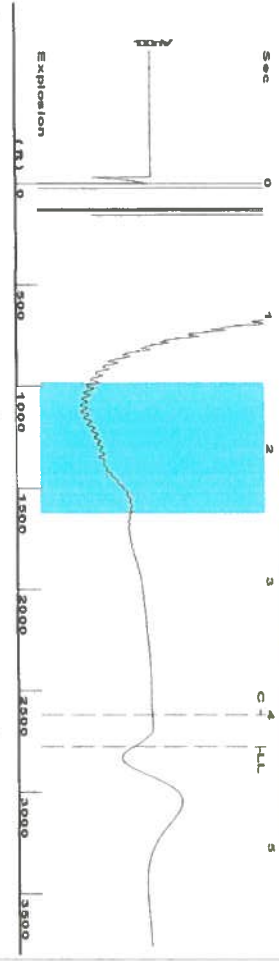
~~UNDER PENALTY OF PERJURY I HEREBY ATTEST THAT THE INFORMATION CONTAINED HEREIN IS TRUE AND CORRECT TO THE BEST OF MY KNOWLEDGE~~

Submitted Electronically

Do NOT Write in This Space - KCC USE ONLY	Date Tested: _____	Results: _____	Date Plugged: _____	Date Repaired: _____	Date Put Back in Service: _____
	Review Completed by: _____ Comments: _____				
TA Approved: <input type="checkbox"/> Yes <input type="checkbox"/> Denied Date: _____					

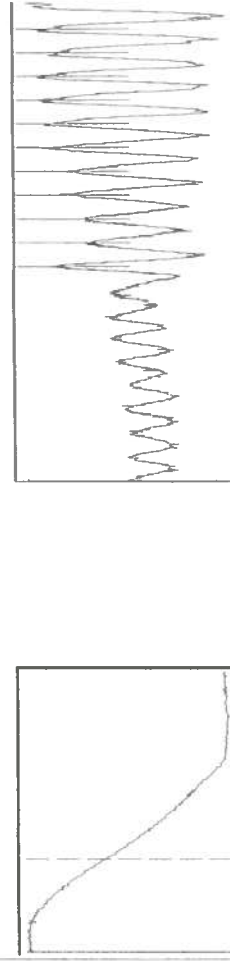
Mail to the Appropriate KCC Conservation Office:

	KCC District Office #1 - 210 E. Frontview, Suite A, Dodge City, KS 67801	Phone 620.225.8888
	KCC District Office #2 / UPGS - 3450 N. Rock Road, Building 600, Suite 601, Wichita, KS 67226	Phone 316.630.4000
	KCC District Office #3 - 1500 SW Seventh Steet, Chanute, KS 66720	Phone 620.432.2300
	KCC District Office #4 - 2301 E. 13th Street, Hays, KS 67601-2651	Phone 785.625.0550



Filter Type High Pass Automatic Collar Count Yes
 Manual Acoustic Velo 1296.52 ft/s Manual JTS/sec 20.4499
 Time 4.242 sec
 Joints 87.5225 Jts
 Depth 2774.46 ft

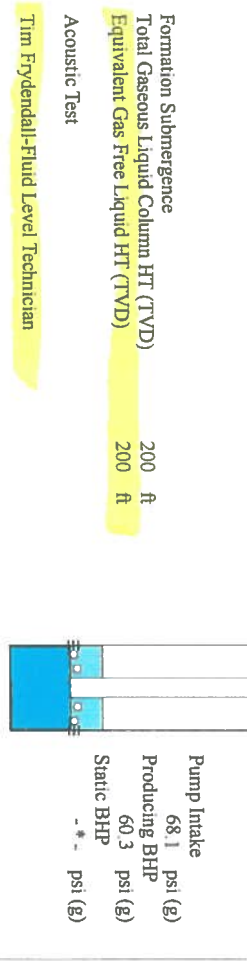
[1.5 to 2.5 (Sec)]



Analysis Method: Automatic

Group: Merit Energy Company-Ulysses Well: King F-2 (acquired on: 10/06/15 08:03:52)

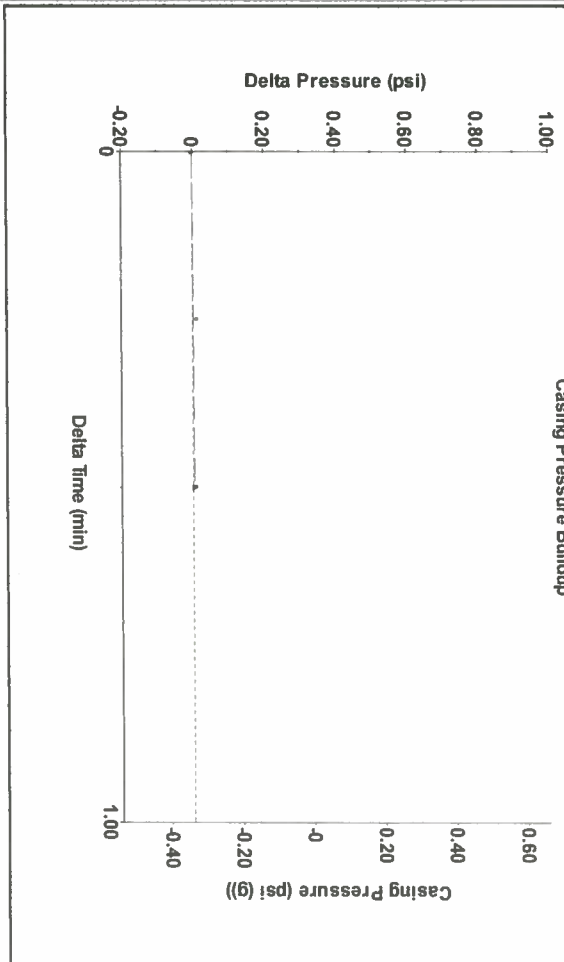
Production Current	Potential	Casing Pressure	Producing
Oil -*- BBL/D	Oil -*- BBL/D	-0.3 psi (g)	Annular Gas Flow
Water -*- BBL/D	Water -*- BBL/D	0.004 psi	0 Mscf/D
Gas -*- Mscf/D	Gas -*- Mscf/D	0.50 min	% Liquid
IPR Method Vogel	Gas/Liquid Interface Pressure	0.6 psi (g)	100 %
PBHP/SBHP -*-	Liquid Level Depth	2774.46 ft	
Production Efficiency 0.0	Pump Intake Depth	2974.00 ft	
Oil 40 deg API	Acoustic Velocity	1308.09 ft/s	
Water 1.05 Sp.Gr.H2O	Formation Depth	2951.00 ft	
Gas 0.70 Sp.Gr.AIR			



Formation Submergence 200 ft
 Total Gaseous Liquid Column HT (TVD) 200 ft
 Equivalent Gas Free Liquid HT (TVF) 200 ft

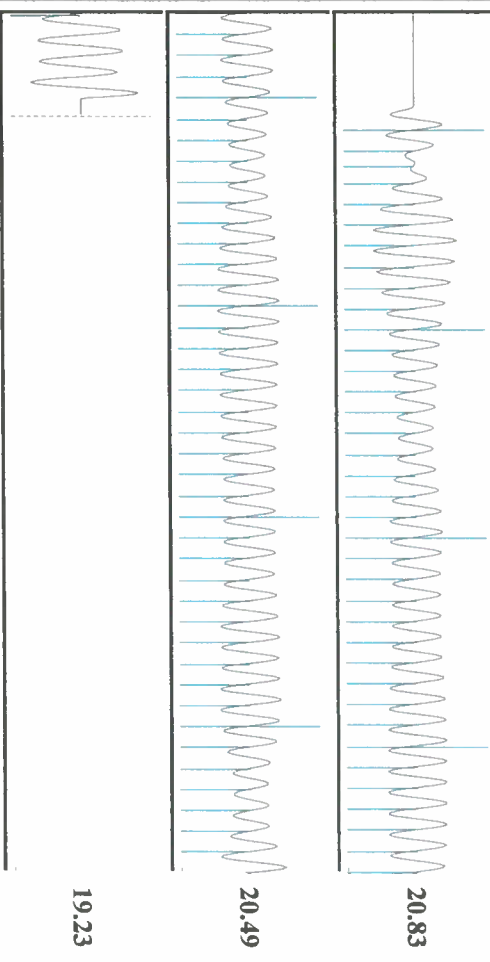
Acoustic Test

Tim Frydendall-Fluid Level Technician



Change in Pressure 0.00 psi
 Change in Time 0.50 min
 PT14654 Range 0 - ? psi

Group: Merit Energy Company-Ulysses Well: King F-2 (acquired on: 10/06/15 08:03:52)



Acoustic Velocity	1308.09 ft/s	Joints counted	77
Joints Per Second	20.6324 Jts/sec	Joints to liquid level	87.5225
Depth to liquid level	2774.46 ft	Filter Width	18.4499
Automatic Collar Count	Yes	Time to 1st Collar	0.272

Conservation Division
District Office No. 1
210 E. Frontview, Suite A
Dodge City, KS 67801



Phone: 620-225-8888
Fax: 620-225-8885
<http://kcc.ks.gov/>

Shari Feist Albrecht, Chair
Jay Scott Emler, Commissioner
Pat Apple, Commissioner

Sam Brownback, Governor

October 13, 2015

Janna Burton
Merit Energy Company, LLC
13727 NOEL RD STE 1200
DALLAS, TX 75240

Re: Temporary Abandonment
API 15-067-20402-00-00
KING F 2
NE/4 Sec.06-29S-35W
Grant County, Kansas

Dear Janna Burton:

"Your temporary abandonment (TA) application for the well listed above has been approved. In accordance with K.A.R. 82-3-111 the TA status of this well will expire 10/13/2016.

- * If you return this well to service or plug it, please notify the District Office.
- * If you sell this well you are required to file a Transfer of Operator form, T-1.
- * If the well will remain temporarily abandoned, you must submit a new TA application, CP-111, before 10/13/2016.

You may contact me at the number above if you have questions.

Very truly yours,

Michael Maier"