

1264995



Operator Name: _____ Lease Name: _____ Well #: _____

Sec. _____ Twp. _____ S. R. _____ East West County: _____

INSTRUCTIONS: Show important tops of formations penetrated. Detail all cores. Report all final copies of drill stems tests giving interval tested, time tool open and closed, flowing and shut-in pressures, whether shut-in pressure reached static level, hydrostatic pressures, bottom hole temperature, fluid recovery, and flow rates if gas to surface test, along with final chart(s). Attach extra sheet if more space is needed.

Final Radioactivity Log, Final Logs run to obtain Geophysical Data and Final Electric Logs must be emailed to kcc-well-logs@kcc.ks.gov. Digital electronic log files must be submitted in LAS version 2.0 or newer AND an image file (TIFF or PDF).

Drill Stem Tests Taken <i>(Attach Additional Sheets)</i>	<input type="checkbox"/> Yes <input type="checkbox"/> No	<input type="checkbox"/> Log	Formation (Top), Depth and Datum	<input type="checkbox"/> Sample
Samples Sent to Geological Survey	<input type="checkbox"/> Yes <input type="checkbox"/> No	Name	Top	Datum
Cores Taken	<input type="checkbox"/> Yes <input type="checkbox"/> No			
Electric Log Run	<input type="checkbox"/> Yes <input type="checkbox"/> No			
Geologist Report / Mud Logs	<input type="checkbox"/> Yes <input type="checkbox"/> No			
List All E. Logs Run:				

CASING RECORD <input type="checkbox"/> New <input type="checkbox"/> Used							
Report all strings set-conductor, surface, intermediate, production, etc.							
Purpose of String	Size Hole Drilled	Size Casing Set (In O.D.)	Weight Lbs. / Ft.	Setting Depth	Type of Cement	# Sacks Used	Type and Percent Additives

ADDITIONAL CEMENTING / SQUEEZE RECORD				
Purpose:	Depth Top Bottom	Type of Cement	# Sacks Used	Type and Percent Additives
<input type="checkbox"/> Perforate				
<input type="checkbox"/> Protect Casing				
<input type="checkbox"/> Plug Back TD				
<input type="checkbox"/> Plug Off Zone				

- Did you perform a hydraulic fracturing treatment on this well? Yes No *(If No, skip questions 2 and 3)*
- Does the volume of the total base fluid of the hydraulic fracturing treatment exceed 350,000 gallons? Yes No *(If No, skip question 3)*
- Was the hydraulic fracturing treatment information submitted to the chemical disclosure registry? Yes No *(If No, fill out Page Three of the ACO-1)*

Date of first Production/Injection or Resumed Production/Injection:	Producing Method: <input type="checkbox"/> Flowing <input type="checkbox"/> Pumping <input type="checkbox"/> Gas Lift <input type="checkbox"/> Other <i>(Explain)</i> _____				
Estimated Production Per 24 Hours	Oil Bbls.	Gas Mcf	Water Bbls.	Gas-Oil Ratio	Gravity

DISPOSITION OF GAS: <input type="checkbox"/> Vented <input type="checkbox"/> Sold <input type="checkbox"/> Used on Lease <i>(If vented, Submit ACO-18.)</i>	METHOD OF COMPLETION: <input type="checkbox"/> Open Hole <input type="checkbox"/> Perf. <input type="checkbox"/> Dually Comp. <input type="checkbox"/> Commingled <i>(Submit ACO-5)</i>			PRODUCTION INTERVAL: Top _____ Bottom _____	

Shots Per Foot	Perforation Top	Perforation Bottom	Bridge Plug Type	Bridge Plug Set At	Acid, Fracture, Shot, Cementing Squeeze Record <i>(Amount and Kind of Material Used)</i>

TUBING RECORD:	Size:	Set At:	Packer At:
----------------	-------	---------	------------

OPERATOR

Company: TDI, INC
 Address: 1310 BISON ROAD
 HAYS, KANSAS 67601

Contact Geologist: TOM DENNING
 Contact Phone Nbr: 785-628-2593
 Well Name: URBAN # 1
 Location: NE SE NW SEC.7-T15S-R18W
 API: 15-051-26,781-00-00
 Pool: WILDCAT
 State: KANSAS

Field: DECHANT
 Country: USA



Scale 1:240 Imperial

Well Name: URBAN # 1
 Surface Location: NE SE NW SEC.7-T15S-R18W
 Bottom Location:
 API: 15-051-26,781-00-00
 License Number: 4787
 Spud Date: 7/28/2015 Time: 4:00 PM
 Region: ELLIS COUNTY
 Drilling Completed: 8/3/2015 Time: 8:00 AM
 Surface Coordinates: 1650' FNL & 2310' FWL
 Bottom Hole Coordinates:
 Ground Elevation: 2029.00ft
 K.B. Elevation: 2039.00ft
 Logged Interval: 2900.00ft To: 3751.00ft
 Total Depth: 3751.00ft
 Formation: LANSING-KANSAS CITY
 Drilling Fluid Type: CHEMICAL/FRESH WATER GEL

SURFACE CO-ORDINATES

Well Type: Vertical
 Longitude: -99.3662073
 Latitude: 38.7648948
 N/S Co-ord: 1650' FNL
 E/W Co-ord: 2310' FWL

LOGGED BY

Company: SOLUTIONS CONSULTING, INC.
 Address: 108 W 35TH
 HAYS, KS 67601

Phone Nbr: (785) 639-1337
 Logged By: GEOLOGIST Name: HERB DEINES

CONTRACTOR

Contractor: SOUTHWIND DRILLING, INC.
 Rig #: 1
 Rig Type: MUD ROTARY
 Spud Date: 7/28/2015 Time: 4:00 PM
 TD Date: 8/3/2015 Time: 8:00 AM

ELEVATIONS

K.B. Elevation: 2039.00ft
K.B. to Ground: 10.00ft

Ground Elevation: 2029.00ft

NOTES

RECOMMENDATION TO RUN PRODUCTION CASING BASED ON RESULTS OF DST # 1 AND POTENTIAL IN OTHER LKC BENCHES.

OPEN HOLE LOGGING BY PIONEER ENERGY SERVICES: DUAL INDUCTION LOG, DUAL COMPENSATED POROSITY LOG, MICRORESISTIVITY LOG

DRILL STEM TESTING BY TRILOBITE TESTING, INC: TWO (2) CONVENTIONAL TESTS

	URBAN # 1	JEROME #1	URBAN # 1
	NE SE NW	SW NE NW SE	NE NE NW
	SEC.7-15S-18W	SEC.7-15-18W	SEC.7-15-18W
	2029'GL 2039'KB	KB 2038'	KB 2033'
<u>FORMATION</u>	<u>LOG TOPS</u>	<u>LOG TOPS</u>	<u>LOG TOPS</u>
Anhydrite	1228 +811	+ 818	+ 815
B-Anhydrite	1263 +776	+ 782	+ 781
Topeka	3018- 979	- 970	
Heebner Sh.	3275-1236	-1230	-1231
Toronto	3295-1256	-1251	
LKC	3320-1281	-1276	-1277
BKC	3568-1529	-1520	
Arbuckle	3631-1592	-1602	-1595
RTD	3751-1712	-1686	-1600

SUMMARY OF DAILY ACTIVITY

7-28-15 RU, Spud 4:00 PM, set 8 5/8" surface casing to 213' w/150 sxs
Common 2%Gel 3%CC, slope 1/4 degree

7-29-15 244', drill plug 6:00 AM

7-30-15 2050', drilling

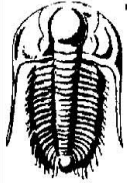
7-31-15 2690', drilling, displaced 2488' to 2509'

8-01-15 3285', drilling, CFS 3320', short trip, CFS 3360', DST #1 3315' to
3360' "A"- "C" LKC, TIWB

8-02-15 3485', drilling, CFS 3540', TOWB, DST # 2 3450' to 3540' "H" - "K"
LKC, TIWB

8-03-15 3700', drilling, RTD 3751' @8:00AM, CCH, TOWB, logs, TIWB, LDDP,
run 5 1/2" production casing, slope survey @3751' 3/4 degree

8-04-15 3751' final completion, production casing, RTD



TRILOBITE TESTING, INC.

DRILL STEM TEST REPORT

TDI
1310 Bison Rd
Hays KS 67601-9696
ATTN: Herb Deines

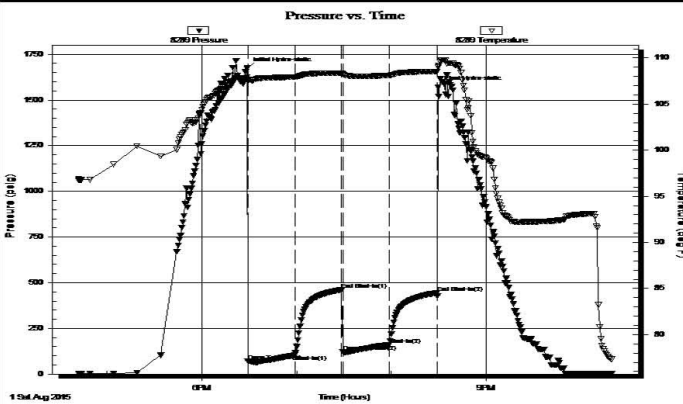
7 15s 18w Ellis
Urban #1
Job Ticket: 62394 **DST#: 1**
Test Start: 2015.08.01 @ 16:42:00

GENERAL INFORMATION:

Formation: **LKC "A - C"**
Deviated: No Whipstock: ft (KB)
Time Tool Opened: 18:29:00
Time Test Ended: 22:19:00
Test Type: Conventional Bottom Hole (Initial)
Tester: Jim Svaty
Unit No: 76
Interval: **3315.00 ft (KB) To 3360.00 ft (KB) (TVD)**
Reference Elevations: 2039.00 ft (KB)
Total Depth: 3360.00 ft (KB) (TVD) 2031.00 ft (CF)
Hole Diameter: 7.88 inches Hole Condition: Fair KB to GR/CF: 8.00 ft

Serial #: 8289 Outside
Press@RunDepth: 161.60 psig @ 3324.00 ft (KB) Capacity: 8000.00 psig
Start Date: 2015.08.01 End Date: 2015.08.01 Last Calib.: 2015.08.01
Start Time: 16:42:02 End Time: 22:19:30 Time On Btm: 2015.08.01 @ 18:28:45
Time Off Btm: 2015.08.01 @ 20:29:30

TEST COMMENT: 30-IF- BOB in 1min. 45sec.
30-ISI- Surface Blow Building to 1/2in. 7min. Died Back in 12min.
30-FF- BOB in 3min 15sec. GTS in 29min.
30-FSI- BOB in 3min. 45sec.



PRESSURE SUMMARY

Time (Min.)	Pressure (psig)	Temp (deg F)	Annotation
0	1674.07	107.93	Initial Hydro-static
1	71.00	107.41	Open To Flow (1)
31	104.74	107.93	Shut-In(1)
60	461.58	108.37	End Shut-In(1)
61	121.04	108.22	Open To Flow (2)
90	161.60	108.11	Shut-In(2)
121	444.36	108.54	End Shut-In(2)
121	1570.87	108.98	Final Hydro-static

Recovery

Length (ft)	Description	Volume (bbl)
62.00	VMCO 15%w 20%m 65%o	0.87
186.00	CO 100%	2.61
129.00	MCO 20%m 80%o	1.81

Gas Rates

Choke (inches)	Pressure (psig)	Gas Rate (Mcf/d)



TRILOBITE TESTING, INC.

DRILL STEM TEST REPORT

TDI
1310 Bison Rd
Hays KS 67601-9696
ATTN: Herb Deines

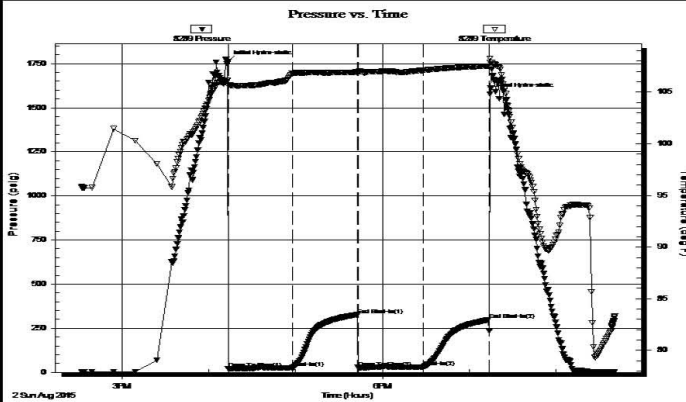
7 15s 18w Ellis
Urban #1
Job Ticket: 62395 **DST#: 2**
Test Start: 2015.08.02 @ 14:32:00

GENERAL INFORMATION:

Formation: **LKC " H - K "**
Deviated: No Whipstock: ft (KB)
Time Tool Opened: 16:13:15
Time Test Ended: 20:42:00
Test Type: Conventional Bottom Hole (Reset)
Tester: Jim Svaty
Unit No: 76
Interval: **3450.00 ft (KB) To 3540.00 ft (KB) (TVD)**
Reference Elevations: 2039.00 ft (KB)
Total Depth: 3540.00 ft (KB) (TVD) 2031.00 ft (CF)
Hole Diameter: 7.88 inches Hole Condition: Fair KB to GR/CF: 8.00 ft

Serial #: 8289 Outside
Press@RunDepth: 29.43 psig @ 3473.00 ft (KB) Capacity: 8000.00 psig
Start Date: 2015.08.02 End Date: 2015.08.02 Last Calib.: 2015.08.02
Start Time: 14:32:02 End Time: 20:40:36 Time On Btm: 2015.08.02 @ 16:13:00
Time Off Btm: 2015.08.02 @ 19:14:30

TEST COMMENT: 45-IF- Surface Blow Building to 1/2in. Died Back in 17min.
45-ISI- No Blow
45-FF- No Blow
45-FSI- No Blow



PRESSURE SUMMARY

Time (Min.)	Pressure (psig)	Temp (deg F)	Annotation
0	1761.30	106.12	Initial Hydro-static
1	21.13	105.62	Open To Flow (1)
45	25.59	106.79	Shut-In(1)
90	326.79	106.92	End Shut-In(1)
90	27.33	106.81	Open To Flow (2)
135	29.43	107.10	Shut-In(2)
181	298.01	107.52	End Shut-In(2)
182	1578.71	108.26	Final Hydro-static

Recovery

Length (ft)	Description	Volume (bbl)
30.00	Oil Speck Mud 100%	0.42

* Recovery from multiple tests

Gas Rates

Choke (inches)	Pressure (psig)	Gas Rate (Mcf/d)

Trilobite Testing, Inc

Ref. No: 62395

Printed: 2015.08.03 @ 00:03:36

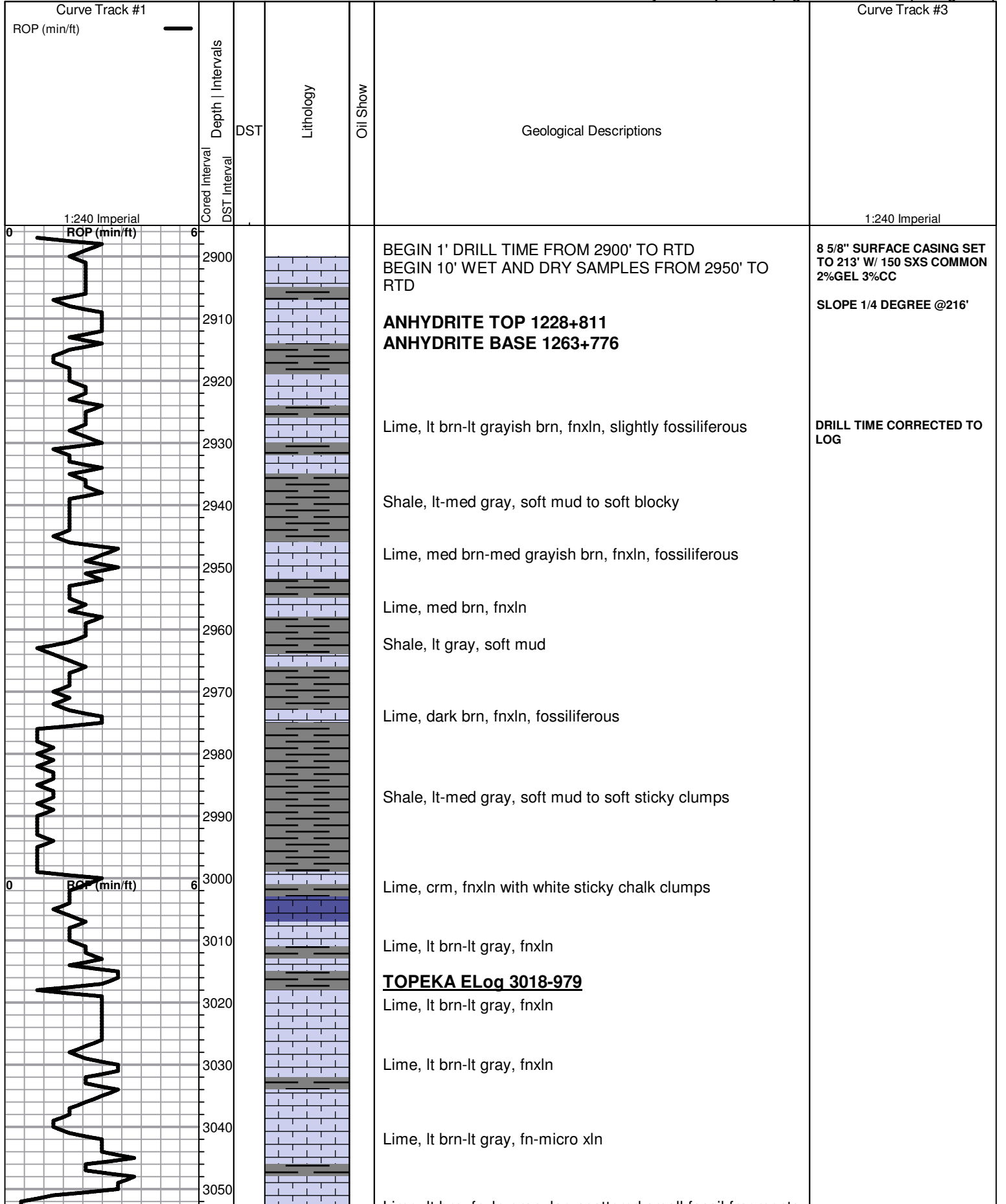
ROCK TYPES

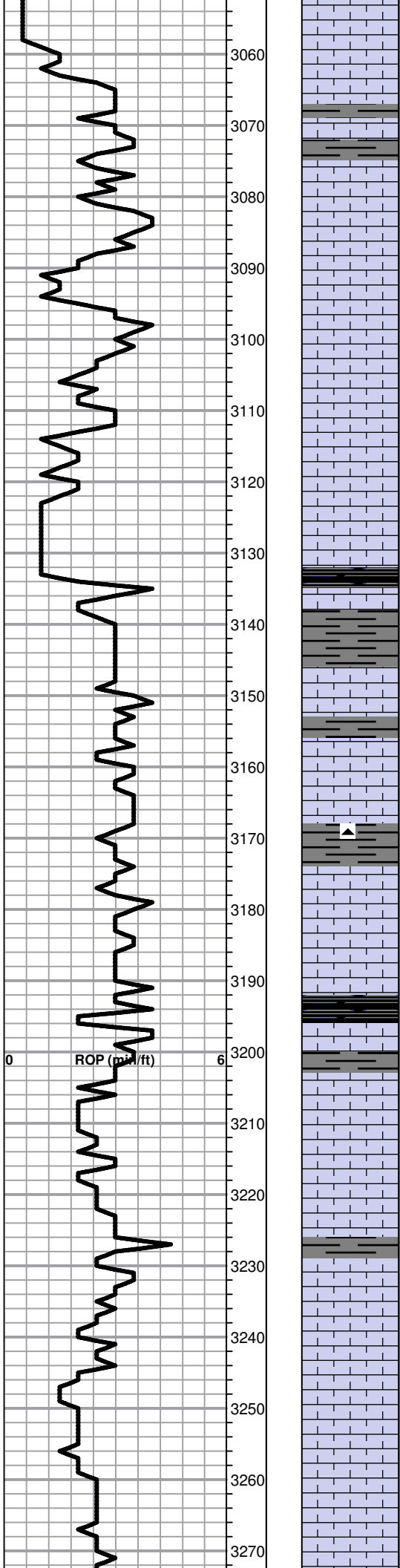
	Clystcol		Lmst fw<7		shale, grn		shale, red
	Dolprim		Lmst fw>7		shale, gry		
	Dol Lime		Lscongl		Carbon Sh		

ACCESSORIES

- MINERAL**
 ▲ Chert, dark
 P Pyrite
 △ Chert White
 ▨ Euhed rhombs of dol or r

- FOSIL**
 F Fossils < 20%
 ⊕ Oolite
 ⊕ Oomoldic





Lime, lt brn, fnxln-granular, scattered small fossil fragments, slight chalky content, NS, No Odor, No stain

Lime, lt brn-med gray, fn-vfxln

Lime, lt brn, fnxln- slightly granular in part

Lime, lt brn-lt grayish brn, fn-micro xln

Lime, lt brn, granular-fnxln, NS

Lime, lt brn, fn-micro xln

Lime, lt-med brn, fnxln with increasing sticky chalk clumps

Lime, lt brn, granular-fnxln in part, sticky chalk clumps

Lime, crm-lt brn, granular with slight chalk
Shale, black carbonaceous, fissile, blocky

Lime, crm, fn-micro xln sublithographic

Lime, crm-lt brn, fnxln with slight bedded chalk content

Lime, crm-lt brn, fnxln

Lime, lt brn, fnxln

Lime, lt brn, fnxln

Shale, black carbonaceous, blocky

Lime, lt-med brn, fnxln with increasing bedded chalk, NS

Lime, crm-lt brn, fnxln-granular in part

Lime, crm with white chalky wash, fnxln

Lime, crm-lt brn, fnxln with moderate chalk

Lime, crm-lt brn, fnxln

Lime, crm, fnxln-granular, bedded chalk, NS

Lime, crm-lt brn, fnxln-granular, white chalk wash

Lime, lt-med brn, fnxln-granular

HEEBNER SHALE ELog 3275-1236

Shale, black carbonaceous, fissile, blocky
Lime, lt-med brn, fn-micro xln

Shale, lime green, soft sticky clumps

TORONTO ELog 3295-1256

Lime, crm, fn-vfxln, slight bedded chalk, NS
Chert, white, fresh, sharp

Lime, lt brn, fn-micro xln

Shale, red, soft with lt red wash

LKC ELog 3320-1281

Lime, tan-lt brn, mostly fnxln, show zone with fine inter xln porosity, scattered to saturated staining, no odor, NFO

Lime, crm, fn-micro xln

Lime, lt-med brn, fn-micro xln

Lime, crm-lt brn, fnxln, zone of oolitic material with fossil fragments, scattered to saturated staining, lt odor, NFO in inter oolitic porosity

Lime, crm-lt brn, fn-micro xln

Lime, crm, fnxln, spotty staining in fine pin point vuggy porosity, NFO, No Odor grading into fresh oil staining in fossil casts

Lime, crm-lt brn, fn-vfxln, some sticky chalk clumping with lt white chalk wash

Shale, black carbonaceous, soft blocky

Lime, crm-tan, fine oolitic/oolmoldic bed with scattered to saturated staining in inter oolitic-scattered vuggy porosity. NFO, very lt to no detectable odor.

Lime, crm-tan, fnxln with moderate bedded chalk, NS

Lime, crm-tan, fn-vfxln

Lime, lt brn-tan, oolitic/oolmoldic, few chips with spotty staining with barren material. appears to have thin oil accumulation near top of zone with water in mid and lower level

Lime, crm-tan, fn-micro xln, slight bedded chalk

Lime, crm-tan, fn-micro xln, slight to moderate bedded chalk

Lime, crm-tan, fn-micro xln, slightly fossiliferous

Shale, black carbonaceous, fossiliferous
Lime, lt gray, fn-vfxln

Lime, crm-lt brn, mostly fnxln with firm bedded chalk, few chips with spotty staining in poorly developed zone with very poor visible porosity

Lime, crm-tan, fn-vfxln

Shale, med-dark gray, firm blocky

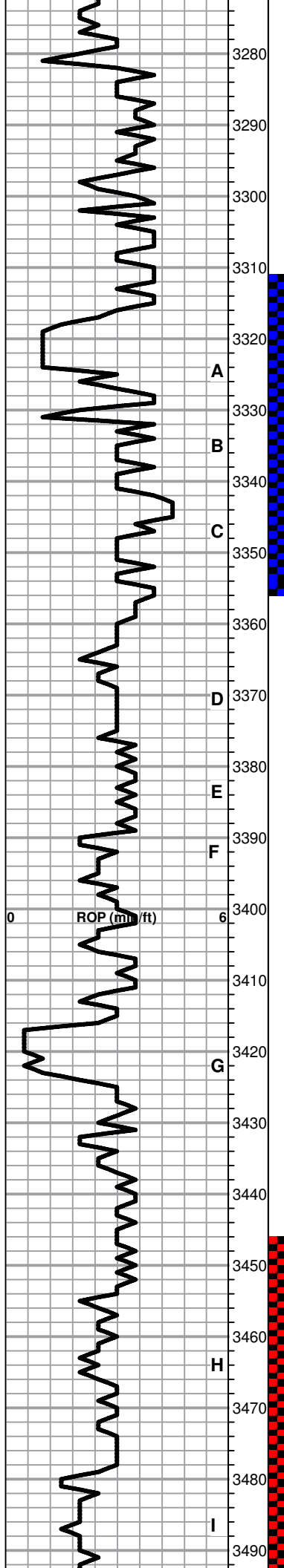
Lime, crm-lt brn, fnxln, few chips with fine inter xln porosity with dark flaky deposits, very lt halo wet cut, NFO, No Odor

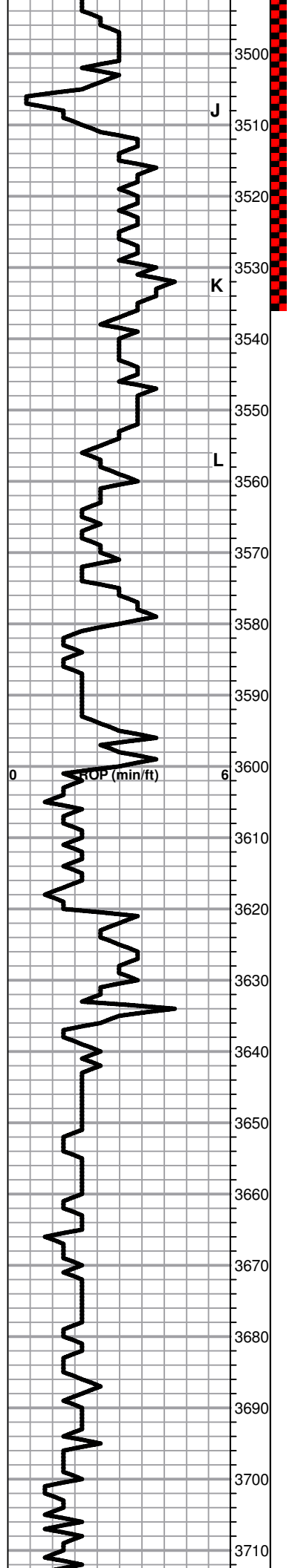
Lime, crm-lt brn, fn-vfxln

CFS 3320', SHORT TRIP

DST # 1 CORRECTED DEPTH
3311' TO 3356' SEE HEADER
FOR TEST SUMMARY

DST # 2 CORRECTED DEPTH
3446' TO 3536' SEE HEADER





Lime crm-lt brn, ool moldic in part, lt saturated staining with few gas bubbles in fine scattered vuggy porosity.

Lime, crm-tan, fnxln with bedded chalk

Lime, crm-tan, fnxln

Lime, crm, fnxln, lt chalky wash

Lime, white-crm, fn-micro xln, firm bedded chalk

Lime, crm-lt brn, fn-micro xln

BKC ELog 3568-1529

Shale, red-reddish brn, firm blocky, sandy in part
Lime, clastic mix, vari colored, fn-vfxln

Shale, red, soft with lt red wash

Lime, offwhite-crm, fn-micro xln, some clastic lime mix in part

Shale, red-reddish brn, soft-firm blocky

Shale, red-reddish brn with lt red wash, increasing chert content, vari color, nodules and fresh, sharp chips

Lime, white, fnxln, red shale staining and reworked lime and chert clastics

ARBUCKLE ELog 3631-1592

- Dolomite, white-ivory, granular with rhombic xln development, inter xln porosity with saturated staining, MSFO and very lt odor
- Dolomite, ivory-tan, fnxln-granular, inter xln porosity, rhombic xln, scattered to saturated staining, VMSFO, very lt odor
- Dolomite, ivory-crm, fnxln-granular, interxln porosity with decreasing fresh oil staining and more gilsonitic material

Dolomite, ivory-crm, fnxln-granular

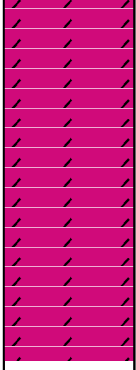
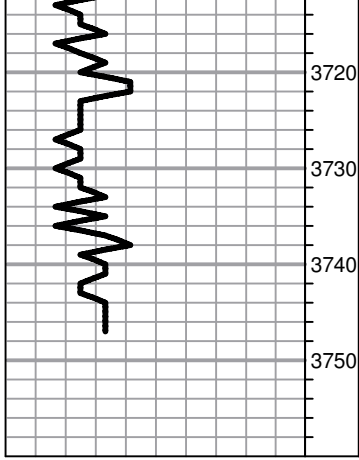
Dolomite, ivory-crm, fnxln-granular

Dolomite, ivory-crm, fnxln-granular

Dolomite, ivory-crm, fnxln-granular, xln pyrite inclusions with scattered quartz grains imbedded in dolomite

Dolomite, ivory-crm, fnxln-granular, lt chalky wash

Dolomite, ivory-crm, fnxln-granular



Dolomite, ivory-crm, fnxln-granular

Dolomite, ivory-crm, fnxln-granular

Dolomite, crm-lt salmon, fnxln-granular

RTD 3751-1712 LTD 3747-1708

**5 1/2" 14# PRODUCTION
CASING SET TO 3746' W/ 150
SXS EA2. DV TOOL SET AT
1226' AND CEMENTED TO
SURFACE**

SLOPE 3/4 DEGREE @ 3751'

CUSTOMER TDE, INC	WELL NO. #1	LEASE URSAN	JOB TYPE LONG STRING	TICKET NO. 28720
----------------------	----------------	----------------	-------------------------	---------------------

CHART NO.	TIME	RATE (BPM)	VOLUME (BBL) (GAL)	PUMPS		PRESSURE (PSI)		DESCRIPTION OF OPERATION AND MATERIALS
				T	C	TUBING	CASING	
	845							ON LOCATION w/ FLOAT EQUIP
								RTD - 3751'
								LTD - 3747'
								CENTRALIZERS - 1, 3, 5, 8, 9, 8, 10, 12, 14, 57, - 75
								BASKETS - 2, 15, 58, 76
								D.V. TOOL - JOINT 58 @ 1227'
								Shoe - 43510
								Total Csg - 3751'
	1030							START RUNNING Csg / FLOAT EQUIP
	1220							BREAK CIRC ON BOTTOM
	120	5	0				0	START CMT (EA-2)
	135	5	29				0	END CMT
	140	5	0					WASH P&L / DROP PLUG
	140		0				0	START DISP
			60				200	CATCH CMT
			90				800	END DISP 800 LIFT
								1400 LAND
	205							DROP BOMB
	205	2.5					0	PLUG RAT AND MOUSE
								RAT - 30 SKS MOUSE 15 SKS
	220						1400	OPEN D.V. TOOL
	222	5	0				0	START CMT
	245	5	102				300	END CMT
	247							WASH P&L / DROP PLUG
	250	4	0				0	START DISP / CMT CIRC IN PIT
	256	4	30				400	PLUG DOWN 400 # LIFT
								1500 # LAND
								- 50 SKS CMT TO PIT
								THANKS
								DAVID AUSTIN & ROSS



DRILL STEM TEST REPORT

Prepared For: **TDI**

1310 Bison Rd
Hays KS 67601-9696

ATTN: Herb Deines

Urban #1

7-15s-18w Ellis,KS

Start Date: 2015.08.01 @ 16:42:00

End Date: 2015.08.01 @ 22:19:00

Job Ticket #: 62394 DST #: 1

Trilobite Testing, Inc
1515 Commerce Parkway Hays, KS 67601
ph: 785-625-4778 fax: 785-625-5620

Printed: 2015.08.03 @ 13:24:16

TDI 7-15s-18w Ellis,KS Urban #1 DST # 1 LKC " A - C " 2015.08.01



**TRILOBITE
TESTING, INC**

DRILL STEM TEST REPORT

TDI
1310 Bison Rd
Hays KS 67601-9696
ATTN: Herb Deines

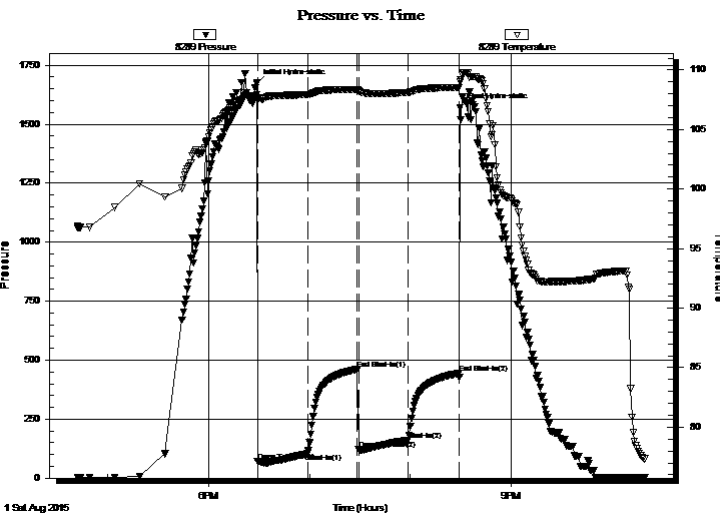
7-15s-18w Ellis,KS
Urban #1
Job Ticket: 62394 **DST#: 1**
Test Start: 2015.08.01 @ 16:42:00

GENERAL INFORMATION:

Formation: **LKC " A - C "**
Deviated: No Whipstock: ft (KB)
Time Tool Opened: 18:29:00
Time Test Ended: 22:19:00
Interval: **3315.00 ft (KB) To 3360.00 ft (KB) (TVD)**
Total Depth: 3360.00 ft (KB) (TVD)
Hole Diameter: 7.88 inches Hole Condition: Fair
Test Type: Conventional Bottom Hole (Initial)
Tester: Jim Svaty
Unit No: 76
Reference Elevations: 2039.00 ft (KB)
2031.00 ft (CF)
KB to GR/CF: 8.00 ft

Serial #: 8289 Outside
Press@RunDepth: 161.60 psig @ 3324.00 ft (KB) Capacity: 8000.00 psig
Start Date: 2015.08.01 End Date: 2015.08.01 Last Calib.: 2015.08.01
Start Time: 16:42:02 End Time: 22:19:30 Time On Btm: 2015.08.01 @ 18:28:45
Time Off Btm: 2015.08.01 @ 20:29:30

TEST COMMENT: 30-IF- BOB in 1 min. 45 sec.
30-ISI- Surface Blow Building to 1/2" 7 min. Died Back in 12 min.
30-FF- BOB in 3 min 15 sec. GTS in 29 min.
30-FSI- BOB in 3 min. 45 sec.



PRESSURE SUMMARY

Time (Min.)	Pressure (psig)	Temp (deg F)	Annotation
0	1674.07	107.93	Initial Hydro-static
1	71.00	107.41	Open To Flow (1)
31	104.74	107.93	Shut-In(1)
60	461.58	108.37	End Shut-In(1)
61	121.04	108.22	Open To Flow (2)
90	161.60	108.11	Shut-In(2)
121	444.36	108.54	End Shut-In(2)
121	1570.87	108.98	Final Hydro-static

Recovery

Length (ft)	Description	Volume (bbl)
62.00	WMCO 15%w 20%m 65%o	0.87
186.00	CO 100%	2.61
129.00	MCO 20%m 80%o	1.81
0.00	GTS	0.00

Gas Rates

	Choke (inches)	Pressure (psig)	Gas Rate (Mcf/d)



**TRILOBITE
TESTING, INC**

DRILL STEM TEST REPORT

TOOL DIAGRAM

TDI
1310 Bison Rd
Hays KS 67601-9696
ATTN: Herb Deines

7-15s-18w Ellis,KS
Urban #1
Job Ticket: 62394 **DST#: 1**
Test Start: 2015.08.01 @ 16:42:00

Tool Information

Drill Pipe:	Length: 3314.00 ft	Diameter: 3.80 inches	Volume: 46.49 bbl	Tool Weight: 2500.00 lb
Heavy Wt. Pipe:	Length: 0.00 ft	Diameter: 2.75 inches	Volume: 0.00 bbl	Weight set on Packer: 25000.00 lb
Drill Collar:	Length: 0.00 ft	Diameter: 2.25 inches	Volume: 0.00 bbl	Weight to Pull Loose: 46000.00 lb
			<u>Total Volume: 46.49 bbl</u>	Tool Chased 0.00 ft
Drill Pipe Above KB:	20.00 ft			String Weight: Initial 43000.00 lb
Depth to Top Packer:	3315.00 ft			Final 44000.00 lb
Depth to Bottom Packer:	ft			
Interval between Packers:	45.00 ft			
Tool Length:	66.00 ft			
Number of Packers:	2	Diameter: 6.75 inches		

Tool Comments:

Tool Description	Length (ft)	Serial No.	Position	Depth (ft)	Accum. Lengths
-------------------------	--------------------	-------------------	-----------------	-------------------	-----------------------

Change Over Sub	1.00			3295.00	
Shut In Tool	5.00			3300.00	
Hydraulic tool	5.00			3305.00	
Packer	5.00			3310.00	21.00 Bottom Of Top Packer
Packer	5.00			3315.00	
Stubb	1.00			3316.00	
Perforations	7.00			3323.00	
Change Over Sub	1.00			3324.00	
Recorder	0.00	8789	Inside	3324.00	
Recorder	0.00	8289	Outside	3324.00	
Blank Spacing	32.00			3356.00	
Change Over Sub	1.00			3357.00	
Bullnose	3.00			3360.00	45.00 Bottom Packers & Anchor

Total Tool Length: 66.00



**TRILOBITE
TESTING, INC**

DRILL STEM TEST REPORT

FLUID SUMMARY

TDI **7-15s-18w Ellis,KS**
 1310 Bison Rd **Urban #1**
 Hays KS 67601-9696 Job Ticket: 62394 **DST#: 1**
 ATTN: Herb Deines Test Start: 2015.08.01 @ 16:42:00

Mud and Cushion Information

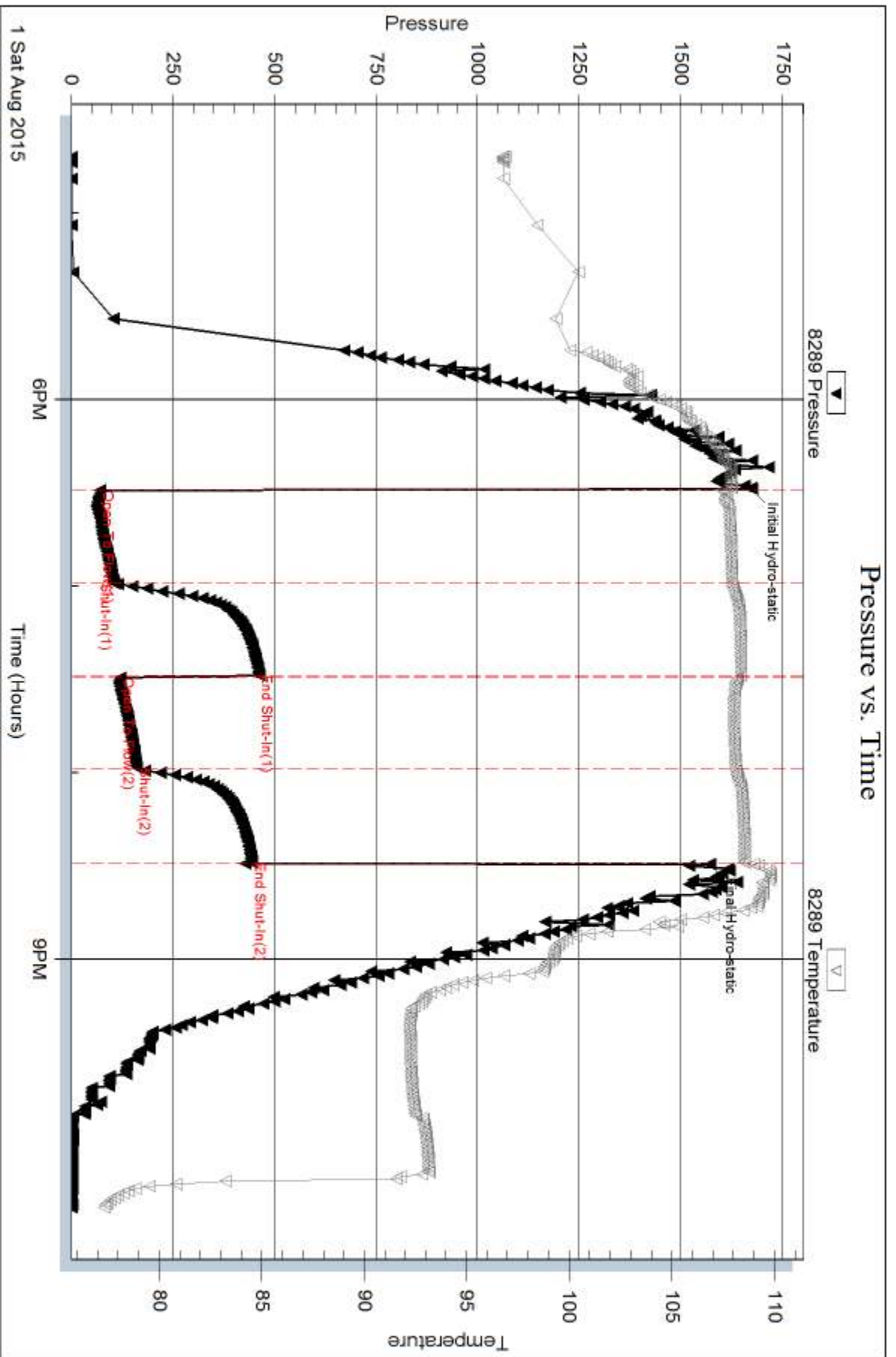
Mud Type: Gel Chem	Cushion Type:	Oil API: 39 deg API
Mud Weight: 9.00 lb/gal	Cushion Length: ft	Water Salinity: ppm
Viscosity: 60.00 sec/qt	Cushion Volume: bbl	
Water Loss: 7.98 in ³	Gas Cushion Type:	
Resistivity: ohm.m	Gas Cushion Pressure: psig	
Salinity: 4800.00 ppm		
Filter Cake: 2.00 inches		

Recovery Information

Recovery Table

Length ft	Description	Volume bbl
62.00	WMCO 15%w 20%m 65%o	0.870
186.00	CO 100%	2.609
129.00	MCO 20%m 80%o	1.810
0.00	GTS	0.000

Total Length: 377.00 ft Total Volume: 5.289 bbl
 Num Fluid Samples: 0 Num Gas Bombs: 0 Serial #:
 Laboratory Name: Laboratory Location:
 Recovery Comments:

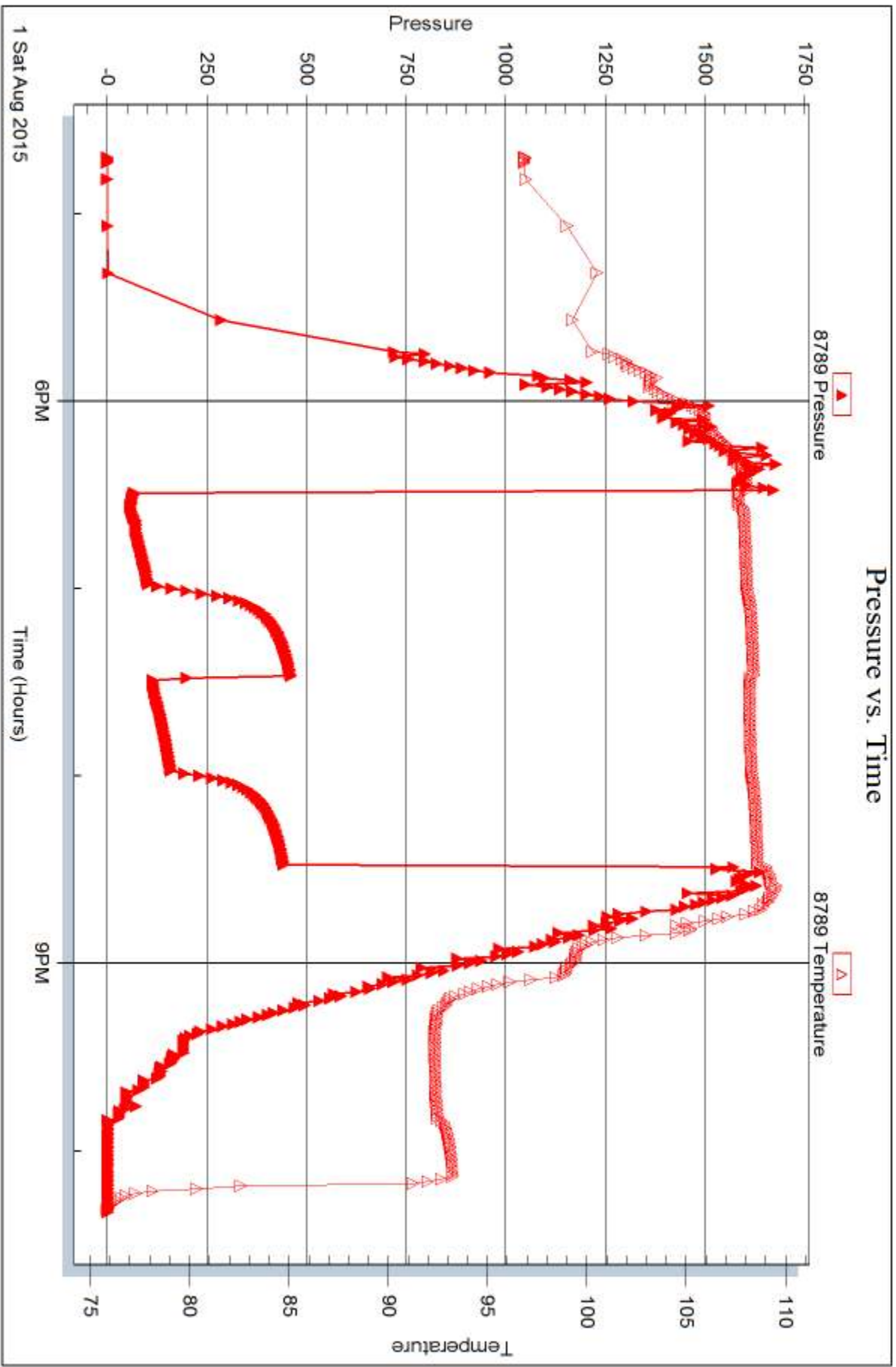


Serial #: 8789

Inside TDI

Urban #1

DST Test Number: 1



Trilobite Testing, Inc

Ref. No: 62394

Printed: 2015.08.03 @ 13:24:18



DRILL STEM TEST REPORT

Prepared For: **TDI**

1310 Bison Rd
Hays KS 67601-9696

ATTN: Herb Deines

Urban #1

7-15s-18w Ellis,KS

Start Date: 2015.08.02 @ 14:32:00

End Date: 2015.08.02 @ 20:42:00

Job Ticket #: 62395 DST #: 2

Trilobite Testing, Inc
1515 Commerce Parkway Hays, KS 67601
ph: 785-625-4778 fax: 785-625-5620

Printed: 2015.08.03 @ 13:23:46

TDI 7-15s-18w Ellis,KS Urban #1 DST # 2 LKC " H - K " 2015.08.02



TRILOBITE TESTING, INC.

DRILL STEM TEST REPORT

TDI
1310 Bison Rd
Hays KS 67601-9696
ATTN: Herb Deines

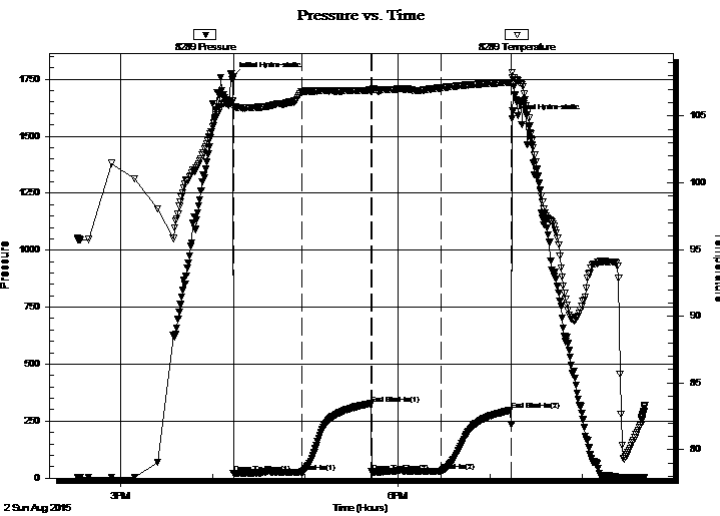
7-15s-18w Ellis,KS
Urban #1
Job Ticket: 62395 **DST#: 2**
Test Start: 2015.08.02 @ 14:32:00

GENERAL INFORMATION:

Formation: **LKC "H - K"**
Deviated: No Whipstock: ft (KB)
Time Tool Opened: 16:13:15
Time Test Ended: 20:42:00
Interval: **3450.00 ft (KB) To 3540.00 ft (KB) (TVD)**
Total Depth: 3540.00 ft (KB) (TVD)
Hole Diameter: 7.88 inches Hole Condition: Fair
Reference Elevations: 2039.00 ft (KB)
2031.00 ft (CF)
KB to GR/CF: 8.00 ft
Test Type: Conventional Bottom Hole (Reset)
Tester: Jim Svaty
Unit No: 76

Serial #: 8289 Outside
Press@RunDepth: 29.43 psig @ 3473.00 ft (KB) Capacity: 8000.00 psig
Start Date: 2015.08.02 End Date: 2015.08.02 Last Calib.: 2015.08.02
Start Time: 14:32:02 End Time: 20:40:36 Time On Btm: 2015.08.02 @ 16:13:00
Time Off Btm: 2015.08.02 @ 19:14:30

TEST COMMENT: 45-IF- Surface Blow Building to 1/2" Died Back in 17 min.
45-ISI- No Blow
45-FF- No Blow
45-FSI- No Blow



PRESSURE SUMMARY

Time (Min.)	Pressure (psig)	Temp (deg F)	Annotation
0	1761.30	106.12	Initial Hydro-static
1	21.13	105.62	Open To Flow (1)
45	25.59	106.79	Shut-In(1)
90	326.79	106.92	End Shut-In(1)
90	27.33	106.81	Open To Flow (2)
135	29.43	107.10	Shut-In(2)
181	298.01	107.52	End Shut-In(2)
182	1578.71	108.26	Final Hydro-static

Recovery

Length (ft)	Description	Volume (bbl)
30.00	Oil Speck Mud 100%	0.42

* Recovery from multiple tests

Gas Rates

Choke (inches)	Pressure (psig)	Gas Rate (Mcf/d)



**TRILOBITE
TESTING, INC**

DRILL STEM TEST REPORT

TOOL DIAGRAM

TDI
1310 Bison Rd
Hays KS 67601-9696
ATTN: Herb Deines

7-15s-18w Ellis,KS
Urban #1
Job Ticket: 62395 **DST#: 2**
Test Start: 2015.08.02 @ 14:32:00

Tool Information

Drill Pipe:	Length: 3437.00 ft	Diameter: 3.80 inches	Volume: 48.21 bbl	Tool Weight:	2500.00 lb
Heavy Wt. Pipe:	Length: 0.00 ft	Diameter: 2.75 inches	Volume: 0.00 bbl	Weight set on Packer:	25000.00 lb
Drill Collar:	Length: 0.00 ft	Diameter: 2.25 inches	Volume: 0.00 bbl	Weight to Pull Loose:	45000.00 lb
			<u>Total Volume: 48.21 bbl</u>	Tool Chased	0.00 ft
Drill Pipe Above KB:	8.00 ft			String Weight: Initial	44000.00 lb
Depth to Top Packer:	3450.00 ft			Final	44000.00 lb
Depth to Bottom Packer:	ft				
Interval between Packers:	90.00 ft				
Tool Length:	111.00 ft				
Number of Packers:	2	Diameter: 6.75 inches			

Tool Comments:

Tool Description

Tool Description	Length (ft)	Serial No.	Position	Depth (ft)	Accum. Lengths
Change Over Sub	1.00			3430.00	
Shut In Tool	5.00			3435.00	
Hydraulic tool	5.00			3440.00	
Packer	5.00			3445.00	21.00 Bottom Of Top Packer
Packer	5.00			3450.00	
Stubb	1.00			3451.00	
Perforations	21.00			3472.00	
Change Over Sub	1.00			3473.00	
Recorder	0.00	8789	Inside	3473.00	
Recorder	0.00	8289	Outside	3473.00	
Blank Spacing	63.00			3536.00	
Change Over Sub	1.00			3537.00	
Bullnose	3.00			3540.00	90.00 Bottom Packers & Anchor

Total Tool Length: 111.00



**TRILOBITE
TESTING, INC**

DRILL STEM TEST REPORT

FLUID SUMMARY

TDI **7-15s-18w Ellis,KS**
 1310 Bison Rd **Urban #1**
 Hays KS 67601-9696 Job Ticket: 62395 **DST#: 2**
 ATTN: Herb Deines Test Start: 2015.08.02 @ 14:32:00

Mud and Cushion Information

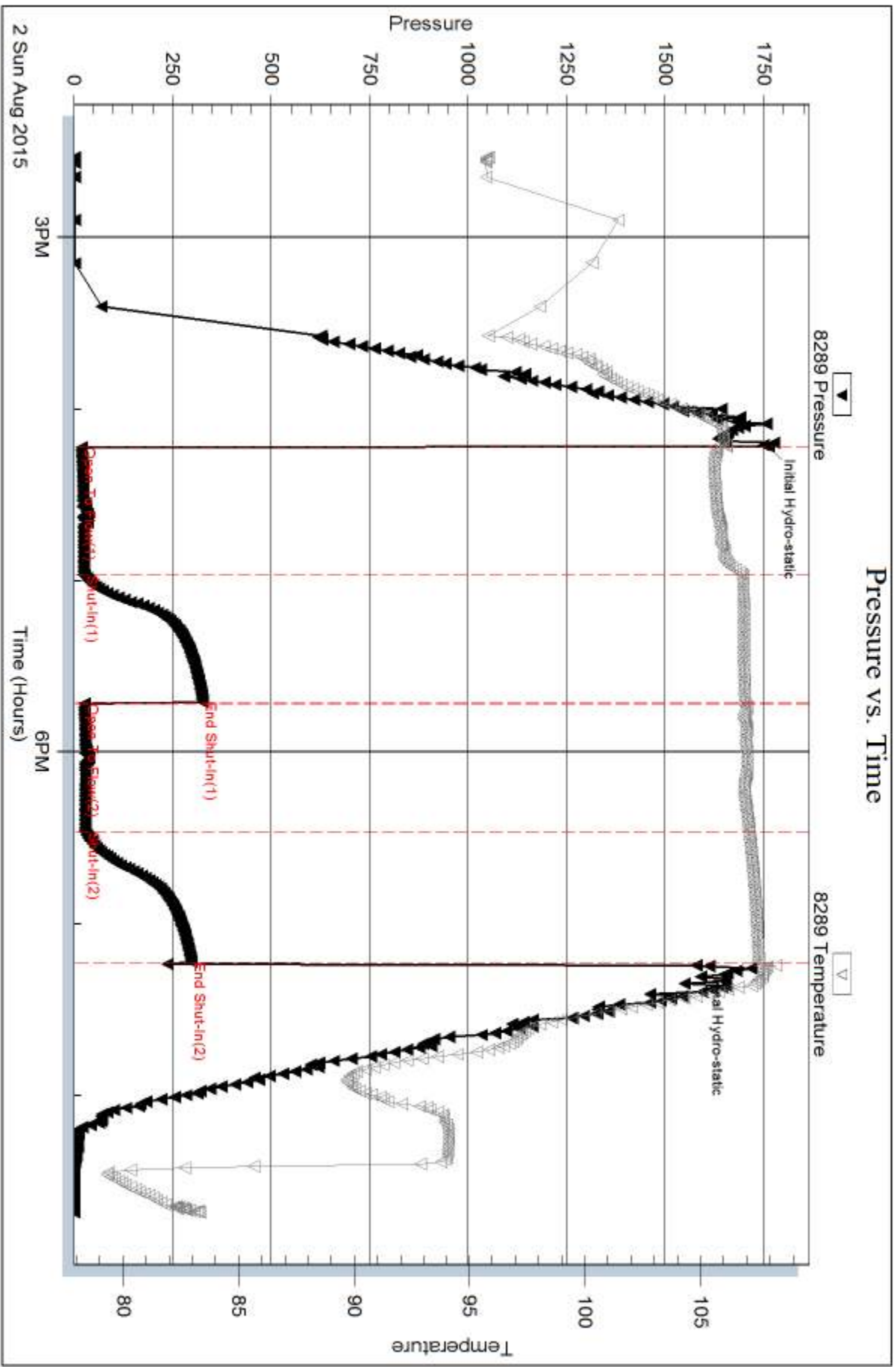
Mud Type: Gel Chem	Cushion Type:	Oil API:	deg API
Mud Weight: 9.00 lb/gal	Cushion Length: ft	Water Salinity:	ppm
Viscosity: 61.00 sec/qt	Cushion Volume: bbl		
Water Loss: 7.98 in ³	Gas Cushion Type:		
Resistivity: ohm.m	Gas Cushion Pressure: psig		
Salinity: 4800.00 ppm			
Filter Cake: 2.00 inches			

Recovery Information

Recovery Table

Length ft	Description	Volume bbl
30.00	Oil Speck Mud 100%	0.421

Total Length: 30.00 ft Total Volume: 0.421 bbl
 Num Fluid Samples: 0 Num Gas Bombs: 0 Serial #:
 Laboratory Name: Laboratory Location:
 Recovery Comments:

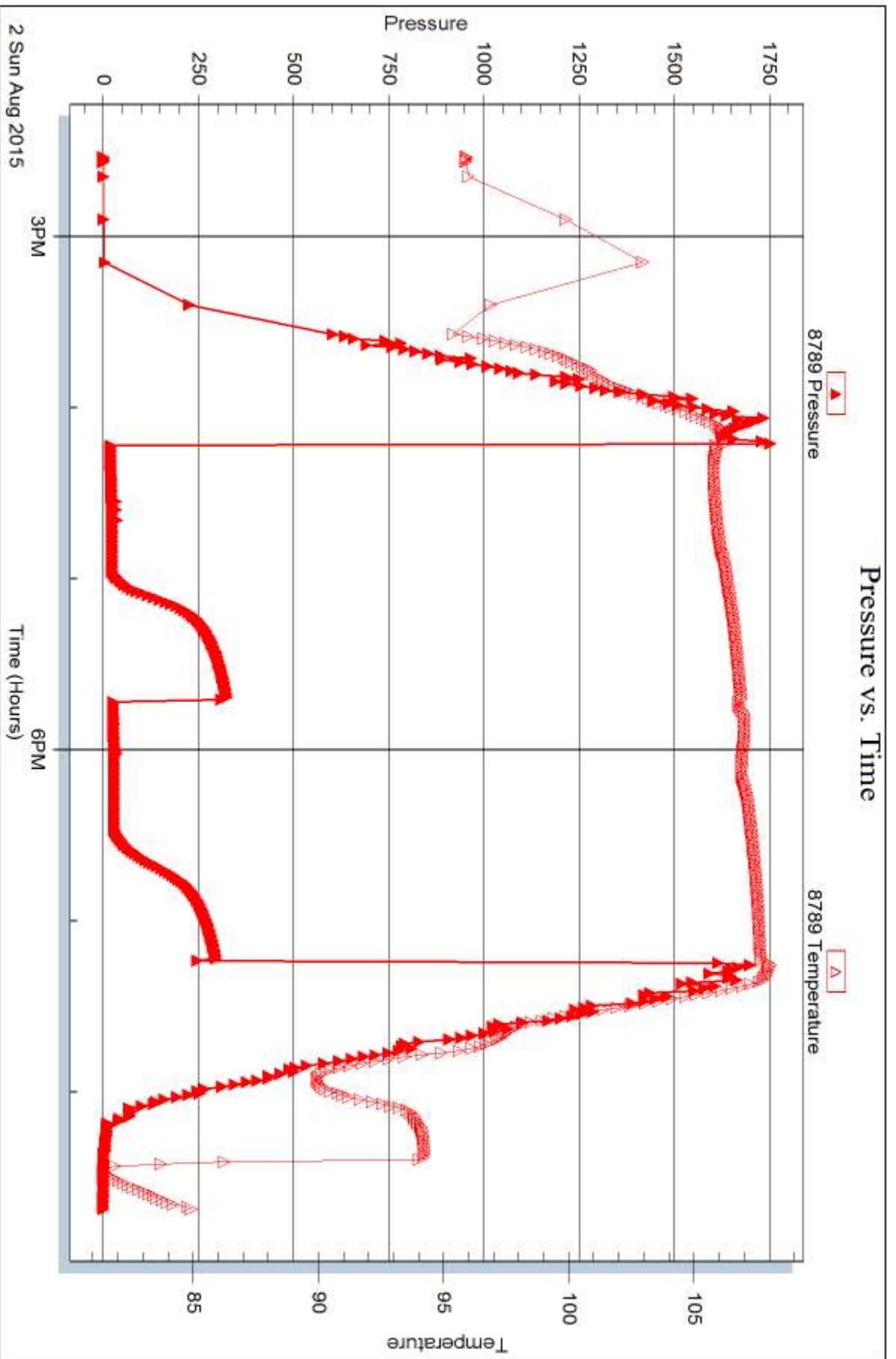


Serial #: 8789

Inside TDI

Urban #1

DST Test Number: 2



Trilobite Testing, Inc

Ref. No: 62395

Printed: 2015.08.03 @ 13:23:48



TRILOBITE TESTING INC.

1515 Commerce Parkway • Hays, Kansas 67601

Test Ticket

NO. 62394

Well Name & No. Urban #1 Test No. 1 Date 8-1-15
 Company TPI Elevation 2039 KB 2029 GL
 Address 1310 Bison Rd Hays KS 67601-9696
 Co. Rep / Geo. Herb Deines Rig Southwind #1
 Location: Sec. 7 Twp. 15^s Rge. 18^w Co. Ellis State KS

Interval Tested 3315-3360 Zone Tested LKC "A-C"
 Anchor Length 45 Drill Pipe Run 3314 Mud Wt. 9.3
 Top Packer Depth 3310 Drill Collars Run 0 Vis 60
 Bottom Packer Depth 3315 Wt. Pipe Run 0 WL 8
 Total Depth 3360 Chlorides 4800 ppm System LCM 2

Blow Description IF-BOB in 1min 45sec.
ISI-Surface Blow Building to 1/2 in. 7min Died Back 12min.
EF-BOB in 3min 15sec. DSTS 29min.
FSI-BOB in 3min. 45sec.

Rec	Feet of	%gas	%oil	%water	%mud
<u>62</u>	<u>Wmco</u>	<u>65</u>	<u>15</u>	<u>20</u>	
<u>186</u>	<u>CO</u>	<u>100</u>			
<u>129</u>	<u>mco</u>	<u>80</u>		<u>20</u>	

Rec Total 377 BHT 109 Gravity 39 API RW @ _____ °F Chlorides _____ ppm

- (A) Initial Hydrostatic 1674
- (B) First Initial Flow 71
- (C) First Final Flow 104
- (D) Initial Shut-In 461
- (E) Second Initial Flow 121
- (F) Second Final Flow 161
- (G) Final Shut-In 444
- (H) Final Hydrostatic 1570

- Test 1050
- Jars _____
- Safety Joint _____
- Circ Sub _____
- Hourly Standby _____
- Mileage 25 RT
- Sampler _____
- Straddle _____
- Shale Packer _____
- Extra Packer _____
- Extra Recorder _____
- Day Standby _____
- Accessibility _____

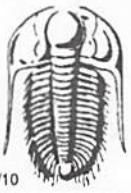
T-On Location 16:00
 T-Started 16:42
 T-Open 18:29
 T-Pulled 20:29
 T-Out 22:19

Initial Open 30
 Initial Shut-In 30
 Final Flow 30
 Final Shut-In 30

Comments _____
 Ruined Shale Packer _____
 Ruined Packer _____
 Extra Copies _____
 Sub Total 0
 Total 1075
 MP/DST Disc't _____

Approved By _____ Our Representative [Signature]

Trilobite Testing Inc. shall not be liable for damaged of any kind of the property or personnel of the one for whom a test is made, or for any loss suffered or sustained, directly or indirectly, through the use of its equipment, or its statements or opinion concerning the results of any test, tools lost or damaged in the hole shall be paid for at cost by the party for whom the test is made.



TRILOBITE TESTING INC.

1515 Commerce Parkway • Hays, Kansas 67601

Test Ticket

NO. 62395

Well Name & No. Urban #1 Test No. 2 Date 8-2-15
 Company T D I Elevation 2039 KB 2029 GL
 Address 1310 Bison Rd Hays KS, 67601-9696
 Co. Rep / Geo. Herb Deines Rig Southwind #1
 Location: Sec. 7 Twp. 15^s Rge. 18^w Co. Ellis State KS

Interval Tested 3450-3540 Zone Tested LRC "H-K
 Anchor Length 90 Drill Pipe Run 3437 Mud Wt. 9.2
 Top Packer Depth 3445 Drill Collars Run ~~3445~~ Vis 61
 Bottom Packer Depth 3450 Wt. Pipe Run ~~3450~~ WL 8
 Total Depth 3540 Chlorides 4800 ppm System LCM 2

Blow Description IF - Surface Blow Building to 1/2 in. Died Back in 17 min.
ISI - No Blow
FF - No Blow
FSI - No Blow

Rec	Feet of	%gas	%oil	%water	%mud
<u>30</u>	<u>Oil Speck Mud</u>			<u>100</u>	
Rec	Feet of	%gas	%oil	%water	%mud
Rec	Feet of	%gas	%oil	%water	%mud
Rec	Feet of	%gas	%oil	%water	%mud
Rec	Feet of	%gas	%oil	%water	%mud

Rec Total 30 BHT 108 Gravity _____ API RW _____ @ _____ °F Chlorides _____ ppm

(A) Initial Hydrostatic 1761 Test 1050 T-On Location 10:52
 (B) First Initial Flow 21 Jars _____ T-Started 14:32
 (C) First Final Flow 25 Safety Joint _____ T-Open 16:13
 (D) Initial Shut-In 326 Circ Sub _____ T-Pulled 19:13
 (E) Second Initial Flow 27 Hourly Standby _____ T-Out 20:42
 (F) Second Final Flow 29 Mileage 50 Comments _____
 (G) Final Shut-In 298 Sampler _____ loaded tools 8/3 10:00
 (H) Final Hydrostatic 1578 Straddle _____ Ruined Shale Packer _____

Initial Open 45 Shale Packer _____ Ruined Packer _____
 Initial Shut-In 45 Extra Packer _____ Extra Copies _____
 Final Flow 45 Extra Recorder _____ Sub Total 0
 Final Shut-In 45 Day Standby _____ Total 1100
 Accessibility _____ MP/DST Disc't _____
 Sub Total 1100

Approved By _____ Our Representative [Signature]

Trilobite Testing Inc. shall not be liable for damaged of any kind of the property or personnel of the one for whom a test is made, or for any loss suffered or sustained, directly or indirectly, through the use of its equipment, or its statements or opinion concerning the results of any test, tools lost or damaged in the hole shall be paid for at cost by the party for whom the test is made.