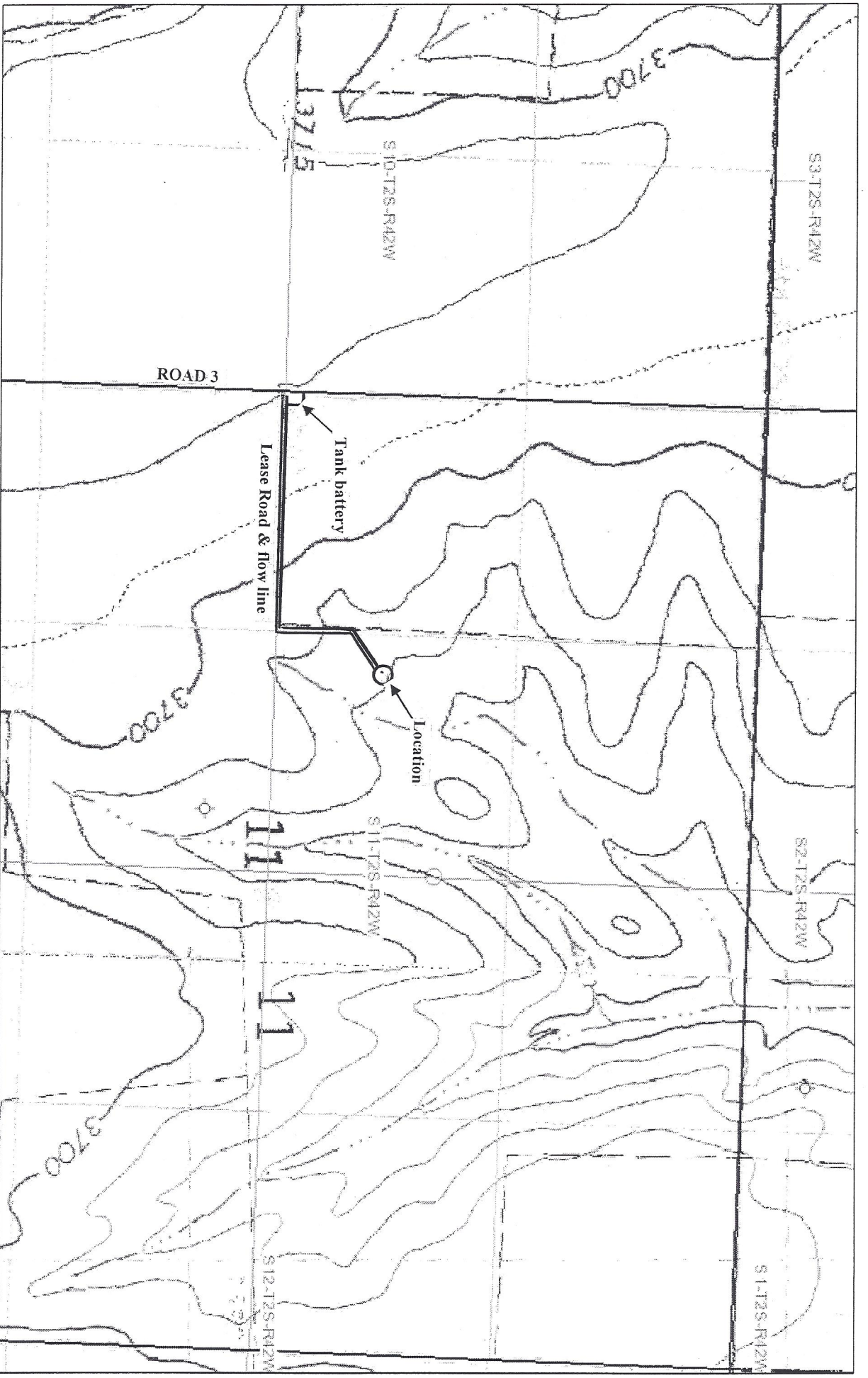
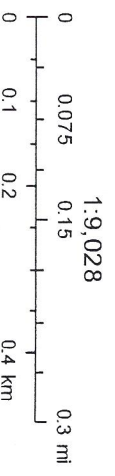


# HILT-SAMPLER 22-11D



August 5, 2015

NW 1/4 SEC 11 T2S, R42W  
CHEYENNE COUNTY, KANSAS



Sources: Esri, HERE, DeLorme, Intermap, increment P Corp., GEBCO, USGS, FAO, NPS, NRCAN, Geobase, IGN, Kadaster NL, Ordnance Survey.