

ALLIED CEMENTING CO., INC.

Federal Tax I.D.# 48-0727860

originals in file

15578

REMIT TO P.O. BOX 31
RUSSELL, KANSAS 67665

SERVICE POINT: R

DATE	SEC.	TWP.	RANGE	CALLED OUT	ON LOCATION	JOB START	JOB FINISH
1-30-04							10:00 AM
LEASE <u>Pekarek</u>	WELL # <u>1</u>	LOCATION <u>Zurich 25 1/2 W 25</u>			COUNTY <u>Rock</u>	STATE <u>KS</u>	
OLD OR NEW (Circle one)							

CONTRACTOR Marion Doherty Rig E
TYPE OF JOB Surface
HOLE SIZE 12 1/4 T.D. 210
CASING SIZE 8 5/8 DEPTH
TUBING SIZE DEPTH
DRILL PIPE DEPTH
TOOL DEPTH
PRES. MAX MINIMUM
MEAS. LINE SHOE JOINT
CEMENT LEFT IN CSG. 14 1/2
PERFS.
DISPLACEMENT 12 1/2 RBL 2816

OWNER
CEMENT
AMOUNT ORDERED 160 com 3% cc
2% gel

EQUIPMENT
PUMP TRUCK # 345 CEMENTER Doug Stone
HELPER
LK TRUCK # DRIVER
BULK TRUCK # 213 DRIVER Craig

COMMON @
POZMIX @
GEL @
CHLORIDE @
@
@
@
@
@
HANDLING @
MILEAGE
TOTAL

REMARKS:
Paul Bowman

SERVICE
DEPTH OF JOB
PUMP TRUCK CHARGE
EXTRA FOOTAGE @
MILEAGE @
PLUG 1 wooden @
@
@
TOTAL

CHARGE TO: Paul Bowman
STREET
CITY STATE ZIP

FLOAT EQUIPMENT
@
@
@
@
@
TOTAL

To Allied Cementing Co., Inc.
You are hereby requested to rent cementing equipment
and furnish cementer and helper to assist owner or

REMIT TO P.O. BOX 31
RUSSELL, KANSAS 67665

DATE <u>2-5-04</u>	SEC.	TWP.	RANGE	CALLED OUT	ON LOCATION	JOB START	JOB FINISH
LEASE <u>PEKAREK</u>	WELL # <u>1</u>	LOCATION <u>ZURTH 1W 2S 12W SW 1</u>			COUNTY <u>COOKS</u>	STATE <u>KS</u>	
OLD OR NEW (Circle one)							

CONTRACTOR MURTON B

TYPE OF JOB PRODUCTION STRING

HOLE SIZE 7 7/8 T.D. 3819

CASING SIZE 5 1/2 DEPTH 3818

TUBING SIZE DEPTH

DRILL PIPE DEPTH

TOOL DEPTH

PRES. MAX MINIMUM

MEAS. LINE SHOE JOINT 11

CEMENT LEFT IN CSG. 11

PERFS.

DISPLACEMENT 92 3/4 BBL

OWNER

CEMENT

AMOUNT ORDERED 150 ASC 2% GEL

EQUIPMENT

PUMP TRUCK CEMENTER MARK

345 HELPER DAVE

BULK TRUCK

282 DRIVER CARY

BULK TRUCK

DRIVER

COMMON @

POZMIX @

GEL @

CHLORIDE @

HANDLING @

MILEAGE @

TOTAL _____

REMARKS:

Port COLLAR on JT # 75 (1636)

10SK CMH

15SK CRH

FLOAT Held

SERVICE

DEPTH OF JOB _____

PUMP TRUCK CHARGE _____

EXTRA FOOTAGE @

MILEAGE @

PLUG 5 1/2 TRP @

2 STATING HEAD @

TOTAL _____

CHARGE TO: PAUL BOWMAN OIL

STREET _____

CITY _____ STATE _____ ZIP _____

FLOAT EQUIPMENT

5 1/2 @

CUTAS SICE @

INSECT @

5 GENT @

2 BASKETS @

PORT COLLAR @

TOTAL _____

To Allied Cementing Co., Inc.
You are hereby requested to rent cementing equipment and furnish cementer and helper to assist owner or contractor to do work as is listed. The above work was

MICHAEL A. DAVIGNON
PETROLEUM GEOLOGIST

P.O. DRAWER 150
BOGUE, KANSAS 67625

PHONE: 785-421-2346 OFFICE
785-421-7520 CELL

GEOLOGIST'S REPORT DRILLING TIME AND SAMPLE LOG

Company	Paul Bowman Oil Company		
Lease	Pekarek #1		
Field	Lynd South		
Location	NE-SW-NE	1900' FNL	1775' FEL
Section	8	Township	10s
		Range	19w
County	Rooks	State	Kansas
Contractor	Murfin Drilling Company, Rig #8		
Spud Date	01-30-2004	Completion Date	2-4-04
RTD	3819	LTD	3821
Mud up	3400'	Type Mud	Drispac
Samples saved from	3300'	To	T.D.
Drilling time kept from	3200'	To	T.D.
Samples examined from	3200'	To	T.D.
Geological supervision from	Surface	To	T.D.

Geologist on well: *Michael Davignon*

Formation Tops (Log)	Elevations
Anhydrite	1622 (+597)
Topeka	3208 (-989)
Heebner	3412 (-1193)
Lansing	3456 (-1231)
B-KC	3652 (-1433)
Arbuckle	3758 (-1539)
T.D.	3821 (-1602)
	KB 2219'
	DF
	GL 2214'

Measurements Are All From: KB

Electrical Surveys
R/A Guard w/sonic
By Log-Tech

Casing
Surface 202' of 8 5/8"
Production 3814' of 5 1/2"

LEGEND

3200

-987

9:00 AM 2-2-04

50

3300

START 10' WET DRY

50

LS, GRAY, F-XLN.
SL DY -NSO-

SH, GRAY, RUST
SH, LT GRAY, MAROON

BLACK CARB SHALES

SH, LT GRAY
LS, LT GRAY, TN, F-XLN
NO DIS P, DY
-NSO-

SH, GRAY, BLK

SH, LT GRAY, RUST

LS, TN, CEM, F-XLN
SL FOSS, SM FR INT PT P,
SCTD STN, SL S. FIO.
NO BDRK

SH, LT GRAY, GEN

SH, GRAY, TN

LS, CEM, TN, F-XLN
DNS, NO DIS P
-NSO-

3400

HEEBNER
3412 (1193)

BLACK CARB SHALE
sh, blk,
L4, TN, F-XLN
-NSO-

Sh, GRAY, RUST

Sh, RUST, GRN

L5, CRM, TN, F-XLN
SL FOSS, V PR VIS P,
FR ABUNDANT OIL STN, NO ODR
SL S.F.O.

Sh, RUST, GRAY

Sh, GRAY, BLK

LANSING
3448 (1229)

L5, CRM, TN, F-XLN
OCCAS POC W/ VUG P, SL 2Y
PR VIS P, SCLD STN
NO ODR

L5, CRM, TN, F-XLN
V 2Y, TRIP,
-NSO-

BLACK CARB SHALE

Sh, Lt GRAY, BLK, RUST

L5, CRM, TN, F-XLN
SL 2Y, SL CFY,
NO VIS P, NO ODR
NO S.O.

A. A. CRM F-XLN
2Y -NSO-

Sh, Lt GRAY, RUST
Sh, GRAY, BLK

L5, CRM, TN, F-XLN
SL FOSS, V PR VIS P,
SL 2Y, V SCLD STN
NO S.F.O.

Sh, Lt GRAY, Lt GRN

Sh, Lt GRN, BLN

L5, CRM, TN, F-XLN
FOSS, SL 2Y, SM FR POC P,
SM FR INTXN P, FR EVN DAK STN
SL S.F.O. NO ODR

Sh, RUST, GRAY

L6, WHI, CRM F-XLN
SL FOSS, OCCAS POC W/ FR INTXN P,
SL EVN DAK BAY STN,
NO S.F.O. INT ODR

A. A. WHI, OCCAS
F-XLN, 2Y
-NSO-

L5, WHI, TN, F-XLN
V DNS, 2Y, NO VIS P,
-NSO-

BLACK CARB SHALE

Sh, GRAY, GRN

Sh, RUST, GRN

L5, CRM, TN, F-XLN
SL OOL, FR INTXN P,
SM VUG P, FR EVN STN
SCLD S.F.O. FR ODR

Sh, Lt GRAY
BLACK CARB SHALE

L5, TN, BLK, F-XLN, SL FOSS,
FR INTXN P, SCLD STN
V SCLD S.F.O.

Sh, RUST, Lt GRN
Sh, Lt GRAY, BLN

L5, WHI, BLK, F-XLN
SL OOL, FR POC W/ GP OOL P,
SM FR INTXN P, FR EVN STN,
GP S.F.O. FR ODR

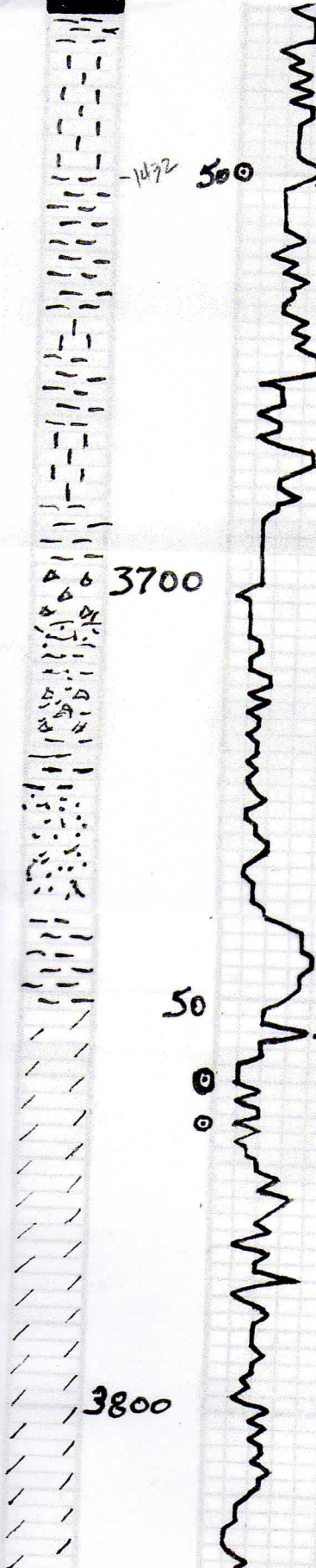
BLACK CARB SHALE

50

3500

50

3600



B-KC 3651
(-1432)

ARBUCKLE
3754 (-1535)

R.T.D. 3809

- Sh, GRAY, BRN
- Sh, RUST, GRN
- Sh, BRN, RUST
- Ls, WHT, CRAM, f-XEN,
NO VIS S, -NSO-
- Sh, GRAY, RUST
- Sh, RUST, BLE, GRN
- Sh, RUST, GRN
- Sh, RUST, GRN
- Ls, TN, CRAM, f-XEN,
NO VIS S, -NSO-
- Sh, RUST, GRN
- Ls, WHT f-XEN,
V. D.Y., YEL, TRIP,
-NSO-
- A.A. S.Y., FRCH
-NSO-
- Ls, FR, v. P. XEN, f. D.Y.
NO VIS S, -NSO-
- Sh, RUST, BRN
- S.S. CLT, W/ BRN, f. BRN,
GD DIS S, GD E.F.O.
NO ODOE
- Sh, BRN, MEN, SANDY
- Sh, BRN, RUST, SANDY
- Sh, BLUE, GRN
- Sh, GRN, WXY
- Dolo, Lt GRAY, TN, f-XEN,
SM GD INTXEN, TR VUGS,
SAT, GD S.F.O. GD ODOE
- Dolo, Lt GRAY, TN, f-XEN, SM TRAMP,
SM GR VUG S, GD LUM DRK STN,
ABUND NUY OIL, SM INT, GD ODOE
- Dolo, Lt GRAY, TN, f-XEN,
PR VUGS, SM TRAMP,
ABUND DRK NUY OIL, SM INT,
FR S.F.O. GD ODOE
- Sh, RUST, GRN
- Sh, GRN, BLUE
- Dolo, TN, Lt GRAY, PRNK, f-XEN,
DMS, NO VIS S, SM NUY OIL,
NO F.O. NO ODOE
- A.A. SM C-XEN
BRN, SM NUY RESIN STN
NO ODOE
- Dolo, TN, GRAY, f-XEN, DMS
NO VIS S, NO S.F.O.
NO ODOE
- Dolo, Lt, GRAY, M-XEN,
PR VIS INTXEN S,
BRN
-NSO-

DST #1 3747 TO 3765
REC'D 180' MUDDY OIL 1570' 30-30-70-3
120' MUDDY OIL 1570' MUD
IFP 86-131 325P 1119
FFP 126-161 455P 1097

7:00am 2-4-04