



## DRILL STEM TEST REPORT

Prepared For: **Messenger Petroleum Inc**

525 S Main St  
Kingman KS 67068+1968

ATTN: Frank Mize

### **Wigger #1**

#### **23-16s-16e Osage,KS**

Start Date: 2015.06.21 @ 11:27:00

End Date: 2015.06.21 @ 19:08:00

Job Ticket #: 62927                      DST #: 1

Trilobite Testing, Inc  
1515 Commerce Parkway Hays, KS 67601  
ph: 785-625-4778 fax: 785-625-5620

Printed: 2015.06.24 @ 11:00:14



**TRILOBITE  
TESTING, INC**

# DRILL STEM TEST REPORT

Messenger Petroleum Inc  
525 S Main St  
Kingman KS 67068+1968  
ATTN: Frank Mize

**23-16s-16e Osage,KS**

**Wigger #1**

Job Ticket: 62927

**DST#: 1**

Test Start: 2015.06.21 @ 11:27:00

## GENERAL INFORMATION:

Formation: **Mississippian**  
 Deviated: No Whipstock: ft (KB)  
 Time Tool Opened: 14:31:00  
 Time Test Ended: 19:08:00  
 Interval: **1574.00 ft (KB) To 1598.00 ft (KB) (TVD)**  
 Total Depth: 1598.00 ft (KB) (TVD)  
 Hole Diameter: 7.88 inches Hole Condition: Fair  
 Test Type: Conventional Bottom Hole (Initial)  
 Tester: Jared Scheck  
 Unit No: 55  
 Reference Elevations: 1134.00 ft (KB)  
 1124.00 ft (CF)  
 KB to GR/CF: 10.00 ft

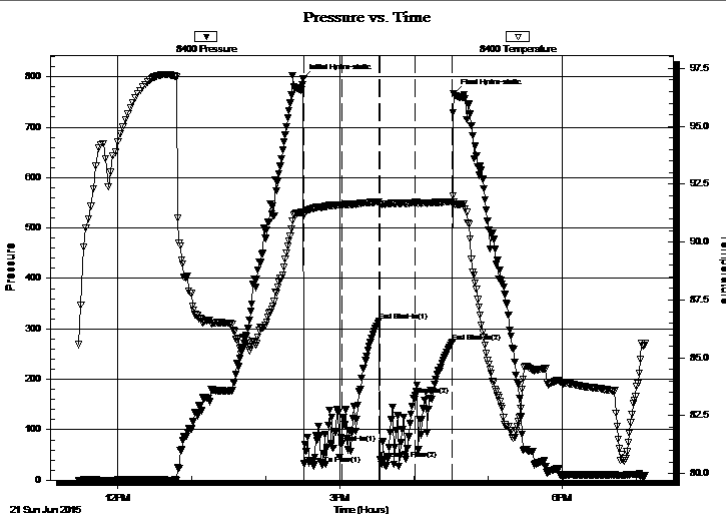
**Serial #: 8400**

**Inside**

Press@RunDepth: 168.63 psig @ 1575.00 ft (KB) Capacity: 5000.00 psig  
 Start Date: 2015.06.21 End Date: 2015.06.21 Last Calib.: 2015.06.21  
 Start Time: 11:28:00 End Time: 19:08:00 Time On Btm: 2015.06.21 @ 14:30:00  
 Time Off Btm: 2015.06.21 @ 16:32:00

**TEST COMMENT:** IFP- 30 Minutes-Very weak blow died off 15 minutes into open  
 ISIP-30 Minutes-No blow back  
 FFP-30 Minutes-weak surge did not build  
 FSIP-30 Minutes-No blow back

## PRESSURE SUMMARY



Time (Min.)	Pressure (psig)	Temp (deg F)	Annotation
0	795.90	91.30	Initial Hydro-static
1	32.28	91.21	Open To Flow (1)
32	72.23	91.58	Shut-In(1)
62	316.12	91.73	End Shut-In(1)
63	41.50	91.64	Open To Flow (2)
91	168.63	91.71	Shut-In(2)
121	273.25	91.73	End Shut-In(2)
122	767.04	91.73	Final Hydro-static

## Recovery

Length (ft)	Description	Volume (bbl)
2.00	VSOCM 1%o 99%m	0.01

## Gas Rates

	Choke (inches)	Pressure (psig)	Gas Rate (Mcf/d)



**TRILOBITE TESTING, INC**

# DRILL STEM TEST REPORT

Messenger Petroleum Inc  
 525 S Main St  
 Kingman KS 67068+1968  
 ATTN: Frank Mize

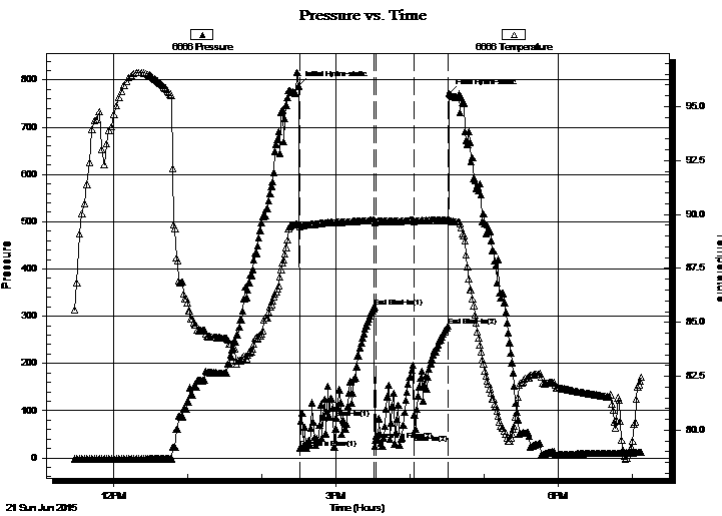
**23-16s-16e Osage,KS**  
**Wigger #1**  
 Job Ticket: 62927 **DST#: 1**  
 Test Start: 2015.06.21 @ 11:27:00

## GENERAL INFORMATION:

Formation: **Mississippian**  
 Deviated: No Whipstock: ft (KB)  
 Time Tool Opened: 14:31:00  
 Time Test Ended: 19:08:00  
**Interval: 1574.00 ft (KB) To 1598.00 ft (KB) (TVD)**  
 Total Depth: 1598.00 ft (KB) (TVD)  
 Hole Diameter: 7.88 inches Hole Condition: Fair  
 Test Type: Conventional Bottom Hole (Initial)  
 Tester: Jared Scheck  
 Unit No: 55  
 Reference Elevations: 1134.00 ft (KB)  
 1124.00 ft (CF)  
 KB to GR/CF: 10.00 ft

**Serial #: 6666 Outside**  
 Press@RunDepth: 278.75 psig @ 1576.00 ft (KB) Capacity: 5000.00 psig  
 Start Date: 2015.06.21 End Date: 2015.06.21 Last Calib.: 2015.06.21  
 Start Time: 11:28:00 End Time: 19:07:30 Time On Btm: 2015.06.21 @ 14:29:30  
 Time Off Btm: 2015.06.21 @ 16:31:30

**TEST COMMENT:** IFP- 30 Minutes-Very weak blow died off 15 minutes into open  
 ISIP-30Minutes-No blow back  
 FFP-30 Minutes-w eak surge did not build  
 FSIP-30 Minutes-No blow back



## PRESSURE SUMMARY

Time (Min.)	Pressure (psig)	Temp (deg F)	Annotation
0	787.20	89.54	Initial Hydro-static
1	21.02	89.45	Open To Flow (1)
31	84.88	89.64	Shut-In(1)
62	318.92	89.73	End Shut-In(1)
63	38.41	89.66	Open To Flow (2)
94	50.59	89.64	Shut-In(2)
121	278.75	89.73	End Shut-In(2)
122	771.55	89.74	Final Hydro-static

## Recovery

Length (ft)	Description	Volume (bbl)
2.00	VSOCM 1%o 99%m	0.01

## Gas Rates

	Choke (inches)	Pressure (psig)	Gas Rate (Mcf/d)



**TRILOBITE  
TESTING, INC**

# DRILL STEM TEST REPORT

**TOOL DIAGRAM**

Messenger Petroleum Inc  
525 S Main St  
Kingman KS 67068+1968  
ATTN: Frank Mize

**23-16s-16e Osage,KS**  
**Wigger #1**  
Job Ticket: 62927      **DST#: 1**  
Test Start: 2015.06.21 @ 11:27:00

**Tool Information**

Drill Pipe:	Length: 1266.00 ft	Diameter: 2.76 inches	Volume: 9.37 bbl	Tool Weight: 1000.00 lb
Heavy Wt. Pipe:	Length: 0.00 ft	Diameter: 0.00 inches	Volume: 0.00 bbl	Weight set on Packer: 20000.00 lb
Drill Collar:	Length: 300.00 ft	Diameter: 2.25 inches	Volume: 1.48 bbl	Weight to Pull Loose: 29000.00 lb
			<u>Total Volume: 10.85 bbl</u>	Tool Chased 0.00 ft
Drill Pipe Above KB:	20.00 ft			String Weight: Initial 26000.00 lb
Depth to Top Packer:	1574.00 ft			Final 26000.00 lb
Depth to Bottom Packer:	ft			
Interval between Packers:	24.00 ft			
Tool Length:	52.00 ft			
Number of Packers:	2	Diameter: 6.75 inches		

Tool Comments:

<b>Tool Description</b>	<b>Length (ft)</b>	<b>Serial No.</b>	<b>Position</b>	<b>Depth (ft)</b>	<b>Accum. Lengths</b>
-------------------------	--------------------	-------------------	-----------------	-------------------	-----------------------

Shut In Tool	5.00			1551.00	
Hydraulic tool	5.00			1556.00	
Jars	6.00			1562.00	
Safety Joint	2.00			1564.00	
Packer	5.00			1569.00	28.00      Bottom Of Top Packer
Packer	5.00			1574.00	
Recorder	1.00	8400	Inside	1575.00	
Recorder	1.00	6666	Outside	1576.00	
Anchor	18.00			1594.00	
Bullnose	4.00			1598.00	24.00      Bottom Packers & Anchor
<b>Total Tool Length:</b>	<b>52.00</b>				



**TRILOBITE  
TESTING, INC**

# DRILL STEM TEST REPORT

**FLUID SUMMARY**

Messenger Petroleum Inc  
525 S Main St  
Kingman KS 67068+1968  
ATTN: Frank Mize

**23-16s-16e Osage,KS**  
**Wigger #1**  
Job Ticket: 62927      **DST#: 1**  
Test Start: 2015.06.21 @ 11:27:00

## Mud and Cushion Information

Mud Type: Gel Chem	Cushion Type:	Oil API:	deg API
Mud Weight: 9.00 lb/gal	Cushion Length: ft	Water Salinity:	ppm
Viscosity: 53.00 sec/qt	Cushion Volume: bbl		
Water Loss: 9.18 in <sup>3</sup>	Gas Cushion Type:		
Resistivity: ohm.m	Gas Cushion Pressure: psig		
Salinity: 900.00 ppm			
Filter Cake: 2.00 inches			

## Recovery Information

Recovery Table

Length ft	Description	Volume bbl
2.00	VSOCM 1%o 99%m	0.010

Total Length: 2.00 ft      Total Volume: 0.010 bbl  
 Num Fluid Samples: 0      Num Gas Bombs: 0      Serial #:  
 Laboratory Name:      Laboratory Location:  
 Recovery Comments:

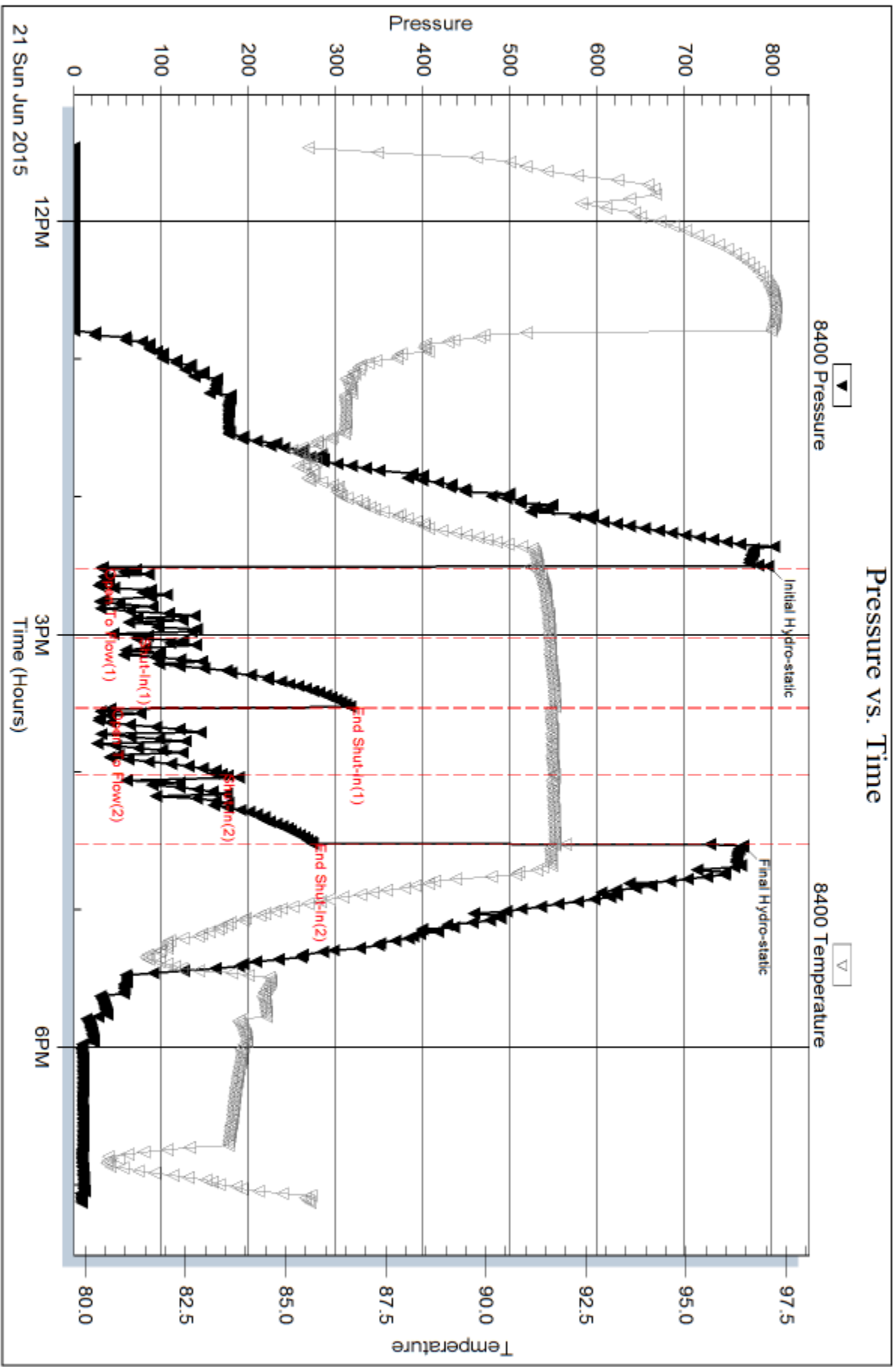
Serial #: 8400

Inside

Messenger Petroleum Inc

Wigger #1

DST Test Number: 1



Trioblique Testing, Inc

Ref. No: 62927

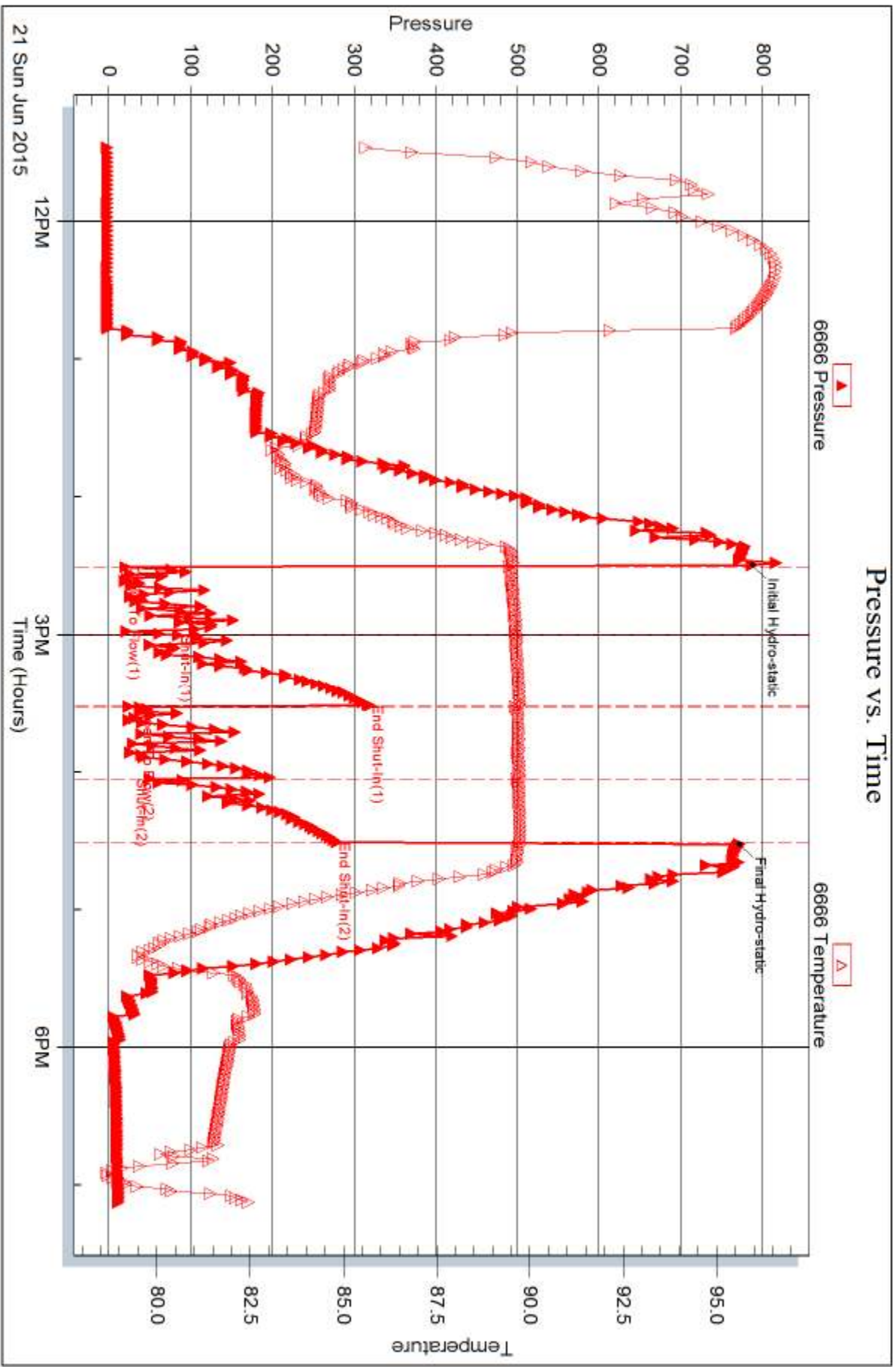
Printed: 2015.06.24 @ 11:00:15

Serial #: 6666

Outside Messenger Petroleum Inc

Wigger #1

DST Test Number: 1



Trilobite Testing, Inc

Ref. No: 62927

Printed: 2015.06.24 @ 11:00:15



## DRILL STEM TEST REPORT

Prepared For: **Messenger Petroleum Inc**

525 S Main St  
Kingman KS 67068+1968

ATTN: Frank Mize

### **Wigger #1**

#### **23-16s-16e Osage,KS**

Start Date: 2015.06.22 @ 01:17:00

End Date: 2015.06.22 @ 08:42:00

Job Ticket #: 62928                      DST #: 2

Trilobite Testing, Inc  
1515 Commerce Parkway Hays, KS 67601  
ph: 785-625-4778 fax: 785-625-5620

Printed: 2015.06.24 @ 10:59:43





**TRILOBITE  
TESTING, INC**

# DRILL STEM TEST REPORT

Messenger Petroleum Inc  
525 S Main St  
Kingman KS 67068+1968  
ATTN: Frank Mize

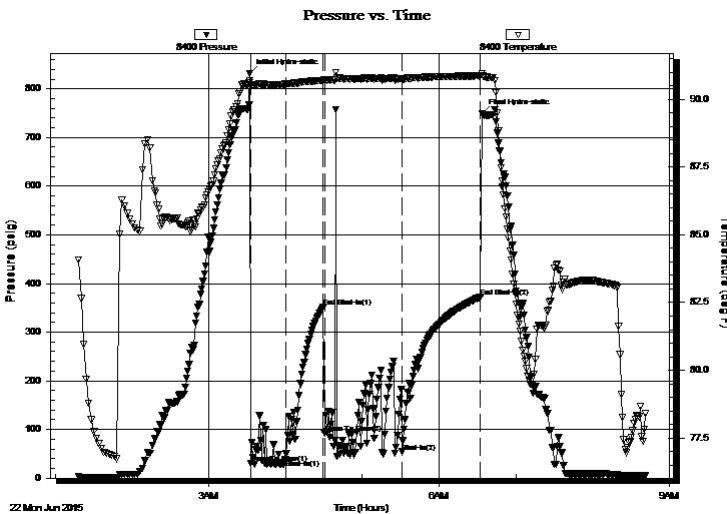
**23-16s-16e Osage,KS**  
**Wigger #1**  
Job Ticket: 62928 **DST#: 2**  
Test Start: 2015.06.22 @ 01:17:00

## GENERAL INFORMATION:

Formation: **Mississippian**  
Deviated: No Whipstock: ft (KB)  
Time Tool Opened: 03:32:30  
Time Test Ended: 08:42:00  
Interval: **1571.00 ft (KB) To 1611.00 ft (KB) (TVD)**  
Total Depth: 1611.00 ft (KB) (TVD)  
Hole Diameter: 7.88 inches Hole Condition: Fair  
Test Type: Conventional Bottom Hole (Initial)  
Tester: Jared Scheck  
Unit No: 55  
Reference Elevations: 1134.00 ft (KB)  
1124.00 ft (CF)  
KB to GR/CF: 10.00 ft

**Serial #: 8400 Inside**  
Press@RunDepth: 53.90 psig @ 1572.00 ft (KB) Capacity: 5000.00 psig  
Start Date: 2015.06.22 End Date: 2015.06.22 Last Calib.: 2015.06.22  
Start Time: 01:18:00 End Time: 08:42:00 Time On Btm: 2015.06.22 @ 03:32:00  
Time Off Btm: 2015.06.22 @ 06:33:30

**TEST COMMENT:** IFP-30 Minutes-Weak blow built 1/2 inch into bucket  
ISIP-30 Minutes-No blow back  
FFP-60 Minutes-Weak blow started to die off flushed tool good surge built 2 1/2 inches strated to die off  
FSIP-60 Minutes-No blow back



## PRESSURE SUMMARY

Time (Min.)	Pressure (psig)	Temp (deg F)	Annotation
0	831.85	90.69	Initial Hydro-static
1	29.87	90.50	Open To Flow (1)
28	38.99	90.56	Shut-In(1)
58	351.56	90.70	End Shut-In(1)
59	91.60	90.71	Open To Flow (2)
119	53.90	90.73	Shut-In(2)
181	372.77	90.86	End Shut-In(2)
182	749.33	90.95	Final Hydro-static

## Recovery

Length (ft)	Description	Volume (bbl)
32.00	VSOCM 3%oil 97%mud	0.16

## Gas Rates

	Choke (inches)	Pressure (psig)	Gas Rate (Mcf/d)



**TRILOBITE  
TESTING, INC**

# DRILL STEM TEST REPORT

Messenger Petroleum Inc  
525 S Main St  
Kingman KS 67068+1968  
ATTN: Frank Mize

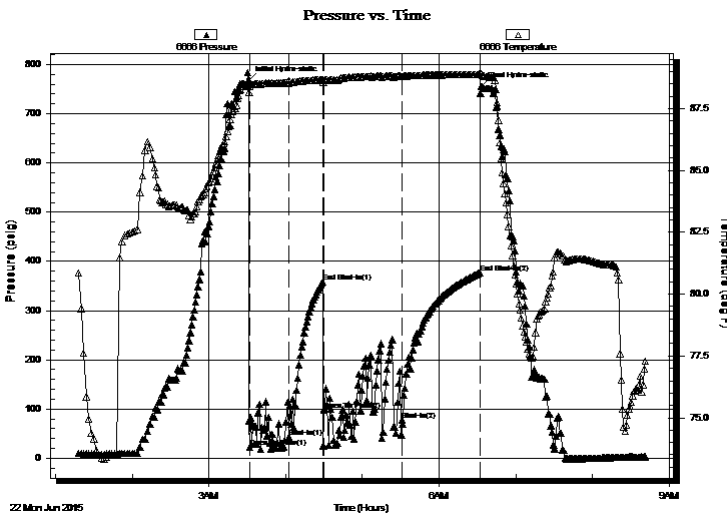
**23-16s-16e Osage,KS**  
**Wigger #1**  
Job Ticket: 62928 **DST#: 2**  
Test Start: 2015.06.22 @ 01:17:00

## GENERAL INFORMATION:

Formation: **Mississippian**  
Deviated: No Whipstock: ft (KB)  
Time Tool Opened: 03:32:30  
Time Test Ended: 08:42:00  
Interval: **1571.00 ft (KB) To 1611.00 ft (KB) (TVD)**  
Total Depth: 1611.00 ft (KB) (TVD)  
Hole Diameter: 7.88 inches Hole Condition: Fair  
Test Type: Conventional Bottom Hole (Initial)  
Tester: Jared Scheck  
Unit No: 55  
Reference Elevations: 1134.00 ft (KB)  
1124.00 ft (CF)  
KB to GR/CF: 10.00 ft

**Serial #: 6666 Outside**  
Press@RunDepth: 376.79 psig @ 1573.00 ft (KB) Capacity: 5000.00 psig  
Start Date: 2015.06.22 End Date: 2015.06.22 Last Calib.: 2015.06.22  
Start Time: 01:18:00 End Time: 08:41:30 Time On Btm: 2015.06.22 @ 03:31:00  
Time Off Btm: 2015.06.22 @ 06:33:00

**TEST COMMENT:** IFP-30 Minutes-Weak blow built 1/2 inch into bucket  
ISIP-30 Minutes-No blow back  
FFP-60 Minutes-Weak blow started to die off flushed tool good surge built 2 1/2 inches strated to die off  
FSIP-60 Minutes-No blow back



## PRESSURE SUMMARY

Time (Min.)	Pressure (psig)	Temp (deg F)	Annotation
0	768.22	88.49	Initial Hydro-static
1	21.82	88.42	Open To Flow (1)
32	43.69	88.53	Shut-In(1)
58	357.63	88.68	End Shut-In(1)
59	98.26	88.65	Open To Flow (2)
120	78.40	88.81	Shut-In(2)
181	376.79	88.89	End Shut-In(2)
182	755.80	88.91	Final Hydro-static

## Recovery

Length (ft)	Description	Volume (bbl)
32.00	VSOCM 3%oil 97%mud	0.16

## Gas Rates

	Choke (inches)	Pressure (psig)	Gas Rate (Mcf/d)



**TRILOBITE  
TESTING, INC**

# DRILL STEM TEST REPORT

**TOOL DIAGRAM**

Messenger Petroleum Inc  
525 S Main St  
Kingman KS 67068+1968  
ATTN: Frank Mize

**23-16s-16e Osage,KS**  
**Wigger #1**  
Job Ticket: 62928      **DST#: 2**  
Test Start: 2015.06.22 @ 01:17:00

**Tool Information**

Drill Pipe:	Length: 1263.00 ft	Diameter: 2.76 inches	Volume: 9.35 bbl	Tool Weight: 1000.00 lb
Heavy Wt. Pipe:	Length: 0.00 ft	Diameter: 0.00 inches	Volume: 0.00 bbl	Weight set on Packer: 20000.00 lb
Drill Collar:	Length: 300.00 ft	Diameter: 2.25 inches	Volume: 1.48 bbl	Weight to Pull Loose: 30000.00 lb
			<u>Total Volume: 10.83 bbl</u>	Tool Chased 0.00 ft
Drill Pipe Above KB:	20.00 ft			String Weight: Initial 26000.00 lb
Depth to Top Packer:	1571.00 ft			Final 26000.00 lb
Depth to Bottom Packer:	ft			
Interval between Packers:	34.00 ft			
Tool Length:	62.00 ft			
Number of Packers:	2	Diameter: 6.75 inches		

Tool Comments:

<b>Tool Description</b>	<b>Length (ft)</b>	<b>Serial No.</b>	<b>Position</b>	<b>Depth (ft)</b>	<b>Accum. Lengths</b>
-------------------------	--------------------	-------------------	-----------------	-------------------	-----------------------

Shut In Tool	5.00			1548.00	
Hydraulic tool	5.00			1553.00	
Jars	6.00			1559.00	
Safety Joint	2.00			1561.00	
Packer	5.00			1566.00	28.00      Bottom Of Top Packer
Packer	5.00			1571.00	
Recorder	1.00	8400	Inside	1572.00	
Recorder	1.00	6666	Outside	1573.00	
Anchor	28.00			1601.00	
Bullnose	4.00			1605.00	34.00      Bottom Packers & Anchor
<b>Total Tool Length:</b>	<b>62.00</b>				



**TRILOBITE  
TESTING, INC**

# DRILL STEM TEST REPORT

**FLUID SUMMARY**

Messenger Petroleum Inc  
525 S Main St  
Kingman KS 67068+1968  
ATTN: Frank Mize

**23-16s-16e Osage,KS**  
**Wigger #1**  
Job Ticket: 62928      **DST#: 2**  
Test Start: 2015.06.22 @ 01:17:00

## Mud and Cushion Information

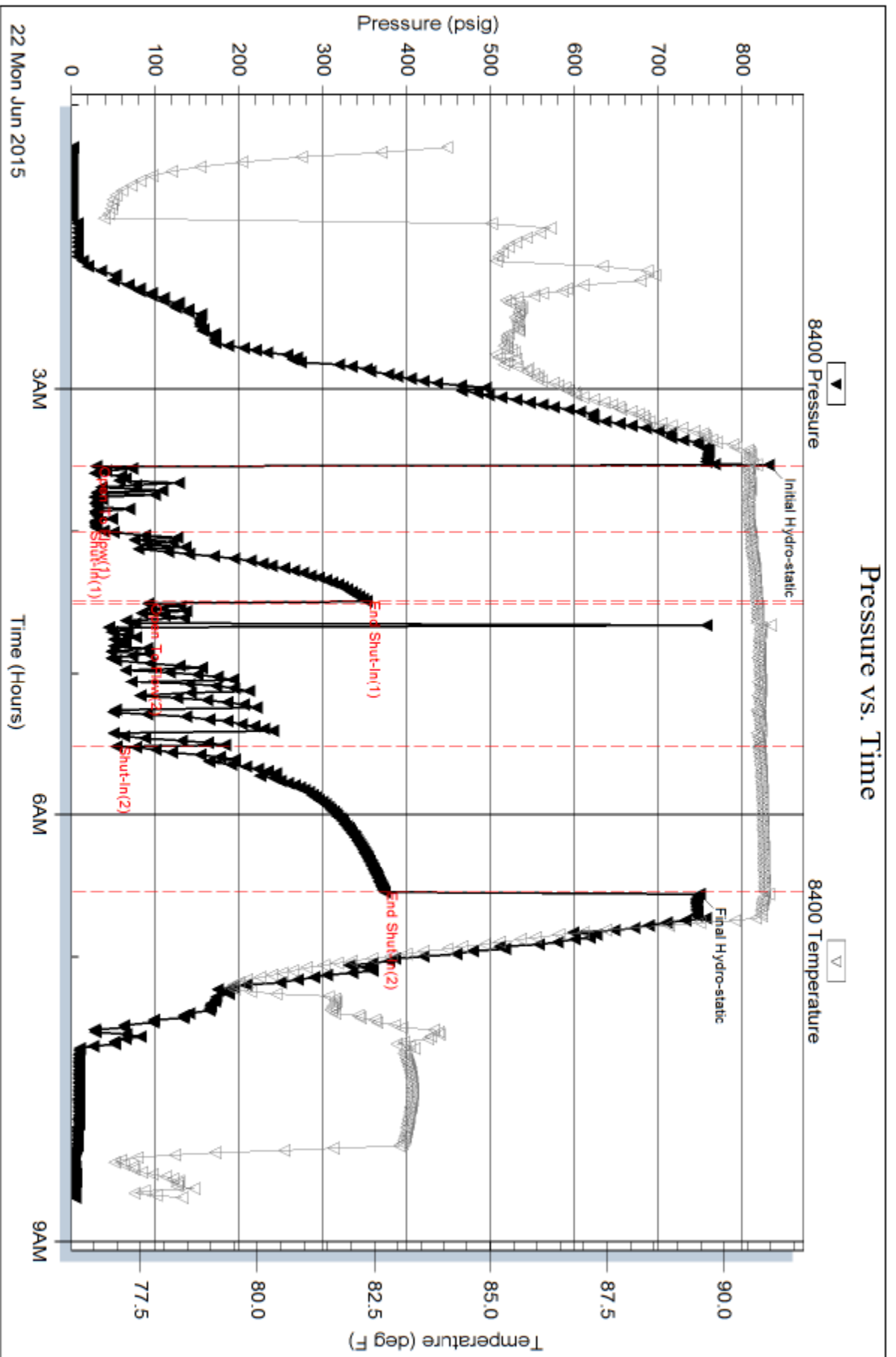
Mud Type: Gel Chem	Cushion Type:	Oil API:	deg API
Mud Weight: 9.00 lb/gal	Cushion Length: ft	Water Salinity:	ppm
Viscosity: 53.00 sec/qt	Cushion Volume: bbl		
Water Loss: 9.19 in <sup>3</sup>	Gas Cushion Type:		
Resistivity: ohm.m	Gas Cushion Pressure: psig		
Salinity: 900.00 ppm			
Filter Cake: 2.00 inches			

## Recovery Information

Recovery Table

Length ft	Description	Volume bbl
32.00	VSOCM 3%oil 97%mud	0.157

Total Length: 32.00 ft      Total Volume: 0.157 bbl  
Num Fluid Samples: 0      Num Gas Bombs: 0      Serial #:  
Laboratory Name:      Laboratory Location:  
Recovery Comments:

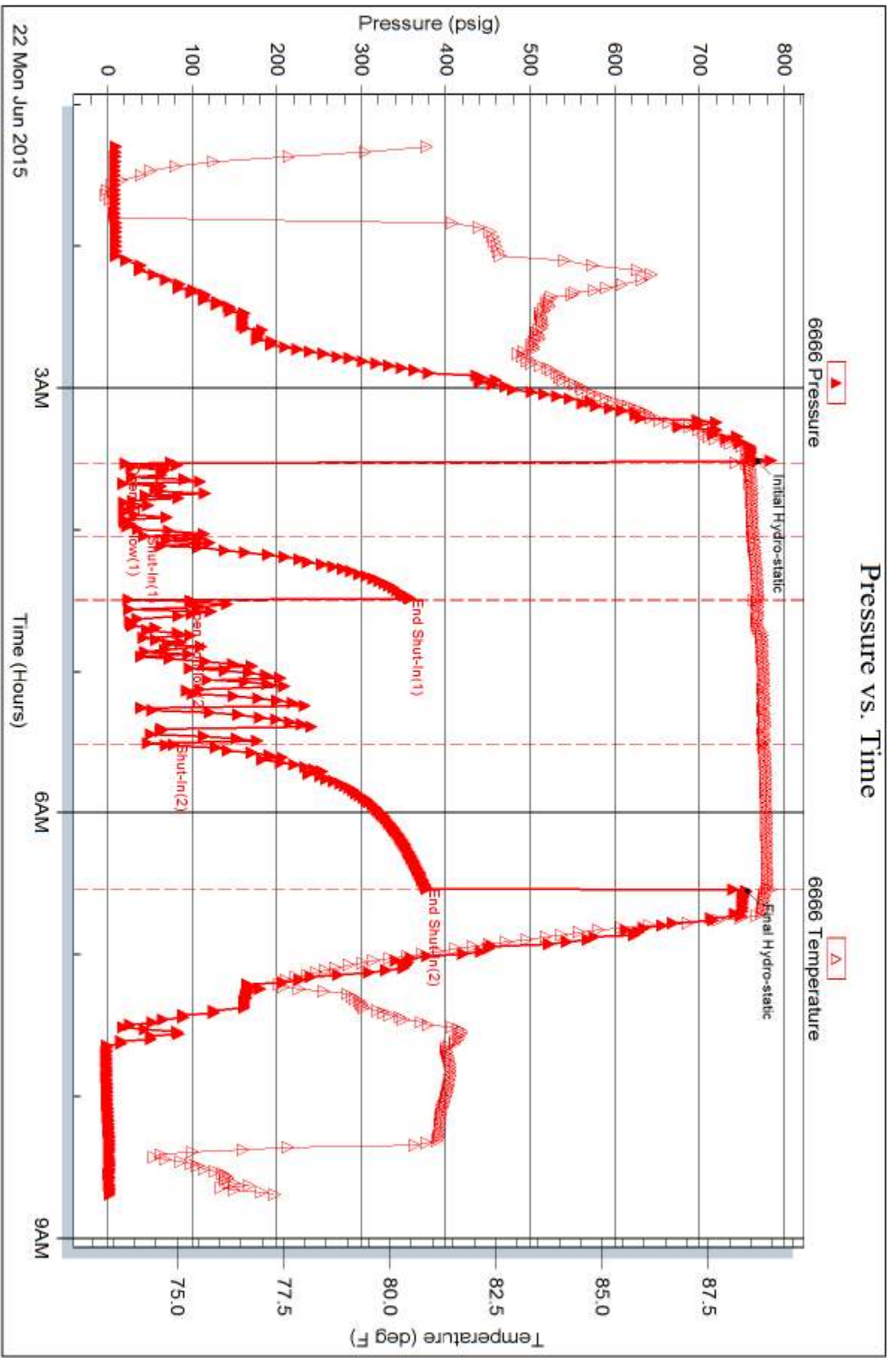


Serial #: 6666

Outside Messenger Petroleum Inc

Wigger #1

DST Test Number: 2





# TRILOBITE TESTING INC.

1515 Commerce Parkway • Hays, Kansas 67601

## Test Ticket

NO. 62927

Well Name & No. Wigger #1 Test No. 1 Date 6-21-2015  
 Company Messenger Petroleum Inc Elevation 1134 KB 1124 GL  
 Address 525 S Main St Kingman KS 67068-1968  
 Co. Rep / Geo. Frank Mize Rig Summit Drilling Company  
 Location: Sec. 23 Twp. 16 Rge. 16 Co. Osage State KS

Interval Tested 1574 - 1598 Zone Tested Mississippian  
 Anchor Length 24 Drill Pipe Run \_\_\_\_\_ Mud Wt. 9.4  
 Top Packer Depth 1569 Drill Collars Run \_\_\_\_\_ Vis 53  
 Bottom Packer Depth 1574 Wt. Pipe Run \_\_\_\_\_ WL 9.2  
 Total Depth 1598 Chlorides 900 ppm System LCM 4

Blow Description IFP - Very weak Blow Died off 15 minutes i-to open  
ISIP - NO Blow Back  
FFP - Very Weak Blow Did not Build  
FSIP - NO Blow Back

Rec	Feet of	%gas	%oil	%water	%mud
<u>2</u>	<u>Oil Spack mud</u>			<u>99</u>	
Rec	Feet of	%gas	%oil	%water	%mud
Rec	Feet of	%gas	%oil	%water	%mud
Rec	Feet of	%gas	%oil	%water	%mud
Rec	Feet of	%gas	%oil	%water	%mud

Rec Total \_\_\_\_\_ BHT \_\_\_\_\_ Gravity \_\_\_\_\_ API RW \_\_\_\_\_ @ \_\_\_\_\_ °F Chlorides \_\_\_\_\_ ppm

(A) Initial Hydrostatic 795  Test 1050 T-On Location 9:00 AM  
 (B) First Initial Flow 32  Jars 250 T-Started 11:27 AM  
 (C) First Final Flow 72  Safety Joint 75 T-Open 2:29 PM  
 (D) Initial Shut-In 316  Circ Sub \_\_\_\_\_ T-Pulled 4:29 PM  
 (E) Second Initial Flow 41  Hourly Standby \_\_\_\_\_ T-Out 19:08  
 (F) Second Final Flow 168  Mileage 400 At Great Bend Comments NO Circulation Steps  
 (G) Final Shut-In 273  Sampler 380  
 (H) Final Hydrostatic 767  Straddle \_\_\_\_\_  Ruined Shale Packer \_\_\_\_\_  
 Shale Packer \_\_\_\_\_  Ruined Packer \_\_\_\_\_  
 Extra Packer \_\_\_\_\_  Extra Copies \_\_\_\_\_  
 Initial Open 30  Extra Recorder \_\_\_\_\_ Sub Total 0  
 Initial Shut-In 30  Day Standby \_\_\_\_\_ Total 1905  
 Final Flow 30  Accessibility 150 MP/DST Disc't \_\_\_\_\_  
 Final Shut-In 30 Sub Total 1905

Approved By [Signature] Our Representative [Signature]

TriLOBite Testing Inc. shall not be liable for damaged of any kind of the property or personnel of the one for whom a test is made, or for any loss suffered or sustained, directly or indirectly, through the use of its equipment, or its statements or opinion concerning the results of any test, tools lost or damaged in the hole shall be paid for at cost by the party for whom the test is made.



# TRILOBITE TESTING INC.

1515 Commerce Parkway • Hays, Kansas 67601

## Test Ticket

NO. 62928

Well Name & No. Wigger #1 Test No. 2 Date 6-22-2015  
 Company Messenger Petroleum Inc Elevation 1134 KB 1124 GL  
 Address 525 Smain St Haysman KS 67068 + 1968  
 Co. Rep / Geo. Frank Mize Rig Summit Drilling  
 Location: Sec. 23 Twp. 16 Rge. 16 Co. Osage State KS

Interval Tested 1576-1611 Zone Tested Mississippian  
 Anchor Length 34 Drill Pipe Run \_\_\_\_\_ Mud Wt. 9.4  
 Top Packer Depth 1571 Drill Collars Run \_\_\_\_\_ Vis 53  
 Bottom Packer Depth 876 Wt. Pipe Run \_\_\_\_\_ WL 9.2  
 Total Depth 1611 Chlorides 900 ppm System LCM 4

Blow Description I FP - weak blow Built 1/2 inch started to die off  
ISIP - NO Blow Back  
FFP - Weak Blow started Die Flushed Tool Good Surge Built 2 inches Died off  
FSIP - NO Blow Back

Rec	Feet of	%gas	%oil	%water	%mud
<u>32</u>	<u>slightly oil mud</u>		<u>3</u>		<u>97</u>
Rec	Feet of	%gas	%oil	%water	%mud
Rec	Feet of	%gas	%oil	%water	%mud
Rec	Feet of	%gas	%oil	%water	%mud
Rec	Feet of	%gas	%oil	%water	%mud

Rec Total \_\_\_\_\_ BHT \_\_\_\_\_ Gravity \_\_\_\_\_ API RW \_\_\_\_\_ @ \_\_\_\_\_ °F Chlorides \_\_\_\_\_ ppm

(A) Initial Hydrostatic 831  Test 1050 T-On Location 12:00  
 (B) First Initial Flow 29  Jars 250 T-Started 1:17 AM  
 (C) First Final Flow 38  Safety Joint 75 T-Open 3:30  
 (D) Initial Shut-In 351  Circ Sub \_\_\_\_\_ T-Pulled 6:30  
 (E) Second Initial Flow 91  Hourly Standby \_\_\_\_\_ T-Out 8:42 AM  
 (F) Second Final Flow 53  Mileage 400 RT Great Bend Comments the catwalk steps  
 (G) Final Shut-In 372  Sampler 380  
 (H) Final Hydrostatic 749  Straddle \_\_\_\_\_  Ruined Shale Packer \_\_\_\_\_  
 Shale Packer \_\_\_\_\_  Ruined Packer \_\_\_\_\_  
 Extra Packer \_\_\_\_\_  Extra Copies \_\_\_\_\_  
 Extra Recorder \_\_\_\_\_ Sub Total 0  
 Day Standby \_\_\_\_\_ Total 1905  
 Accessibility 150 MP/DST Disc't \_\_\_\_\_  
 Sub Total 1905

Approved By \_\_\_\_\_ Our Representative [Signature]  
 Trilobite Testing Inc. shall not be liable for damaged of any kind of the property or personnel of the one for whom a test is made, or for any loss suffered or sustained, directly or indirectly, through the use of its equipment, or its statements or opinion concerning the results of any test, tools lost or damaged in the hole shall be paid for at cost by the party for whom the test is made.