

**IMPORTANT**  
 Kans. Geo. Survey request  
 samples on this well.

**KANSAS DRILLERS LOG**

S.8 T.33 R.4 E EAST

API No. 15 — 035 — 22,442  
 County Number

Loc. NE SE SW

County Cowley

Operator  
 Halliburton Oil Producing Co.

Address  
 2915 Classen Blvd., #300 Okla City, Okla 73106

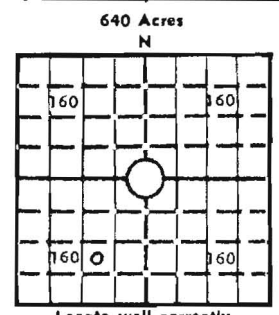
Well No. #1 Lease Name Goodnight

Footage Location  
 990 feet from (N/S) line 330 feet from (E/W) line SW/4

Principal Contractor White & Ellis Drilling Geologist Copeland Landes

Spud Date February 14, 1980 Total Depth 3284' P.B.T.D.

Date Completed February 29, 1980 Oil Purchaser D&A



Locate well correctly  
 Elev.: Gr. 1189'

DF 1192' KB 1194'

**CASING RECORD**

Report of all strings set — surface, intermediate, production, etc.

Purpose of string	Size hole drilled	Size casing set (in O.D.)	Weight lbs/ft.	Setting depth	Type cement	Sacks	Type and percent additives
Surface	12 1/4"	8-5/8	28#	200'	Common	100	3% Cacl 1/4 Sx floseal

**LINER RECORD**

**PERFORATION RECORD**

Top, ft.	Bottom, ft.	Sacks cement	Shots per ft.	Size & type	Depth interval

**TUBING RECORD**

Size	Setting depth	Packer set at

**ACID, FRACTURE, SHOT, CEMENT SQUEEZE RECORD**

Amount and kind of material used	Depth interval treated

**INITIAL PRODUCTION**

Date of first production D&A	Producing method (flowing, pumping, gas lift, etc.)				
RATE OF PRODUCTION PER 24 HOURS	Oil bbls.	Gas MCF	Water bbls.	Gas-oil ratio	CFPB
Disposition of gas (vented, used on lease or sold)			Producing interval(s)		

INSTRUCTIONS: As provided in KCC Rule 82-2-125, within 90 days after completion of a well, one completed copy of this Drillers Log shall be transmitted to the State Geological Survey of Kansas, 4150 Manroe Street, Wichita, Kansas 67209. Copies of this form are available from the Conservation Division, State Corporation Commission, 3830 So. Meridian (P.O. Box 17027), Wichita, Kansas 66217. Phone AC 316-522-2206. If confidential custody is desired, please note Rule 82-2-125. Drillers Logs will be on open file in the Oil and Gas Division, State Geological Survey of Kansas, Lawrence, Kansas 66044.

Operator

Halliburton Oil Producing Company

DESIGNATE TYPE OF COMP.: OIL, GAS,  
DRY HOLE, SWDW, ETC.:

D&A

Well No.

#1

Lease Name

GOODNIGHT

S 8 T 33 R 4 E  
XWX

**WELL LOG**

Show all important zones of porosity and contents thereof; cored intervals, and all drill-stem tests, including depth interval tested, cushion used, time tool open, flowing and shut-in pressures, and recoveries.

SHOW GEOLOGICAL MARKERS, LOGS RUN,  
OR OTHER DESCRIPTIVE INFORMATION.

FORMATION DESCRIPTION, CONTENTS, ETC.	TOP	BOTTOM	NAME	DEPTH
Sandstone, white, medium-coarse grains, rounded to subrounded, good porosity with oil stain and free oil	3222	3238	Upper Layton Sand	2578
			Lower Layton Sand	2616
<u>DST #1</u> 30-60-60-120	3224	3240	Kansas City	2742
Rec. 540' oil specked salt water			Base Kansas	
IFP 31-105			City	2852
FFP 137-221			Marmaton-	
SIP 1244/1274			Oswego	2931
			Cherokee	3047
Chert, white, fresh	3254	3270	Bartlesville	
			Sand	3223
<u>DST #2</u> 30-30-60-120	3257	3284	Mississippi	3251
Rec. 30' Drilling Mud				
IFP 31-41				
FFP 52-63				
SIP 337/907				
			Ran Welex Gamma=Guard, Sidewall Neutron Log	
	RTD	3284		
	LTD	3286		

USE ADDITIONAL SHEETS, IF NECESSARY, TO COMPLETE WELL RECORD.

Date Received

*Sew P. Murray*  
Signature

Geologist  
Title

March 19, 1980  
Date

OPERATOR: Halliburton Oil Producing Co.; 2915 Classen Bldg.; Oklahoma City, Okla.  
CONTRACTOR: **White & Ellis Drilling, Inc., Box 448, El Dorado, Kansas 67042**

Lease Name Goodnight Well No. 1

Sec. 8 T. 33 R. 4E Spot NE SE SW

County Cowley State Kansas Elevation \_\_\_\_\_

Casing Record:

Surface: 8 5/8" @ 200' with 100 Sxs.

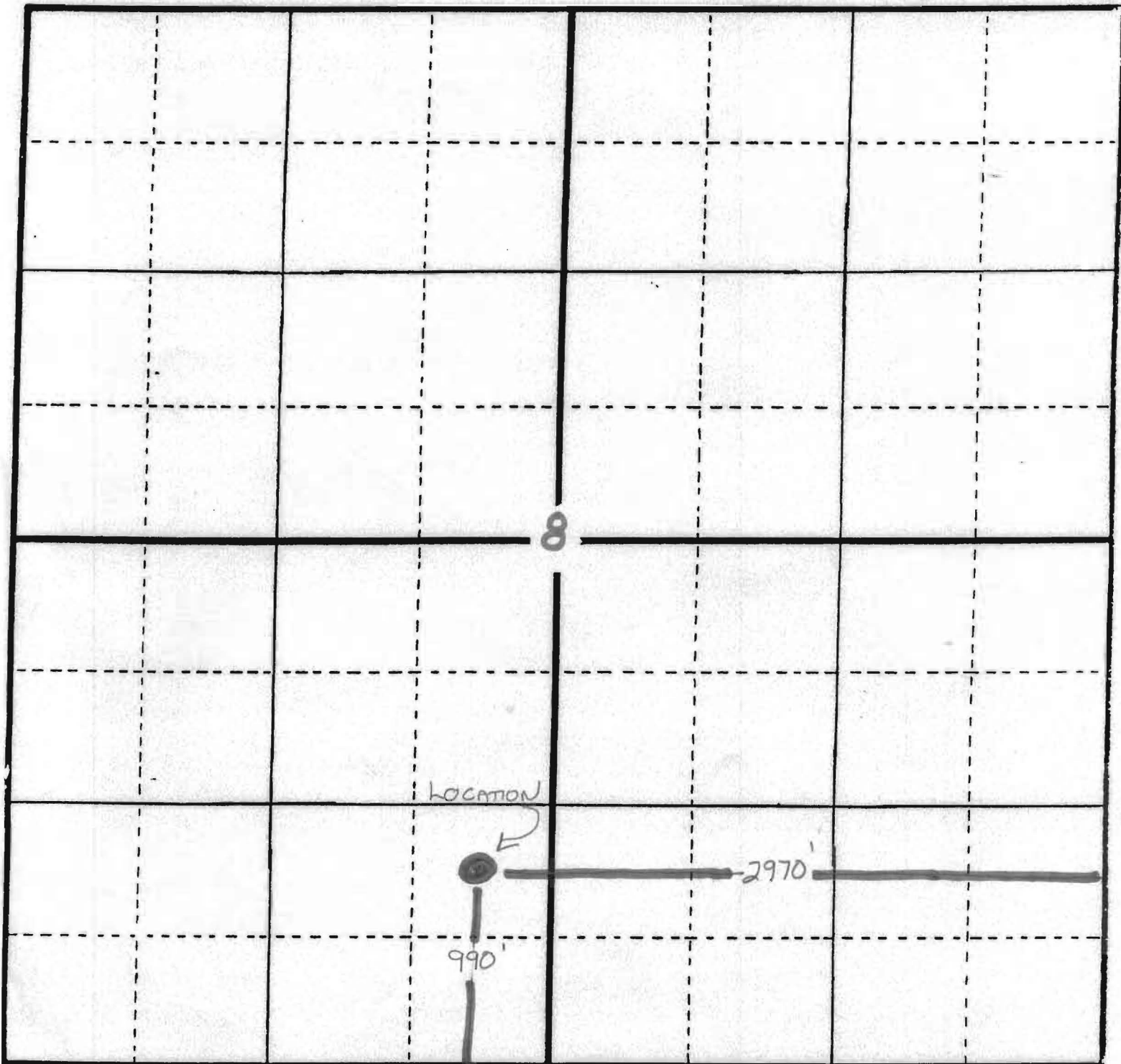
Production: \_\_\_\_\_ @ \_\_\_\_\_ with \_\_\_\_\_ Sxs.

Type Well: D & A Total Depth 3284' KB

Drilling Commenced: 2/23/80 Drilling Completed 2/29/80

Formation	From	To	Tops
Cellar	0	7	Stalnaker - 1910
Shale, Lime	7	1910	Layton - 2615
Sand	1910	2030	Kansas City - 2741
Shale	2030	2160	Cherokee - 3045
Sand	2160	2250	Bartlesville - 3223
Shale	2250	2615	Mississippi - 3254
Sand	2615	2638	
Shale	2638	2741	
Lime	2741	2853	
Shale	2853	2870	
Shale, Sand	2870	2325	
Lime	2925	3045	
Shale	3045	3223	
Sand	3223	3236	
Shale	3236	3254	
Lime	3254	3284	

Township 33, Range 4 E, County COWLEY, State KANSAS



ALTON OIL LLC.  
KENNA #2 SWD

26' SWD

-1571-