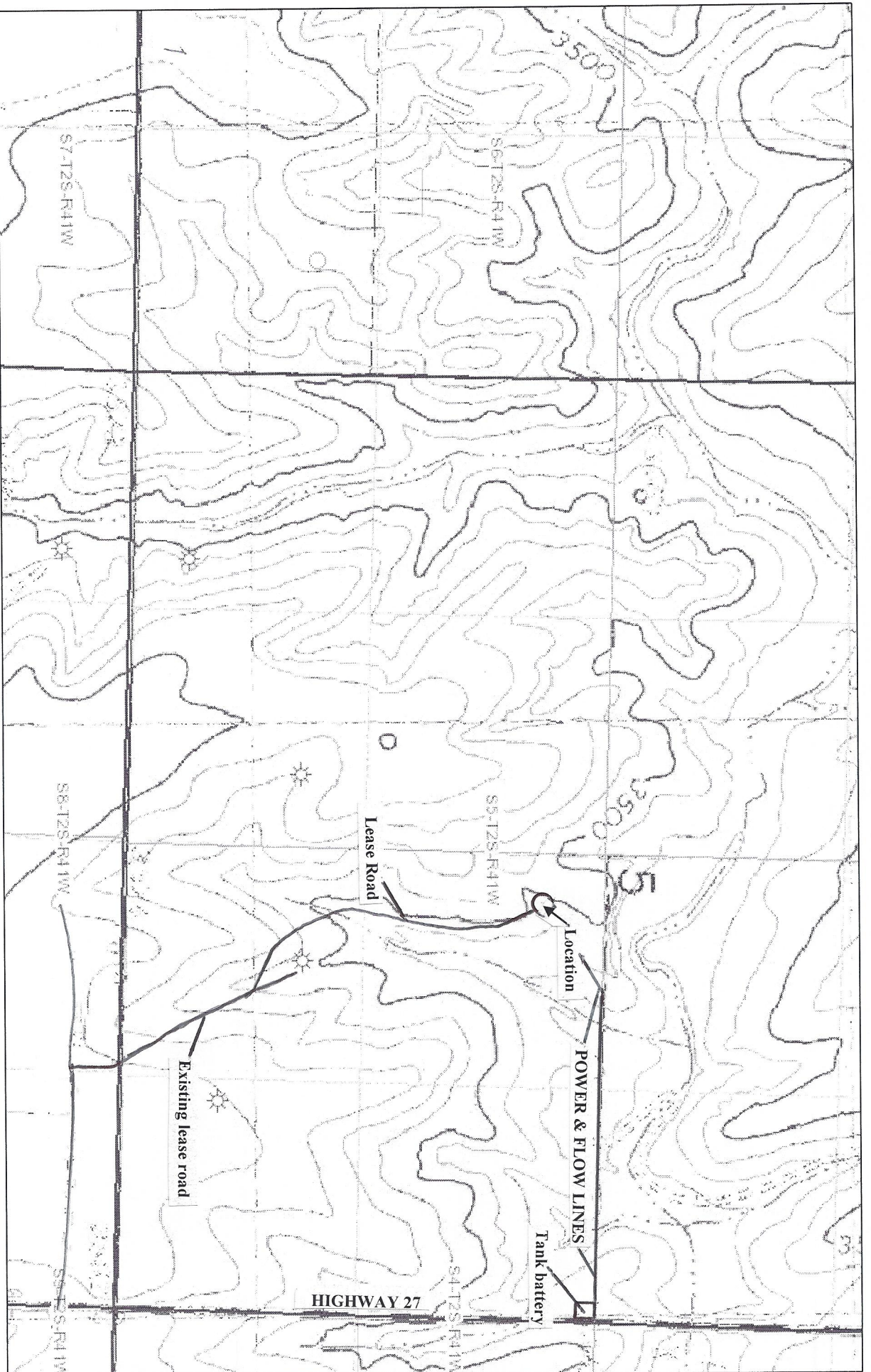
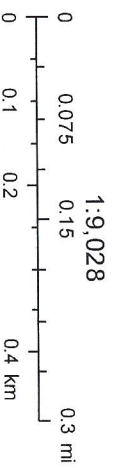


BAMMES-BRUNNSWIG 33-05D



August 5, 2015

CNWNWSE SEC 5 T2S, R41W
CHEYENNE COUNTY, KANSAS



Sources: Esri, HERE, DeLorme, Intermap, Inrement P Corp., GEBCO, USGS, FAO, NPS, NRCAN, Geobase, IGN, Kadaster NL, Ordnance Survey,