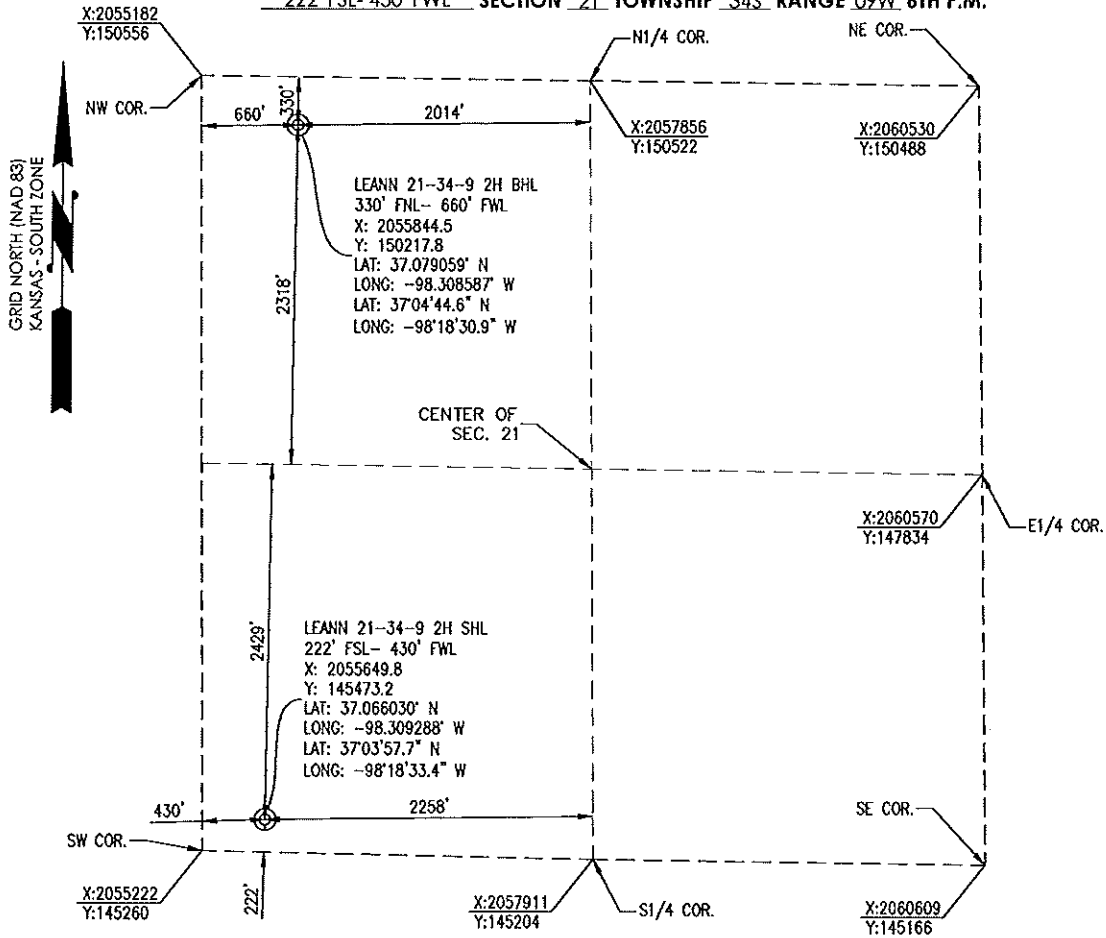


1000 LedgeLawn Drive  
 Conway, Arkansas 72034  
 501.328.3316 | 501.328.3325 f  
 www.craftontull.com



HARPER COUNTY, KANSAS  
 222' FSL- 430' FWL SECTION 21 TOWNSHIP 34S RANGE 09W 6TH P.M.



**ELEVATION:**  
 1,278' GR. AT STAKE

OPERATOR: TAPSTONE ENERGY WELL NO: 2H

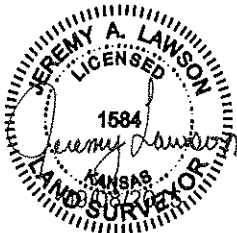
LEASE NAME: LEANN 21-34-9

TOPOGRAPHIC & VEGETATION: LOCATION FELL IN A FIELD

GOOD DRILL SITE: YES REFERENCE STAKES OR ALTERNATE LOCATION STAKES SET: NO

BEST ACCESSIBILITY TO LOCATION: SOUTH OR WEST LINE

DISTANCE & DIRECTION FROM HWY JCT OR TOWN: FROM THE JCT. OF STATE HWY 2 AND SW 150 AVENUE, TRAVEL SOUTH ON SW 150 AVENUE FOR APPROXIMATELY 6 MILES TO THE SW CORNER OF S.21-T34S-R09W.



(THE FOLLOWING INFORMATION WAS GATHERED USING A GPS RECEIVER ACCURACY ±2-3 METERS)

GPS DATUM: NAD-27  
 LAT: 37.066030° N  
 LONG: -98.309288° W

STATE PLANE COORDINATES:  
 ZONE: KS-SOUTH NAD-27  
 X: 2055649.8  
 Y: 145473.2

DATE STAKED: 8-31-15

**GENERAL NOTES:**  
 THE TIES AND FOOTAGES SHOWN ON THIS PLAT ARE FROM LINES OF OCCUPATION FROM A SURVEY MADE ON THE GROUND AND / OR BEARING AND DISTANCES FROM THE GENERAL LAND OFFICE PLAT OF THE AREA SHOWN AND MAY NOT BE THE ACTUAL PROPERTY CORNERS. THIS PLAT DOES NOT REPRESENT A TRUE BOUNDARY SURVEY. DRILL SITE CONDITION DETERMINATIONS WERE MADE BY SANDRIDGE ENERGY INC. REPRESENTATIVES.



REVISION			
	"LEANN 21-34-9 2H" PART OF THE SW 1/4 OF SECTION 21, T-34-S, R-09-W PROPOSED DRILL SITE HARPER COUNTY, KANSAS		
	SCALE: 1" = 1000'	DRAWN BY: J.PARKER	SHEET NO.: 1 OF 5
	PLOT DATE: 09-08-2015		