



**TRILOBITE TESTING, INC.**

# DRILL STEM TEST REPORT

Sam Gsry Jr. & Associates

**30-2S-32W-Rawlins**

1515 Wynkoop, Ste 700  
Denver Co, 80202

**Holste Farms #1-30**

Job Ticket: 64976

**DST#: 2**

ATTN: Clayton Camozzi

Test Start: 2015.06.03 @ 06:20:00

## GENERAL INFORMATION:

Formation: **LKC 'H'**

Deviated: No Whipstock: ft (KB)

Time Tool Opened: 08:17:45

Time Test Ended: 14:05:00

Test Type: Conventional Bottom Hole (Initial)

Tester: Royal Fisher

Unit No: 54

**Interval: 3858.00 ft (KB) To 3906.00 ft (KB) (TVD)**

Reference Elevations: 2780.00 ft (KB)

Total Depth: 3906.00 ft (KB) (TVD)

2775.00 ft (CF)

Hole Diameter: 7.88 inches Hole Condition: Good

KB to GR/CF: 5.00 ft

**Serial #: 6753**

**Outside**

Press@RunDepth: 454.67 psig @ 3859.00 ft (KB)

Capacity: 8000.00 psig

Start Date: 2015.06.03

End Date:

2015.06.03

Last Calib.:

2015.06.03

Start Time: 06:20:05

End Time:

14:04:59

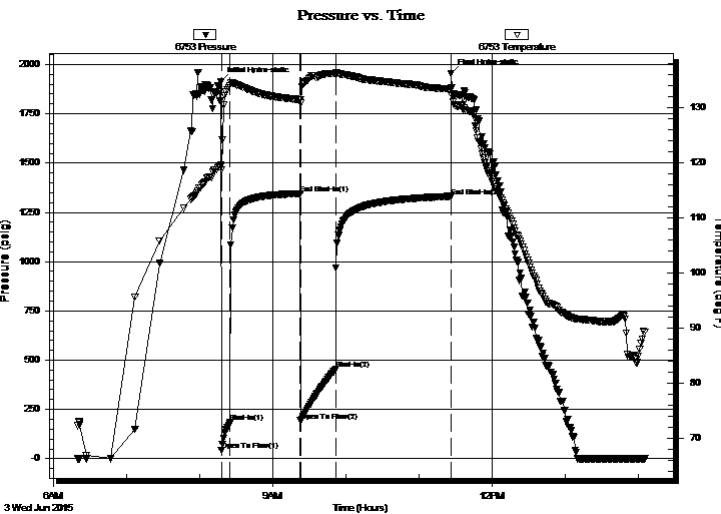
Time On Btm:

2015.06.03 @ 08:17:30

Time Off Btm:

2015.06.03 @ 11:26:15

**TEST COMMENT:** 5 - IF - Bottom of the bucket in 5 mins.  
60 - ISI - No Return  
30 - FF - Bottom of the bucket in 4 mins.  
90 - FSI - No Return



## PRESSURE SUMMARY

Time (Min.)	Pressure (psig)	Temp (deg F)	Annotation
0	1911.33	119.59	Initial Hydro-static
1	41.74	118.82	Open To Flow (1)
8	182.65	134.05	Shut-In(1)
65	1345.86	131.48	End Shut-In(1)
66	192.59	130.84	Open To Flow (2)
94	454.67	136.18	Shut-In(2)
189	1331.36	133.41	End Shut-In(2)
189	1952.70	133.49	Final Hydro-static

## Recovery

Length (ft)	Description	Volume (bbl)
760.00	MW- 95W - 5M	8.39
200.00	MW - 55W - 45M	2.81

## Gas Rates

	Choke (inches)	Pressure (psig)	Gas Rate (Mcf/d)





**TRILOBITE  
TESTING, INC**

# DRILL STEM TEST REPORT

## FLUID SUMMARY

Sam Gsry Jr. & Associates

**30-2S-32W-Rawlins**

1515 Wynkoop, Ste 700  
Denver Co, 80202

**Holste Farms #1-30**

Job Ticket: 64976

**DST#: 2**

ATTN: Clayton Camozzi

Test Start: 2015.06.03 @ 06:20:00

### Mud and Cushion Information

Mud Type: Gel Chem

Cushion Type:

Oil API:

deg API

Mud Weight: 9.00 lb/gal

Cushion Length:

ft

Water Salinity:

46000 ppm

Viscosity: 50.00 sec/qt

Cushion Volume:

bbbl

Water Loss: 8.79 in<sup>3</sup>

Gas Cushion Type:

Resistivity: 0.00 ohm.m

Gas Cushion Pressure:

psig

Salinity: 500.00 ppm

Filter Cake: 1.00 inches

### Recovery Information

Recovery Table

Length ft	Description	Volume bbbl
760.00	MW- 95W - 5M	8.395
200.00	MW - 55W - 45M	2.805

Total Length: 960.00 ft

Total Volume: 11.200 bbl

Num Fluid Samples: 0

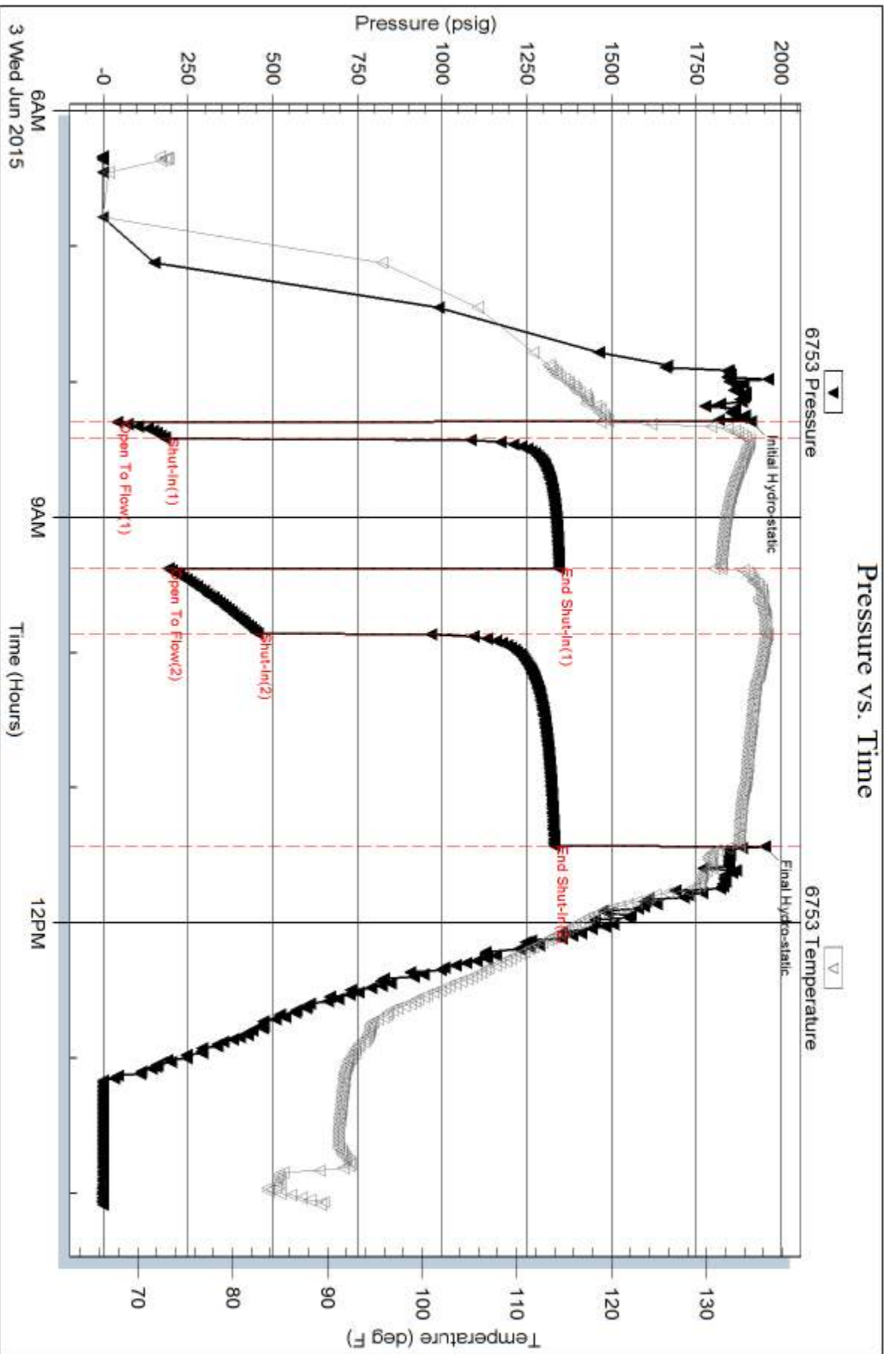
Num Gas Bombs: 0

Serial #:

Laboratory Name:

Laboratory Location:

Recovery Comments:



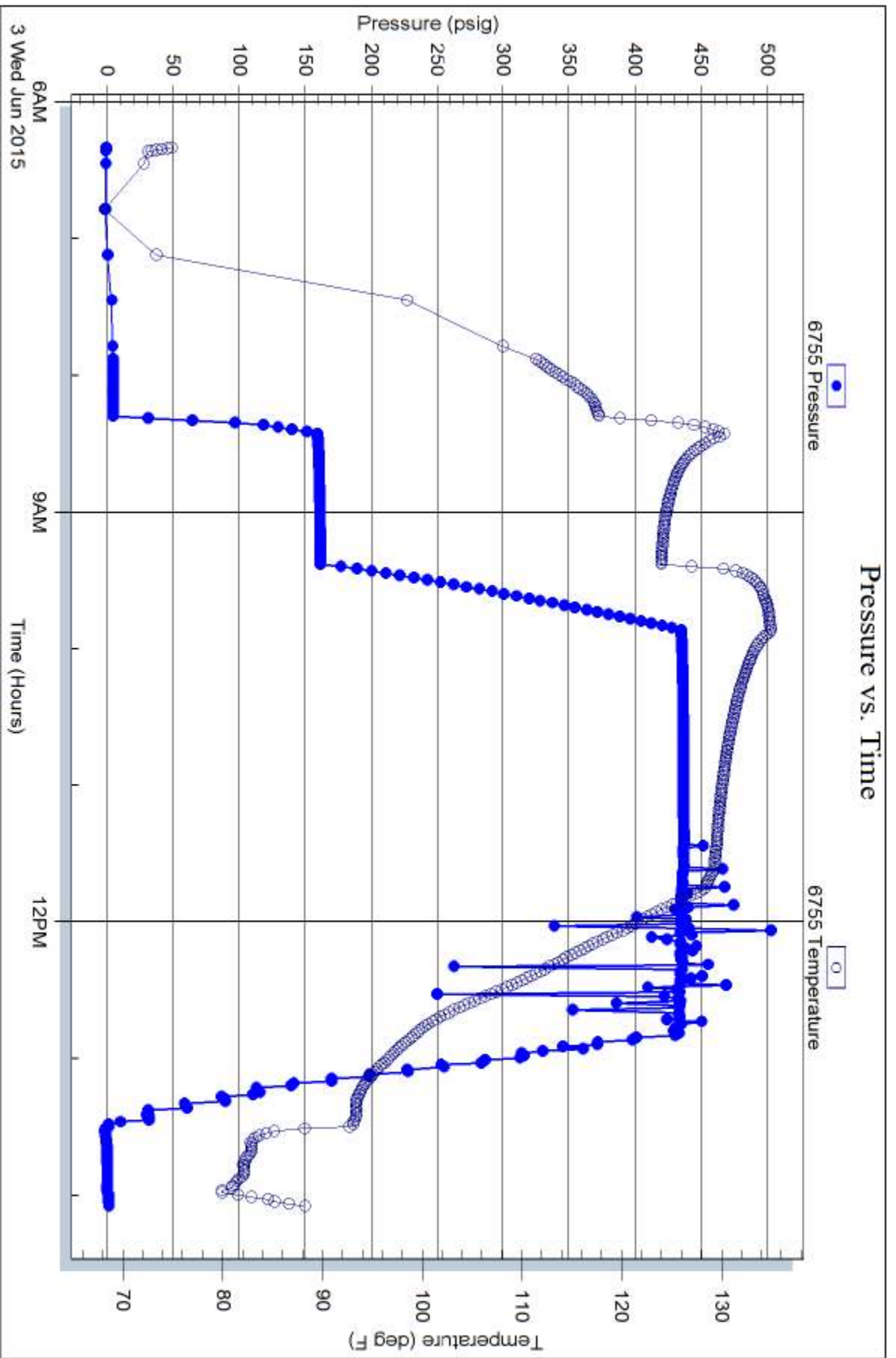
Serial #: 6755

Fluid

Sam Gsry Jr. & Associates

Hoiste Farms #1-30

DST Test Number: 2



Trilobite Testing, Inc

Ref. No: 64976

Printed: 2015.06.04 @ 10:51:57