

# ADVANTAGE ELEVATIONS

OIL FIELD SURVEYORS

BOX 8604 - PRATT, KS 67124  
(620) 672-6491

99151  
INVOICE NO.

VAL ENERGY INC  
OPERATOR

1-29  
NO.

GRAHAM  
FARM

COWLEY COUNTY      29 S      32s T      6e R

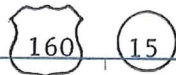
SW SW SW  
LOCATION

ELEVATION: 1304' GR

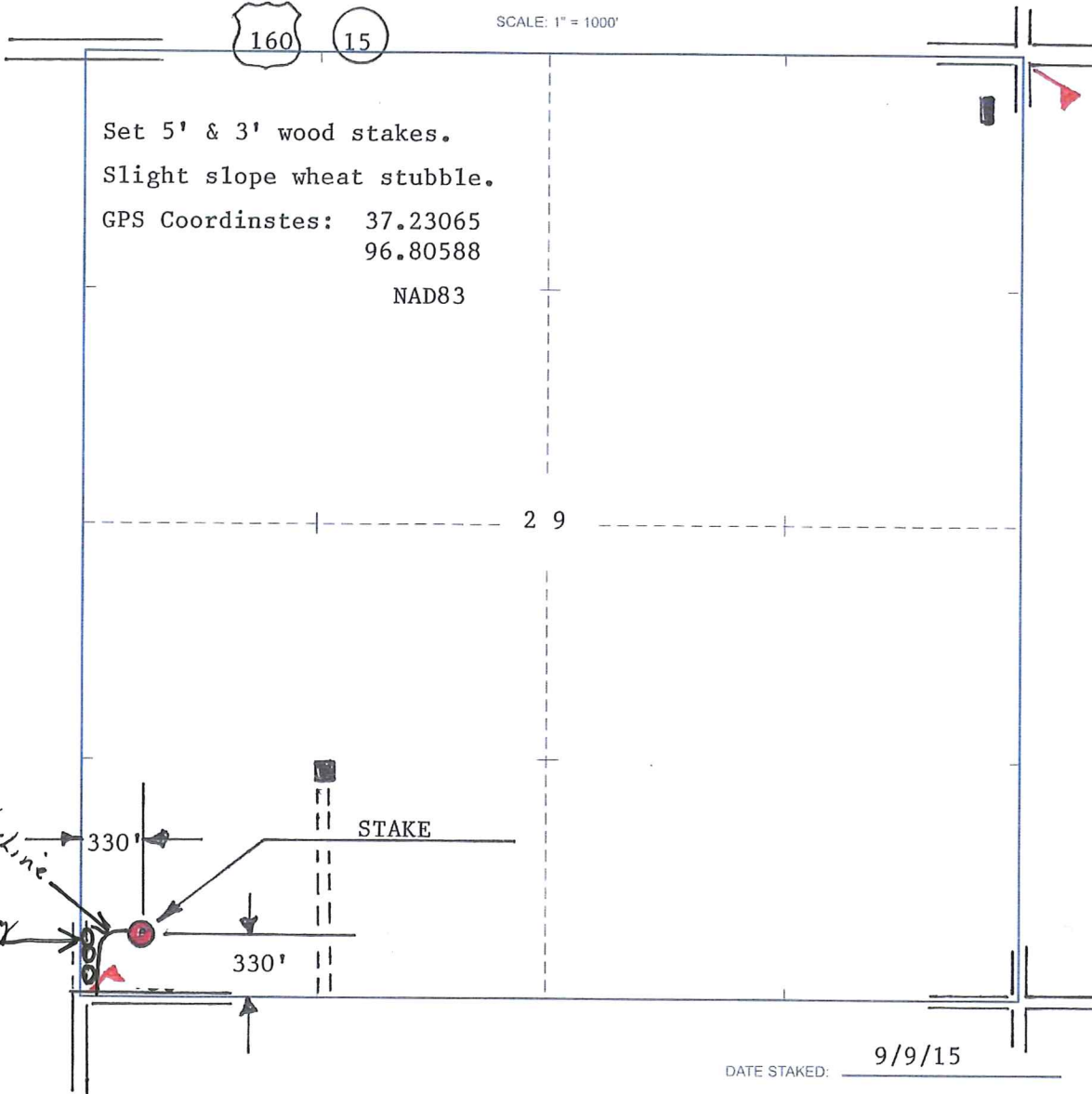


VAL ENERGY INC  
125 N Market Ste 1710  
Wichita, KS 67202

AUTHORIZED BY: Todd Allam



SCALE: 1" = 1000'



DATE STAKED: 9/9/15