

GEOLOGIST'S REPORT
DRILLING TIME AND SAMPLE LOG

COMPANY: **SHAKESPEARE OIL CO.**
 LEASE: **Orkney 3-28**
 FIELD: **Wildcat**
 LOCATION: **1800' FTL, 1900' FWL**
 SEC: **28 T1WSP 14S R0E 32W**
 COUNTY: **Logan STATE Kansas**

CONTRACTOR: **HD Drilling Rig #3**
 SPUD: **8-5-15** COMP: **8-15-15**
 RTD: **4390'** LTD: **4390'**
 MUD UP: **3400'** TYPE MUD: **Chemical**

SAMPLES SAVED FROM: **3400'** to RTD
 DRILLING TIME KEPT FROM: **3400'** to RTD
 SAMPLES EXAMINED FROM: **3400'** to RTD
 GEOLOGICAL SUPERVISION FROM: **3400'** to RTD

GEOLOGIST ON WELL: **Tim Priest**

FORMATION TOPS: **ELECTRIC LOG** SAMPLE
 Anhydrite: **2082 (-580)** 2082 (+580)
 Heebner Shale: **3598 (-935)** 3597 (+935)
 Lansing: **3636 (-974)** 3636 (+974)
 SARC: **3895 (-1233)** 3895 (+1233)
 BRC: **3970 (-1308)** 3972 (-1310)
 Fort Scott: **4156 (-1494)** 4156 (+1494)
 Cherokee Shale: **4184 (-1522)** 4184 (+1522)
 Mississippi: **4295 (-1633)** 4294 (-1632)

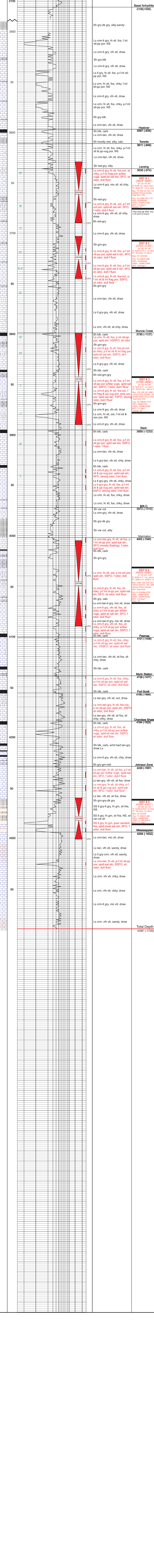
CONDUCTION: **N/A**
 CASING: **8-5/8" @ 264'**
 SURFACE: **5 1/2" @ 4390'**
 PRODUCTION: **CND/DS/P.P.E.**

By: **Weatherford**

REMARKS: Due to the results of DSTs, it was decided to set production casing to further test the well.

Respectfully Submitted,
 Tim Priest
 Petroleum Geologist

API #15-109-21393-00-00



DEPTH: 4390' (Total Depth)
 4294' (-1632)