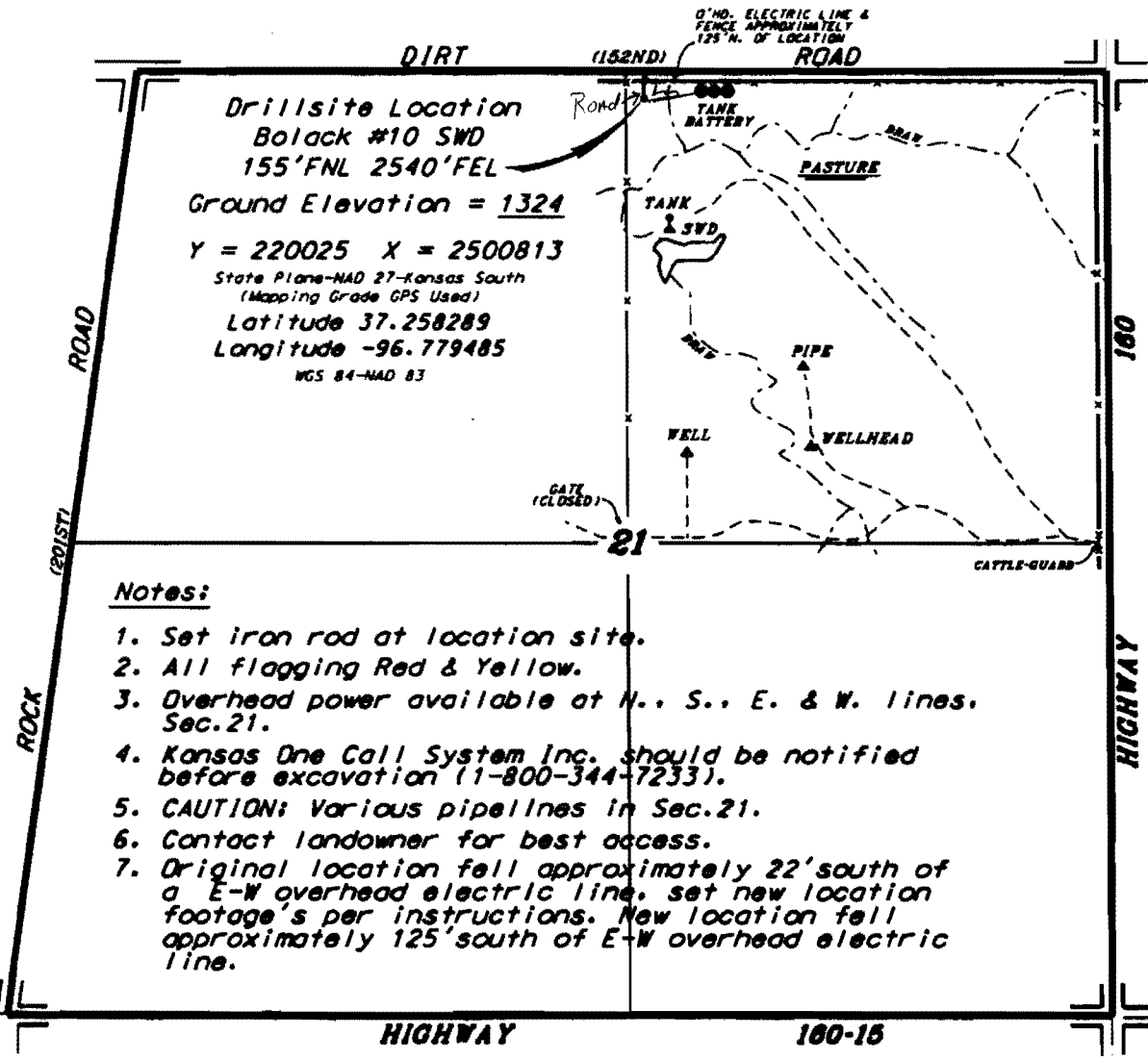


NOVY OIL & GAS, INC.
 BOLACK LEASE
 NE. 1/4, SECTION 21, T32S, R6E
 COWLEY COUNTY, KANSAS

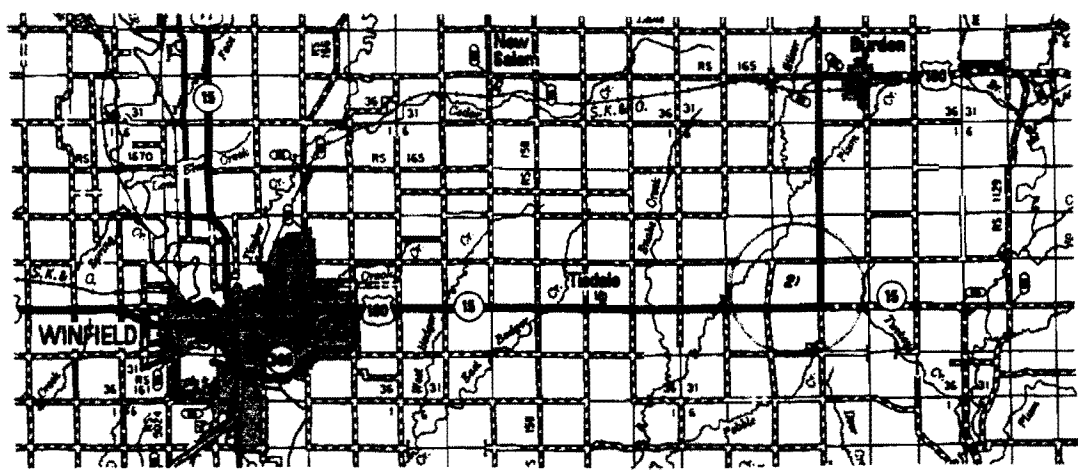


Drillsite Location
 Bolack #10 SWD
 155'FNL 2540'FEL
 Ground Elevation = 1324
 Y = 220025 X = 2500813
 State Plane-NAD 27-Kansas South
 (Mapping Grade GPS Used)
 Latitude 37.250289
 Longitude -96.779485
 WGS 84-NAD 83

Notes:

1. Set iron rod at location site.
2. All flagging Red & Yellow.
3. Overhead power available at N., S., E. & W. lines, Sec. 21.
4. Kansas One Call System Inc. should be notified before excavation (1-800-344-7233).
5. CAUTION: Various pipelines in Sec. 21.
6. Contact landowner for best access.
7. Original location fell approximately 22' south of a E-W overhead electric line, set new location footage's per instructions. New location fell approximately 125' south of E-W overhead electric line.

ingress and egress to location as shown on this plat is for usage only and may not be legally opened for public use. Contact landowner, tenant and county road department for access.



* Controlling data is based upon the best maps and photographs available to us and upon a regular section of land containing 640 acres.
 * Approximate section lines were determined using the normal standard of care of oilfield surveyors practicing in the state of Kansas. The section corners, which establish the precise section lines, were not necessarily located, and the exact location of the drillsite location in the section is not guaranteed. Therefore, the operator securing this service and accepting this plat and all other parties relying thereon agree to hold Central Kansas Oilfield Services, Inc., its officers and employees harmless from all losses, costs and expenses and said entities released from any liability from incidental or consequential damages.
 * Elevations derived from National Geodetic Vertical Datum.

Date September 16, 2015

CENTRAL KANSAS OILFIELD SERVICES, INC. (620)792-1977