

# DIAMOND TESTING GENERAL REPORT

**Jake Fahrenbruch, Tester**

Cell: (620) 282-8977 / Office: (800) 542-7313



## TEST INFORMATION

<b>Well Name</b>	Powell #9-22
<b>Company Name</b>	Berexco LLC
<b>Formation</b>	Upper Marmaton 4780'-4800'
<b>Test Type</b>	Bottom-Hole w/J,Jnt,ShPkr X2
<b>Surface Location</b>	Sec 22-29s-33w-Haskell Co.-KS
<b>KB Elevation (SL)</b>	2954.000
<b>Gauge Name</b>	5951
<b>Start Test Date</b>	2015/07/12
<b>Start Test Time</b>	20:32:00
<b>Final Test Date</b>	2015/07/13
<b>Final Test Time</b>	07:16:00
<b>Job Number</b>	F396
<b>Contact</b>	Evan Mayhew
<b>Site Contact</b>	Ed Grieves

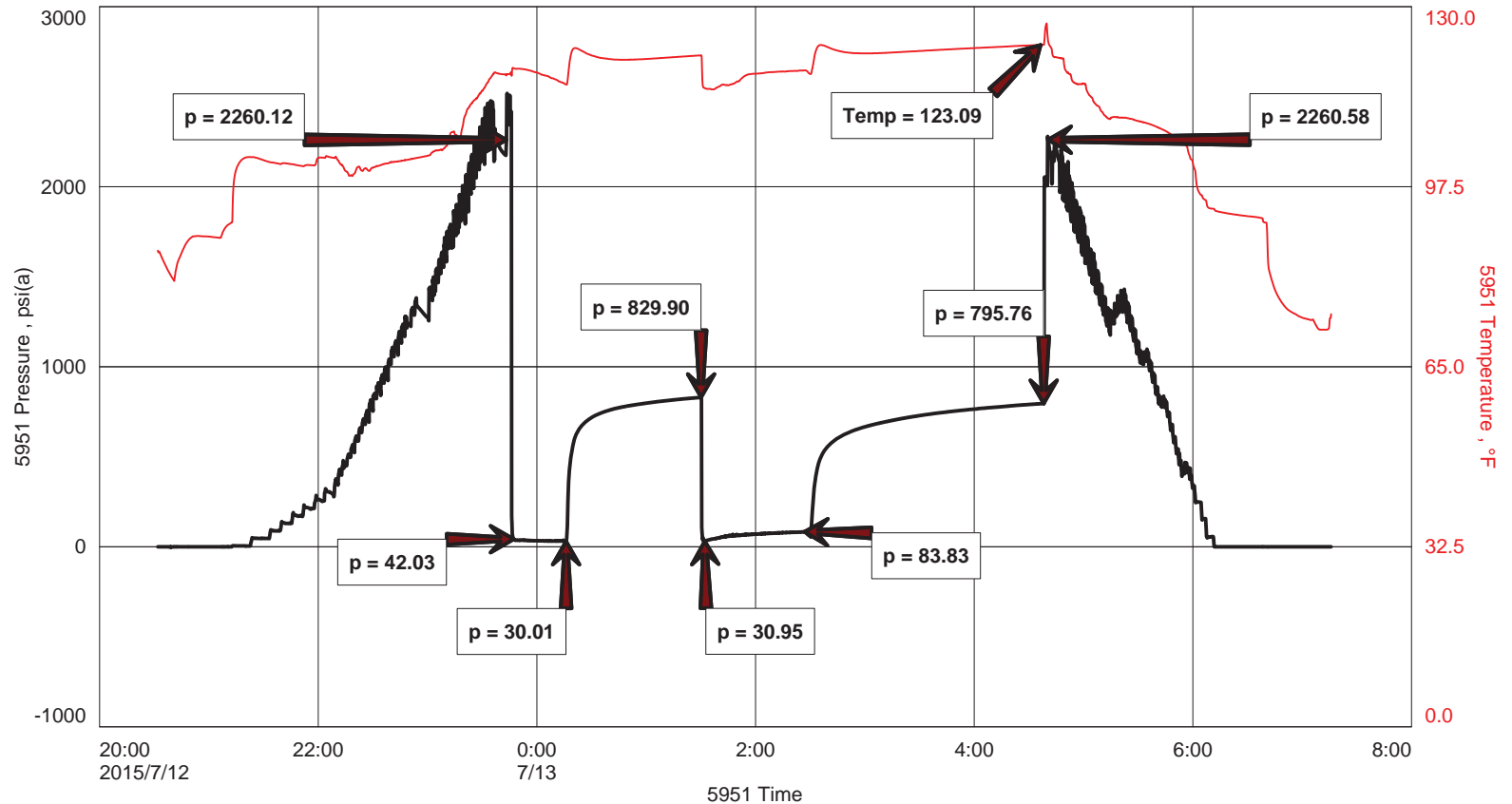
## TEST RESULTS

Initial flow, BOB 15 seconds, GTS 8.5 minutes. No blowback.  
 Final flow, BOB 10 seconds, Guage gas. No blowback.

Recovered:

30'	GCM	15% gas, 85% mud
30'	GCO	10% gas, 90% oil
-----		37 gravity @ 60 F

## Powell #9-22





DIAMOND TESTING

P.O. Box 157  
HOISINGTON, KANSAS 67544  
(800) 542-7313

DRILL-STEM TEST TICKET  
FILE: POWELL 90515

ON LOCATION: 19:45  
START RECORDERS: 20:32  
STOP RECORDERS: 07:16

Company BEREXCO LLC Lease & Well No. POWELL #9-22  
Contractor BEREXCO LLC REG #1 Charge to BEREXCO LLC  
Elevation 2954' NB Formation UPPER MARM. Effective Pay \_\_\_\_\_ Ft. Ticket No. F 396  
Date 7-12-15 Sec. 22 Twp. 29S Range 33W County HASKELL State KANSAS  
Test Approved By ED GRIEVES Diamond Representative JAKE FAHRENBRUCH

Formation Test No. 5 Interval Tested from 4780 ft. to 4800 ft. Total Depth 4800 ft.  
Packer Depth 4775 ft. Size 6 3/4 in. Packer depth \_\_\_\_\_ ft. Size 6 3/4 in.  
Packer Depth 4780 ft. Size 6 3/4 in. Packer depth \_\_\_\_\_ ft. Size 6 3/4 in.  
Depth of Selective Zone Set \_\_\_\_\_

Top Recorder Depth (Inside) 4763 ft. Recorder Number 5951 Cap. 5000 P.S.I.  
Bottom Recorder Depth (Outside) 4781 ft. Recorder Number 5584 Cap. 5000 P.S.I.  
Below Straddle Recorder Depth \_\_\_\_\_ ft. Recorder Number \_\_\_\_\_ Cap. \_\_\_\_\_ P.S.I.

Mud Type CHEMICAL Viscosity 63 (2" LCM) Drill Collar Length 616 ft. I.D. 2 1/4 in.  
Weight 9.2 Water Loss 10.8 cc. Weight Pipe Length \_\_\_\_\_ ft. I.D. 2 7/8 in.  
Chlorides 5100 P.P.M. Drill Pipe Length 4131 ft. I.D. 3 1/2 in.  
Jars: Make STERLING Serial Number #5 J, J, 56 Pk x 2 Test Tool Length 33 ft. Tool Size 3 1/2-IF in.  
Did Well Flow? GTS Reversed Out \_\_\_\_\_ Anchor Length 20 ft. Size 4 1/2-FH in.  
Main Hole Size 7 7/8 Tool Joint Size 4 1/2" X 4" in. Surface Choke Size 1 in. Bottom Choke Size 5/8 in.

Blow: 1st Open: BOB 15 SECONDS. GTS 8 1/2 MINUTES. NO BLOWBACK.  
2nd Open: BOB 10 SECONDS. GAUGE GAS (1/8" CHOKE). NO BLOWBACK.

Recovered 30 ft. of GCM 15" GAS, 85" MUD  
Recovered 30 ft. of GCO 10" GAS, 90" OIL  
Recovered \_\_\_\_\_ ft. of GRAVITY: 37 @ 60°F  
Recovered \_\_\_\_\_ ft. of \_\_\_\_\_  
Recovered \_\_\_\_\_ ft. of \_\_\_\_\_  
Recovered \_\_\_\_\_ ft. of \_\_\_\_\_  
Remarks: \_\_\_\_\_  

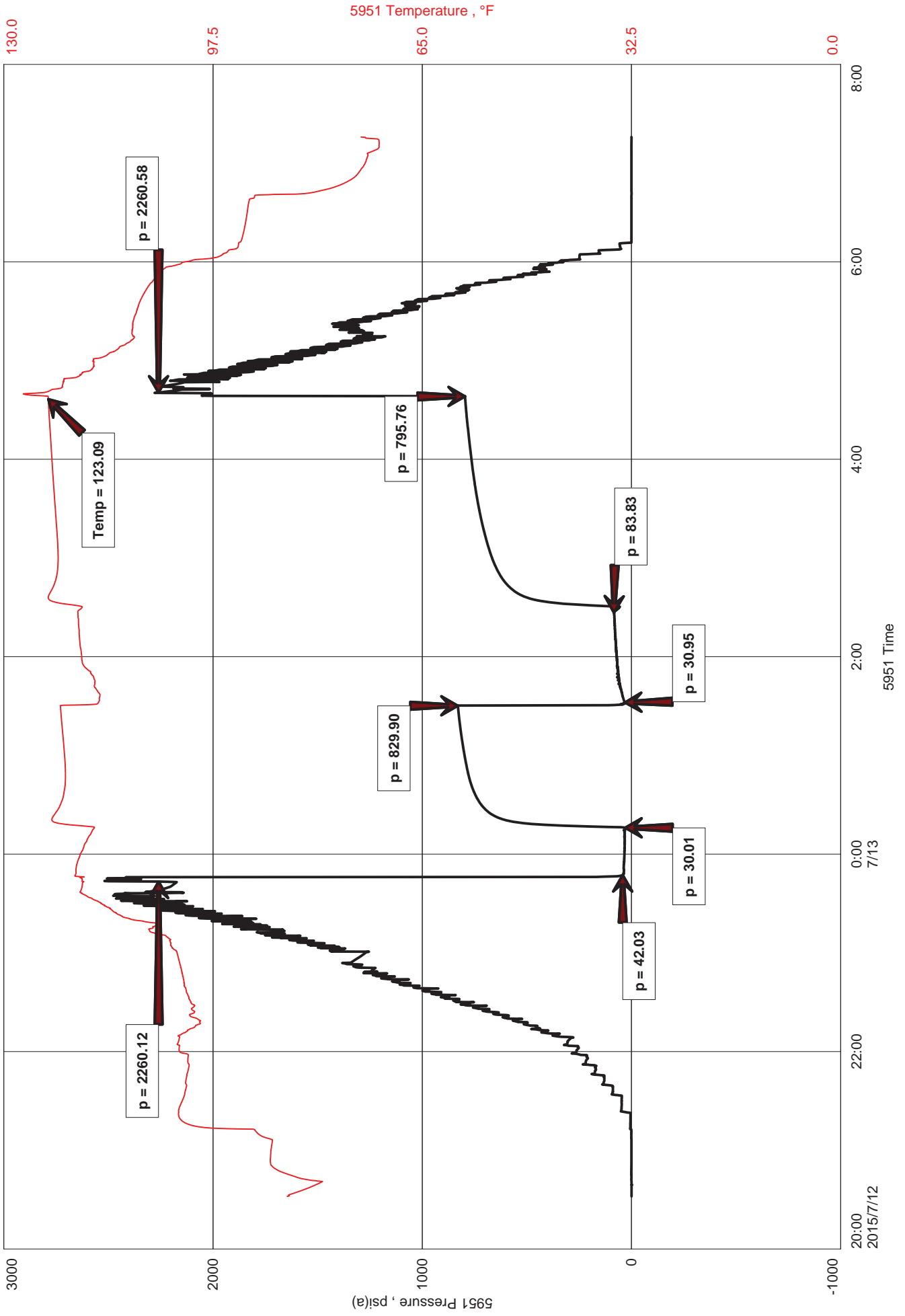
(1/2 HR STND BY)
Price Job
Other Charges <u>J, J</u>
<u>56 Pk x 2</u>
<u>78 MRT (GC)</u>
Total

Time Set Packer(s) 23:58 A.M. P.M. Time Started Off Bottom 04:28 A.M. P.M. Maximum Temperature 123°F

Initial Hydrostatic Pressure..... (A) 2260 P.S.I.  
Initial Flow Period..... Minutes 30 (B) 42 P.S.I. to (C) 30 P.S.I.  
Initial Closed In Period..... Minutes 60 (D) 830 P.S.I.  
Final Flow Period..... Minutes 60 (E) 31 P.S.I. to (F) 84 P.S.I.  
Final Closed In Period..... Minutes 120 (G) 796 P.S.I. Thank you  
Final Hydrostatic Pressure..... (H) 2261 P.S.I. per J, J

Diamond Testing shall not be liable for damages of any kind to the property or personnel of the one for whom a test is made or for any loss suffered or sustained, directly or indirectly, through the use of its equipment, or its statement or opinion concerning the result of any test. Tools lost or damaged in the hole shall be paid for at cost by the party for whom the test is made.

# Powell #9-22





# DIAMOND TESTING



# GAS RATE TICKET

**Lease:** Powell #9-22  
**Operator:** Berexco LLC  
**Formation:** Upper Marmaton 4780'-4800' (DST #5)  
**Field:**  
**Location:** Sec. 22 Twp. 29s Rge. 33w  
**County:** Haskell **State:** Kansas

Initial flow, BOB 15 seconds, GTS 8.5 minutes. No blowback.  
Final flow, BOB 10 seconds. No blowback.

\*\*\* Gas sample taken.

Final flow period.

*** 10 min	-----	.125" choke	-----	20psi	-----	14,600cf/d
20 min	-----	.125" choke	-----	28psi	-----	18,200cf/d
30 min	-----	.125" choke	-----	35psi	-----	21,200cf/d
40 min	-----	.125" choke	-----	37psi	-----	22,100cf/d
50 min	-----	.125" choke	-----	37.5psi	-----	22,300cf/d
60 min	-----	.125" choke	-----	38psi	-----	22,500cf/d



**DIAMOND TESTING**  
P.O. Box 157  
**HOISINGTON, KANSAS 67544**  
(800) 542-7313  
**DRILL-STEM TEST TICKET**  
FILE: POWELL9DST5

TIME ON: 20:32 7-12-15  
TIME OFF: 07:16 7-13-15

Company BEREXCO LLC Lease & Well No. POWELL #9-22  
Contractor BEREDCO LLC RIG #1 Charge to BEREXCO LLC  
Elevation 2954' KB Formation Upper Marmaton Effective Pay \_\_\_\_\_ Ft. Ticket No. F396  
Date 7-12-15 Sec. 22 Twp. 29S S Range 33W W County HASKELL State KANSAS  
Test Approved By ED GRIEVES Diamond Representative JAKE FAHRENBRUCH

Formation Test No. 5 Interval Tested from 4780 ft. to 4800 ft. Total Depth 4800 ft.  
Packer Depth 4775 ft. Size 6 3/4 in. Packer depth ----- ft. Size 6 3/4 in.  
Packer Depth 4780 ft. Size 6 3/4 in. Packer depth ----- ft. Size 6 3/4 in.  
Depth of Selective Zone Set -----

Top Recorder Depth (Inside) 4763 ft. Recorder Number 5951 Cap. 5000 P.S.I.  
Bottom Recorder Depth (Outside) 4781 ft. Recorder Number 5584 Cap. 5000 P.S.I.  
Below Straddle Recorder Depth \_\_\_\_\_ ft. Recorder Number \_\_\_\_\_ Cap. \_\_\_\_\_ P.S.I.

Mud Type CHEMICAL Viscosity 63 (2# LCM) Drill Collar Length 616 ft. I.D. 2 1/4 in.  
Weight 9.2 Water Loss 10.8 cc. Weight Pipe Length 0 ft. I.D. 2 7/8 in.  
Chlorides 5,100 P.P.M. Drill Pipe Length 4,131 ft. I.D. 3 1/2 in.  
Jars: Make STERLING Serial Number #5 J,J,ShPkrX2 Test Tool Length 33 ft. Tool Size 3 1/2-IF in.  
Did Well Flow? GTS Reversed Out NO Anchor Length 20 ft. Size 4 1/2-FH in.  
Main Hole Size 7 7/8 Tool Joint Size 4 1/2 XH in. Surface Choke Size 1 in. Bottom Choke Size 5/8 in.

Blow: 1st Open: BOB 15 seconds, GTS 8.5 minutes. No blowback.  
2nd Open: BOB 10 seconds, Guage gas. No blowback.

Recovered 30 ft. of GCM 15% gas, 85% mud  
Recovered 30 ft. of GCO 10% gas, 90% oil  
Recovered \_\_\_\_\_ ft. of 37 gravity @ 60 F

Recovered _____ ft. of _____	Price Job
Recovered _____ ft. of _____	Other Charges
Recovered _____ ft. of _____	Insurance
Remarks: _____	Total

Time Set Packer(s) 23:58 A.M. P.M. Time Started Off Bottom 04:28 A.M. P.M. Maximum Temperature 123 F

Initial Hydrostatic Pressure..... (A) 2260 P.S.I.  
Initial Flow Period..... Minutes 30 (B) 42 P.S.I. to (C) 30 P.S.I.  
Initial Closed In Period..... Minutes 60 (D) 830 P.S.I.  
Final Flow Period..... Minutes 60 (E) 31 P.S.I. to (F) 84 P.S.I.  
Final Closed In Period..... Minutes 120 (G) 796 P.S.I.  
Final Hydrostatic Pressure..... (H) 2261 P.S.I.

Diamond Testing shall not be liable for damages of any kind to the property or personnel of the one for whom a test is made or for any loss suffered or sustained, directly or indirectly, through the use of its equipment, or its statement or opinion concerning the result of any test. Tools lost or damaged in the hole shall be paid for at cost by the party for whom the test is made.