

DIAMOND TESTING GENERAL REPORT

Jake Fahrenbruch, Tester

Cell: (620) 282-8977 / Office: (800) 542-7313



TEST INFORMATION

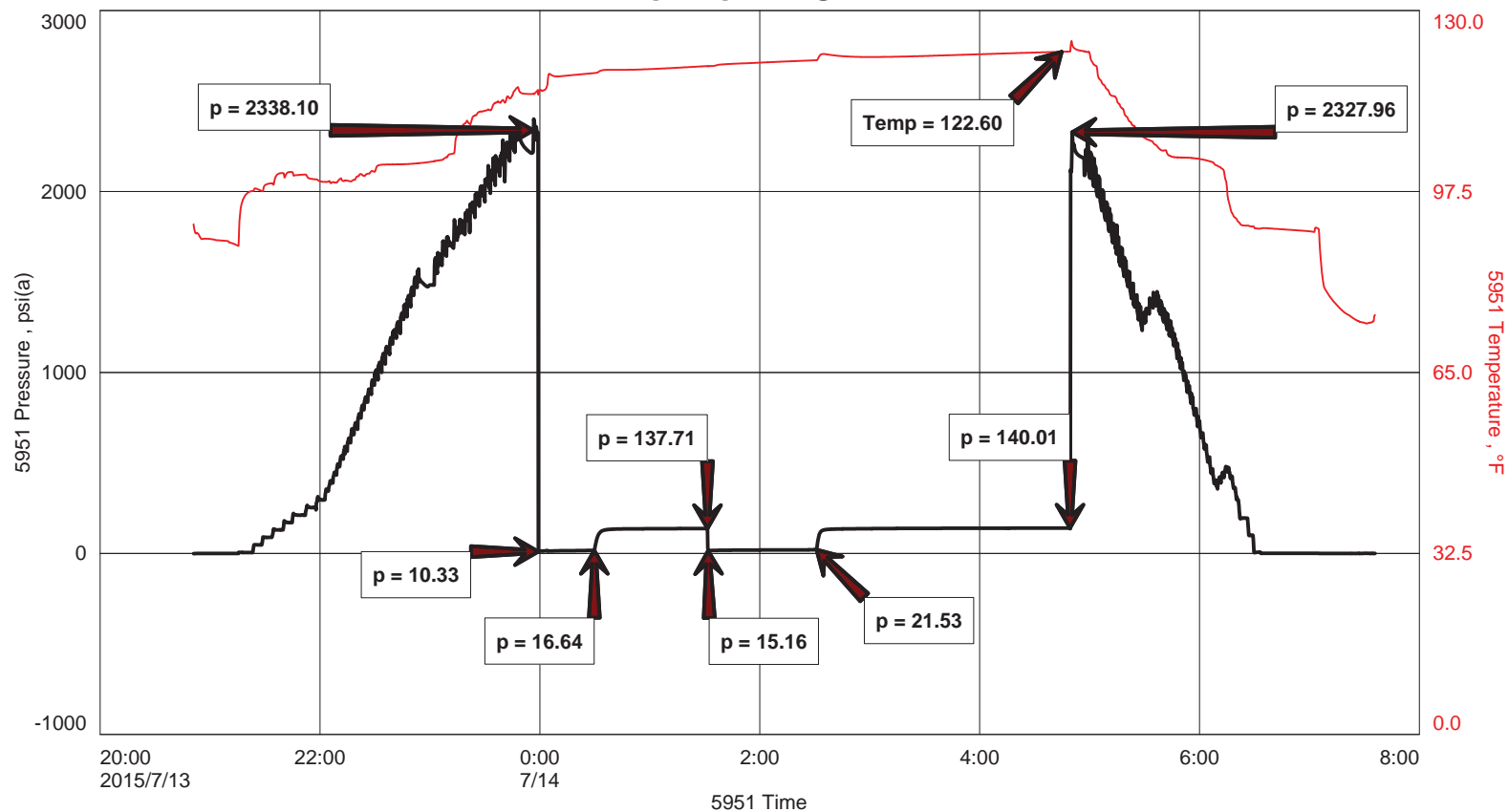
Well Name	Powell #9-22
Company Name	Berexco LLC
Formation	Lower Marmaton 4804'-4821'
Test Type	Bottom-Hole w/J,Jnt,ShPkr X 2
Surface Location	Sec 22-29s-33w-Haskell Co.-KS
KB Elevation (SL)	2954.000
Gauge Name	5951
Start Test Date	2015/07/13
Start Test Time	20:51:00
Final Test Date	2015/07/14
Final Test Time	07:37:00
Job Number	F397
Contact	Evan Mayhew
Site Contact	Ed Grieves

TEST RESULTS

Initial flow period, strong blow at BOB in 16 minutes. No blowback.
Final flow period, strong blow at BOB in 3 minutes. No blowback.

Recovered 30' of DRLG MUD
2700' Gas In Pipe

Powell #9-22





DIAMOND TESTING
 P.O. Box 157
 HOISINGTON, KANSAS 67544
 (800) 542-7313
DRILL-STEM TEST TICKET
 FILE: POWELL 9D5TG

ON LOCATION:	<u>20:35</u>
START RECORDERS:	<u>20:51</u>
STOP RECORDERS:	<u>07:37</u>

Company BEREXCO LLC Lease & Well No. POWELL #9-22
 Contractor BEREXCO LLC REG #1 Charge to BEREXCO LLC
 Elevation 2954' NB Formation LOWER NARM. Effective Pay --- Ft. Ticket No. F397
 Date 7-14-15 Sec. 22 Twp. 29S Range 33W County HASKELL State KANSAS
 Test Approved By ED GRIEVES Diamond Representative JAKE FAHRENBRUCH

Formation Test No. 6 Interval Tested from 4804 ft. to 4821 ft. Total Depth 4821 ft.
 Packer Depth 4799 ft. Size 6 3/4 in. Packer depth --- ft. Size 6 3/4 in.
 Packer Depth 4804 ft. Size 6 3/4 in. Packer depth --- ft. Size 6 3/4 in.
 Depth of Selective Zone Set ---

Top Recorder Depth (Inside) 4788 ft. Recorder Number 5957 Cap. 5000 P.S.I.
 Bottom Recorder Depth (Outside) 4805 ft. Recorder Number 5584 Cap. 5000 P.S.I.
 Below Straddle Recorder Depth --- ft. Recorder Number --- Cap. --- P.S.I.

Mud Type CHEMICAL Viscosity 58 (2" ICM) Drill Collar Length 616 ft. I.D. 2 1/4 in.
 Weight 8.9 Water Loss 9.6 cc. Weight Pipe Length --- ft. I.D. 2 7/8 in.
 Chlorides 5600 P.P.M. Drill Pipe Length 4155 ft. I.D. 3 1/2 in.
 Jars: Make STERLING Serial Number #5 J.J. 54 PK XZ Test Tool Length 33 ft. Tool Size 3 1/2-IF in.
 Did Well Flow? --- Reversed Out --- Anchor Length 17 ft. Size 4 1/2-FH in.
 Main Hole Size 7 7/8 Tool Joint Size 4 1/2" XH in. Surface Choke Size 1 in. Bottom Choke Size 5/8 in.

Blow: 1st Open: STRONG BLOW @ BOB IN 16 MINUTES. NO BLOWBACK.
 2nd Open: STRONG BLOW @ BOB IN 3 MINUTES. NO BLOWBACK.

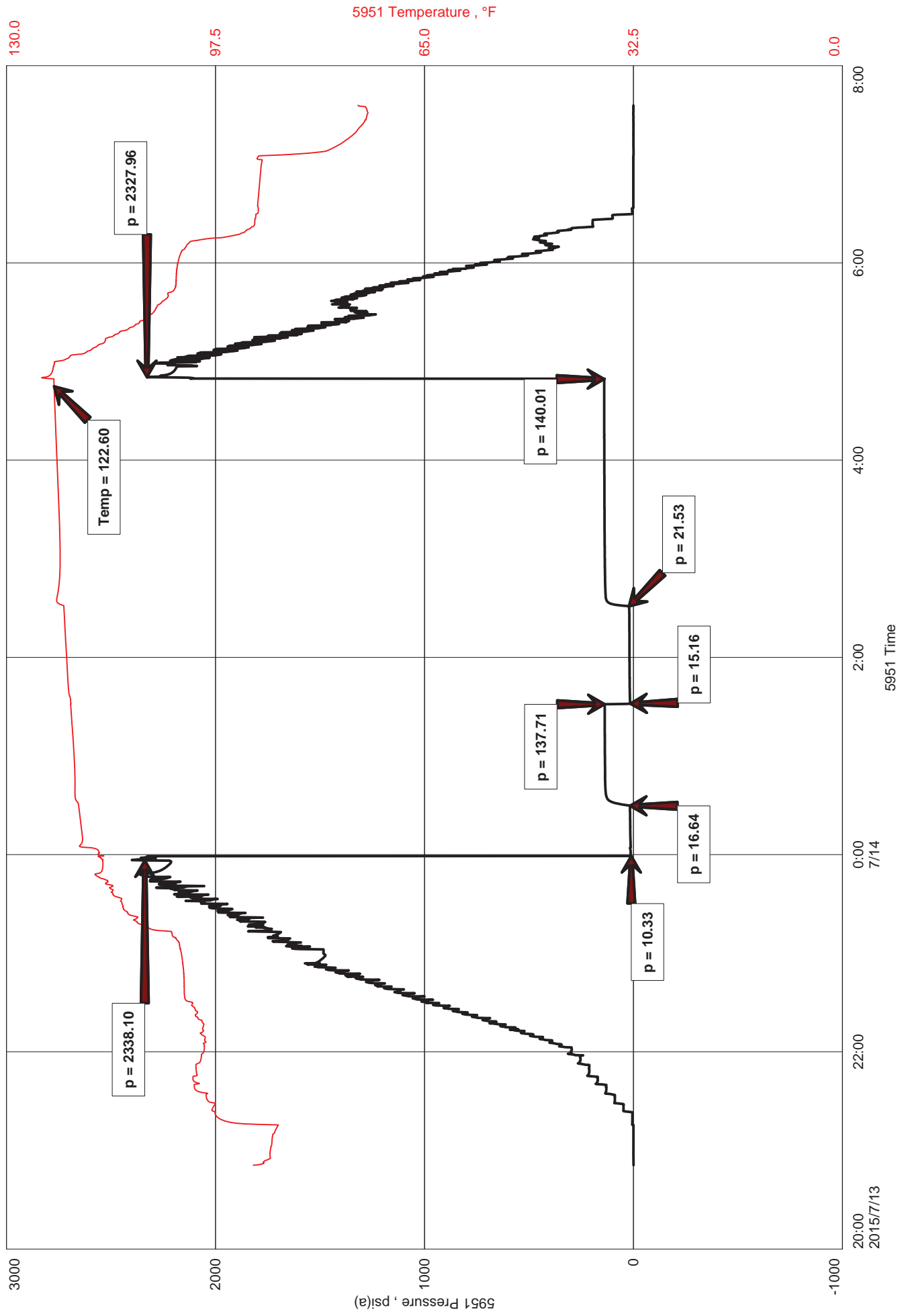
Recovered 30 ft. of DRUG MUD
 Recovered --- ft. of 2700' GAS IN PIPE
 Recovered --- ft. of ---
 Recovered --- ft. of ---
 Recovered --- ft. of ---
 Recovered --- ft. of ---
 Remarks: ---
 (1 HR STANDBY)
 Price Job
 Other Charges J, J
56 PK XZ
78 MRT (GC)
 Total

Time Set Packer(s) 00:02 A.M. P.M. Time Started Off Bottom 04:32 A.M. P.M. Maximum Temperature 123°F

Initial Hydrostatic Pressure..... (A) 2338 P.S.I.
 Initial Flow Period..... Minutes 30 (B) 10 P.S.I. to (C) 17 P.S.I.
 Initial Closed In Period..... Minutes 60 (D) 138 P.S.I.
 Final Flow Period..... Minutes 60 (E) 15 P.S.I. to (F) 22 P.S.I.
 Final Closed In Period..... Minutes 120 (G) 140 P.S.I. Thank you!
 Final Hydrostatic Pressure..... (H) 2328 P.S.I. Jake & Jim

Diamond Testing shall not be liable for damages of any kind to the property or personnel of the one for whom a test is made or for any loss suffered or sustained, directly or indirectly, through the use of its equipment, or its statement or opinion concerning the result of any test. Tools lost or damaged in the hole shall be paid for at cost by the party for whom the test is made.

Powell #9-22





DIAMOND TESTING
P.O. Box 157
HOISINGTON, KANSAS 67544
(800) 542-7313
DRILL-STEM TEST TICKET
FILE: POWELL9DST6

TIME ON: 20:51 7-13-15
TIME OFF: 07:37 7-14-15

Company BEREXCO LLC Lease & Well No. POWELL #9-22
Contractor BEREDCO LLC RIG #1 Charge to BEREXCO LLC
Elevation 2954' KB Formation Lower Marmaton Effective Pay _____ Ft. Ticket No. F397
Date 7-14-15 Sec. 22 Twp. 29S S Range 33W W County HASKELL State KANSAS
Test Approved By ED GRIEVES Diamond Representative JAKE FAHRENBRUCH

Formation Test No. 6 Interval Tested from 4804 ft. to 4821 ft. Total Depth 4821 ft.
Packer Depth 4799 ft. Size 6 3/4 in. Packer depth ----- ft. Size 6 3/4 in.
Packer Depth 4804 ft. Size 6 3/4 in. Packer depth ----- ft. Size 6 3/4 in.
Depth of Selective Zone Set -----

Top Recorder Depth (Inside) 4788 ft. Recorder Number 5951 Cap. 5000 P.S.I.
Bottom Recorder Depth (Outside) 4805 ft. Recorder Number 5584 Cap. 5000 P.S.I.
Below Straddle Recorder Depth ----- ft. Recorder Number ----- Cap. ----- P.S.I.

Mud Type CHEMICAL Viscosity 58 (2# LCM) Drill Collar Length 616 ft. I.D. 2 1/4 in.
Weight 8.9 Water Loss 9.6 cc. Weight Pipe Length 0 ft. I.D. 2 7/8 in.
Chlorides 5,600 P.P.M. Drill Pipe Length 4,155 ft. I.D. 3 1/2 in.
Jars: Make STERLING Serial Number #5 J,J,ShPkrX2 Test Tool Length 33 ft. Tool Size 3 1/2-IF in.
Did Well Flow? NO Reversed Out NO Anchor Length 17 ft. Size 4 1/2-FH in.
Main Hole Size 7 7/8 Tool Joint Size 4 1/2 XH in. Surface Choke Size 1 in. Bottom Choke Size 5/8 in.

Blow: 1st Open: Strong blow at BOB in 16 minutes. No blowback.
2nd Open: Strong blow at BOB in 3 minutes. No blowback.

Recovered 30 ft. of DRLG MUD
Recovered _____ ft. of 2700' GAS IN PIPE
Recovered _____ ft. of _____
Recovered _____ ft. of _____
Recovered _____ ft. of _____
Recovered _____ ft. of _____
Remarks: _____

	Price Job
	Other Charges
	Insurance
	Total

Time Set Packer(s) 00:02 A.M. P.M. Time Started Off Bottom 04:32 A.M. P.M. Maximum Temperature 123 F
Initial Hydrostatic Pressure..... (A) 2338 P.S.I.
Initial Flow Period..... Minutes 30 (B) 10 P.S.I. to (C) 17 P.S.I.
Initial Closed In Period..... Minutes 60 (D) 138 P.S.I.
Final Flow Period..... Minutes 60 (E) 15 P.S.I. to (F) 22 P.S.I.
Final Closed In Period..... Minutes 120 (G) 140 P.S.I.
Final Hydrostatic Pressure..... (H) 2328 P.S.I.

Diamond Testing shall not be liable for damages of any kind to the property or personnel of the one for whom a test is made or for any loss suffered or sustained, directly or indirectly, through the use of its equipment, or its statement or opinion concerning the result of any test. Tools lost or damaged in the hole shall be paid for at cost by the party for whom the test is made.