

DIAMOND TESTING GENERAL REPORT

Jake Fahrenbruch, Tester

Cell: (620) 282-8977 / Office: (800) 542-7313



TEST INFORMATION

Well Name	Powell #9-22
Company Name	Berexco LLC
Formation	Atoka 5054'-5104'
Test Type	Bottom-Hole w/J,Jnt,ShPkr X 2
Surface Location	Sec 22-29s-33w-Haskell Co.-KS
KB Elevation (SL)	2954.000
Gauge Name	5951
Start Test Date	2015/07/16
Start Test Time	22:30:00
Final Test Date	2015/07/17
Final Test Time	09:21:00
Job Number	F399
Contact	Evan Mayhew
Site Contact	Ed Grieves

TEST RESULTS

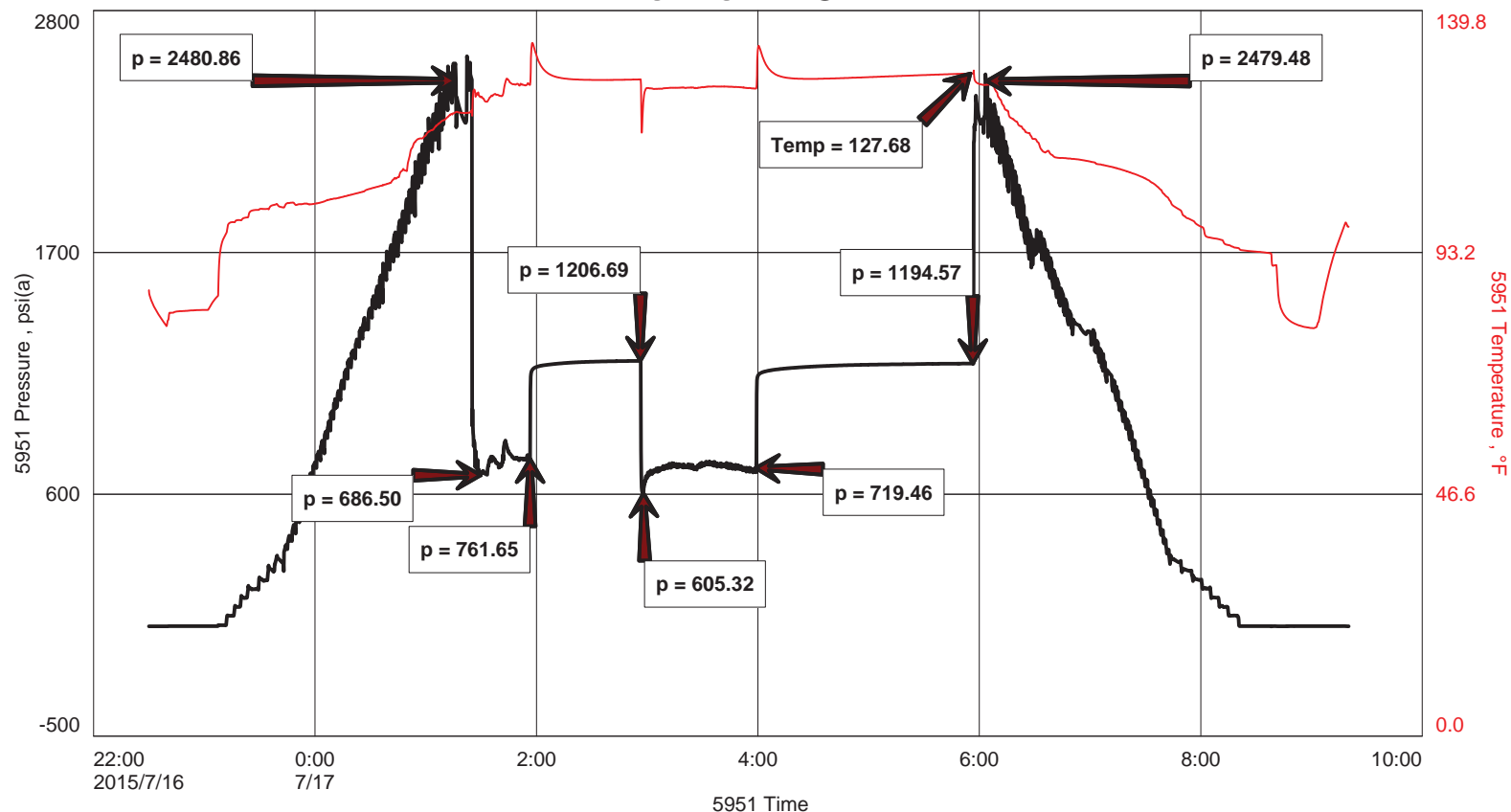
Initial flow, very strong blow, BOB 15 seconds, GTS 3 minutes. Blowback increased to 10".
 Final flow, guage gas, fogging mud in 5 minutes, mud changed to water at end of flow period. Recovered a sample at the end of the flow period. Blowback increased to 10".

Flowing sample: MCW w/tr Oil, >1% oil, <89% wtr, 10% mud (chlorides = 108,000 ppm, PH: 7.5, RW:.075ohm@70F)

TOTAL FLUID RECOVERED: 650'

20'	Watery Oil	65% oil, 35% wtr
180'	SOCW	5% oil, 95% wtr
450'	Water	100% wtr

Powell #9-22





DIAMOND TESTING
 P.O. Box 157
 HOISINGTON, KANSAS 67544
 (800) 542-7313
DRILL-STEM TEST TICKET
 FILE: POWELL9DST8

ON LOCATION:	<u>21:51</u>
START RECORDERS:	<u>22:30</u>
STOP RECORDERS:	<u>09:21</u>

Company BEREXCO LLC Lease & Well No. POWELL #9-22
 Contractor BEREXCO LLC RIG #1 Charge to BEREXCO LLC
 Elevation 2954' KB Formation ATOKA Effective Pay Ft. Ticket No. F399
 Date 7-17-15 Sec. 22 Twp. 29S Range 33W County HASKELL State KANSAS
 Test Approved By ED CATEVES Diamond Representative JAKE FAHRENBRUCH

Formation Test No. 8 Interval Tested from 5054 ft. to 5104 ft. Total Depth 5104 ft.
 Packer Depth 5049 ft. Size 6 3/4 in. Packer depth ft. Size 6 3/4 in.
 Packer Depth 5054 ft. Size 6 3/4 in. Packer depth ft. Size 6 3/4 in.
 Depth of Selective Zone Set

Top Recorder Depth (Inside) 5037 ft. Recorder Number 5951 Cap. 5000 P.S.I.
 Bottom Recorder Depth (Outside) 5060 ft. Recorder Number 5584 Cap. 5000 P.S.I.
 Below Straddle Recorder Depth ft. Recorder Number Cap. P.S.I.
 Mud Type CHEMICAL Viscosity 60+ (4*LCM) Drill Collar Length 616 ft. I.D. 2 1/4 in.
 Weight 9.1 Water Loss 10.8 cc. Weight Pipe Length ft. I.D. 2 7/8 in.
 Chlorides 4800 P.P.M. Drill Pipe Length 4405 ft. I.D. 3 1/2 in.
 Jars: Make STERLING Serial Number #5J, JMT, SHPKR X2 Test Tool Length 33 ft. Tool Size 3 1/2-IF in.
 Did Well Flow? GTS Reversed Out Anchor Length 50 ft. Size 4 1/2-FH in.
 Main Hole Size 7 7/8 Tool Joint Size 4 1/2" XH in. 178 PERF IN ANCHOR Surface Choke Size 1 in. Bottom Choke Size 5/8 in.

Blow: 1st Open: VERY STRONG BLOW. BOB 15 SEC. GTS 3 MIN. BLOWBACK @ 10"
 2nd Open: GUAGE GAS, FOG MUD @ 5 MIN, MUD CHANGED TO WATER @ END OF FLOW, RECOVERED SAMPLE. BLOWBACKED

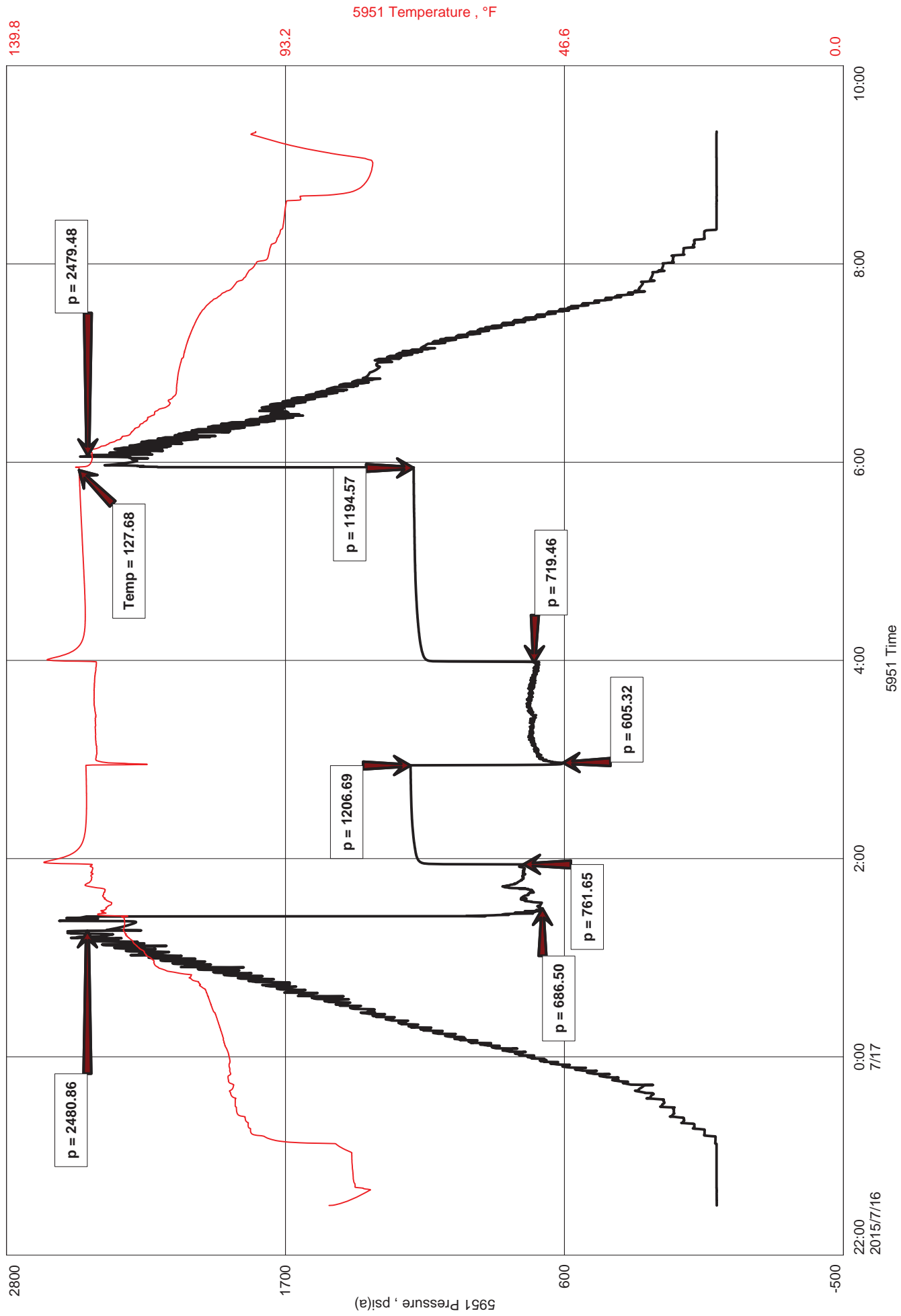
Recovered <u> </u> ft. of <u>FLOWING SAMPLE: MCW W/TR OIL</u>	<u>< 1" OIL, 78% WTR, 10% MUD</u>	
Recovered <u>20</u> ft. of <u>WTRY OIL</u>	<u>65" OIL, 35% WTR</u>	
Recovered <u>180</u> ft. of <u>SUCW</u>	<u>5" OIL, 95% WTR</u>	
Recovered <u>450</u> ft. of <u>WATER</u>	<u>100% WTR</u>	<u>(1/2 HR STAND BY)</u>
Recovered <u> </u> ft. of <u> </u>	<u>RW: .075 @ 70°F</u>	Price Job
Recovered <u> </u> ft. of <u> </u>	<u>PH: 7.5</u>	Other Charges <u>J, JMT</u>
Remarks: <u>TOTAL FLUID RECOVERED: 650'</u>		<u>SH PKR X2</u>
		<u>78 MRT (GC)</u>
		Total

CHLORIDES: 108,000 PPM

Time Set Packer(s) 01:27 A.M. P.M. Time Started Off Bottom 05:57 A.M. P.M. Maximum Temperature 128°F
 Initial Hydrostatic Pressure..... (A) 2481 P.S.I.
 Initial Flow Period..... Minutes 30 (B) 687 P.S.I. to (C) 762 P.S.I.
 Initial Closed In Period..... Minutes 60 (D) 1207 P.S.I.
 Final Flow Period..... Minutes 60 (E) 605 P.S.I. to (F) 719 P.S.I.
 Final Closed In Period..... Minutes 120 (G) 1195 P.S.I. Thank you!
 Final Hydrostatic Pressure..... (H) 2479 P.S.I.

Diamond Testing shall not be liable for damages of any kind to the property or personnel of the one for whom a test is made or for any loss suffered or sustained, directly or indirectly, through the use of its equipment, or its statement or opinion concerning the result of any test. Tools lost or damaged in the hole shall be paid for at cost by the party for whom the test is made.

Powell #9-22





DIAMOND TESTING
P.O. Box 157
HOISINGTON, KANSAS 67544
(800) 542-7313
DRILL-STEM TEST TICKET
FILE: POWELL9DST8

TIME ON: 22:30 7-16-15
TIME OFF: 09:21 7-17-15

Company BEREXCO LLC Lease & Well No. POWELL #9-22
Contractor BEREDCO LLC RIG #1 Charge to BEREXCO LLC
Elevation 2954' KB Formation Atoka Effective Pay _____ Ft. Ticket No. F399
Date 7-17-15 Sec. 22 Twp. 29S S Range 33W W County HASKELL State KANSAS
Test Approved By ED GRIEVES Diamond Representative JAKE FAHRENBRUCH

Formation Test No. 8 Interval Tested from 5054 ft. to 5104 ft. Total Depth 5104 ft.
Packer Depth 5049 ft. Size 6 3/4 in. Packer depth _____ ft. Size 6 3/4 in.
Packer Depth 5054 ft. Size 6 3/4 in. Packer depth _____ ft. Size 6 3/4 in.
Depth of Selective Zone Set _____

Top Recorder Depth (Inside) 5037 ft. Recorder Number 5951 Cap. 5000 P.S.I.
Bottom Recorder Depth (Outside) 5060 ft. Recorder Number 5584 Cap. 5000 P.S.I.
Below Straddle Recorder Depth _____ ft. Recorder Number _____ Cap. _____ P.S.I.

Mud Type CHEMICAL Viscosity 60+ (4# LCM) Drill Collar Length 616 ft. I.D. 2 1/4 in.
Weight 9.1 Water Loss 10.8 cc. Weight Pipe Length 0 ft. I.D. 2 7/8 in.
Chlorides 4,800 P.P.M. Drill Pipe Length 4,405 ft. I.D. 3 1/2 in.
Jars: Make STERLING Serial Number #5 J,J,ShPkrX2 Test Tool Length 33 ft. Tool Size 3 1/2-IF in.
Did Well Flow? GTS Reversed Out NO Anchor Length 50 ft. Size 4 1/2-FH in.
Main Hole Size 7 7/8 Tool Joint Size 4 1/2 XH in. ^{17' PERF IN ANCHOR} Surface Choke Size 1 in. Bottom Choke Size 5/8 in.

Blow: 1st Open: Very strong blow @ BOB in 15 seconds. GTS 3 minutes. Blowback @ 10".
2nd Open: Guage gas, fog mud @ 5 min, mud changed to water @ end of flow. BB @ 10".

Recovered _____ ft. of Recovered flowing sample at end of flow period; MCW w/TR Oil (>1%o, <89%w, 10% m)
Recovered 20 ft. of Watery Oil 65% oil, 35% wtr
Recovered 180 ft. of SOCW 5% oil, 95% wtr
Recovered 450 ft. of Water 100% wtr

Recovered _____ ft. of _____	Price Job
Recovered _____ ft. of _____	Other Charges
Remarks: <u>TOTAL RECOVERED FLUID: 650'</u>	Insurance
<u>Chlorides: 108,000 ppm</u>	
<u>RW: .075 ohm @ 70 F</u> <u>PH: 7.5</u>	Total

Time Set Packer(s) 01:27 A.M. P.M. Time Started Off Bottom 05:57 A.M. P.M. Maximum Temperature 128 F

Initial Hydrostatic Pressure..... (A) 2481 P.S.I.
Initial Flow Period..... Minutes 30 (B) 687 P.S.I. to (C) 762 P.S.I.
Initial Closed In Period..... Minutes 60 (D) 1207 P.S.I.
Final Flow Period..... Minutes 60 (E) 605 P.S.I. to (F) 719 P.S.I.
Final Closed In Period..... Minutes 120 (G) 1195 P.S.I.
Final Hydrostatic Pressure..... (H) 2479 P.S.I.

Diamond Testing shall not be liable for damages of any kind to the property or personnel of the one for whom a test is made or for any loss suffered or sustained, directly or indirectly, through the use of its equipment, or its statement or opinion concerning the result of any test. Tools lost or damaged in the hole shall be paid for at cost by the party for whom the test is made.

DIAMOND TESTING



GAS RATE TICKET

Lease: Powell #9-22
Operator: Berexco LLC
Formation: Atoka 5054'-5104'
Field:
Location: Sec. 22 Twp. 29s Rge. 33W
County: Haskell **State:** Kansas

Initial flow, very strong blow @ BOB in 15 seconds, GTS 3 min.

Final flow, guage gas, fogging mud @ 5 min, mud changed to water at end of flow period.

Fluid sample while flowing, MCW w/tr Oil, >1%o,<89%w,10%m

INITIAL FLOW:

10 min ----- .75" choke ----- 225 psi ----- 2,773,500 cf/day
 *** 20 min ----- .75" choke ----- 220 psi ----- 2,716,000 cf/day *** GAS SAMPLE TAKEN ***
 30 min ----- .75" choke ----- 230 psi ----- 2,831,000 cf/day

FINAL FLOW:

10 min ----- 1.25" choke ----- 57 psi ----- 2,594,000 cf/day
 20 min ----- 1.25" choke ----- 68 psi ----- 2,991,000 cf/day
 30 min ----- 1.25" choke ----- 65 psi ----- 2,883,000 cf/day
 40 min ----- 1.25" choke ----- 72 psi ----- 3,135,000 cf/day (max flow rate)
 50 min ----- 1.25" choke ----- 70 psi ----- 3,063,000 cf/day
 60 min ----- 1.25" choke ----- 70 psi ----- 3,063,000 cf/day (fluid sample taken)