

DIAMOND TESTING GENERAL REPORT

Jake Fahrenbruch, Tester

Cell: (620) 282-8977 / Office: (800) 542-7313



TEST INFORMATION

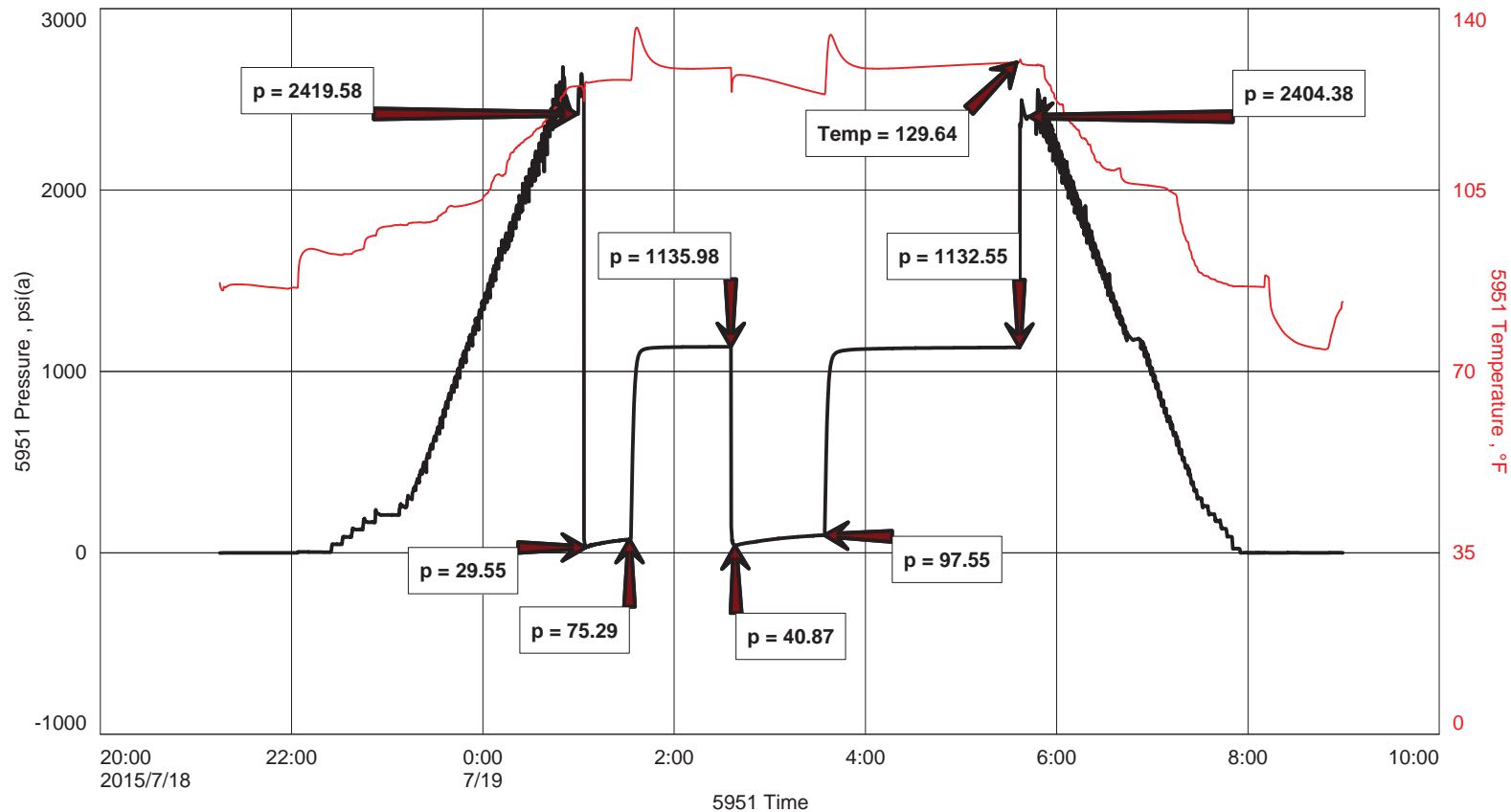
Well Name	Powell #9-22
Company Name	Berexco LLC
Formation	Morrow 5238'-5270'
Test Type	Bottom-Hole w/J,Jnt,ShPkr X 2
Surface Location	Sec 22-29s-33w-Haskell Co.-KS
KB Elevation (SL)	2954.000
Gauge Name	5951
Start Test Date	2015/07/18
Start Test Time	21:15:00
Final Test Date	2015/07/19
Final Test Time	09:01:00
Job Number	F400
Contact	Evan Mayhew
Site Contact	Ed Grieves

TEST RESULTS

Initial flow, strong blow @ BOB in 1 minute, GTS in 22 minutes. No blowback.
 Final flow, strong blow @ BOB in 10 seconds, guage gas. No blowback.

Recovered 30' SOSGCM 15% gas, <1% oil, >84% mud

Powell #9-22





DIAMOND TESTING
 P.O. Box 157
 HOISINGTON, KANSAS 67544
 (800) 542-7313
DRILL-STEM TEST TICKET
 FILE: POWERL 9DST 9

ON LOCATION:	<u>20:00 7-18</u>
START RECORDERS:	<u>21:15 7-18</u>
STOP RECORDERS:	<u>09:01 7-19</u>

Company BEREXCO LLC Lease & Well No. POWERL #9-22
 Contractor BEREXO LLC REG #1 Charge to BEREXCO LLC
 Elevation 2954' NB Formation MORROW Effective Pay _____ Ft. Ticket No. F400
 Date 7-19-15 Sec. 22 Twp. 29s Range 33N County HASKELL State KANSAS
 Test Approved By ED GRIEVES Diamond Representative JAKE FAHRENBRUCH

Formation Test No. 9 Interval Tested from 5238 ft. to 5270 ft. Total Depth 5270 ft.
 Packer Depth 5233 ft. Size 6 3/4 in. Packer depth _____ ft. Size 6 3/4 in.
 Packer Depth 5238 ft. Size 6 3/4 in. Packer depth _____ ft. Size 6 3/4 in.
 Depth of Selective Zone Set _____

Top Recorder Depth (Inside) 5221 ft. Recorder Number 5951 Cap. 5000 P.S.I.
 Bottom Recorder Depth (Outside) 5239 ft. Recorder Number 5584 Cap. 5000 P.S.I.
 Below Straddle Recorder Depth _____ ft. Recorder Number _____ Cap. _____ P.S.I.

Mud Type CHEMICAL Viscosity 55 (6" LCM) Drill Collar Length 616 ft. I.D. 2 1/4 in.
 Weight 9.0 Water Loss 8.8 cc. Weight Pipe Length _____ ft. I.D. 2 7/8 in.
 Chlorides 6400 P.P.M. Drill Pipe Length 4589 ft. I.D. 3 1/2 in.
 Jars: Make STERLING Serial Number JJ, ShPkr X2 Test Tool Length 33 ft. Tool Size 3 1/2-IF in.
 Did Well Flow? GTS Reversed Out _____ Anchor Length 32 ft. Size 4 1/2-FH in.
 Main Hole Size 7 7/8 Tool Joint Size 4 1/2" X H in. Surface Choke Size 1 in. Bottom Choke Size 5/8 in.

Blow: 1st Open: STRONG BLOW @ BOB IN 1 MINUTE. GTS 22 MINUTES. NO BLOWBACK
 2nd Open: STRONG BLOW @ BOB IN 10 SECONDS. GAUGE GAS. NO BLOWBACK

Recovered 30 ft. of SOS GCM 15" GAS, 1" OIL, & 84" MWD
 Recovered _____ ft. of _____
 Recovered _____ ft. of _____
 Recovered _____ ft. of _____
 Recovered _____ ft. of _____
 Recovered _____ ft. of _____
 Remarks: _____

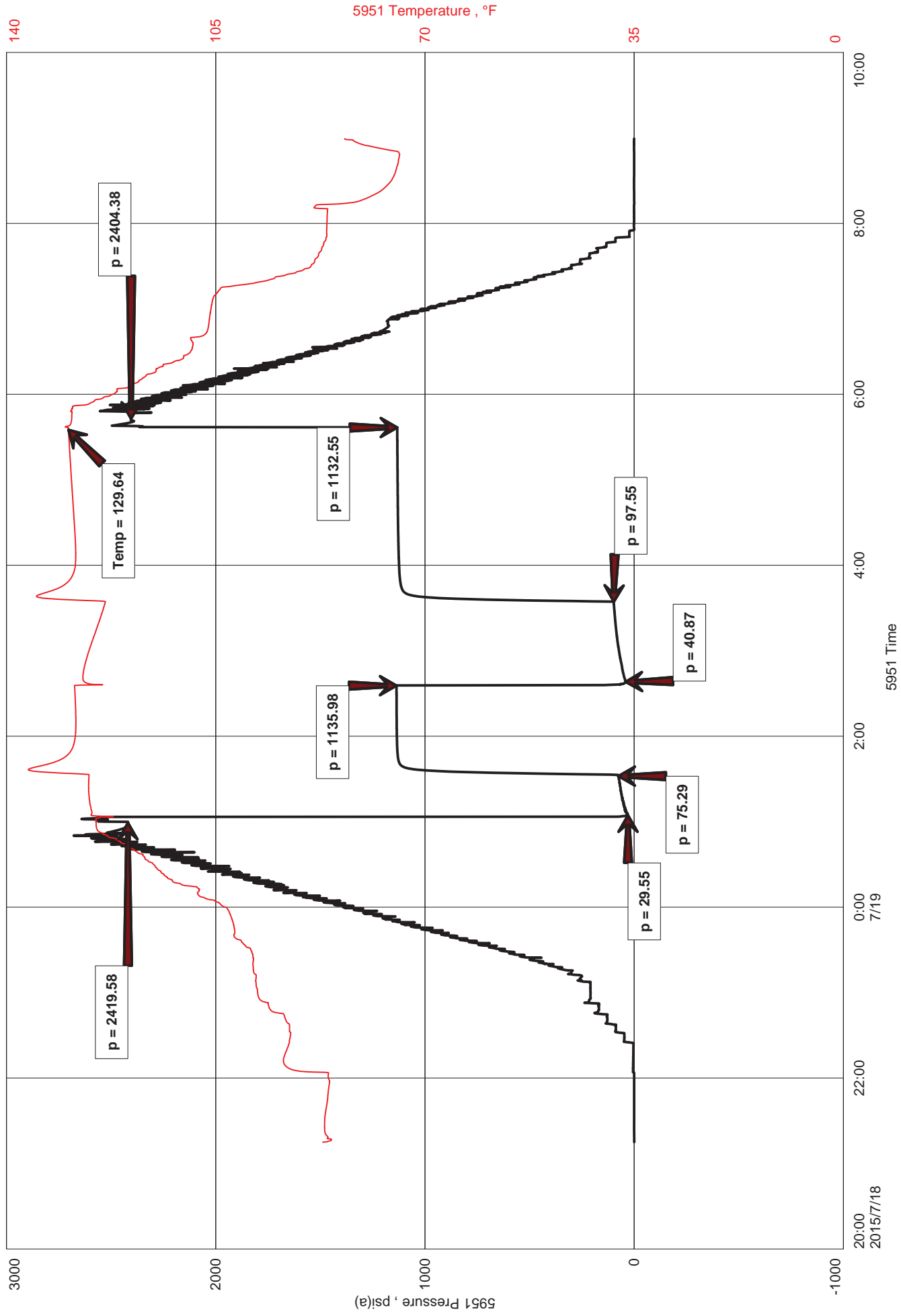
	(24 HR STANDBY)
	Price Job
	Other Charges <u>J, J</u>
	<u>ShPkr X2</u>
	<u>78 MART (GC)</u>
	Total

Time Set Packer(s) 01:06 A.M. P.M. Time Started Off Bottom 05:36 A.M. P.M. Maximum Temperature 130°F

Initial Hydrostatic Pressure..... (A) 2420 P.S.I.
 Initial Flow Period..... Minutes 30 (B) 30 P.S.I. to (C) 75 P.S.I.
 Initial Closed In Period..... Minutes 60 (D) 1136 P.S.I.
 Final Flow Period..... Minutes 60 (E) 41 P.S.I. to (F) 98 P.S.I.
 Final Closed In Period..... Minutes 120 (G) 1133 P.S.I. Thanks!
 Final Hydrostatic Pressure..... (H) 2404 P.S.I. Jake Fahrenbruch

Diamond Testing shall not be liable for damages of any kind to the property or personnel of the one for whom a test is made or for any loss suffered or sustained, directly or indirectly, through the use of its equipment, or its statement or opinion concerning the result of any test. Tools lost or damaged in the hole shall be paid for at cost by the party for whom the test is made.

Powell #9-22





DIAMOND TESTING
P.O. Box 157
HOISINGTON, KANSAS 67544
(800) 542-7313
DRILL-STEM TEST TICKET
FILE: POWELL9DST9

TIME ON: 21:15 7-18-15
TIME OFF: 09:01 7-19-15

Company BEREXCO LLC Lease & Well No. POWELL #9-22
Contractor BEREDCO LLC RIG #1 Charge to BEREXCO LLC
Elevation 2954' KB Formation Morrow Effective Pay _____ Ft. Ticket No. F400
Date 7-19-15 Sec. 22 Twp. 29S S Range 33W W County HASKELL State KANSAS
Test Approved By ED GRIEVES Diamond Representative JAKE FAHRENBRUCH

Formation Test No. 9 Interval Tested from 5238 ft. to 5270 ft. Total Depth 5270 ft.
Packer Depth 5233 ft. Size 6 3/4 in. Packer depth _____ ft. Size 6 3/4 in.
Packer Depth 5238 ft. Size 6 3/4 in. Packer depth _____ ft. Size 6 3/4 in.
Depth of Selective Zone Set _____

Top Recorder Depth (Inside) 5221 ft. Recorder Number 5951 Cap. 5000 P.S.I.
Bottom Recorder Depth (Outside) 5239 ft. Recorder Number 5584 Cap. 5000 P.S.I.
Below Straddle Recorder Depth _____ ft. Recorder Number _____ Cap. _____ P.S.I.

Mud Type CHEMICAL Viscosity 55 (6# LCM) Drill Collar Length 616 ft. I.D. 2 1/4 in.
Weight 9.0 Water Loss 8. cc. Weight Pipe Length 0 ft. I.D. 2 7/8 in.
Chlorides 6,400 P.P.M. Drill Pipe Length 4,589 ft. I.D. 3 1/2 in.
Jars: Make STERLING Serial Number #5 J,J,ShPkrX2 Test Tool Length 33 ft. Tool Size 3 1/2-IF in.
Did Well Flow? GTS Reversed Out NO Anchor Length 32 ft. Size 4 1/2-FH in.
Main Hole Size 7 7/8 Tool Joint Size 4 1/2 XH in. Surface Choke Size 1 in. Bottom Choke Size 5/8 in.

Blow: 1st Open: Strong blow @ BOB in 1 minute. GTS in 22 minutes. No blowback.
2nd Open: Strong blow @ BOB in 10 seconds. Guage gas. No blowback.

Recovered 30 ft. of SOSGCM 15% gas, <1% oil, >84% mud
Recovered _____ ft. of _____
Recovered _____ ft. of _____
Recovered _____ ft. of _____
Recovered _____ ft. of _____
Recovered _____ ft. of _____
Remarks: _____

	Price Job
	Other Charges
	Insurance
	Total

Time Set Packer(s) 01:06 A.M. P.M. Time Started Off Bottom 05:36 A.M. P.M. Maximum Temperature 130 F
Initial Hydrostatic Pressure..... (A) 2420 P.S.I.
Initial Flow Period..... Minutes 30 (B) 30 P.S.I. to (C) 75 P.S.I.
Initial Closed In Period..... Minutes 60 (D) 1136 P.S.I.
Final Flow Period..... Minutes 60 (E) 41 P.S.I. to (F) 98 P.S.I.
Final Closed In Period..... Minutes 120 (G) 1133 P.S.I.
Final Hydrostatic Pressure..... (H) 2404 P.S.I.

Diamond Testing shall not be liable for damages of any kind to the property or personnel of the one for whom a test is made or for any loss suffered or sustained, directly or indirectly, through the use of its equipment, or its statement or opinion concerning the result of any test. Tools lost or damaged in the hole shall be paid for at cost by the party for whom the test is made.

DIAMOND TESTING



GAS RATE TICKET

Lease: Powell #9-22
Operator: Berexco LLC
Formation: Morrow 5238'-5270'
Field:
Location: Sec. 22 Twp. 29s Rge. 33w
County: Haskell **State:** Kansas

Initial flow, strong blow @ BOB in 1 minute.
Gas to surface in 22 minutes.
No blowback.
Final flow, strong blow @ BOB in 10 seconds.
Guage gas.
No blowback.

INITIAL FLOW:

22 min ----- 30 psi ----- .25" choke ----- 61,900 cf/day
30 min ----- 35 psi ----- .25" choke ----- 69,000 cf/day

FINAL FLOW:

10 min ----- 22 psi ----- .25" choke ----- 50,200 cf/day
20 min ----- 37 psi ----- .25" choke ----- 71,800 cf/day
30 min ----- 48 psi ----- .25" choke ----- 86,800 cf/day GAS SAMPLE TAKEN***
40 min ----- 56 psi ----- .25" choke ----- 98,100 cf/day
50 min ----- 63 psi ----- .25" choke ----- 107,800 cf/day
60 min ----- 70 psi ----- .25" choke ----- 117,500 cf/day