



**TRILOBITE TESTING, INC**

# DRILL STEM TEST REPORT

Berexco, LLC.

**9-2N-37W Cheyenne, KS**

2020 N Bramblewood  
Wichita, KS 67206

**Wilkens D #1-9**

Job Ticket: 65207

**DST#: 9**

ATTN: Bryan Bynog

Test Start: 2015.08.05 @ 14:10:00

## GENERAL INFORMATION:

Formation: **Cherokee**

Deviated: No Whipstock: ft (KB)

Time Tool Opened: 17:27:00

Time Test Ended: 23:50:00

Test Type: Conventional Bottom Hole (Initial)

Tester: Kevin Mack

Unit No: 82

**Interval: 4790.00 ft (KB) To 4880.00 ft (KB) (TVD)**

Reference Elevations: 3377.00 ft (KB)

Total Depth: 4880.00 ft (KB) (TVD)

3366.00 ft (CF)

Hole Diameter: 7.88 inches Hole Condition: Good

KB to GR/CF: 11.00 ft

**Serial #: 8520 Inside**

Press@RunDepth: 38.39 psig @ 4791.00 ft (KB)

Capacity: 8000.00 psig

Start Date: 2015.08.05 End Date: 2015.08.05

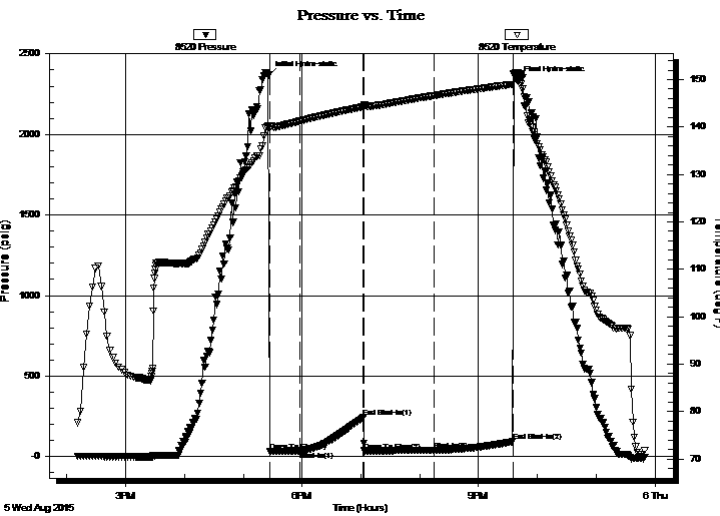
Last Calib.: 2015.08.05

Start Time: 14:11:00 End Time: 23:50:00

Time On Btm: 2015.08.05 @ 17:26:00

Time Off Btm: 2015.08.05 @ 21:39:30

**TEST COMMENT:** 30 - IF- 1/2" Blow died in 25 min.  
60 - IS- No Return  
60 - FF- No Blow  
90 - FS- No Return



## PRESSURE SUMMARY

Time (Min.)	Pressure (psig)	Temp (deg F)	Annotation
0	2366.98	140.22	Initial Hydro-static
1	32.11	139.71	Open To Flow (1)
32	36.51	141.28	Shut-In(1)
97	243.51	144.27	End Shut-In(1)
98	36.43	144.57	Open To Flow (2)
169	38.39	146.59	Shut-In(2)
249	93.03	148.99	End Shut-In(2)
254	2333.68	151.50	Final Hydro-static

## Recovery

Length (ft)	Description	Volume (bbl)
10.00	OSM 100M (oil spots)	0.05
1.00	Free Oil 100o	0.00

## Gas Rates

	Choke (inches)	Pressure (psig)	Gas Rate (Mcf/d)



**TRILOBITE  
TESTING, INC**

# DRILL STEM TEST REPORT

## FLUID SUMMARY

Berexco, LLC.

**9-2N-37W Cheyenne, KS**

2020 N Bramblewood  
Wichita, KS 67206

**Wilkins D #1-9**

Job Ticket: 65207

**DST#: 9**

ATTN: Bryan Bynog

Test Start: 2015.08.05 @ 14:10:00

### Mud and Cushion Information

Mud Type: Gel Chem

Cushion Type:

Oil API:

deg API

Mud Weight: 9.00 lb/gal

Cushion Length:

ft

Water Salinity:

ppm

Viscosity: 52.00 sec/qt

Cushion Volume:

bbbl

Water Loss: 6.80 in<sup>3</sup>

Gas Cushion Type:

Resistivity: 0.00 ohm.m

Gas Cushion Pressure:

psig

Salinity: 900.00 ppm

Filter Cake: 2.00 inches

### Recovery Information

Recovery Table

Length ft	Description	Volume bbbl
10.00	OSM 100M (oil spots)	0.049
1.00	Free Oil 100o	0.005

Total Length: 11.00 ft      Total Volume: 0.054 bbl

Num Fluid Samples: 0

Num Gas Bombs: 0

Serial #:

Laboratory Name:

Laboratory Location:

Recovery Comments:

