



**TRILOBITE
TESTING, INC.**

DRILL STEM TEST REPORT

Samuel Gary Jr & Associates, Inc.

27/5s/35w Rawlins KS

1515 Wynkoop STE 700
Denver, CO 80202

Curry #1-27

Job Ticket: 62186

DST#: 1

ATTN: Chris Mitchell

Test Start: 2015.06.15 @ 00:03:00

GENERAL INFORMATION:

Formation: **Oread**

Deviated: No Whipstock: ft (KB)

Time Tool Opened: 02:52:30

Time Test Ended: 09:30:45

Test Type: Conventional Bottom Hole (Initial)

Tester: James Winder

Unit No: 83

Interval: 4057.00 ft (KB) To 4097.00 ft (KB) (TVD)

Reference Elevations: 3281.00 ft (KB)

Total Depth: 4097.00 ft (KB) (TVD)

3276.00 ft (CF)

Hole Diameter: 7.88 inches Hole Condition: Fair

KB to GR/CF: 5.00 ft

Serial #: 8791

Inside

Press@RunDepth: 273.70 psig @ 4058.00 ft (KB)

Capacity: 8000.00 psig

Start Date: 2015.06.15

End Date:

2015.06.15

Last Calib.:

2015.06.15

Start Time: 00:03:05

End Time:

09:30:45

Time On Btm:

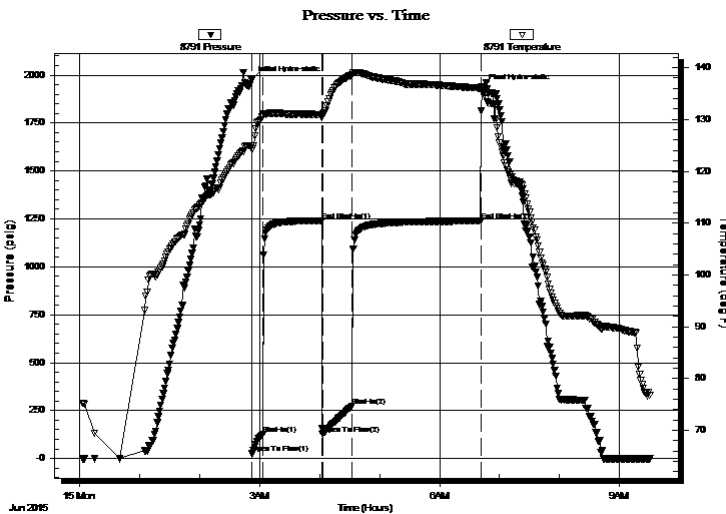
2015.06.15 @ 02:52:15

Time Off Btm:

2015.06.15 @ 06:42:00

TEST COMMENT: 10 - IF: Blow built to BOB (11") in 9 1/4 min.
60 - ISI: No blow back
30 - FF: Blow built to BOB at 11 min.
120 - FSI: No blow back

PRESSURE SUMMARY



Time (Min.)	Pressure (psig)	Temp (deg F)	Annotation
0	1973.81	124.90	Initial Hydro-static
1	25.11	124.24	Open To Flow (1)
11	125.89	130.74	Shut-In(1)
70	1241.23	130.98	End Shut-In(1)
71	126.94	130.67	Open To Flow (2)
101	273.70	138.59	Shut-In(2)
229	1239.12	136.05	End Shut-In(2)
230	1930.93	135.82	Final Hydro-static

Recovery

Length (ft)	Description	Volume (bbl)
425.00	MCW 86%w, 14%m	4.35
125.00	MW 50%w, 50%m	1.75
30.00	SWCM 98%m, 2%w	0.42

Gas Rates

	Choke (inches)	Pressure (psig)	Gas Rate (Mcf/d)



TRILOBITE TESTING, INC.

DRILL STEM TEST REPORT

Samuel Gary Jr & Associates, Inc.

27/5s/35w Rawlins KS

1515 Wynkoop STE 700
Denver, CO 80202

Curry #1-27

Job Ticket: 62186

DST#: 1

ATTN: Chris Mitchell

Test Start: 2015.06.15 @ 00:03:00

GENERAL INFORMATION:

Formation: **Oread**

Deviated: No Whipstock: ft (KB)

Time Tool Opened: 02:52:30

Time Test Ended: 09:30:45

Test Type: Conventional Bottom Hole (Initial)

Tester: James Winder

Unit No: 83

Interval: 4057.00 ft (KB) To 4097.00 ft (KB) (TVD)

Reference Elevations: 3281.00 ft (KB)

Total Depth: 4097.00 ft (KB) (TVD)

3276.00 ft (CF)

Hole Diameter: 7.88 inches Hole Condition: Fair

KB to GR/CF: 5.00 ft

Serial #: 8320 Fluid

Press@RunDepth: psig @ 4025.00 ft (KB)

Capacity: 8000.00 psig

Start Date: 2015.06.15

End Date:

2015.06.15

Last Calib.:

2015.06.15

Start Time: 00:03:05

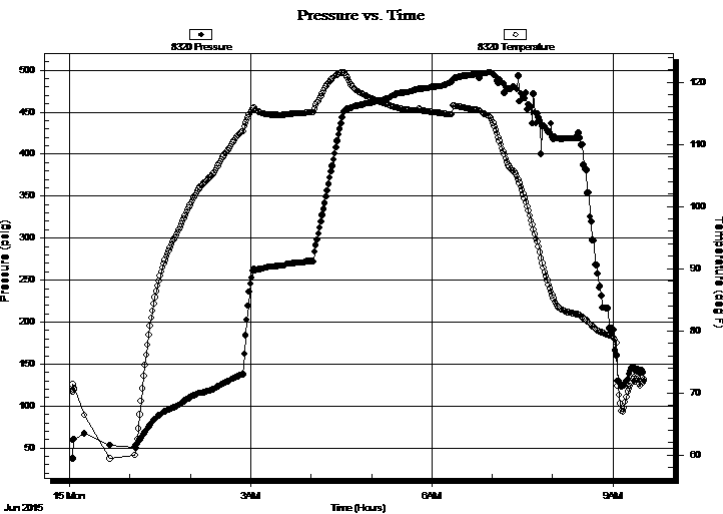
End Time:

09:31:15

Time On Btm:

Time Off Btm:

TEST COMMENT: 10 - IF: Blow built to BOB (11") in 9 1/4 min.
60 - ISI: No blow back
30 - FF: Blow built to BOB at 11 min.
120 - FSI: No blow back



PRESSURE SUMMARY

Time (Min.)	Pressure (psig)	Temp (deg F)	Annotation

Recovery

Gas Rates

Length (ft)	Description	Volume (bbl)
425.00	MCW 86%w, 14%m	4.35
125.00	MW 50%w, 50%m	1.75
30.00	SWCM 98%m, 2%w	0.42

	Choke (inches)	Pressure (psig)	Gas Rate (Mcf/d)



**TRILOBITE
TESTING, INC**

DRILL STEM TEST REPORT

FLUID SUMMARY

Samuel Gary Jr & Associates, Inc.

27/5s/35w Rawlins KS

1515 Wynkoop STE 700
Denver, CO 80202

Curry #1-27

Job Ticket: 62186

DST#: 1

ATTN: Chris Mitchell

Test Start: 2015.06.15 @ 00:03:00

Mud and Cushion Information

Mud Type: Gel Chem

Cushion Type:

Oil API:

deg API

Mud Weight: 9.00 lb/gal

Cushion Length:

ft

Water Salinity:

27000 ppm

Viscosity: 51.00 sec/qt

Cushion Volume:

bbbl

Water Loss: 6.19 in³

Gas Cushion Type:

Resistivity: ohm.m

Gas Cushion Pressure:

psig

Salinity: 1000.00 ppm

Filter Cake: 1.00 inches

Recovery Information

Recovery Table

Length ft	Description	Volume bbl
425.00	MCW 86%w , 14%m	4.349
125.00	MW 50%w , 50%m	1.753
30.00	SWCM 98%m, 2%w	0.421

Total Length: 580.00 ft Total Volume: 6.523 bbl

Num Fluid Samples: 0

Num Gas Bombs: 0

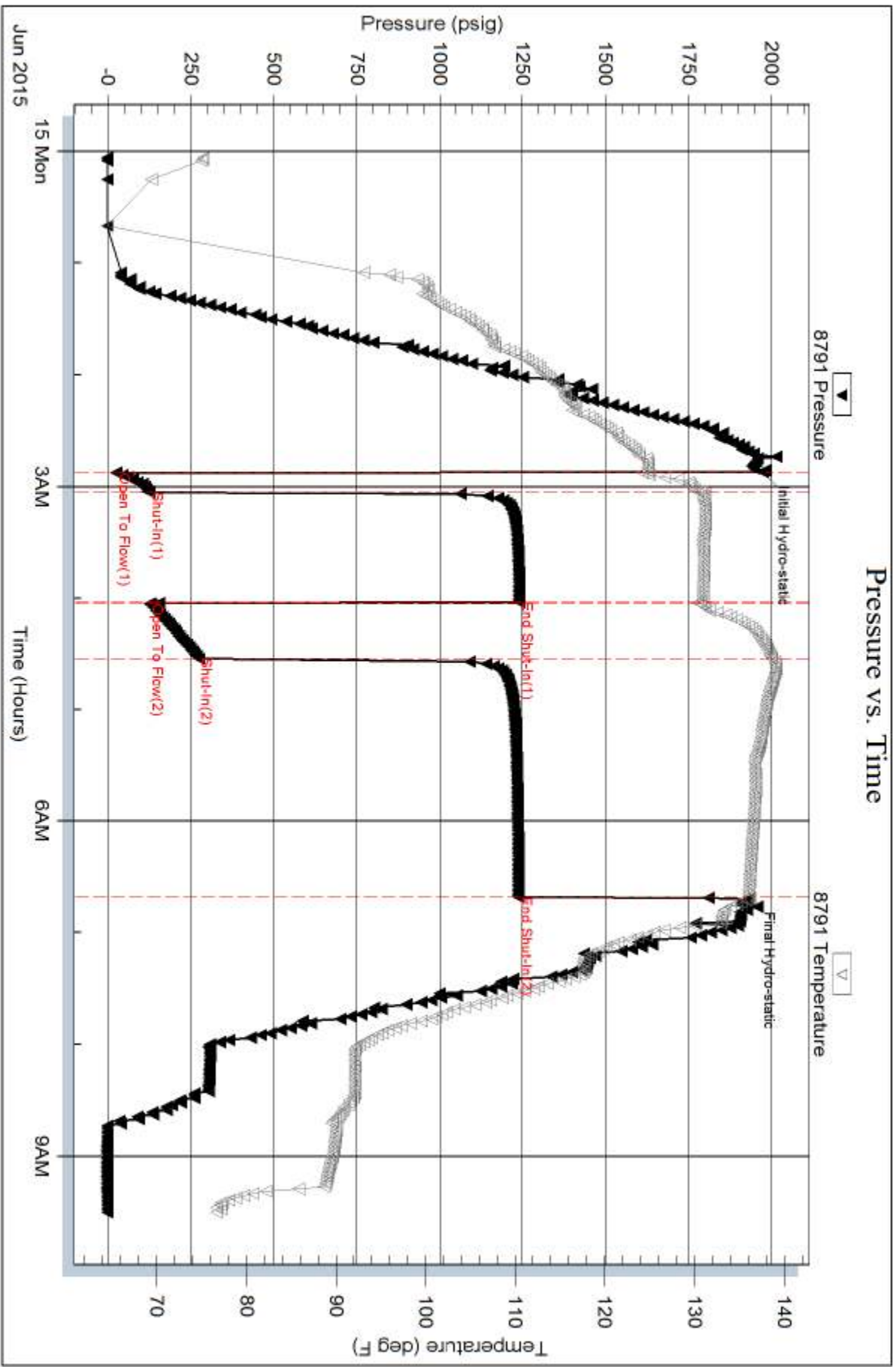
Serial #:

Laboratory Name:

Laboratory Location:

Recovery Comments: RW = .242 ohms @ 76.3 deg F

Chlorides = 27000 ppm



Serial #: 8320

Fluid

Samuel Gary Jr & Associates, Inc.

Curry #1-27

DST Test Number: 1

