



**TRILOBITE  
TESTING, INC**

# DRILL STEM TEST REPORT

Samuel Gary Jr & Associates, Inc.

**27/5s/35w Rawlins KS**

1515 Wynkoop STE 700  
Denver, CO 80202

**Curry #1-27**

Job Ticket: 62187

**DST#: 2**

ATTN: Chris Mitchell

Test Start: 2015.06.17 @ 01:30:00

## GENERAL INFORMATION:

Formation: **Marmaton**

Deviated: No Whipstock: ft (KB)

Time Tool Opened: 04:16:30

Time Test Ended: 09:53:45

Test Type: Conventional Bottom Hole (Reset)

Tester: James Winder

Unit No: 83

**Interval: 4464.00 ft (KB) To 4490.00 ft (KB) (TVD)**

Reference Elevations: 3281.00 ft (KB)

Total Depth: 4490.00 ft (KB) (TVD)

3276.00 ft (CF)

Hole Diameter: 7.88 inches Hole Condition: Fair

KB to GR/CF: 5.00 ft

**Serial #: 8791**

**Inside**

Press@RunDepth: 51.01 psig @ 4465.00 ft (KB)

Capacity: 8000.00 psig

Start Date: 2015.06.17

End Date:

2015.06.17

Last Calib.:

2015.06.17

Start Time: 01:30:05

End Time:

09:53:44

Time On Btm:

2015.06.17 @ 04:16:15

Time Off Btm:

2015.06.17 @ 08:05:15

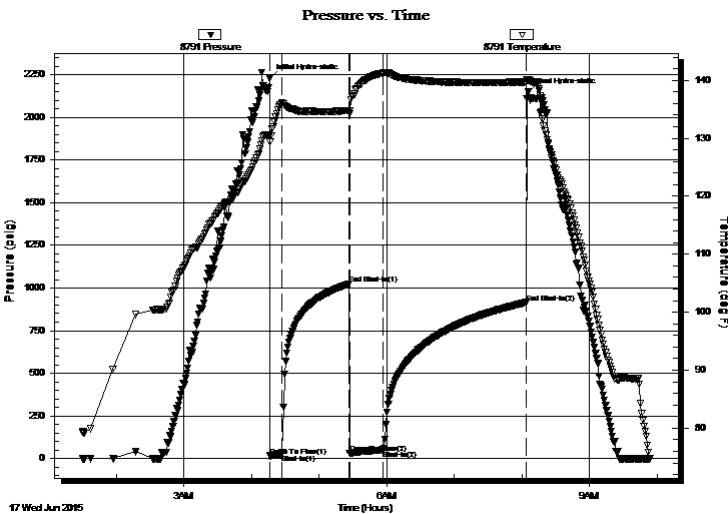
TEST COMMENT: 10 - IF: Blow built to just under 2"

60 - IS: No blow back

30 - FF: Blow started at 3 min., built to 1"

120 - FS: No blow back

## PRESSURE SUMMARY



Time (Min.)	Pressure (psig)	Temp (deg F)	Annotation
0	2228.08	130.45	Initial Hydro-static
1	16.14	129.38	Open To Flow (1)
11	27.32	136.04	Shut-In(1)
71	1023.89	134.78	End Shut-In(1)
71	30.14	134.26	Open To Flow (2)
101	51.01	141.26	Shut-In(2)
228	914.88	139.71	End Shut-In(2)
229	2148.07	140.00	Final Hydro-static

## Recovery

Length (ft)	Description	Volume (bbl)
80.00	MCW w/trace oil 65%w , 35%m	0.39

\* Recovery from multiple tests

## Gas Rates

Choke (inches)	Pressure (psig)	Gas Rate (Mcf/d)



**TRILOBITE TESTING, INC.**

## DRILL STEM TEST REPORT

Samuel Gary Jr & Associates, Inc.

27/5s/35w Rawlins KS

1515 Wynkoop STE 700  
Denver, CO 80202

**Curry #1-27**

Job Ticket: 62187

**DST#: 2**

ATTN: Chris Mitchell

Test Start: 2015.06.17 @ 01:30:00

### GENERAL INFORMATION:

Formation: **Marmaton**

Deviated: No Whipstock: ft (KB)

Time Tool Opened: 04:16:30

Time Test Ended: 09:53:45

Test Type: Conventional Bottom Hole (Reset)

Tester: James Winder

Unit No: 83

Interval: **4464.00 ft (KB) To 4490.00 ft (KB) (TVD)**

Reference Elevations: 3281.00 ft (KB)

Total Depth: 4490.00 ft (KB) (TVD)

3276.00 ft (CF)

Hole Diameter: 7.88 inches Hole Condition: Fair

KB to GR/CF: 5.00 ft

**Serial #: 8017 Fluid**

Press@RunDepth: psig @ 4432.00 ft (KB)

Capacity: 8000.00 psig

Start Date: 2015.06.17

End Date: 2015.06.17

Last Calib.: 2015.06.17

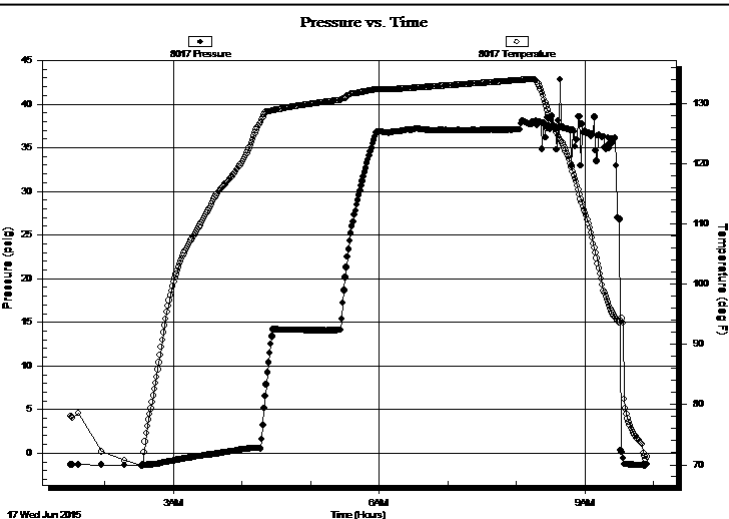
Start Time: 01:30:05

End Time: 09:54:14

Time On Btm:

Time Off Btm:

**TEST COMMENT:** 10 - IF: Blow built to just under 2"  
60 - ISI: No blow back  
30 - FF: Blow started at 3 min., built to 1"  
120 - FSI: No blow back



### PRESSURE SUMMARY

Time (Min.)	Pressure (psig)	Temp (deg F)	Annotation

### Recovery

Length (ft)	Description	Volume (bbl)
80.00	MCW w/trace oil 65%w, 35%m	0.39

### Gas Rates

Choke (inches)	Pressure (psig)	Gas Rate (Mcf/d)

\* Recovery from multiple tests



**TRILOBITE  
TESTING, INC**

# DRILL STEM TEST REPORT

**FLUID SUMMARY**

Samuel Gary Jr & Associates, Inc.

**27/5s/35w Rawlins KS**

1515 Wynkoop STE 700  
Denver, CO 80202

**Curry #1-27**

Job Ticket: 62187

**DST#: 2**

ATTN: Chris Mitchell

Test Start: 2015.06.17 @ 01:30:00

## Mud and Cushion Information

Mud Type: Gel Chem

Cushion Type:

Oil API:

deg API

Mud Weight: 9.00 lb/gal

Cushion Length:

ft

Water Salinity:

20000 ppm

Viscosity: 63.00 sec/qt

Cushion Volume:

bbbl

Water Loss: 7.98 in<sup>3</sup>

Gas Cushion Type:

Resistivity: ohm.m

Gas Cushion Pressure:

psig

Salinity: 3000.00 ppm

Filter Cake: 1.00 inches

## Recovery Information

Recovery Table

Length ft	Description	Volume bbbl
80.00	MCW w/trace oil 65%w , 35%m	0.393

Total Length: 80.00 ft      Total Volume: 0.393 bbl

Num Fluid Samples: 0

Num Gas Bombs: 0

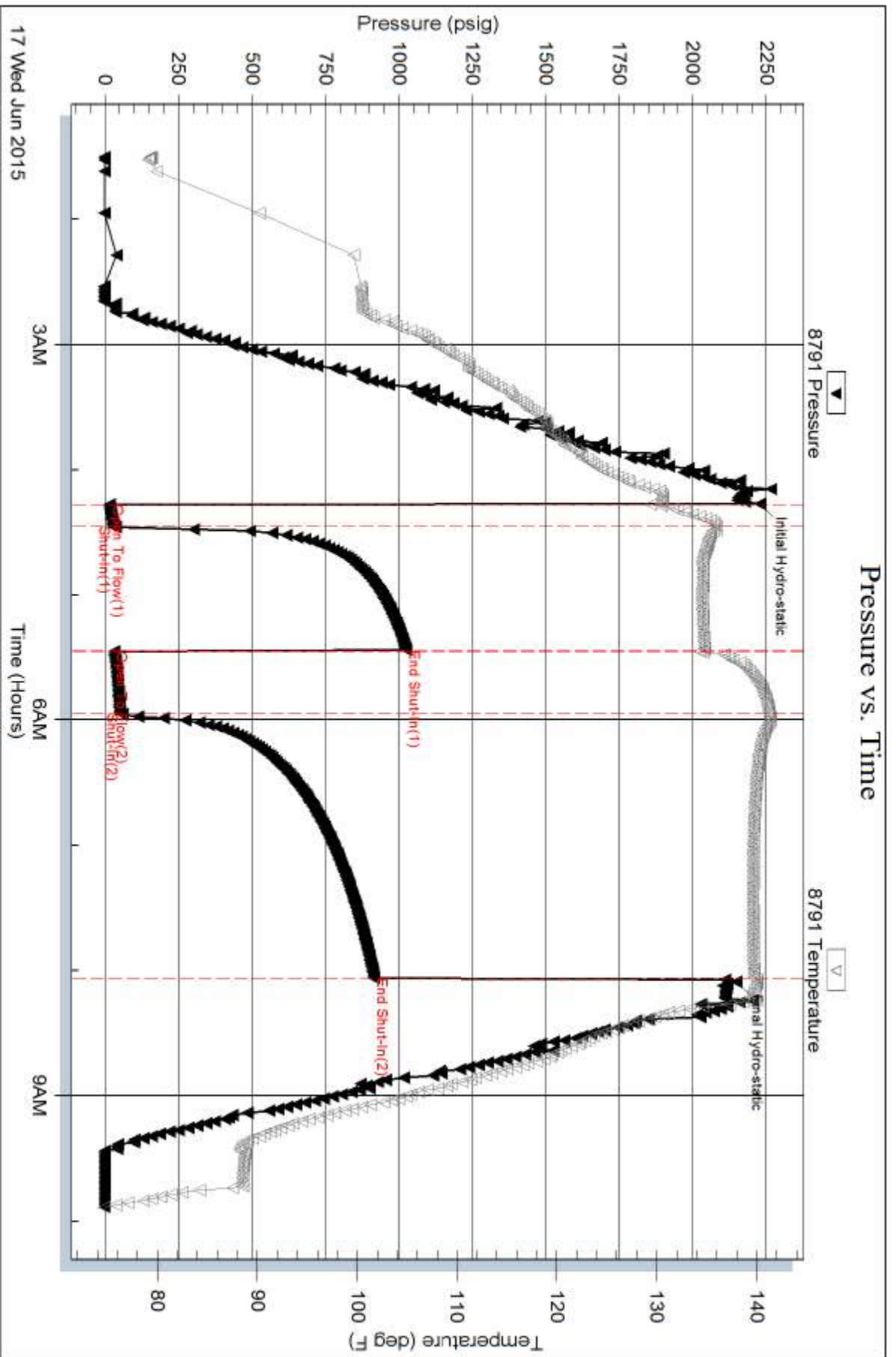
Serial #:

Laboratory Name:

Laboratory Location:

Recovery Comments: RW = .355 ohms @ 66.8 deg F

Chlorides = 20,000 ppm



Serial #: 8017

Fluid

Samuel Gary Jr & Associates, Inc.

Curry #1-27

DST Test Number: 2

