



DRILL STEM TEST REPORT

Prepared For: **American Land And Energy LLC**

7277 Tenby Way
Castle Pines CO 80108

ATTN: Lyle Herrman

Vonfeldt #1

7-15s-16w Ellis,KS

Start Date: 2015.09.15 @ 00:15:00

End Date: 2015.09.15 @ 08:03:00

Job Ticket #: 61659 DST #: 1

Trilobite Testing, Inc
1515 Commerce Parkway Hays, KS 67601
ph: 785-625-4778 fax: 785-625-5620

Printed: 2015.09.17 @ 09:48:46



TRILOBITE TESTING, INC.

DRILL STEM TEST REPORT

American Land And Energy LLC

7-15s-16w Ellis,KS

7277 Tenby Way
Castle Pines CO 80108

Vonfeldt #1

Job Ticket: 61659

DST#: 1

ATTN: Lyle Herrman

Test Start: 2015.09.15 @ 00:15:00

GENERAL INFORMATION:

Formation: **LKC " A - C "**

Deviated: No Whipstock: ft (KB)

Time Tool Opened: 03:14:30

Time Test Ended: 08:03:00

Test Type: Conventional Bottom Hole (Initial)

Tester: Jim Svaty

Unit No: 76

Interval: 3154.00 ft (KB) To 3211.00 ft (KB) (TVD)

Reference Elevations: 1890.00 ft (KB)

Total Depth: 3211.00 ft (KB) (TVD)

1884.00 ft (CF)

Hole Diameter: 7.88 inches Hole Condition: Fair

KB to GR/CF: 6.00 ft

Serial #: 8289 Outside

Press@RunDepth: 59.05 psig @ 3155.00 ft (KB)

Capacity: 8000.00 psig

Start Date: 2015.09.15

End Date:

2015.09.15

Last Calib.: 2015.09.15

Start Time: 00:15:02

End Time:

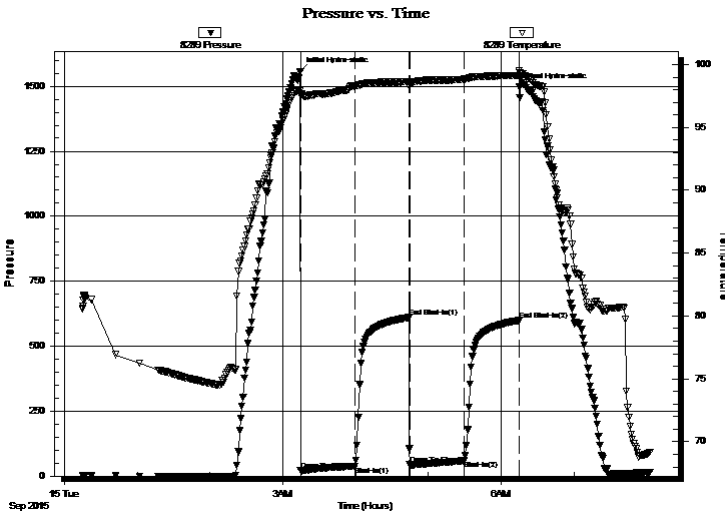
08:03:00

Time On Btm: 2015.09.15 @ 03:14:15

Time Off Btm: 2015.09.15 @ 06:15:00

TEST COMMENT: 45-IF- Surface Blow Building to 5 1/2"
45-IS- No Blow
45-FF- Surface Blow in 4 min. Building to 3 1/4"
45-FS- No Blow

PRESSURE SUMMARY



Time (Min.)	Pressure (psig)	Temp (deg F)	Annotation
0	1557.51	97.99	Initial Hydro-static
1	21.26	97.56	Open To Flow (1)
46	38.27	98.28	Shut-In(1)
90	610.35	98.63	End Shut-In(1)
91	43.71	98.46	Open To Flow (2)
135	59.05	98.83	Shut-In(2)
181	599.16	99.14	End Shut-In(2)
181	1496.46	99.53	Final Hydro-static

Recovery

Length (ft)	Description	Volume (bbl)
93.00	WCM 35%w 65%m	1.30
0.00	Show of Oil in Tool	0.00

Gas Rates

	Choke (inches)	Pressure (psig)	Gas Rate (Mcf/d)



**TRILOBITE
TESTING, INC**

DRILL STEM TEST REPORT

TOOL DIAGRAM

American Land And Energy LLC

7-15s-16w Ellis,KS

7277 Tenby Way
Castle Pines CO 80108

Vonfeldt #1

Job Ticket: 61659

DST#: 1

ATTN: Lyle Herrman

Test Start: 2015.09.15 @ 00:15:00

Tool Information

Drill Pipe:	Length: 3163.00 ft	Diameter: 3.80 inches	Volume: 44.37 bbl	Tool Weight: 2500.00 lb
Heavy Wt. Pipe:	Length: 0.00 ft	Diameter: 2.75 inches	Volume: 0.00 bbl	Weight set on Packer: 25000.00 lb
Drill Collar:	Length: 0.00 ft	Diameter: 2.25 inches	Volume: 0.00 bbl	Weight to Pull Loose: 44000.00 lb
			<u>Total Volume: 44.37 bbl</u>	Tool Chased 0.00 ft
Drill Pipe Above KB:	30.00 ft			String Weight: Initial 40000.00 lb
Depth to Top Packer:	3154.00 ft			Final 40000.00 lb
Depth to Bottom Packer:	ft			
Interval between Packers:	57.00 ft			
Tool Length:	78.00 ft			
Number of Packers:	2	Diameter: 6.75 inches		

Tool Comments:

Tool Description

Tool Description	Length (ft)	Serial No.	Position	Depth (ft)	Accum. Lengths
Change Over Sub	1.00			3134.00	
Shut In Tool	5.00			3139.00	
Hydraulic tool	5.00			3144.00	
Packer	5.00			3149.00	21.00 Bottom Of Top Packer
Packer	5.00			3154.00	
Stubb	1.00			3155.00	
Recorder	0.00	8789	Inside	3155.00	
Recorder	0.00	8289	Outside	3155.00	
Perforations	20.00			3175.00	
Change Over Sub	1.00			3176.00	
Blank Spacing	31.00			3207.00	
Change Over Sub	1.00			3208.00	
Bullnose	3.00			3211.00	57.00 Bottom Packers & Anchor

Total Tool Length: 78.00



**TRILOBITE
TESTING, INC**

DRILL STEM TEST REPORT

FLUID SUMMARY

American Land And Energy LLC

7-15s-16w Ellis,KS

7277 Tenby Way
Castle Pines CO 80108

Vonfeldt #1

Job Ticket: 61659

DST#: 1

ATTN: Lyle Herrman

Test Start: 2015.09.15 @ 00:15:00

Mud and Cushion Information

Mud Type: Gel Chem

Cushion Type:

Oil API:

deg API

Mud Weight: 9.00 lb/gal

Cushion Length:

ft

Water Salinity:

24500 ppm

Viscosity: 55.00 sec/qt

Cushion Volume:

bbbl

Water Loss: 8.34 in³

Gas Cushion Type:

Resistivity: ohm.m

Gas Cushion Pressure:

psig

Salinity: 2000.00 ppm

Filter Cake: 1.00 inches

Recovery Information

Recovery Table

Length ft	Description	Volume bbl
93.00	WCM 35%w 65%m	1.305
0.00	Show of Oil in Tool	0.000

Total Length: 93.00 ft

Total Volume: 1.305 bbl

Num Fluid Samples: 0

Num Gas Bombs: 0

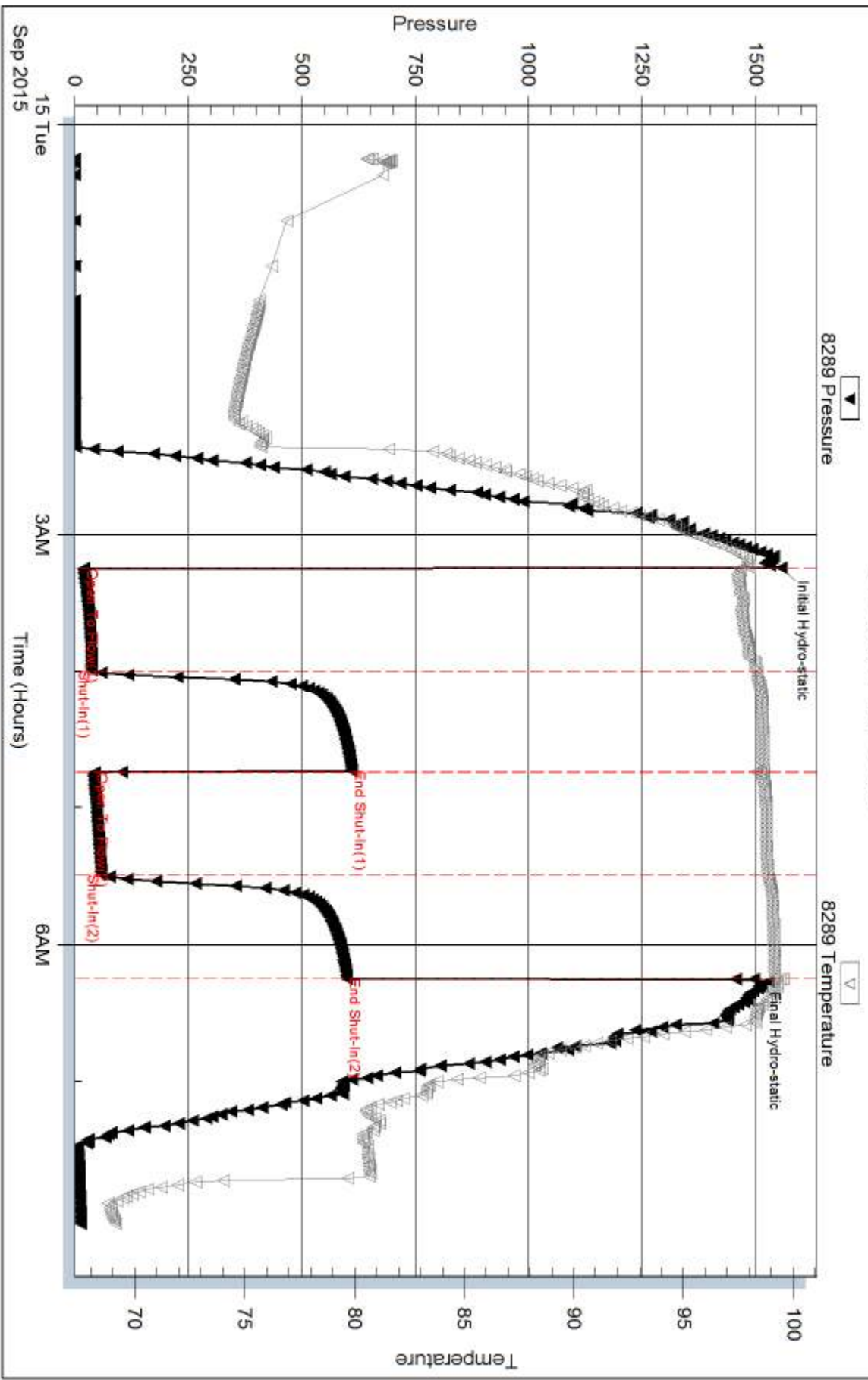
Serial #:

Laboratory Name:

Laboratory Location:

Recovery Comments: .265 @ 73

Pressure vs. Time



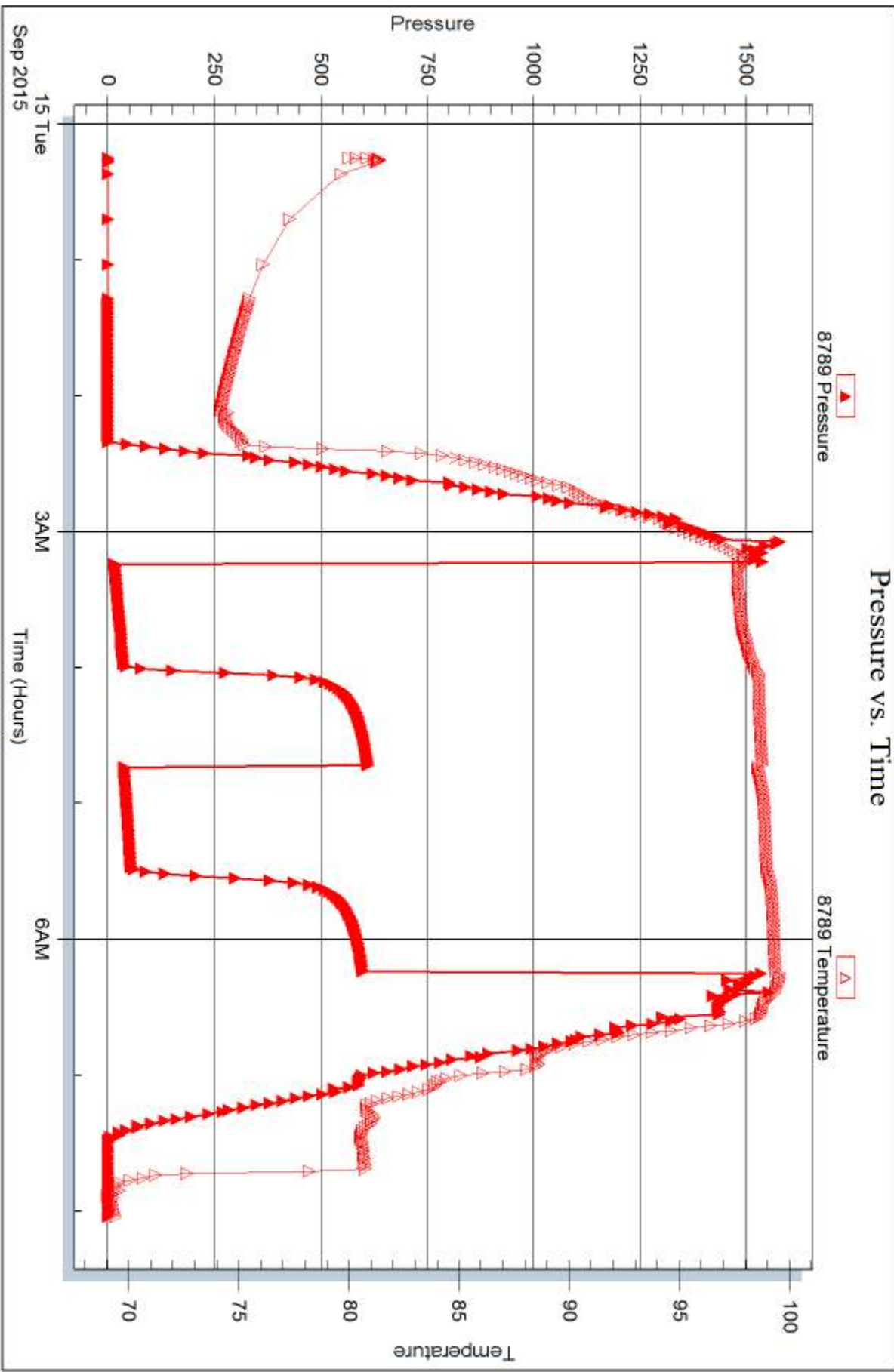
Serial #: 8789

Inside

American Land And Energy LLC

Vonfeldt #1

DST Test Number: 1



Trilobite Testing, Inc

Ref. No: 61659

Printed: 2015.09.17 @ 09:48:48



DRILL STEM TEST REPORT

Prepared For: **American Land And Energy LLC**

7277 Tenby Way
Castle Pines CO 80108

ATTN: Lyle Herrman

Vonfeldt #1

7-15s-16w Ellis,KS

Start Date: 2015.09.15 @ 16:34:00

End Date: 2015.09.15 @ 21:22:00

Job Ticket #: 61660 DST #: 2

Trilobite Testing, Inc
1515 Commerce Parkway Hays, KS 67601
ph: 785-625-4778 fax: 785-625-5620

Printed: 2015.09.17 @ 09:47:59



TRILOBITE TESTING, INC

DRILL STEM TEST REPORT

American Land And Energy LLC

7-15s-16w Ellis,KS

7277 Tenby Way
Castle Pines CO 80108

Vonfeldt #1

Job Ticket: 61660

DST#: 2

ATTN: Lyle Herrman

Test Start: 2015.09.15 @ 16:34:00

GENERAL INFORMATION:

Formation: **LKC " F - G "**

Deviated: No Whipstock: ft (KB)

Time Tool Opened: 18:08:15

Time Test Ended: 21:22:00

Test Type: Conventional Bottom Hole (Reset)

Tester: Jim Svaty

Unit No: 76

Interval: 3231.00 ft (KB) To 3280.00 ft (KB) (TVD)

Reference Elevations: 1890.00 ft (KB)

Total Depth: 3280.00 ft (KB) (TVD)

1884.00 ft (CF)

Hole Diameter: 7.88 inches Hole Condition: Fair

KB to GR/CF: 6.00 ft

Serial #: 8289 Outside

Press@RunDepth: 45.72 psig @ 3245.00 ft (KB)

Capacity: 8000.00 psig

Start Date: 2015.09.15 End Date: 2015.09.15

Last Calib.: 2015.09.15

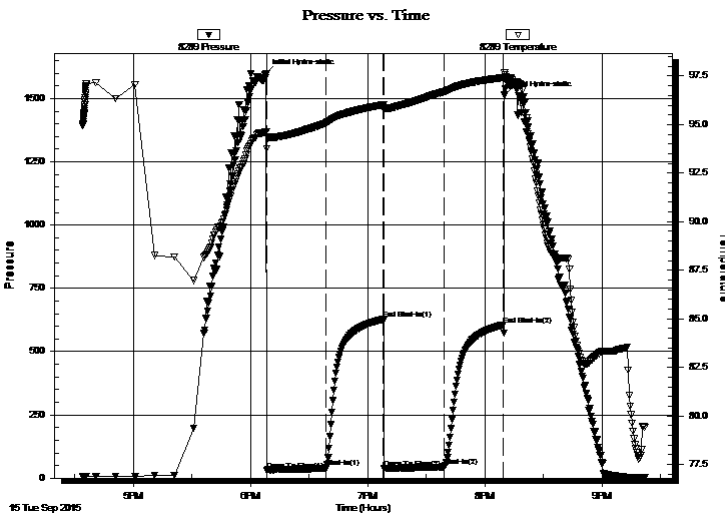
Start Time: 16:34:02 End Time: 21:22:00

Time On Btm: 2015.09.15 @ 18:08:00

Time Off Btm: 2015.09.15 @ 20:10:00

TEST COMMENT: 30-IF- Surface Blow Building to 1/2" In 10 min.
30-ISI- No Blow
30-FF- Surface Blow in 17 min.
30-FSI- No Blow

PRESSURE SUMMARY



Time (Min.)	Pressure (psig)	Temp (deg F)	Annotation
0	1599.79	94.65	Initial Hydro-static
1	31.76	93.77	Open To Flow (1)
31	41.02	95.08	Shut-In(1)
60	628.47	96.02	End Shut-In(1)
61	39.35	95.77	Open To Flow (2)
92	45.72	96.69	Shut-In(2)
122	606.01	97.42	End Shut-In(2)
122	1513.01	97.68	Final Hydro-static

Recovery

Length (ft)	Description	Volume (bbl)
30.00	Mud 100% Show of Oil in Tool	0.42

* Recovery from multiple tests

Gas Rates

Choke (inches)	Pressure (psig)	Gas Rate (Mcf/d)



**TRILOBITE
TESTING, INC**

DRILL STEM TEST REPORT

TOOL DIAGRAM

American Land And Energy LLC

7-15s-16w Ellis,KS

7277 Tenby Way
Castle Pines CO 80108

Vonfeldt #1

Job Ticket: 61660

DST#: 2

ATTN: Lyle Herrman

Test Start: 2015.09.15 @ 16:34:00

Tool Information

Drill Pipe:	Length: 3225.00 ft	Diameter: 3.80 inches	Volume: 45.24 bbl	Tool Weight: 2500.00 lb
Heavy Wt. Pipe:	Length: 0.00 ft	Diameter: 2.75 inches	Volume: 0.00 bbl	Weight set on Packer: 25000.00 lb
Drill Collar:	Length: 0.00 ft	Diameter: 2.25 inches	Volume: 0.00 bbl	Weight to Pull Loose: 44000.00 lb
			<u>Total Volume: 45.24 bbl</u>	Tool Chased 0.00 ft
Drill Pipe Above KB:	15.00 ft			String Weight: Initial 42000.00 lb
Depth to Top Packer:	3231.00 ft			Final 42000.00 lb
Depth to Bottom Packer:	ft			
Interval between Packers:	49.00 ft			
Tool Length:	70.00 ft			
Number of Packers:	2	Diameter: 6.75 inches		

Tool Comments:

Tool Description	Length (ft)	Serial No.	Position	Depth (ft)	Accum. Lengths
------------------	-------------	------------	----------	------------	----------------

Change Over Sub	1.00			3211.00	
Shut In Tool	5.00			3216.00	
Hydraulic tool	5.00			3221.00	
Packer	5.00			3226.00	21.00 Bottom Of Top Packer
Packer	5.00			3231.00	
Stubb	1.00			3232.00	
Perforations	12.00			3244.00	
Change Over Sub	1.00			3245.00	
Recorder	0.00	8789	Inside	3245.00	
Recorder	0.00	8289	Outside	3245.00	
Blank Spacing	31.00			3276.00	
Change Over Sub	1.00			3277.00	
Bullnose	3.00			3280.00	49.00 Bottom Packers & Anchor

Total Tool Length: 70.00



**TRILOBITE
TESTING, INC**

DRILL STEM TEST REPORT

FLUID SUMMARY

American Land And Energy LLC

7-15s-16w Ellis,KS

7277 Tenby Way
Castle Pines CO 80108

Vonfeldt #1

Job Ticket: 61660

DST#: 2

ATTN: Lyle Herrman

Test Start: 2015.09.15 @ 16:34:00

Mud and Cushion Information

Mud Type: Gel Chem

Cushion Type:

Oil API:

deg API

Mud Weight: 9.00 lb/gal

Cushion Length:

ft

Water Salinity:

ppm

Viscosity: 51.00 sec/qt

Cushion Volume:

bbbl

Water Loss: 8.77 in³

Gas Cushion Type:

Resistivity: ohm.m

Gas Cushion Pressure:

psig

Salinity: 3300.00 ppm

Filter Cake: 1.00 inches

Recovery Information

Recovery Table

Length ft	Description	Volume bbl
30.00	Mud 100% Show of Oil in Tool	0.421

Total Length: 30.00 ft Total Volume: 0.421 bbl

Num Fluid Samples: 0

Num Gas Bombs: 0

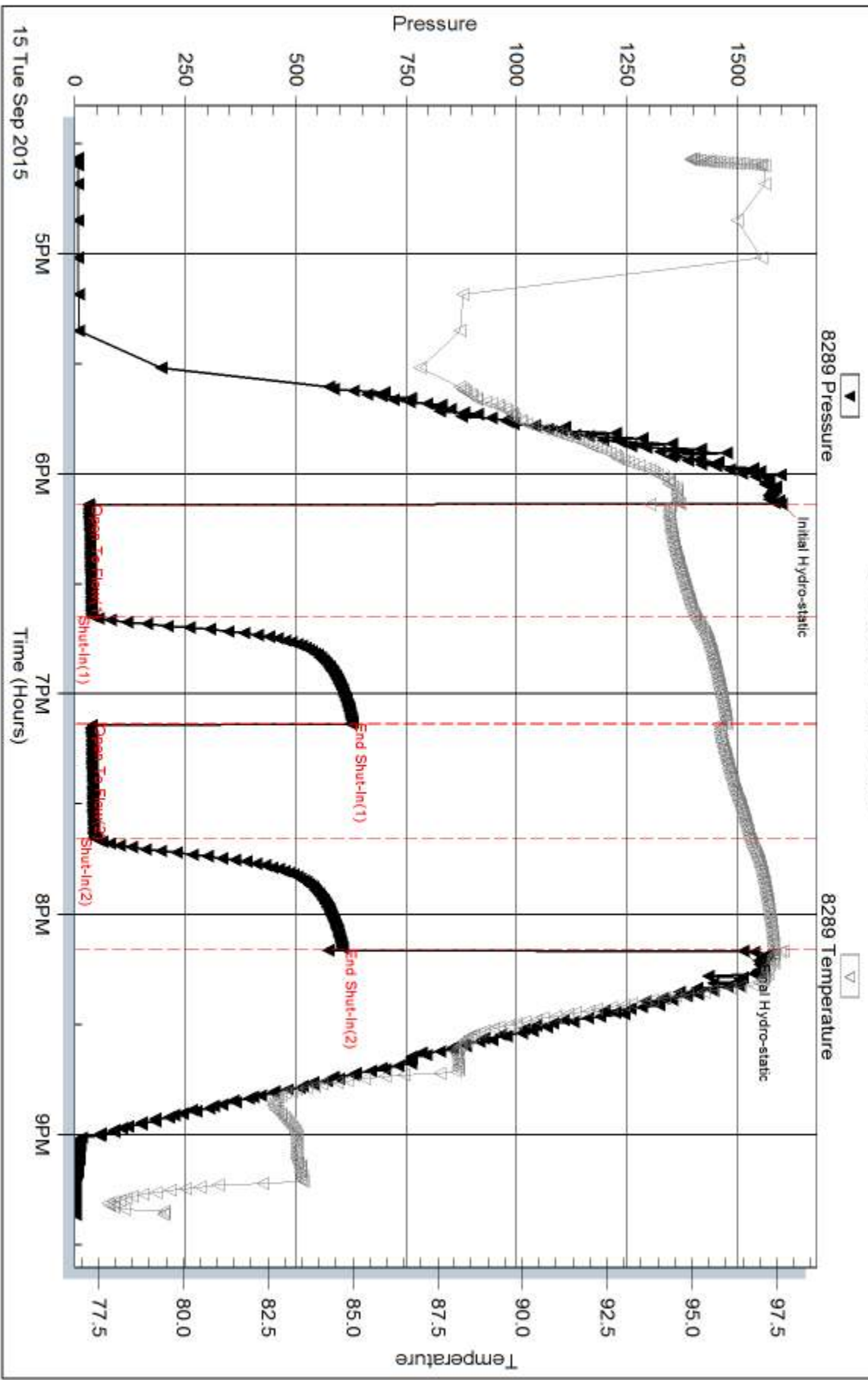
Serial #:

Laboratory Name:

Laboratory Location:

Recovery Comments:

Pressure vs. Time



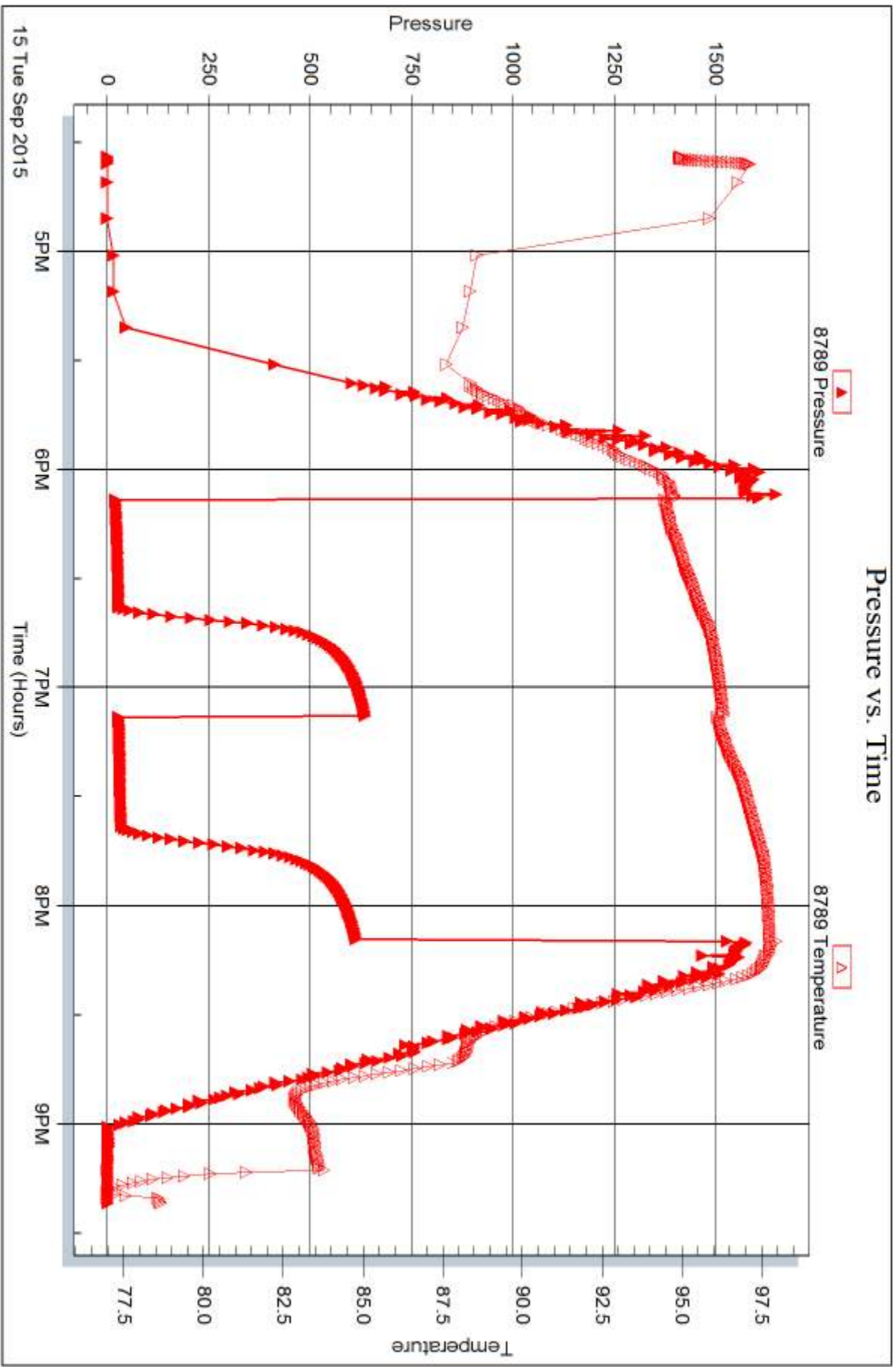
Serial #: 8789

Inside

American Land And Energy LLC

Vonfeldt #1

DST Test Number: 2



Trilobite Testing, Inc

Ref. No: 61660

Printed: 2015.09.17 @ 09:48:03



DRILL STEM TEST REPORT

Prepared For: **American Land And Energy LLC**

7277 Tenby Way
Castle Pines CO 80108

ATTN: Lyle Herrman

Vonfeldt #1

7-15s-16w Ellis,KS

Start Date: 2015.09.16 @ 16:25:00

End Date: 2015.09.16 @ 22:46:00

Job Ticket #: 61661 DST #: 3

Trilobite Testing, Inc
1515 Commerce Parkway Hays, KS 67601
ph: 785-625-4778 fax: 785-625-5620

Printed: 2015.09.17 @ 09:47:41



TRILOBITE TESTING, INC

DRILL STEM TEST REPORT

American Land And Energy LLC

7-15s-16w Ellis,KS

7277 Tenby Way
Castle Pines CO 80108

Vonfeldt #1

Job Ticket: 61661

DST#: 3

ATTN: Lyle Herrman

Test Start: 2015.09.16 @ 16:25:00

GENERAL INFORMATION:

Formation: **Arbuckle**

Deviated: No Whipstock: ft (KB)

Time Tool Opened: 17:54:45

Time Test Ended: 22:46:00

Test Type: Conventional Bottom Hole (Reset)

Tester: Jim Svaty

Unit No: 76

Interval: 3382.00 ft (KB) To 3480.00 ft (KB) (TVD)

Reference Elevations: 1890.00 ft (KB)

Total Depth: 3480.00 ft (KB) (TVD)

1884.00 ft (CF)

Hole Diameter: 7.88 inches Hole Condition: Fair

KB to GR/CF: 6.00 ft

Serial #: 8289 Outside

Press@RunDepth: 298.67 psig @ 3383.00 ft (KB)

Capacity: 8000.00 psig

Start Date: 2015.09.16

End Date: 2015.09.16

Last Calib.: 2015.09.16

Start Time: 16:25:02

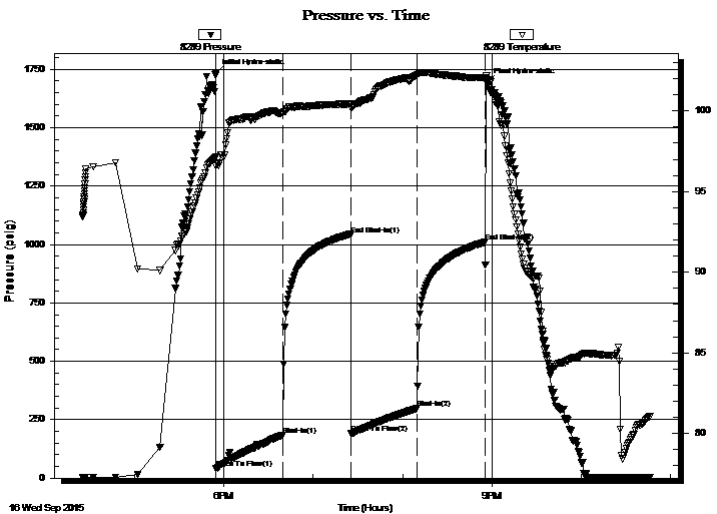
End Time: 22:46:15

Time On Btm: 2015.09.16 @ 17:54:30

Time Off Btm: 2015.09.16 @ 20:56:30

TEST COMMENT: 45-IF- BOB in 9 min.
45-ISI- No Blow
45-FF- BOB in 14 min.
45-FSI- No Blow

PRESSURE SUMMARY



Time (Min.)	Pressure (psig)	Temp (deg F)	Annotation
0	1732.45	97.14	Initial Hydro-static
1	41.17	96.60	Open To Flow (1)
45	183.46	99.82	Shut-In(1)
91	1041.96	100.44	End Shut-In(1)
91	190.00	100.22	Open To Flow (2)
136	298.67	102.21	Shut-In(2)
181	1009.92	102.05	End Shut-In(2)
182	1692.55	102.20	Final Hydro-static

Recovery

Length (ft)	Description	Volume (bbl)
189.00	OSMCW 20%m 80%w	2.65
252.00	OSMCW 50%m 50%w	3.53
159.00	OSWCM 5%w 95%m	2.23

Gas Rates

	Choke (inches)	Pressure (psig)	Gas Rate (Mcf/d)

* Recovery from multiple tests



**TRILOBITE
TESTING, INC**

DRILL STEM TEST REPORT

TOOL DIAGRAM

American Land And Energy LLC

7-15s-16w Ellis,KS

7277 Tenby Way
Castle Pines CO 80108

Vonfeldt #1

Job Ticket: 61661

DST#: 3

ATTN: Lyle Herrman

Test Start: 2015.09.16 @ 16:25:00

Tool Information

Drill Pipe:	Length: 3385.00 ft	Diameter: 3.80 inches	Volume: 47.48 bbl	Tool Weight:	2500.00 lb
Heavy Wt. Pipe:	Length: 0.00 ft	Diameter: 2.75 inches	Volume: 0.00 bbl	Weight set on Packer:	25000.00 lb
Drill Collar:	Length: 0.00 ft	Diameter: 2.25 inches	Volume: 0.00 bbl	Weight to Pull Loose:	50000.00 lb
			<u>Total Volume: 47.48 bbl</u>	Tool Chased	0.00 ft
Drill Pipe Above KB:	24.00 ft			String Weight: Initial	45000.00 lb
Depth to Top Packer:	3382.00 ft			Final	47000.00 lb
Depth to Bottom Packer:	ft				
Interval between Packers:	98.00 ft				
Tool Length:	119.00 ft				
Number of Packers:	2	Diameter: 6.75 inches			
Tool Comments:					

Tool Description

Tool Description	Length (ft)	Serial No.	Position	Depth (ft)	Accum. Lengths
Change Over Sub	1.00			3362.00	
Shut In Tool	5.00			3367.00	
Hydraulic tool	5.00			3372.00	
Packer	5.00			3377.00	21.00 Bottom Of Top Packer
Packer	5.00			3382.00	
Stubb	1.00			3383.00	
Recorder	0.00	8789	Inside	3383.00	
Recorder	0.00	8289	Outside	3383.00	
Perforations	29.00			3412.00	
Change Over Sub	1.00			3413.00	
Blank Spacing	63.00			3476.00	
Change Over Sub	1.00			3477.00	
Bullnose	3.00			3480.00	98.00 Bottom Packers & Anchor

Total Tool Length: 119.00



**TRILOBITE
TESTING, INC**

DRILL STEM TEST REPORT

FLUID SUMMARY

American Land And Energy LLC

7-15s-16w Ellis,KS

7277 Tenby Way
Castle Pines CO 80108

Vonfeldt #1

Job Ticket: 61661

DST#: 3

ATTN: Lyle Herrman

Test Start: 2015.09.16 @ 16:25:00

Mud and Cushion Information

Mud Type: Gel Chem

Cushion Type:

Oil API:

deg API

Mud Weight: 9.00 lb/gal

Cushion Length:

ft

Water Salinity:

30000 ppm

Viscosity: 56.00 sec/qt

Cushion Volume:

bbbl

Water Loss: 7.98 in³

Gas Cushion Type:

Resistivity: ohm.m

Gas Cushion Pressure:

psig

Salinity: 5000.00 ppm

Filter Cake: 1.50 inches

Recovery Information

Recovery Table

Length ft	Description	Volume bbl
189.00	OSMCW 20%m 80%w	2.651
252.00	OSMCW 50%m 50%w	3.535
159.00	OSWCM 5%w 95%m	2.230

Total Length: 600.00 ft Total Volume: 8.416 bbl

Num Fluid Samples: 0

Num Gas Bombs: 0

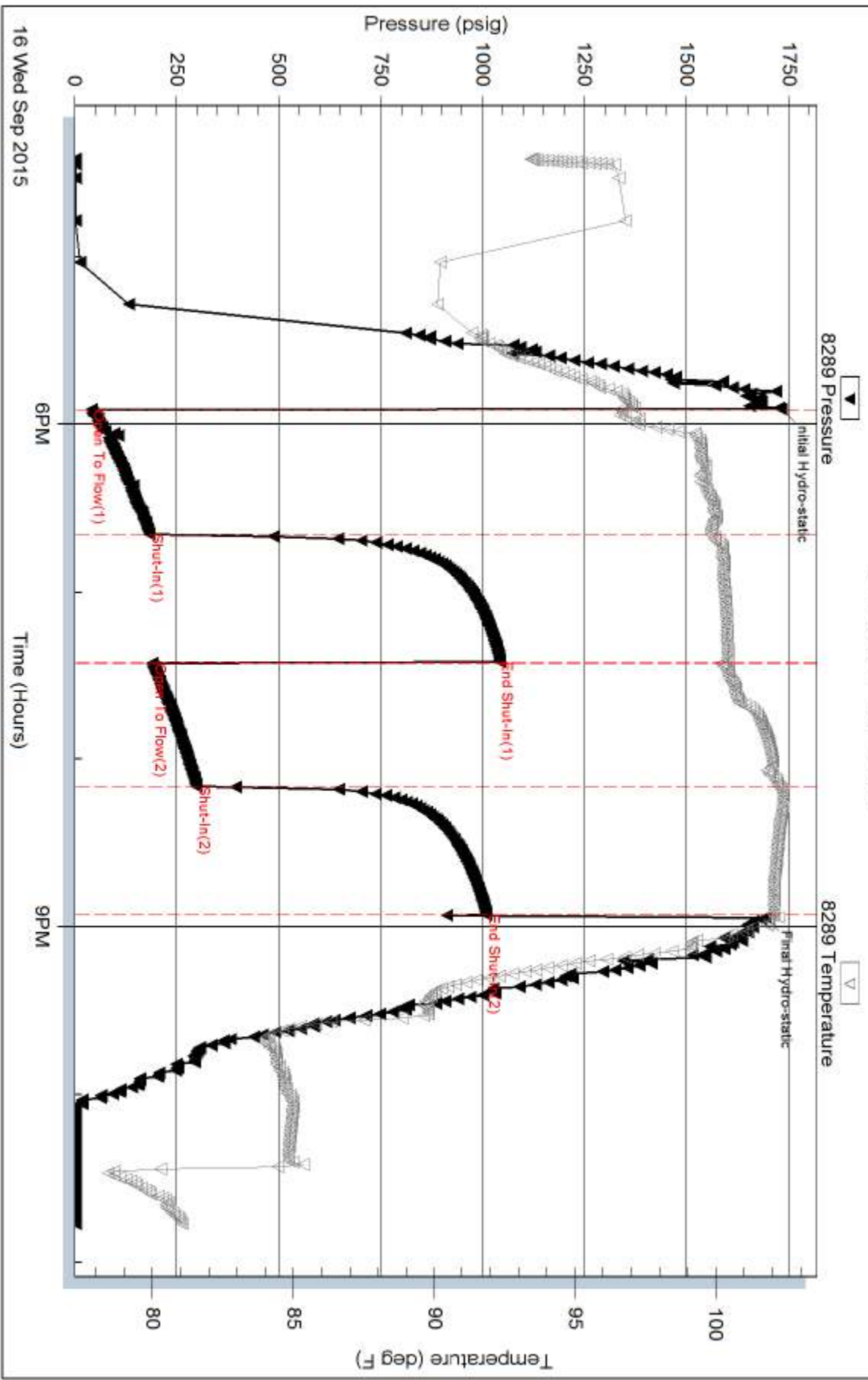
Serial #:

Laboratory Name:

Laboratory Location:

Recovery Comments: .190 @ 85

Pressure vs. Time



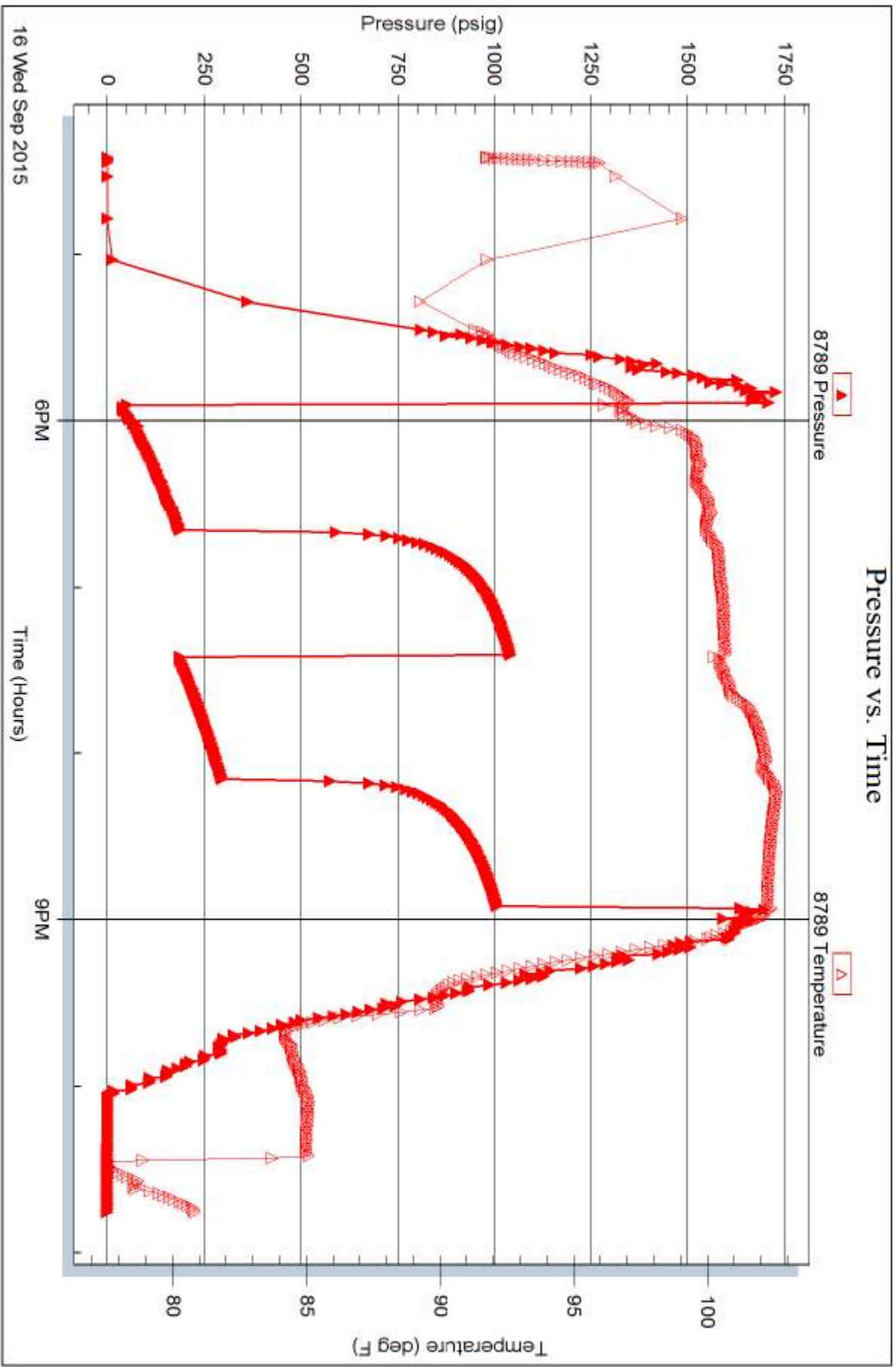
Serial #: 8789

Inside

American Land And Energy LLC

Vonfeldt #1

DST Test Number: 3



Trilobite Testing, Inc

Ref. No: 61661

Printed: 2015.09.17 @ 09:47:42



TRILOBITE TESTING INC.

1515 Commerce Parkway • Hays, Kansas 67601

Test Ticket

NO. 61659

Well Name & No. Vonfeldt #1 Test No. 1 Date 9-14-15
 Company American Land and Energy LLC Elevation 1890 KB 1884 GL
 Address 7277 Tenby Way Castle Pines Co. 80108
 Co. Rep / Geo. Lyle Herrman Rig Royal #1
 Location: Sec. 7 Twp. 15 S Rge. 16 W Co. Ellis State KS

Interval Tested 3154-3211 Zone Tested LKC "A-C"
 Anchor Length 57 Drill Pipe Run 3163 Mud Wt. 8.9
 Top Packer Depth 3149 Drill Collars Run 0 Vis 55
 Bottom Packer Depth 3154 Wt. Pipe Run 0 WL 8.4
 Total Depth 3211 Chlorides 2000 ppm System LCM 1

Blow Description IF - Surface Blow Building to 5 1/2 in.
ISI - No Blow
FF - Surface Blow in 4 min. Building to 3 1/4 in.
FSI - No Blow

Rec	Feet of	%gas	%oil	%water	%mud
<u>93</u>	<u>WCM</u>		<u>35</u>	<u>65</u>	
	<u>Show of Oil in Tool</u>				

Rec Total 93 BHT 99 Gravity 1050 API RW 265 @ 73 ° F Chlorides 24500 ppm

(A) Initial Hydrostatic 1557 Test 1050 T-On Location 21:17
 (B) First Initial Flow 21 Jars _____ T-Started 00:15
 (C) First Final Flow 38 Safety Joint _____ T-Open 03:14
 (D) Initial Shut-In 610 Circ Sub _____ T-Pulled 06:14
 (E) Second Initial Flow 43 Hourly Standby _____ T-Out 08:03
 (F) Second Final Flow 59 Mileage 28 RT ³² Comments _____
 (G) Final Shut-In 599 Sampler _____
 (H) Final Hydrostatic 1496 Straddle _____ Ruined Shale Packer _____
 Initial Open 45 Shale Packer _____ Ruined Packer _____
 Initial Shut-In 45 Extra Packer _____ Extra Copies _____
 Final Flow 45 Extra Recorder _____ Sub Total 0
 Final Shut-In 45 Day Standby _____ Total 1082
 Accessibility _____ MP/DST Disc't _____
 Sub Total 1082

Approved By _____ Our Representative [Signature]
 TriLOBITE TESTING Inc. shall not be liable for damaged of any kind of the property or personnel of the one for whom a test is made, or for any loss suffered or sustained, directly or indirectly, through the use of its equipment, or its statements or opinion concerning the results of any test, tools lost or damaged in the hole shall be paid for at cost by the party for whom the test is made.



TRILOBITE TESTING INC.

1515 Commerce Parkway • Hays, Kansas 67601

Test Ticket

NO. 61660

Well Name & No. Vonfeldt #1 Test No. 2 Date 9-15-15
 Company American Land And Energy LLC Elevation 1890 KB 1884 GL
 Address 2277 Tenby Way Castle Pines CO. 80108
 Co. Rep / Geo. Lyle Herrman Rig Royal #1
 Location: Sec. 7 Twp. 15^s Rge. 16^w Co. Ellis State KS

Interval Tested 3231-3280 Zone Tested LKC "F&A"
 Anchor Length 49 Drill Pipe Run 3225 Mud Wt. 9.1
 Top Packer Depth 3226 Drill Collars Run 0 Vis 51
 Bottom Packer Depth 3231 Wt. Pipe Run 0 WL 8.8
 Total Depth 3280 Chlorides 3300 ppm System LCM 1

Blow Description IF - Surface Blow Building to 1/2 in. IN 10 min.
ISI - No Blow
FF - Surface Blow in 17 min.
FSE - No Blow

Rec	Feet of	%gas	%oil	%water	%mud
<u>30</u>	<u>mud</u>			<u>100</u>	
	<u>Show of Oil in Tool</u>				

Rec Total 30 BHT 97 Gravity 1050 API RW @ ° F Chlorides ppm

(A) Initial Hydrostatic <u>1599</u>	<input checked="" type="checkbox"/> Test	T-On Location <u>15:58</u>
(B) First Initial Flow <u>31</u>	<input type="checkbox"/> Jars	T-Started <u>16:34</u>
(C) First Final Flow <u>41</u>	<input type="checkbox"/> Safety Joint	T-Open <u>18:08</u>
(D) Initial Shut-In <u>628</u>	<input type="checkbox"/> Circ Sub	T-Pulled <u>20:08</u>
(E) Second Initial Flow <u>39</u>	<input type="checkbox"/> Hourly Standby	T-Out <u>21:22</u>
(F) Second Final Flow <u>45</u>	<input checked="" type="checkbox"/> Mileage <u>32</u>	Comments
(G) Final Shut-In <u>606</u>	<input type="checkbox"/> Sampler	
(H) Final Hydrostatic <u>1513</u>	<input type="checkbox"/> Straddle	<input type="checkbox"/> Ruined Shale Packer
Initial Open <u>30</u>	<input type="checkbox"/> Shale Packer	<input type="checkbox"/> Ruined Packer
Initial Shut-In <u>30</u>	<input type="checkbox"/> Extra Packer	<input type="checkbox"/> Extra Copies
Final Flow <u>30</u>	<input type="checkbox"/> Extra Recorder	Sub Total <u>0</u>
Final Shut-In <u>30</u>	<input type="checkbox"/> Day Standby	Total <u>1082</u>
	<input type="checkbox"/> Accessibility	MP/DST Disc't
	Sub Total <u>1082</u>	

Approved By _____ Our Representative [Signature]
 TriLOBITE TESTING Inc. shall not be liable for damaged of any kind of the property or personnel of the one for whom a test is made, or for any loss suffered or sustained, directly or indirectly, through the use of its equipment, or its statements or opinion concerning the results of any test, tools lost or damaged in the hole shall be paid for at cost by the party for whom the test is made.



TRILOBITE TESTING INC.

1515 Commerce Parkway • Hays, Kansas 67601

Test Ticket

NO. 61661

Well Name & No. Vonfeldt #1 Test No. 3 Date 9-16-15
 Company American Land and Energy LLC Elevation 1890 KB 1884 GL
 Address 7277 Tenby Way Castle Pines CO 80108
 Co. Rep / Geo. Lyle Herriman Rig Royal #1
 Location: Sec. 7 Twp. 15^s Rge. 16^w Co. Ellis State KS

Interval Tested 3382-3480 Zone Tested Arbuckle
 Anchor Length 98 Drill Pipe Run 3385 Mud Wt. 9
 Top Packer Depth 3377 Drill Collars Run 0 Vis 56
 Bottom Packer Depth 3382 Wt. Pipe Run 0 WL 8
 Total Depth 3480 Chlorides 5000 ppm System LCM 1.5

Blow Description IF - BOB in 9 min.
ISI - No Blow
FF - BOB in 14 min.
FSI - No Blow

Rec	Feet of	%gas	%oil	%water	%mud
<u>189</u>	<u>Oil Speck MCW</u>		<u>80</u>	<u>20</u>	
<u>252</u>	<u>Oil Speck MCW</u>		<u>50</u>	<u>50</u>	
<u>159</u>	<u>Oil Speck WCM</u>		<u>5</u>	<u>95</u>	
Rec	Feet of	%gas	%oil	%water	%mud
Rec	Feet of	%gas	%oil	%water	%mud

Rec Total 600 BHT 102 Gravity _____ API RW 190 @ 85 ° F Chlorides 30000 ppm

(A) Initial Hydrostatic 1732 Test 1050 T-On Location 15:56
 (B) First Initial Flow 41 Jars _____ T-Started 16:25
 (C) First Final Flow 183 Safety Joint _____ T-Open 17:55
 (D) Initial Shut-In 1041 Circ Sub _____ T-Pulled 20:55
 (E) Second Initial Flow 190 Hourly Standby _____ T-Out 22:46
 (F) Second Final Flow 298 Mileage 32 Comments _____
 (G) Final Shut-In 1009 Sampler _____
 (H) Final Hydrostatic 1692 Straddle _____

Initial Open 45 Shale Packer _____ Ruined Shale Packer _____
 Initial Shut-In 45 Extra Packer _____ Ruined Packer _____
 Final Flow 45 Extra Recorder _____ Extra Copies _____
 Final Shut-In 45 Day Standby _____ Sub Total 0
 Accessibility _____ Total 1082
 Sub Total 1082 MP/DST Disc't _____

Approved By _____ Our Representative [Signature]

TriLOBite Testing Inc. shall not be liable for damaged of any kind of the property or personnel of the one for whom a test is made, or for any loss suffered or sustained, directly or indirectly, through the use of its equipment, or its statements or opinion concerning the results of any test, tools lost or damaged in the hole shall be paid for at cost by the party for whom the test is made.