



TRILOBITE TESTING, INC.

DRILL STEM TEST REPORT

Concorde Resources, Corp.

S22-15s-34w Logan/KS

111 S. Main St.
Eufaula, OK 74432

McDaniels #1-22

Job Ticket: 61713

DST#: 1

ATTN: Anthony Luna

Test Start: 2015.09.09 @ 18:08:00

GENERAL INFORMATION:

Formation: **Marmaton-Altamont**

Deviated: No Whipstock: ft (KB)

Time Tool Opened: 20:57:00

Time Test Ended: 00:32:30

Test Type: Conventional Bottom Hole (Initial)

Tester: Chuck Smith

Unit No: 61

Interval: **4330.00 ft (KB) To 4392.00 ft (KB) (TVD)**

Reference Elevations: 3019.00 ft (KB)

Total Depth: 4392.00 ft (KB) (TVD)

3014.00 ft (CF)

Hole Diameter: 7.88 inches Hole Condition: Good

KB to GR/CF: 5.00 ft

Serial #: 8357

Inside

Press@RunDepth: 34.45 psig @ 4332.00 ft (KB)

Capacity: 8000.00 psig

Start Date: 2015.09.09

End Date: 2015.09.10

Last Calib.: 2015.09.10

Start Time: 18:08:02

End Time: 00:32:30

Time On Btm: 2015.09.09 @ 20:55:30

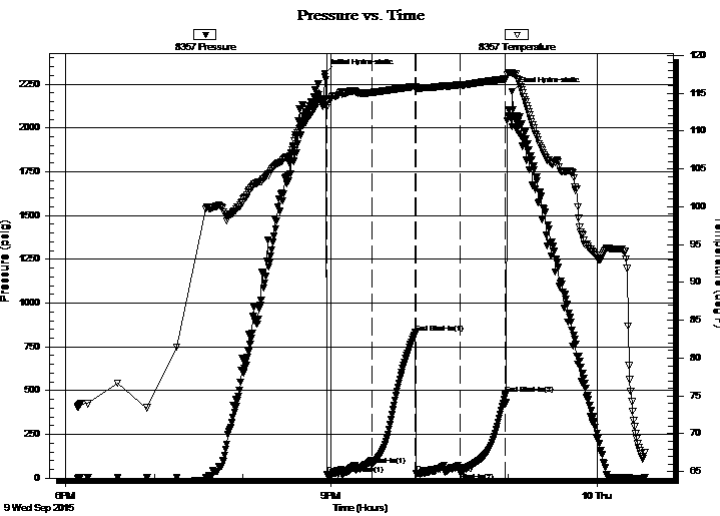
Time Off Btm: 2015.09.09 @ 23:02:30

TEST COMMENT: 30- 1/2" Blow throughout. Hit a weak bridge on the way down n.

30- No return.

30- No blow .

30- No return.



PRESSURE SUMMARY

Time (Min.)	Pressure (psig)	Temp (deg F)	Annotation
0	2312.33	114.26	Initial Hydro-static
2	20.99	113.06	Open To Flow (1)
32	73.76	115.08	Shut-In(1)
62	831.01	115.90	End Shut-In(1)
62	26.10	115.63	Open To Flow (2)
92	34.45	116.11	Shut-In(2)
123	478.97	116.91	End Shut-In(2)
127	2208.22	117.75	Final Hydro-static

Recovery

Length (ft)	Description	Volume (bbl)
45.00	M 100m With a spot of oil.	0.22

Gas Rates

	Choke (inches)	Pressure (psig)	Gas Rate (Mcf/d)



**TRILOBITE
TESTING, INC**

DRILL STEM TEST REPORT

FLUID SUMMARY

Concorde Resources, Corp.

S22-15s-34w Logan/KS

111 S. Main St.
Eufaula, OK 74432

McDaniels #1-22

Job Ticket: 61713

DST#: 1

ATTN: Anthony Luna

Test Start: 2015.09.09 @ 18:08:00

Mud and Cushion Information

Mud Type: Gel Chem

Cushion Type:

Oil API:

deg API

Mud Weight: 9.00 lb/gal

Cushion Length:

ft

Water Salinity:

ppm

Viscosity: 58.00 sec/qt

Cushion Volume:

bbbl

Water Loss: 9.58 in³

Gas Cushion Type:

Resistivity: ohm.m

Gas Cushion Pressure:

psig

Salinity: 11000.00 ppm

Filter Cake: 1.00 inches

Recovery Information

Recovery Table

Length ft	Description	Volume bbl
45.00	M 100m With a spot of oil.	0.221

Total Length: 45.00 ft Total Volume: 0.221 bbl

Num Fluid Samples: 0

Num Gas Bombs: 0

Serial #:

Laboratory Name:

Laboratory Location:

Recovery Comments:

Pressure vs. Time

