



**TRILOBITE
TESTING, INC**

DRILL STEM TEST REPORT

Culbreath Oil & Gas

3-5S-35W Rawlins KS

3501 S. Yale Ave
Tulsa Ok 74135

Tom/Kelly Dewey #1-3

ATTN: Anthony Luna

Job Ticket: 62772

DST#: 4

Test Start: 2015.08.27 @ 06:31:00

GENERAL INFORMATION:

Formation: **Pawnee**

Deviated: No Whipstock: ft (KB)

Time Tool Opened: 08:47:00

Time Test Ended: 12:30:00

Test Type: Conventional Bottom Hole (Reset)

Tester: Ryan Nichols

Unit No: 78

Interval: 4400.00 ft (KB) To 4434.00 ft (KB) (TVD)

Reference Elevations: 3150.00 ft (KB)

Total Depth: 4434.00 ft (KB) (TVD)

3145.00 ft (CF)

Hole Diameter: 7.88 inches Hole Condition: Good

KB to GR/CF: 5.00 ft

Serial #: 6752 Inside

Press@RunDepth: 20.02 psig @ 4401.00 ft (KB)

Capacity: 8000.00 psig

Start Date: 2015.08.27 End Date: 2015.08.27

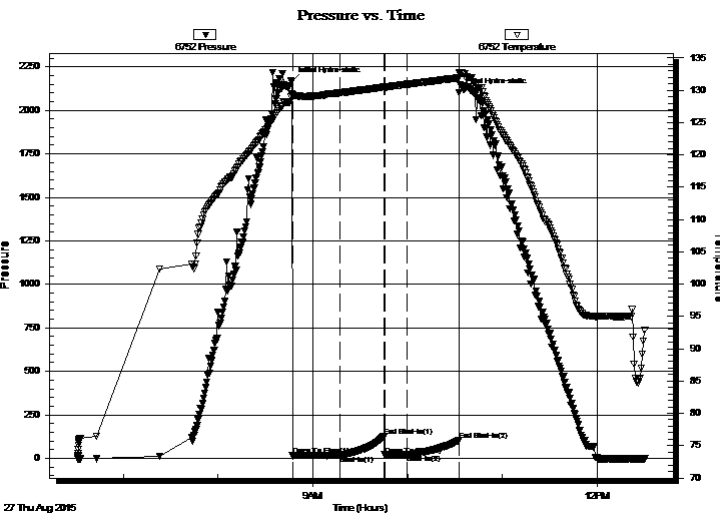
Last Calib.: 2015.08.27

Start Time: 06:31:01 End Time: 12:30:00

Time On Btm: 2015.08.27 @ 08:46:40

Time Off Btm: 2015.08.27 @ 10:32:40

TEST COMMENT: 30 IF - Surface blow , flused tool at 20 mins, surface blow
30 ISI - No return
15 FF - No blow
30 FSI - No return



PRESSURE SUMMARY

Time (Min.)	Pressure (psig)	Temp (deg F)	Annotation
0	2165.29	129.53	Initial Hydro-static
1	15.11	129.18	Open To Flow (1)
31	17.74	129.60	Shut-In(1)
59	126.68	130.51	End Shut-In(1)
59	20.05	130.49	Open To Flow (2)
73	20.02	130.93	Shut-In(2)
106	101.76	131.94	End Shut-In(2)
106	2104.04	132.74	Final Hydro-static

Recovery

Length (ft)	Description	Volume (bbl)
5.00	OCM - 15%o - 85%M	0.02

* Recovery from multiple tests

Gas Rates

	Choke (inches)	Pressure (psig)	Gas Rate (Mcf/d)



**TRILOBITE
TESTING, INC**

DRILL STEM TEST REPORT

FLUID SUMMARY

Culbreath Oil & Gas

3-5S-35W Rawlins KS

3501 S. Yale Ave
Tulsa Ok 74135

Tom/Kelly Dewey #1-3

Job Ticket: 62772

DST#: 4

ATTN: Anthony Luna

Test Start: 2015.08.27 @ 06:31:00

Mud and Cushion Information

Mud Type: Gel Chem

Cushion Type:

Oil API:

deg API

Mud Weight: 9.00 lb/gal

Cushion Length:

ft

Water Salinity:

ppm

Viscosity: 52.00 sec/qt

Cushion Volume:

bbbl

Water Loss: 7.99 in³

Gas Cushion Type:

Resistivity: ohm.m

Gas Cushion Pressure:

psig

Salinity: 500.00 ppm

Filter Cake: 1.00 inches

Recovery Information

Recovery Table

Length ft	Description	Volume bbl
5.00	OCM - 15%o - 85%M	0.025

Total Length: 5.00 ft Total Volume: 0.025 bbl

Num Fluid Samples: 0

Num Gas Bombs: 0

Serial #:

Laboratory Name:

Laboratory Location:

Recovery Comments:

Serial #: 6752

Inside

Culbreath Oil & Gas

Tom/Kelly Dew ey #1-3

DST Test Number: 4

