



# TEMPORARY ABANDONMENT WELL APPLICATION

OPERATOR: License# \_\_\_\_\_  
 Name: \_\_\_\_\_  
 Address 1: \_\_\_\_\_  
 Address 2: \_\_\_\_\_  
 City: \_\_\_\_\_ State: \_\_\_\_\_ Zip: \_\_\_\_\_ + \_\_\_\_\_  
 Contact Person: \_\_\_\_\_  
 Phone: (\_\_\_\_) \_\_\_\_\_  
 Contact Person Email: \_\_\_\_\_  
 Field Contact Person: \_\_\_\_\_  
 Field Contact Person Phone: (\_\_\_\_) \_\_\_\_\_

API No. 15- \_\_\_\_\_  
 Spot Description: \_\_\_\_\_  
 \_\_\_\_\_ - \_\_\_\_\_ - \_\_\_\_\_ - \_\_\_\_\_ Sec. \_\_\_\_\_ Twp. \_\_\_\_\_ S. R. \_\_\_\_\_  E  W  
 \_\_\_\_\_ feet from  N /  S Line of Section  
 \_\_\_\_\_ feet from  E /  W Line of Section  
 GPS Location: Lat: \_\_\_\_\_, Long: \_\_\_\_\_  
(e.g. xx.xxxxx) (e.g. -xxx.xxxxx)  
 Datum:  NAD27  NAD83  WGS84  
 County: \_\_\_\_\_ Elevation: \_\_\_\_\_  GL  KB  
 Lease Name: \_\_\_\_\_ Well #: \_\_\_\_\_  
 Well Type: (check one)  Oil  Gas  OG  WSW  Other: \_\_\_\_\_  
 SWD Permit #: \_\_\_\_\_  ENHR Permit #: \_\_\_\_\_  
 Gas Storage Permit #: \_\_\_\_\_  
 Spud Date: \_\_\_\_\_ Date Shut-In: \_\_\_\_\_

	Conductor	Surface	Production	Intermediate	Liner	Tubing
Size						
Setting Depth						
Amount of Cement						
Top of Cement						
Bottom of Cement						

Casing Fluid Level from Surface: \_\_\_\_\_ How Determined? \_\_\_\_\_ Date: \_\_\_\_\_

Casing Squeeze(s): \_\_\_\_\_ to \_\_\_\_\_ w / \_\_\_\_\_ sacks of cement, \_\_\_\_\_ to \_\_\_\_\_ w / \_\_\_\_\_ sacks of cement. Date: \_\_\_\_\_  
(top) (bottom) (top) (bottom)

Do you have a valid Oil & Gas Lease?  Yes  No

Depth and Type:  Junk in Hole at \_\_\_\_\_  Tools in Hole at \_\_\_\_\_ Casing Leaks:  Yes  No Depth of casing leak(s): \_\_\_\_\_  
(depth) (depth)

Type Completion:  ALT. I  ALT. II Depth of:  DV Tool: \_\_\_\_\_ w / \_\_\_\_\_ sacks of cement  Port Collar: \_\_\_\_\_ w / \_\_\_\_\_ sack of cement  
(depth) (depth)

Packer Type: \_\_\_\_\_ Size: \_\_\_\_\_ Inch Set at: \_\_\_\_\_ Feet

Total Depth: \_\_\_\_\_ Plug Back Depth: \_\_\_\_\_ Plug Back Method: \_\_\_\_\_

**Geological Data:**

Formation Name	Formation Top	Formation Base	Completion Information
1. _____	At: _____	to _____ Feet	Perforation Interval _____ to _____ Feet or Open Hole Interval _____ to _____ Feet
2. _____	At: _____	to _____ Feet	Perforation Interval _____ to _____ Feet or Open Hole Interval _____ to _____ Feet

UNDER PENALTY OF PERJURY I HEREBY ATTEST THAT THE INFORMATION CONTAINED HEREIN IS TRUE AND CORRECT TO THE BEST OF MY KNOWLEDGE

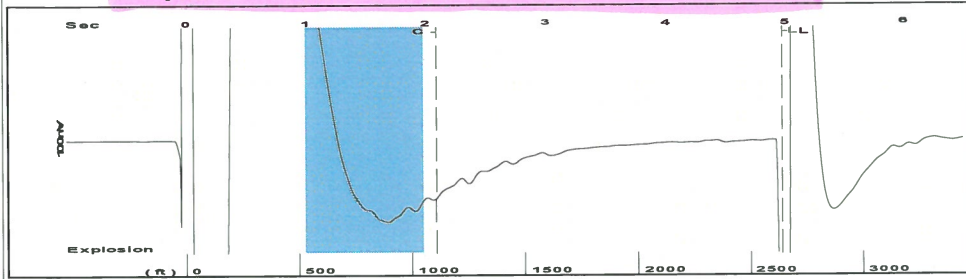
Submitted Electronically

<b>Do NOT Write in This Space - KCC USE ONLY</b>	Date Tested: _____	Results: _____	Date Plugged: _____	Date Repaired: _____	Date Put Back in Service: _____
	Review Completed by: _____ Comments: _____				
TA Approved: <input type="checkbox"/> Yes <input type="checkbox"/> Denied Date: _____					

**Mail to the Appropriate KCC Conservation Office:**

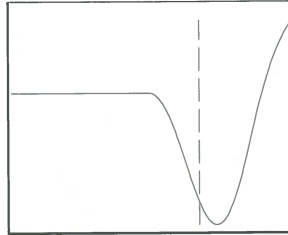
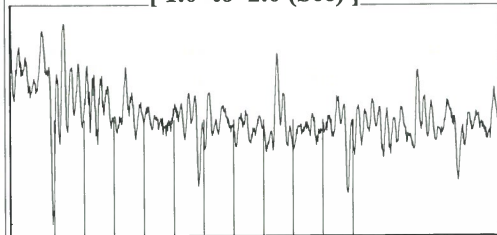
	KCC District Office #1 - 210 E. Frontview, Suite A, Dodge City, KS 67801	Phone 620.225.8888
	KCC District Office #2 / UPGS - 3450 N. Rock Road, Building 600, Suite 601, Wichita, KS 67226	Phone 316.630.4000
	KCC District Office #3 - 1500 SW Seventh Steet, Chanute, KS 66720	Phone 620.432.2300
	KCC District Office #4 - 2301 E. 13th Street, Hays, KS 67601-2651	Phone 785.625.0550

Group: TAD WELLS Well: ENTERPRISES A-3 (acquired on: 11/04/15 11:54:56)



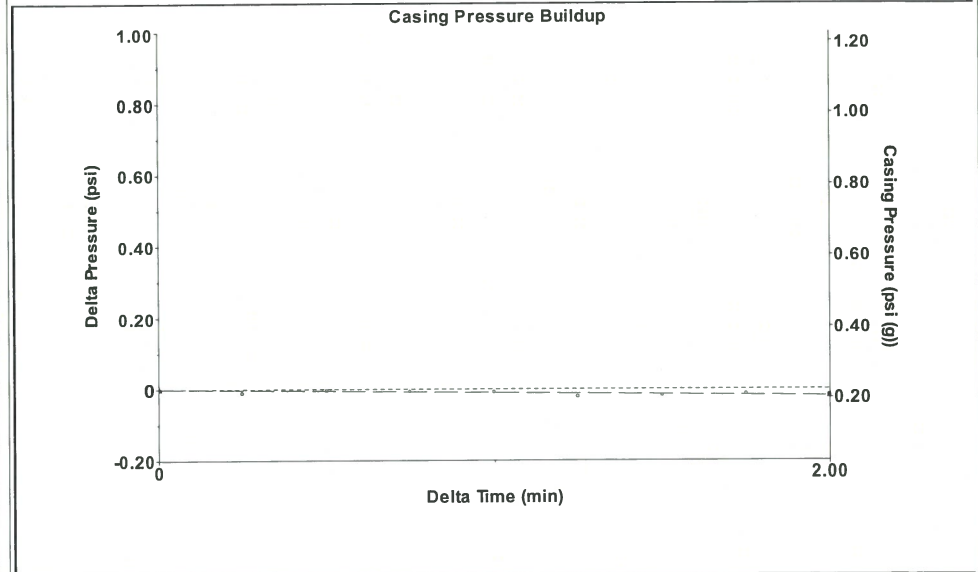
Filter Type High Pass Automatic Collar Count Yes Time 4.985 sec  
 Manual Acoustic Velo 1035.95 ft/s Manual JTS/sec 16.3399 Joints 83.3249 Jts  
 Depth 2641.40 ft

[ 1.0 to 2.0 (Sec) ]



Analysis Method: Automatic

Group: TAD WELLS Well: ENTERPRISES A-3 (acquired on: 11/04/15 11:54:56)



Change in Pressure -0.02 psi PT10411  
 Range 0 - ? psi  
 Change in Time 2.00 min

Group: TAD WELLS Well: ENTERPRISES A-3 (acquired on: 11/04/15 11:54:56)

<b>Production</b>			<b>Casing Pressure</b>
Current	Potential		0.2 psi (g)
Oil - * -	- * - BBL/D		Casing Pressure Buildup
Water - * -	- * - BBL/D		-0.0 psi
Gas - * -	- * - Mscf/D		2.00 min
			Gas/Liquid Interface Pressure
IPR Method	Vogel		1.5 psi (g)
PBHP/SBHP	- * -		Liquid Level Depth
Production Efficiency	0.0		2641.40 ft
Oil 40 deg.API			Pump Intake Depth
Water 1.05 Sp.Gr.H2O			4628.00 ft
Gas 0.92 Sp.Gr.AIR			Formation Depth
			4628.00 ft
Acoustic Velocity	1059.74 ft/s		



**Producing**

Annular Gas Flow 0 Mscf/D

% Liquid 100 %

**Pump Intake**

664.6 psi (g)

**Producing BHP**

664.6 psi (g)

**Static BHP**

- \* - psi (g)

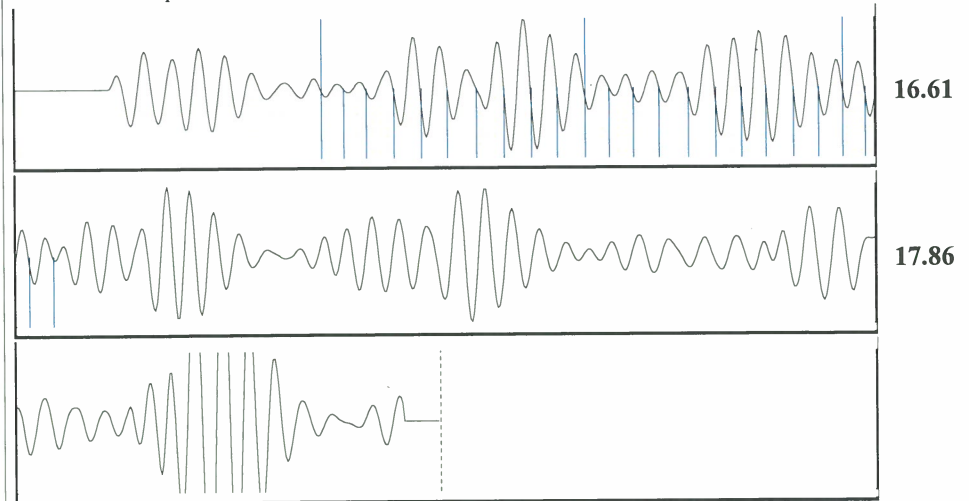
Formation Submergence

Total Gaseous Liquid Column HT (TVD) 1987 ft

Equivalent Gas Free Liquid HT (TVD) 1987 ft

Acoustic Test

Group: TAD WELLS Well: ENTERPRISES A-3 (acquired on: 11/04/15 11:54:56)



Acoustic Velocity	1059.74 ft/s	Joints counted	23
Joints Per Second	16.7151 jts/sec	Joints to liquid level	83.3249
Depth to liquid level	2641.4 ft	Filter Width	14.3399 18.3399
Automatic Collar Count	Yes	Time to 1st Collar	0.712 2.088

Conservation Division  
District Office No. 1  
210 E. Frontview, Suite A  
Dodge City, KS 67801



Phone: 620-225-8888  
Fax: 620-225-8885  
<http://kcc.ks.gov/>

Shari Feist Albrecht, Chair  
Jay Scott Emler, Commissioner  
Pat Apple, Commissioner

Sam Brownback, Governor

November 17, 2015

Katheirne McClurkan  
Merit Energy Company, LLC  
13727 Noel Road, Suite 1200  
Dallas, TX 75240

Re: Temporary Abandonment  
API 15-081-22017-00-00  
Enterprises A 3  
NW/4 Sec.21-30S-32W  
Haskell County, Kansas

Dear Katheirne McClurkan:

"Your temporary abandonment (TA) application for the well listed above has been approved. In accordance with K.A.R. 82-3-111 the TA status of this well will expire 11/17/2016.

- \* If you return this well to service or plug it, please notify the District Office.
- \* If you sell this well you are required to file a Transfer of Operator form, T-1.
- \* If the well will remain temporarily abandoned, you must submit a new TA application, CP-111, before 11/17/2016.

You may contact me at the number above if you have questions.

Very truly yours,

Michael Maier"