



TEMPORARY ABANDONMENT WELL APPLICATION

OPERATOR: License# _____
 Name: _____
 Address 1: _____
 Address 2: _____
 City: _____ State: _____ Zip: _____ + _____
 Contact Person: _____
 Phone: (_____) _____
 Contact Person Email: _____
 Field Contact Person: _____
 Field Contact Person Phone: (_____) _____

API No. 15- _____
 Spot Description: _____
 _____ - _____ - _____ - _____ Sec. _____ Twp. _____ S. R. _____ E W
 _____ feet from N / S Line of Section
 _____ feet from E / W Line of Section
 GPS Location: Lat: _____, Long: _____
(e.g. xx.xxxxx) (e.g. -xxx.xxxxx)
 Datum: NAD27 NAD83 WGS84
 County: _____ Elevation: _____ GL KB
 Lease Name: _____ Well #: _____
 Well Type: (check one) Oil Gas OG WSW Other: _____
 SWD Permit #: _____ ENHR Permit #: _____
 Gas Storage Permit #: _____
 Spud Date: _____ Date Shut-In: _____

	Conductor	Surface	Production	Intermediate	Liner	Tubing
Size						
Setting Depth						
Amount of Cement						
Top of Cement						
Bottom of Cement						

Casing Fluid Level from Surface: _____ How Determined? _____ Date: _____

Casing Squeeze(s): _____ to _____ w / _____ sacks of cement, _____ to _____ w / _____ sacks of cement. Date: _____
(top) (bottom) (top) (bottom)

Do you have a valid Oil & Gas Lease? Yes No

Depth and Type: Junk in Hole at _____ Tools in Hole at _____ Casing Leaks: Yes No Depth of casing leak(s): _____
(depth) (depth)

Type Completion: ALT. I ALT. II Depth of: DV Tool: _____ w / _____ sacks of cement Port Collar: _____ w / _____ sack of cement
(depth) (depth)

Packer Type: _____ Size: _____ Inch Set at: _____ Feet

Total Depth: _____ Plug Back Depth: _____ Plug Back Method: _____

Geological Data:

Formation Name	Formation Top	Formation Base	Completion Information
1. _____	At: _____	to _____ Feet	Perforation Interval _____ to _____ Feet or Open Hole Interval _____ to _____ Feet
2. _____	At: _____	to _____ Feet	Perforation Interval _____ to _____ Feet or Open Hole Interval _____ to _____ Feet

~~UNDER PENALTY OF PERJURY I HEREBY ATTEST THAT THE INFORMATION CONTAINED HEREIN IS TRUE AND CORRECT TO THE BEST OF MY KNOWLEDGE~~

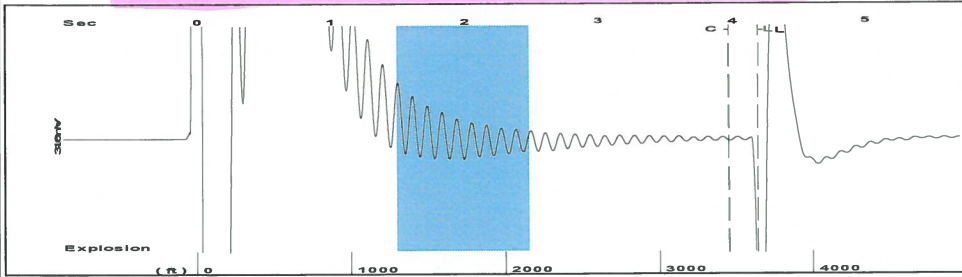
Submitted Electronically

Do NOT Write in This Space - KCC USE ONLY	Date Tested: _____	Results: _____	Date Plugged: _____	Date Repaired: _____	Date Put Back in Service: _____
	Review Completed by: _____ Comments: _____				
TA Approved: <input type="checkbox"/> Yes <input type="checkbox"/> Denied Date: _____					

Mail to the Appropriate KCC Conservation Office:

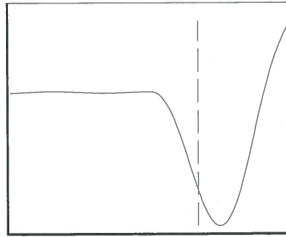
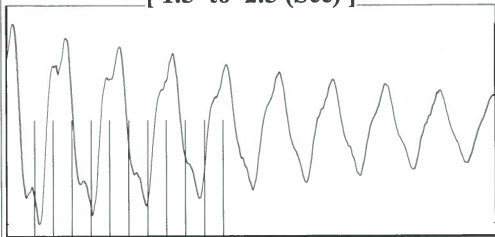
	KCC District Office #1 - 210 E. Frontview, Suite A, Dodge City, KS 67801	Phone 620.225.8888
	KCC District Office #2 / UPGS - 3450 N. Rock Road, Building 600, Suite 601, Wichita, KS 67226	Phone 316.630.4000
	KCC District Office #3 - 1500 SW Seventh Steet, Chanute, KS 66720	Phone 620.432.2300
	KCC District Office #4 - 2301 E. 13th Street, Hays, KS 67601-2651	Phone 785.625.0550

Group: TA'D WELLS Well: WIGGAINS 12-12 (acquired on: 10/21/15 12:55:08)



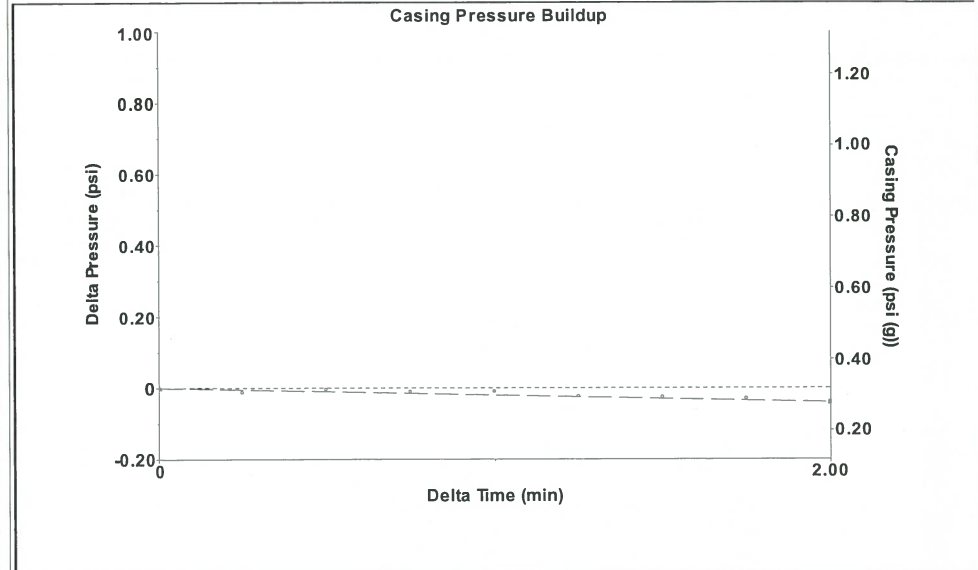
Filter Type	High Pass	Automatic Collar Count	Yes	Time	4.199 sec
Manual Acoustic Velo	1642.49 ft/s	Manual JTS/sec	25.9067	Joints	114.887 Jts
				Depth	3641.91 ft

[1.5 to 2.5 (Sec)]



Analysis Method: Automatic

Group: TA'D WELLS Well: WIGGAINS 12-12 (acquired on: 10/21/15 12:55:08)



Change in Pressure	-0.04 psi	PT10411	0 - ? psi
Change in Time	2.00 min	Range	

Group: TA'D WELLS Well: WIGGAINS 12-12 (acquired on: 10/21/15 12:55:08)

Production		Casing Pressure	Producing
Current	Potential	0.3 psi (g)	
Oil - * -	- * - BBL/D	Casing Pressure Buildup	Annular Gas Flow
Water - * -	- * - BBL/D	-0.041 psi	0 Mscf/D
Gas - * -	- * - Mscf/D	2.00 min	% Liquid
		Gas/Liquid Interface Pressure	100 %
IPR Method	Vogel	1.4 psi (g)	
PBHP/SBHP	- * -	Liquid Level Depth	
Production Efficiency	0.0	3641.91 ft	
Oil 40 deg.API		Pump Intake Depth	
Water 1.05 Sp.Gr.H2O		6864.00 ft	
Gas 0.55 Sp.Gr.AIR		Formation Depth	
Acoustic Velocity	1734.66 ft/s	6864.00 ft	

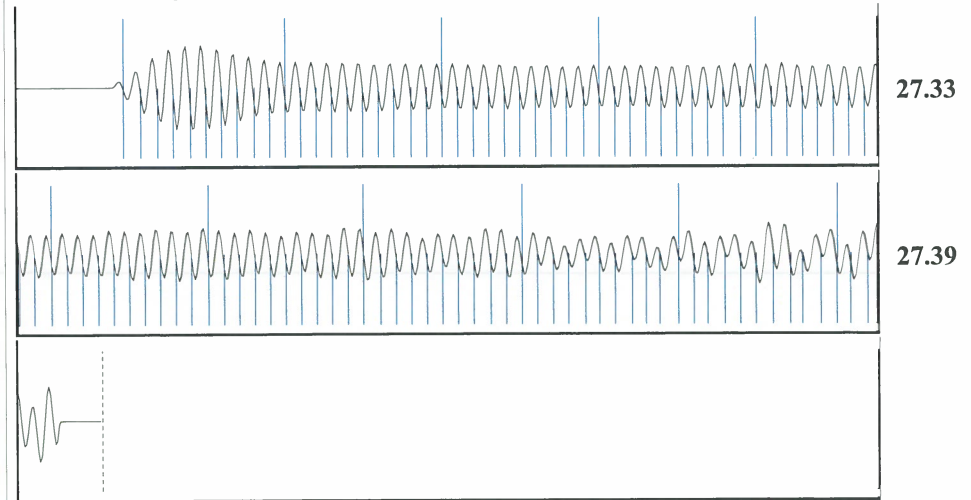
Formation Submergence	
Total Gaseous Liquid Column HT (TVD)	3222 ft
Equivalent Gas Free Liquid HT (TVD)	3222 ft

Acoustic Test



Pump Intake	1055.4 psi (g)
Producing BHP	1055.4 psi (g)
Static BHP	- * - psi (g)

Group: TA'D WELLS Well: WIGGAINS 12-12 (acquired on: 10/21/15 12:55:08)



Acoustic Velocity	1734.66 ft/s	Joints counted	102
Joints Per Second	27.3605 jts/sec	Joints to liquid level	114.887
Depth to liquid level	3641.91 ft	Filter Width	23.9067
Automatic Collar Count	Yes	Time to 1st Collar	0.248
			3.976

Conservation Division
District Office No. 1
210 E. Frontview, Suite A
Dodge City, KS 67801



Phone: 620-225-8888
Fax: 620-225-8885
<http://kcc.ks.gov/>

Shari Feist Albrecht, Chair
Jay Scott Emler, Commissioner
Pat Apple, Commissioner

Sam Brownback, Governor

November 17, 2015

Katherine McClurkan
Merit Energy Company, LLC
13727 Noel Road, Suite 1200
Dallas, TX 75240

Re: Temporary Abandonment
API 15-189-22802-00-00
Wiggains 12 12
SE/4 Sec.12-35S-36W
Stevens County, Kansas

Dear Katherine McClurkan:

"Your temporary abandonment (TA) application for the well listed above has been approved. In accordance with K.A.R. 82-3-111 the TA status of this well will expire 11/17/2016.

- * If you return this well to service or plug it, please notify the District Office.
- * If you sell this well you are required to file a Transfer of Operator form, T-1.
- * If the well will remain temporarily abandoned, you must submit a new TA application, CP-111, before 11/17/2016.

You may contact me at the number above if you have questions.

Very truly yours,

Michael Maier"