

BEREXCO, LLC
HL WILLIAMS LEASE
SE.1/4, SECTION 36, T19S, R22W
NESS COUNTY, KANSAS

GRAVEL (70 ROAD) ROAD

Notes:

1. Set (2) wood stakes at location site.
2. All flagging Red & Yellow.
3. Overhead power available at N. & E. lines and E. 1/2 of S. line, Sec. 36.
4. Kansas One Call System Inc. should be notified before excavation (1-800-344-7233).
5. CAUTION; Various pipelines in Sec. 36.
6. Contact landowner for best access and as to location of wood stakes in planted ground.
7. Location fell 74' NNW of a grass water-way and 70' SSE of a terrace, no alternate set.

TRAIL

(CC ROAD)

DIRT

36

Drillsite Location
HL Williams #4
2140'FSL 610'FEL
Ground Elevation = 2260
Y = 617038 X = 1656612
 State Plane-NAD 27-Kansas South
 (Mapping Grade GPS Used)
Latitude 38.355056
Longitude -99.697723
 WGS 84-NAD 83

TERRACE 70' NNW OF LOCATION

GRASS WATER-WAY 75' SSE OF LOC.

PLANTED GROUND

GRASS

DIRT (60 ROAD) ROAD

ROAD

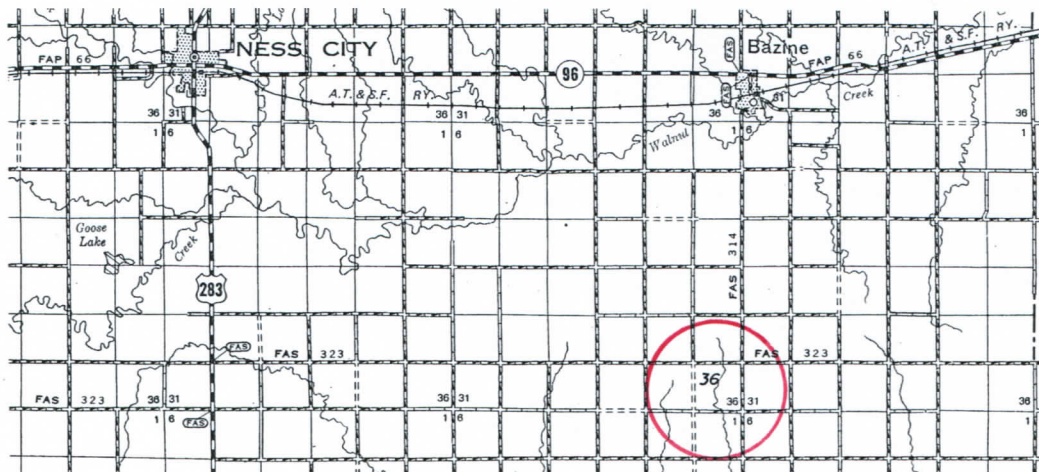
(DD ROAD)

GRAVEL

FLAGGED ROAD OPPOSITE LOC.



* Ingress and egress to location as shown on this plat is per usage only and may not be legally opened for public use. Contact landowner, tenant and county road department for access.



* Controlling data is based upon the best maps and photographs available to us and upon a regular section of land containing 640 acres.
 * Approximate section lines were determined using the normal standard of care of oilfield surveyors practicing in the state of Kansas. The section corners, which establish the precise section lines, were not necessarily located, and the exact location of the drillsite location in the section is not guaranteed. Therefore, the operator securing this service and accepting this plat and all other parties relying thereon agree to hold Central Kansas Oilfield Services, Inc., its officers and employees harmless from all losses, costs and expenses and said entities released from any liability from incidental or consequential damages.
 * Elevations derived from National Geodetic Vertical Datum.

Date October 1, 2015