



DRILL STEM TEST REPORT

Prepared For: **Pickrell Drlg. Co. Inc.**

100 S. Main Ste. 505
Wichita, KS 67202-3738

ATTN: Aaron Young

Huson Trust C #1

12-30s-17w Kingman,KS

Start Date: 2015.06.22 @ 21:41:43

End Date: 2015.06.23 @ 04:36:28

Job Ticket #: 57878 DST #: 1

Trilobite Testing, Inc
1515 Commerce Parkway Hays, KS 67601
ph: 785-625-4778 fax: 785-625-5620

Printed: 2015.06.25 @ 13:27:48

Pickrell Drlg. Co. Inc.
12-30s-17w Kingman,KS
Huson Trust C #1
DST # 1
Hertha
2015.06.22



TRILOBITE TESTING, INC

DRILL STEM TEST REPORT

Pickrell Drig. Co. Inc.
 100 S. Main Ste. 505
 Wichita, KS 67202-3738
 ATTN: Aaron Young

12-30s-17w Kingman,KS
Huson Trust C #1
 Job Ticket: 57878 **DST#: 1**
 Test Start: 2015.06.22 @ 21:41:43

GENERAL INFORMATION:

Formation: **Hertha**
 Deviated: No Whipstock: ft (KB)
 Time Tool Opened: 23:23:13
 Time Test Ended: 04:36:28
 Interval: **3732.00 ft (KB) To 3760.00 ft (KB) (TVD)**
 Total Depth: 3760.00 ft (KB) (TVD)
 Hole Diameter: 7.88 inches Hole Condition: Fair
 Test Type: Conventional Bottom Hole (Initial)
 Tester: Ryan Reynolds
 Unit No: 68
 Reference Elevations: 1443.00 ft (KB)
 1433.00 ft (CF)
 KB to GR/CF: 10.00 ft

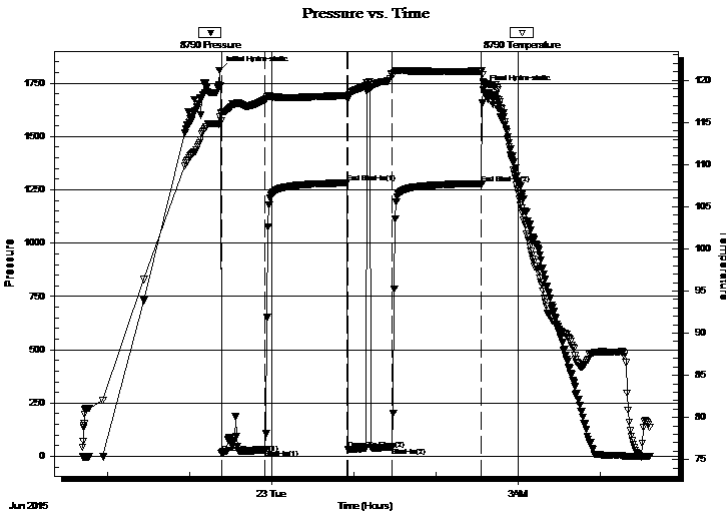
Serial #: 8790

Inside

Press@RunDepth: 44.93 psig @ 3737.00 ft (KB) Capacity: 8000.00 psig
 Start Date: 2015.06.22 End Date: 2015.06.23 Last Calib.: 2015.06.23
 Start Time: 21:41:48 End Time: 04:36:27 Time On Btm: 2015.06.22 @ 23:21:43
 Time Off Btm: 2015.06.23 @ 02:34:43

TEST COMMENT: IF: Weak blow . surf. - 3"
 IS: No blow .
 FF: No blow . Fishd tool 15 min. into. surf. - 1"
 FS: No blow

PRESSURE SUMMARY



Time (Min.)	Pressure (psig)	Temp (deg F)	Annotation
0	1810.35	114.88	Initial Hydro-static
2	15.91	115.18	Open To Flow (1)
34	31.44	117.68	Shut-In(1)
94	1282.85	118.19	End Shut-In(1)
94	32.93	117.72	Open To Flow (2)
127	44.93	120.68	Shut-In(2)
192	1280.01	121.09	End Shut-In(2)
193	1719.29	119.80	Final Hydro-static

Recovery

Length (ft)	Description	Volume (bbl)
60.00	MCW 30%m, 70%w	0.84

Gas Rates

Choke (inches)	Pressure (psig)	Gas Rate (Mcf/d)



**TRILOBITE
TESTING, INC**

DRILL STEM TEST REPORT

TOOL DIAGRAM

Pickrell Drig. Co. Inc.
100 S. Main Ste. 505
Wichita, KS 67202-3738
ATTN: Aaron Young

12-30s-17w Kingman,KS
Huson Trust C #1
Job Ticket: 57878 **DST#: 1**
Test Start: 2015.06.22 @ 21:41:43

Tool Information

Drill Pipe:	Length: 3724.00 ft	Diameter: 3.80 inches	Volume: 52.24 bbl	Tool Weight: 2400.00 lb
Heavy Wt. Pipe:	Length: 0.00 ft	Diameter: inches	Volume: 0.00 bbl	Weight set on Packer: 25000.00 lb
Drill Collar:	Length: 0.00 ft	Diameter: 2.25 inches	Volume: 0.00 bbl	Weight to Pull Loose: 80000.00 lb
			<u>Total Volume: 52.24 bbl</u>	Tool Chased 10.00 ft
Drill Pipe Above KB:	9.00 ft			String Weight: Initial 69000.00 lb
Depth to Top Packer:	3732.00 ft			Final 70000.00 lb
Depth to Bottom Packer:	ft			
Interval between Packers:	32.00 ft			
Tool Length:	49.00 ft			
Number of Packers:	2	Diameter: 6.75 inches		

Tool Comments:

Tool Description	Length (ft)	Serial No.	Position	Depth (ft)	Accum. Lengths
-------------------------	--------------------	-------------------	-----------------	-------------------	-----------------------

Hydraulic tool	5.00			3720.00	
Jars	5.00			3725.00	
Safety Joint	2.00			3727.00	
Packer	5.00			3732.00	17.00 Bottom Of Top Packer
Packer - Shale	4.00			3736.00	
Stubb	1.00			3737.00	
Recorder	0.00	8790	Inside	3737.00	
Recorder	0.00	8792	Outside	3737.00	
Perforations	24.00			3761.00	
Bullnose	3.00			3764.00	32.00 Anchor Tool
Total Tool Length:	49.00				



**TRILOBITE
TESTING, INC**

DRILL STEM TEST REPORT

FLUID SUMMARY

Pickrell Drig. Co. Inc.

12-30s-17w Kingman,KS

100 S. Main Ste. 505
Wichita, KS 67202-3738

Huson Trust C #1

Job Ticket: 57878

DST#: 1

ATTN: Aaron Young

Test Start: 2015.06.22 @ 21:41:43

Mud and Cushion Information

Mud Type: Gel Chem

Cushion Type:

Oil API:

deg API

Mud Weight: 9.00 lb/gal

Cushion Length:

ft

Water Salinity:

57000 ppm

Viscosity: 49.00 sec/qt

Cushion Volume:

bbbl

Water Loss: 10.78 in³

Gas Cushion Type:

Resistivity: ohm.m

Gas Cushion Pressure:

psig

Salinity: 7600.00 ppm

Filter Cake: 0.08 inches

Recovery Information

Recovery Table

Length ft	Description	Volume bbl
60.00	MCW 30%m, 70%w	0.842

Total Length: 60.00 ft Total Volume: 0.842 bbl

Num Fluid Samples: 0

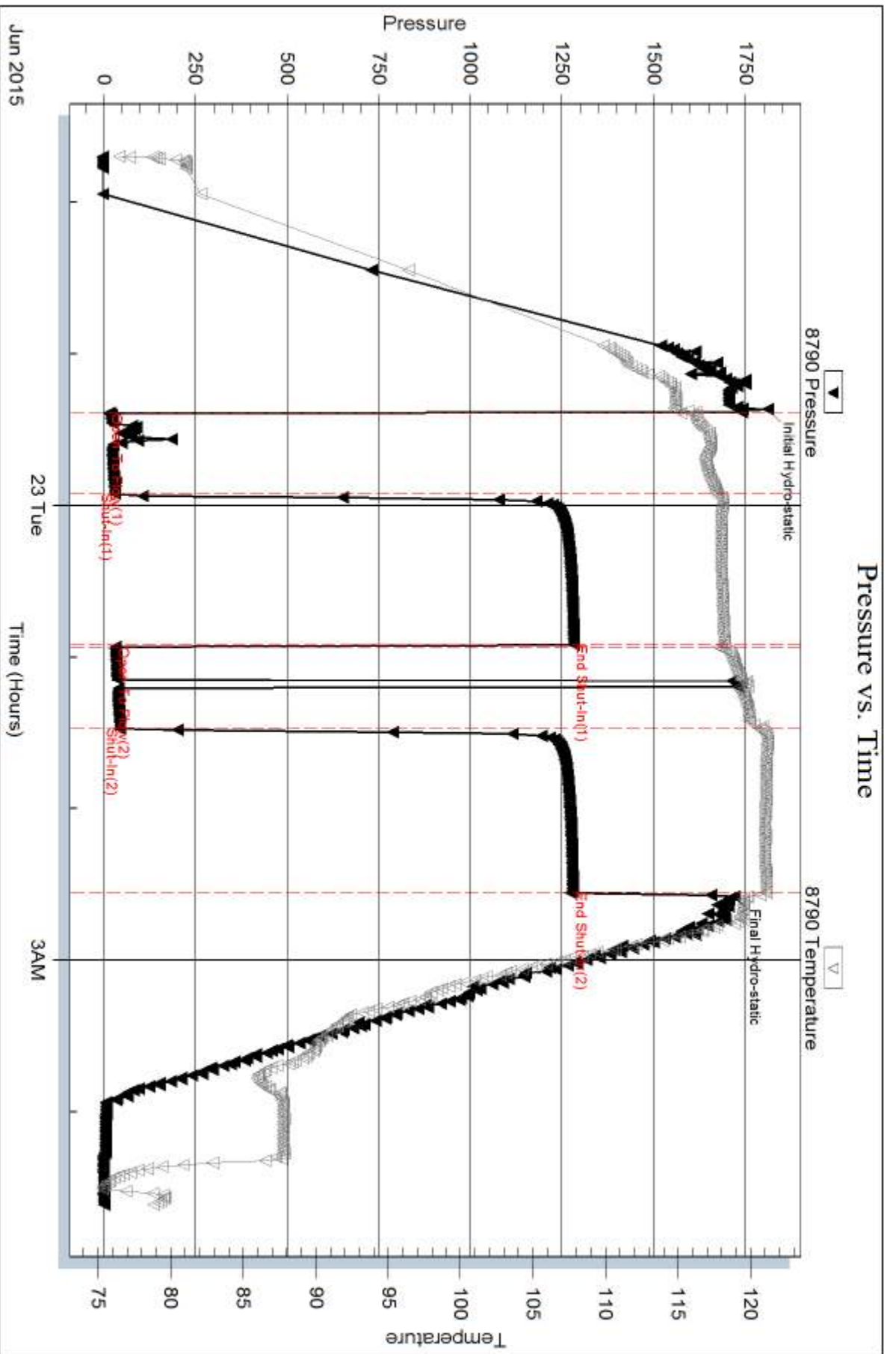
Num Gas Bombs: 0

Serial #: none

Laboratory Name:

Laboratory Location:

Recovery Comments:

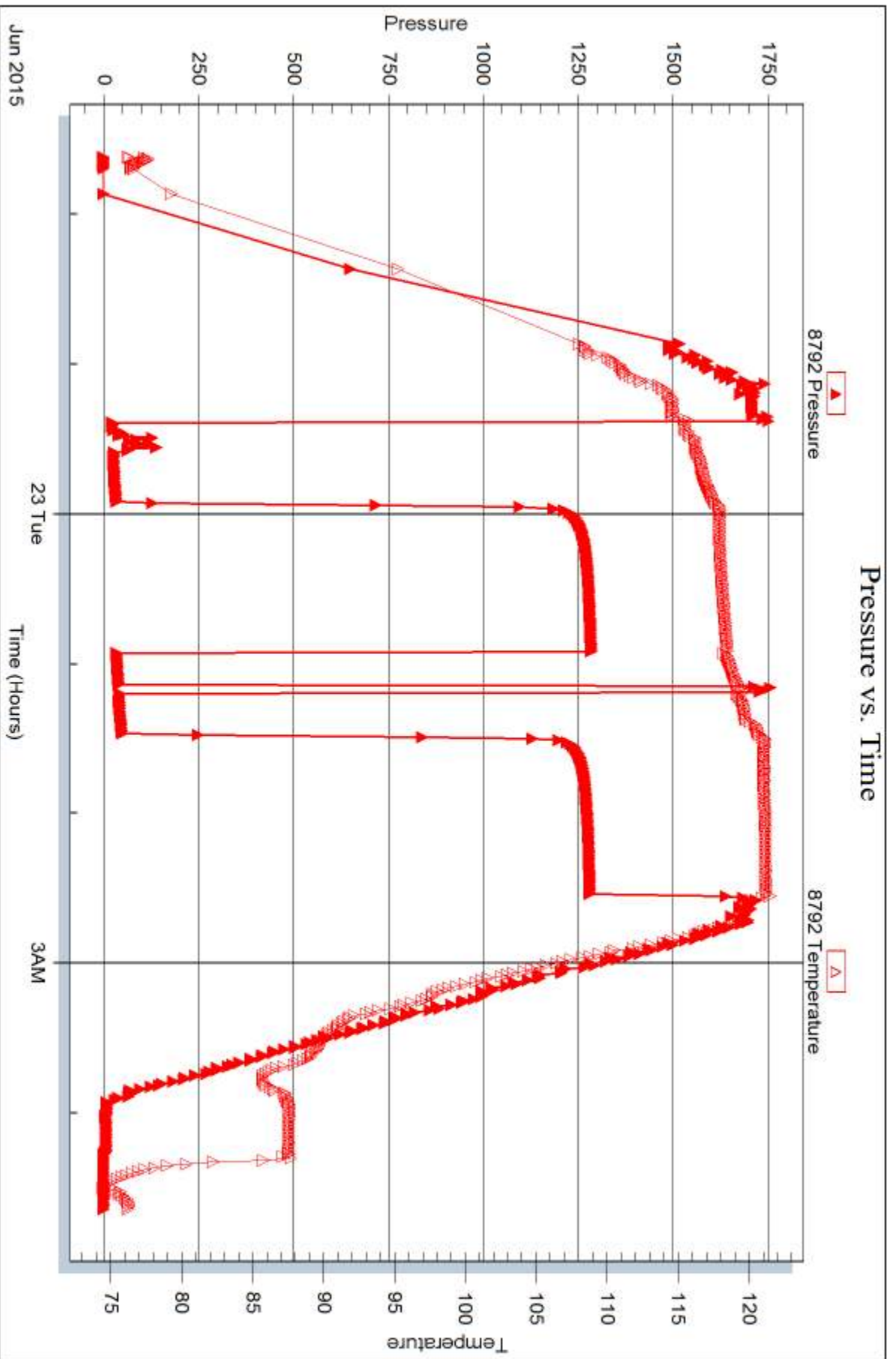


Serial #: 8792

Outside Pckell Drg. Co. Inc.

Huson Trust C#1

DST Test Number: 1



Triobite Testing, Inc

Ref. No: 57878

Printed: 2015.06.25 @ 13:27:49



DRILL STEM TEST REPORT

Prepared For: **Pickrell Drlg. Co. Inc.**

100 S. Main Ste. 505
Wichita, KS 67202-3738

ATTN: Aaron Young

Huson Trust C #1

12-30s-17w Kingman,KS

Start Date: 2015.06.24 @ 09:09:32

End Date: 2015.06.24 @ 17:09:17

Job Ticket #: 57879 DST #: 2

Trilobite Testing, Inc
1515 Commerce Parkway Hays, KS 67601
ph: 785-625-4778 fax: 785-625-5620

Printed: 2015.06.25 @ 13:26:00

Pickrell Drlg. Co. Inc.
12-30s-17w Kingman,KS
Huson Trust C #1
DST # 2
Miss.
2015.06.24



**TRILOBITE
TESTING, INC**

DRILL STEM TEST REPORT

Pickrell Drig. Co. Inc.
100 S. Main Ste. 505
Wichita, KS 67202-3738
ATTN: Aaron Young

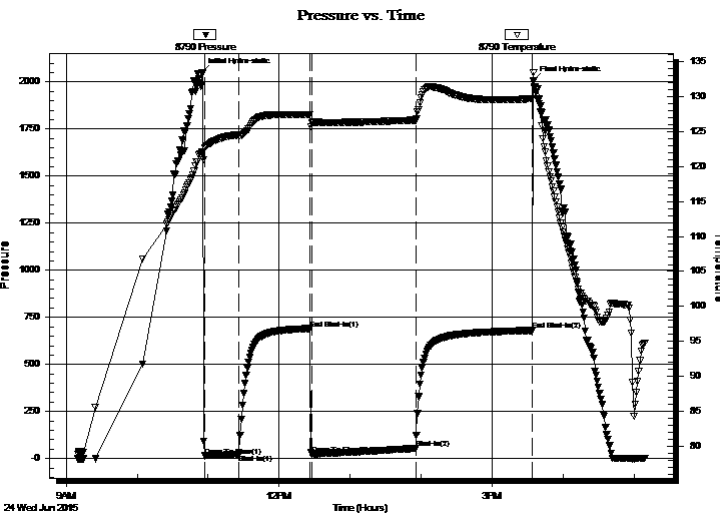
12-30s-17w Kingman,KS
Huson Trust C #1
Job Ticket: 57879 **DST#: 2**
Test Start: 2015.06.24 @ 09:09:32

GENERAL INFORMATION:

Formation: **Miss.**
Deviated: No Whipstock: ft (KB)
Time Tool Opened: 10:57:02
Time Test Ended: 17:09:17
Interval: **4123.00 ft (KB) To 4136.00 ft (KB) (TVD)**
Total Depth: 4136.00 ft (KB) (TVD)
Hole Diameter: 7.88 inches Hole Condition: Poor
Test Type: Conventional Bottom Hole (Reset)
Tester: Ryan Reynolds
Unit No: 68
Reference Elevations: 1443.00 ft (KB)
1433.00 ft (CF)
KB to GR/CF: 10.00 ft

Serial #: 8790 Inside
Press@RunDepth: 54.88 psig @ 4128.00 ft (KB) Capacity: 8000.00 psig
Start Date: 2015.06.24 End Date: 2015.06.24 Last Calib.: 2015.06.24
Start Time: 09:09:37 End Time: 17:09:16 Time On Btm: 2015.06.24 @ 10:54:47
Time Off Btm: 2015.06.24 @ 15:35:02

TEST COMMENT: IF: Strong blow . BOB @ 1 1/2 min.
IS: No blow .
FF: Strong blow . BOB immed. GTS @ 35 min. Gauged.
FS: No blow .



PRESSURE SUMMARY

Time (Min.)	Pressure (psig)	Temp (deg F)	Annotation
0	2051.56	121.97	Initial Hydro-static
3	14.43	122.66	Open To Flow (1)
31	22.03	124.52	Shut-In(1)
92	690.78	127.47	End Shut-In(1)
93	21.68	126.29	Open To Flow (2)
181	54.88	126.64	Shut-In(2)
279	680.13	129.68	End Shut-In(2)
281	2007.03	133.47	Final Hydro-static

Recovery

Length (ft)	Description	Volume (bbl)
45.00	Drig mud 100%m	0.63

* Recovery from multiple tests

Gas Rates

	Choke (inches)	Pressure (psig)	Gas Rate (Mcf/d)
First Gas Rate	0.13	13.00	10.26
Last Gas Rate	0.13	24.00	14.37
Max. Gas Rate	0.13	24.00	14.37



**TRILOBITE
TESTING, INC**

DRILL STEM TEST REPORT

TOOL DIAGRAM

Pickrell Drig. Co. Inc.

12-30s-17w Kingman,KS

100 S. Main Ste. 505
Wichita, KS 67202-3738

Huson Trust C #1

Job Ticket: 57879

DST#: 2

ATTN: Aaron Young

Test Start: 2015.06.24 @ 09:09:32

Tool Information

Drill Pipe:	Length: 4102.00 ft	Diameter: 3.80 inches	Volume: 57.54 bbl	Tool Weight: 2400.00 lb
Heavy Wt. Pipe:	Length: 0.00 ft	Diameter: inches	Volume: 0.00 bbl	Weight set on Packer: 23000.00 lb
Drill Collar:	Length: 0.00 ft	Diameter: 2.25 inches	Volume: 0.00 bbl	Weight to Pull Loose: 83000.00 lb
			<u>Total Volume: 57.54 bbl</u>	Tool Chased 0.00 ft
Drill Pipe Above KB:	1.00 ft			String Weight: Initial 71000.00 lb
Depth to Top Packer:	4123.00 ft			Final 71500.00 lb
Depth to Bottom Packer:	ft			
Interval between Packers:	17.00 ft			
Tool Length:	39.00 ft			
Number of Packers:	2	Diameter: 6.75 inches		

Tool Comments:

Tool Description

Tool Description	Length (ft)	Serial No.	Position	Depth (ft)	Accum. Lengths
Shut In Tool	5.00			4106.00	
Hydraulic tool	5.00			4111.00	
Jars	5.00			4116.00	
Safety Joint	2.00			4118.00	
Packer	5.00			4123.00	22.00 Bottom Of Top Packer
Packer - Shale	4.00			4127.00	
Stubb	1.00			4128.00	
Recorder	0.00	8790	Inside	4128.00	
Recorder	0.00	8792	Outside	4128.00	
Perforations	9.00			4137.00	
Bullnose	3.00			4140.00	17.00 Anchor Tool

Total Tool Length: 39.00



**TRILOBITE
TESTING, INC**

DRILL STEM TEST REPORT

FLUID SUMMARY

Pickrell Drlg. Co. Inc.

12-30s-17w Kingman,KS

100 S. Main Ste. 505
Wichita, KS 67202-3738

Huson Trust C #1

Job Ticket: 57879

DST#: 2

ATTN: Aaron Young

Test Start: 2015.06.24 @ 09:09:32

Mud and Cushion Information

Mud Type: Gel Chem

Cushion Type:

Oil API:

deg API

Mud Weight: 9.00 lb/gal

Cushion Length:

ft

Water Salinity:

10000 ppm

Viscosity: 57.00 sec/qt

Cushion Volume:

bbbl

Water Loss: 10.78 in³

Gas Cushion Type:

Resistivity: ohm.m

Gas Cushion Pressure:

psig

Salinity: 10000.00 ppm

Filter Cake: 0.08 inches

Recovery Information

Recovery Table

Length ft	Description	Volume bbl
45.00	Drig mud 100%m	0.631

Total Length: 45.00 ft

Total Volume: 0.631 bbl

Num Fluid Samples: 1

Num Gas Bombs: 1

Serial #: RR-1

Laboratory Name: Caraway

Laboratory Location: Liberal, KS

Recovery Comments:



**TRILOBITE
TESTING, INC.**

DRILL STEM TEST REPORT

GAS RATES

Pickrell Drig. Co. Inc.

12-30s-17w Kingman,KS

100 S. Main Ste. 505
Wichita, KS 67202-3738

Huson Trust C #1

Job Ticket: 57879

DST#: 2

ATTN: Aaron Young

Test Start: 2015.06.24 @ 09:09:32

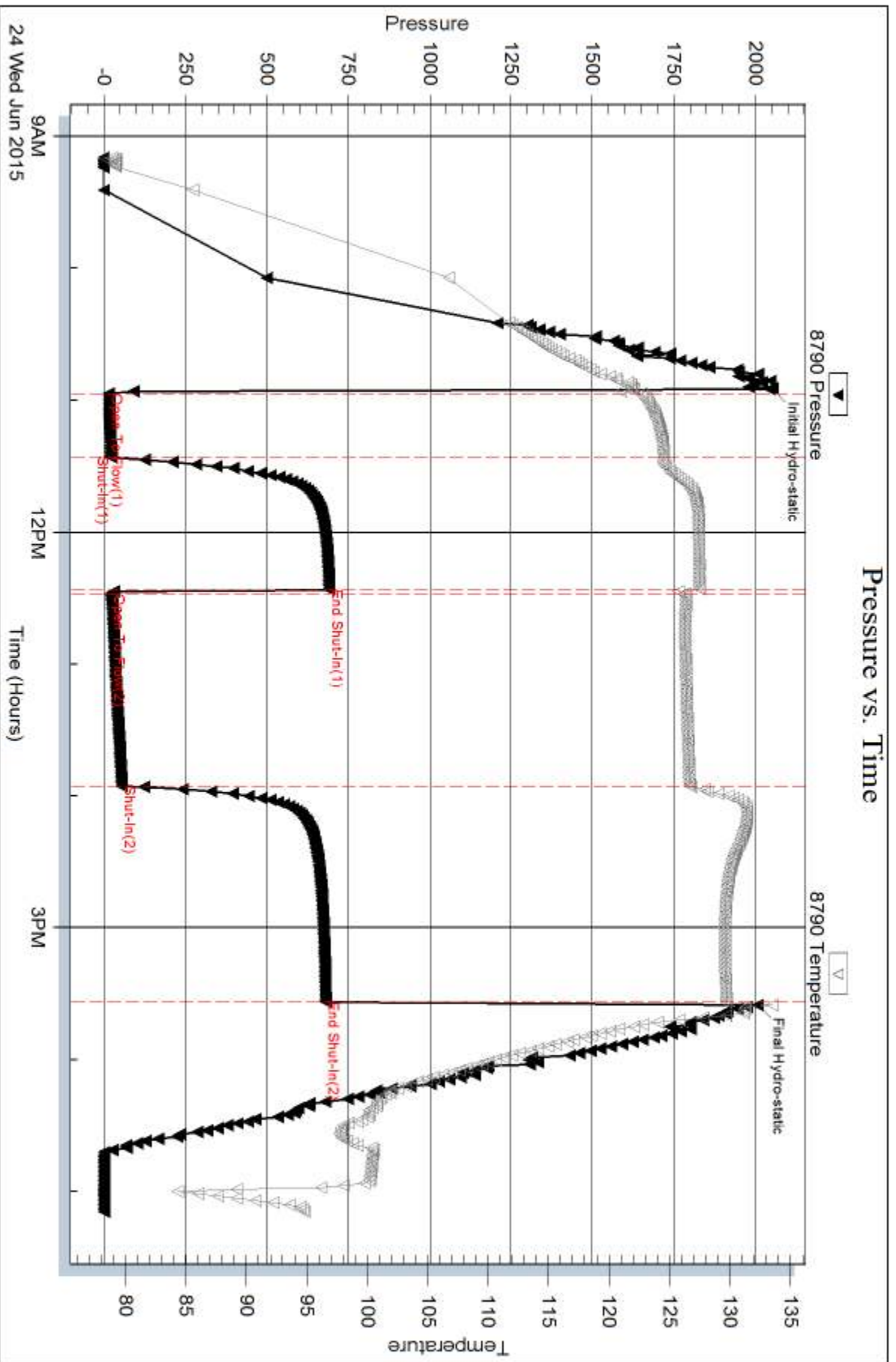
Gas Rates Information

Temperature: 59 (deg F)
Relative Density: 0.65
Z Factor: 0.8

Gas Rates Table

Flow Period	Elapsed Time	Choke (inches)	Pressure (psig)	Gas Rate (Mcf/d)
2	40	0.13	13.00	10.26
2	40	0.13	13.00	10.26
2	50	0.13	16.00	11.38
2	60	0.13	18.00	12.13
2	70	0.13	21.00	13.25
2	80	0.13	24.00	14.37

Pressure vs. Time

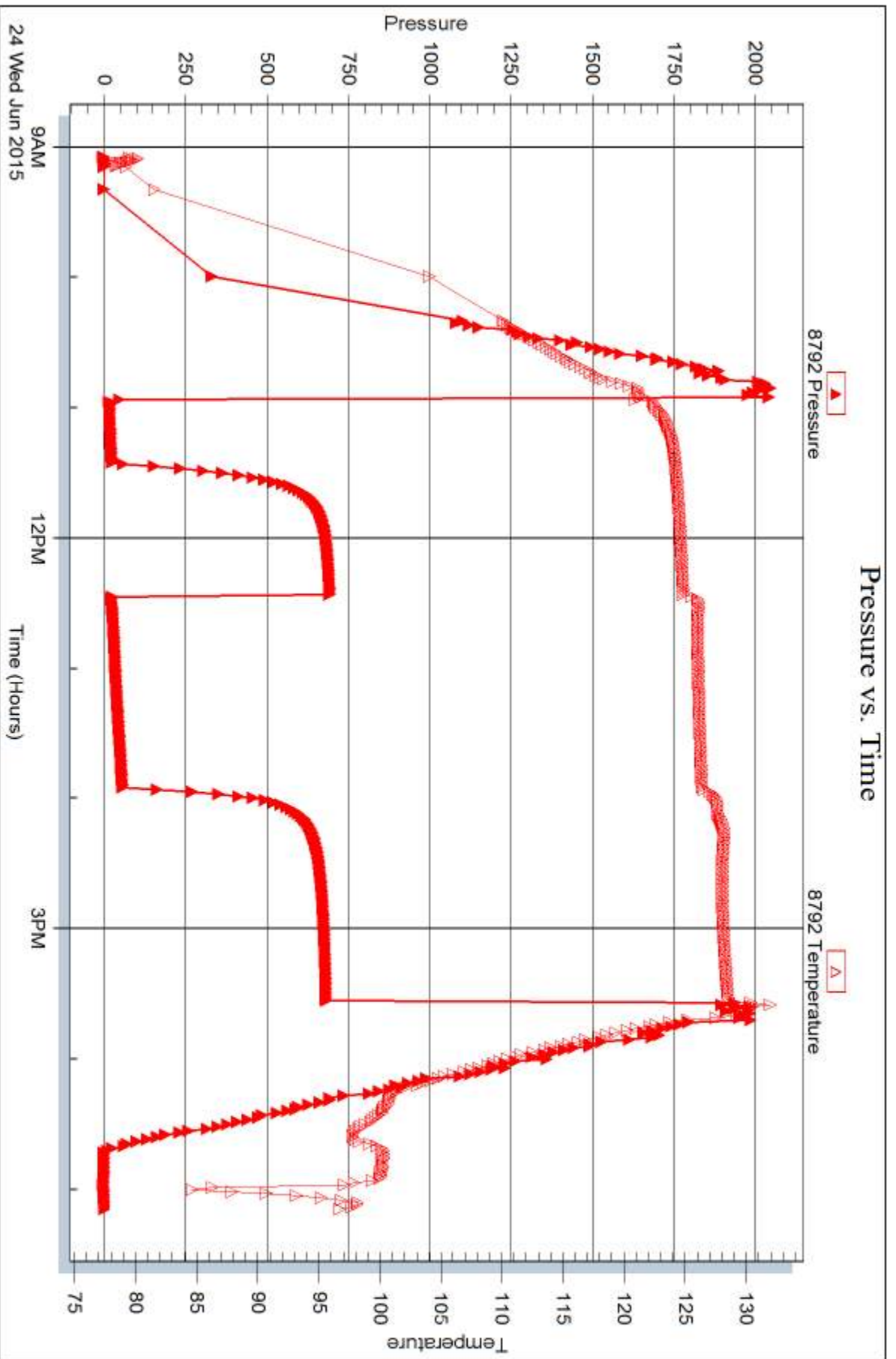


Serial #: 8792

Outside Pckell Drg. Co. Inc.

Huson Trust C#1

DST Test Number: 2



Trilobite Testing, Inc

Ref. No: 57879

Printed: 2015.06.25 @ 13:26:01



DRILL STEM TEST REPORT

Prepared For: **Pickrell Drlg. Co. Inc.**

100 S. Main Ste. 505
Wichita, KS 67202-3738

ATTN: Aaron Young

Huson Trust C #1

12-30s-17w Kingman,KS

Start Date: 2015.06.24 @ 23:46:17

End Date: 2015.06.25 @ 08:13:32

Job Ticket #: 57880 DST #: 3

Trilobite Testing, Inc
1515 Commerce Parkway Hays, KS 67601
ph: 785-625-4778 fax: 785-625-5620

Printed: 2015.06.25 @ 13:24:52



TRILOBITE TESTING, INC.

DRILL STEM TEST REPORT

Pickrell Drig. Co. Inc.
 100 S. Main Ste. 505
 Wichita, KS 67202-3738
 ATTN: Aaron Young

12-30s-17w Kingman,KS
Huson Trust C #1
 Job Ticket: 57880 **DST#: 3**
 Test Start: 2015.06.24 @ 23:46:17

GENERAL INFORMATION:

Formation: **Miss.**
 Deviated: No Whipstock: ft (KB)
 Time Tool Opened: 01:39:32
 Time Test Ended: 08:13:32
 Interval: **4132.00 ft (KB) To 4146.00 ft (KB) (TVD)**
 Total Depth: 4146.00 ft (KB) (TVD)
 Hole Diameter: 7.88 inches Hole Condition: Fair
 Test Type: Conventional Bottom Hole (Reset)
 Tester: Ryan Reynolds
 Unit No: 68
 Reference Elevations: 1443.00 ft (KB)
 1433.00 ft (CF)
 KB to GR/CF: 10.00 ft

Serial #: 8790

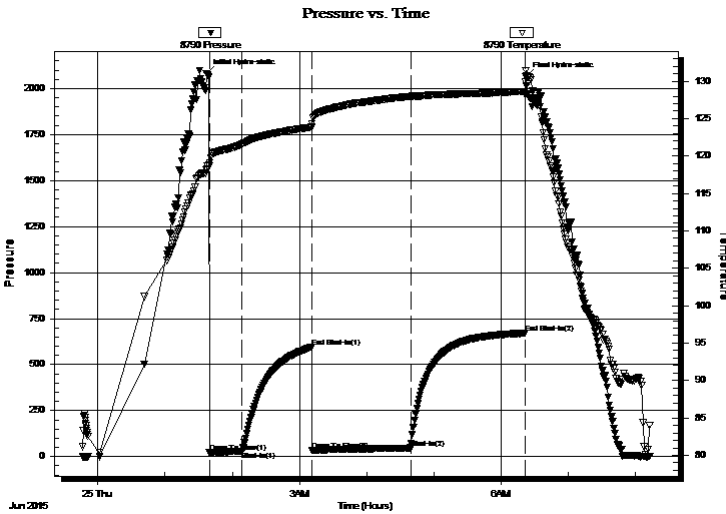
Inside

Press@RunDepth: 47.25 psig @ 4137.00 ft (KB) Capacity: 8000.00 psig
 Start Date: 2015.06.24 End Date: 2015.06.25 Last Calib.: 2015.06.25
 Start Time: 23:46:22 End Time: 08:13:31 Time On Btm: 2015.06.25 @ 01:37:02
 Time Off Btm: 2015.06.25 @ 06:22:17

TEST COMMENT: IF: Strong blow . BOB @ 5 min.
 IS: No blow .
 FF: Strong blow . BOB @ 16 min.
 FS: Good blow back. surf. - 10"

PRESSURE SUMMARY

Time (Min.)	Pressure (psig)	Temp (deg F)	Annotation
0	2082.27	118.31	Initial Hydro-static
3	21.05	118.69	Open To Flow (1)
32	29.72	121.56	Shut-In(1)
94	595.13	123.85	End Shut-In(1)
95	33.04	124.29	Open To Flow (2)
183	47.25	127.96	Shut-In(2)
285	671.05	128.62	End Shut-In(2)
286	2062.59	131.44	Final Hydro-static



Recovery

Length (ft)	Description	Volume (bbl)
100.00	GOWCM 10%g, 5%o, 25%w, 60%m	1.40
0.00	1390' GIP	0.00

* Recovery from multiple tests

Gas Rates

Choke (inches)	Pressure (psig)	Gas Rate (Mcf/d)



**TRILOBITE
TESTING, INC**

DRILL STEM TEST REPORT

TOOL DIAGRAM

Pickrell Drig. Co. Inc.

12-30s-17w Kingman,KS

100 S. Main Ste. 505
Wichita, KS 67202-3738

Huson Trust C #1

Job Ticket: 57880

DST#: 3

ATTN: Aaron Young

Test Start: 2015.06.24 @ 23:46:17

Tool Information

Drill Pipe:	Length: 4134.00 ft	Diameter: 3.80 inches	Volume: 57.99 bbl	Tool Weight: 2400.00 lb
Heavy Wt. Pipe:	Length: 0.00 ft	Diameter: inches	Volume: 0.00 bbl	Weight set on Packer: 22000.00 lb
Drill Collar:	Length: 0.00 ft	Diameter: 2.25 inches	Volume: 0.00 bbl	Weight to Pull Loose: 81000.00 lb
			<u>Total Volume: 57.99 bbl</u>	Tool Chased 0.00 ft
Drill Pipe Above KB:	19.00 ft			String Weight: Initial 70000.00 lb
Depth to Top Packer:	4132.00 ft			Final 71000.00 lb
Depth to Bottom Packer:	ft			
Interval between Packers:	18.00 ft			
Tool Length:	35.00 ft			
Number of Packers:	2	Diameter: 6.75 inches		

Tool Comments:

Tool Description

Tool Description	Length (ft)	Serial No.	Position	Depth (ft)	Accum. Lengths
Hydraulic tool	5.00			4120.00	
Jars	5.00			4125.00	
Safety Joint	2.00			4127.00	
Packer	5.00			4132.00	17.00 Bottom Of Top Packer
Packer - Shale	4.00			4136.00	
Stubb	1.00			4137.00	
Recorder	0.00	8790	Inside	4137.00	
Recorder	0.00	8792	Outside	4137.00	
Perforations	10.00			4147.00	
Bullnose	3.00			4150.00	18.00 Anchor Tool
Total Tool Length:	35.00				



**TRILOBITE
TESTING, INC**

DRILL STEM TEST REPORT

FLUID SUMMARY

Pickrell Drlg. Co. Inc.
100 S. Main Ste. 505
Wichita, KS 67202-3738
ATTN: Aaron Young

12-30s-17w Kingman,KS
Huson Trust C #1
Job Ticket: 57880 **DST#: 3**
Test Start: 2015.06.24 @ 23:46:17

Mud and Cushion Information

Mud Type: Gel Chem	Cushion Type:	Oil API:	deg API
Mud Weight: 9.00 lb/gal	Cushion Length: ft	Water Salinity: 110000 ppm	
Viscosity: 57.00 sec/qt	Cushion Volume: bbl		
Water Loss: 10.39 in ³	Gas Cushion Type:		
Resistivity: ohm.m	Gas Cushion Pressure: psig		
Salinity: 10000.00 ppm			
Filter Cake: 0.08 inches			

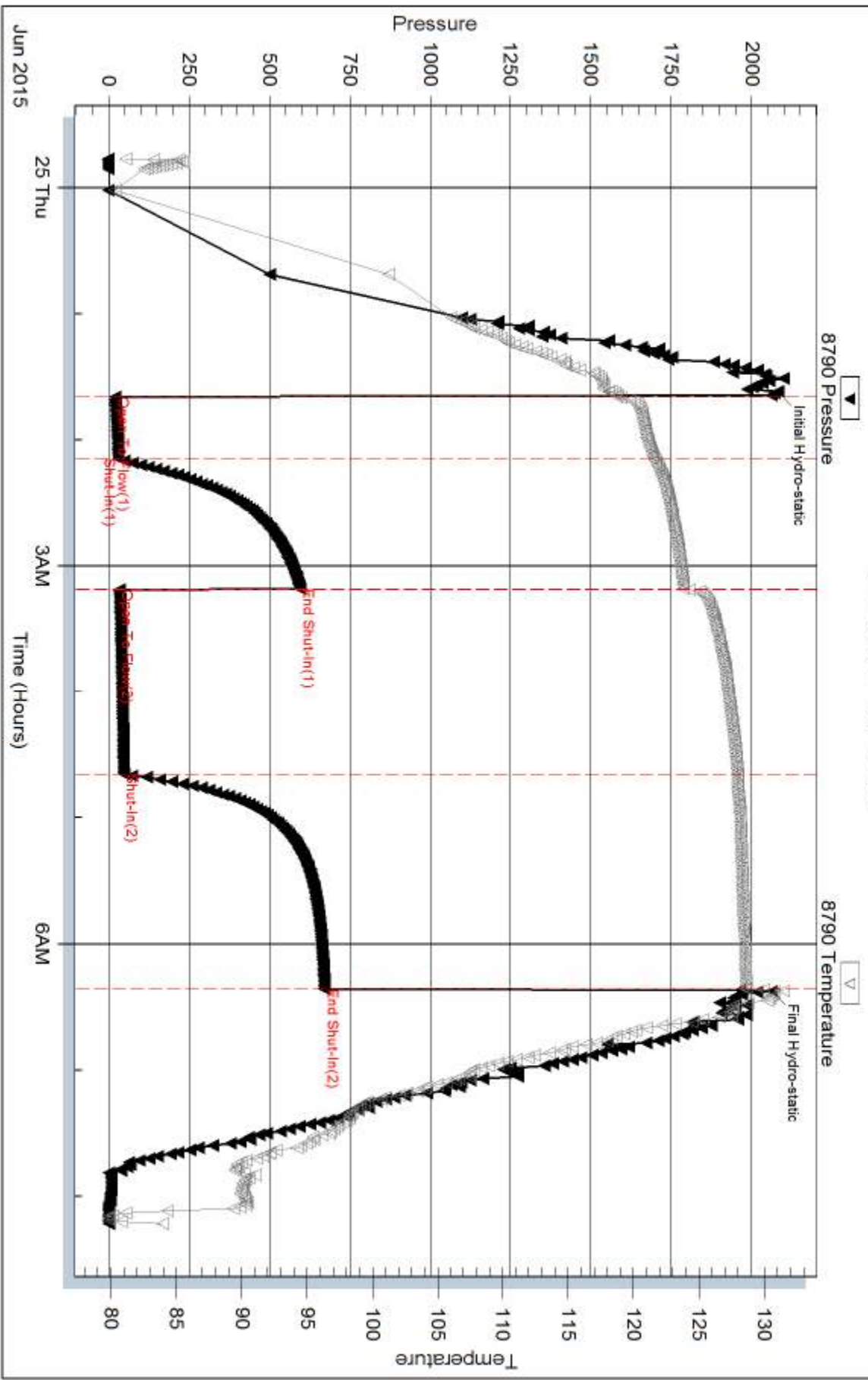
Recovery Information

Recovery Table

Length ft	Description	Volume bbl
100.00	GOWCM 10%g, 5%o, 25%w, 60%m	1.403
0.00	1390' GIP	0.000

Total Length: 100.00 ft Total Volume: 1.403 bbl
 Num Fluid Samples: 0 Num Gas Bombs: 0 Serial #: none
 Laboratory Name: Laboratory Location:
 Recovery Comments:

Pressure vs. Time

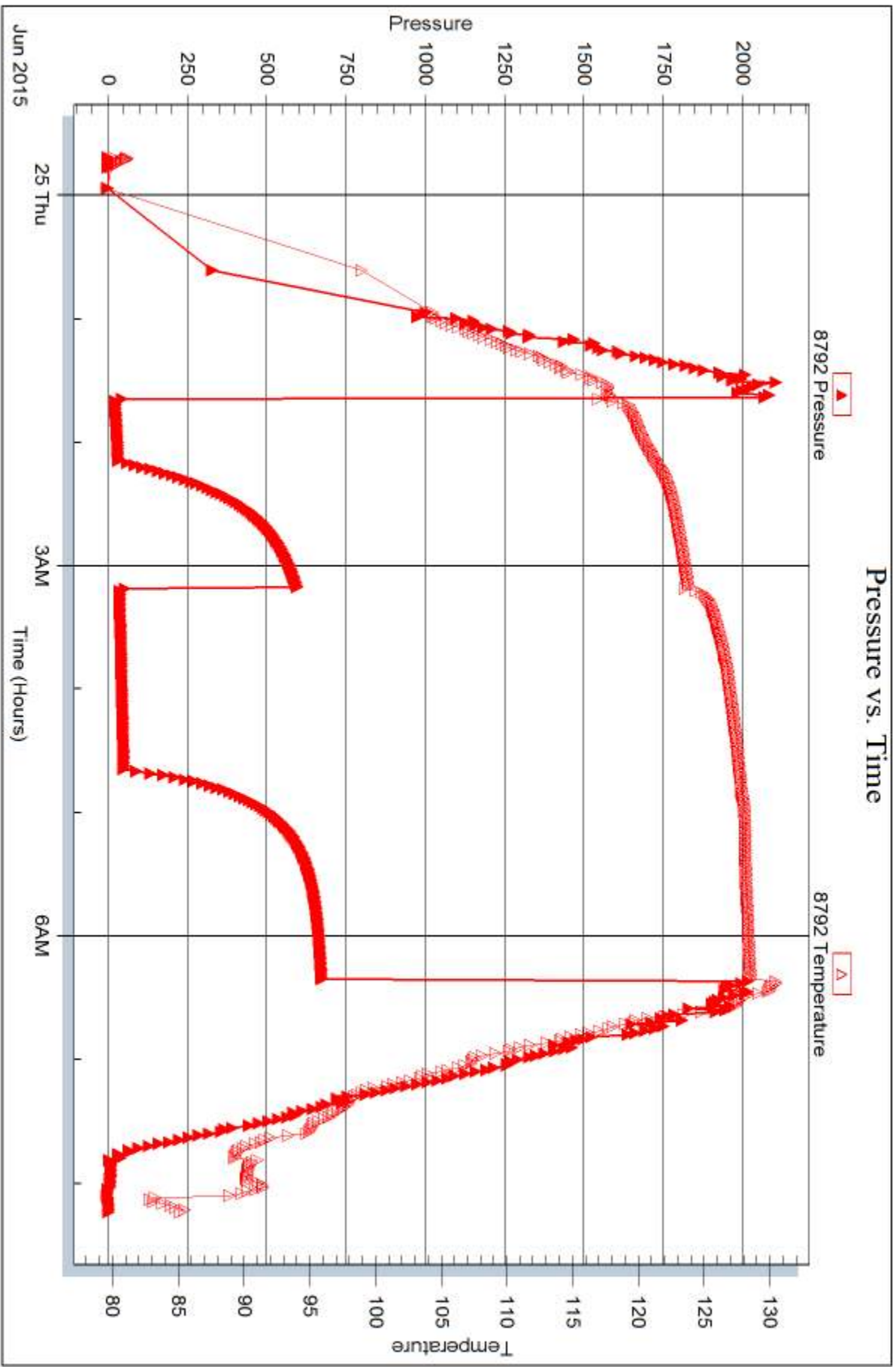


Serial #: 8792

Outside Pckell Drg. Co. Inc.

Huson Trust C#1

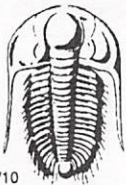
DST Test Number: 3



Triobite Testing, Inc

Ref. No: 57880

Printed: 2015.06.25 @ 13:24:54



TRILOBITE TESTING INC.

1515 Commerce Parkway • Hays, Kansas 67601

Test Ticket

NO. 57878

4/10

Well Name & No. Huson Trust C #1 Test No. 1 Date 6-22-15
 Company Pickrell Drdg. Co. Inc. Elevation 1443 KB 1433 GL
 Address 100 S. Main Ste. 505 Wichita, KS 67202-3738
 Co. Rep / Geo. Aaron Young Rig Pickrell #1
 Location: Sec. 12 Twp. 30s Rge. 17w Co. Kingman State KS

Interval Tested 3732-3760 Zone Tested Hertha
 Anchor Length 28' Drill Pipe Run 3724 Mud Wt. 8.64
 Top Packer Depth 3727 Drill Collars Run Ø Vis 49
 Bottom Packer Depth 3732 Wt. Pipe Run Ø WL 10.8
 Total Depth 3760 Chlorides 7000 ppm System LCM Ø*
 Blow Description IF: Weak blow, surf. - 3" ISI: No blow.
FF: No blow. Flshd tool 15min into surf. - 1"
FSTI: No blow.

Rec	Feet of	%gas	%oil	%water	%mud
<u>60</u>	<u>MCW</u>		<u>70</u>	<u>30</u>	
Rec	Feet of	%gas	%oil	%water	%mud
Rec	Feet of	%gas	%oil	%water	%mud
Rec	Feet of	%gas	%oil	%water	%mud

Rec Total 60 BHT 121 Gravity N/C API RW 1 @ 90 ° F Chlorides 57000 ppm
 Test 1050 T-On Location 2045
 Jars 250 T-Started 2141
 Safety Joint 75 T-Open 2323
 Circ Sub _____ T-Pulled 0230
 Hourly Standby _____ T-Out 0436
 Mileage 112 112 Comments _____
 Sampler _____
 Straddle _____
 Shale Packer 250 Ruined Shale Packer _____
 Extra Packer _____ Ruined Packer _____
 Extra Recorder _____
 Day Standby _____
 Accessibility _____
 Sub Total 1737 Total 1737
 MP/DST Disc't _____

Approved By Aaron Young Our Representative Ryan Reynolds

Trilobite Testing Inc. shall not be liable for damaged of any kind of the property or personnel of the one for whom a test is made, or for any loss suffered or sustained, directly or indirectly, through the use of its equipment, or its statements or opinion concerning the results of any test, tools lost or damaged in the hole shall be paid for at cost by the party for whom the test is made.



TRILOBITE TESTING INC.

1515 Commerce Parkway • Hays, Kansas 67601

Test Ticket

NO. 57879

4/10

Well Name & No. Huson Trust C # 1 Test No. 2 Date 6-24-15
 Company Pickrell Drly Co. Inc. Elevation 1443 KB 1433 GL
 Address 100 S. Main Ste. 505 Wichita, KS 67202-3738
 Co. Rep / Geo. Aaron Young Rig Pickrell 1
 Location: Sec. 12 Twp. 30s. Rge. 17w. Co. Kingman State KS

Interval Tested 4123-4136 Zone Tested Miss.
 Anchor Length 13 Drill Pipe Run 4102 Mud Wt. 9.3
 Top Packer Depth 4118 Drill Collars Run Ø Vis 57
 Bottom Packer Depth 4123 Wt. Pipe Run Ø WL 10.4
 Total Depth 4136 Chlorides 10000 ppm System LCM 1/2#
 Blow Description IF; Strong blow. BOB @ 1 1/2 min. FSI; No blow.
FF; Strong blow. BOB immed. GTS @ 35 min. Gaged.
FST: No blow.

Rec	Feet of	%gas	%oil	%water	%mud
<u>45</u>	<u>Drly mud.</u>			<u>100</u>	
Rec	Feet of	%gas	%oil	%water	%mud
Rec	Feet of	%gas	%oil	%water	%mud
Rec	Feet of	%gas	%oil	%water	%mud
Rec	Feet of	%gas	%oil	%water	%mud

Rec Total 45 BHT 130 Gravity N/C API RW N/C @ N/C °F Chlorides 10000 ppm
 Test 1150 T-On Location 0815
 Jars 250 T-Started 0910
 Safety Joint 75 T-Open 1057
 Circ Sub _____ T-Pulled 1528
 Hourly Standby _____ T-Out 1709
 Mileage 112 112 Comments _____
 Sampler _____
 Straddle _____
 Shale Packer 250 Ruined Shale Packer _____
 Extra Packer _____ Ruined Packer _____
 Extra Recorder _____
 Day Standby _____
 Accessibility _____
 Sub Total 1737 Sub Total 0
 Total 1737 Total _____
 MP/DST Disc't _____

Approved By _____ Our Representative Ryan Reynolds
 Trilobite Testing Inc. shall not be liable for damaged of any kind of the property or personnel of the one for whom a test is made, or for any loss suffered or sustained, directly or indirectly, through the use of its equipment, or its statements or opinion concerning the results of any test, tools lost or damaged in the hole shall be paid for at cost by the party for whom the test is made.



TRILOBITE TESTING INC.

1515 Commerce Parkway • Hays, Kansas 67601

Test Ticket

NO. 57880

Well Name & No. Huson Trust "C" #1 Test No. 3 Date 6-24-15
 Company Pickrell Drilling Co. Inc. Elevation 1443 KB 1433 GL
 Address 100 S. Main Ste. 505 Wichita, KS 67202-3738
 Co. Rep / Geo. Aaron Young Rig Pickrell #1
 Location: Sec. 12 Twp. 30s Rge. 17w Co. Kingman State KS

Interval Tested 4132-4146 Zone Tested Miss.
 Anchor Length 14 Drill Pipe Run 4134 Mud Wt. 9.3
 Top Packer Depth 4127 Drill Collars Run Ø Vis 57
 Bottom Packer Depth 4132 Wt. Pipe Run Ø WL 10.4
 Total Depth 4146 Chlorides 10000 ppm System LCM 1/2#
 Blow Description IF: Strong blow, BOB @ 5 min. ISI: No blow.
FF: Strong blow, BOB @ 16 min. FSI: Grad blowback, surf - 10"

Rec	Feet of	%gas	%oil	%water	%mud
<u>1390</u>	<u>GIP</u>				
<u>100</u>	<u>GOWCM</u>	<u>10</u>	<u>5</u>	<u>25</u>	<u>60</u>

Rec Total 100 BHT 129 Gravity N/C API RW .06 @ 85 °F Chlorides 110000 ppm
 Test 1150 T-On Location 2300
 Jars 250 T-Started 2346
 Safety Joint 75 T-Open 0140
 Circ Sub T-Pulled 0610
 Hourly Standby T-Out 0814
 Mileage 112 112 Comments _____
 Sampler _____
 Straddle _____
 Shale Packer 250 Ruined Shale Packer _____
 Extra Packer _____ Ruined Packer _____
 Extra Recorder _____ Sub Total 0
 Day Standby _____ Total 1737
 Accessibility _____ MP/DST Disc't _____
 Sub Total 1737

Approved By [Signature] Our Representative [Signature]
 Trilobite Testing Inc. shall not be liable for damaged of any kind of the property or personnel of the one for whom a test is made, or for any loss suffered or sustained, directly or indirectly, through the use of its equipment, or its statements or opinion concerning the results of any test, tools lost or damaged in the hole shall be paid for at cost by the party for whom the test is made.