



DRILL STEM TEST REPORT

Prepared For: **Brungardt Oil & Leasing Inc**

PO Box 871
Russell KS 67665-1731

ATTN: Chris Brungardt, Rog

Grabbe A #1

21-15s-18w Ellis,KS

Start Date: 2015.05.17 @ 04:50:43

End Date: 2015.05.17 @ 10:54:22

Job Ticket #: 60584 DST #: 1

Trilobite Testing, Inc
1515 Commerce Parkway Hays, KS 67601
ph: 785-625-4778 fax: 785-625-5620

Printed: 2015.05.19 @ 09:50:49



**TRILOBITE
TESTING, INC**

DRILL STEM TEST REPORT

Brungardt Oil & Leasing Inc

21-15s-18w Ellis,KS

PO Box 871
Russell KS 67665-1731

Grabbe A #1

Job Ticket: 60584

DST#: 1

ATTN: Chris Brungardt, Rog

Test Start: 2015.05.17 @ 04:50:43

GENERAL INFORMATION:

Formation: **Toronto - LKC C**

Deviated: No Whipstock: ft (KB)

Time Tool Opened: 06:33:08

Time Test Ended: 10:54:22

Test Type: Conventional Bottom Hole (Initial)

Tester: Ray Schwager

Unit No: 70

Interval: 3282.00 ft (KB) To 3365.00 ft (KB) (TVD)

Reference Elevations: 2052.00 ft (KB)

Total Depth: 3365.00 ft (KB) (TVD)

2047.00 ft (CF)

Hole Diameter: 7.88 inches Hole Condition: Fair

KB to GR/CF: 5.00 ft

Serial #: 8018

Inside

Press@RunDepth: 67.68 psig @ 3284.00 ft (KB)

Capacity: 8000.00 psig

Start Date: 2015.05.17

End Date:

2015.05.17

Last Calib.:

2015.05.17

Start Time: 04:50:43

End Time:

10:54:22

Time On Btm:

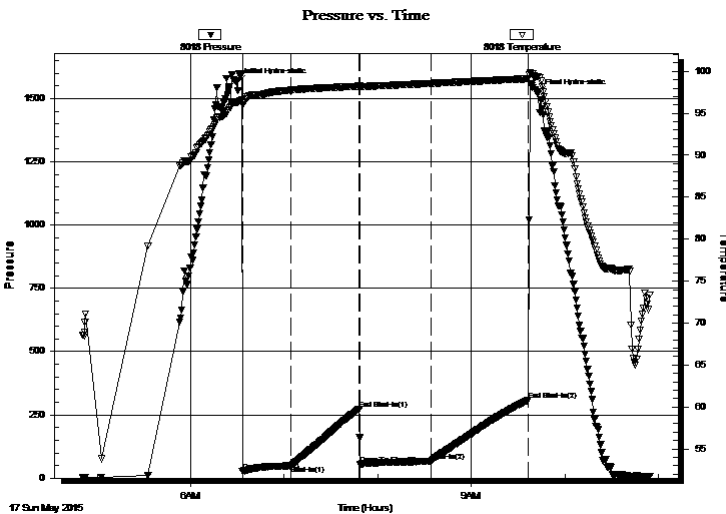
2015.05.17 @ 06:29:53

Time Off Btm:

2015.05.17 @ 09:42:52

TEST COMMENT: 30-IFP-w k to strg in 11 min
45-ISIP-no bl
45-FFP-w k to strg in 7 min
60-FSIP-no bl

PRESSURE SUMMARY



Time (Min.)	Pressure (psig)	Temp (deg F)	Annotation
0	1563.51	96.30	Initial Hydro-static
4	26.61	95.99	Open To Flow (1)
35	48.92	97.76	Shut-In(1)
79	273.65	98.23	End Shut-In(1)
79	55.90	98.16	Open To Flow (2)
125	67.68	98.56	Shut-In(2)
187	307.15	99.12	End Shut-In(2)
193	1519.61	99.34	Final Hydro-static

Recovery

Length (ft)	Description	Volume (bbl)
0.00	450' GIP	0.00
40.00	O&GCM 10%G10%O80%M	0.28
60.00	OCGM 30%G15%O55%M	0.42

Gas Rates

	Choke (inches)	Pressure (psig)	Gas Rate (Mcf/d)



**TRILOBITE
TESTING, INC**

DRILL STEM TEST REPORT

Brungardt Oil & Leasing Inc

21-15s-18w Ellis,KS

PO Box 871
Russell KS 67665-1731

Grabbe A #1

Job Ticket: 60584

DST#: 1

ATTN: Chris Brungardt, Rog

Test Start: 2015.05.17 @ 04:50:43

GENERAL INFORMATION:

Formation: **Toronto - LKC C**

Deviated: No Whipstock: ft (KB)

Time Tool Opened: 06:33:08

Time Test Ended: 10:54:22

Test Type: Conventional Bottom Hole (Initial)

Tester: Ray Schwager

Unit No: 70

Interval: 3282.00 ft (KB) To 3365.00 ft (KB) (TVD)

Reference Elevations: 2052.00 ft (KB)

Total Depth: 3365.00 ft (KB) (TVD)

2047.00 ft (CF)

Hole Diameter: 7.88 inches Hole Condition: Fair

KB to GR/CF: 5.00 ft

Serial #: 8700 Outside

Press@RunDepth: psig @ 3284.00 ft (KB)

Capacity: 8000.00 psig

Start Date: 2015.05.17

End Date:

2015.05.17

Last Calib.:

2015.05.17

Start Time: 04:50:39

End Time:

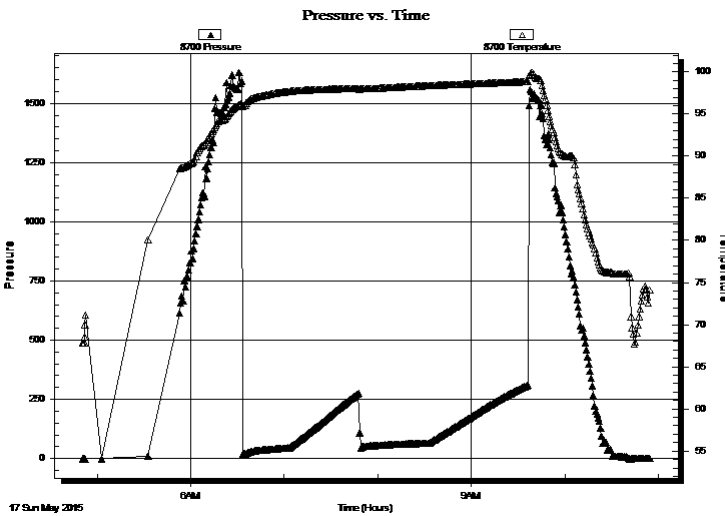
10:54:18

Time On Btm:

Time Off Btm:

TEST COMMENT: 30-IFP-w k to strg in 11 min
45-ISIP-no bl
45-FFP-w k to strg in 7 min
60-FSIP-no bl

PRESSURE SUMMARY



Time (Min.)	Pressure (psig)	Temp (deg F)	Annotation

Recovery

Length (ft)	Description	Volume (bbl)
0.00	450' GIP	0.00
40.00	O&GCM 10%G10%O80%M	0.28
60.00	OCGM 30%G15%O55%M	0.42

Gas Rates

	Choke (inches)	Pressure (psig)	Gas Rate (Mcf/d)



**TRILOBITE
TESTING, INC**

DRILL STEM TEST REPORT

TOOL DIAGRAM

Brungardt Oil & Leasing Inc

21-15s-18w Ellis,KS

PO Box 871
Russell KS 67665-1731

Grabbe A #1

Job Ticket: 60584

DST#: 1

ATTN: Chris Brungardt, Rog

Test Start: 2015.05.17 @ 04:50:43

Tool Information

Drill Pipe:	Length: 2800.00 ft	Diameter: 3.80 inches	Volume: 39.28 bbl	Tool Weight: 2200.00 lb
Heavy Wt. Pipe:	Length: 465.00 ft	Diameter: 2.70 inches	Volume: 3.29 bbl	Weight set on Packer: 25000.00 lb
Drill Collar:	Length: 0.00 ft	Diameter: 0.00 inches	Volume: 0.00 bbl	Weight to Pull Loose: 55000.00 lb
			<u>Total Volume: 42.57 bbl</u>	Tool Chased 0.00 ft
Drill Pipe Above KB:	4.00 ft			String Weight: Initial 48000.00 lb
Depth to Top Packer:	3282.00 ft			Final 49000.00 lb
Depth to Bottom Packer:	ft			
Interval between Packers:	83.00 ft			
Tool Length:	104.00 ft			
Number of Packers:	2	Diameter: 6.75 inches		

Tool Comments:

Tool Description

Tool Description	Length (ft)	Serial No.	Position	Depth (ft)	Accum. Lengths
Change Over Sub	1.00			3262.00	
Shut In Tool	5.00			3267.00	
Hydraulic tool	5.00			3272.00	
Packer	5.00			3277.00	21.00 Bottom Of Top Packer
Packer	5.00			3282.00	
Stubb	1.00			3283.00	
Perforations	1.00			3284.00	
Recorder	0.00	8018	Inside	3284.00	
Recorder	0.00	8700	Outside	3284.00	
Blank Spacing	64.00			3348.00	
Perforations	14.00			3362.00	
Bullnose	3.00			3365.00	83.00 Bottom Packers & Anchor

Total Tool Length: 104.00



**TRILOBITE
TESTING, INC**

DRILL STEM TEST REPORT

FLUID SUMMARY

Brungardt Oil & Leasing Inc

21-15s-18w Ellis,KS

PO Box 871
Russell KS 67665-1731

Grabbe A #1

Job Ticket: 60584

DST#: 1

ATTN: Chris Brungardt, Rog

Test Start: 2015.05.17 @ 04:50:43

Mud and Cushion Information

Mud Type: Gel Chem

Mud Weight: 9.00 lb/gal

Viscosity: 52.00 sec/qt

Water Loss: 5.75 in³

Resistivity: ohm.m

Salinity: 5800.00 ppm

Filter Cake: 1.00 inches

Cushion Type:

Cushion Length: ft

Cushion Volume: bbl

Gas Cushion Type:

Gas Cushion Pressure: psig

Oil API:

Water Salinity: deg API

ppm

Recovery Information

Recovery Table

Length ft	Description	Volume bbl
0.00	450' GIP	0.000
40.00	O&GCM 10%G10%O80%M	0.283
60.00	OCGM 30%G15%O55%M	0.425

Total Length: 100.00 ft Total Volume: 0.708 bbl

Num Fluid Samples: 0

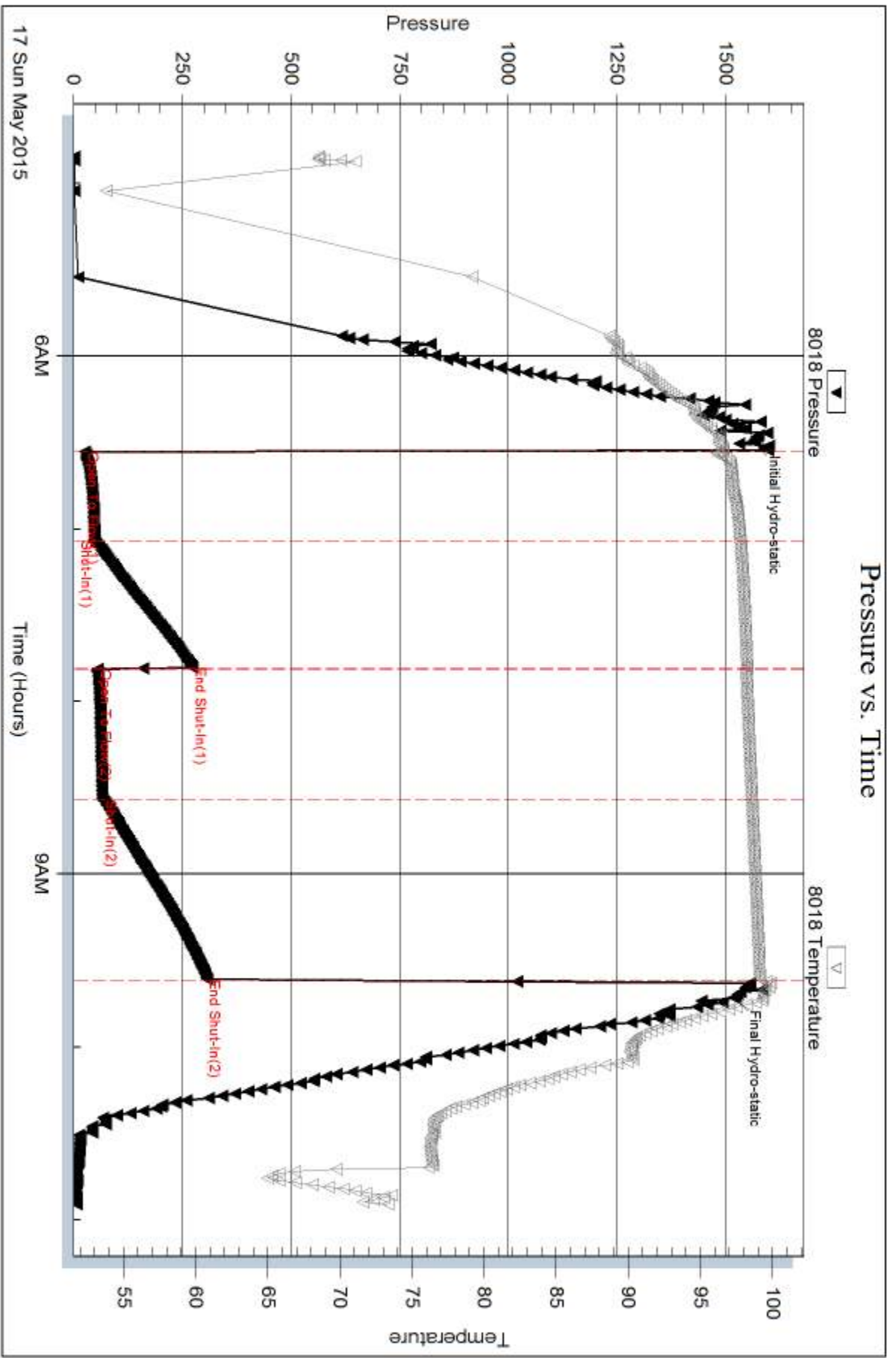
Num Gas Bombs: 0

Serial #:

Laboratory Name:

Laboratory Location:

Recovery Comments:

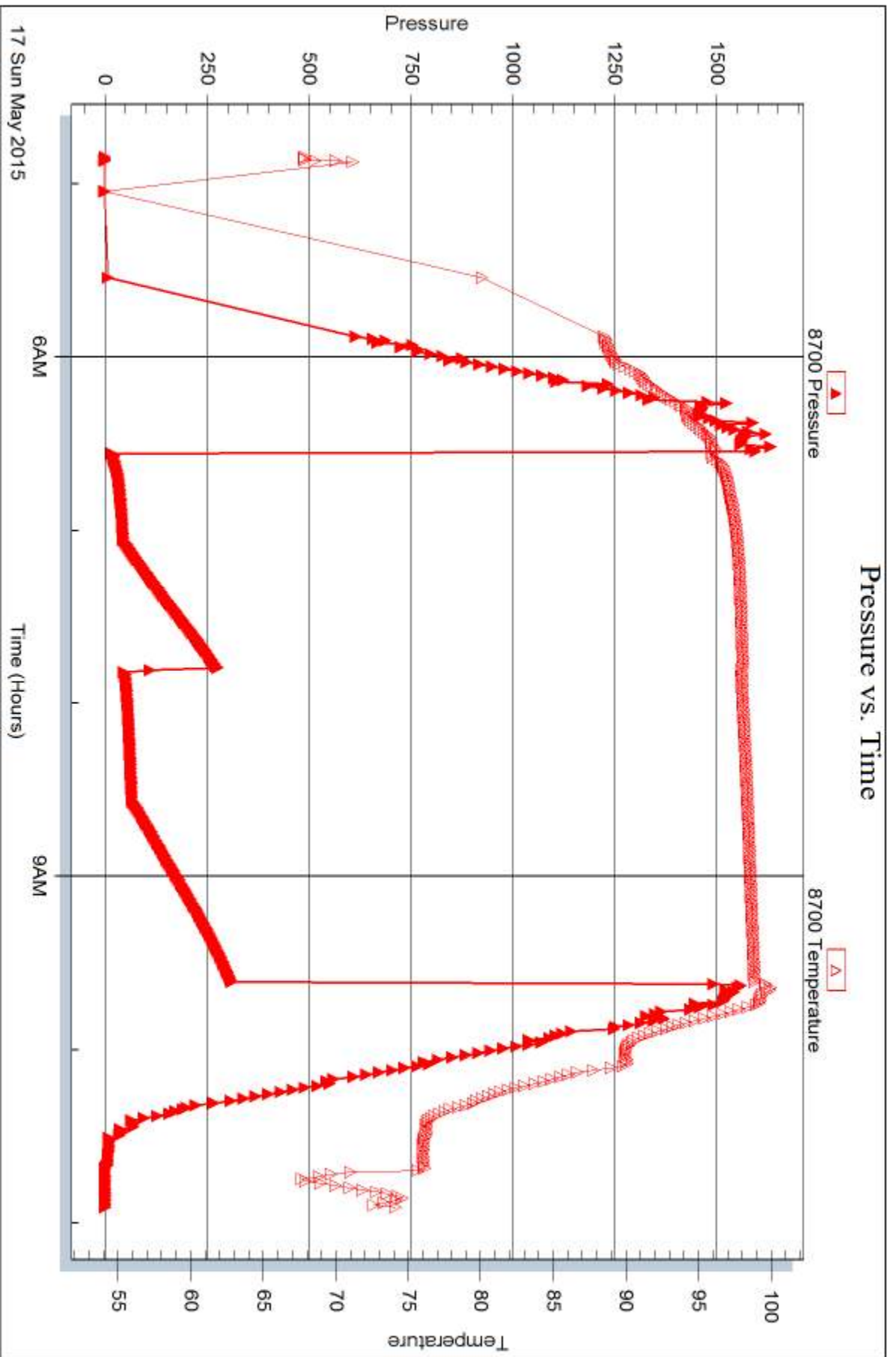


Serial #: 8700

Outside Brungardt Oil & Leasing Inc

Grabbe A #1

DST Test Number: 1



Trilobite Testing, Inc

Ref. No: 60584

Printed: 2015.05.19 @ 09:50:50



DRILL STEM TEST REPORT

Prepared For: **Brungardt Oil & Leasing Inc**

PO Box 871
Russell KS 67665-1731

ATTN: Chris Brungardt, Rog

Grabbe A #1

21-15s-18w Ellis,KS

Start Date: 2015.05.18 @ 03:05:40

End Date: 2015.05.18 @ 06:54:05

Job Ticket #: 60585 DST #: 2

Trilobite Testing, Inc
1515 Commerce Parkway Hays, KS 67601
ph: 785-625-4778 fax: 785-625-5620

Printed: 2015.05.19 @ 09:49:21



TRILOBITE TESTING, INC

DRILL STEM TEST REPORT

Brungardt Oil & Leasing Inc

21-15s-18w Ellis,KS

PO Box 871
Russell KS 67665-1731

Grabbe A #1

Job Ticket: 60585

DST#: 2

ATTN: Chris Brungardt, Rog

Test Start: 2015.05.18 @ 03:05:40

GENERAL INFORMATION:

Formation: **LKC H-J**

Deviated: No Whipstock: ft (KB)

Time Tool Opened: 04:35:50

Time Test Ended: 06:54:05

Test Type: Conventional Bottom Hole (Reset)

Tester: Ray Schwager

Unit No: 70

Interval: 3447.00 ft (KB) To 3510.00 ft (KB) (TVD)

Reference Elevations: 2052.00 ft (KB)

Total Depth: 3510.00 ft (KB) (TVD)

2047.00 ft (CF)

Hole Diameter: 7.88 inches Hole Condition: Fair

KB to GR/CF: 5.00 ft

Serial #: 8018

Inside

Press@RunDepth: 21.80 psig @ 3449.00 ft (KB)

Capacity: 8000.00 psig

Start Date: 2015.05.18

End Date:

2015.05.18

Last Calib.: 2015.05.18

Start Time: 03:05:40

End Time:

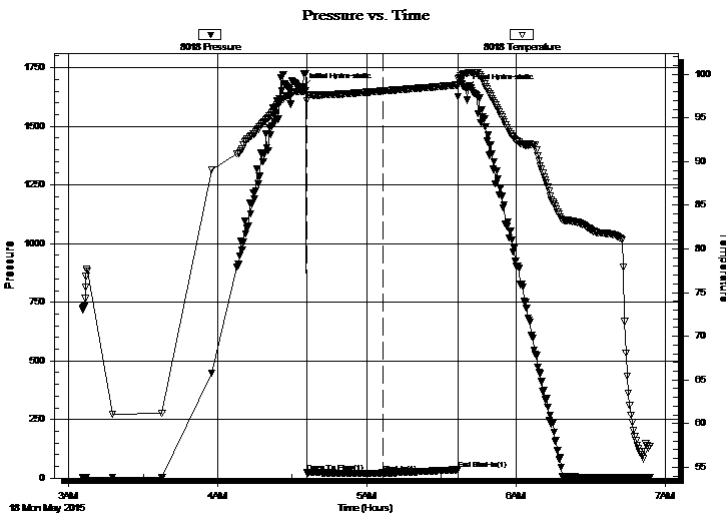
06:54:05

Time On Btm: 2015.05.18 @ 04:34:05

Time Off Btm: 2015.05.18 @ 05:39:50

TEST COMMENT: 30-IFP-vy w k bl , died in 20 min
30-ISIP-no bl
pulled tool

PRESSURE SUMMARY



Time (Min.)	Pressure (psig)	Temp (deg F)	Annotation
0	1666.59	98.06	Initial Hydro-static
2	23.87	97.02	Open To Flow (1)
33	21.80	98.08	Shut-In(1)
63	36.28	98.76	End Shut-In(1)
66	1661.79	100.09	Final Hydro-static

Recovery

Length (ft)	Description	Volume (bbl)
5.00	Mud w/show of oil	0.04

Gas Rates

Choke (inches)	Pressure (psig)	Gas Rate (Mcf/d)

* Recovery from multiple tests



TRILOBITE TESTING, INC.

DRILL STEM TEST REPORT

Brungardt Oil & Leasing Inc

21-15s-18w Ellis, KS

PO Box 871
Russell KS 67665-1731

Grabbe A #1

Job Ticket: 60585

DST#: 2

ATTN: Chris Brungardt, Rog

Test Start: 2015.05.18 @ 03:05:40

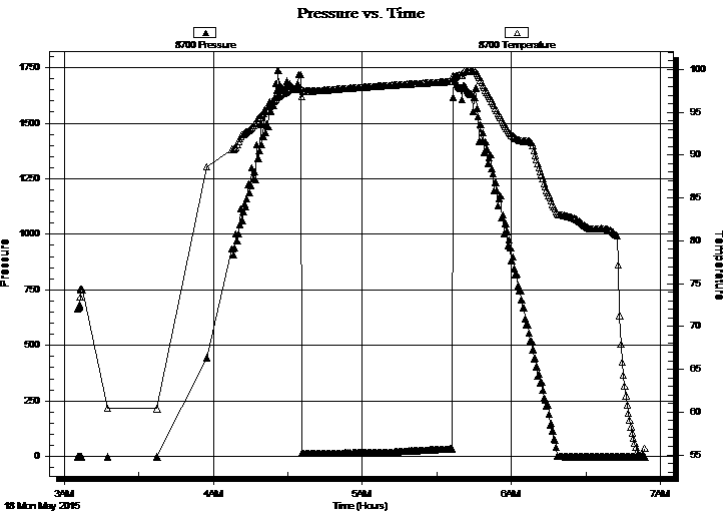
GENERAL INFORMATION:

Formation: LKC H-J	Test Type: Conventional Bottom Hole (Reset)
Deviated: No Whipstock: ft (KB)	Tester: Ray Schwager
Time Tool Opened: 04:35:50	Unit No: 70
Time Test Ended: 06:54:05	Reference Elevations: 2052.00 ft (KB)
Interval: 3447.00 ft (KB) To 3510.00 ft (KB) (TVD)	2047.00 ft (CF)
Total Depth: 3510.00 ft (KB) (TVD)	KB to GR/CF: 5.00 ft
Hole Diameter: 7.88 inches	Hole Condition: Fair

Serial #: 8700 Outside

Press@RunDepth: psig @ 3449.00 ft (KB)	Capacity: 8000.00 psig
Start Date: 2015.05.18	End Date: 2015.05.18
Start Time: 03:05:25	End Time: 06:53:50
	Last Calib.: 2015.05.18
	Time On Btm:
	Time Off Btm:

TEST COMMENT: 30-IFP-vy w k bl , died in 20 min
30-ISIP-no bl
pulled tool



PRESSURE SUMMARY

Time (Min.)	Pressure (psig)	Temp (deg F)	Annotation

Recovery

Length (ft)	Description	Volume (bbl)
5.00	Mud w/show of oil	0.04

* Recovery from multiple tests

Gas Rates

Choke (inches)	Pressure (psig)	Gas Rate (Mcf/d)



**TRILOBITE
TESTING, INC**

DRILL STEM TEST REPORT

TOOL DIAGRAM

Brungardt Oil & Leasing Inc

21-15s-18w Ellis,KS

PO Box 871
Russell KS 67665-1731

Grabbe A #1

Job Ticket: 60585

DST#: 2

ATTN: Chris Brungardt, Rog

Test Start: 2015.05.18 @ 03:05:40

Tool Information

Drill Pipe:	Length: 2988.00 ft	Diameter: 3.80 inches	Volume: 41.91 bbl	Tool Weight: 2200.00 lb
Heavy Wt. Pipe:	Length: 465.00 ft	Diameter: 2.70 inches	Volume: 3.29 bbl	Weight set on Packer: 25000.00 lb
Drill Collar:	Length: 0.00 ft	Diameter: 0.00 inches	Volume: 0.00 bbl	Weight to Pull Loose: 60000.00 lb
			<u>Total Volume: 45.20 bbl</u>	Tool Chased 0.00 ft
Drill Pipe Above KB:	27.00 ft			String Weight: Initial 51000.00 lb
Depth to Top Packer:	3447.00 ft			Final 51000.00 lb
Depth to Bottom Packer:	ft			
Interval between Packers:	63.00 ft			
Tool Length:	84.00 ft			
Number of Packers:	2	Diameter: 6.75 inches		

Tool Comments:

Tool Description

Tool Description	Length (ft)	Serial No.	Position	Depth (ft)	Accum. Lengths
Change Over Sub	1.00			3427.00	
Shut In Tool	5.00			3432.00	
Hydraulic tool	5.00			3437.00	
Packer	5.00			3442.00	21.00 Bottom Of Top Packer
Packer	5.00			3447.00	
Stubb	1.00			3448.00	
Perforations	1.00			3449.00	
Recorder	0.00	8018	Inside	3449.00	
Recorder	0.00	8700	Outside	3449.00	
Blank Spacing	33.00			3482.00	
Perforations	25.00			3507.00	
Bullnose	3.00			3510.00	63.00 Bottom Packers & Anchor

Total Tool Length: 84.00



**TRILOBITE
TESTING, INC**

DRILL STEM TEST REPORT

FLUID SUMMARY

Brungardt Oil & Leasing Inc

21-15s-18w Ellis,KS

PO Box 871
Russell KS 67665-1731

Grabbe A #1

Job Ticket: 60585

DST#: 2

ATTN: Chris Brungardt, Rog

Test Start: 2015.05.18 @ 03:05:40

Mud and Cushion Information

Mud Type: Gel Chem

Mud Weight: 9.00 lb/gal

Viscosity: 60.00 sec/qt

Water Loss: 5.96 in³

Resistivity: ohm.m

Salinity: 6000.00 ppm

Filter Cake: 1.00 inches

Cushion Type:

Cushion Length: ft

Cushion Volume: bbl

Gas Cushion Type:

Gas Cushion Pressure: psig

Oil API:

Water Salinity: deg API

ppm

Recovery Information

Recovery Table

Length ft	Description	Volume bbl
5.00	Mud w/show of oil	0.035

Total Length: 5.00 ft Total Volume: 0.035 bbl

Num Fluid Samples: 0

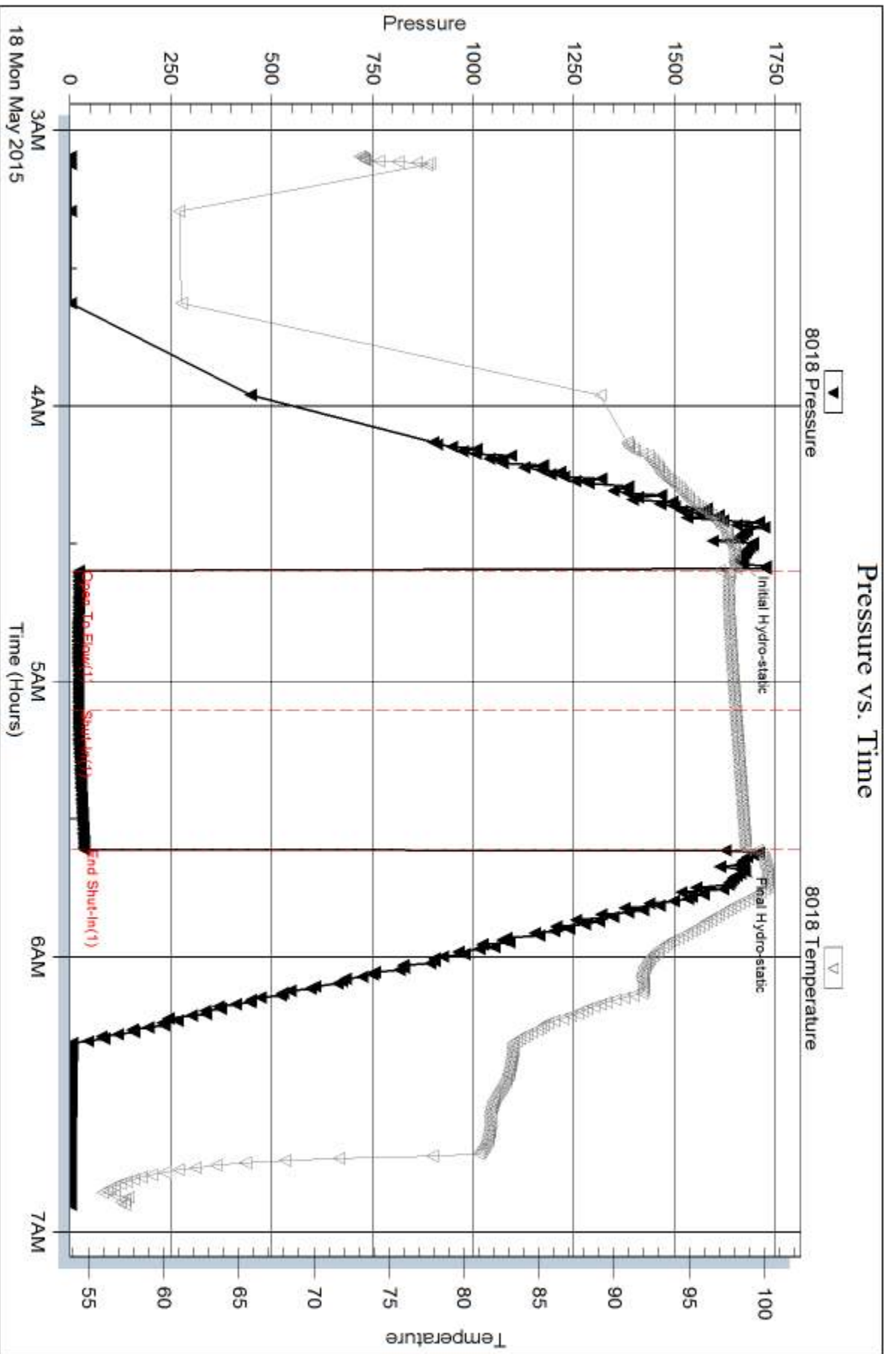
Num Gas Bombs: 0

Serial #:

Laboratory Name:

Laboratory Location:

Recovery Comments:

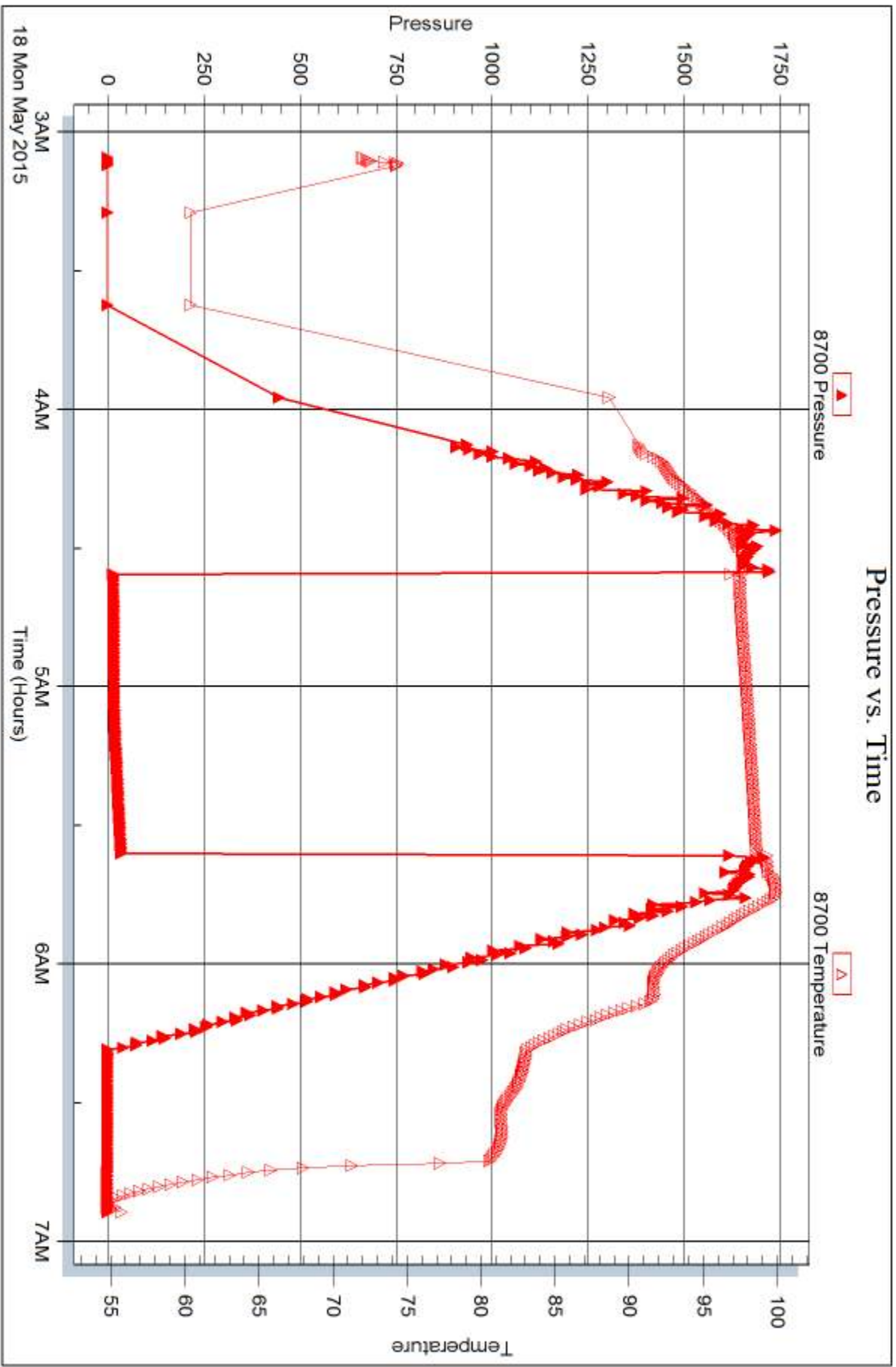


Serial #: 8700

Outside Brungardt Oil & Leasing Inc

Grabbe A #1

DST Test Number: 2



Trilobite Testing, Inc

Ref. No: 60585

Printed: 2015.05.19 @ 09:49:23



DRILL STEM TEST REPORT

Prepared For: **Brungardt Oil & Leasing Inc**

PO Box 871
Russell KS 67665-1731

ATTN: Chris Brungardt, Rog

Grabbe A #1

21-15s-18w Ellis,KS

Start Date: 2015.05.18 @ 22:30:46

End Date: 2015.05.19 @ 04:07:40

Job Ticket #: 60586 DST #: 3

Trilobite Testing, Inc
1515 Commerce Parkway Hays, KS 67601
ph: 785-625-4778 fax: 785-625-5620

Printed: 2015.05.19 @ 09:14:58



TRILOBITE TESTING, INC

DRILL STEM TEST REPORT

Brungardt Oil & Leasing Inc

21-15s-18w Ellis,KS

PO Box 871
Russell KS 67665-1731

Grabbe A #1

Job Ticket: 60586

DST#: 3

ATTN: Chris Brungardt, Rog

Test Start: 2015.05.18 @ 22:30:46

GENERAL INFORMATION:

Formation: **Arbuckle**

Deviated: No Whipstock: ft (KB)

Time Tool Opened: 23:54:41

Time Test Ended: 04:07:40

Test Type: Conventional Bottom Hole (Reset)

Tester: Ray Schwager

Unit No: 70

Interval: 3602.00 ft (KB) To 3640.00 ft (KB) (TVD)

Reference Elevations: 2052.00 ft (KB)

Total Depth: 3640.00 ft (KB) (TVD)

2047.00 ft (CF)

Hole Diameter: 7.88 inches Hole Condition: Fair

KB to GR/CF: 5.00 ft

Serial #: 8018

Inside

Press@RunDepth: 208.82 psig @ 3608.00 ft (KB)

Capacity: 8000.00 psig

Start Date: 2015.05.18

End Date:

2015.05.19

Last Calib.:

2015.05.19

Start Time: 22:30:46

End Time:

04:07:40

Time On Btm:

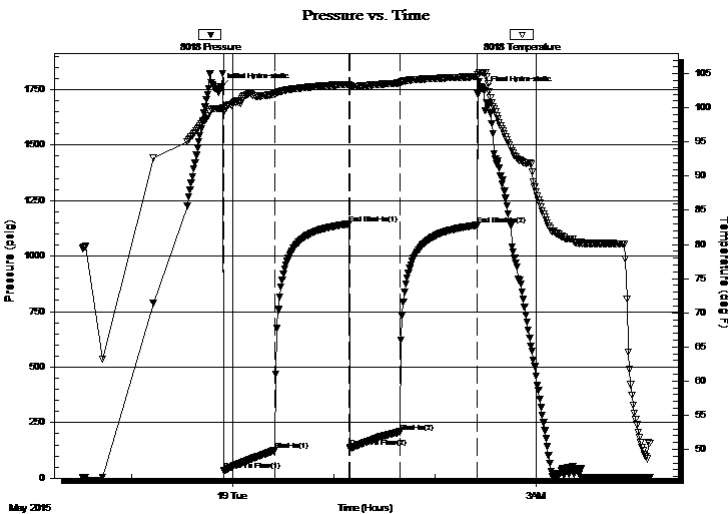
2015.05.18 @ 23:52:56

Time Off Btm:

2015.05.19 @ 02:28:56

TEST COMMENT: 30-IFP-w k to strg in 15 min
45-ISIP-no bl
30-FFP-w k to strg in 27 min
45-FSIP-surface bl bk

PRESSURE SUMMARY



Time (Min.)	Pressure (psig)	Temp (deg F)	Annotation
0	1757.10	99.91	Initial Hydro-static
2	33.22	99.43	Open To Flow (1)
32	124.74	102.00	Shut-In(1)
76	1144.48	103.45	End Shut-In(1)
77	139.93	102.92	Open To Flow (2)
106	208.82	103.64	Shut-In(2)
152	1138.57	104.57	End Shut-In(2)
156	1744.34	105.19	Final Hydro-static

Recovery

Length (ft)	Description	Volume (bbl)
0.00	124' GIP	0.00
410.00	CO	2.90
80.00	GMO 20%G30%M50%O	0.74

* Recovery from multiple tests

Gas Rates

Choke (inches)	Pressure (psig)	Gas Rate (Mcf/d)



**TRILOBITE
TESTING, INC**

DRILL STEM TEST REPORT

TOOL DIAGRAM

Brungardt Oil & Leasing Inc

21-15s-18w Ellis,KS

PO Box 871
Russell KS 67665-1731

Grabbe A #1

Job Ticket: 60586

DST#: 3

ATTN: Chris Brungardt, Rog

Test Start: 2015.05.18 @ 22:30:46

Tool Information

Drill Pipe:	Length: 3144.00 ft	Diameter: 3.80 inches	Volume: 44.10 bbl	Tool Weight: 2200.00 lb
Heavy Wt. Pipe:	Length: 465.00 ft	Diameter: 2.70 inches	Volume: 3.29 bbl	Weight set on Packer: 25000.00 lb
Drill Collar:	Length: 0.00 ft	Diameter: 0.00 inches	Volume: 0.00 bbl	Weight to Pull Loose: 60000.00 lb
			<u>Total Volume: 47.39 bbl</u>	Tool Chased 0.00 ft
Drill Pipe Above KB:	28.00 ft			String Weight: Initial 50000.00 lb
Depth to Top Packer:	3602.00 ft			Final 51000.00 lb
Depth to Bottom Packer:	ft			
Interval between Packers:	38.00 ft			
Tool Length:	59.00 ft			
Number of Packers:	2	Diameter: 6.75 inches		

Tool Comments:

Tool Description

Tool Description	Length (ft)	Serial No.	Position	Depth (ft)	Accum. Lengths
Change Over Sub	1.00			3582.00	
Shut In Tool	5.00			3587.00	
Hydraulic tool	5.00			3592.00	
Packer	5.00			3597.00	21.00 Bottom Of Top Packer
Packer	5.00			3602.00	
Stubb	1.00			3603.00	
Perforations	5.00			3608.00	
Recorder	0.00	8018	Inside	3608.00	
Recorder	0.00	8700	Outside	3608.00	
Perforations	29.00			3637.00	
Bullnose	3.00			3640.00	38.00 Bottom Packers & Anchor

Total Tool Length: 59.00



**TRILOBITE
TESTING, INC**

DRILL STEM TEST REPORT

FLUID SUMMARY

Brungardt Oil & Leasing Inc

21-15s-18w Ellis,KS

PO Box 871
Russell KS 67665-1731

Grabbe A #1

Job Ticket: 60586

DST#: 3

ATTN: Chris Brungardt, Rog

Test Start: 2015.05.18 @ 22:30:46

Mud and Cushion Information

Mud Type: Gel Chem
Mud Weight: 9.00 lb/gal
Viscosity: 51.00 sec/qt
Water Loss: 6.77 in³
Resistivity: ohm.m
Salinity: 6000.00 ppm
Filter Cake: 1.00 inches

Cushion Type:
Cushion Length: ft
Cushion Volume: bbl
Gas Cushion Type:
Gas Cushion Pressure: psig

Oil API: 28 deg API
Water Salinity: ppm

Recovery Information

Recovery Table

Length ft	Description	Volume bbl
0.00	124' GIP	0.000
410.00	CO	2.903
80.00	GMO 20%G30%M50%O	0.740

Total Length: 490.00 ft Total Volume: 3.643 bbl

Num Fluid Samples: 0

Num Gas Bombs: 0

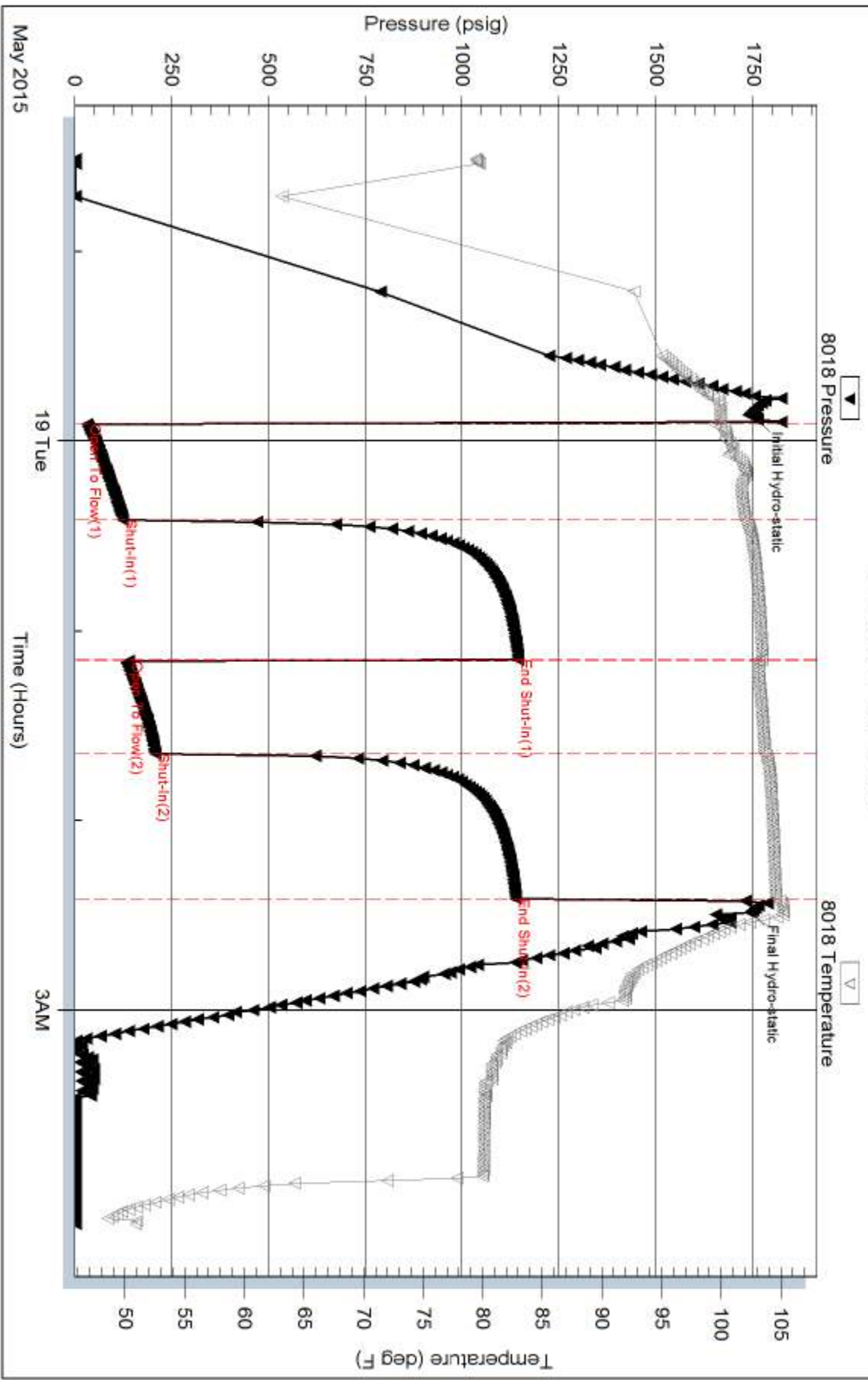
Serial #:

Laboratory Name:

Laboratory Location:

Recovery Comments:

Pressure vs. Time

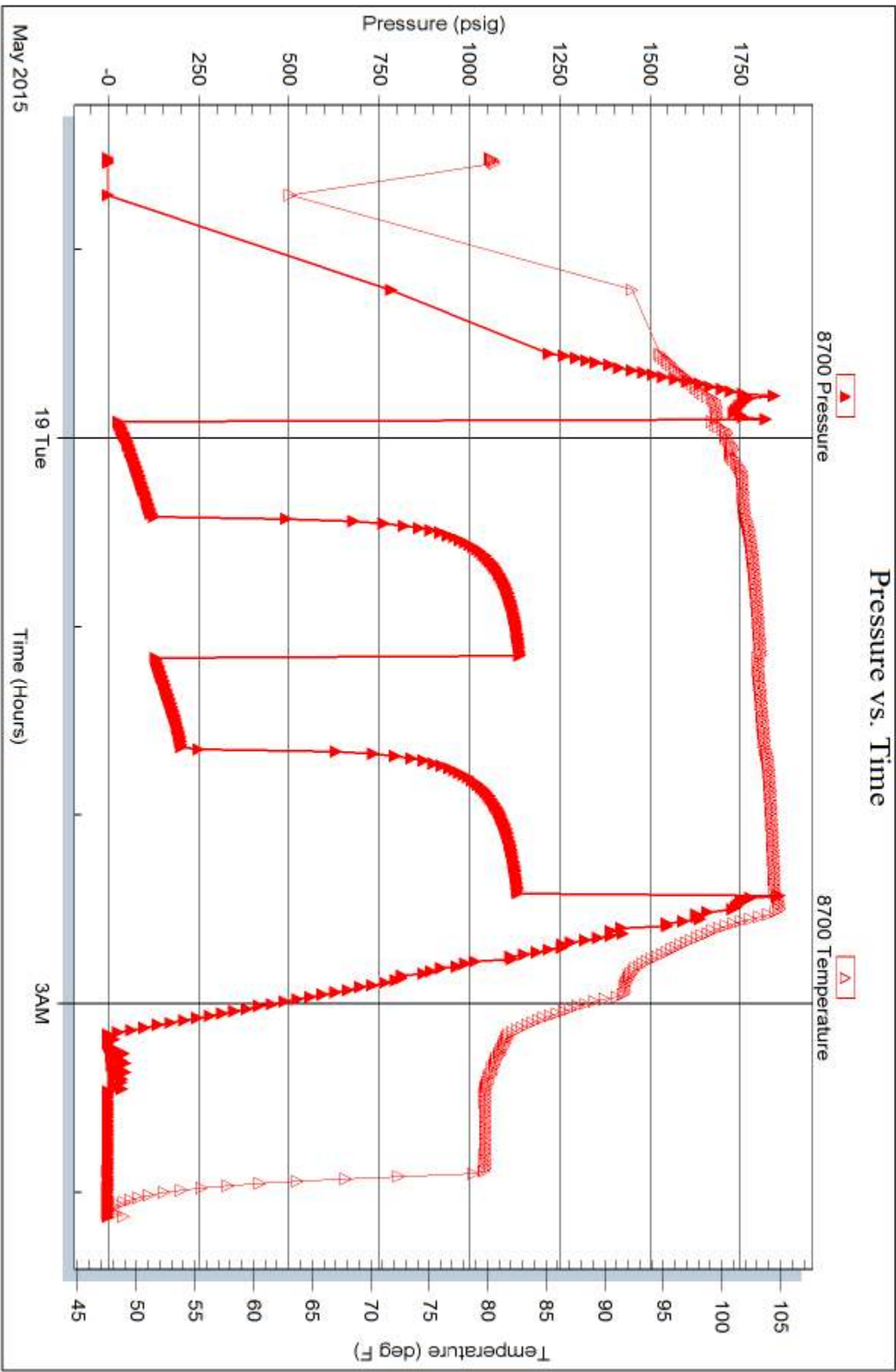


Serial #: 8700

Outside Brungardt Oil & Leasing Inc

Grabbe A #1

DST Test Number: 3



Trilobite Testing, Inc

Ref. No: 60586

Printed: 2015.05.19 @ 09:14:59



TRILOBITE TESTING INC.

1515 Commerce Parkway • Hays, Kansas 67601

Test Ticket

NO. 60584

4/10

Well Name & No. Grabbe A #1 Test No. 1 Date 5-17-15
 Company BRUNGARDT OIL & LEASING INC Elevation 2052 KB 2047 GL
 Address 213 W. 7TH STREET PO Box 871 Russell, Ks 67665-1731
 Co. Rep / Geo. Roger Fisher, Chris BRUNGARDT Rig Shields rig 1
 Location: Sec. 21 Twp. 15^S Rge. 18^W Co. ELLIS State Ks

Interval Tested 3282-3365 Zone Tested Toronto - LKC "C"
 Anchor Length 83 Drill Pipe Run 2800 Mud Wt. 9.2
 Top Packer Depth 3277 Drill Collars Run - Vis 52
 Bottom Packer Depth 3282 Wt. Pipe Run 465 WL 5.8
 Total Depth 3365 Chlorides 5800 ppm System LCM 2#
 Blow Description IFP - WEAK TO STRONG IN 11 MIN
ISTP - NO BLOW
FFP - WEAK TO STRONG IN 7 MIN
FSIP - NO BLOW

Rec	Feet of	%gas	%oil	%water	%mud
<u>450</u>	<u>GTP</u>				
<u>40</u>	<u>0+6CM</u>	<u>10</u>	<u>10</u>		<u>80</u>
<u>60</u>	<u>0CGM</u>	<u>30</u>	<u>15</u>		<u>55</u>

Rec Total 100 BHT 99 Gravity - API RW - @ - ° F Chlorides - ppm
 (A) Initial Hydrostatic 1563 Test 1050 T-On Location 0335
 (B) First Initial Flow 26 Jars _____ T-Started 0450
 (C) First Final Flow 48 Safety Joint _____ T-Open 0635
 (D) Initial Shut-In 273 Circ Sub _____ T-Pulled 0935
 (E) Second Initial Flow 55 Hourly Standby _____ T-Out 1054
 (F) Second Final Flow 67 Mileage 26 RT 26 Comments _____
 (G) Final Shut-In 307 Sampler _____
 (H) Final Hydrostatic 1519 Straddle _____ Ruined Shale Packer _____
 Shale Packer _____ Ruined Packer _____
 Extra Packer _____ Extra Copies _____
 Initial Open 30 Extra Recorder _____ Sub Total 0
 Initial Shut-In 45 Day Standby _____ Total 1076
 Final Flow 45 Accessibility _____ MP/DST Disc't _____
 Final Shut-In 60 Sub Total 1076

Approved By _____ Our Representative Ray Schwager Thank you

Trilobite Testing Inc. shall not be liable for damaged of any kind of the property or personnel of the one for whom a test is made, or for any loss suffered or sustained, directly or indirectly, through the use of its equipment, or its statements or opinion concerning the results of any test, tools lost or damaged in the hole shall be paid for at cost by the party for whom the test is made.



TRILOBITE TESTING INC.

1515 Commerce Parkway • Hays, Kansas 67601

Test Ticket

NO. 60585

Well Name & No. Grabbe A #1 Test No. 2 Date 5-18-15
 Company BRUNGAARDT OIL-LEASING INC Elevation 2052 KB 2047 GL
 Address 213 W. 7th STREET P.O. Box 871 Russell, Ks 67665-1731
 Co. Rep / Geo. Roger Fisher, Chris Brungardt Rig Shields rig 1
 Location: Sec. 21 Twp. 15^s Rge. 18^w Co. Ellis State Ks

Interval Tested 3447-3510 Zone Tested LKC H-J
 Anchor Length 63 Drill Pipe Run 2988 Mud Wt. 9.1
 Top Packer Depth 3442 Drill Collars Run - Vis 60
 Bottom Packer Depth 3447 Wt. Pipe Run 465 WL 6
 Total Depth 3510 Chlorides 6000 ppm System LCM 2#
 Blow Description IFP - Very Weak Blow, died in 20min
ISIP - NO Blow
FFP -
FSIP -

Rec	Feet of	%gas	%oil	%water	%mud
<u>5</u>	<u>Mud w/show foil</u>				
Rec	Feet of	%gas	%oil	%water	%mud
Rec	Feet of	%gas	%oil	%water	%mud
Rec	Feet of	%gas	%oil	%water	%mud
Rec	Feet of	%gas	%oil	%water	%mud

Rec Total 5 BHT 98 Gravity - API RW - @ - °F Chlorides - ppm
 (A) Initial Hydrostatic 1666 Test 1050 T-On Location 0230
 (B) First Initial Flow 23 Jars _____ T-Started 0305
 (C) First Final Flow 21 Safety Joint _____ T-Open 0435
 (D) Initial Shut-In 36 Circ Sub _____ T-Pulled 0535
 (E) Second Initial Flow - Hourly Standby _____ T-Out 0654
 (F) Second Final Flow - Mileage 26 Comments _____
 (G) Final Shut-In - Sampler _____
 (H) Final Hydrostatic 1661 Straddle _____ Ruined Shale Packer _____
 Shale Packer _____ Ruined Packer _____
 Extra Packer _____ Extra Copies _____
 Initial Open 30 Extra Recorder _____ Sub Total 0
 Initial Shut-In 30 Day Standby _____ Total 1076
 Final Flow pulled Tool Accessibility _____ MP/DST Disc't _____
 Final Shut-In - Sub Total 1076

Approved By _____ Our Representative Ray Schwager *Thank you*
 Trilobite Testing Inc. shall not be liable for damaged of any kind of the property or personnel of the one for whom a test is made, or for any loss suffered or sustained, directly or indirectly, through the use of its equipment, or its statements or opinion concerning the results of any test, tools lost or damaged in the hole shall be paid for at cost by the party for whom the test is made.



TRILOBITE TESTING INC.

1515 Commerce Parkway • Hays, Kansas 67601

Test Ticket

NO. 60586

4/10

Well Name & No. Grabbe A#1 Test No. 3 Date 5-18-15
 Company BRUNGARDT OIL LEASING INC Elevation 2052 KB 2047 GL
 Address 213 W. 7TH STREET PO Box 871 Russell, Ks 67665-1731
 Co. Rep / Geo. Roger Fisher, Chris BRUNGARDT Rig 'Shields rig'
 Location: Sec. 21 Twp. 15^S Rge. 18^W Co. ELLIS State Ks

Interval Tested 3602-3640 Zone Tested Arbuckle
 Anchor Length 38 Drill Pipe Run 3144 Mud Wt. 9.2
 Top Packer Depth 3797 Drill Collars Run - Vis 51
 Bottom Packer Depth 3602 Wt. Pipe Run 465 WL 6.8
 Total Depth 3640 Chlorides 6000 ppm System LCM 2#
 Blow Description IFP - WEAK TO STRONG IN 15 MIN
ISIP - NO BLOW
FFP - WEAK TO STRONG IN 27 MIN
FSIP - SURFACE BLOW BACK

Rec	Feet of	%gas	%oil	%water	%mud
<u>124</u>	<u>6TP</u>				
<u>410</u>	<u>CO</u>				
<u>80</u>	<u>6MO</u>	<u>20</u>	<u>50</u>		<u>30</u>

Rec Total 490 BHT 104 Gravity 28 API RW - @ - ° F Chlorides - ppm

(A) Initial Hydrostatic 1757 Test 1050 T-On Location 2200
 (B) First Initial Flow 33 Jars T-Started 2230
 (C) First Final Flow 124 Safety Joint T-Open 2355
 (D) Initial Shut-In 1144 Circ Sub T-Pulled 0225
 (E) Second Initial Flow 139 Hourly Standby T-Out 0407
 (F) Second Final Flow 208 Mileage 26 Comments _____
 (G) Final Shut-In 1138 Sampler _____
 (H) Final Hydrostatic 1744 Straddle _____
 Shale Packer _____
 Extra Packer _____
 Extra Recorder _____
 Day Standby _____
 Accessibility _____

Initial Open 30
 Initial Shut-In 45
 Final Flow 30
 Final Shut-In 45

Sub Total 1076

Sub Total 1076

MP/DST Disc't _____

Approved By _____ Our Representative RAY SCHWAGER *Thank you*

Trilobite Testing Inc. shall not be liable for damaged of any kind of the property or personnel of the one for whom a test is made, or for any loss suffered or sustained, directly or indirectly, through the use of its equipment, or its statements or opinion concerning the results of any test, tools lost or damaged in the hole shall be paid for at cost by the party for whom the test is made.