

L.D. DRILLING, INC.  
CASEY LEASE  
SE. 1/4, SECTION 7, T2S, R37W  
CHEYENNE COUNTY, KANSAS

Directions:

From the intersection of Highway 161 and Highway 36 (in Bird City, Ks.) go 10.0 miles North on Highway 161, then go 0.50 miles East on a county road, then go 0.23 miles South on a county road to a electric wire fence gate on the east side of road, then follow a trail approx. 0.50 miles East to a cattle-guard, then go approx. 0.67 miles Southeast to location.

Notes:

1. Set iron rod at location site.
2. All flagging Red & Yellow.
3. No overhead power available at Sec. 7.
4. Kansas One Call System Inc. should be notified before excavation (1-800-344-7233).
5. CAUTION; Various pipelines in Sec. 7.
6. Cattle in area at date of staking.
7. Contact landowner for best access.
8. Location fell on the side of a hill, set alternate per instructions.
9. Drillsite area will require approximately a 13' cut/fill. Alternate approx. 8' cut/fill.

Drillsite Location  
Casey #2-7

1453' FSL 2135' FEL

Ground Elevation = 3267

Y = 586540 X = 1014930

State Plane-NAD 27-Kansas North

Mapping Grade GPS Used

Latitude 39.891277

Longitude -101.511579

NAD 83

\*Alternate Location

(78' NW. of Loc.)

1508' FSL 2190' FEL

Ground Elevation = 3258

Y = 586595 X = 1014875

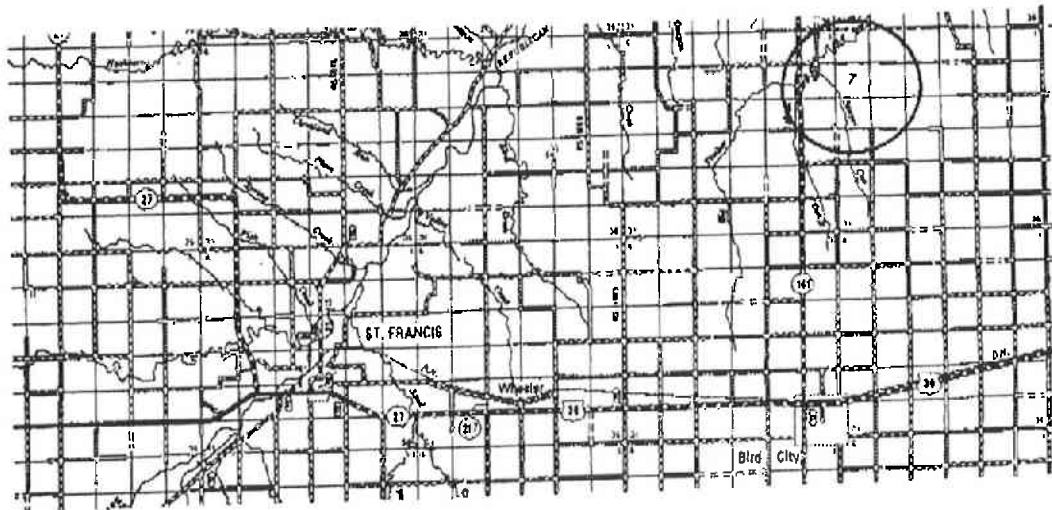
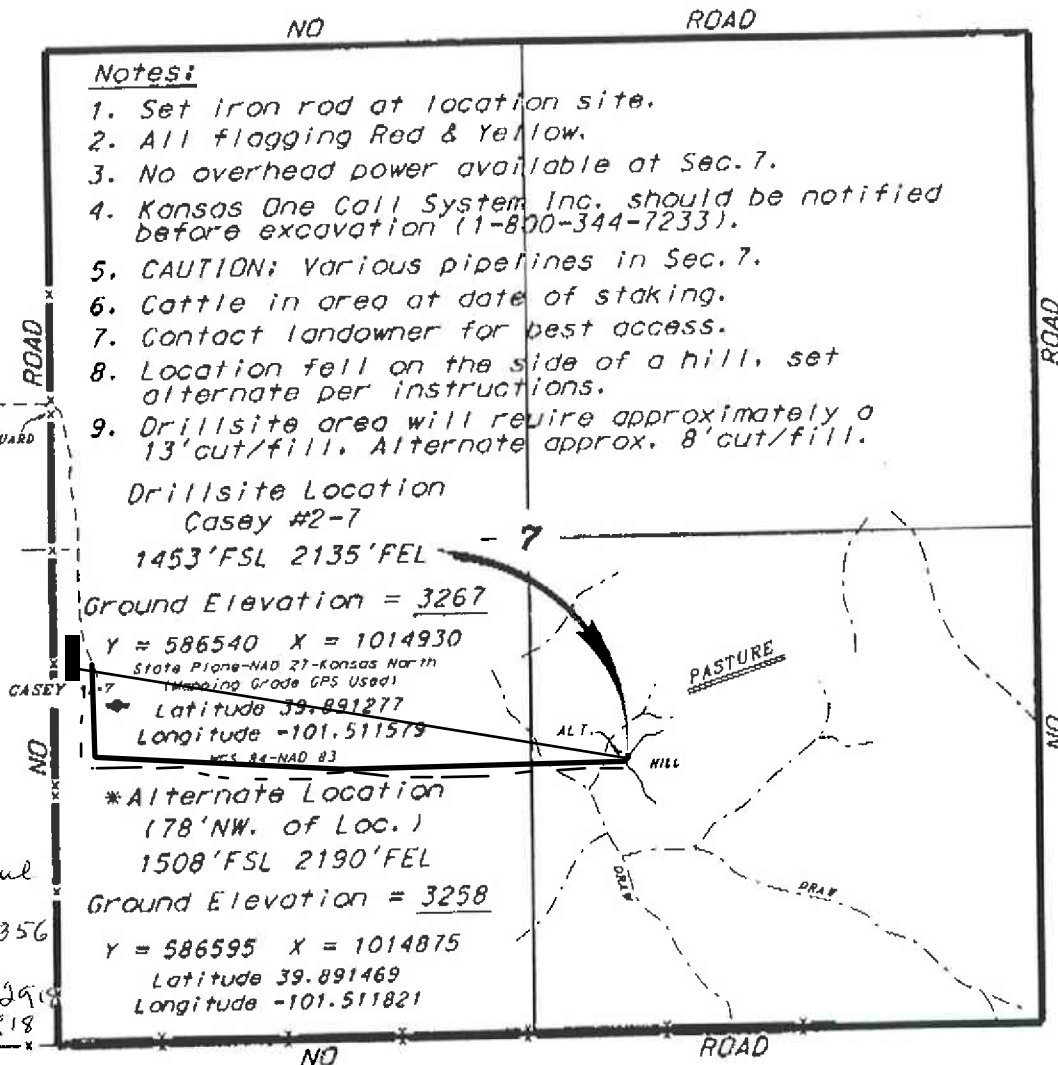
Latitude 39.891469

Longitude -101.511821

Access and egress to location as shown on this plot is for usage only and may not be legally opened for public use. Contact landowner, tenant and county road department for access.

Casey Donohue  
cell 308-340-0356

Home 785-426-2918  
2918



Controlling data is based upon the best maps and photographs available to us and upon a regular section of land containing 640 acres.  
 Appropriate section lines were determined using the normal standard of care of oilfield surveyors practicing in the state of Kansas. The section corners, when established, the precise section lines were not necessarily located, and the exact location of the drillsite location in the section is not guaranteed. Therefore, the operator accepting this service and accepting this plot and all other parties relying thereon agree to hold Central Kansas Oilfield Services, Inc., its officers and employees harmless from all losses, costs and expenses and said entities released from any liability from incidental or consequential damages.  
 Elevations derived from National Geodetic Vertical Datum.

Date October 2, 2015