

Geologic Report  
**Aaron L. Young**

Drilling Time and Sample Log

**Scale 1:240 (5"=100') Imperial  
Measured Depth Log**

**Well Name:** Huson Trust "C" #1  
**API:** 15-095-22295  
**Location:** Section 12 - T30S - R7W  
**License Number:** 5123  
**Spud Date:** 6/09/2015  
**Surface Coordinates:** 1980' FSL and 1980' FWL  
Approx. NE - SW  
**Bottom Hole  
Coordinates:**  
**Ground Elevation (ft):** 1433'      **K.B. Elevation (ft):** 1443'  
**Logged Interval (ft):** 2800'      **To:** 4220'      **Total Depth (ft):** 4220'  
**Formation:** Mississippian  
**Type of Drilling Fluid:** Chemical - Mud-Co

**Region:** Kingman Co., KS  
**Drilling Completed:** 6/25/15

Printed by MUD.LOG from WellSight Systems 1-800-447-1534 www.WellSight.com

**OPERATOR**

**Company:** Pickrell Drilling Company, Inc.  
**Address:** 100 S Main Ste 505  
Wichita, KS 67202+3738

**GEOLOGIST**

**Name:** Aaron L. Young, M.S.  
**Company:** Pickrell Drilling Company, Inc.  
**Address:** 100 S Main, Suite 505  
Wichita, Kansas 67202

**General Info**

**CONTRACTOR:** Pickrell Drilling, Rig #1

**BIT RECORD:**

No.	Size	Make	Jets	Out	Feet	Hours
1	12-1/4	JZ RR	15-15-15	212	202	?
2	7-7/8	ENP223	15-15-15	4220	4018	110.25

**SURVEYS:** 212'-.75, 780'-.75, 1254'-.5, 1759'-.75, 2265'-.75, 2800'-1, 4220'-1

**GENERAL DRILLING AND PUMP INFORMATION:**

Drilling with 38,000 - 42,000 lbs. on bit and approx 70-80 RPM.  
Running 9 stands of collars; 520'  
Pumping approx 1000 psi at standpipe.

## Daily Status

6/09/15 - Spud @ 10:30pm  
 6/10/15 - WOC @ 212', Ran 5 jts of New 8 5/8" 28# surface casing set @ 210', cmt w/ 180 sx Common, 2% gel, 3% CC  
 6/11/15 - Drilling @ 655'  
 6/12/15 - Drilling @ 1538'  
 6/13/15 - Drilling @ 2294'  
 6/14/15 - Drilling @ 2932'  
 6/15/15 - Drilling @ 3557'  
 6/16/15 - SD for extremely muddy conditions  
 6/17/15 - Still SD  
 6/18/15 - Pumping water off roads. Plan to resume 6/22

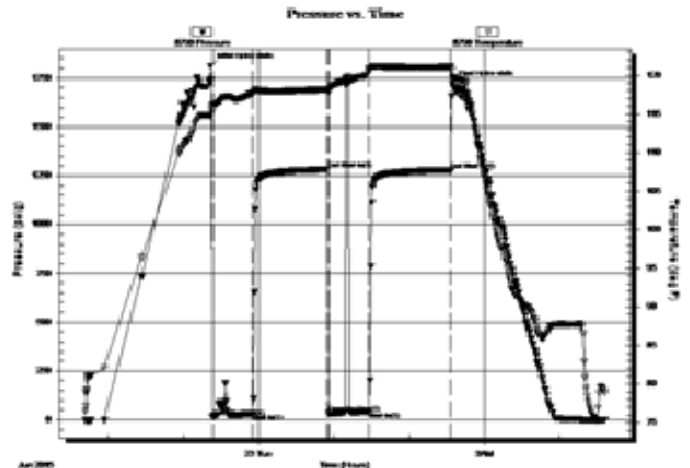
6/22/15 - Resume drilling  
 6/23/15 - DST #1: 3732'-3760' (Hertha)  
 6/24/15 - DST #2: 4123'-4136' (Miss)  
 2/25/15 - DST #3: 4132'-4146' (Miss), TD'd at 4220' (RTD), Pipe strap 1.27 short to board  
 2/26/15 - TD @ 4220', Logged, Ran 101 jts of New 5 1/2" 14# prod casing set @ 4212', cmt w/ 150sx Class A, 10% salt, w/ 5# KC/sx, 25sx in RH, 25sx in MH

**DST #1 HERTHA 3732'-3760'**  
30"-60"-30"-60"

IF: Weak surface blow - 3"  
 ISI: No blow  
 FF: No blow, Flushed tool 15min, surf- 1"  
 FSI: No blow

Rec': 60' MCW (30% M, 70% W)

SIPs: 1283-1280#, FPs: 16-31#, 33-45#, HPs: 1810-1719#



**DST #2 MISSISSIPPIAN 4123'-4136' 30"-60"-90"-90"**

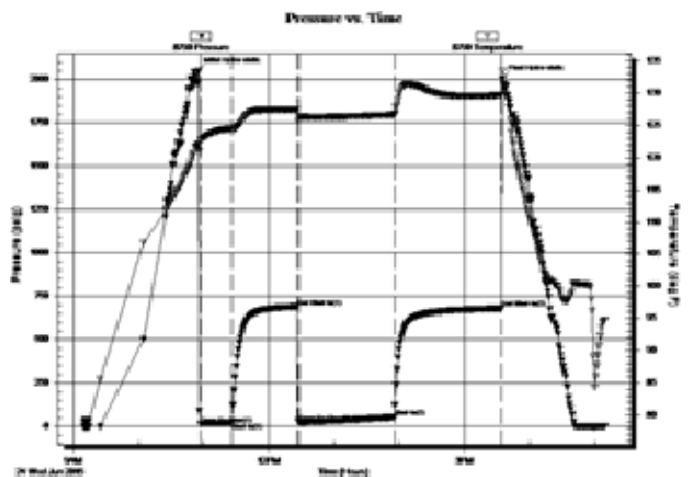
IF: BOB in 1 1/2min  
 ISI: No blow  
 FF: BOB immed. GTS @ 35min. Guaged  
 FSI: No blow

Rec': 45' Drlg mud (100% M)

FF @ 35 min GTS:

40" 10 mcf/d  
 50" 11 mcf/d  
 60" 12 mcf/d  
 70" 13 mcf/d  
 80" 14 mcf/d  
 90" 16 mcf/d

SIPs: 691-680#, FPs: 14-22#, 22-55#, HPs: 2052-2007#

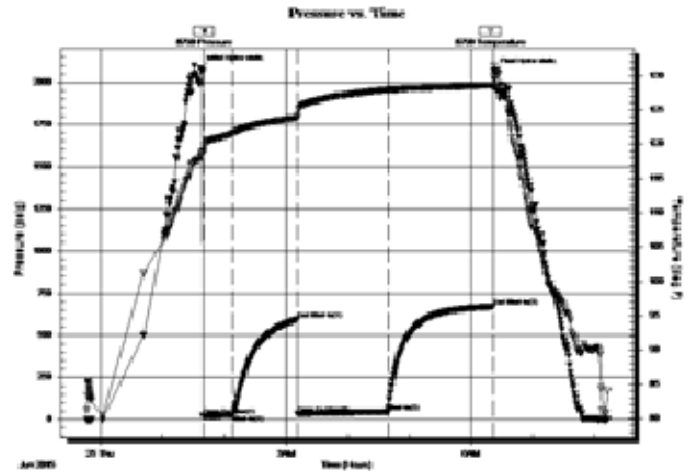


DST #3 MISSISSIPPIAN 4132'-4146'  
30"-60"-90"-90"

IF: BOB in 5min  
ISI: GTS on blow down, No blow back  
FF: BOB in 16min  
FSI: Blow back surf - 10"

Rec': 100' GOWCM (10% G, 5% O, 25% W, 60% M)

SIP: 595-671#, FP: 21-30#, 33-47#, HP: 2082-2063#



### ROCK TYPES

	Anhy		Gyp		Shgy		Sandylms
	Bent		Igne		Sltst		Shale
	Brec		Lmst		Ss		Sltstn
	Cht		Meta		Till		Shlyslts
	Clyst		Mrlst		Carb sh		Slttysh
	Coal		Salt		Dol		Lms
	Congl		Shale		Dtd		
	Dol		Shcol		Gry sh		

### ACCESSORIES

<b>MINERAL</b>		Salt		Fossil		Clystn	
	Anhy		Sandy		Gastro		Dol
	Arggrn		Silt		Oolite		Grysh
	Arg		Sil		Ostra		Gryslt
	Bent		Sulphur		Pelec		Lms
	Bit		Tuff		Pellet		Sandylms
	Brecfrag		Chlorite		Pisolite		Sh
	Calc		Dol		Plant		Sltstn
	Carb		Sand		Strom		
	Chtdk		Silty		Fuss		
	Chtlt				Oomold		
	Dol	<b>FOSSIL</b>		<b>STRINGER</b>		<b>TEXTURE</b>	
	Feldspar		Algae		Anhy		Boundst
	Ferrpel		Amph		Arg		Chalky
	Ferr		Belm		Bent		Cryxln
	Glau		Bioclst		Coal		Earthy
	Gyp		Brach		Dol		Finexln
	Hvymin		Bryozoa		Gyp		Grainst
	Kaol		Cephal		Ls		Lithogr
	Marl		Coral		Mrst		Microxln
	Minxl		Crin		Sltstrg		Mudst
	Nodule		Echin		Ssstrg		Packst
	Phos		Fish		Carbsh		Wackest
	Pyr		Foram				

OTHER SYMBOLS

POROSITY TYPE

- E Earthy
- Fenest
- F Fracture
- X Inter
- ⊕ Moldic
- Organic
- P Pinpoint
- ∇ Vuggy

SORTING

- W Well
- M Moderate
- P Poor

ROUNDING

- R Rounded
- r Subrnd
- a Subang
- A Angular

OIL SHOWS

- Even
- ⊙ Spotted
- ⊖ Ques
- Dead
- ⊗ Gas show

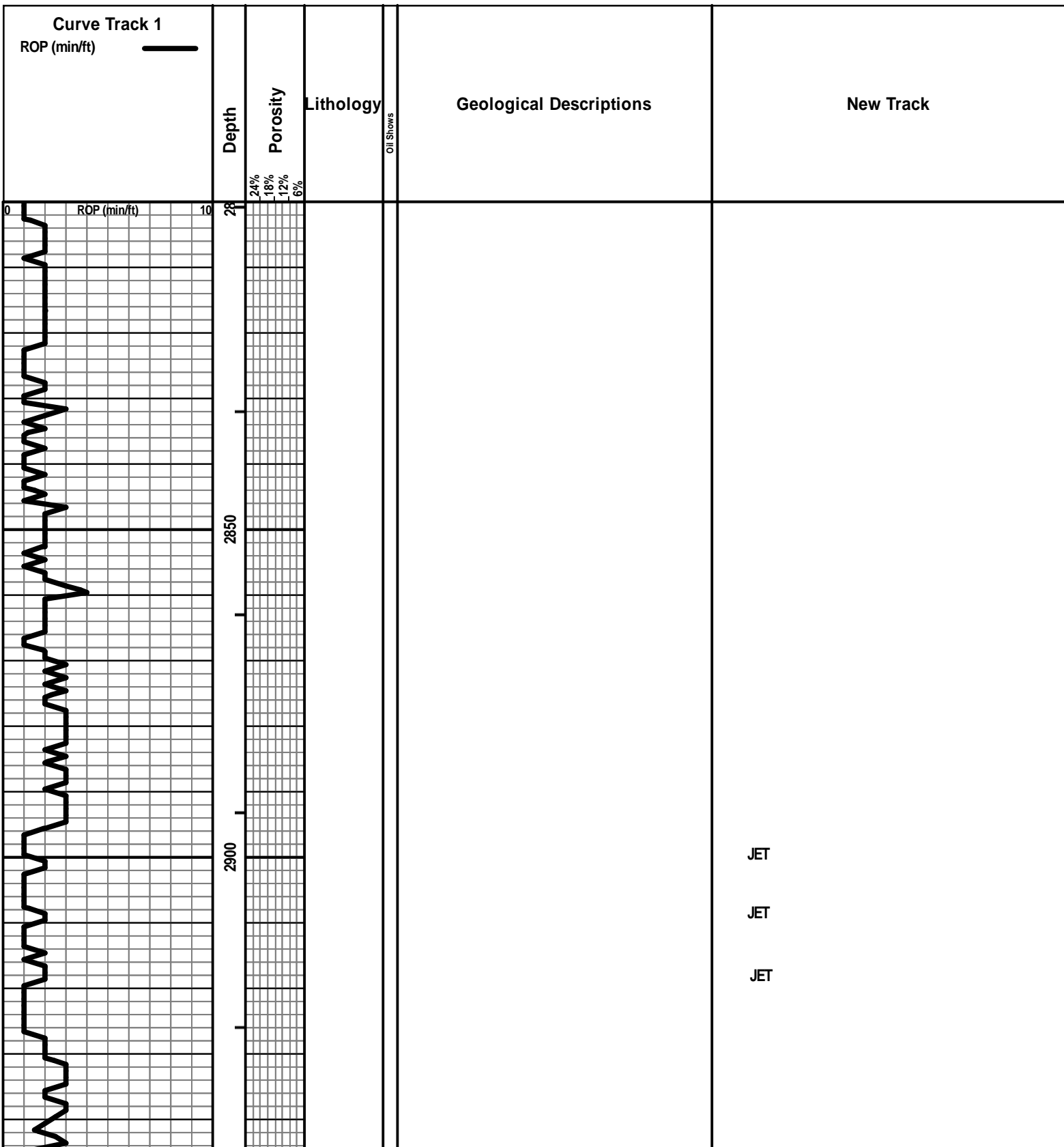
INTERVALS

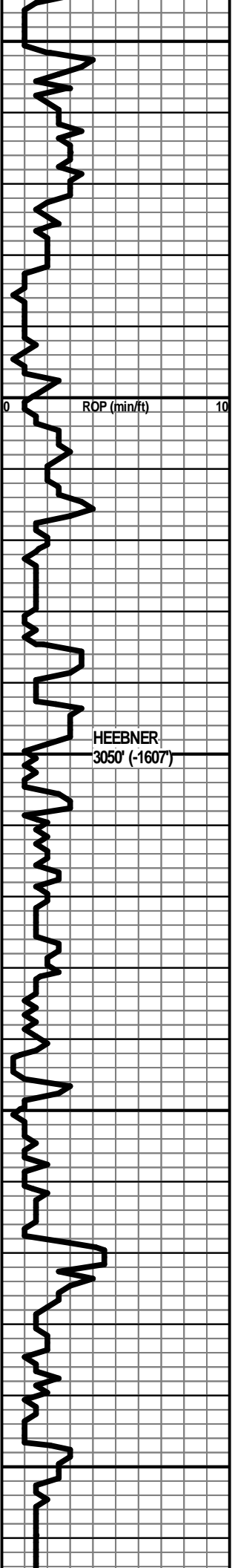
- Core
- Dst

- Dst

EVENTS

- ▽ Rft
- ▾ Sidewall
- ▬ Conn





2950  
3000  
3050  
3100  
3150



LS - TAN / GY, F XLN, MOD DNS / DNS

LS - GY, F XLN, MOD DNS / DNS, FOSS

SH - GRN / GY, SOFT

SH - BLK, SLI CARB

SH - LT GRN / LT GY, W/ LS - DK TAN, F XLN, V DNS, FOSS IN PT

SH - BLK, CARB

SH - GRN / GY

LS - CRM, TAN, F XLN, MOD DNS, W/ SH - GRN / GY

SS - CLR / WHT, FN GR, W CEM, SLI GLAUC, NS

SH - PRED GRN / GY IN PT

SS - CLR / WHT / GY, FN GR, W CEM, DNS, SLI GLAUC, NS

LS - CRM, VF / F XLN, SUBCHKY / MOD DNS

SH - GY, MOD SOFT

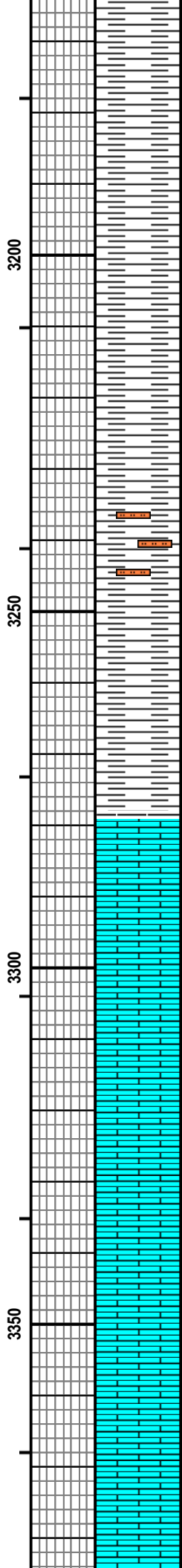
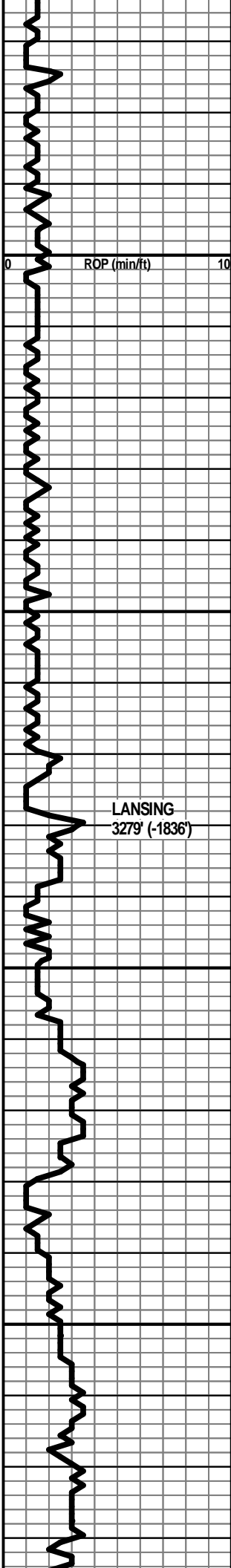
WT 8.7  
VIS 45  
LCM TRC

WT 8.7  
VIS 45  
LCM TRC

START PREMIX IN

WT 8.8  
VIS 46  
LCM 1/2#

WT 8.8  
VIS 48  
LCM 1#



SH - GRN / GY

SH - GY

SH - LT GY / DK GRN

SH - LT GY / LT GRN

SH - LT GY, SLTY

SH - GY, MOD DNS

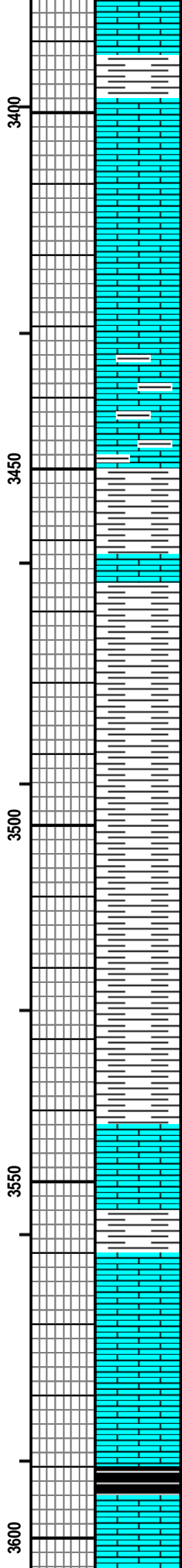
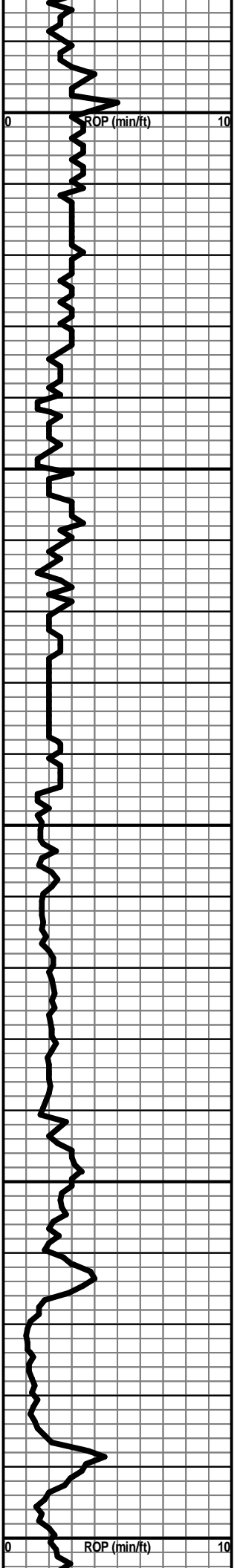
LS - TAN / BRN, F XLN, DNS, ABUND FOSS

LS - CRM / TAN, VF / F XLN, MOD DNS /  
SUBCHKY, CHKY IN PT, FOSS IN PT,  
STYLOLITIZED

LS - TAN, F XLN, DNS, FOSS

LS - GY, F XLN, MOD DNS / DNS, FOSS

LS - TAN / GY, VF / F XLN, MOD DNS, FOSS IN PT



LS - TAN / GY, VF / F XLN, MOD DNS, ABUND FOSS

SH - GRN / GY

LS - TAN, F XLN, DNS

LS - GY / TAN, F XLN, MOD DNS, SHLY - GY / LT GRN / DK GRN

SH - LT GRN

SH - LT GY / DK GY

SH - GY

SH - GY

SH - DK GY

LS - GY, F XLN, DNS, FOSS (CRI), W/ SH - GY

LS - GY / TAN, F XLN, DNS

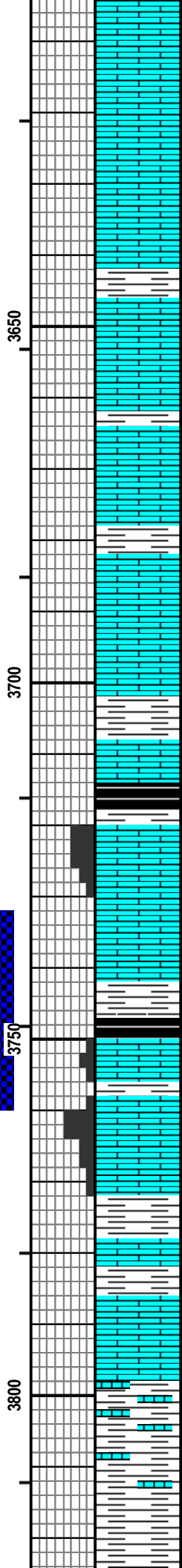
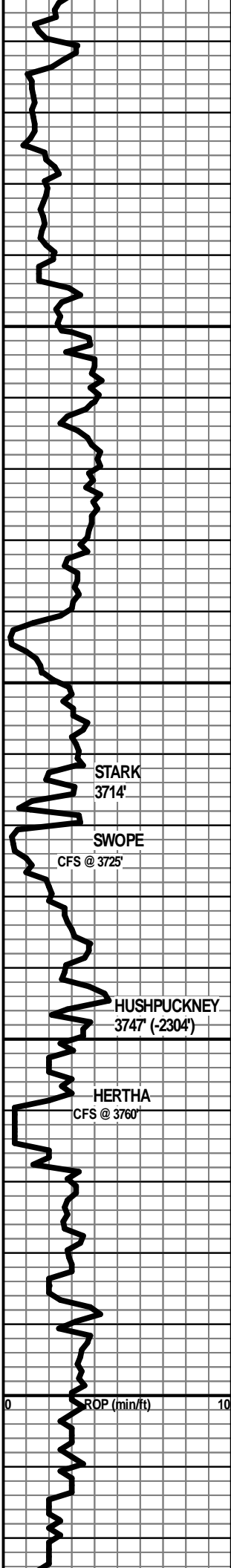
LS - TAN / CRM / WHT, VF / F XLN, SUBCHKY / CHKY IN PT

SH - BLK, SLI CARB

PICK UP PIT MUD

WT 9.2  
VIS 45  
LCM TRC

WT 9.2



LS - CRM / TAN, VF / F XLKN, SUBCHKY / MOD  
DNS, FOSS, FOSS RPLCD BY CALCITE

LS - TAN / GY, F XLN, DNS

LS - TAN, VF / F XLN, SLI DNS, FOSS IN PT

SH - RD / RDSH ORNG / MAR / GRN

LS - TAN, VF / F XLN, MOD DNS

SH - MAR / GRN / GY

LS - TAN / GY, F XLN, FOSS + OOL, NO VIS POR,  
NS

SH - PRED LT GRN / DK GRN

SH - BLK, CARB, PYRITIC I N PT, W/ SH - GY

LS - TAN, F XLN, F / G OOL POR, NS, NO ODOR,  
ABUND OOLITES

LS - TAN / GY, F XLN, DNS

SH - GY

SH - BLK, CARB

LS - TAN / GY, F XLN, P / F INTXLN POR, FSFO,  
LT BRN OIL, BLK STN IN PT, F ODOR, YEL-GRN  
FLUOR

LS - BRN / GY, F XLN, OOMOLDIC POR, ABUND  
OF OOLITES, FOSS IN PT, NS, NO ODOR, NO  
FLUOR

SH - GY

LS - TAN / BRN, F XLN, V DNS

SH - LT GRN / GY

LS - TAN, F XLN, DNS

SH - GRN / GY, LMY IN PT, DNS

SH - GRN / GY, SOFT

SH - GY / BLK, FOSS IN PT

VIS 45  
LCM TRC

WT 9.2  
VIS 49  
LCM TRC

WT 9.3  
VIS 51

@ 3749' CIRC FOR 1 1/2 HRS, TOH, HUNG BIT  
AND COLLARS IN HOLE FOR 1 WEEK B/C OF  
MUDDY LOCATION, RESUMED DRLG 6/22 @  
5PM

WT 8.9  
VIS 44  
LCM 0

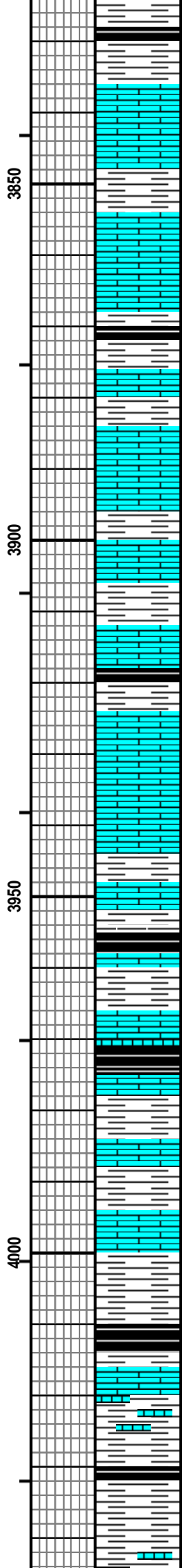
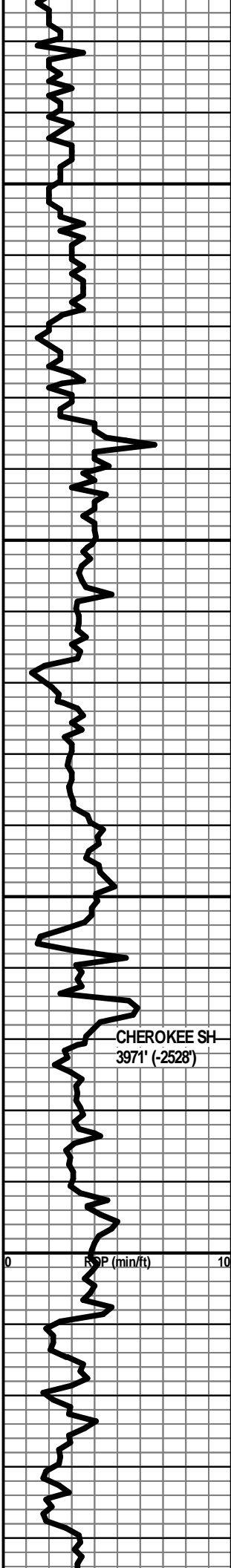
DST #1  
HERTHA  
3732'-3760'  
30"-60"-30"-60"

IF: Weak surface blow - 3"  
ISI: No blow  
FF: No blow, Flushed tool 15min, surf- 1"  
FSI: No blow

Rec: 60' MCW (30% M, 70% W)

IH: 1810#  
IF: 16#-31#  
ISI: 1283#  
FF: 33#-45#  
FSI: 1280#  
FL: 1710#



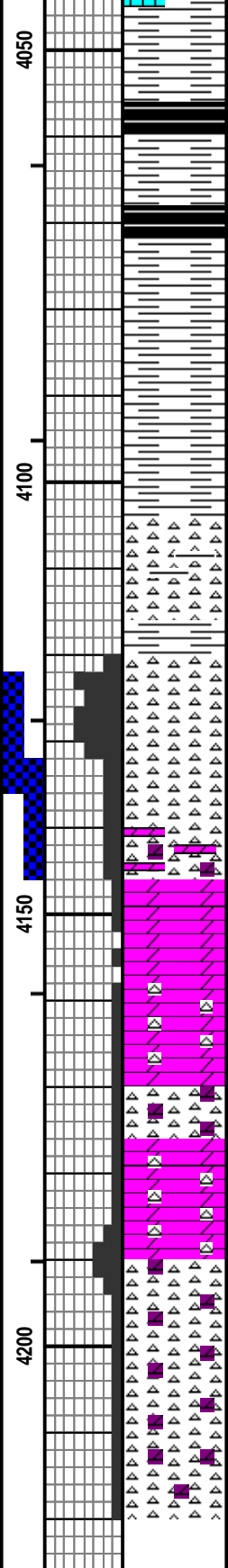
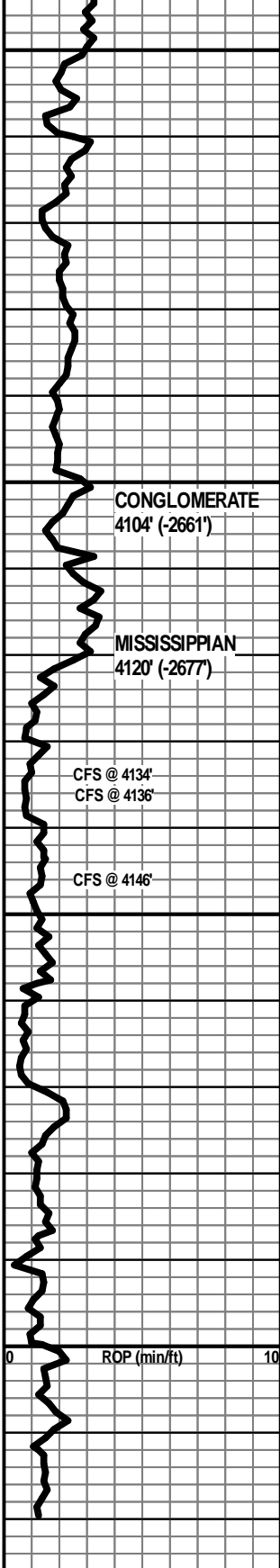


SH - GY / BLK, FOSS IN PT  
 SH - BLK, SLI CARB  
 SH - GY  
 LS - TAN / LT GY, F XLN, DNS  
 SH - RD / MAR / RD-ORNG  
 SH - MAR / GRN, W/ LS - TAN / GY, F XLN, DNS  
 LS - TAN / BRN, F XLN, V DNS, ABUND FOSS  
 SH - GY, SOFT  
 SH - BLK  
 SH - RD / GRN, W/ LS - TAN, VF / F XLN  
 LS - TAN / BRN, F XLN, DNS  
 SH - GY, SOFT, W/ LS - TAN / GY, VF / F XLN  
 SH - RD / MAR / GRN / GY, W/ LS - CRM / TAN, VF XLN, MOD DNS  
 LS - TAN / GY, F XLN, DNS, FOSS IN PT  
 SH - BLK, CARB  
 SH - GY  
 LS - TAN / BRN, F XLN, DNS  
 SH - RD / MAR / GRN, W/ LS - CRM / TAN, VF / F XLN, MOD DNS  
 SH - BLK, CARB  
 SH - GY  
 LS - CRM / TAN, VF / F XLN, MOD DNS / SUBCHKY  
 SH - BLK, CARB, W/ LS - BRN, VF / F XLN, MOD DNS, FOSS, W/ SH - GRN / GY  
 SH - GRN / GY  
 LS - TAN, VF / F XLN, MOD DNS / SUBCHKY, FOSS  
 SH - GY  
 SH - BLK, CARB, W/ SH - GY  
 LS - GY, F XLN, V DNS  
 SH - GRN, LMY IN PT W/ FOSS (CRI), PYRITIC IN PT  
 SH - BLK, CARB  
 SH - LT GY  
 SH - LT GY / LT GRN / MAR IN PT. LMY IN PT

WT 9.1  
VIS 50

WT 9.1  
VIS 54

WT 9.1  
VIS 68  
1# ADDED 15  
HULLS LCM



MOD DNS IN PT

SH - LT GRN / GY

SH - BLK, CARB

SH - GY

SH - BLK, CARB

SH - LT GY / DK GY

SH - MAR / GRN / GY

SH - LT GY

SH - LT GY, DNS

CHT - LT GY / GRN / TAN, TRANSLCNT + OPAQ, V DNS, SHLY IN PT, NO POR, NS, NO ODOR, NO FLUOR

SH - MAR / GRN / GY  
 CHT - WHT, OPAQ, WEATH, P / F TRIP POR, FSFO, SHOW OF GAS BUBBLES, F ODOR, G YEL-GRN FLUOR

CHT - WHT / TAN, OPAQ, WEATH, F / G TRIP POR, FSFO, FSG BUBBLES, F ODOR, F ODOR, G YEL-GRN FLUOR

CHT - OFF-WHT, PRED WEATH, SLI DOLOMITIC, F / G TRIP POR, GSFO, FSG BUBBLES, G ODOR, V G YEL-GRN FLUOR, 4139'-46' - CHT - OFF WHT - DOLOMITIC, DNS, SLI BRN STN IN PT, SLI ODOR, NO FLUOR

DOLO - OFF WHT / WHT / TAN, VF XLN, SUBCHKY / DNS, V DNS IN PT, SLT LT BRN STN IN PT, POR POR IN PT, NSFO, NO ODOR, NO FLUOR

DOLO - OFF WHT / TAN, VF / F XLN, SUBCHKY / CHKY, NS, NO ODOR, NO FLUOR

DOLO - OFF WHT / TAN, F XLN, CHTLTC, DNS, NS

DOLO - OFF WHT / TAN, F XLN, V CHTLTC, V DNS, NS

CHT - OFF WHT / TAN, FRSH, DOLOMTC, DNS, NS

CHT - OFF WHT / GY, FRSH, DOLOMTC, DNS, NS

CHT - OFF WHT / GY, FRSH, SLI DOLOMTC, DNS, NS

**RTD 4220'**

**DST #2**  
**MISSISSIPPIAN**  
 4123'-4136'  
 30" -60" -90" -90"

IF: BOB in 1 1/2min  
 ISI: No blow  
 FF: BOB immed. GTS @ 35min. Guaged  
 FSI: No blow

Rec: 45' Drlg mud (100% M)

FF @ 35 min GTS:  
 40" 10 mcf/d  
 50" 11 mcf/d  
 60" 12 mcf/d  
 70" 13 mcf/d  
 80" 14 mcf/d  
 90" 16 mcf/d

IH: 2052#  
 IF: 14#-22#  
 ISI: 691#  
 FF: 22#-55#  
 FSI: 680#  
 FH: 2007#

WT 9.3  
 VIS 57  
 LCM 1/2#

**DST #3**  
**MISSISSIPPIAN**  
 4132'-4146'  
 30" -60" -90" -90"

IF: BOB in 5min  
 ISI: GTS on blow down, No blow back  
 FF: BOB in 16min  
 FSI: Blow back surf - 10"

Rec: 100' GOWCM (10% G, 5% O, 25% W, 60% M)

IH: 2082#  
 IF: 21#-30#  
 ISI: 595#  
 FF: 33#-47#  
 FSI: 671#  
 FH: 2063#

WT 9.0  
 VIS 57  
 LCM 1 1/2#

Pipe strap 1.27'  
 short to board.