



**TRILOBITE TESTING, INC.**

# DRILL STEM TEST REPORT

Bickle Energies, LLC  
 2052 250th Ave  
 Hays, KS 67601  
 ATTN: Eli Felts

**35-5S-37W Cheyenne, KS**

**Beaver Creek #35-1**

Job Ticket: 65222      **DST#: 1**  
 Test Start: 2015.09.11 @ 20:16:00

## GENERAL INFORMATION:

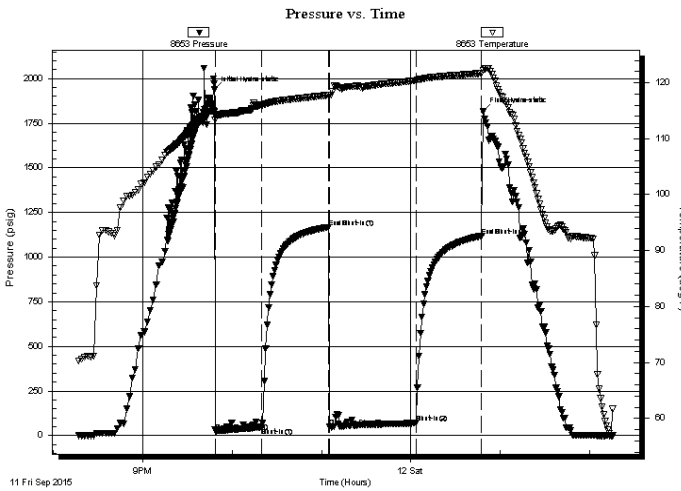
Formation: **Tarkio**  
 Deviated: No Whipstock:                      ft (KB)  
 Time Tool Opened: 21:48:40  
 Time Test Ended: 02:16:00  
 Interval: **3920.00 ft (KB) To 4004.00 ft (KB) (TVD)**  
 Total Depth: 4004.00 ft (KB) (TVD)  
 Hole Diameter: 7.88 inches Hole Condition: Good  
 Test Type: Conventional Bottom Hole (Initial)  
 Tester: Kevin Mack  
 Unit No: 82  
 Reference Elevations: 3385.00 ft (KB)  
 3372.00 ft (CF)  
 KB to GR/CF: 13.00 ft

## Serial #: 8653

**Outside**

Press@RunDepth: 71.25 psig @ 3925.00 ft (KB)      Capacity: 8000.00 psig  
 Start Date: 2015.09.11      End Date: 2015.09.12      Last Calib.: 2015.09.12  
 Start Time: 20:16:00      End Time: 02:16:00      Time On Btm: 2015.09.11 @ 21:48:20  
 Time Off Btm: 2015.09.12 @ 00:48:30

**TEST COMMENT:** 30 - IF- 1/4" Blow built to 2"  
 45 - ISI- No Return  
 60 - FF- Surface Blow started at 10 min. Built to 1"  
 45 - FSI- No Return



## PRESSURE SUMMARY

Time (Min.)	Pressure (psig)	Temp (deg F)	Annotation
0	1937.25	114.65	Initial Hydro-static
1	26.19	113.99	Open To Flow(1)
32	43.51	115.99	Shut-In(1)
77	1167.63	117.79	End Shut-In(1)
78	49.28	117.72	Open To Flow(2)
136	71.25	120.39	Shut-In(2)
180	1119.51	121.68	End Shut-In(2)
181	1814.44	122.21	Final Hydro-static

## Recovery

Length (ft)	Description	Volume (bbl)
120.00	Mud 100M	0.59

## Gas Rates

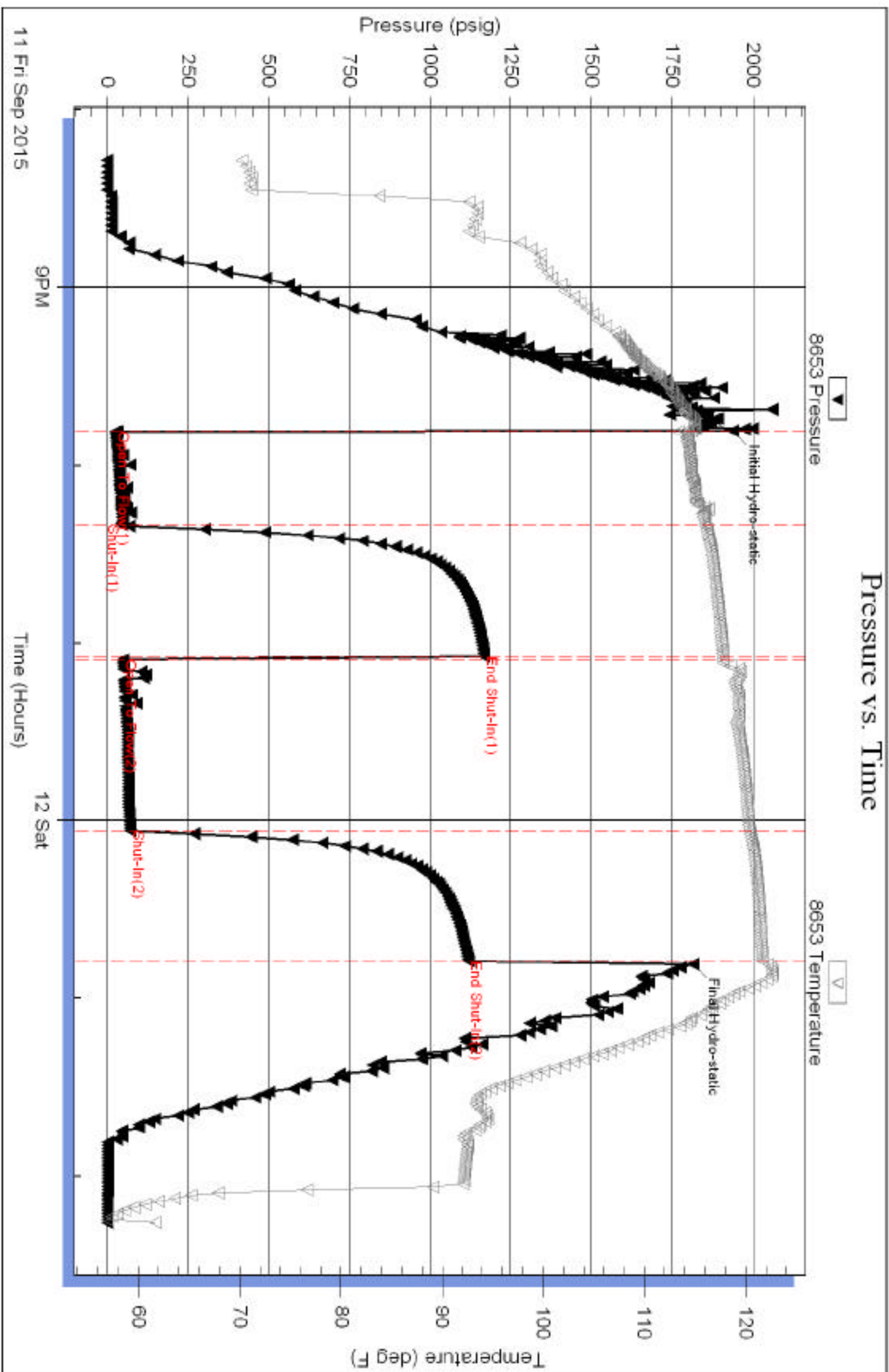
Choke (inches)	Pressure (psig)	Gas Rate (Mcf/d)

Serial #: 8653

Outside Bickle Energies, LLC

Beaver Creek #35-1

DGT Test Number: 1



Trickle Testing, Inc

Ref. No: 65222

Printed: 2015.09.12 @ 02:30:04