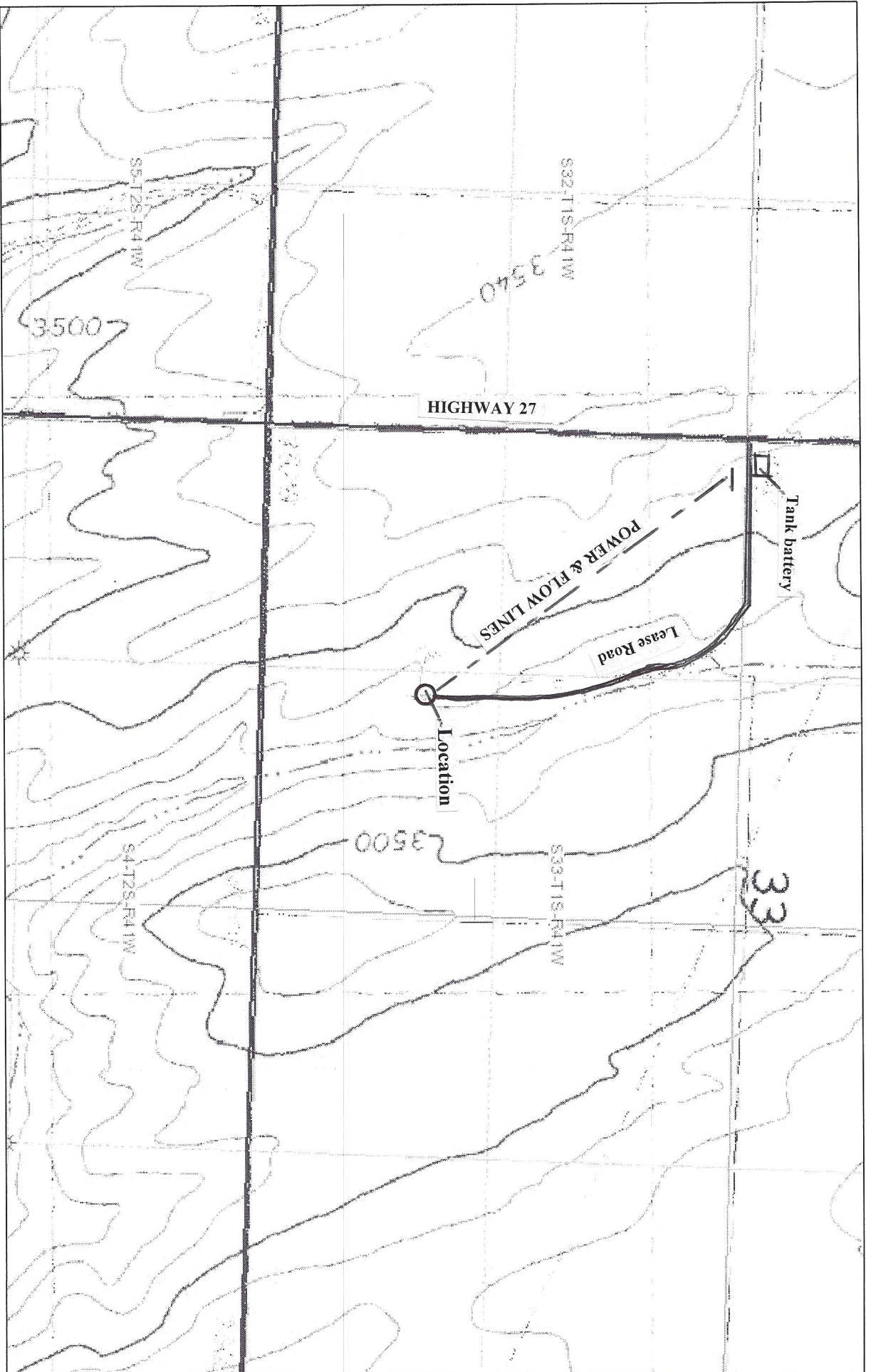
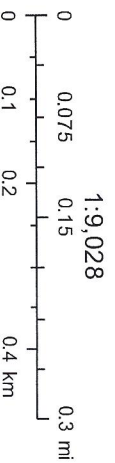


RATH-NEWMAN



October 1, 2015

SWNWSESW SEC 33 T1S, R41W
CHEYENNE COUNTY, KANSAS



Sources: Esri, HERE, DeLorme, Intermap, increment P Corp., GEBCO, USGS, FAO, NPS, NRCAN, Geobase, IGN, Kadaster NL, Ordnance Survey,