

CEMENT BOND LOG

Company MIKE KELSO OIL, INC
 Well SCHROEDER "B" #3
 Field STOLTENBERG
 County ELLSWORTH State KANSAS

Company MIKE KELSO OIL, INC
 Well SCHROEDER "B" #3
 Field STOLTENBERG
 County ELLSWORTH
 State KANSAS

Location 1720' FNL & 330' FWL
 SEC. 29 TWP. 17S RGE. 9W
 Permanent Datum GROUND LEVEL Elevation 1751
 Log Measured From KELLY BUSHING 5' AGL
 Drilling Measured From KELLY BUSHING
 Other Services K.B. 1756
 D.F.
 G.L. 1751

Date	08-26-2015		08-26-2015				
Run Number	ONE	ONE					
Depth Driller	3295						
Depth Logger	3255	1400					
Bottom Logged Interval	3254	1399					
Top Log Interval	2028	250					
Open Hole Size	WATER		WATER				
Type Fluid	WATER		WATER				
Density / Viscosity							
Max. Recorded Temp.							
Estimated Cement Top	2228						
Time Well Ready							
Time Logger on Bottom							
Equipment Number	52						
Location	GREAT BEND						
Recorded By	LEE BRETZ						
Witnessed By	MR. MIKE KELSO						
Borehole Record		Tubing Record					
Run Number	Bit	From	To	Size	Weight	From	To
Casing Record	Size	Wgt/Ft		Top	Bottom		
Surface String	8.625			0	448		
Prot. String							
Production String	5.5			0			
Liner							

<<< Fold Here >>>

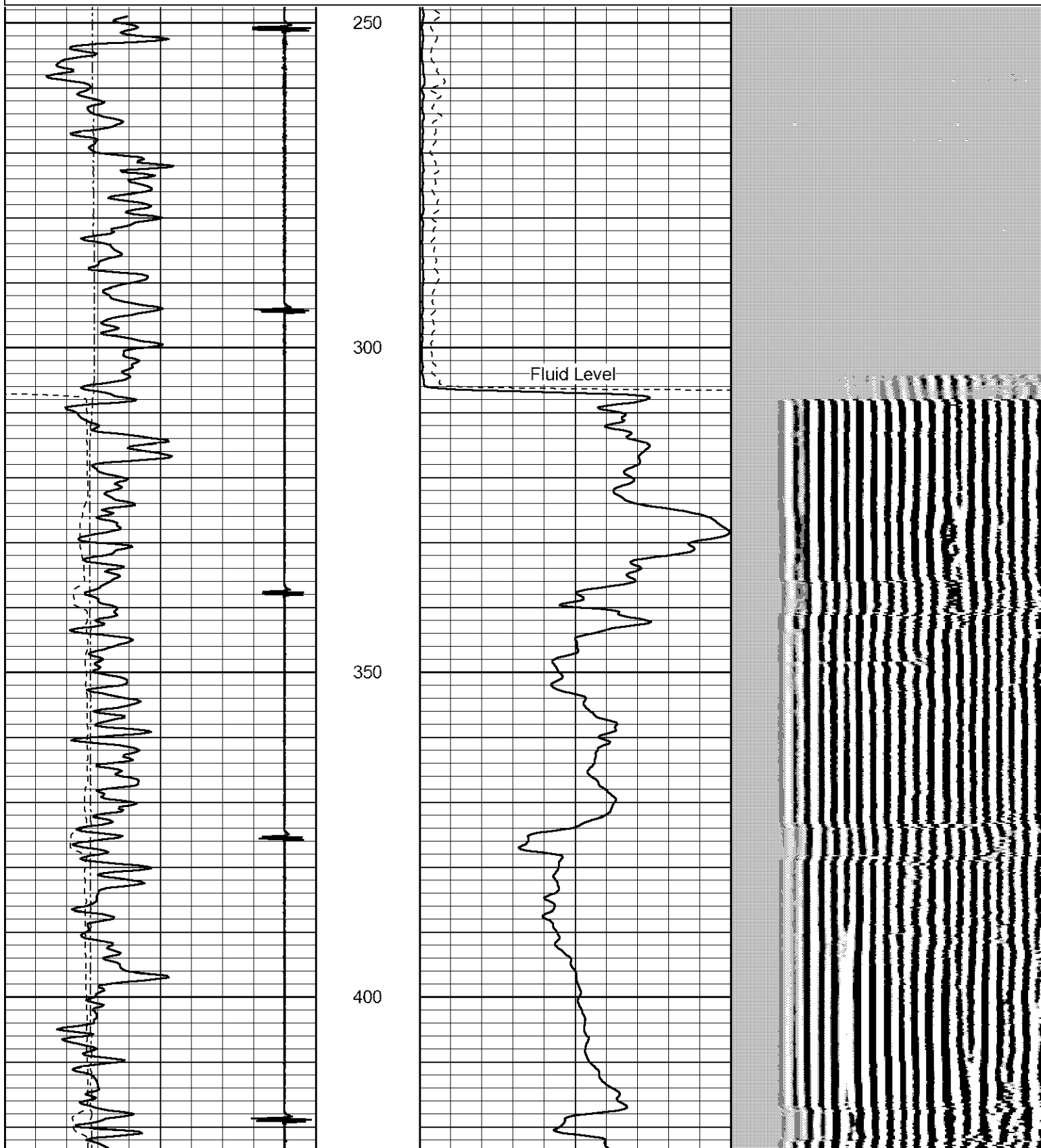
All interpretations are opinions based on inferences from electrical or other measurements and we cannot and do not guarantee the accuracy or correctness of any interpretation, and we shall not, except in the case of gross or willful negligence on our part, be liable or responsible for any loss, costs, damages, or expenses incurred or sustained by anyone resulting from any interpretation made by any of our officers, agents or employees. These interpretations are also subject to our general terms and conditions set out in our current Price Schedule.

Comments

THANK YOU FOR USING LOG TECH OF KANSAS!
 (620)792-2167
 DIRECTIONS HWY 4 & CHASE BLACKTOP
 2 MILES NORTH EAST INTO

Database File: schroederb3.db
 Dataset Pathname: pass5
 Presentation Format: cbl02
 Dataset Creation: Wed Aug 26 16:18:14 2015 by Log 7.0 B1
 Charted by: Depth in Feet scaled 1:240

9	Collar Locator	-1	0	Amplitude (mV)	100	200	VARIABLE DENSITY	1200
0	Gamma Ray (GAPI)	150	0	X5 Amplitude (mV)	20			
320	TT3 (usec)	120	-----					
0	LTEN (lb)	1500	-----					



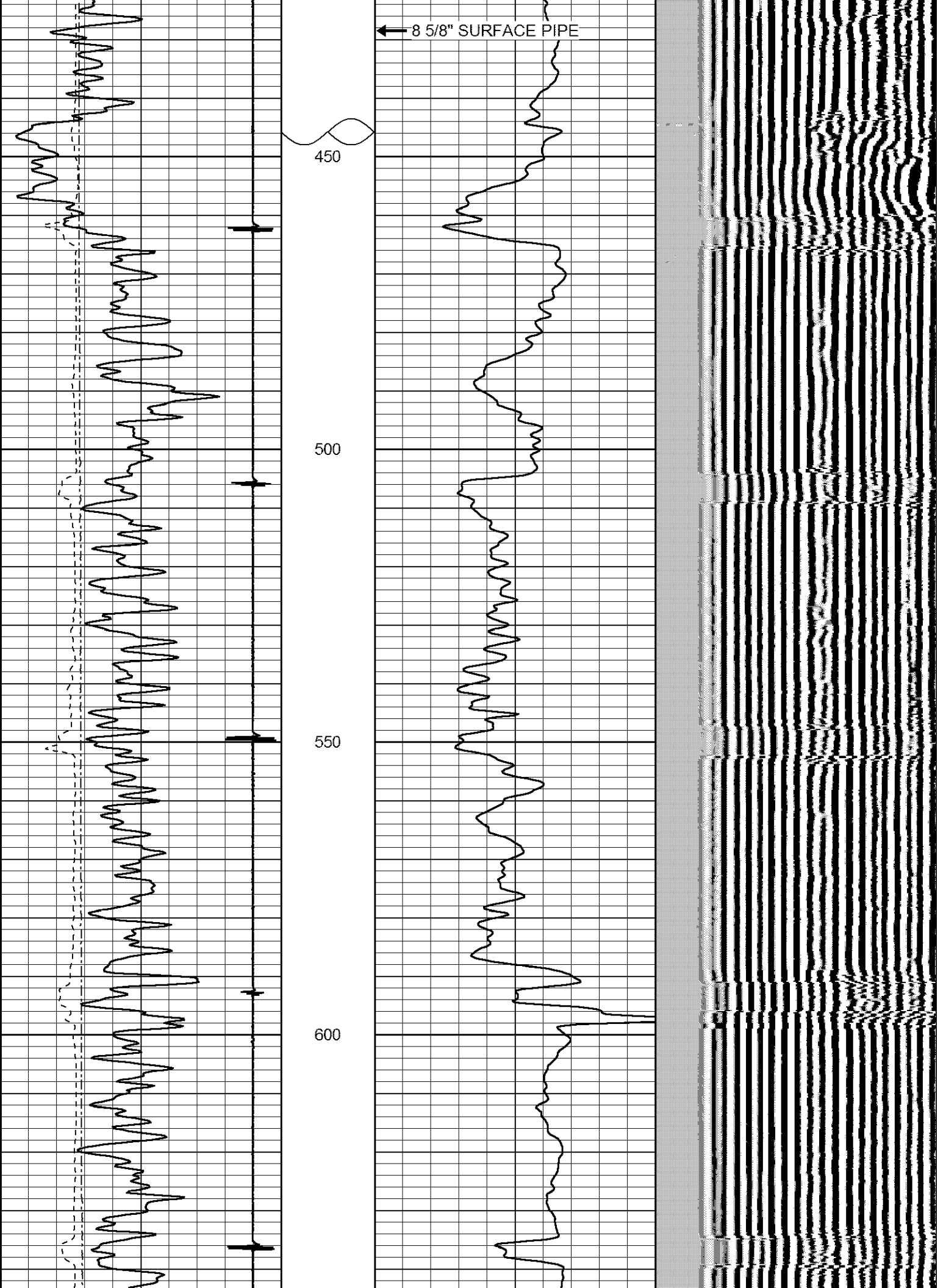
← 8 5/8" SURFACE PIPE

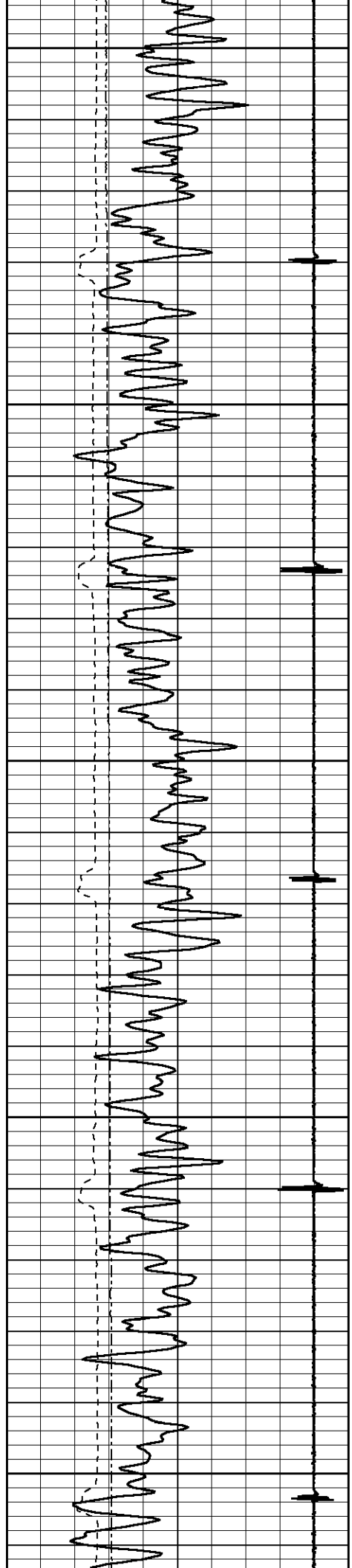
450

500

550

600





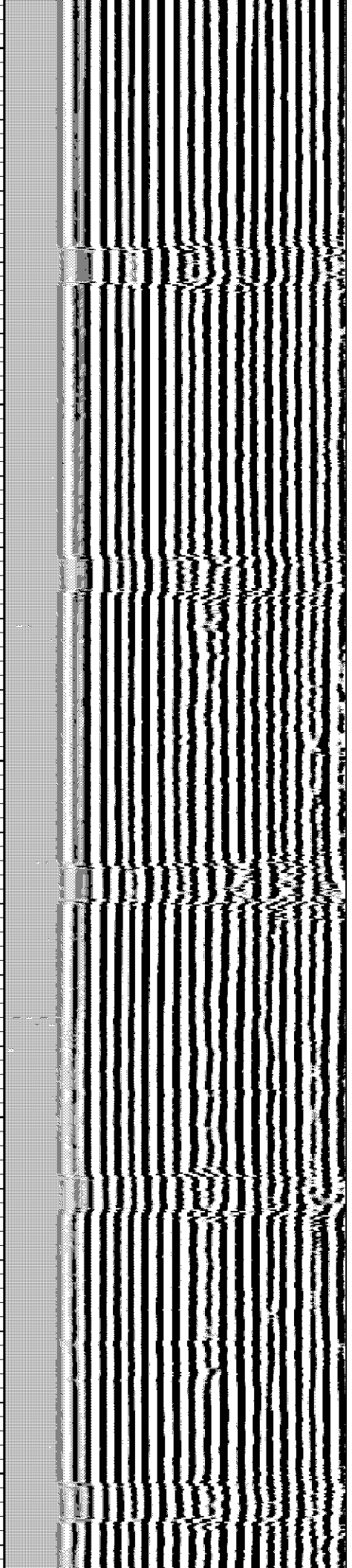
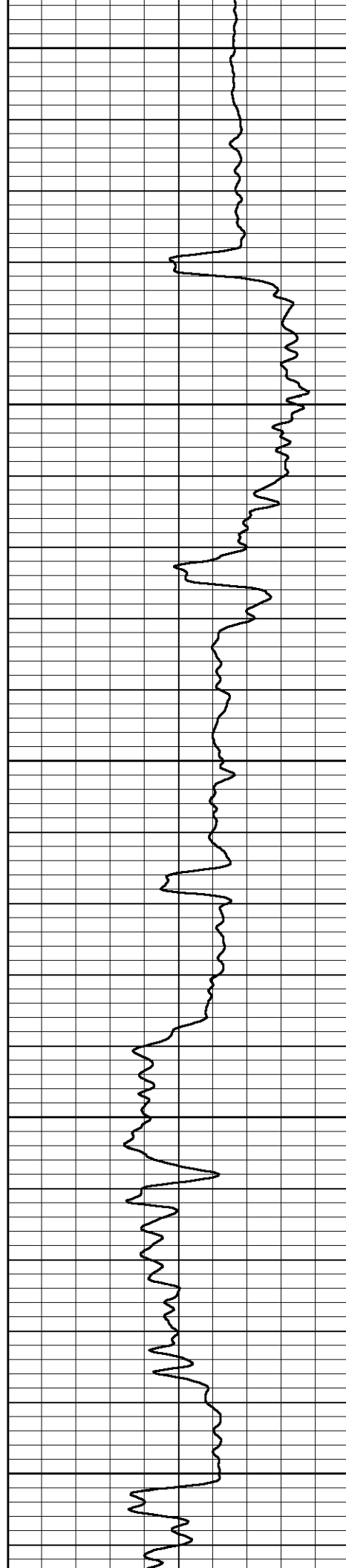
650

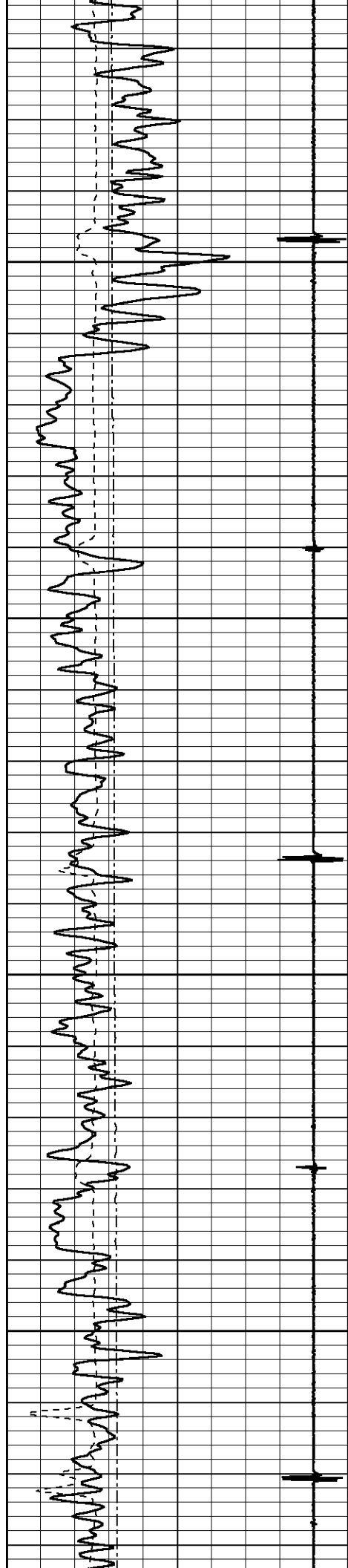
700

750

800

850



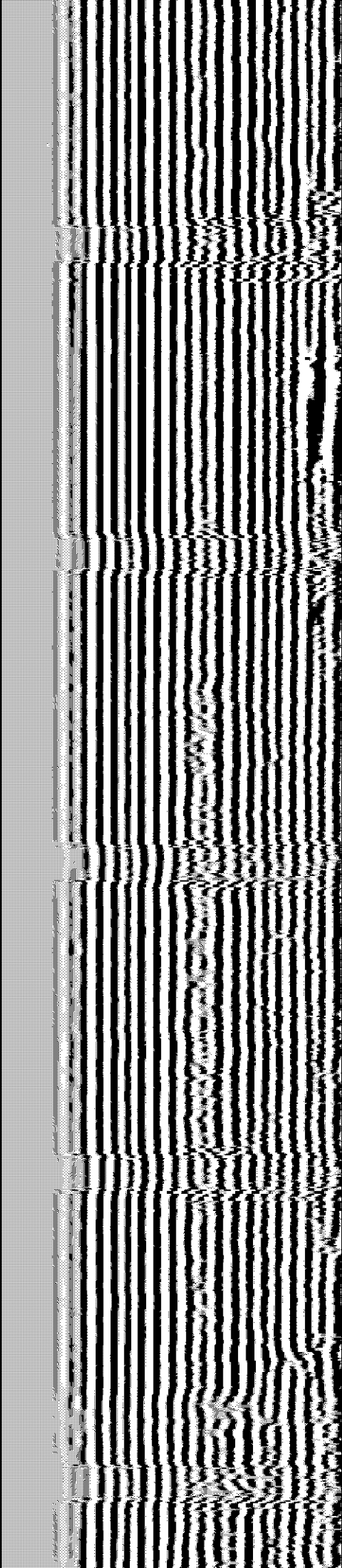
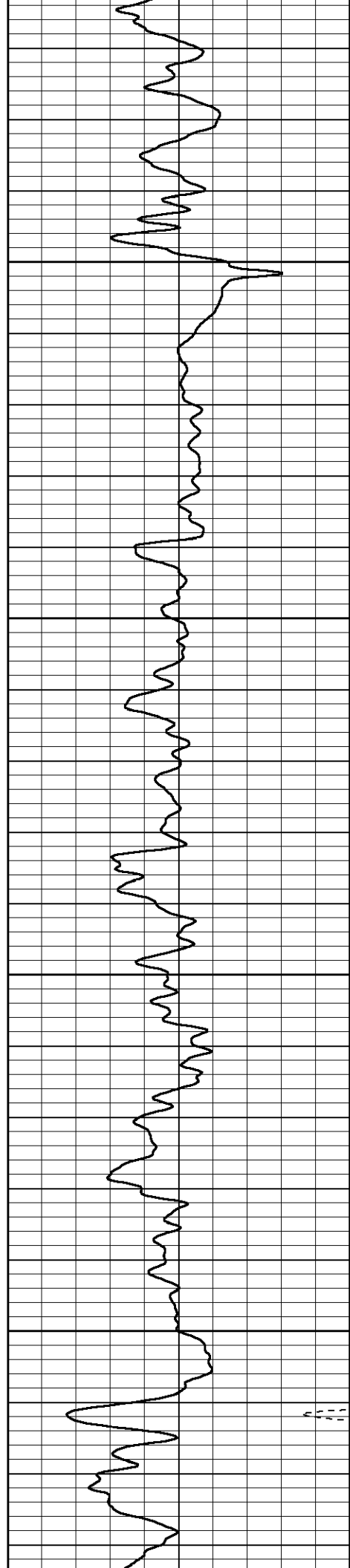


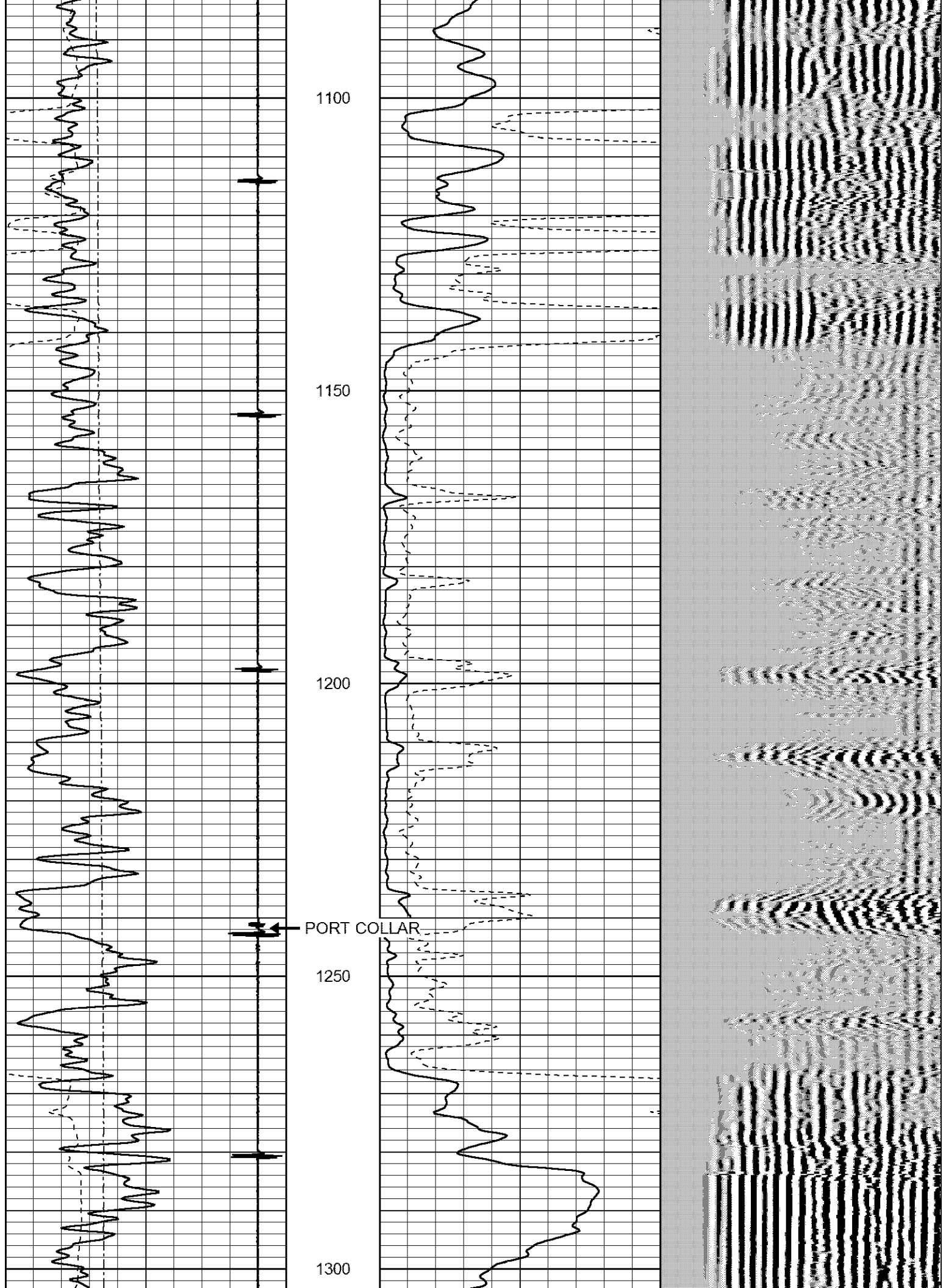
900

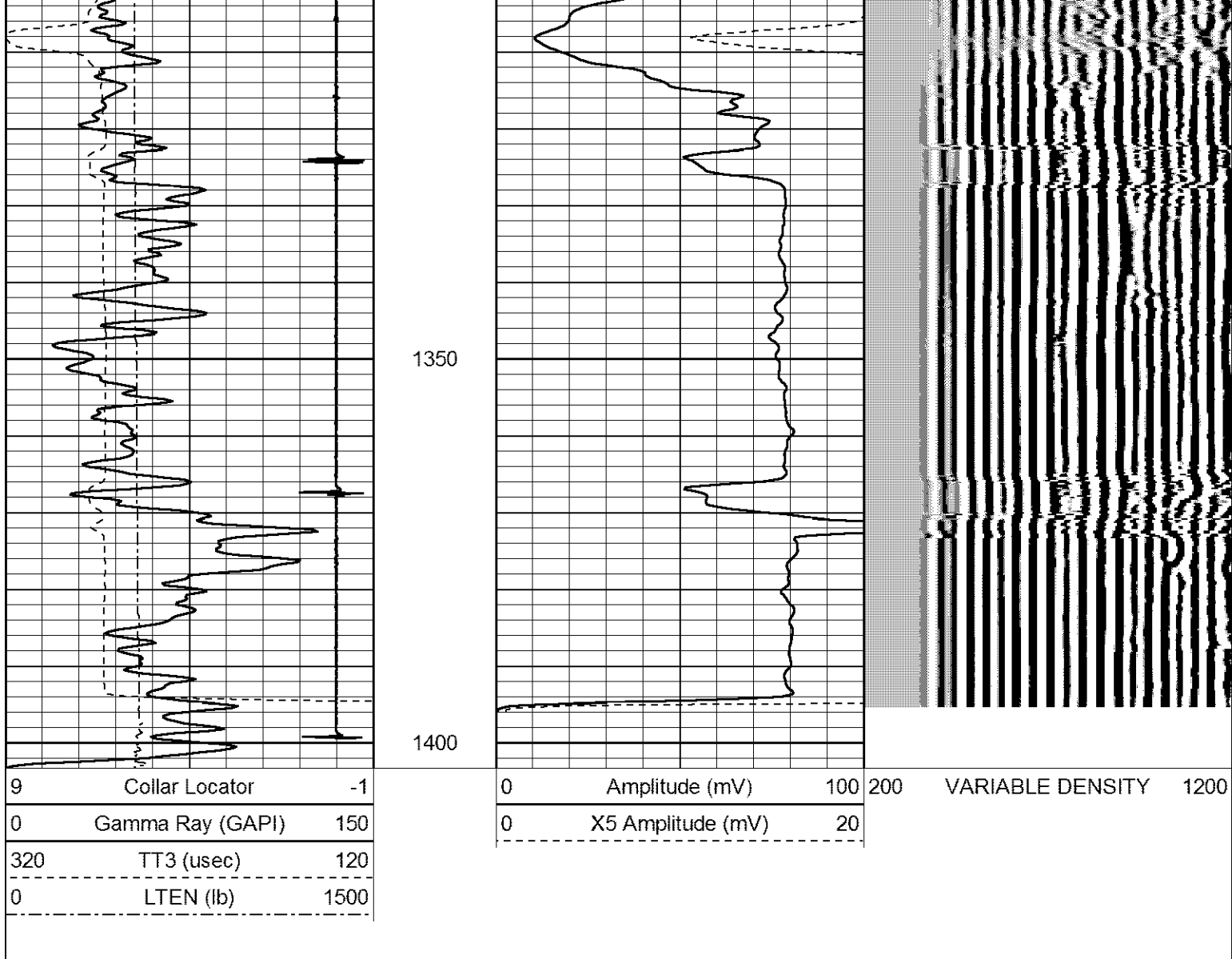
950

1000

1050







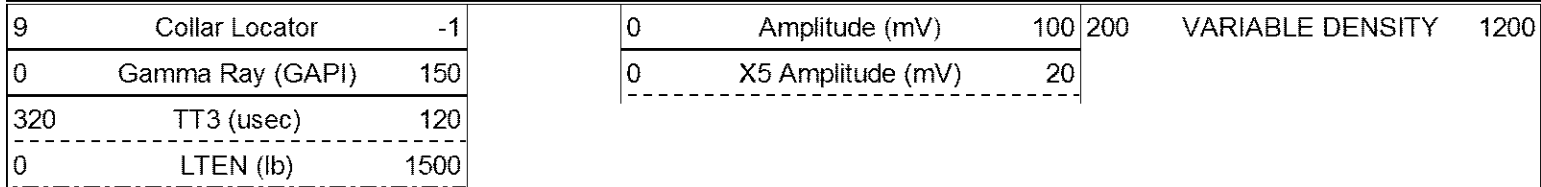
LOG-TECH

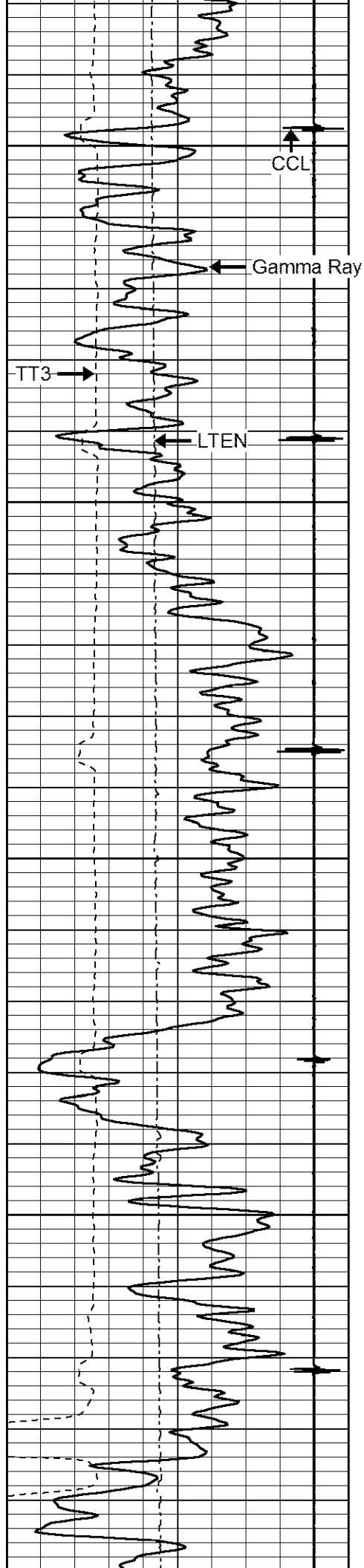
of Kansas
Inc.

GREAT BEND, KANSAS

MAIN PASS

Database File: schroederb3.db
 Dataset Pathname: pass4
 Presentation Format: cbl02
 Dataset Creation: Wed Aug 26 15:43:27 2015 by Log 7.0 B1
 Charted by: Depth in Feet scaled 1:240





2050

CCL

Gamma Ray

TT3

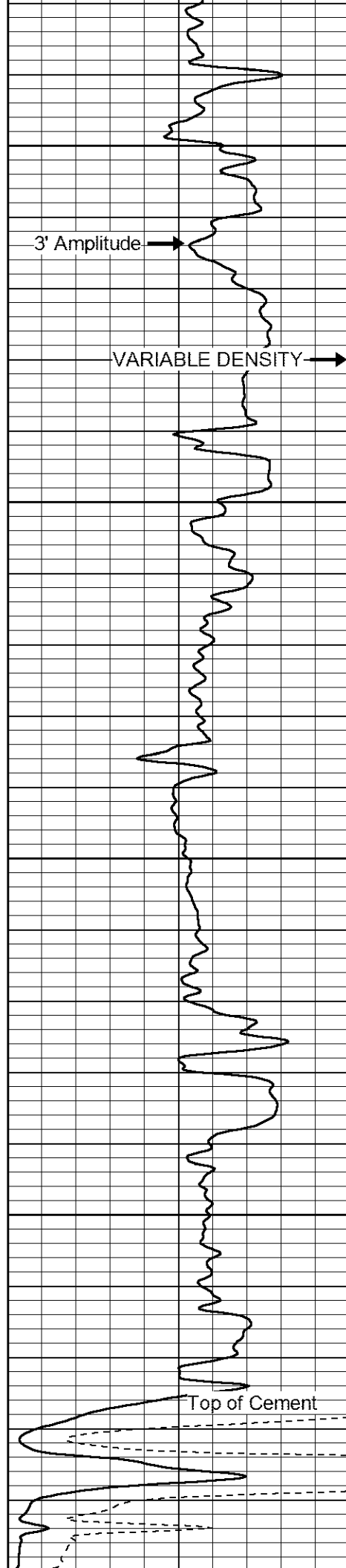
LTEN

2100

2150

2200

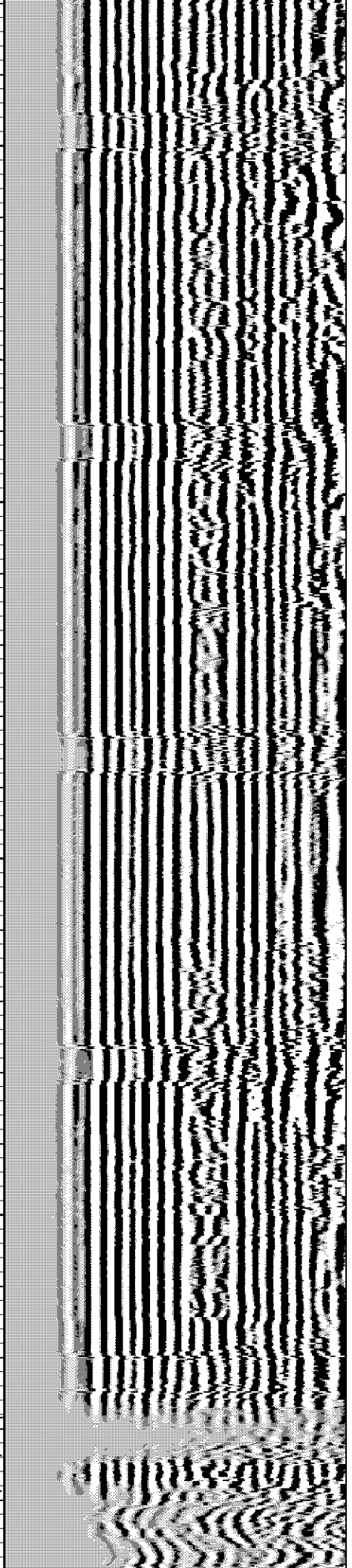
2250

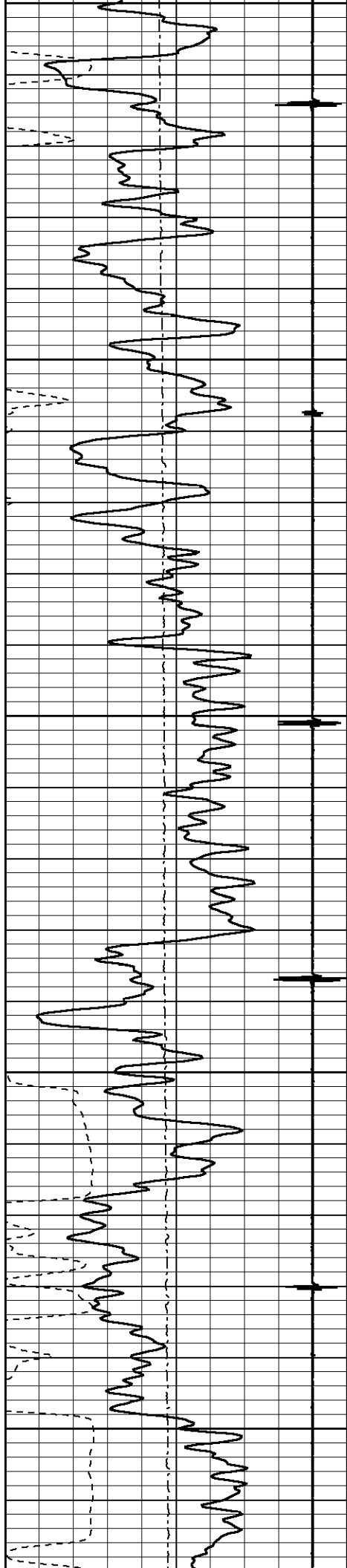


3' Amplitude

VARIABLE DENSITY

Top of Cement





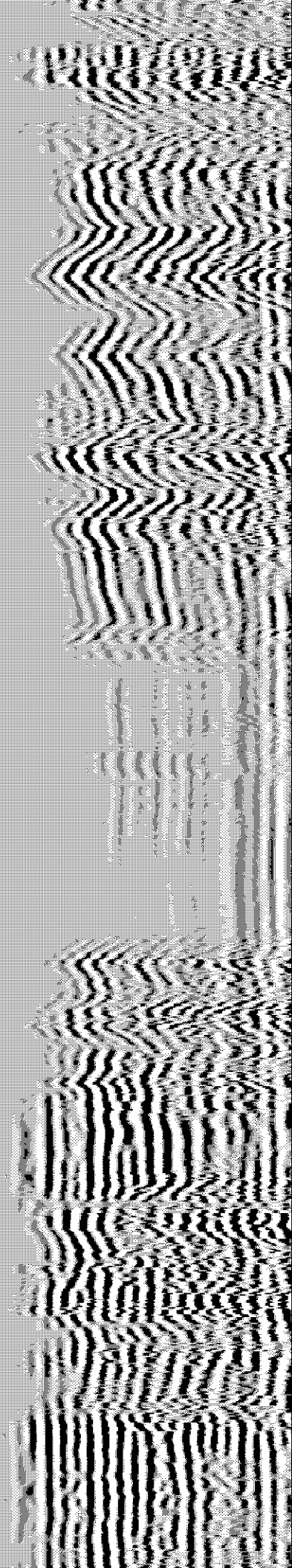
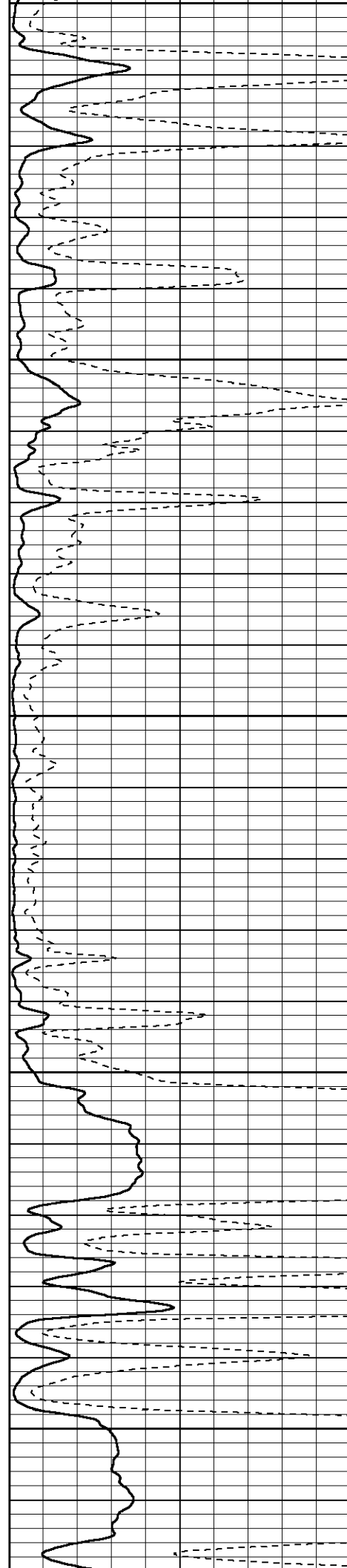
2250

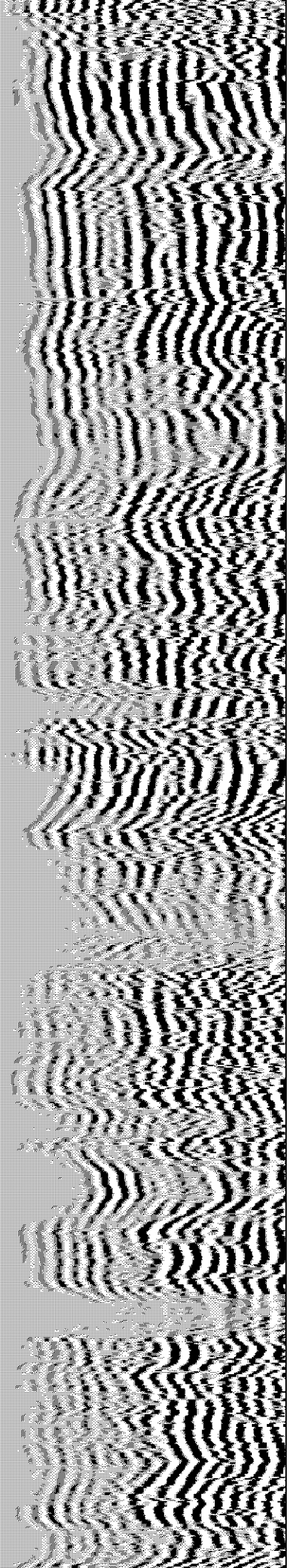
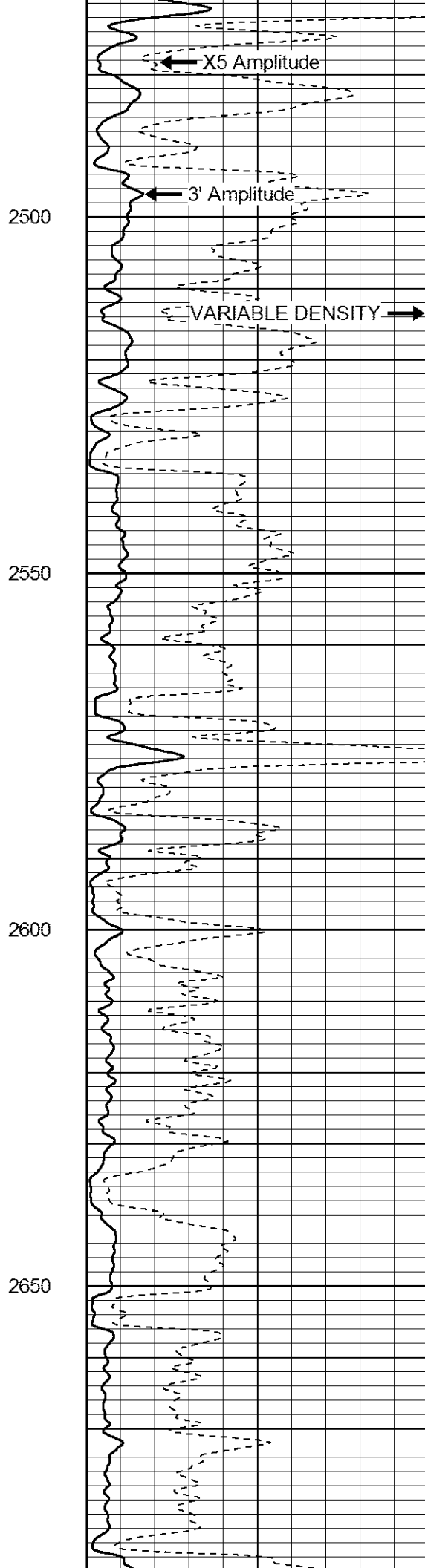
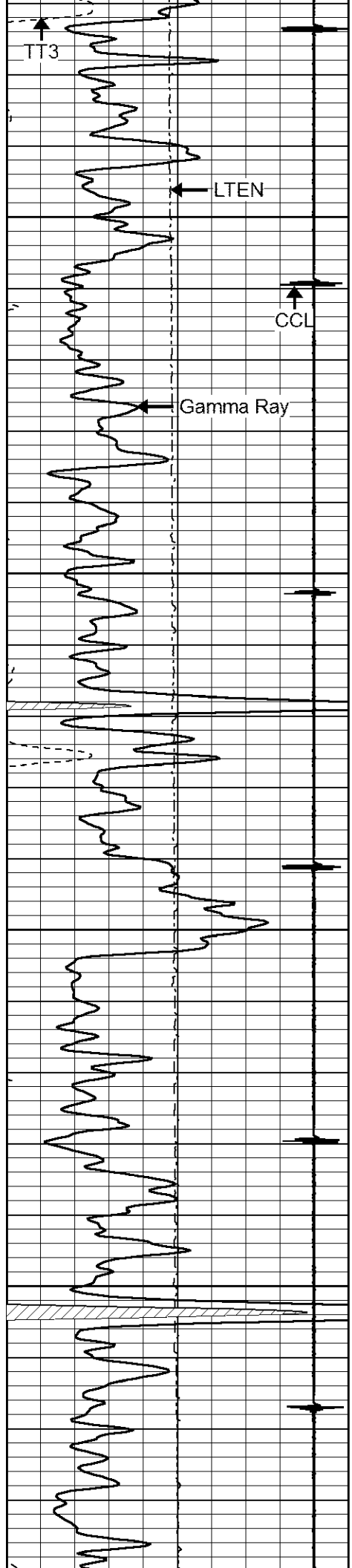
2300

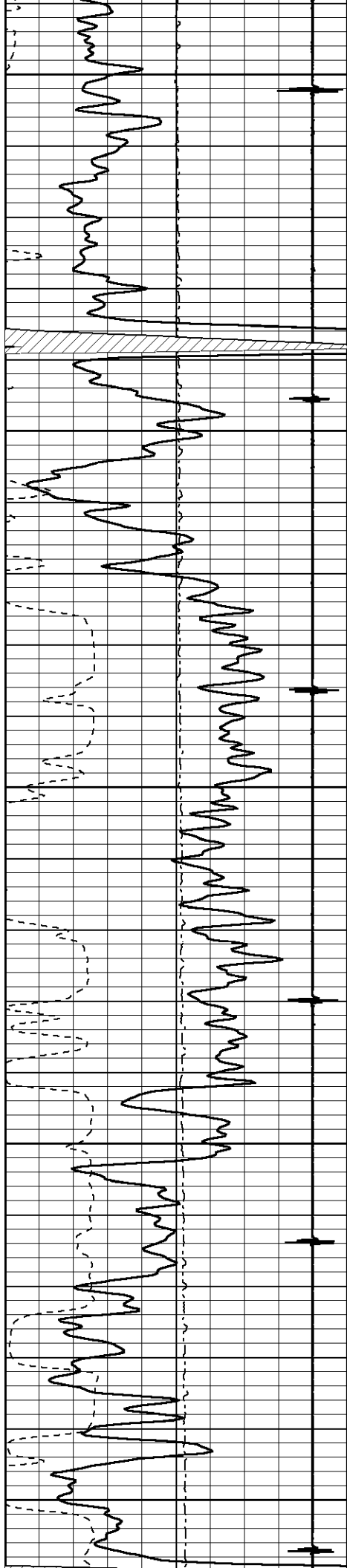
2350

2400

2450







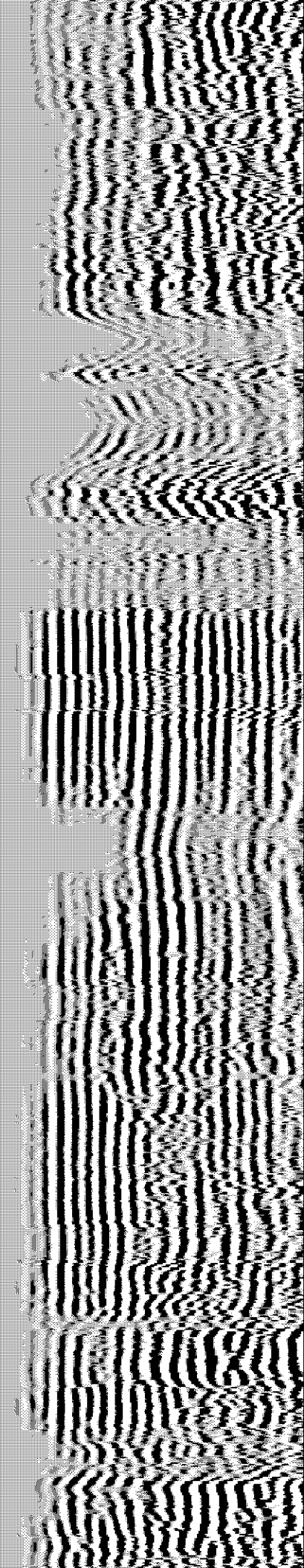
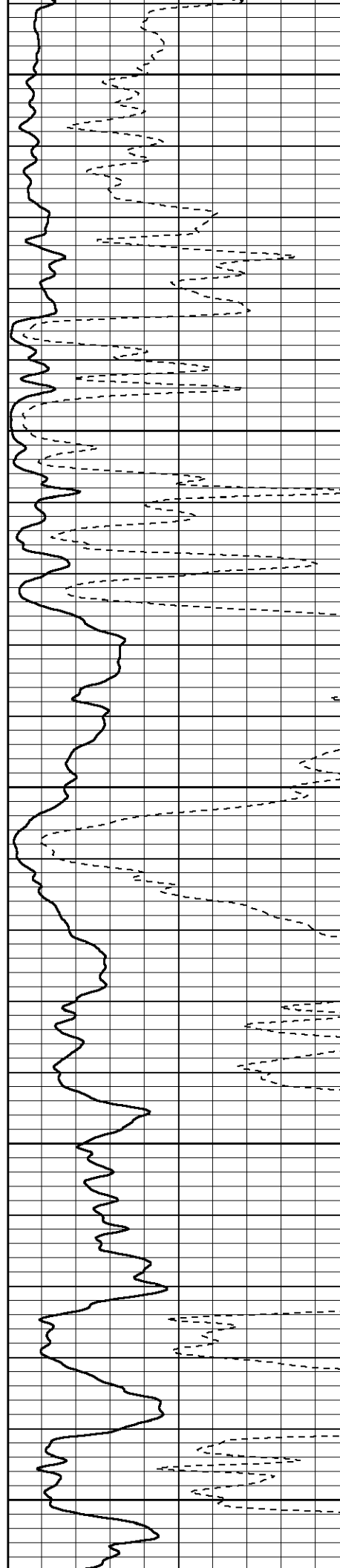
2700

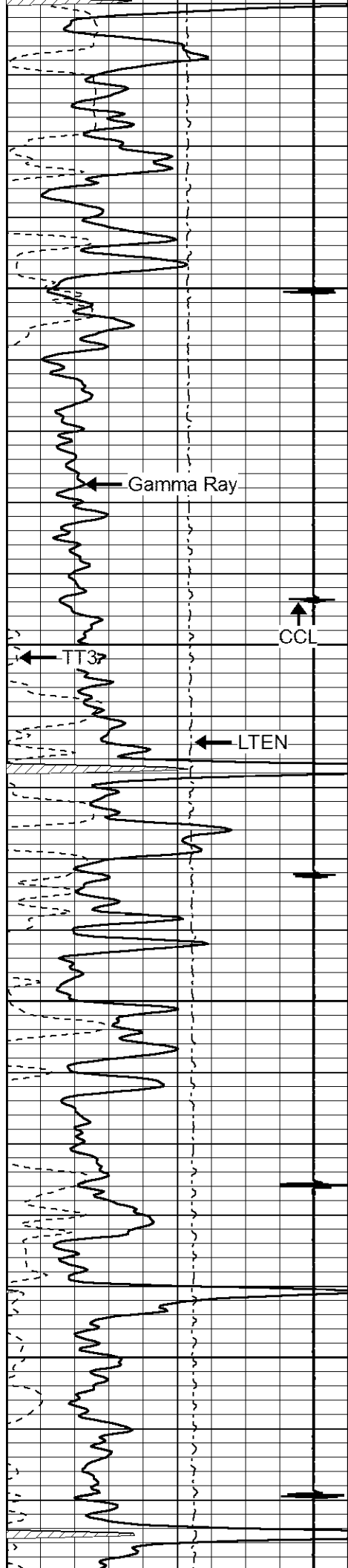
2750

2800

2850

2900



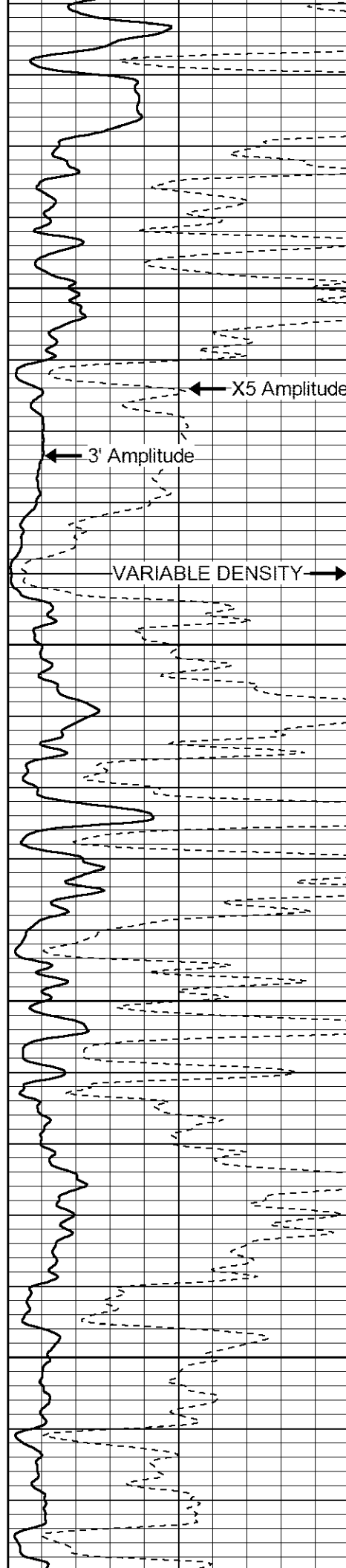


2950

3000

3050

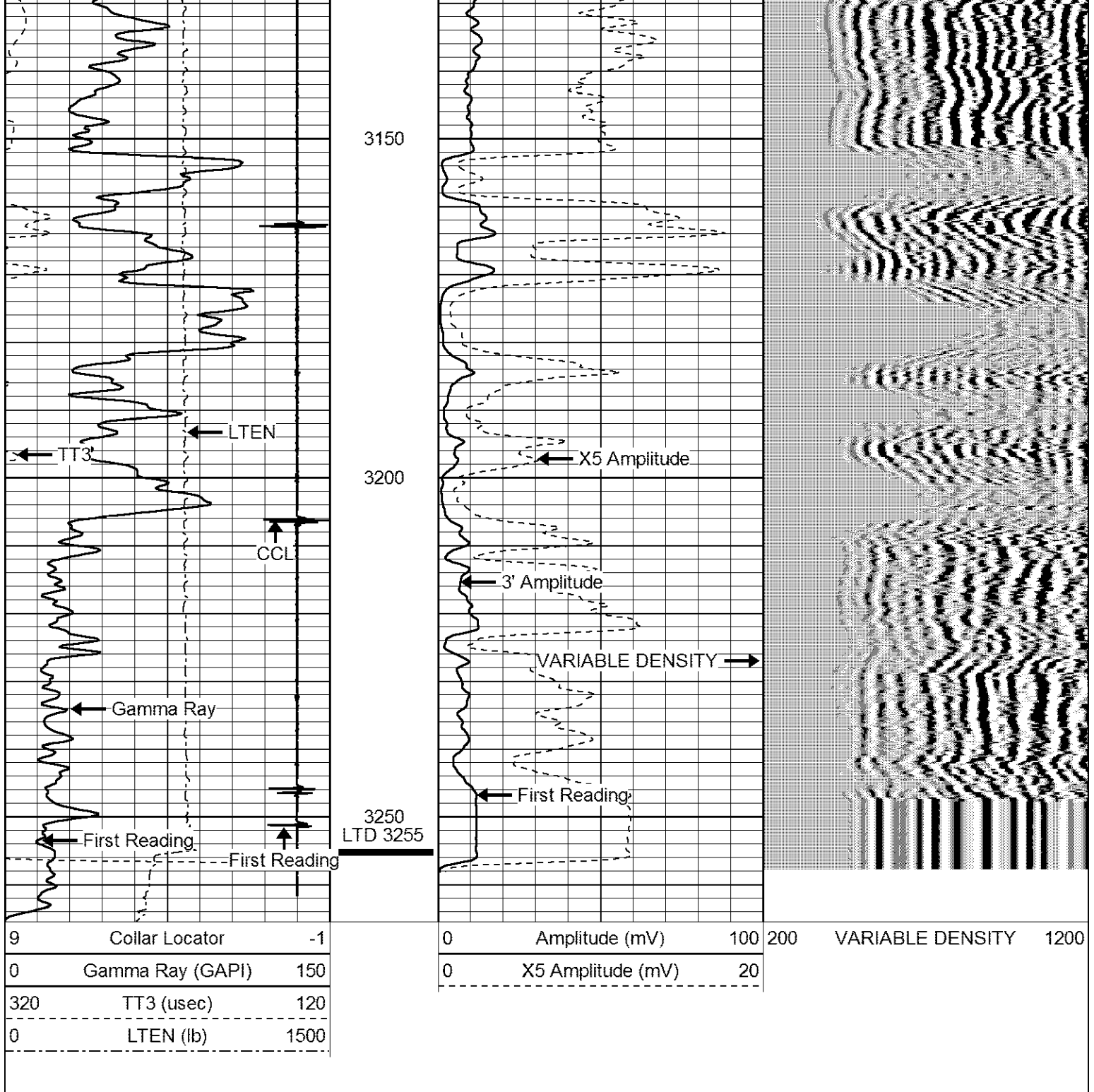
3100



X5 Amplitude

3' Amplitude

VARIABLE DENSITY



LOG-TECH

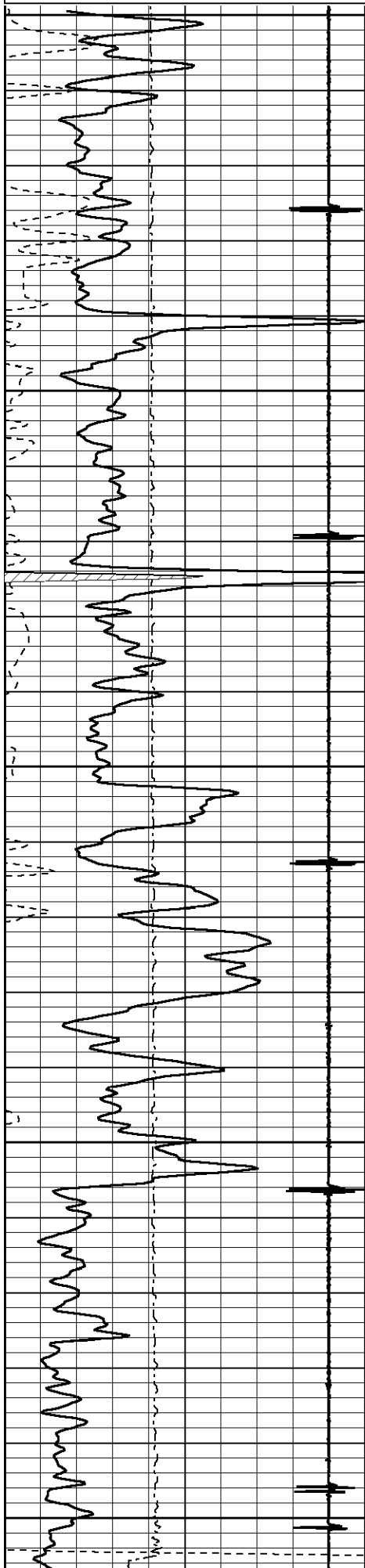
of Kansas
Inc.

GREAT BEND, KANSAS

REPEAT SECTION

Database File: schroederb3.db
 Dataset Pathname: pass3
 Presentation Format: cbl02
 Dataset Creation: Wed Aug 26 15:35:15 2015 by Log 7.0 B1
 Charted by: Depth in Feet scaled 1:240

9	Collar Locator	-1	0	Amplitude (mV)	100	200	VARIABLE DENSITY	1200
0	Gamma Ray (GAPI)	150	0	X5 Amplitude (mV)	20			
320	TT3 (usec)	120						



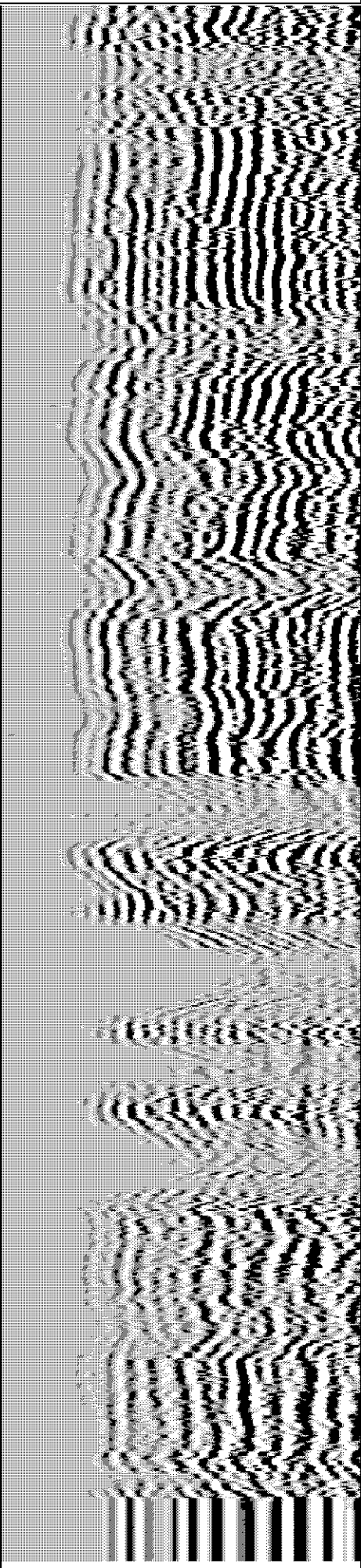
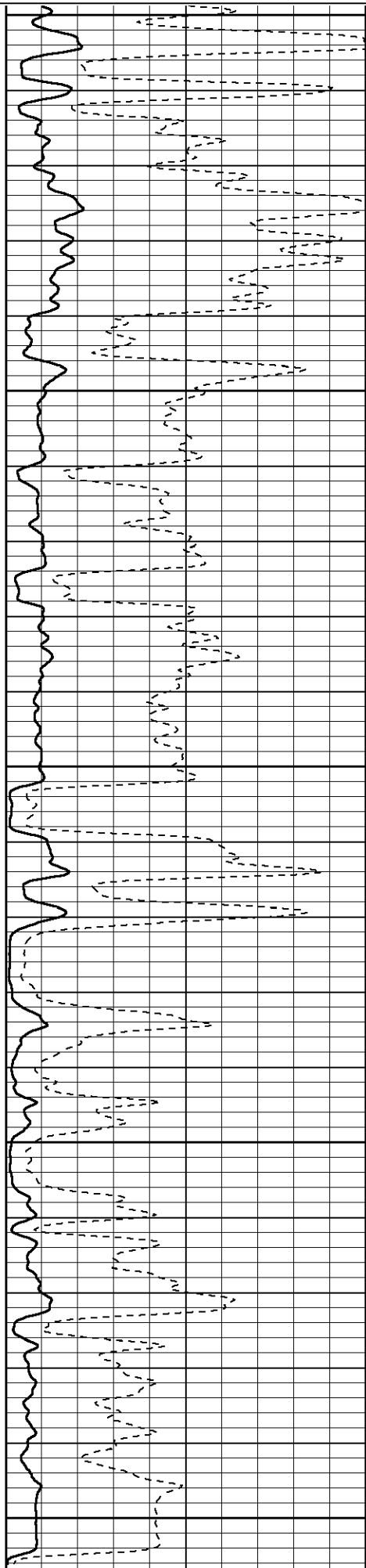
3050

3100

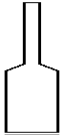



3150

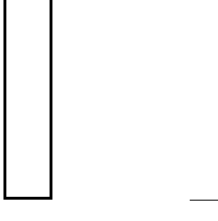
3200

3250



9	Collar Locator	-1	0	Amplitude (mV)	100	200	VARIABLE DENSITY	1200
0	Gamma Ray (GAPI)	150	0	X5 Amplitude (mV)	20			
320	TT3 (usec)	120						
0	LTEN (lb)	2000						

Sensor	Offset (ft)	Schematic	Description	Len (ft)	OD (in)	Wt (lb)
			STNDRD Standard Cable Head	1.00	1.69	10.00
WVF3	8.76		CBL-probecbl (probecbl1) probe cbl	8.75	2.75	92.00
WVF5	7.76					
CCL	3.69		CCL-Probe (275) probe ccl	1.55	2.75	30.00
			CB-probecr (progr1)	2.00	2.75	20.00

GR	0.90			GR-probegr (prog1) probe gamma ray	3.02	2.75	20.00
----	------	--	---	---------------------------------------	------	------	-------

Dataset: schroederb3.db: field/well/run1/pass5
 Total Length: 14.32 ft
 Total Weight: 152.00 lb
 O.D.: 2.75 in