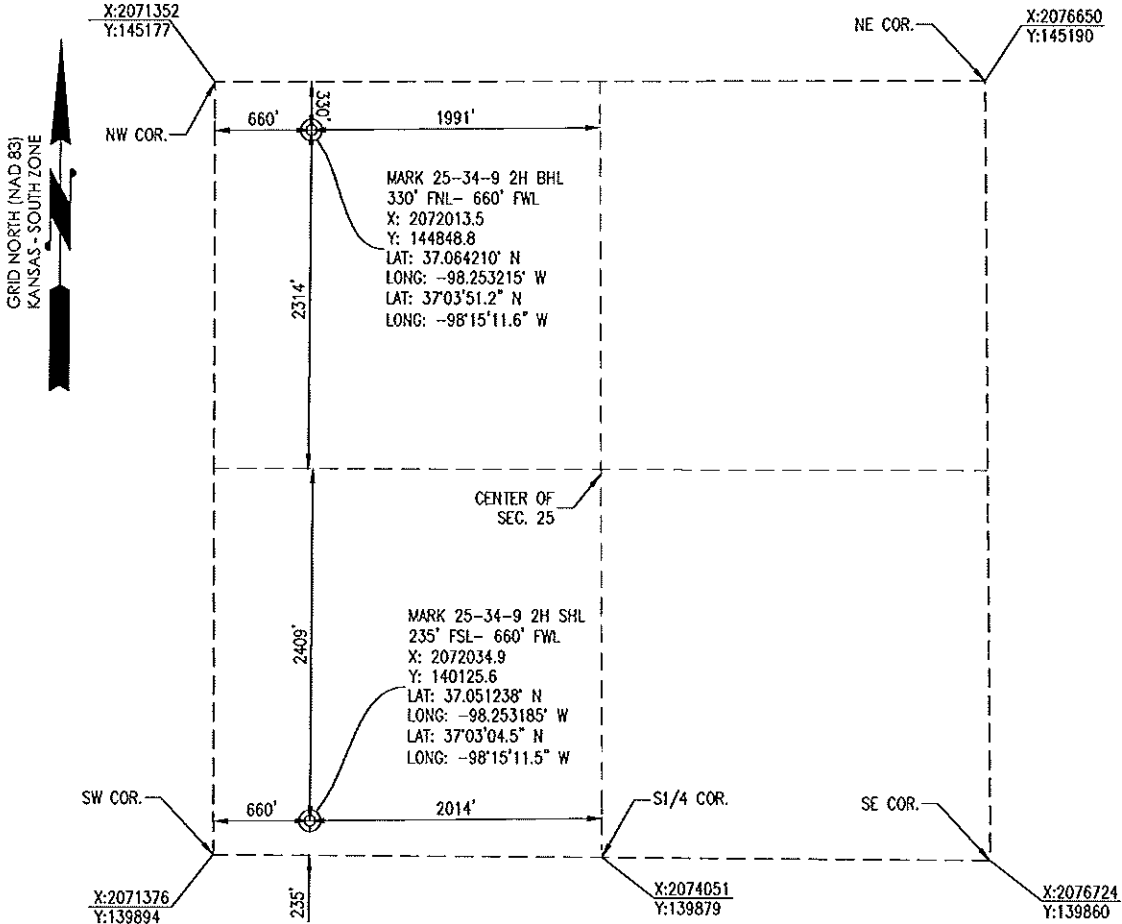




1000 LedgeLawn Drive
 Conway, Arkansas 72034
 501.328.3316 | 501.328.3325 f
 www.craftontull.com

Crafton Tull
 SURVEYING

HARPER COUNTY, KANSAS
 235' FSL & 660' FWL SECTION 25 TOWNSHIP 34S RANGE 09W 6TH P.M.



OPERATOR: TAPSTONE ENERGY

WELL NO: 2H

ELEVATION:
 1,269' GR. AT STAKE

LEASE NAME: MARK 25-34-9

TOPOGRAPHIC & VEGETATION: LOCATION FELL IN A FIELD

GOOD DRILL SITE: YES REFERENCE STAKES OR ALTERNATE LOCATION STAKES SET: NONE

BEST ACCESSIBILITY TO LOCATION: WEST LINE LINE

DISTANCE & DIRECTION
 FROM HWY JCT OR TOWN: FROM THE JCT. OF STATE HWY 2 AND SW 120 AVENUE, TRAVEL SOUTH ON SW 120 AVENUE FOR APPROXIMATELY 6.5 MILES, TO THE END OF SW 120 AVENUE.

(THE FOLLOWING INFORMATION WAS GATHERED USING A GPS RECEIVER ACCURACY ±2.3 METERS)

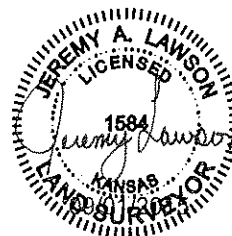
GPS DATUM: NAD-27
 LAT: 37.051238° N
 LONG: -98.253185° W

STATE PLANE COORDINATES:
 ZONE: KS-SOUTH NAD-27
 X: 2072034.9
 Y: 140125.6

DATE STAKED: 8-31-15

GENERAL NOTES:

THE TIES AND FOOTAGES SHOWN ON THIS PLAT ARE FROM LINES OF OCCUPATION FROM A SURVEY MADE ON THE GROUND AND / OR BEARING AND DISTANCES FROM THE GENERAL LAND OFFICE PLAT OF THE AREA SHOWN AND MAY NOT BE THE ACTUAL PROPERTY CORNERS. THIS PLAT DOES NOT REPRESENT A TRUE BOUNDARY SURVEY. DRILL SITE CONDITION DETERMINATIONS WERE MADE BY SANDRIDGE ENERGY INC. REPRESENTATIVES.



REVISION			
	"MARK 25-34-9 2H" PART OF THE SW 1/4 OF SECTION 25, T-34-S, R-09-W PROPOSED DRILL SITE HARPER COUNTY, KANSAS		
	SCALE: 1" = 1000'	DRAWN BY: J.PARKER	SHEET NO.: 1 OF 5
	PLOT DATE: 09-01-2015		