



**TRILOBITE
TESTING, INC**

DRILL STEM TEST REPORT

Vincent Oil Corporation

28-28s-23w Ford, Co. Ks.

155 N Market STE 700
Wichita, Ks. 67202

Frink-Brown 1-28

Job Ticket: 59802

DST#: 1

ATTN: Jim Hall

Test Start: 2015.06.25 @ 09:22:59

GENERAL INFORMATION:

Formation: **Pawnee**

Deviated: No Whipstock: 0.00 ft (KB)

Time Tool Opened: 12:21:59

Time Test Ended: 20:11:44

Test Type: Conventional Bottom Hole (Initial)

Tester: Matt Smith

Unit No: 53

Interval: 4953.00 ft (KB) To 4989.00 ft (KB) (TVD)

Reference Elevations: 2476.00 ft (KB)

Total Depth: 4989.00 ft (KB) (TVD)

2463.00 ft (CF)

Hole Diameter: 7.88 inches Hole Condition: Fair

KB to GR/CF: 13.00 ft

Serial #: 8931 Inside

Press@RunDepth: 89.74 psig @ 4954.00 ft (KB)

Capacity: 8000.00 psig

Start Date: 2015.06.25

End Date:

2015.06.25

Last Calib.:

2015.06.25

Start Time: 09:23:04

End Time:

20:11:44

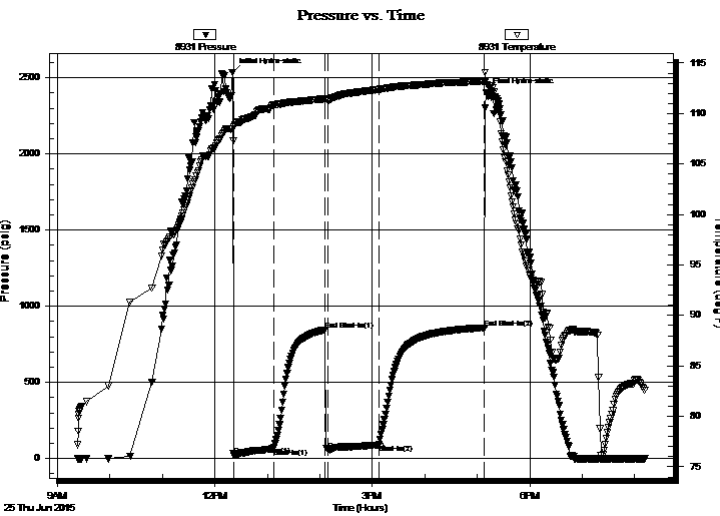
Time On Btm:

2015.06.25 @ 12:19:59

Time Off Btm:

2015.06.25 @ 17:09:59

TEST COMMENT: IF: Fair - Strong blow . B.O.B. in 29 mins.
IS: No blow .
FF: Fair - Strong blow . B.O.B. in 4 1/2 mins.
FS: Weak blow . Surf., - 1/2". Blow back in 35 mins. Dead in 1 hr 15 mins.



PRESSURE SUMMARY

Time (Min.)	Pressure (psig)	Temp (deg F)	Annotation
0	2536.17	108.51	Initial Hydro-static
2	21.26	108.68	Open To Flow (1)
48	64.99	110.86	Shut-In(1)
106	844.99	111.44	End Shut-In(1)
110	56.28	111.30	Open To Flow (2)
168	89.74	112.38	Shut-In(2)
289	858.84	113.20	End Shut-In(2)
290	2402.93	113.27	Final Hydro-static

Recovery

Length (ft)	Description	Volume (bbl)
60.00	MWOCG 3% _m 17% _w 25% _o 55% _g	0.30
60.00	MWOCG 3% _m 7% _w 27% _o 63% _g	0.30
60.00	MWOCG 5% _m 6% _w 15% _o 74% _g	0.31
20.00	GOCM 10% _g 10% _o 80% _m	0.28
0.00	1,728' G.I.P. 100% _g	0.00

Gas Rates

	Choke (inches)	Pressure (psig)	Gas Rate (Mcf/d)



**TRILOBITE
TESTING, INC**

DRILL STEM TEST REPORT

FLUID SUMMARY

Vincent Oil Corporation

28-28s-23w Ford, Co. Ks.

155 N Market STE 700
Wichita, Ks. 67202

Frink-Brown 1-28

Job Ticket: 59802

DST#: 1

ATTN: Jim Hall

Test Start: 2015.06.25 @ 09:22:59

Mud and Cushion Information

Mud Type: Gel Chem

Cushion Type:

Oil API:

deg API

Mud Weight: 9.00 lb/gal

Cushion Length:

ft

Water Salinity:

ppm

Viscosity: 51.00 sec/qt

Cushion Volume:

bbf

Water Loss: 10.38 in³

Gas Cushion Type:

Resistivity: ohm.m

Gas Cushion Pressure:

psig

Salinity: 8900.00 ppm

Filter Cake: 0.20 inches

Recovery Information

Recovery Table

Length ft	Description	Volume bbf
60.00	MWOCG 3% <i>m</i> 17% <i>w</i> 25% <i>o</i> 55% <i>g</i>	0.295
60.00	MWOCG 3% <i>m</i> 7% <i>w</i> 27% <i>o</i> 63% <i>g</i>	0.295
60.00	MWOCG 5% <i>m</i> 6% <i>w</i> 15% <i>o</i> 74% <i>g</i>	0.313
20.00	GOCM 10% <i>g</i> 10% <i>o</i> 80% <i>m</i>	0.281
0.00	1,728' G.I.P. 100% <i>g</i>	0.000

Total Length: 200.00 ft

Total Volume: 1.184 bbf

Num Fluid Samples: 0

Num Gas Bombs: 0

Serial #: none

Laboratory Name:

Laboratory Location:

Recovery Comments:

Serial #: 8931

Inside

Vincent Oil Corporation

Frink-Brown 1-28

DST Test Number: 1

